



the
grove
MONTROSE - CO

Welcome to The Grove!

Discover luxury living in Montrose, CO, at The Grove community! Strategically located to provide easy access to all the wonders of Western Colorado, The Grove is your gateway to an unparalleled lifestyle. Imagine living minutes away from a Jack Nicklaus-designed golf course, a state-of-the-art community center with rock climbing, swimming, and extensive fitness facilities, and all your daily shopping needs, from Target, Sportsman's Warehouse, grocery stores, and so much more. Montrose is booming, expanding its amenities southward toward Telluride, and The Grove is the crowning jewel of this vibrant area!

At The Grove, we offer a variety of semi-custom homes designed to fit the Montrose lifestyle perfectly. Whether you're interested in the convenient "Lock and Leave" 2-bedroom, 2-bath Hedgehog Burrow or the expansive 5-bedroom, 4-bath Elks Lodge, our homes can be customized to your heart's content. Use our interactive floor plan tool on our website to add rooms, change layouts, and choose from three stunning exterior finishes: Bold & Minimal, Clean Craftsman, and Modern Rustic.

The Grove embodies the "come home and go outside" philosophy. Our thoughtfully designed floor plans feature unique side yards and ample outdoor entertainment spaces, making it easy to connect with your neighborhood. Enjoy the abundant open spaces perfect for dog walking or a leisurely stroll. Plus, future phases will include exciting amenities like pickleball courts and more outdoor recreation options throughout the community.

We are thrilled that you are considering The Grove for your future home. Our dedicated team is ready to deliver your dream semi-custom home with impeccable quality, a timely construction process, and our thorough 1-year no-hassle guarantee.

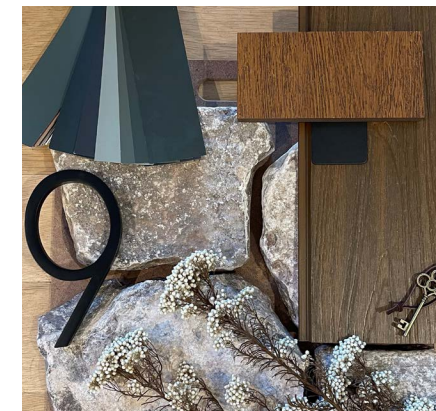
Don't miss out on the opportunity to be part of this exceptional community. Contact us today to start your journey to a new, extraordinary life at The Grove!

Christopher Koch

 the grove

index

- 5 the grove at a glance
- 6 vicinity map
- 10 building at the grove
- 12 selection & design process
- 18 the grove community plan
- 20 available homes
- 43 contact us



come home, then go outside.



the grove at a glance

- The city of Montrose is known for its natural beauty, and offers more than 160 acres of open space, 38 developed parks, 1,000 acres of riparian space and wildlands and provides easy access to surrounding Colorado destinations.
- 44.65 acres, located east of 550 and south of 50 in the City of Montrose.
- 129 single-family homes by our team of designers and builders.
- Single-family home options currently include: ranch, two-story and patio plans ranging from approx 1,000 sf to 3,000 sf.
- Community architecture represents authentic regional building styles, including Bold & Minimal, Modern Rustic and Clean Craftsman interpretations.
- With The Grove's Semi-Custom Home Building process, our integrated team will work with you from the beginning of sale to move-in with lot and home selections, financing, design, and build of your home.
- Move-In Ready Homes will be available periodically, upcoming opportunities will be located on the website.
- Located within the Montrose County School District, children in The Grove will attend Cottonwood Elementary School, Columbine Middle School or Montrose High School, as well as nearby private and schools like Colorado West Christian School.
- Homeowner Assessments are \$500.00/year per household. The HOA fee covers the maintenance of all Grove community amenities including parks, trails, landscaping, fencing, maintenance of mail kiosk and open space areas.
- Ask a Sales Consultant about The Grove's Lock and Leave Maintenance Program available.
- Water supplied by Tri-County Water.
- Trash, Recycling and Sewer services by The City of Montrose.
- Natural Gas services provided by Black Hills Energy.
- Electric service is provided by DMEA.
- Telephone service is provided by Century Link.

community amenities

Almost 1/4 of the community is dedicated to open space, with a variety of large grassy areas, a playground, community garden, shade structures, picnic areas and more.

We are committed to respect the land that was here before us, and re-establish what may have been lost during construction. So our landscaping includes the utilization and re-seeding of natural plants and grasses that will grow and transform over time. It will take a little time for this refined and carefully considered landscaping to mature, but it will be well worth the wait.

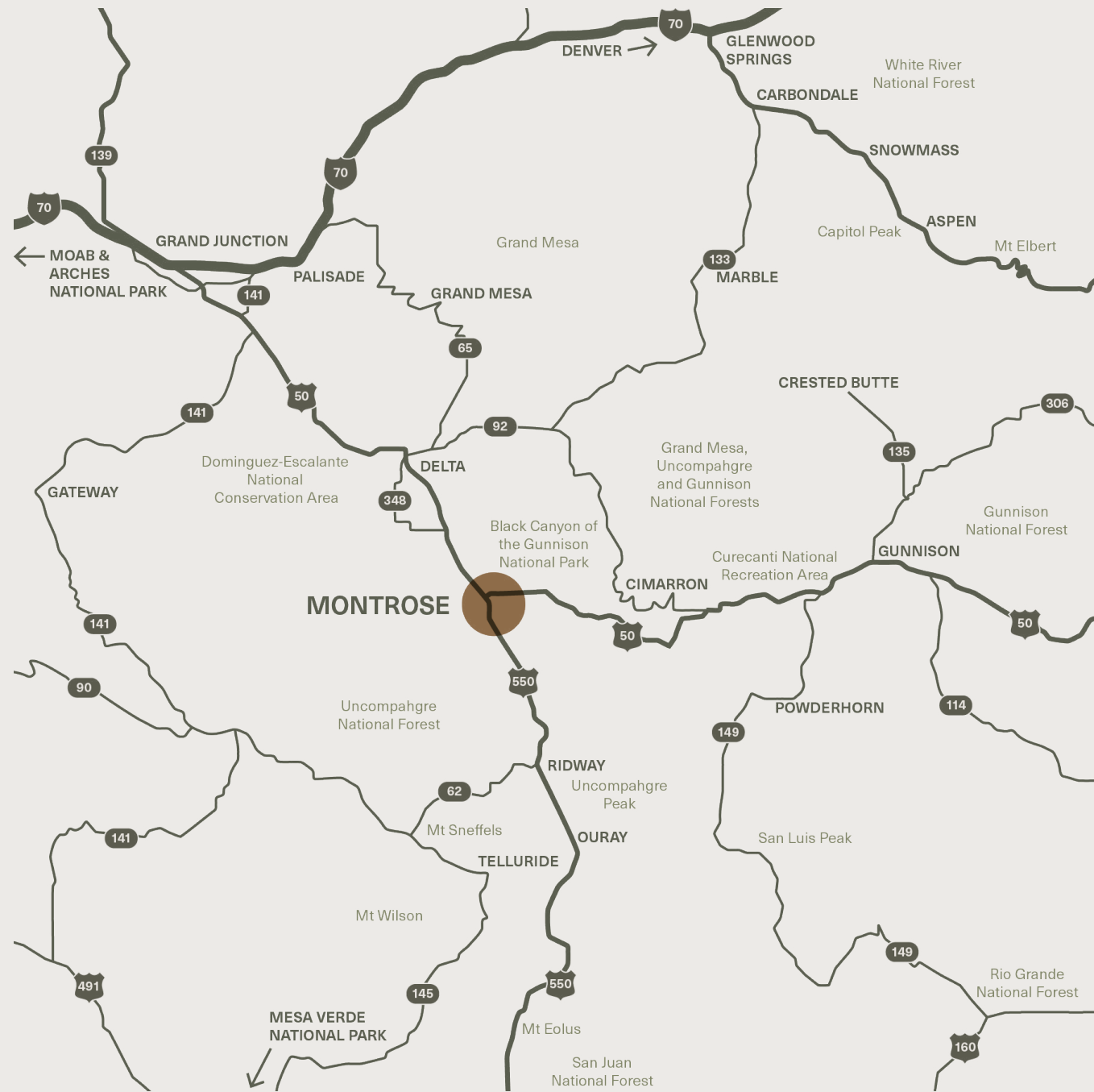
What's coming to The Grove:

- Soft-Surface trails that will meander throughout the community
- Pickleball courts with shelter.
- Community seating areas, and manicured lawn areas for smaller gatherings, classes or events.
- Outdoor fire pit.
- Playground area.



This is not an offer for real estate for sale, nor solicitation of an offer to buy to residents of any state or province in which registration and other legal requirements have not been fulfilled. Features and plans subject to change without notice. Views not guaranteed and may change over time. School enrollment and boundaries subject to change. Illustrations are artist's conceptual depictions and subject to change without notice. The Grove at Montrose LLC. makes no promises or representation concerning future development. All rights reserved. Trademarks are property of their respective owners. Equal Housing Opportunity.

vicinity map



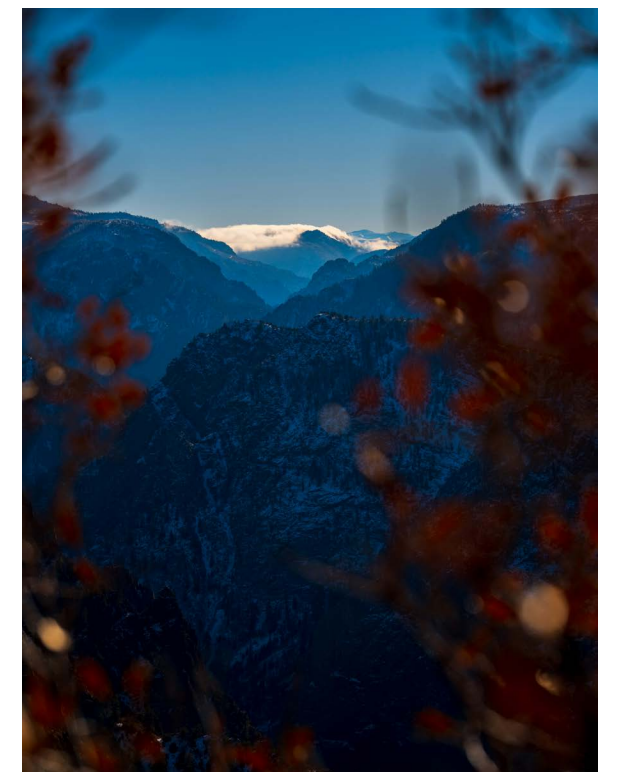
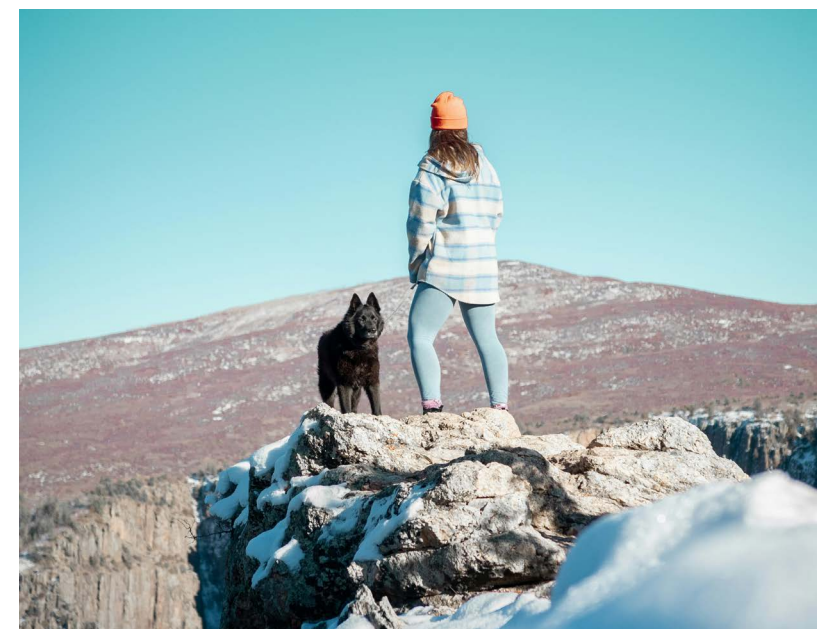
- Montrose Regional Airport • 15 mins • Black Canyon of the Gunnison National Park • 20 mins
- Ridgway State Park • 25 mins • Blue Mesa Reservoir • 1 hr • Telluride • 1.5 hrs
- Powderhorn Resort • 1.5 hrs • Crested Butte Resort • 2 hrs • Aspen Snowmass Resort • 2.5 hrs
- Mesa Verde National Park • 2.5 hrs • Moab • 3 hrs • Denver • 5 hrs



All Within Reach

a community of semi-custom built homes on nature's doorstep.

Colorful, diverse, and full of possibility, Montrose has something for everyone. Whether you want snowy mountain adventures, a small-town community or golden sunsets over the San Juans, this is the place to live, work and play. The Grove is a master-planned community that provides residents a cozy respite for an active lifestyle.



Local Attractions

Montrose is known as the city to “work here, play everywhere”. Surrounded by National Parks, Ski Resorts, and countless lakes and trails, Montrose is the perfect retreat. The range of homes at The Grove offers you a life less ordinary and have been designed and built to complement their surroundings. With community open space, parks and trails throughout, you’ll be able to enjoy everything Colorado offers right out your doorstep. Our homes celebrate Colorado’s active lifestyle and love of the outdoors with covered patio spaces - check out each home’s unique configuration.

explore

- Mountain Biking Trails: Buzzards Gulch, RAT Trails
- TREK Cycling Group on Saturdays
- Cycling Group on Wednesdays
- Fishing at Pok-Ko-Chu-Puk and Black Canyon Reservoir
- Golf Courses and Country Clubs: Black Canyon, Cobble Creek, and The Bridges
- Water Sports Park
- White Water Rafting

foodie shops

- Trattoria Di Sofia
- Chang Thai
- Remington's at The Bridges
- Fiesta Guadalajara
- DKs Snack Shack (subs)

coffee

- Dutch Brothers
- Starbucks
- Looney Bean
- Coffee Trader
- 7-Brew's

breweries

- Horsefly Brewing Company
- Pomona Brewery



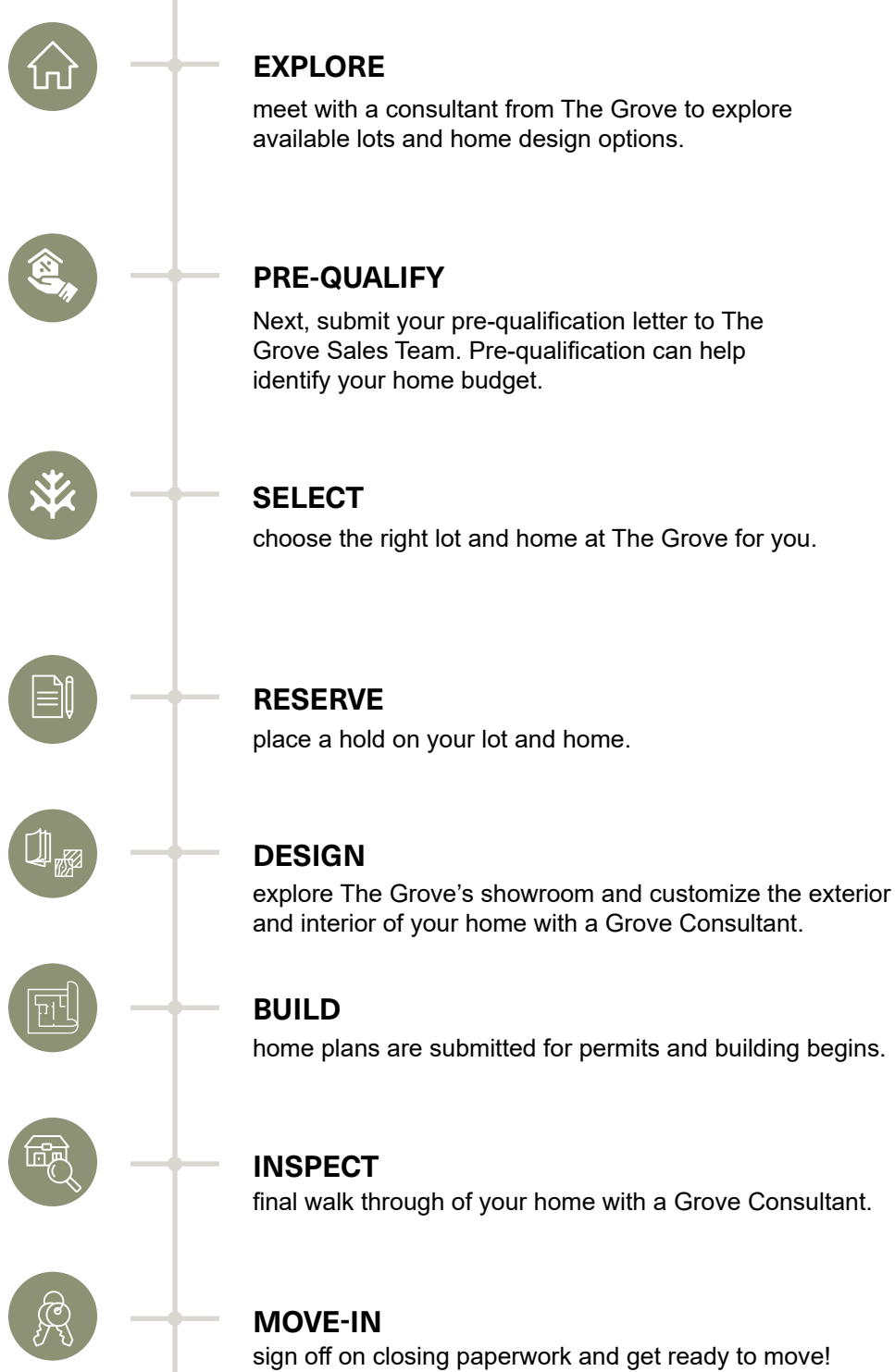
vicinity map





Building at The Grove

The Grove offers a custom home buying and build experience without the stress. We've set up easy steps to get you into your dream home seamlessly all while having a fun design and build process. Our integrated teams guide you the entire way.



Meet the Team

a semi-custom process made easy.

At The Grove, we have created a step-by-step solution to receive the perfect new built home in Montrose, Colorado. You'll work with our esteemed team through your entire new home building process: from the initial sales, design, construction to final move-in.



CHRISTOPHER KOCH

Owner and Developer
Compass Development
info@thegrovemontrose.com
Chris@compass.dev
Phone: 970.765.7579



KALLI DEVINCINTIS

Sales Assistant
Compass Development
info@thegrovemontrose.com
Kalli@compass.dev
Phone: 970.765.7579



TOM MANN

Project Manager
Compass Development
info@thegrovemontrose.com
Tommy@compass.dev
Phone: 406.871.1484



NICK YOUNG

Design Consultant
SideBySide
design@thegrovemontrose.com



LAUREN YOUNG

Design Consultant
SideBySide
design@thegrovemontrose.com



JACOB OWENS

HOA and Site Manager
Compass Development
info@thegrovemontrose.com



MANUEL MORALES

Site Superintendent
The Grove Vertical
construction@thegrovemontrose.com



TYLER MAHAN

Assistant Site Superintendent
Compass Development
Tyler@compass.dev



MATT HAMN

Site Excavation
Hamns Excavation



Selection and Design Process

From selecting your home's layout online, to reviewing finishes from our material library showroom, we've created a design process that is easy and simple. Homes at The Grove are curated to your needs, every step of the way.

Once you've selected your lot, home and layout customizations, you'll work one-on-one with our design team to review the exterior and interior of your home. SideBySide, The Grove's Design Team, has tailored the houses with numerous finishes, fixtures and design elements to make the home uniquely yours. Review all options available within our Design Option and Upgrade books and see physical samples at the showroom.



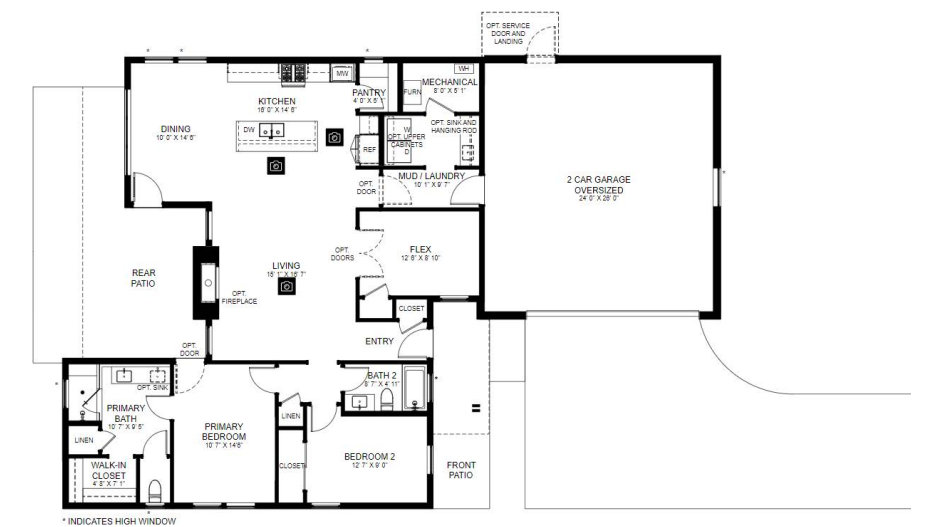
home layout and plan customizations

Once you've selected a lot and home, explore the interactive floor plans for each home design on the website to view the "standard" layout of a home. Layout Options are available on every home and provide different plan customizations at no cost or with an additional upgrade to the base price of a home. Home Layout Options include:

- Kitchen Range/Appliance Package Sizes
- Patio Door Access (Glass Sliding Door Sizes or Additional Door Upgrades)
- Flex or Additional Bedroom Layout
- Primary Bathroom and Secondary Bathroom Layouts
- Garage Size Upgrades
- Home Additions for extra Bathroom, Bedroom or Covered Patio Space
- And More!

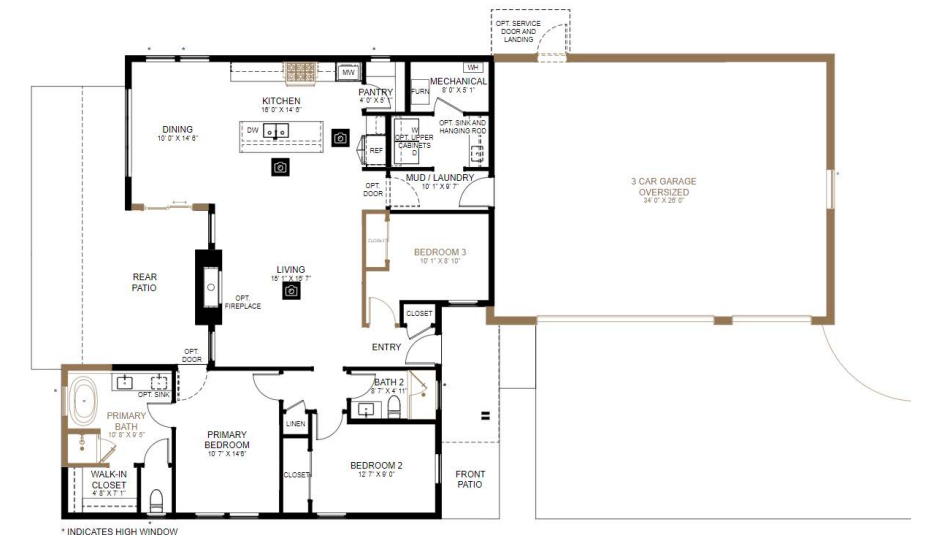
- Kitchen Standard: 30" Range
- Kitchen Premium: 36" Range
- Kitchen Gourmet: 48" Range
- Dining Swing Door
- Dining Sliding Glass Door 5'
- Dining Sliding Glass Door 6'
- Prim Bath: Standard Shower and Linen
- Prim Bath: Alcove Tub and Linen
- Prim Bath: Freestanding Tub and Shower
- Prim Bath: Large Closet Connected
- Prim Bath: Large Closet Separated
- Primary Bedroom 4' Expansion
- Bath 2: Alcove Tub
- Bath 2: Shower
- Garage 2 Car Oversized
- Garage 3 Car

Chipmunk Cottage - Standard Floor Plan



- Kitchen Standard: 30" Range
- Kitchen Premium: 36" Range
- Kitchen Gourmet: 48" Range
- Dining Swing Door
- Dining Sliding Glass Door 5'
- Dining Sliding Glass Door 6'
- Prim Bath: Standard Shower and Linen
- Prim Bath: Alcove Tub and Linen
- Prim Bath: Freestanding Tub and Shower
- Prim Bath: Large Closet Connected
- Prim Bath: Large Closet Separated
- Primary Bedroom 4' Expansion
- Bath 2: Alcove Tub
- Bath 2: Shower
- Garage 2 Car Oversized
- Garage 3 Car

Chipmunk Cottage - Customized Floor Plan



architectural styles

The Grove offers local building style for each home: Bold and Minimal, Modern Rustic and Clean Craftsman. Homes have been thoughtfully designed to flow with the community with regards to the exterior materiality, proximity, and overall balance within The Grove. Explore all models available and discover opportunities to customize your home exterior.



BOLD & MINIMAL

MODERN RUSTIC

CLEAN CRAFTSMAN



exterior selection process

Once the exterior style has been selected, buyers will work with the design team to review and select exterior options and upgrades. With The Grove's streamlined process, buyers have the opportunity to select finishes within "standards" or upgrade elements individually - that means pricing is customized depending on budget and personal style. Finish Options and Selections include the following:

- Exterior Palette: Paint Color(s), Stucco Texture, Stone, Roofing, Wood Composite Decking Upgrade
- Windows and Door Styles and Finish, including your Front Entry, Garage Door, Glass Sliding Doors
- Lighting and Accessories

*** Stone**

*** Lighting: Wall Scones**

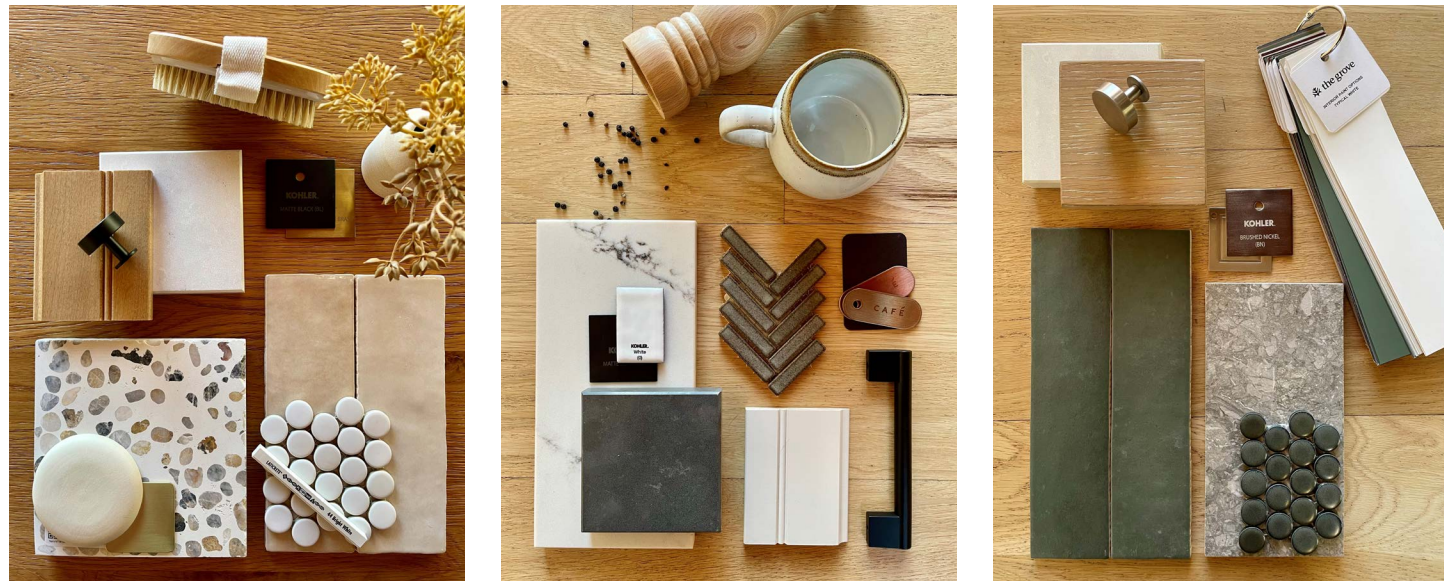
*** Paint: Exterior Siding & Soffit**

*** Front Door**

*** Front Door: Paint Color**

*** Stone**

interior selection process

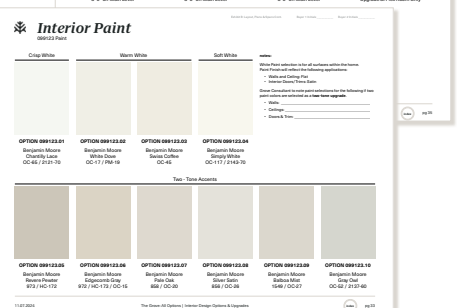
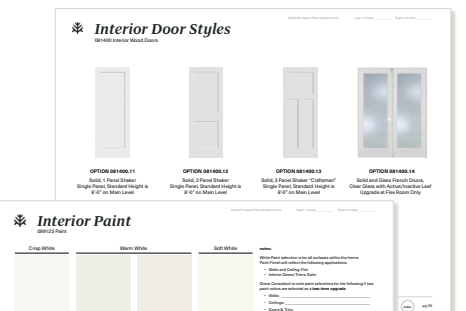
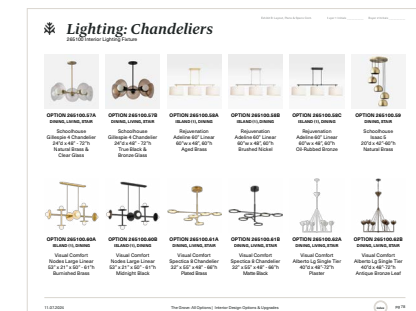
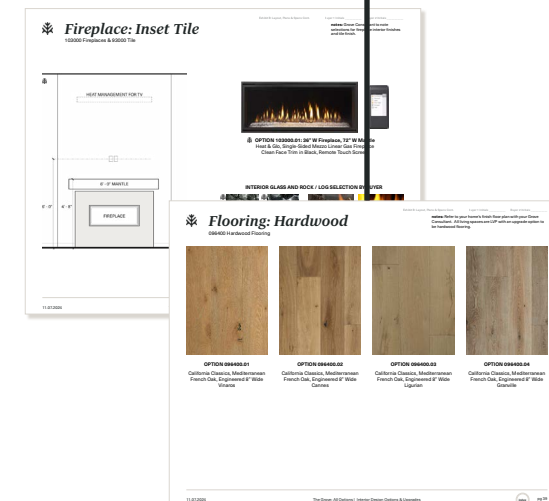
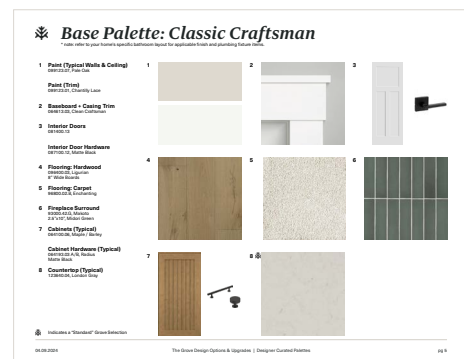


With the standard and upgrade options available at The Grove, buyers have a range of options that fit your upgrade budget. With our library of finishes providing hundreds of skus available to select from, buyers have the ability to select options that reflect an interior style of their making.

As a kick start to the design process, the Design Team will discuss best practices to stay in your defined budget and how the options available can reflect your style. Buyers will receive a digital book of all the Interior Options and Upgrades available as well as a book with Designer Curated Palettes. The Designer Curated palettes offer a range of styles that can be mixed and matched by room. Style inspirations range from Traditional Modern and Classic Craftsman to Earthy Rustic or Urban Retreat. We encourage buyers to flag items that interest them and then explore the material library showroom to view the finishes in person.

In your Design Session, you'll work with the designer to define your home's style. Starting with the base finish palette, we'll walk through your interior selections, working room by room to create a space that reflects you. Selections have been curated by the design team to bring warmth, texture and unique detailing. Buyers will be able to utilize the showroom to see finishes in person, or browse the books digitally on their own. Finish Options and Selections include the following:

- Base Palette: Paint, Door Styles, Trim, Flooring (LVP, Hardwood, Carpet and Tiles), Cabinet Door Styles and Finish as well as your Fireplace wall finish
- Space by Space to select the finishes, light fixtures, plumbing fixtures, appliances and accessories



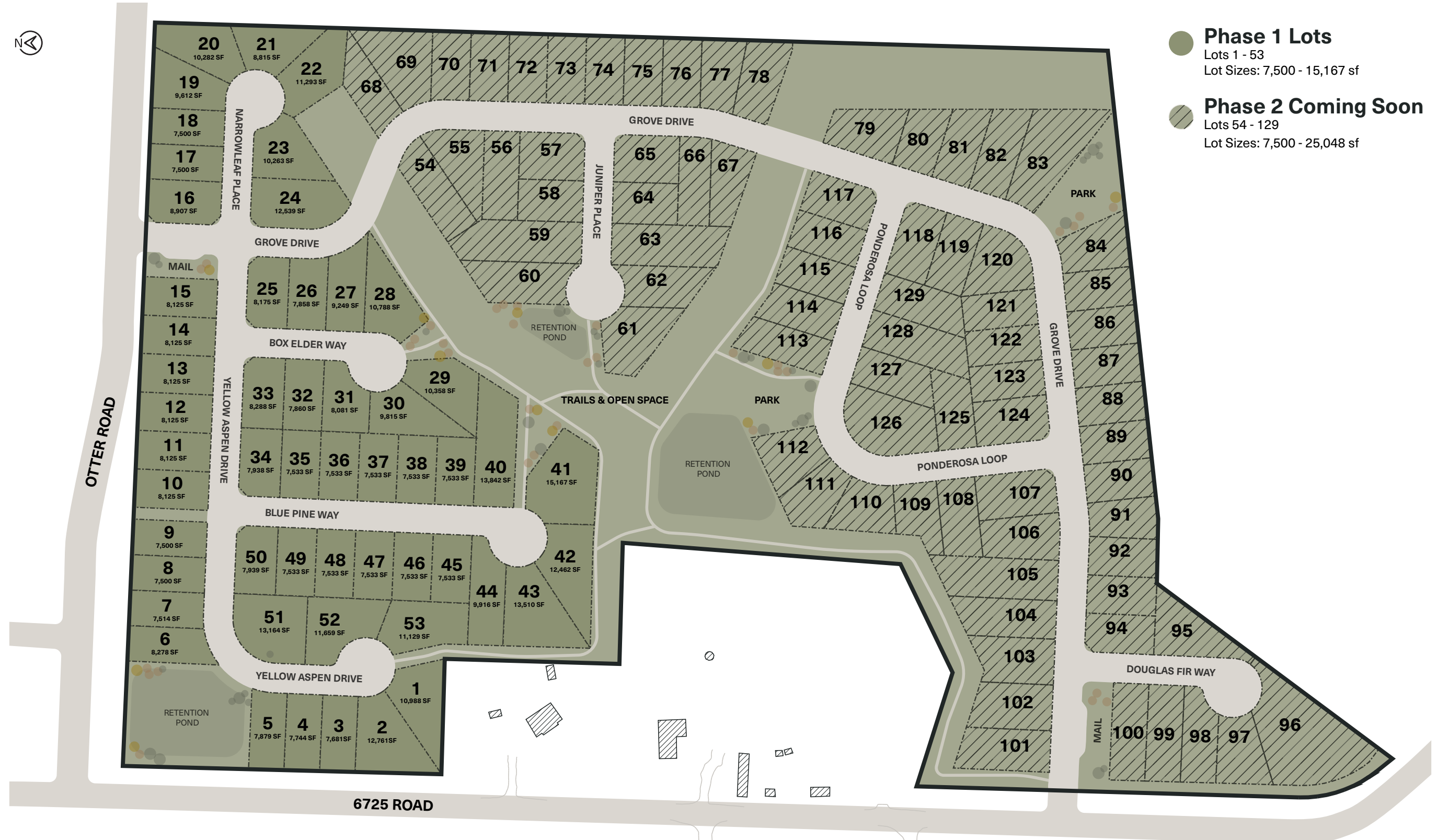


The Grove Community Plan

Explore our interactive Lots Map on the website to see which lots are currently available, homes that fit on a specific lot, and lots that have been sold.



- Phase 1 Lots**
Lots 1 - 53
Lot Sizes: 7,500 - 15,167 sf
- Phase 2 Coming Soon**
Lots 54 - 129
Lot Sizes: 7,500 - 25,048 sf





Current Homes Available

Connect with a Grove Sales Consultant for pricing of homes available.

1 LEVEL HOMES

Finished SqFt 1,014 - 938
76 sf reduction option

Bedrooms 2
Primary Bedroom Primary on Main

Bathrooms 1 - 2.5

Garage Size 2 Cars

Patio Location Front + Rear

Finished SqFt 1,113 - 1,388
275 sf addition option

Bedrooms 2 - 3
Primary Bedroom Primary on Main

Bathrooms 2 - 3

Garage Size 2 Cars

Patio Location Front + Rear

Finished SqFt 1,553 - 1,660
107 sf addition option

Bedrooms 2 - 3
Primary Bedroom Primary on Main

Bathrooms 1.5 - 3

Garage Size 2 - 3 Cars

Patio Location Front + Side +
Rear Option

Finished SqFt 1,640 - 1,703
63 sf addition option

Bedrooms 2 - 3
Primary Bedroom Primary on Main

Bathrooms 2

Garage Size 2 - 3 Cars

Patio Location Front + Rear

1 LEVEL HOMES

Finished SqFt 1,951

Bedrooms 2 - 3
Primary Bedroom Primary on Main

Bathrooms 2

Garage Size 2 - 3 Cars

Patio Location Front + Side
Wrap-Around

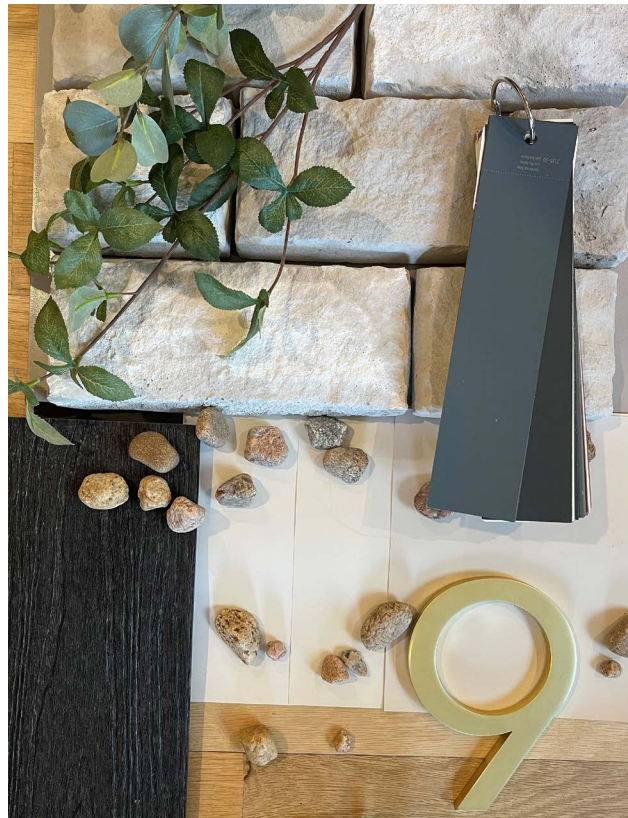
Finished SqFt 2,137 - 2,178
41 sf addition option

Bedrooms 2 - 3
Primary Bedroom Primary on Main

Bathrooms 2.5 - 3

Garage Size 2 - 3 Cars

Patio Location Front + Side



Current Homes Available

Connect with a Grove Sales Consultant for pricing of homes available.

2 LEVEL HOMES

Finished SqFt 2,283
 Main Level 1,281
 Second Level 1,002

Bedrooms 3 - 4
 Primary Bedroom Primary on Second

Bathrooms 2.5 - 3

Garage Size 2 - 3 Cars

Patio Location Front + Side

Finished SqFt 2,667
 Main Level 1,353
 Second Level 1,314

Bedrooms 3 - 5
 Primary Bedroom Primary on Second

Bathrooms 3.5 - 4

Garage Size 2 - 3 Cars

Patio Location Front, Rear + Upper Roof Deck

Finished SqFt 2,976
 Main Level 1,281
 Second Level 1,002

Bedrooms 5
 Primary Bedroom Primary on Second

Bathrooms 4

Garage Size 2 - 3 Cars

Patio Location Front + Side Wrap-Around

Finished SqFt 3,011
 Main Level 2,028
 Second Level 982

Bedrooms 4 - 5
 Primary Bedroom Primary on Second

Bathrooms 3.5 - 4

Garage Size 3 Cars

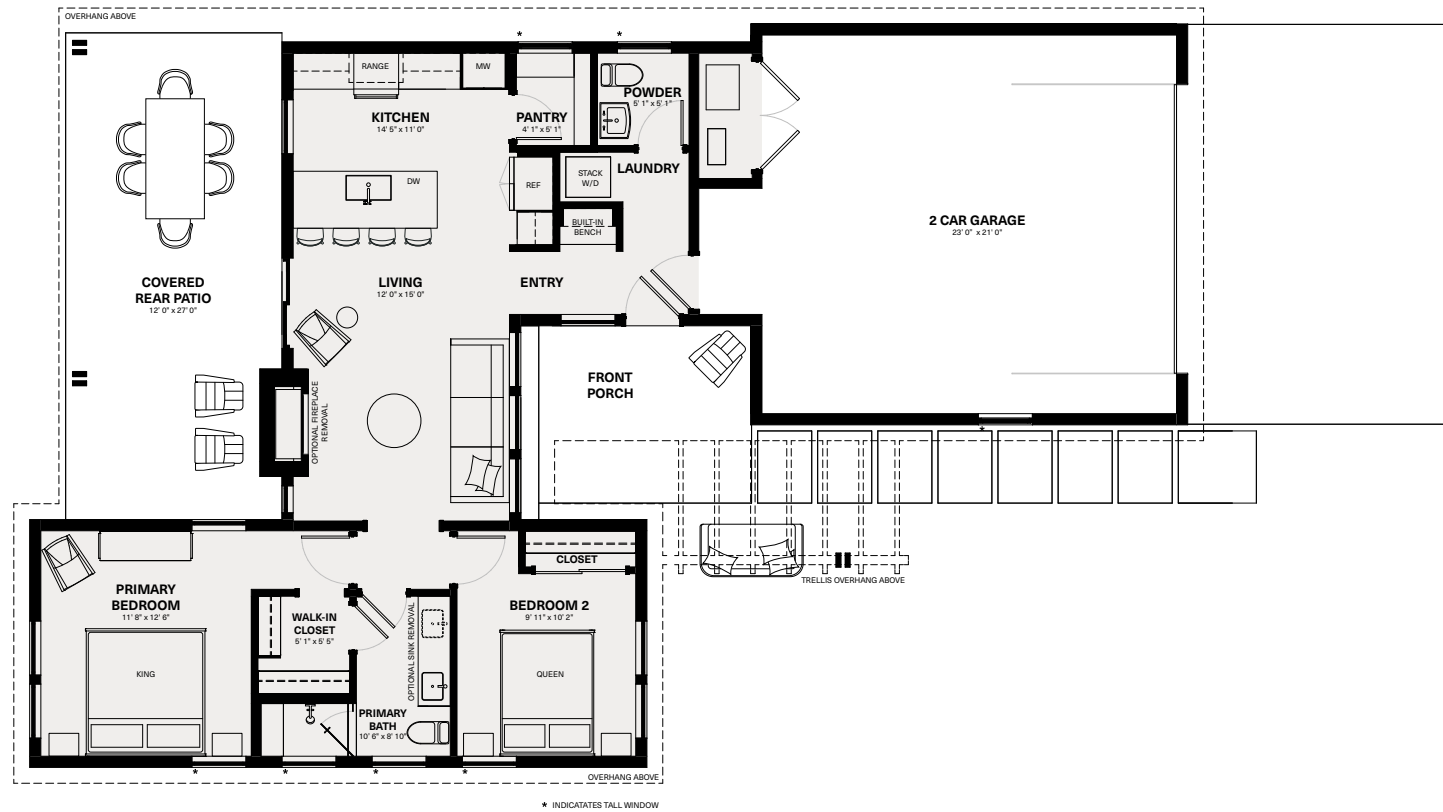
Patio Location Front, Side + Rear Primary Bed



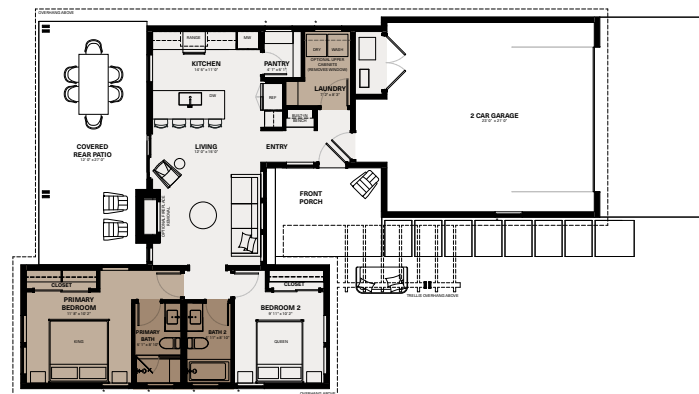
Woodpecker's Roost

1,014 - 938 sf | 1 Level | 2 Bedrooms | 1 - 2.5 Bathrooms | 2 - 2.5 Car Garage

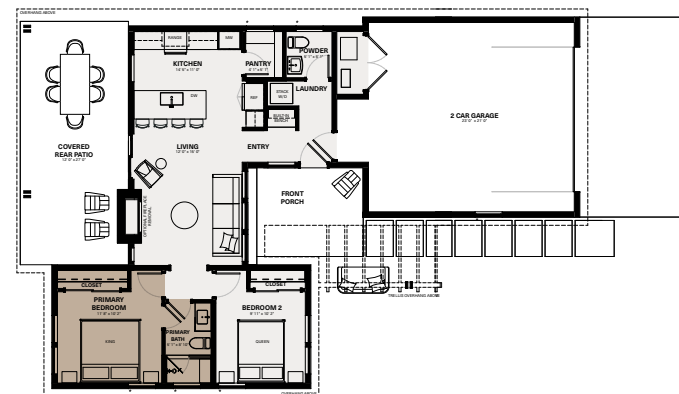
Woodpecker's Roost is a compact and versatile home. Between three different primary suite options and a powder room or laundry room layout, the home can be configured to best fit a home owner's space needs. Woodpecker's Roost truly celebrates connection to the outdoors with a covered trellis entry and an expansive covered rear patio.



WOODPECKER'S ROOST PLAN ABOVE: 1,014 SF 2 BED 1.5 BATH 2 CAR GARAGE



WOODPECKER'S ROOST PLAN ABOVE: 1,014 SF 2 BED 2 BATH 2 CAR GARAGE



WOODPECKER'S ROOST PLAN ABOVE: 938 SF 2 BED 1.5 BATH 2 CAR GARAGE



ARCHITECTURAL STYLE: CLEAN CRAFTSMAN



ARCHITECTURAL STYLE: BOLD & MINIMAL



ARCHITECTURAL STYLE: MODERN RUSTIC



TRELLIS ENTRY



COVERED REAR PATIO: MODERN RUSTIC

DESIGN FEATURES

- **Exterior Entertainment** Placing as much focus on the exterior as it does the interior, Woodpecker's Roost creates ample living space outdoors to enjoy year round.
- **Open and Airy Living Space** With Vaulted ceiling, an anchoring fireplace and windows that surround the space, the main living space creates the perfect connecting space within the home.
- **Primary Suite Options** With three different options available that range in overall size, the number of bathrooms and layout create a range of options to select from that best fit your needs.

DESIGN OPTIONS & UPGRADES

With The Grove's custom design process, you'll select your Lot, Exterior Architectural Style, Interior Finishes, Fixtures, Appliances, and Design Features throughout your home. Work with your Grove Consultant to create a home that reflects your needs and style. Begin with selecting from layout options and creating your custom floor plan:

- **Kitchen:** Appliance package options with multiple sizes and brands
- **Living:** Wood Beams and Glass Sliding Door Sizes
- **Primary Bath:** Multiple layouts with a range in closet size and plumbing combinations and selections. Reduce your home's square footage with a single smaller primary bathroom for an approximate 75 sf reduction.
- **Bath 2 and/or Powder:** Various plumbing customizations with layout customizations to create the right layout combinations for you.
- **Laundry and Storage:** Appliance Packages and Storage layout customizations that fit your functional and storage needs.

visit thegrovemontrose.com to customize your home now



LIVING ROOM & FIREPLACE



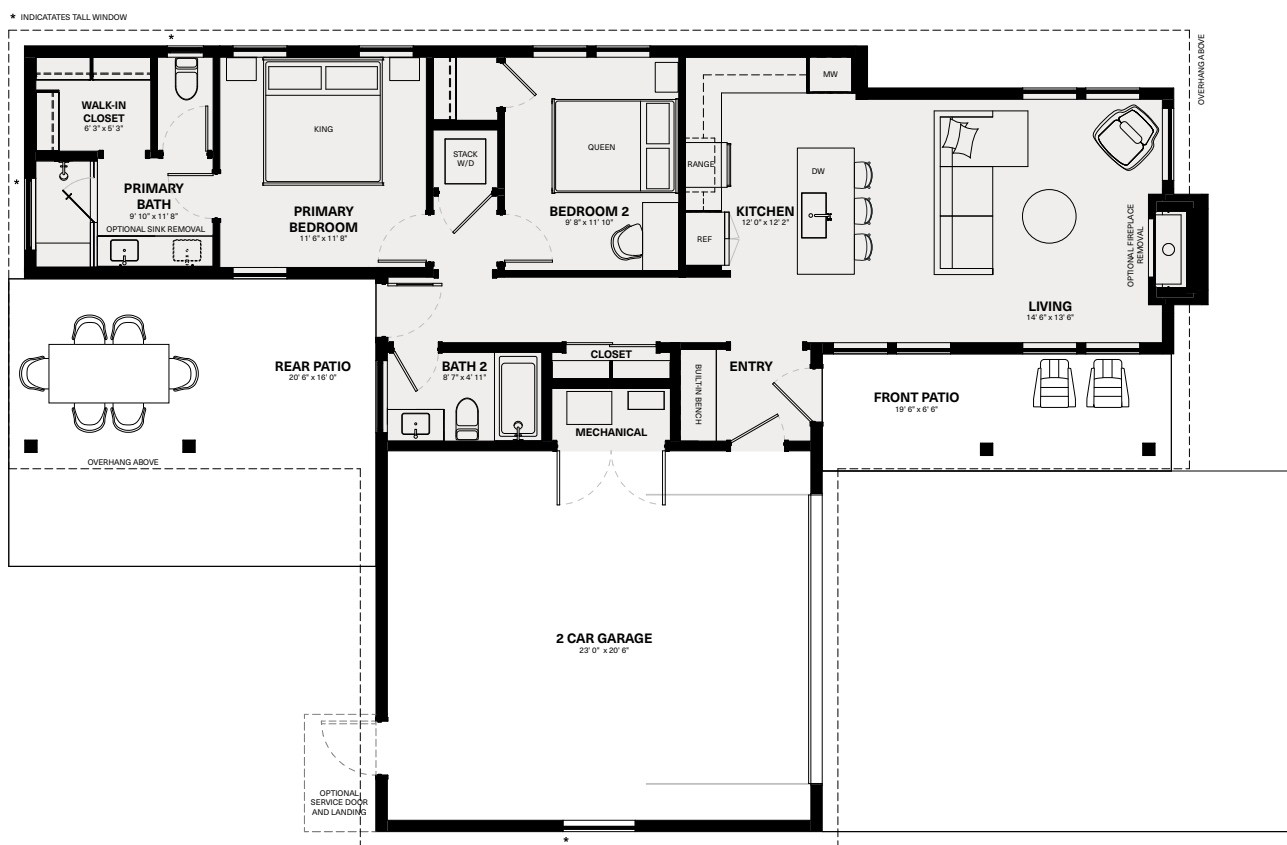
CENTRAL KITCHEN



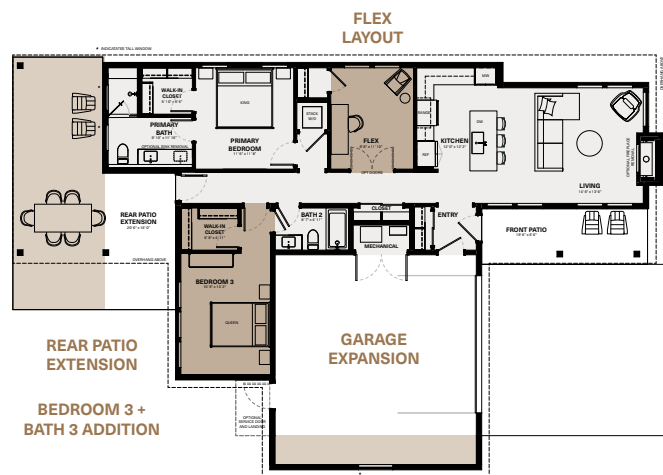
Hedgehog Burrow

1,113 - 1,388 sf 1 Level 2 - 3 Bedrooms 2 - 3 Bathrooms 2 - 2.5 Car Garage

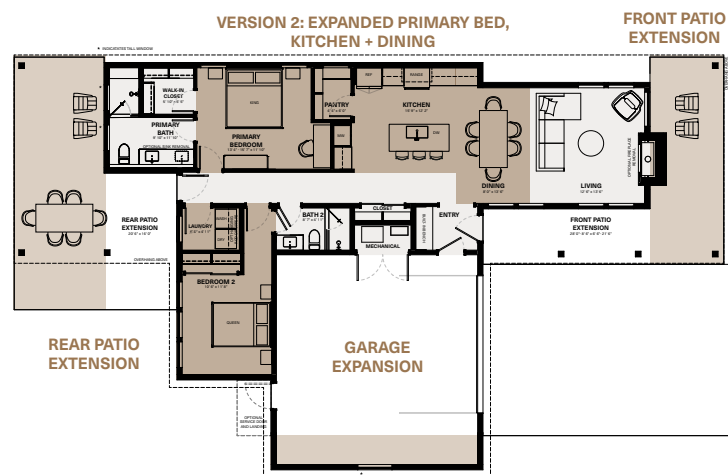
Hedgehog Burrow is anchored by the stone fireplace and vaulted living room at the front of the home. The linear style floor plan has front and rear patio extensions - explore the various covered outdoor patio combinations available. With an additional bedroom and bathroom extension available, living space is adaptable to your needs.



HEDGEHOG BURROW PLAN ABOVE: 1,113 SF 2 BEDROOM 2 BATHROOM 2 CAR GARAGE



UPGRADED PLAN ABOVE: 1,388 SF 2 BEDROOM 2 BATHROOM 2 CAR GARAGE



UPGRADED PLAN ABOVE: 1,382 SF 2 BEDROOM 2 BATHROOM 2 CAR GARAGE



DESIGN FEATURES

- **Shotgun Style Living** Hedgehog Burrow offers a linear floor plan that allows great flow for entertainment on the main floor from your front entry patio all the way to the covered rear patio and backyard.
- **Flex Space** Easily convert between a den, office, or an additional bedroom with a closet.
- **Adaptability** Whether you're looking to have 2 or 3 bedrooms, explore adding an additional bedroom and bathroom suite.
- **Covered Patios** Extending from the entry all the way to the backyard, exterior patio spaces in the front and rear of the home celebrate connections to the outdoors.

DESIGN OPTIONS & UPGRADES

With The Grove's custom design process, you'll select your Lot, Exterior Architectural Style, Interior Finishes, Fixtures, Appliances, and Design Features throughout your home. Work with your Grove Consultant to create a home that reflects your needs and style. Begin with selecting from layout options and creating your custom floor plan:

- **Kitchen / Dining:** Appliance package options with multiple sizes and brands.
- **Flex / Bedroom 2:** Layout options
- **Primary Bath:** Various plumbing customizations
- **Bath 2:** Various plumbing customizations
- **Bedroom 3 and Bath 3:** Addition adds approx 275 sf to overall home. Bed 3 and Bath 3 both have multiple layout and plumbing customizations.
- **Patio Extensions** Optional covered patio extensions in the front or rear of the home.
- **Version 2 Upgrade:** Explore the upgraded plan with an expanded kitchen and walk-in pantry, dining space, and laundry layout options.

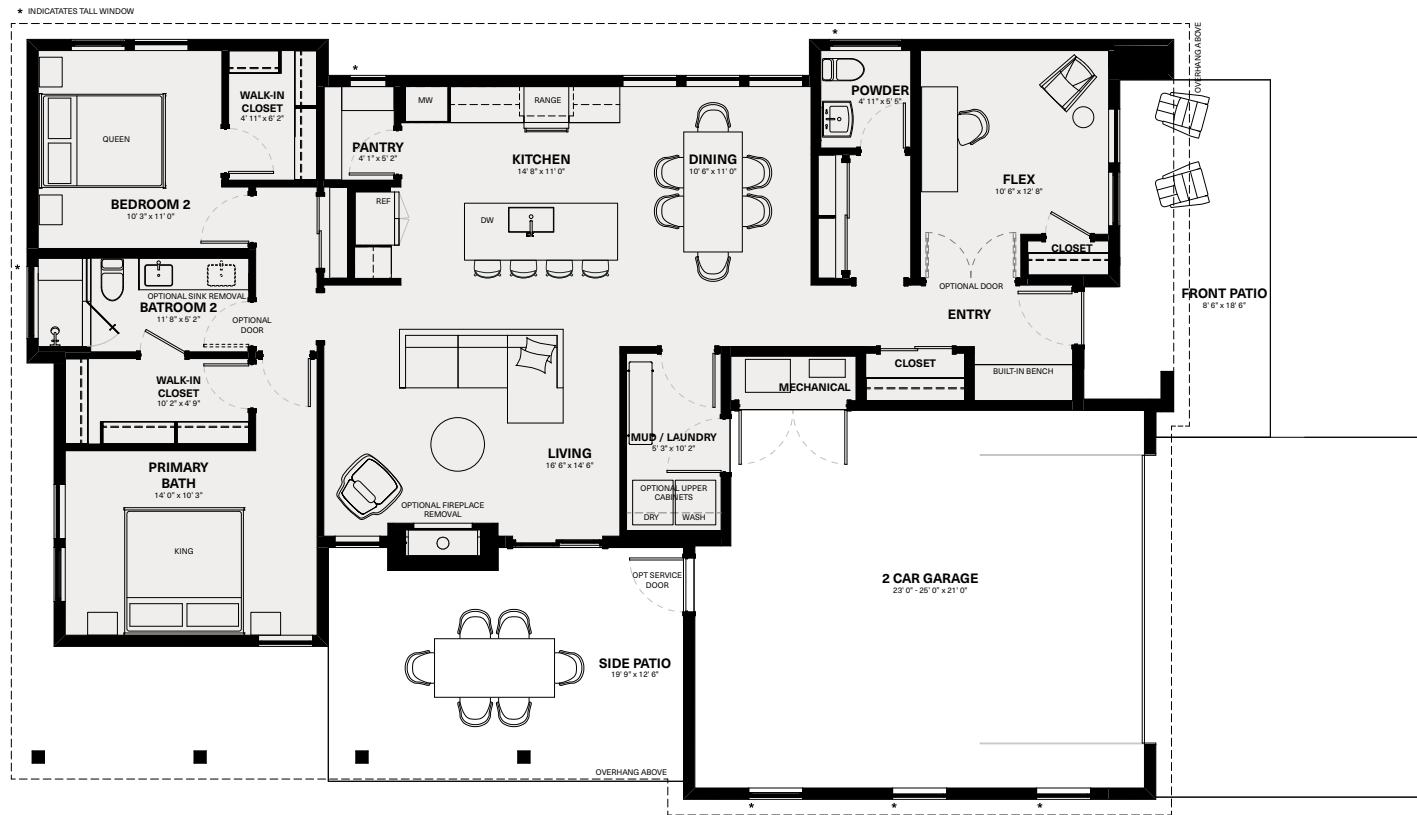
visit thegrovemontrose.com to customize your home now



Fox Den

1,553 - 1,660 sf 1 Level 2 - 3 Bedrooms 1.5 - 3 Bathrooms 2 - 3 Car Garage

The Fox Den is a highly flexible home with a range of primary bedroom and bathroom layouts to scale to your needs. The heart of the home - your kitchen, dining and living space - has vaulted ceilings with ample room for entertaining. Enjoy your side and front patio decking options.



FOX DEN PLAN ABOVE: 1,553 SF 2 BEDROOMS 1.5 BATHROOMS 2 CAR GARAGE



FOX DEN PLAN ABOVE: 1,660 SF 3 BEDROOMS 3 BATHROOMS 2 CAR GARAGE



LIVING ROOM FIREPLACE



ARCHITECTURAL STYLE: MODERN RUSTIC



ARCHITECTURAL STYLE: BOLD & MINIMAL



ARCHITECTURAL STYLE: CLEAN CRAFTSMAN



CLEAN CRAFTSMAN, SIDE PATIO



BRIGHT AND CONNECTED KITCHEN & DINING



VAULTED LIVING, DINING AND KITCHEN SPACES

DESIGN FEATURES

- **Primary Suite** Fox Den has two different primary bathroom sizes to scale to your needs. Explore the layouts and upgrade features available to create your ideal fit.
- **Spacious Living** The heart of the home, your kitchen, dining and living space, has vaulted ceiling with ample room for entertaining.
- **Exterior Entertainment** You'll enjoy wonderful flow to your covered exterior patio right off the kitchen.
- **Adaptability** Whether you're looking to have 2 or 3 bedrooms, explore adding an additional bedroom or converting the flex space into an en-suite.

DESIGN OPTIONS & UPGRADES

With The Grove's custom design process, you'll select your Lot, Exterior Architectural Style, Interior Finishes, Fixtures, Appliances, and Design Features throughout your home. Work with your Grove Consultant to create a home that reflects your needs and style. Begin with selecting from layout options and creating your custom floor plan:

- **Garage:** Optional 3rd Car Bay and service door with landing
- **Laundry:** Appliance Packages and Storage above washer and dryer
- **Kitchen:** Appliance package options with multiple sizes and brands
- **Living:** Wood Beams and Glass Sliding Door Sizes
- **Flex / Bedroom 3:** layout options
- **Bath 2:** Various plumbing customizations
- **Powder / Bath 3:** Various plumbing customizations and layout upgrade for full sized bath.
- **Primary Bath:** Multiple layouts with a range in closet size and plumbing combinations and selections. Addition adds 107sf to a primary bathroom en-suite.
- **Primary Bedroom:** Side Patio connection with glass sliding door with the enlarged primary bath layout

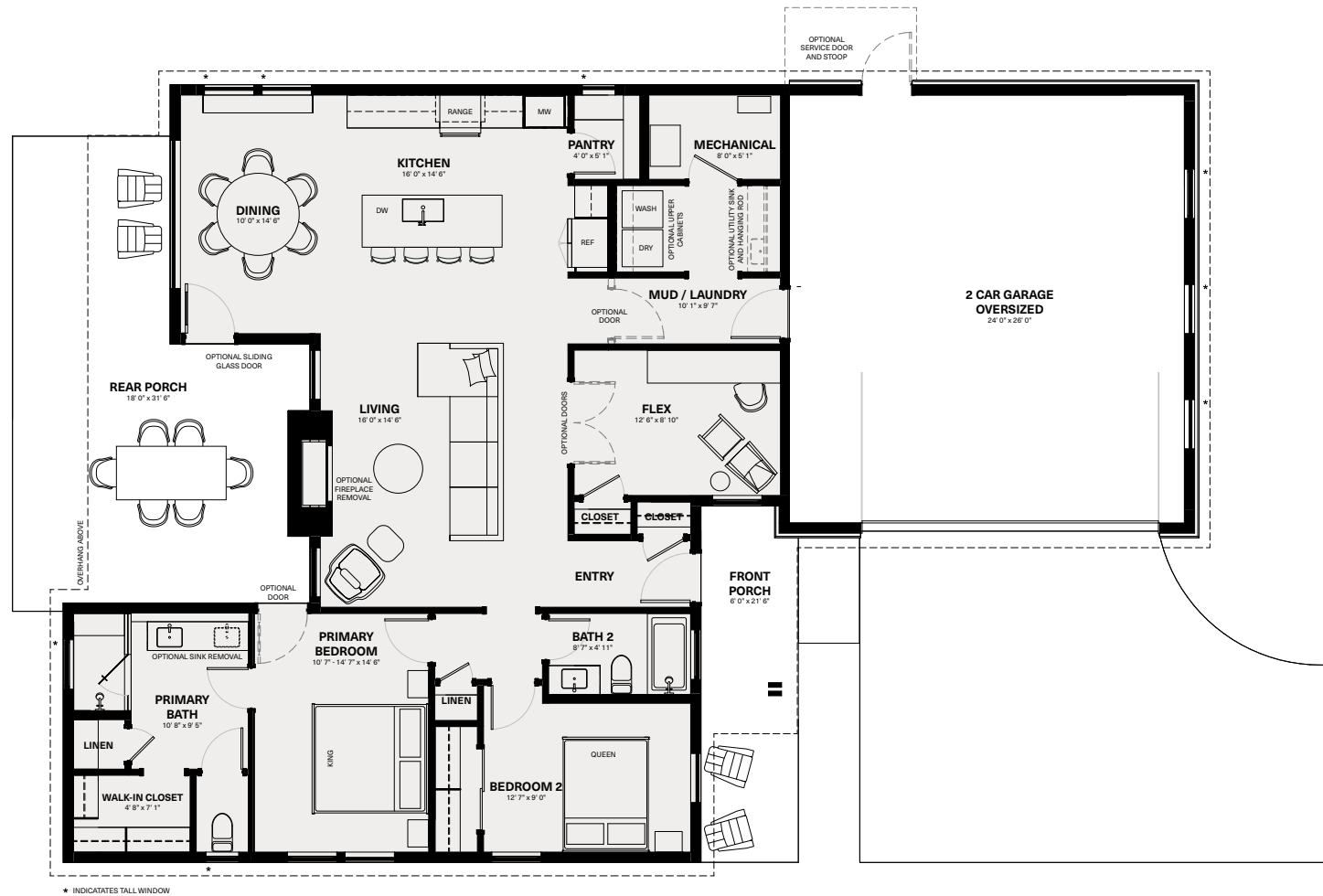
visit thegrovemontrose.com to customize your home now



Chipmunk Cottage

1,640 - 1,703 sf 1 Level 2-3 Bedrooms 2 Bathrooms 2 oversized - 3 Car Garage

Chipmunk Cottage finds the balance between a quiet respite and a home for entertaining. Living and dining areas are open to the kitchen, ideal for family and guests. Enjoy the oversized garage that gives great function while having splendid curb appeal. The covered rear patio is accessed from the dining or primary bedroom and flows directly to your backyard.



LIVING SPACE THAT CONNECTS TO THE OUTDOORS



SPACIOUS KITCHEN AND DINING



VAULTED LIVING ROOM



BOLD & MINIMAL, COVERED PATIO



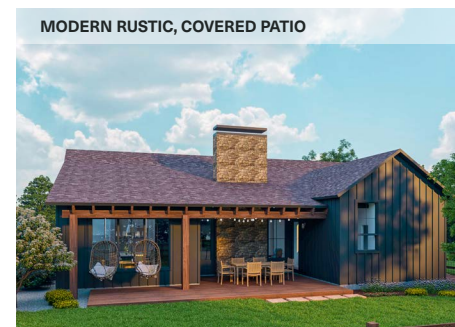
ARCHITECTURAL STYLE: CLEAN CRAFTSMAN



ARCHITECTURAL STYLE: MODERN RUSTIC



ARCHITECTURAL STYLE: BOLD & MINIMAL



MODERN RUSTIC, COVERED PATIO

DESIGN FEATURES

- **Vaulted Ceilings** Whether you like a clean, white ceiling or one with rustic beams, we've got you covered. Our spacious living room space has vaulted ceilings and an optional fireplace.
- **Covered Outdoor Living** Indoor-outdoor relationships are great in Montrose. Enjoy your morning coffee or evening wine on your covered rear porch.
- **Oversized Garage** Give the people what they ask for! We've got you when it comes to extra shop space or room for small "toys".
- **Flex Space** Located in the heart of the home. This space can easily convert between a den, office, or an additional bedroom.

DESIGN OPTIONS & UPGRADES

With The Grove's custom design process, you'll select your Lot, Exterior Architectural Style, Interior Finishes, Fixtures, Appliances, and Design Features throughout your home. Work with your Grove Consultant to create a home that reflects your needs and style. Begin with selecting from layout options and creating your custom floor plan:

- **Garage:** Optional 3rd Car Bay and service door with landing
- **Laundry:** Appliance Packages and Storage above washer and dryer, and utility sink with cabinets and clothes hanging rod
- **Kitchen:** Appliance package options with multiple sizes and brands
- **Dining:** Glass Sliding Door or Glass Swing Door
- **Living:** Wood Beams
- **Primary Bedroom:** 4' Extension and Patio Door Option
- **Flex / Bedroom 3:** Layout options
- **Primary Bath:** Multiple layouts with a range in closet size and plumbing combinations and selections
- **Bath 2:** Various plumbing customizations

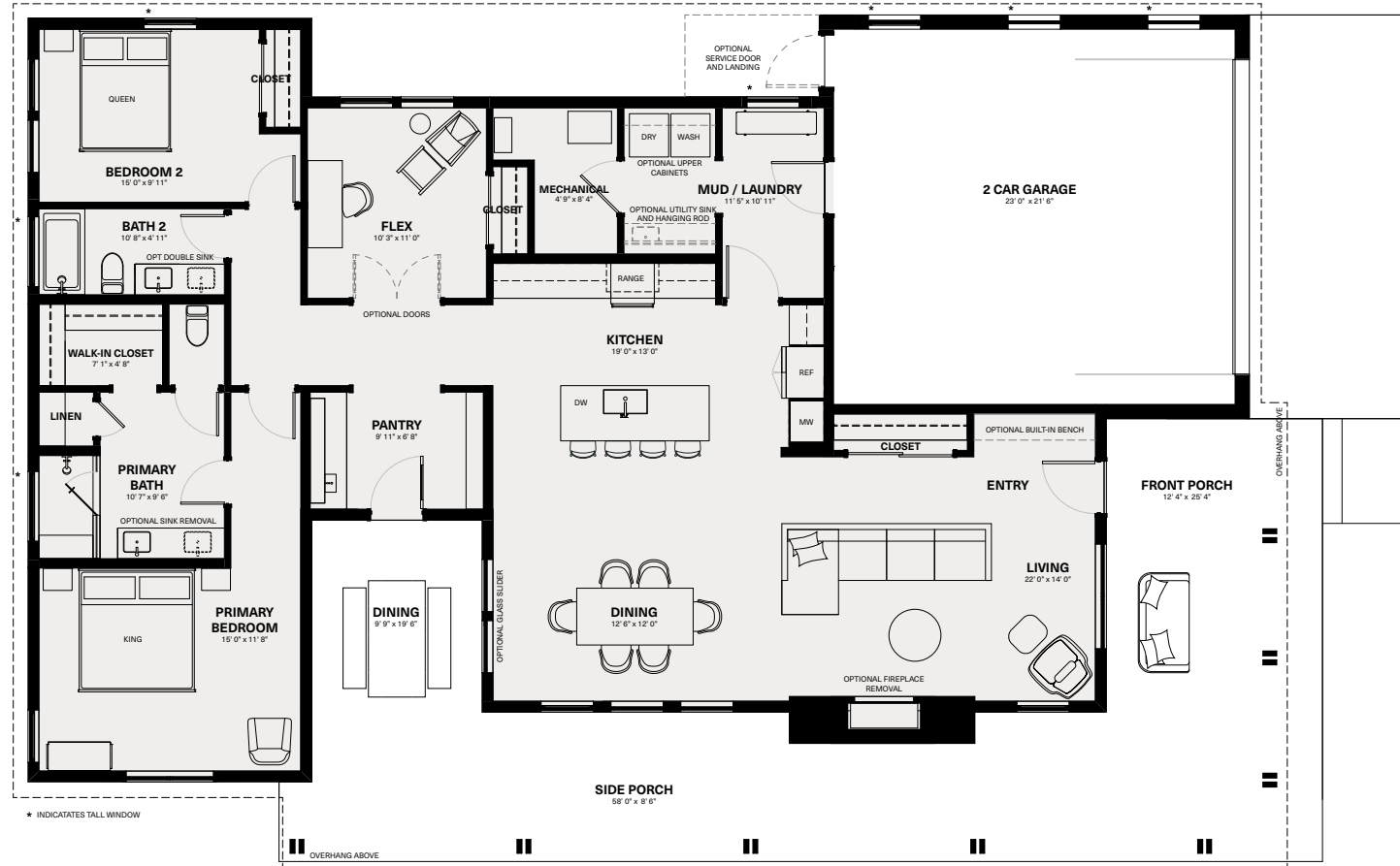
visit thegrovemontrose.com to customize your home now



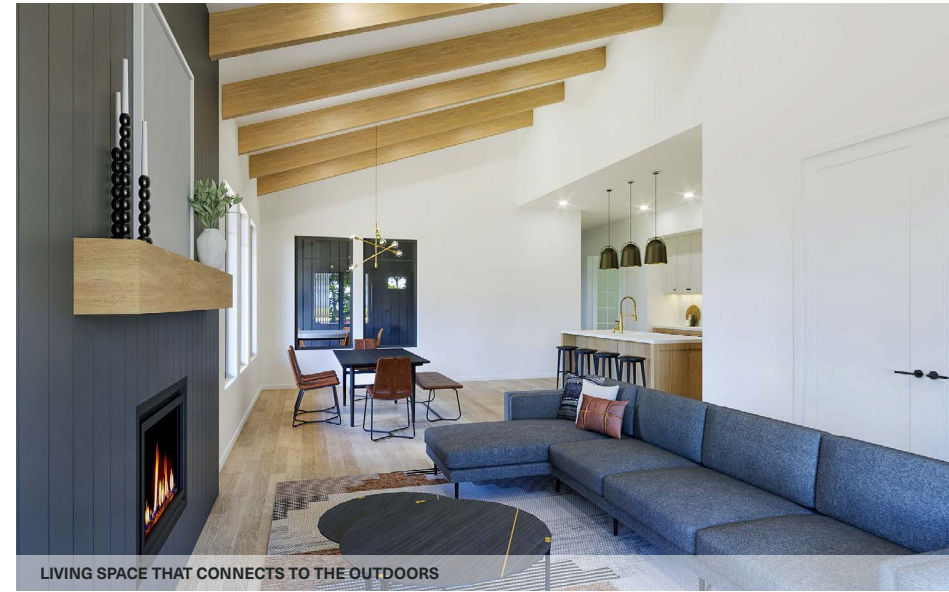
Deer Homestead

1,951 sf | 1 Level | 2 - 3 Bedrooms | 2 Bathrooms | 2 - 3 Car Garage

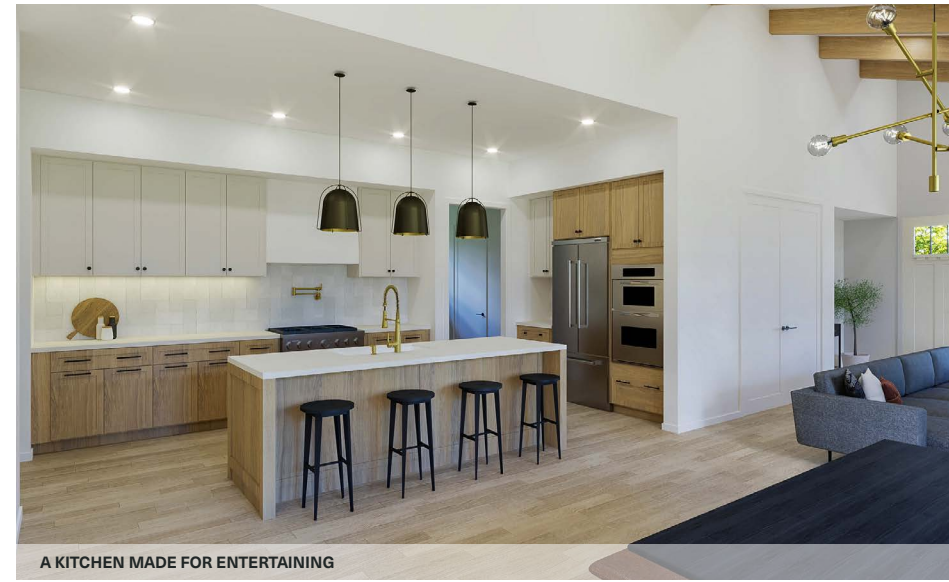
Enjoy your wrap around front porch that extends into covered living space on your side porch. Spaces are bright and airy with vaulted living, dining, and bedroom spaces take advantage of the home's natural light. Ideal for entertaining, Deer Homestead has a wonderful Pantry space that acts as a second prep zone or wet bar on your way to the outdoor dining.



WRAP AROUND SIDE PORCH WITH COVERED DINING



LIVING SPACE THAT CONNECTS TO THE OUTDOORS



A KITCHEN MADE FOR ENTERTAINING



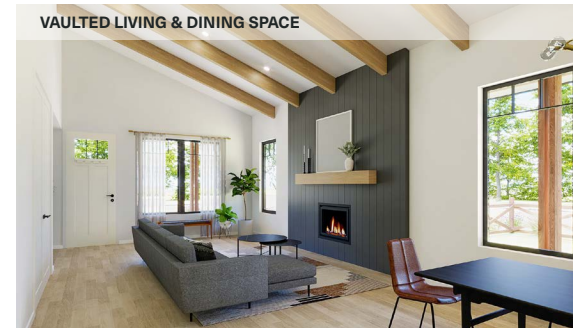
ARCHITECTURAL STYLE: CLEAN CRAFTSMAN



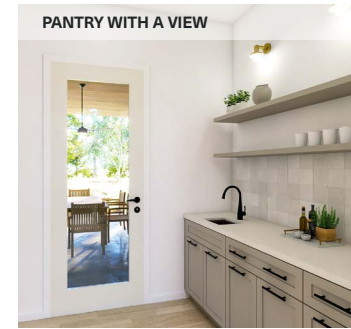
ARCHITECTURAL STYLE: MODERN RUSTIC



ARCHITECTURAL STYLE: BOLD & MINIMAL



VAULTED LIVING & DINING SPACE



PANTRY WITH A VIEW

DESIGN FEATURES

- **Patio Living** Enjoy your wrap around front patio! Each available style of the Deer Homestead offers different architectural detailing for the patio structure and connections.
- **Primary Bathroom Suite** Experience spa-like luxury bathroom upgrades and layout options that best fit your needs
- **Kitchen and Pantry** Deer Homestead has a range of appliance and storage upgrades to fit your culinary preferences. The walk-through pantry can serve as a wet bar or as a prep kitchen through different cabinet upgrades and layouts.

DESIGN OPTIONS & UPGRADES

With The Grove's custom design process, you'll select your Lot, Exterior Architectural Style, Interior Finishes, Fixtures, Appliances, and Design Features throughout your home. Work with your Grove Consultant to create a home that reflects your needs and style. Begin with selecting from layout options and creating your custom floor plan:

- **Garage:** Optional 3rd Car Bay and service door with landing
- **Laundry:** Appliance Packages and Storage above washer and dryer, and utility sink with cabinets and clothes hanging rod
- **Kitchen:** Appliance package options with multiple sizes and brands
- **Pantry:** Open shelving or cabinets
- **Living:** Wood beams, Optional built-in bench at Entry and Glass Sliding Door Sizes at Dining
- **Flex / Bedroom 3:** Layout options
- **Primary Bath:** Multiple layouts with a range in closet size and plumbing combinations and selections
- **Bath 2:** Various plumbing customizations

visit thegrovemontrose.com to customize your home now



Bear's Lair

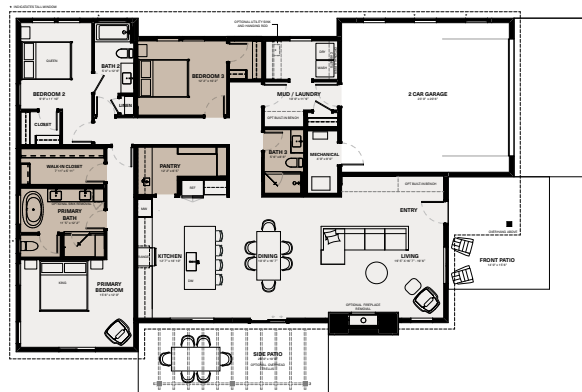
2,137 - 2,178 sf 1 Level 2 - 3 Bedrooms 2.5 - 3 Bathrooms 2 - 3 Car Garage

The Bear's Lair is a single level home with a focus on ample natural light and easy flow from your living, dining, and kitchen to the exterior patios. The home offers a vaulted ceiling in the living room as well as vaulted ceilings within bedrooms.



BEAR'S LAIR PLAN ABOVE: 2,137 SF 2 BEDROOM 2 BATHROOM 2 CAR GARAGE

PRIMARY BATH ADDITION
BEDROOM 3 + BATH 3 LAYOUT



UPGRADED PLAN ABOVE: 2,178 SF 3 BEDROOM 3 BATHROOM 2 CAR GARAGE



PANTRY WITH PREP BAR



MODERN RUSTIC, ENTRY PATIO



CONNECTED LIVING, DINING AND KITCHEN SPACE



VAULTED LIVING ROOM SPACE



KITCHEN WITH AMPLE STORAGE



BOLD & MINIMAL, ENTRY PATIO



CLEAN CRAFTSMAN, ENTRY PATIO

DESIGN FEATURES

- **Side Yard** A featured side patio is underrated. Bear's Lair is designed to capitalize on having a nice back yard that wraps around as an extension to an extremely functional side yard.
- **Primary Bedroom** Show stopper space with natural light and vaulted ceilings.
- **Flex Space** Bear's Lair offers a secluded flex space. This space can easily convert between a den, office, or an additional bedroom with a walk-in closet.
- **Natural Light** This home design takes advantage of natural lighting on all sides of home. Large windows and glass sliding doors flood the living space with warm light.

DESIGN OPTIONS & UPGRADES

With The Grove's custom design process, you'll select your Lot, Exterior Architectural Style, Interior Finishes, Fixtures, Appliances, and Design Features throughout your home. Work with your Grove Consultant to create a home that reflects your needs and style. Begin with selecting from layout options and creating your custom floor plan:

- **Garage:** Optional 3rd Car Bay and/or Bay Extension and service door with landing
- **Laundry:** Appliance Packages and Storage above washer and dryer, and utility sink with cabinets and clothes hanging rod
- **Kitchen:** Appliance package options with multiple sizes and brands
- **Living:** Wood beams, Optional built-in bench at Entry and Glass Sliding Door Sizes at Dining
- **Flex / Bedroom 3:** Layout options
- **Primary Bath:** Multiple layouts with a range in closet size and plumbing combinations and selections
- **Bath 2:** Various plumbing customizations

visit thegrovemontrose.com to customize your home now



Hare's Hollow

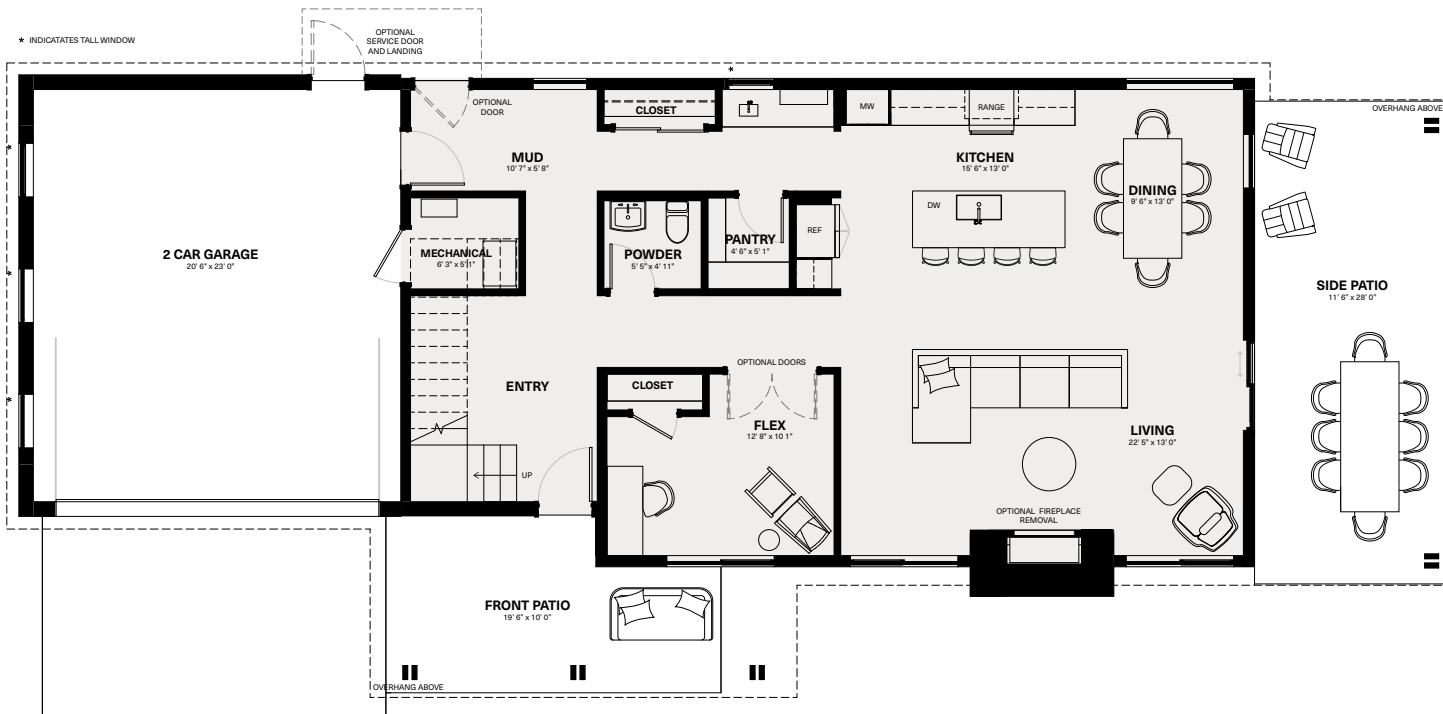
2,283 sf 2 Level 3 - 4 Bedrooms 2.5 - 3 Bathrooms 2 - 3 Car Garage

Hare's Hollow offers a long floor plan that allows great flow for entertainment on the main floor or for the bedrooms all on the second floor. This 2 story home offers a double volume entry as you walk through the front door. Enjoy nice or even rainy evenings under your covered patio off the main dining and living space.

SECOND LEVEL: 1,002 SF



MAIN LEVEL: 1,281 SF



ARCHITECTURAL STYLE: CLEAN CRAFTSMAN



ARCHITECTURAL STYLE: BOLD & MINIMAL



ARCHITECTURAL STYLE: MODERN RUSTIC



MODERN RUSTIC, SIDE PATIO



LIVING SPACE CONNECTED TO THE OUTDOORS



KITCHEN SPACE WITH HIDDEN PANTRY



BOLD & MINIMAL, SIDE PATIO



LIVING ROOM FIREPLACE



DESIGN FEATURES

- **Double Volume Entry** Make an impression with a great entry space. You'll notice as you walk in a spacious loft atop of the stair.
- **Shotgun Style Living** Hare's Hollow offers a long floor plan that allows great flow for entertainment on the main floor or for the bedrooms all on the second floor.
- **Flex Space** Hare's Hollow offers a wonderful flex space on the main level that can best function with your needs as an office, den or bedroom. The adjacent powder can expand to a full bathroom as well.

DESIGN OPTIONS & UPGRADES

With The Grove's custom design process, you'll select your Lot, Exterior Architectural Style, Interior Finishes, Fixtures, Appliances, and Design Features throughout your home. Work with your Grove Consultant to create a home that reflects your needs and style. Begin with selecting from layout options and creating your custom floor plan:

- **Garage:** Optional 3rd Car Bay and service door with landing
- **Kitchen:** Appliance package options with multiple sizes and brands
- **Pantry / Storage:** Prep Pantry or built-in storage layout
- **Living:** Glass Sliding Door Sizes
- **Flex / Bedroom 4:** Layout options
- **Powder / Bath 3:** Various plumbing customizations and layout upgrade for full sized bath.
- **Laundry:** Appliance Packages and Storage above washer and dryer, and utility sink with cabinets and clothes hanging rod
- **Primary Bath:** Various plumbing customizations
- **Bath 2:** Various plumbing customizations

visit thegrovemontrose.com to customize your home now



Owl's Nest

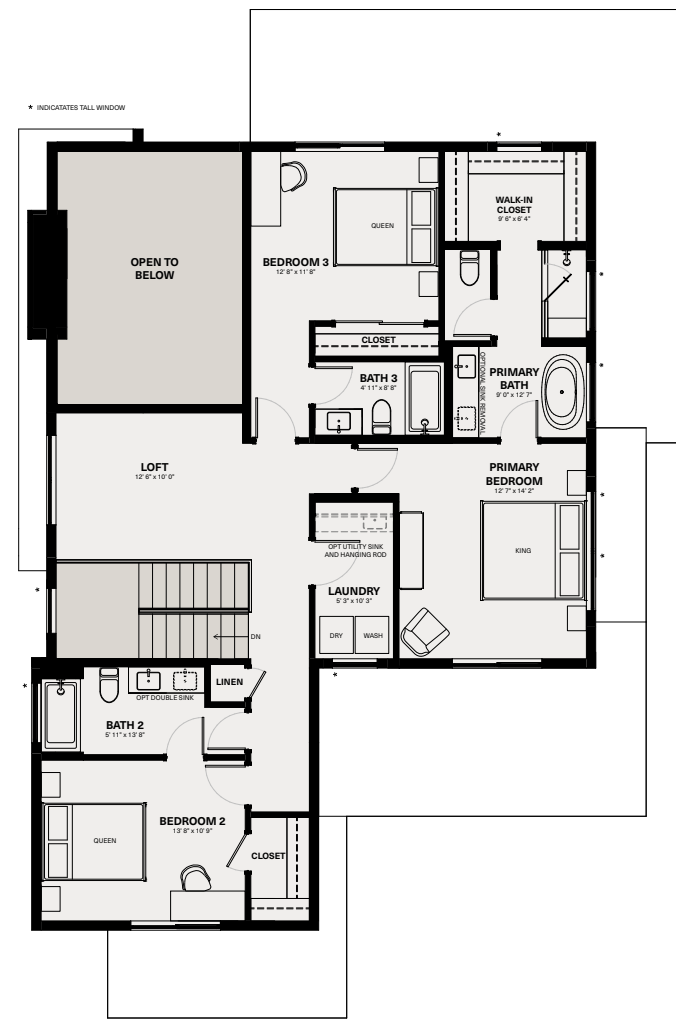
2,667 sf 2 Level 3 - 5 Bedrooms 3.5 - 4 Bathrooms 2 - 3 Car Garage

The Owl's Nest is packed with great design options and space. Take advantage of the San Juan Mountain views from the rear porch or the roof deck off of the Primary Bedroom. Living space feels expansive with surrounding windows and vaulted ceilings. Explore the bedroom combinations that best fit your needs with the convertible Flex Space and Loft.

MAIN LEVEL: 1,353 SF



SECOND LEVEL: 1,314 SF



ARCHITECTURAL STYLE: CLEAN CRAFTSMAN



ARCHITECTURAL STYLE: MODERN RUSTIC



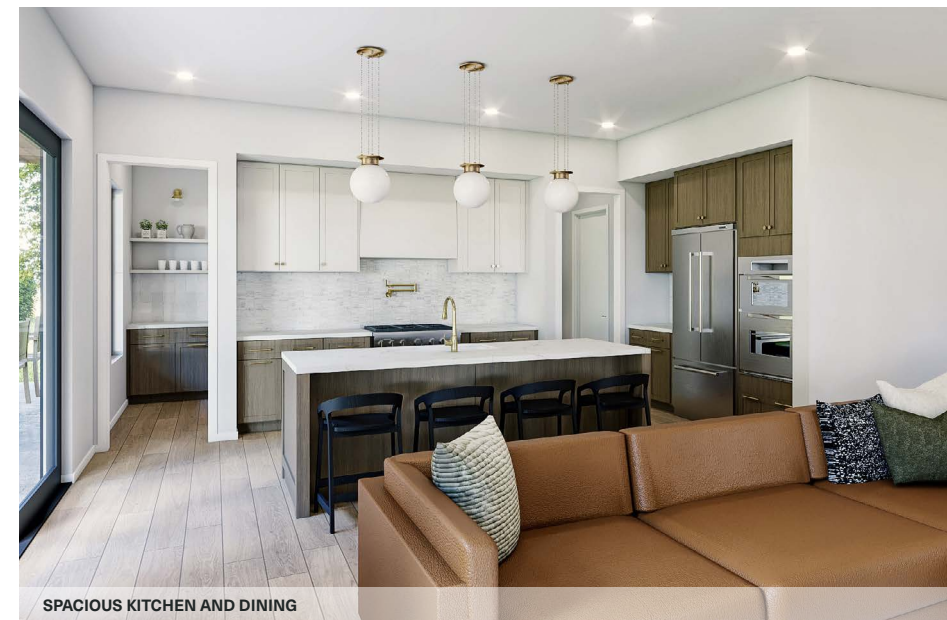
ARCHITECTURAL STYLE: BOLD & MINIMAL



LIVING SPACE THAT CONNECTS TO THE OUTDOORS



SPACIOUS KITCHEN AND DINING



SPACIOUS KITCHEN AND DINING

DESIGN FEATURES

- **Covered Rear Patio** Extending from your Living and Kitchen space, your exterior patio provides additional space to entertain or take in the outdoors.
- **Flexibility** The upstairs features a loft space that can convert into an additional enclosed bedroom space. The downstairs flex space easily functions as an office, den or additional bedroom.
- **Roof Deck** Optional roof deck off the primary bedroom and upper level hallway (view on interactive floor plan)

DESIGN OPTIONS & UPGRADES

With The Grove's custom design process, you'll select your Lot, Exterior Architectural Style, Interior Finishes, Fixtures, Appliances, and Design Features throughout your home. Work with your Grove Consultant to create a home that reflects your needs and style. Begin with selecting from layout options and creating your custom floor plan:

- **Garage:** Optional 3rd Car Bay and service door with landing
- **Kitchen:** Appliance package options with multiple sizes and brands
- **Pantry:** Various storage layouts
- **Living:** Wood Beams and Glass Sliding Door Sizes
- **Flex / Bedroom 4:** Layout options
- **Powder / Bath 4:** Various plumbing customizations and layout upgrade for full sized bath.
- **Loft / Bedroom:** an open loft or bedroom and closet configuration available
- **Laundry:** Appliance Packages and Storage above washer and dryer, and utility sink with cabinets and clothes hanging rod
- **Primary Bath:** Various plumbing customizations
- **Bath 2 / 3:** Various plumbing customizations

visit thegrovemontrose.com to customize your home now

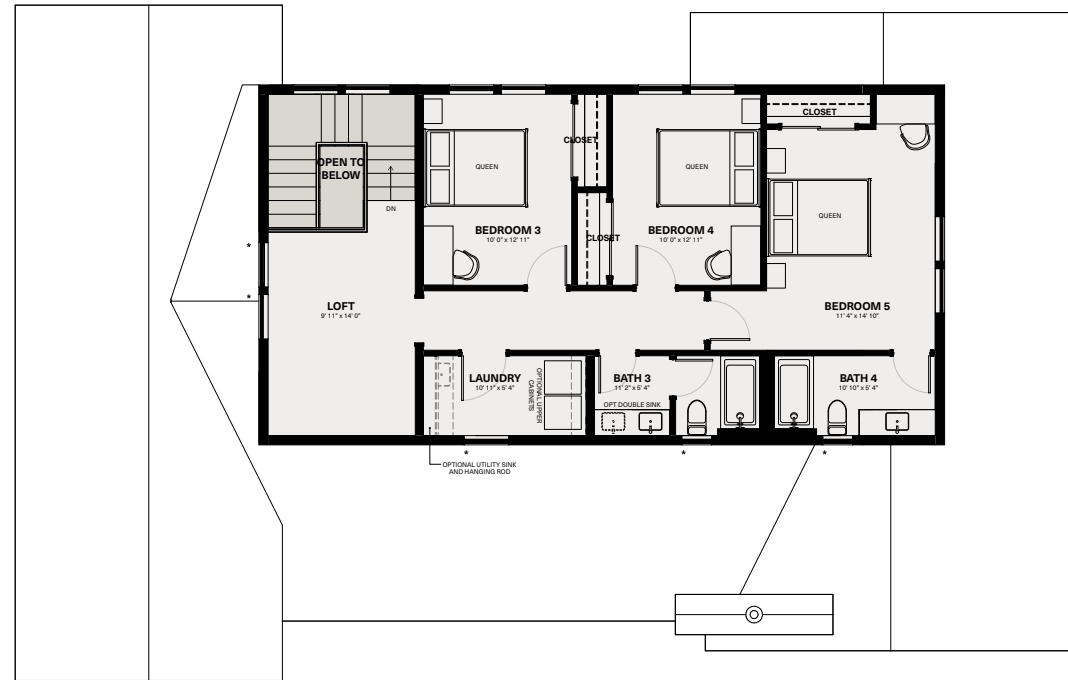


Deer Homestead

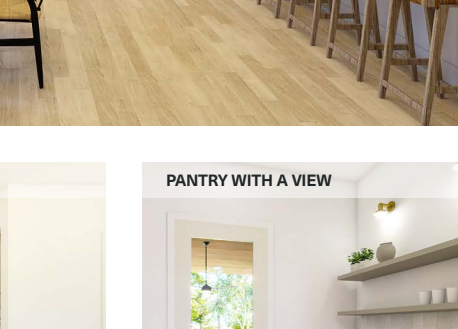
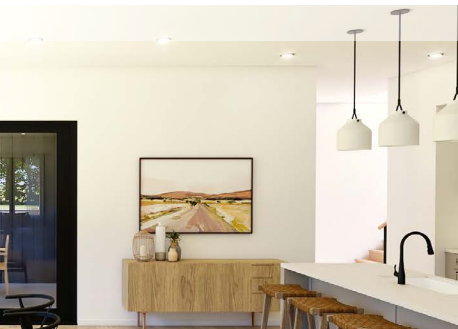
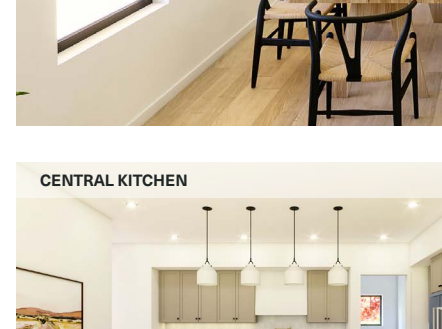
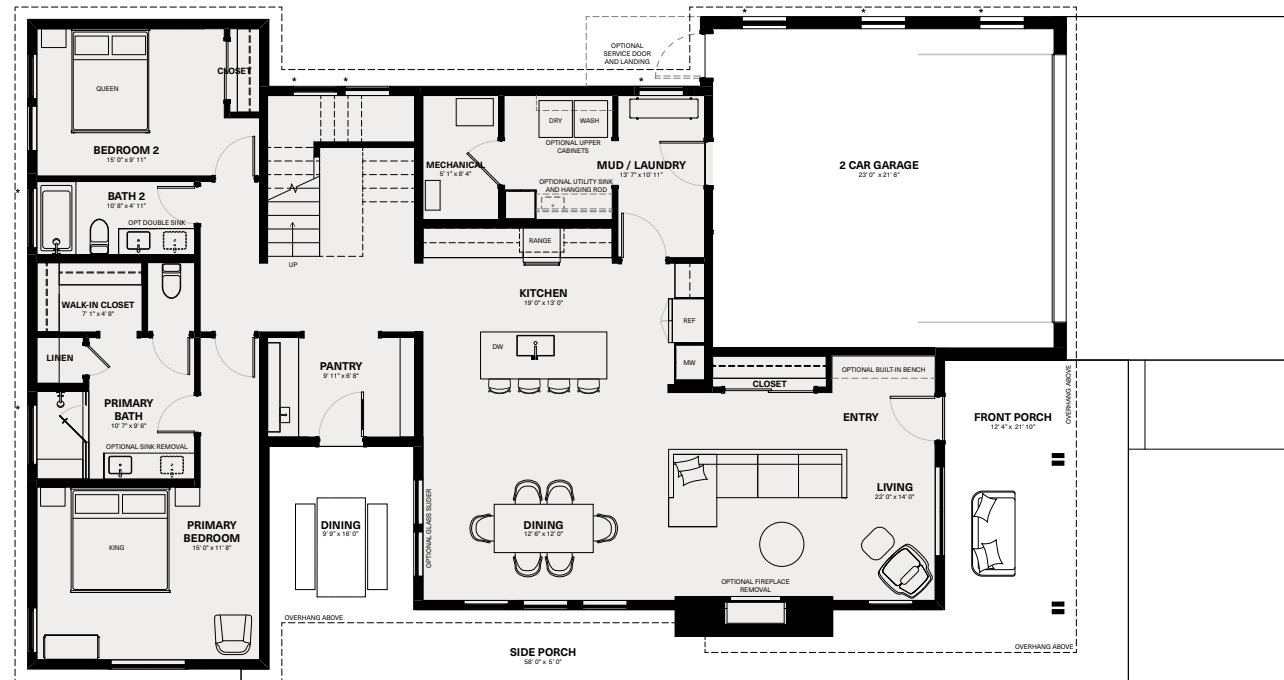
2,976 sf 2 Level 5 Bedrooms 4 Bathrooms 2 - 3 Car Garage

Enjoy your wrap around front porch that extends into covered living space on your side porch. Ideal for entertaining, Deer Homestead has a wonderful Pantry space that acts as a second prep zone or wet bar on your way to the outdoor dining. This home offers a wonderful main level plan while providing the primary bedroom wing and bedroom off the main level. The second level is fitted with a spacious loft, 3 bedrooms and an additional (optional) laundry room.

SECOND LEVEL: 1,025 SF



MAIN LEVEL: 1,951 SF



DESIGN FEATURES

- Patio Living** Enjoy your wrap around front patio! Each available style of the Deer Homestead offers different architectural detailing for the patio structure and connections.
- Primary Bathroom Suite** Experience spa-like luxury bathroom upgrades and layout options that best fit your needs
- Kitchen and Pantry** Deer Homestead has a range of appliance and storage upgrades to fit your culinary preferences. The walk-through pantry can serve as a wet bar or as a prep kitchen through different cabinet upgrades and layouts.

DESIGN OPTIONS & UPGRADES

With The Grove's custom design process, you'll select your Lot, Exterior Architectural Style, Interior Finishes, Fixtures, Appliances, and Design Features throughout your home. Work with your Grove Consultant to create a home that reflects your needs and style. Begin with selecting from layout options and creating your custom floor plan:

- Garage:** Optional 3rd Car Bay and service door with landing
- Laundry:** Appliance Packages and Storage above washer and dryer, and utility sink with cabinets and clothes hanging rod. Second Level Laundry location is optional.
- Kitchen:** Appliance package options with multiple sizes and brands
- Pantry:** Open shelving or cabinets
- Living:** Optional built-in bench at Entry and Glass Sliding Door Sizes at Dining
- Primary Bath:** Multiple layouts with a range in closet size and plumbing combinations and selections
- Bath 2:** Various plumbing customizations
- Bath 3:** Various plumbing customizations
- Bath 4:** Various plumbing customizations

visit thegrovemontrose.com to customize your home now

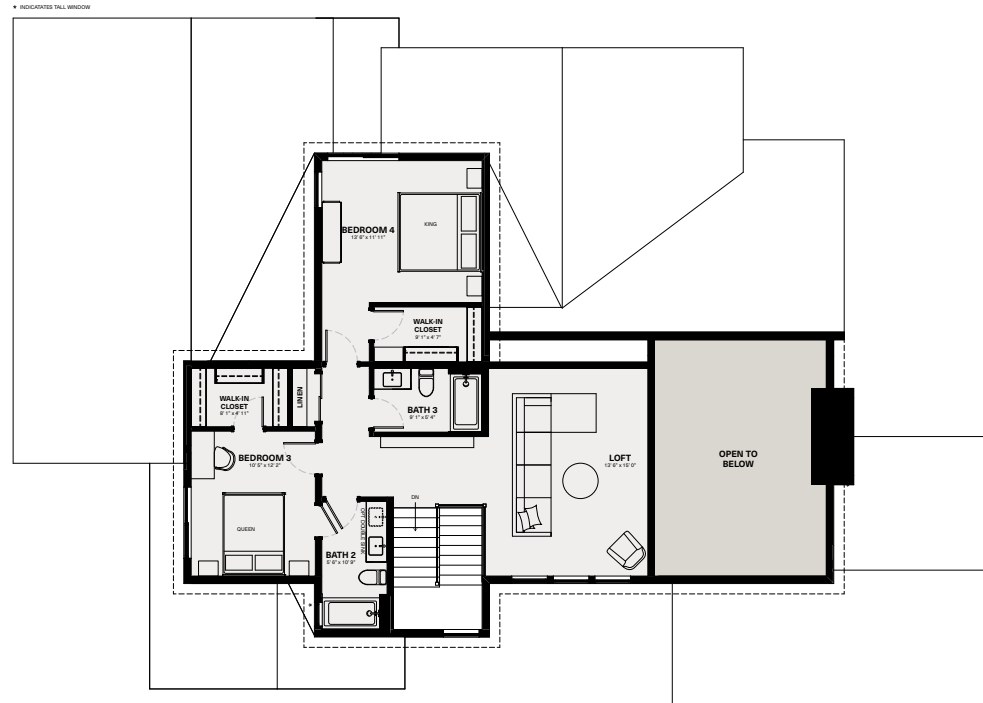


Elk Lodge

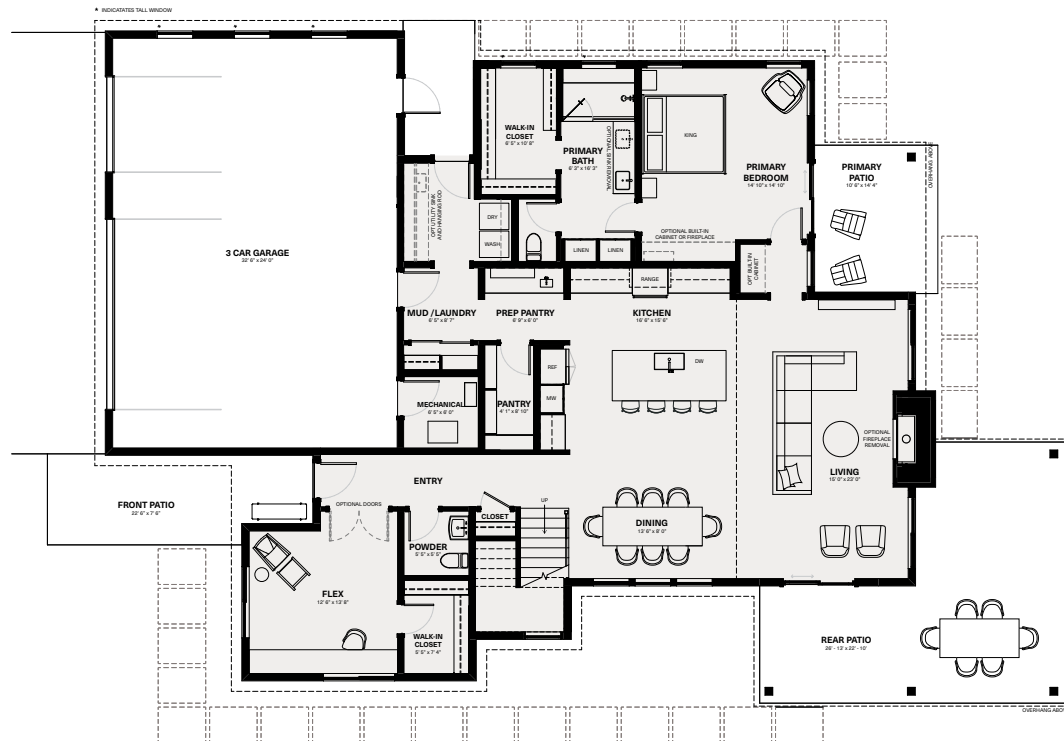
3,011 sf 2 Level 4 - 5 Bedrooms 3.5 - 4 Bathrooms 3 Car Garage

A home design truly fit for entertainers, Elk Lodge has a large covered exterior patio that spills into your backyard. Enjoy the large vaulted living room space with a fireplace, double-height windows and glass sliding doors that allow you to slip outside. The expansive Primary Suite options have a private patio space from the bedroom, a fireplace, ample storage and various Primary Bath Suite layouts.

SECOND LEVEL: 982 SF



MAIN LEVEL: 2,029 SF



ARCHITECTURAL STYLE: CLEAN CRAFTSMAN



ARCHITECTURAL STYLE: MODERN RUSTIC



ARCHITECTURAL STYLE: BOLD & MINIMAL



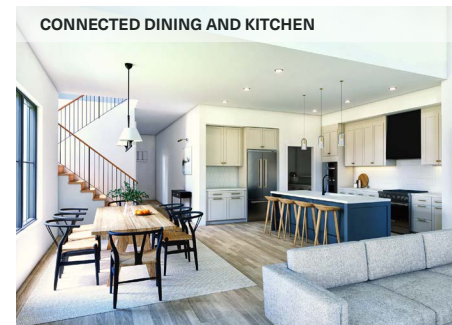
BOLD & MINIMAL, REAR PATIO



GRAND LIVING SPACE CONNECTED TO THE OUTDOORS



KITCHEN SPACE WITH HIDDEN PANTRY



CONNECTED DINING AND KITCHEN



MODERN RUSTIC, REAR PATIO

DESIGN FEATURES

- **Exterior Entertainment** Covered space at the rear patio and private primary patio are ideal for entertainers.
- **Vaulted Living** Double-height windows and a tall fireplace create distinguish the Living Room. In the design process, make sure to ask about the ceiling treatment options for your vaulted ceiling.
- **Kitchen** Elk Lodge's kitchen is ideal for entertainment with the adjacent walk-in pantry and prep pantry.
- **Primary Bedroom Suite** With vaulted ceilings, fireplace and a private patio, the primary suite creates the perfect oasis for buyers. Complete your perfect space with a bathroom and closet that fits your needs.

DESIGN OPTIONS & UPGRADES

With The Grove's custom design process, you'll select your Lot, Exterior Architectural Style, Interior Finishes, Fixtures, Appliances, and Design Features throughout your home. Work with your Grove Consultant to create a home that reflects your needs and style. Begin with selecting from layout options and creating your custom floor plan:

- **Kitchen:** Appliance package options with multiple sizes and brands
- **Pantry / Scullery:** Various layouts for additional prep or storage
- **Living:** Wood Beams and Glass Sliding Door Sizes
- **Flex / Bedroom 4:** layout options
- **Powder / Bath 4:** Various plumbing customizations and layout upgrade for full sized bath.
- **Laundry:** Appliance Packages and Storage above washer and dryer, and utility sink with cabinets and clothes hanging rod. Optional 2nd Level Laundry upgrade available.
- **Primary Bath:** Multiple layouts with a range in closet size and plumbing combinations and selections
- **Bath 2:** Various plumbing customizations
- **Bath 3:** Various plumbing customizations

visit thegrovemontrose.com to customize your home now



Phase 1 Home and Lot Matrix

Explore the interactive Site Neighborhood Map at thegrovemontrose.com to see currently available lots. For a quick reference of homes and lots in phase 1, see the matrix below. Availability subject to change. Contact the Sales Team for more information.

PHASE 1 LOTS	1 LEVEL HOMES										2 LEVEL HOMES																		
	WOODPECKER ROOST 1,014 - 938 SF				HEDGEHOG BURROW 1,113 - 1,388 SF				FOX DEN 1,553 - 1,660 SF				CHIPMUNK COTTAGE 1,640 - 1,703 SF		DEER HOMESTEAD 1,951 SF		BEAR'S LAIR 2,137 - 2,178 SF		HARE'S HOLLOW 2,283 SF		OWL'S NEST 2,667 SF		DEER HOMESTEAD 2,976 SF		ELK LODGE 3,011 SF				
	2 CAR	2+ CAR ADDITION	3 CAR GARAGE	3 CAR GARAGE ADDITION	2 CAR GARAGE	2+ CAR ADDITION	1,388 PATIO	3 CAR GARAGE ADDITION	2 CAR GARAGE	3 CAR GARAGE	1,660 REAR PATIO	1,703 REAR PATIO	2 CAR GARAGE	3 CAR GARAGE	2 CAR GARAGE	3 CAR GARAGE	2 CAR GARAGE	3 CAR GARAGE	2 CAR GARAGE	3 CAR GARAGE	2 CAR GARAGE	3 CAR GARAGE	2 CAR GARAGE	3 CAR GARAGE	2 CAR GARAGE	3 CAR GARAGE	2 CAR GARAGE	3 CAR GARAGE	2 CAR GARAGE
1	10,988	0.292	YELLOW ASPEN DR	•	•	•	•	•	•	•	•	•	•	•	•	•	•	•	•	•	•	•	•	•	•	•	•	•	•
2	12,761	0.293	YELLOW ASPEN DR	•	•	•	•	•	•	•	•	•	•	•	•	•	•	•	•	•	•	•	•	•	•	•	•	•	•
3	7,881	0.176	YELLOW ASPEN DR	•	•	•	•	•	•	•	•	•	•	•	•	•	•	•	•	•	•	•	•	•	•	•	•	•	•
4	7,744	0.178	YELLOW ASPEN DR	•	•	•	•	•	•	•	•	•	•	•	•	•	•	•	•	•	•	•	•	•	•	•	•	•	•
5	7,879	0.181	YELLOW ASPEN DR	•	•	•	•	•	•	•	•	•	•	•	•	•	•	•	•	•	•	•	•	•	•	•	•	•	•
6	8,278	0.190	YELLOW ASPEN DR	•	•	•	•	•	•	•	•	•	•	•	•	•	•	•	•	•	•	•	•	•	•	•	•	•	•
7	7,514	0.172	YELLOW ASPEN DR	•	•	•	•	•	•	•	•	•	•	•	•	•	•	•	•	•	•	•	•	•	•	•	•	•	•
8	7,500	0.172	YELLOW ASPEN DR	•	•	•	•	•	•	•	•	•	•	•	•	•	•	•	•	•	•	•	•	•	•	•	•	•	•
9	7,500	0.172	YELLOW ASPEN DR	•	•	•	•	•	•	•	•	•	•	•	•	•	•	•	•	•	•	•	•	•	•	•	•	•	•
10	8,125	0.187	YELLOW ASPEN DR	•	•	•	•	•	•	•	•	•	•	•	•	•	•	•	•	•	•	•	•	•	•	•	•	•	•
11	8,125	0.187	YELLOW ASPEN DR	•	•	•	•	•	•	•	•	•	•	•	•	•	•	•	•	•	•	•	•	•	•	•	•	•	•
12	8,125	0.187	YELLOW ASPEN DR	•	•	•	•	•	•	•	•	•	•	•	•	•	•	•	•	•	•	•	•	•	•	•	•	•	•
13	8,125	0.187	YELLOW ASPEN DR	•	•	•	•	•	•	•	•	•	•	•	•	•	•	•	•	•	•	•	•	•	•	•	•	•	•
14	8,125	0.187	YELLOW ASPEN DR	•	•	•	•	•	•	•	•	•	•	•	•	•	•	•	•	•	•	•	•	•	•	•	•	•	•
15	8,125	0.187	YELLOW ASPEN DR	•	•	•	•	•	•	•	•	•	•	•	•	•	•	•	•	•	•	•	•	•	•	•	•	•	•
16	8,907	0.204	NARROWLEAF PL	•	•	•	•	•	•	•	•	•	•	•	•	•	•	•	•	•	•	•	•	•	•	•	•	•	•
17	7,500	0.172	NARROWLEAF PL	•	•	•	•	•	•	•	•	•	•	•	•	•	•	•	•	•	•	•	•	•	•	•	•	•	•
18	7,500	0.172	NARROWLEAF PL	•	•	•	•	•	•	•	•	•	•	•	•	•	•	•	•	•	•	•	•	•	•	•	•	•	•
19	9,612	0.221	NARROWLEAF PL	•	•	•	•	•	•	•	•	•	•	•	•	•	•	•	•	•	•	•	•	•	•	•	•	•	•
20	10,282	0.236	NARROWLEAF PL	•	•	•	•	•	•	•	•	•	•	•	•	•	•	•	•	•	•	•	•	•	•	•	•	•	•
21	8,815	0.202	NARROWLEAF PL	•	•	•	•	•	•	•	•	•	•	•	•	•	•	•	•	•	•	•	•	•	•	•	•	•	•
22	11,293	0.259	NARROWLEAF PL	•	•	•	•	•	•	•	•	•	•	•	•	•	•	•	•	•	•	•	•	•	•	•	•	•	•
23	10,263	0.236	NARROWLEAF PL	•	•	•	•	•	•	•	•	•	•	•	•	•	•	•	•	•	•	•	•	•	•	•	•	•	•
24	12,539	0.288	NARROWLEAF PL	•	•	•	•	•	•	•	•	•	•	•	•	•	•	•	•	•	•	•	•	•	•	•	•	•	•
25	8,175	0.188	BOX ELDER WAY	•	•	•	•	•	•	•	•	•	•	•	•	•	•	•	•	•	•	•	•	•	•	•	•	•	•
26	7,858	0.190	BOX ELDER WAY	•	•	•	•	•	•	•	•	•	•	•	•	•	•	•	•	•	•	•	•	•	•	•	•	•	•
27	9,249	0.212	BOX ELDER WAY	•	•	•	•	•	•	•	•	•	•	•	•	•	•	•	•	•	•	•	•	•	•	•	•	•	•
28	10,798	0.248	BOX ELDER WAY	•	•	•	•	•	•	•	•	•	•	•	•	•	•	•	•	•	•	•	•	•	•	•	•	•	•
29	10,358	0.238	BOX ELDER WAY	•	•	•	•	•	•	•	•	•	•	•	•	•	•	•	•	•	•	•	•	•	•	•	•	•	•
30	9,815	0.225	BOX ELDER WAY	•	•	•	•	•	•	•	•	•	•	•	•	•	•	•	•	•	•	•	•	•	•	•	•	•	•
31	8,081	0.186	BOX ELDER WAY	•	•	•	•	•	•	•	•	•	•	•	•	•	•	•	•	•	•	•	•	•	•	•	•	•	•
32	7,860	0.180	BOX ELDER WAY	•	•	•	•	•	•	•	•	•	•	•	•	•	•	•	•	•	•	•	•	•	•	•	•	•	•
33	8,288	0.190	BOX ELDER WAY	•	•	•	•	•	•	•	•	•	•	•	•	•	•	•	•	•	•	•	•	•	•	•	•	•	•
34	7,938	0.182	BLUE PINE WAY	•	•	•	•	•	•	•	•	•	•	•	•	•	•	•	•	•	•	•	•	•	•	•	•	•	•
35	7,533	0.173	BLUE PINE WAY	•	•	•	•	•	•	•	•	•	•	•	•	•	•	•	•	•	•	•	•	•	•	•	•	•	•
36	7,533	0.173	BLUE PINE WAY	•	•	•	•	•	•	•	•	•	•	•	•	•	•	•	•	•	•	•	•	•	•	•	•	•	•
37	7,533	0.173	BLUE PINE WAY	•	•	•	•	•	•	•	•	•	•	•	•	•	•	•	•	•	•	•	•	•	•	•	•	•	•
38	7,533	0.173	BLUE PINE WAY	•	•	•	•	•	•	•	•	•	•	•	•	•	•	•	•	•	•	•	•	•	•	•	•	•	•
39	7,533	0.173	BLUE PINE WAY	•	•	•	•	•	•	•	•	•	•	•	•	•	•	•	•	•	•	•	•	•	•	•	•	•	•
40	13,842	0.318	BLUE PINE WAY	•	•	•	•	•	•	•	•	•	•	•	•	•	•	•	•	•	•	•	•	•	•	•	•	•	•
41	18,692	0.429	BLUE PINE WAY	•	•	•	•	•	•	•	•	•	•	•	•	•	•	•	•	•	•	•	•	•	•	•	•	•	•
42	12,462	0.286	BLUE PINE WAY	•	•	•	•	•	•	•	•	•	•	•	•	•	•	•	•	•	•	•	•	•	•	•	•	•	•
43	13,510	0.310	BLUE PINE WAY	•	•	•	•	•	•	•	•	•	•	•	•	•	•	•	•	•	•	•	•	•	•	•	•	•	•
44	9,916	0.228	BLUE PINE WAY	•	•	•	•	•	•	•	•	•	•	•	•	•	•	•	•	•	•	•	•	•	•	•	•	•	•
45	7,533	0.173	BLUE PINE WAY	•	•	•	•	•	•	•	•	•	•	•	•	•	•	•	•	•	•	•	•	•	•	•	•	•	•
46	7,533	0.173	BLUE PINE WAY	•	•	•	•	•	•	•	•	•	•	•	•	•	•	•	•	•	•	•	•	•	•	•	•	•	•
47	7,533	0.173	BLUE PINE WAY	•	•	•	•	•	•	•	•	•	•	•	•	•	•	•	•	•	•	•	•	•	•	•	•	•	•
48	7,533	0.173	BLUE PINE WAY	•	•	•	•	•	•	•	•	•	•	•	•	•	•	•	•	•	•	•	•	•	•	•	•	•	•
49	7,533	0.173	BLUE PINE WAY	•	•	•	•	•	•	•	•	•	•	•	•	•	•	•	•	•	•	•	•	•	•	•	•	•	•
50	7,938	0.182	BLUE PINE WAY	•	•	•	•	•	•	•	•	•	•	•	•	•	•	•	•	•	•	•	•	•	•	•	•	•	•
51	13,164	0.302	YELLOW ASPEN DR	•	•	•	•	•	•	•	•	•	•	•	•	•	•	•	•	•	•	•	•	•	•	•	•	•	•
52	11,859	0.288	YELLOW ASPEN DR	•	•	•	•	•	•	•	•	•	•	•	•	•	•	•	•	•	•	•	•	•	•	•	•	•	•
53	11,129	0.255	YELLOW ASPEN DR	•	•	•	•	•	•	•	•	•	•	•	•	•	•	•	•	•	•	•	•	•	•	•	•	•	•

• Indicates all home options that can be located on lot
 1 Indicates Home Addition -or- 3 Car Garage, not both can be selected
 2 Indicates Home will have modifications to the standard configuration



The Grove Community Plan

Explore our interactive Lots Map on the website to see which lots are currently available, homes that fit on a specific lot, and lots that have been sold.





a simplified process to
your custom home

contact us

We are thrilled to hear you're interested in building and buying a home at The Grove. Contact our team today to hear more about current homes and lots available.

970.765.7579

info@thegrovetmontrose.com

1414 Hawk Parkway Unit B
Montrose, CO 81401

showroom material browsing hours
by appointment only

