

When Internet of Things meets Metaverse: Convergence of Physical and Cyber Worlds

Kai Li, *Senior Member, IEEE*, Yingping Cui, *Student Member, IEEE*, Weicai Li, *Student Member, IEEE*, Tiejun Lv, *Senior Member, IEEE*, Xin Yuan, *Member, IEEE*, Shenghong Li, *Member, IEEE*, Wei Ni, *Senior Member, IEEE*, Meryem Simsek, *Senior Member, IEEE*, and Falko Dressler, *Fellow, IEEE*

Abstract—In recent years, the Internet of Things (IoT) has been studied in the context of the Metaverse to provide users with immersive cyber-virtual experiences in mixed-reality environments. This survey introduces six typical IoT applications in the Metaverse, including collaborative healthcare, education, smart city, entertainment, real estate, and socialization. In the IoT-inspired Metaverse, we also comprehensively survey four pillar technologies that enable augmented reality (AR) and virtual reality (VR), namely, responsible artificial intelligence (AI), high-speed data communications, cost-effective mobile edge computing (MEC), and digital twins. According to the physical-world demands, we outline the current industrial efforts and seven key requirements for building the IoT-inspired Metaverse: immersion, variety, economy, civility, interactivity, authenticity, and independence. In addition, this survey describes the open issues in the IoT-inspired Metaverse, which need to be addressed to eventually achieve the convergence of physical and cyber worlds.

Index Terms—Metaverse, augmented reality, virtual reality, IoT, responsible artificial intelligence, data communications, mobile edge computing, digital twins

I. INTRODUCTION

A. IoT applications in Metaverse

Metaverse aims to enable an integrated network of 3D virtual and physical worlds, where a single and universal Internet is extended to provide users immersive cyber-virtual experiences in physical worlds. In particular, two popular applications, i.e., augmented reality (AR) and virtual reality (VR), are developed to bring connected immersive digital experiences and social connections to the Metaverse's users. According to Consumer Technology Association's reports,

K. Li is with CISTER Research Centre, Porto 4249-015, Portugal, and also with CyLab Security and Privacy Institute, Carnegie Mellon University, Pittsburgh, PA 15213, USA (E-mail: kaili@ieee.org).

Y. Cui, W. Li, and T. Lv are with the School of Information and Communication Engineering, Beijing University of Posts and Telecommunications, Beijing 100876, China (E-mail: {cuiyingping, liweicai, lvtiejun}@bupt.edu.cn).

X. Yuan, S. Li, and W. Ni are with the Digital Productivity and Services Flagship, Commonwealth Scientific and Industrial Research Organization (CSIRO), Sydney, NSW 2122, Australia (E-mail: {xin.yuan, shenghong.li, wei.ni}@data61.csiro.au).

M. Simsek is with VMware, Inc., Palo Alto, CA 94304, USA (E-mail: msimsek@vmware.com).

F. Dressler is with the School of Electrical Engineering and Computer Science, TU Berlin, Berlin 10587, Germany (E-mail: dressler@ccs-labs.org).

Copyright (c) 20xx IEEE. Personal use of this material is permitted. However, permission to use this material for any other purposes must be obtained from the IEEE by sending a request to permissions@ieee.org.

AR/VR in the digital health care market is estimated to grow from \$960 million in 2019 to \$7 billion in 2026 due to the COVID-19 pandemic [1]. A comprehensive research report by Market Research Future shows that AR/VR in the education market can grow at an 18.2% compound annual growth rate in the next five years [2].

To support wireless and seamlessly connected immersive digital experiences, the Internet of Things (IoT) can be leveraged in the Metaverse [3], which maps real-time IoT data from real life into a digital reality in the virtual world. The IoT can supplement the experiential interface of the users into the virtual world created by AR/VR [4]. Take the health awareness application as an example. The medical IoT devices can be attached to the user's body or a sensor-laden body suit to instrument the user's state, such as the health conditions that might elicit a response in the virtual realm [5]. The IoT can also help improve e-commerce experiences of the virtual fitting room, where the IoT devices are used to track the movement of the user's body. The personal body information could be updated through data from photos taken on the user's smartphone or smart weighing scales, for instance. This allows the users in the Metaverse to fully immerse in a virtual representation of the store, which overcomes the experiencing barriers of traditional online shopping. In addition, the IoT data can be utilized by the recent Tactile Internet that builds a network or network of networks for remotely accessing or controlling real or virtual objects in real-time by humans or machines [6], [7]. The IoT data can provide context and situational awareness of physical things to AR/VR applications while triggering data exchange between the digital and physical worlds [8]. For instance, an AR device can react to the user's finger gestures, or trigger a cyber-physical function driven by an event occurring in the physical world.

The IoT-assisted interaction between real life and the virtual world helps create a digital twin, a digital reflection of the physical state and condition of a unique physical thing [9]. To achieve a practical digital twin, the Metaverse aims to ensure the reflection is as close to the real-time physical state as possible. Due to this distinct feature, digital twins grow as one of the fundamental applications in the Metaverse. In professional settings, digital twins can be constructed with the Tactile Internet as well as the Haptic Codecs (IEEE P1918.1.1) [10] to make a group meeting productive since the users can interact with each other while

operating or demonstrating a replica of the hardware or software prototype. In technical training programs, digital twins help engineers directly operate 3D representations of complex systems [11]. The digital twins can also recreate a complete maintenance workshop with a virtual copy of serviced devices and some mechanical tools for repairing the device. The digital twins set up a virtual environment connected with a real workshop in the physical world, where maintenance can be carried out remotely. In urban planning and construction, the digital twins can virtualize a real-world city, where citizens or economic players can use visual representation to implement a development plan and discover future urban projects [12].

The Metaverse can be applied to several transaction scenarios in the digital economy application while achieving a high-efficiency trade. Essentially, Figure 1 introduces the typical 6 application scenarios of the Metaverse, including collaborative healthcare [13], education [14], smart city [15], entertainment [16], real estate [17], and socialization [18].

Healthcare: We are hurtling into the age of the Metaverse. The World Economic Forum has predicted that the introduction of digital services is expected to be one of the most critical factors in transforming healthcare over the next decade [13]. Traditional healthcare is a hands-on personal encounter where doctors and patients meet face-to-face for diagnosis and treatment. The Covid-19 pandemic [19] has forced people to look for alternatives that enable patients to be managed out of the hospital remotely. Before the pandemic, 43% of healthcare facilities could provide telehealth, which rose to 95% in 2020 [20]. The Metaverse promises to facilitate the development of telehealth, the patients can immerse themselves in the Metaverse through their avatar to have a health consultation with their doctors [21]–[25].

The Metaverse can help people with disabilities or limited mobility live better. For example, people with hearing or visual weakness can benefit from the Metaverse technology (e.g., AR or VR) to communicate better; people with paraplegia can enjoy a healthy life in the Metaverse. In addition, AR becomes a promising application to empower skills and knowledge-based medical students. For instance, many technology companies, such as Microsoft HoloLens [26], are developing surgical assistive tools for on-demand surgical operations. Moreover, the Metaverse can help with psychotherapy [18]. A virtual and relaxing environment can be constructed through the Metaverse in which people with mental disorders can communicate and interact with avatars.

Education: In recent years, the Metaverse technologies in the education sector have gained significant momentum [14]. AR/VR that emphasizes visualization-based learning concepts is widely used to transform traditional teaching approaches [27]. For creating engaging and immersive learning environments for students, the Metaverse is expected to extend a variety of learning institutions, which can visualize the teaching content and promote understanding of the learning content. The Metaverse can

also create virtual, safe, but immersive lab environments. Moreover, some learning materials are difficult to observe directly or explain in text [28], e.g., the human body's structure and functions of an organ system, or the universe. To enhance the understandability of the learning materials, AR/VR can be developed to effectively assist the students with the required constant practice and experience. For example, Curiscope, an AR company based in Brno, Czech Republic, developed Virtuali-Tee, an AR-enabled T-shirt [29]. Virtuali-Tee allows the students to visualize and examine the inside of the human body as if they were in an anatomy lab.

Smart city: As a supporting technology in the Metaverse, IoT-empowered digital twins can utilize the IoT data to digitize the objects in the physical world, such as roads and streets, houses, vehicles, and city infrastructures, and create virtual cities. This is a useful tool for building smart cities [15]. With the digital twins, developers and constructors can easily build a simulation environment that comprehensively mirrors the physical world. The digital twins can capture the elements of the smart city, such as people, vehicles, traffic lights, and buildings. The IoT data helps map the physical world to form a visible, controllable, and manageable digital twin city. Essentially, the Metaverse is used in the smart city to optimize the allocation of facilities and resources. For example, Intel and Siemens in Germany collaboratively develop a smart parking solution, where the digital twins-assisted meta-boundary platform is used to manage the local road traffic [30].

Entertainment: The development of Metaverse-related technologies has greatly improved the immersion of games, which can effectively enhance user experience, playability, and fun. A representative Metaverse game is Roblox relying mainly on VR technology, which has 150 million monthly active users [31]. Along with the widespread use of payments and personal information in the Metaverse, a game based on blockchain technology has been proposed in [32]. The Metaverse also provides an immersive environment and can be used for large events such as exhibitions, concerts and book signings. For example, the Korean pop artists Asepa and Black Pink released new songs and held fan signings in the virtual world built by the Metaverse [16].

Real estate: This has been listed as the next promising application entry in the Metaverse [17]. As one of the key technologies driving the Metaverse, AR/VR provides customers with a realistic and immersive experience [33]. For example, real estate agents can harness the power of VR to provide buyers with an immersive virtual tour of a property. This offers the customer the advantage of conducting inspections in all conditions and reduces the time spent out of the house to zero.

Additionally, with the help of AR/VR and AI technology, the Metaverse has a strong potential to deploy in the interior design and architectural fields since it can provide an immersive virtual world and enable real-time interaction [34]. We can not only experience the full spherical panoramic view of the interior and exterior of the house, but also directly change the furniture and internal architectures, and

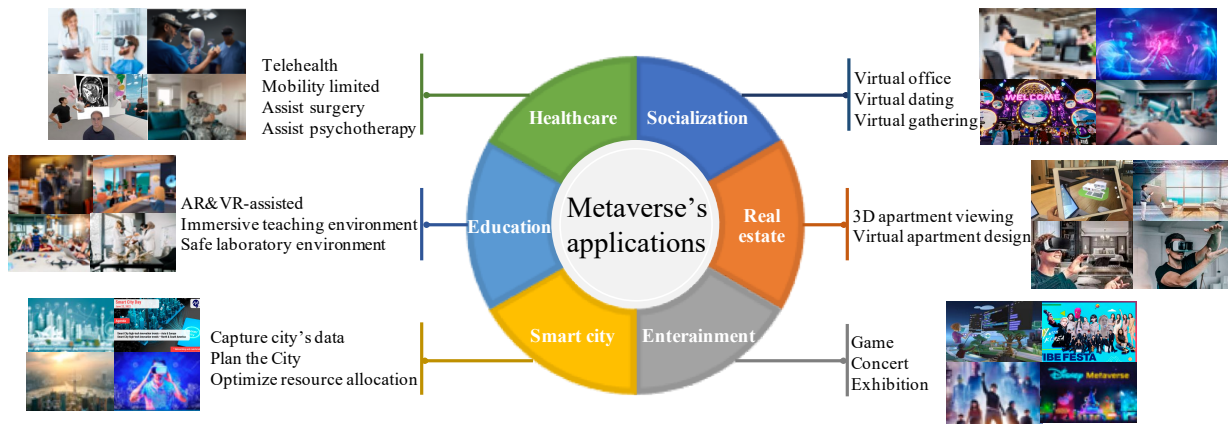


Fig. 1: The six typical applications of the Metaverse include healthcare, education, smart city, entertainment, real estate, and socialization.

see our dream home in real-time. For example, Beike offers a virtual renovation platform [35] where customers can see what they imagine their renovated home will look like, which helps consumers see the potential of the house. Urbanbase has developed “AR Scale”, a 3D cloud-based augmented reality presentation service [36]. Architectural professionals do not need to create real models to show others actual building design solutions. Instead, they display 3D models on the actual building site through AR scale using a 1:1 scale model to check harmony in advance with the surrounding environment and buildings.

Socialization: The Metaverse opens a new application field in terms of human social forms [18]. The Metaverse breaks the boundaries of time and space, which can provide various forms of social interaction, bringing people closer to each other [37]. People can pursue some higher-level needs beyond the level of the physical world, such as virtual offices, virtual dating, and virtual gatherings. With the impact of the COVID-19 pandemic, the importance of telecommuting and remote social networking has become apparent [38]. The Metaverse can compensate for the limitations of traditional models and further improve the functionality of telecommuting and remote social platforms to create a more authentic social environment.

B. Key contributions of this survey

To achieve a convergence of physical and cyber worlds, the IoT-inspired Metaverse has to be constructed to meet four basic requirements, namely, trust and usability, low-latency data transmission, imperceptible response times for the data, and combining digital replicas with physical products and services. In this paper, we comprehensively survey four pillar technologies with their typical applications in the IoT-empowered Metaverse, namely, responsible artificial intelligence (AI), high-speed data communications, cost-effective mobile edge computing (MEC), and digital twins. The four pillar technologies are essential cornerstones for supporting the mainstream services and applications nowadays in the IoT-inspired Metaverse, e.g., connected AR/VR, 3D reconstruction, digital manufacturing, immersive gam-

ing and teaching, etc. Moreover, the four pillar technologies guarantee that the users in the Metaverse satisfy virtual presence and immersing cyber-virtual experiences in a remote environment.

According to [39]–[46], responsible AI provides explainability for designing and developing educational AI tools, flood monitoring solution in smart cities, improving the control and trust of video on demand (VoD) platforms, analyzing real estate market fundamentals, or improving the effectiveness of social media marketing initiatives with the users. High-speed data communication greatly boosts the development of the six typical IoT applications in the Metaverse. For example, the 6G technology can support patients with economic remote services with healthcare professionals in their daily activities [47]. The high-speed data communication enables AI to be used for virtual education in a studying-friendly environment [48]. The 6G network also provides fast data access and data-sharing services in smart cities [49], consumer electronics [50], digital buildings [51], and vehicular social networks [52], to enhance the quality of life for citizens. The cost-effective MEC enables fast remote connection and resource optimization for health monitoring in pervasive healthcare networks [53], teaching/learning activity process in smart classrooms [54], data traffic and congestion management in smart cities [55], improving cloud gaming experience with short delay [56], designing energy monitoring systems in smart homes [57], or maximizing social welfare of live video streaming services [58]. Moreover, the digital twins that leverage the IoT devices and network structure have a broad application scope regarding the six typical scenarios, for example, creating a virtual representation of the healthcare sector [59], tracking student-centered gaze patterns without instrumenting the student [60], improving smart city construction and urban management [61], virtual tours and online shopping [62], urban planning and city administration [63], and social digital twins with virtual-real interactions [64].

Since building the Metaverse is highly complex, the learning process is turned into what is commonly referred

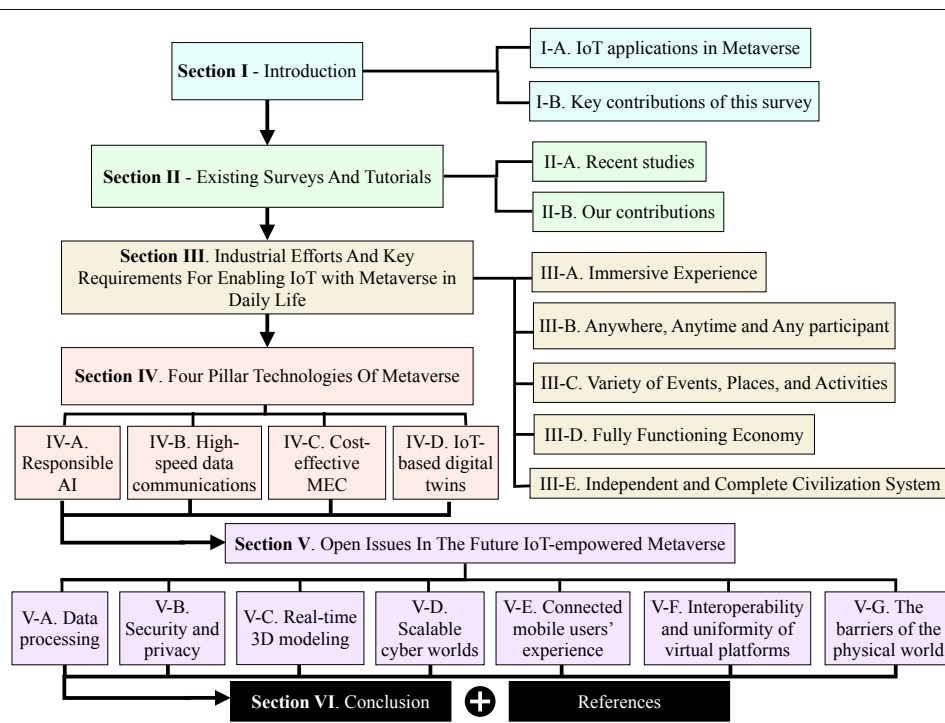


Fig. 2: The roadmap shows the structure of this survey.

to as a “black box”, which is difficult to interpret. The responsible AI can be applied to perceive how the IoT functions in the Metaverse. Specifically, responsible AI is a technique that helps engineers or data scientists who develop AI algorithms explain what is exactly happening inside the IoT applications and how the AI algorithm leads to a specific result in the Metaverse. Therefore, the AI decision-making processes can be fully understood according to the ethical, moral, legal, cultural, and socio-economic consequences in the Metaverse.

Providing the connected AR/VR immersive experiences in the Metaverse relies on enormous amounts of data exchange with ultra-low latency, where the nature of haptic signals and human perception requires 1 ms of latency at maximum. Since the bandwidth of 4G-based wireless networks is scarce, the majority of 4G-based AR/VR applications cannot undertake real-time data communication with a large number of IoT devices. For example, LTE wireless systems can only allow a latency of 25 ms at the minimum [65]. Therefore, lots of research focuses on IoT networks with ultra-high-speed data communications for the AR/VR experience.

Keeping the Metaverse’s users engaged and immersive is important to provide the same experiences as reality. Essentially, the latency of the IoT device has to be maintained lower than the human perceptible limit. To reduce the latency, the Metaverse applies MEC as a support, where MEC allows the IoT devices to utilize the nearby communication infrastructures and computing resources [66]–[70]. By exploiting the MEC, the Metaverse can offer ultra-low-latency immersive experiences to satisfy the human perceptible limit, while powering the virtual 3D realm and

IoT networks. MEC can also enable the Metaverse cross-cloud computing that creates an open environment across multi-vendor cloud platforms [71], [72]. This benefits the Metaverse’s users with on-demand scalability and enhanced service quality.

As one of the Metaverse’s core building blocks, the digital twins create digital replicas corresponding to products and services in the physical world. The digital twins can also visualize data analysis and allow business organizations to carry out simulations based on the physical world’s conditions before making costly decisions [73]–[75]. Implementing the digital twins requires IoT applications to incorporate low-latency data collection [76], precise data modeling, and fusion of heterogeneous sensory data [77], which is challenging. Moreover, the implementation is throughout the product development life cycle, from designing to post-production monitoring and service, to improve product productivity and profitability. With the connection of sensing networks and two-way flow of information [78], [79], this technology reflects any changes in the physical world to synchronize the digital environment and the physical world. The digital twins are interdependent computer programs that integrate the IoT [80], [81], AI [82], [83] and semantic communication [84], [85] to create simulations and predictions of the performance of products or processes.

Digital twins, which include replicas of building facilities [86], operational processes [73], [78], [83], human-computer interaction processes [87], and social services such as healthcare [81] and education [88], provide an entry point for the Metaverse to connect to the physical world. By deploying a collection of digital twins, the Metaverse

infrastructure is enhanced, and all the potential Metaverse applications are easier to be driven into reality.

Figure 2 shows a roadmap that visualizes the structure of this survey. The rest of this survey is organized as follows. In Section II, we discuss the existing surveys and tutorials on the Metaverse. Section III describes current industrial efforts and the key requirements for enabling IoT with the Metaverse in daily life. In Section IV, we investigate the four pillar technologies that support the fundamental applications of the Metaverse: responsible AI, high-speed data communications, cost-effective mobile edge computing, and IoT-empowered digital twins. In Section V, we outline the open scopes and remaining challenges of applying the four pillar technologies to the AR/VR applications in the Metaverse. Finally, Section VI concludes the survey.

Studies were identified by searching databases, including IEEE Xplore, Web of Science Core Collection, and Elsevier. The additional literature was collected from grey literature, including Scopus conference articles and google scholar. No publication date or publication status restrictions were imposed.

The searching keywords are comprised of four pillar technologies supporting the IoT applications in the Metaverse: (1) Responsible artificial intelligence (AI); (2) High-speed data communication, such as millimeter wave (mmWave), non-orthogonal multiple access (NOMA), massive multiple-input and multiple-output (MIMO), terahertz (THz), WiFi 6/6E/7, Time Sensitive Networking (TSN) and semantic-based machine-to-machine communication; (3) Mobile edge computing (MEC); and (4) Digital twins. Based on these keywords, we use boolean (AND, OR, NOT) combination searching to broaden or narrow the searches.

After finishing searching all related studies, we screened titles and abstracts. We examined them by the inclusion criteria, which should apply the pillar technologies supporting the IoT applications in the Metaverse. Followed by assessing the quality of all the screened studies, sorting and summarizing the key technology related to Metaverse.

II. EXISTING SURVEYS AND TUTORIALS

In this section, we review some recent studies on the applications of AI, MEC, and virtual systems in the Metaverse.

A. Recent studies

The Metaverse, integrating social activities and AI methods, incubates service demands from mobile-based always-on access to connectivity with reality using virtual currency. A tutorial in [89] presents a Metaverse taxonomy, which classifies the technologies based on hardware, software, contents, user interaction, implementations, and applications. The taxonomy is applied to three case studies on Ready Player One, Roblox, and Facebook Research, where the social influence and technical limitations of the Metaverse are discussed. The authors in [18] survey the Metaverse's development in terms of network infrastructure,

resource management, connected VR, and its convergence. Three characteristics of the Metaverse are introduced, namely, multi-technology dominance (including AR and blockchain-based economic systems), sociality (including cultural and legal systems), and hyperspace (which breaks the boundary between the virtual world and the real world). A digital twins-native continuum is presented in [90], which summarizes the development of the Metaverse as three steps, i.e., digital twins of humans and IoT, native content creation, and integration of the physical and virtual worlds. Several technologies, e.g., AR/VR, human-machine interaction, AI, robotics, blockchain, and MEC, are explored to build the ecosystems in the Metaverse, which can be applied to the application of content creation, data interoperability, social acceptability, and security. The survey [91] focuses on the security and privacy issues of the Metaverse. Similar to [90], the development of the Metaverse contains three steps, including digital twins, native content creation, and the integration of the physical-virtual reality. In an AI-enabled virtual scene, AR/VR devices equipped with IoT sensors can collect brain-wave signals, facial expressions, eye or hand movements, and environmental conditions [101]. Adversaries can invade and control the AR/VR devices to track the users' locations, biometric features, and users' identities, which threatens human safety and critical IoT infrastructures. Current security protection solutions for the Metaverse, e.g., identity and data management, avatar clone, digital footprints, situational awareness, and user-generated content control, are discussed with regard to the application requirement.

In [92], the authors review the AI-based frameworks, e.g., supervised learning, unsupervised learning, and reinforcement learning, as well as their functionality in the Metaverse. Several popular AI techniques, such as natural language processing, computer vision, blockchain, networking, digital twin, and neural interface, are also studied to improve the user's virtual experience in physical applications, such as health monitoring, intelligent transportation, industrial production, and online shopping. In [93], future AI development is outlined at a national level, which can redefine the economic activities, production, and business demand in a country. The authors take China as an example and list the main national AI structures, including National Open Innovation Platforms, National NGAI Development Experimental Zones, and Pilot zones for innovative application of AI. Most of China's information technology companies are involved in the structures to provide AI solutions for online consumer credit services, autonomous driving, clinical workflow, and customizable virtual conversation assistants.

The Metaverse applications, e.g., AR/VR, and head-mounted displays, capture a vast amount of biometrical data, threatening the users' privacy and security. Considering humanity, equality, and diversity, the monitoring tools should be developed to deal with the user's misbehavior in the Metaverse, while the tools also encourage positive behaviors. Thus, the tutorial in [94] envisions that the application design in the Metaverse is guided following three

TABLE I: Existing surveys and tutorials on the Metaverse

Paper	Short description	Key technologies	Applications covered
[89] 2022	A taxonomy aims to classify the AI technologies in the Metaverse	Hardware, software, contents, user interaction, and implementations	Ready Player One, Roblox, and Facebook Research
[18] 2021	The survey about the development status of the Metaverse applications	Network infrastructure, resource management, connected AR/VR, and blockchain	AR/VR, cultural civilization and legal systems, and hyperspace
[90] 2021	A digital twins-native continuum is presented to summarize the development of the Metaverse	AR/VR, human-machine interaction, AI, robotics, blockchain, and MEC	content creation, data interoperability, social acceptability, and security
[91] 2022	A survey of the Metaverse architecture, as well as the security and privacy protection	Digital twins, native content creation, and the integration of the physical-virtual reality	Identity and data management, digital footprints, and content control
[92] 2022	The AI-based frameworks and their functionality are reviewed	Natural language processing, machine vision, blockchain, digital twin, and neural interface	healthcare, manufacturing, smart cities, and gaming
[93] 2020	The AI development is introduced as a national strategy for technological promotion	Advanced driver assistance, deep learning, big data, AI ecosystem	Autonomous driving, IoT, medical industry, everyday consumers
[94] 2022	An overview of the Metaverse development in terms of privacy, governance, and ethics	Sensory-level privacy, social interaction privacy, modular governance and ethics	AR/VR, head-mounted displays, online games, and social networks
[95] 2013	The survey summarizes the four features according to the physical-virtual interaction	Visual immersion, digital sound, activity and interaction identification	Stereoscopic vision, gesture recognition, and virtual world audio environment
[96] 2022	Fusing blockchain and AI for the Metaverse users to enjoy the verifiable services	Data verification and consensus, distributed storage, and smart contract	Digital creation, digital asset, digital market, and digital currency
[97] 2022	Blockchain and AI can be applied to IoT-based healthcare applications	Communication computing infrastructure, decentralized storage and computation	Remote surgery, AR surgery, healthcare facilities, medical therapy
[30] 2022	An integration of 6G-assisted edge AI and the Metaverse	6G, edge AI, network architecture, resource allocation, and blockchain	Immersion education, telecommuting videoconferencing, and production
[98] 2022	The Metaverse towards enabling the development of 6G systems	6G, digital twins, THz communication, digital avatars, and interactive technologies	extended reality, mixed reality remote monitoring applications
[99] 2022	Applications and technologies in the edge-enabled Metaverse	AR/VR, tactile Internet, digital twin, and AI	Avatar, virtual workspace/education, e-commerce, civil services, and logistics
[100] 2022	Three Metaverse's technology enablers: networks, systems, and users	Text-based virtual worlds, 3D virtual worlds, AR/VR on ubiquitous devices	AR glasses, web applications, videoconferencing
This survey 2022	Four pillar technologies that leverage IoT networks for an integration of the physical and cyber world. The challenges and open issues of the future development of the IoT-empowered Metaverse.	Responsible AI, RIS, mmWave, NOMA, FL, edge AI, and IoT with digital twins.	Smart healthcare, industry 4.0, smart agriculture, data visualization, remote education, and social AR.

aspects: privacy, governance, and ethical consideration. The development of virtual worlds in the past decades, from the individual text-based environment to the Metaverse, is presented in [95]. The survey summarizes four features according to the physical and virtual interaction: realism (enhancing the immersed experience for the user), ubiquity (allowing full system access for the existing IoT devices while maintaining the user's virtual identity over different applications), interoperability (enabling the user to have a seamless, uninterrupted virtual experience), and scalability (supporting a large number of users to run the Metaverse applications concurrently).

In [96], [102], the authors present how blockchain and AI can be fused into an economic system composed of digital creation, digital assets, digital market, and digital currency. Due to enhanced traceability and confidentiality of the data, the users in the Metaverse can enjoy immutable and verifiable services, such as cryptocurrency exchanges, and low-latency transactions and authentication. Moreover, blockchain and AI can be applied to IoT-based healthcare applications [97]. The users' medical data are stored at different servers worldwide, where the Metaverse processes

personal data using AI techniques. The decentralized storage and computation can extend the scalability of the services and prevent malicious attacks.

The survey [30] discusses 6G-assisted AI techniques for the real-time interaction of users. The basic architecture of the Metaverse is studied with a physical layer, a virtual layer, and a technical layer. For serving large-scale AI models, three 6G-enabled architectures, i.e., edge cloud-Metaverse, mobile edge cloud-Metaverse, and decentralized Metaverse, are presented to improve resource allocation efficiency and computing capabilities. In [98], the authors present an overview of the Metaverse-based wireless system for the development of 6G. The Metaverse that enables digital twins can be designed to support network operators, mobile service developers or users, or telecom engineers to virtually monitor and analyze their quality of service. A physical-meta architecture is presented, where the physical space contains all the physical devices, and the meta space is used for data processing at the network edge or the remote cloud.

The survey [99] focuses on the edge-based Metaverse, which utilizes next-generation communication architectures

such as semantic communication and real-time physical-virtual synchronization. The solutions in the literature are classified into two groups. The first group of solutions conducts the MEC with resource allocation for resource-constrained devices to access the Metaverse. The second group studies AI solutions to improve computation efficiencies, such as processing time and storage requirements. In [100], three technology enablers for the Metaverse are presented, namely, networks, systems, and users. Implementing the three enablers in the Metaverse application poses the challenges to delay-transparent offloading, system interoperability, and user's perception of the virtual environment.

B. Our Contributions

The existing surveys and tutorials describe the Metaverse structure, AR/VR applications, digital twins, AI, and blockchain technologies, which focus on human-machine interaction to improve the user's virtual experience. The four pillar technologies working with the IoT network in the Metaverse are still unexplored. In contrast, our survey specifically focuses on the IoT-empowered Metaverse, where real-time IoT data are leveraged to map the physical world into a digital reality in the virtual world.

- To achieve a convergence of physical and cyber worlds, the IoT-inspired Metaverse has to be constructed to meet four basic requirements, namely, trust and usability, low-latency data transmission, imperceptible response times for the data, and combining digital replicas with physical products and services. To this end, we provide a fine-grained study of the four pillar technologies for the four requirements, including responsible AI, high-speed data communications, cost-effective MEC, and IoT-empowered digital twins. The four pillar technologies are essential cornerstones for supporting the mainstream services and applications nowadays in the IoT-inspired Metaverse.
- We expatiate development challenges of the future IoT-empowered Metaverse, such as data processing, security and privacy, real-time 3D modeling, scalable cyber worlds, connected mobile users' experience, interoperability and uniformity of virtual platforms, and the barriers of the physical world (details refer to Section V). We also present the open issues of the four pillar technologies in the IoT-empowered Metaverse, in terms of privacy leakage, bandwidth shortage, complex network management, large data, and Metaverse platforms diversity.

III. INDUSTRIAL EFFORTS AND KEY REQUIREMENTS FOR ENABLING IOT WITH METAVERSE IN DAILY LIFE

The Metaverse is a massively scaled, interoperable platform for virtual activities, which spatially merges the physical world with the virtual world, but in perceived real-time [103]. It can provide an experience that spans both the digital and physical worlds, private and public networks/experiences, and open and closed platforms. In

TABLE II: The representative companies and their typical products

Game maker	Roblox (Roblox); Tencent (Roblox Chinese ver.); Meta (Horizon World); Amazon (AMS Cloud Quest); Epic Games (Fortnite); ByteDance (Restart the World).
Live entertainment	Disney (Theme park Metaverse); Avex Business Development and Digital Motion (Virtual Avex Group).
Social platform	ByteDance (Pixsoul, Party Island); Baidu (Land of Hope); Meta (Facebook Horizon).
Office	Microsoft (Mesh for Teams); Accenture (One Accenture Park).
Hardware	Meta (Oculus Quest); Samsung (Gear VR); Google (Google Cardboard); Sony (PSVR2); Lenovo (ThinkReality).
Platform	Nvidia (Omniverse); Sony and Hassilas (Mechaverse).
Algorithm design and optimization	Google (DeepMind team); OpenAI lab; Baidu (Institute of Deep Learning).

the Metaverse, an unlimited number of participants with a sense of individual presence can synchronously and persistently enjoy the same or even beyond reality type of experiences they would in the physical world [90]. Each participant corresponds to an identity of the Metaverse; and can drop into the Metaverse to conduct social and spiritual activities, e.g., healthcare and education [13], office [18], social, trading, creation, and entertainment [96] as needed, and then pop back out to reality. All these event spaces are anticipated to be interoperable, and their data is continuous. The Metaverse will bring a new level of consistency and immersion to today's increasingly popular hybrid event formats.

With the COVID-19 pandemic, people have to stay home for many activities, which has led an increasing number of people to rely on media and technology to inform and thus entertain, educate, and socialize [104]. Consequently, the Metaverse is realized as the next disruptive technology [92] and currently attracting enormous attention from around the world, since it enables novel forms of engrossing telepresence [105].

Many companies are dedicated to launching various metadata software types, covering areas such as gaming, video conferencing, game development, and AI face painting. In Dec. 2021, Meta released the game "Horizon World" [106]. Participants can use virtual reality (VR) headsets to create their own avatars and interact with other participants' avatars in this virtual world. ByteDance is now testing its first Metaverse social app, called "Party Island", which creates a parallel online universe where people can communicate and join events in real-time through avatars. In addition, some companies work on hardware and operating systems related to the Metaverse, with VR, AR, and AI the most, and the application scenarios are mostly about games and social [107]. There are also companies laying

out Metaverse-related technologies in other areas. For example, Lenovo proposed the concept of “HoloBoard” [108], an immersive future blackboard that uses holographic projection to create a more immersive teaching classroom. Moreover, some companies have started to make efforts in building and optimize the corresponding technologies, including the underlying architecture of the Metaverse (Amazon and Roblox) [91], [109], compute capability, and algorithm optimization (Google, Baidu, and Microsoft) [110]–[112]. The representative companies and their products in the area of Metaverse are shown in Table II.

The IoT-empowered Metaverse has seven key requirements, which are an immersive experience, 3A (Anywhere, Anytime and Any participant), variety, fully functioning economy, civilization system, interactivity, authenticity and independence, as listed in Table III. Those seven key requirements are detailedly described in the following subsections, from III-A to III-G. Accordingly, those requirements demand further development of IoT technologies.

A. Immersive Experience

For the participants to experience the Metaverse as they would experience the physical world, the nature of high immersion is essential to the Metaverse [113]. The Metaverse can be experienced synchronously and persistently by an unlimited number of participants with an individual sense of presence and with continuity of data, such as identity, entitlements, objects, history, communications, and payments [114]. Events of any size can be hosted in the Metaverse, such as major trade fairs, exhibitions, etc. Moreover, the Haptic Codecs and Tactile Internet can be developed in the Metaverse to exchange multi-modal data, such as the combination of audio, video and haptic information, over the Internet. This will enable the users to experience an enhanced virtual presence, immersing in a remote environment [115], [116].

B. Anywhere, Anytime and Any participant

The Metaverse is a sustainable, widely covered virtual world, and user access to the Metaverse is not limited by location or time [117]. Anywhere has two main meanings, a) Anywhere in the Metaverse: The Metaverse can model any scenario and guarantee that the participants successfully access the location or scenario they want to visit; b) The participants accessing the Metaverse are not limited by the location: The Metaverse is decentralized, and each participant can access the Metaverse from anywhere with a simple device. Anytime: The participants can access the Metaverse at any time, since time in the Metaverse is continuous. Any participant: There is no limit to the identity and number of concurrent participants in the Metaverse.

C. Variety of Events, Places, and Activities

There will be various events and activities happening in diverse places in the Metaverse at all times. Everyone can be a part of the Metaverse and participate in specific

activities and events together and simultaneously with other participants. To achieve freedom and diversity beyond reality, including a feature that cannot be ignored: User Generated Content [109], the Metaverse should also provide each participant with an individual sense of “presence”.

D. Fully Functioning Economy

Unlike the traditional economy, the Metaverse has an independent and fully functioning creator economy within the system [118]. Participants can create and trade new assets or experiences in the virtual world created by the Metaverse while enjoying full ownership [119]. Creators can use their assets or experiences in the Metaverse and trade them for desired values. Individuals and businesses can create, own, invest in, and sell a wide variety of “works” and be rewarded for the “value” they generate that others recognize.

E. Independent and Complete Civilization System

The Metaverse has its own system of civilization [120]. We have a life in it, a few people may form communities, and communities make up large cities, recognize villages, cities, and even all kinds of rules. Like a social circle, the participants with different languages and cultural backgrounds drive various cultural clusters in the Metaverse. We make the rules in the Metaverse, follow them, and then live here together to evolve into a civilized society. everyone makes common rules and then lives on together in it, evolving into a civilized society.

F. Interactivity

The Metaverse enables seamless connectivity between users and users, between users and platforms, between platforms and platforms, and between operating systems and operating systems, etc [91], [113]. We can create and use assets, avatars, and experiences in any accessible Metaverse without restrictions. In the Metaverse, data, digital items/assets, and content can be interoperable in unprecedented ways. For example, skins of our guns in Counter-Strike can also be used to decorate guns in Crossfire or gifted to friends via Facebook.

G. Authenticity and Independence

There are digital copies of the physical world and creations of the virtual world in the Metaverse [121]. It is a parallel space closely connected to external reality and highly independent. Participants in the Metaverse can not only do what they can do in the physical world but also achieve things that transcend reality in space.

IV. FOUR PILLAR TECHNOLOGIES OF METAVERSE

In this section, we present the four pillar technologies that support fundamental applications of the Metaverse, namely, responsible AI, high-speed data communications, cost-effective mobile edge computing, and IoT-based digital twins.

TABLE III: The typical requirements of the Metaverse and technical demands of IoT

Requirements of the Metaverse	Technical demands of IoT
Immersion (sustainable, synchronous and live)	High synchronization, low latency, huge data monitoring, and real-time computing; Ensure network security, privacy, and trust.
Anywhere, anytime and any participant	The limitation of the network; The barrier of the platforms; Ensure network security, privacy, and trustworthiness; The contradiction between light-weight and computing power, electricity, and diversification; The need of resources to make this virtual world work.
Variety (heterogeneity, diverse events, places and activities)	Ensure interoperability.
Economy (fully functioning and independent creator economy)	High synchronization, low latency, huge data monitoring, and real-time computing; Ensure network security, privacy, and trust.
Civility (diversity, equality, and inclusiveness)	Different languages and civilizations, how to communicate? Can we rely on SemCom? Local semantic knowledge base (Sem-KB) vs. cloud Sem-KB.
Interactivity (seamless connection)	High synchronization, low latency, huge data monitoring and real-time computing; The barrier of the platform; Ensure interoperability.
Authenticity and independence (digital copies of the physical world and parallel space)	The accuracy of introducing the physical world into the Metaverse.

A. Responsible AI

1) *Motivation*: While AR/VR is at the forefront of the Metaverse, AI is an important technology that works behind the scenes to make miracles happen. AI is most useful for data computations and predictions. It can help improve algorithms for tasks such as avatar creation, natural language processing and translation, and world generation. It could also improve how we interact in VR, as AI monitors sensors that measure our bioelectricity and muscle patterns. AI also makes experiences more inclusive by offering services such as image recognition for visually impaired users.

As many AI techniques and applications bloom in the Metaverse, it becomes more and more critical to comprehend and retrace the functioning of the applied AI techniques. This can ensure that the Metaverse is working as expected to meet regulatory standards. Due to the high complexity of the Metaverse's construction, the learning process is turned into what is commonly referred to as a "black box", which is difficult to interpret. For example, deep neural networks are some of the hardest for a human to understand. These black box models are created directly from the data. As a result, data processing in the Metaverse can suffer data biases, resulting from population data, measurement error, data quality chasm, data re-purposing, and data augmentation. Such data biases can jeopardize data quality, fairness, accountability, transparency, and explainability of the Metaverse. Despite a proactive policy that can be used to build trust and transparent AI for fighting against negative social impacts, developing such a policy craves a deep understanding of AI techniques in the Metaverse, where the AI decision-making processes have to be explainable [122], [123].

2) *Significance*: To promote the trust and usability of the Metaverse, responsible AI [124], as shown in Figure 4, is developed to fully understand the AI decision-making processes while considering the ethical, moral,

legal, cultural, and socio-economic consequences in the Metaverse. Moreover, the responsible AI helps the engineers or data scientists who develop AI algorithms explain what is exactly happening inside the IoT applications and how the AI algorithm leads to a specific result [125], [126]. Responsible AI can be applied to various applications, which extends the responsible guidance on the limits of a learning algorithm, and describes the training data involved [127]. In [128], a responsible urbanization framework is studied with the AI system, which aims to balance the benefits, risks, and impacts of developing the city. Responsible AI can consider the effects of machine learning decisions on the natural environment and future urban planning. Accordingly, responsible urban innovation can be characterized by sustainability, which is important for planning long-term urbanization strategies.

3) *Challenges and key technologies*: Multiple challenges need to be addressed to achieve responsible AI: (1) to ensure that AI algorithms do not learn biased or unbiased world views depending on the gaps in the training data, model, and objective function; (2) to determine whether the decision taken by AI systems was fair or not; (3) to determine if AI is reliable or not without evaluating the process of how it reached a conclusion. Several explainable AI-based approaches [129] have been introduced in recent years to strengthen control and oversight in case of adverse or unwanted effects, such as biased decision-making or social discrimination. In [41], deep learning is used to classify drainage and gully images for flood monitoring in smart cities, where the image can be labeled to one of the three blockage tags (No Blockage, Partially Blocked, and Fully Blocked). Explainable AI combines semantic representation to unveil relationships between various objects' coverage within the image, thus improving the explainability of deep learning solutions. To assist product design and marketing, explainable AI can be used to characterize competitors'

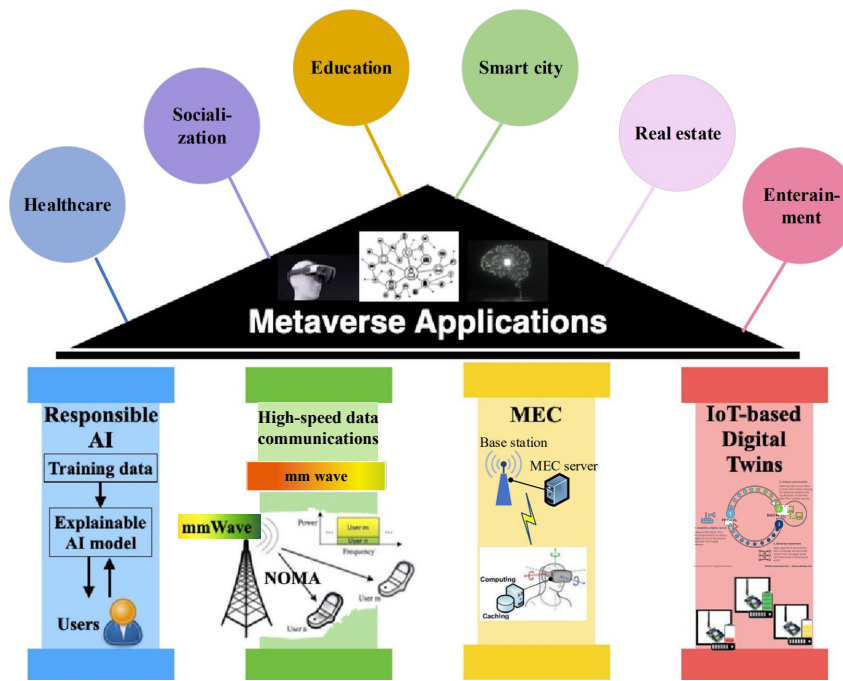


Fig. 3: The four pillar technologies that support the IoT applications in the Metaverse. The responsible AI helps engineers or data scientists explain what exactly is happening inside the AI algorithm; the high-speed data communication empowers real-time connections based on several promising technologies, such as millimeter wave (mmWave), non-orthogonal multiple access (NOMA), massive multiple-input and multiple-output (MIMO), terahertz (THz), and visible light communication (VLC); MEC provides the Metaverse with massive server resources to power the virtual 3D realm, while providing a network of ultra-low latency communications for imperceptible response times; Digital twins can create a virtual replica of physical objects or services, which provides users an immersive experience in the physical world.

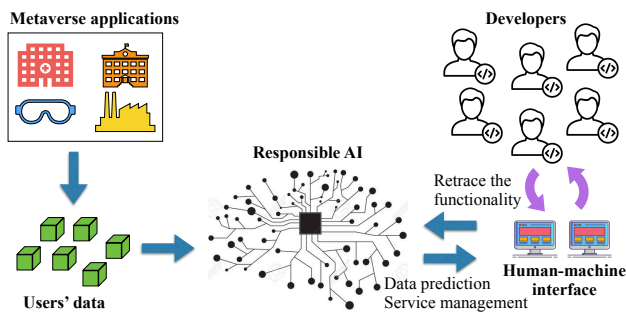


Fig. 4: Responsible AI can enable a full understanding of the AI decision-making processes in the Metaverse.

work and identify potential opportunities to outperform them [130]. Based on customer-generated reviews, explainable AI can extract the competitive factors of the product and effectively reflect customer opinions.

4) *Applications in Metaverse*: Responsible AI has been widely used for building smart health systems in the Metaverse. The capabilities of responsible AI can drive the healthcare market and enable patients to experience a dynamically different service environment [131], [132]. Data sufficiency and integrity, algorithmic design, privacy protection, malfunction correction, and collaborative efforts are critical factors in shaping responsible AI with

the smart health systems in the Metaverse. The authors of [133] develop responsible AI with a patient-centric individualized home-based rehabilitation support system. Synthetic datasets complement experimental observations and mitigate bias. Explainable AI-based algorithms combine ensemble learning and hybrid stacking using extreme gradient-boosted decision trees and k-nearest neighbors to meet individualization, interpretability, and system design requirements. Socially responsible AI [134] is studied to prioritize the data and the users of the Metaverse while eliminating the negative affection of minoritized or disadvantaged users. Based on the users' feedback, socially responsible AI accomplishes the expected social values of the data to maximize the long-term beneficial impact. In [135], explainable AI is extended to recognize early symptoms of cognitive decline, which explains why a specific prediction is generated. The explainable AI-based system is built with clinical indicators describing subtle and overt behavioral anomalies, spatial disorientation, and wandering behaviors. The explainable AI-based system is adaptive to different individuals and situations to recognize anomalies.

Enabling the Metaverse in industry 4.0 often requires hyperparameters optimization, finetuning, computing capability, and continuous training of huge data. The data are typically generated and aggregated from millions of devices [136], [137]. Thus, it is possible that the users'

sensitive data can be falsified due to cyberattacks [138], [139]. Thus, more and more applications in industry 4.0 explore explainable AI with Metaverse to strengthen risk assessment, trustworthy control operation, and automation [42].

Taking advantage of 5G networks, COVID-19 can be detected based on uploaded patients' medical images or blood samples. In [140], deep learning models are trained at the 5G servers to process the medical data, where explainable AI is used to allow doctors to understand the outputs of each layer of the deep learning models. In the explainable AI, multi-modal datasets, such as CT/X-rays images and ultrasounds, as well as protease sequence data, confidence scores, and configuration settings of the deep learning model, are fused to generate a knowledge graph. The knowledge graph is able to reveal the data disruption and the feature adjustment probability. The explanations can also be visualized by a data visualization method, e.g., the gradient-weighted class activation mapping (gradCAM). Explainable AI is promising to quantify the uncertainty of 5G and beyond networks, especially understanding training data and AI algorithms concerning the wireless network performance requirement [141]. Particularly, the data feature visualization of the explainable AI can improve the transparency of AI-enabled network layers, which ensures mission-critical services in 6G networks. Explainable AI motivates interactions between AI-based human-centric systems and high-speed communication networks [142], where explainable AI aims to build trust between end users and AI-based machines in radio and resource allocation as well as network optimization. Since explainable AI is conducted based on the training of huge data, high-speed data communication strengthens enormous amounts of data exchange with ultra-low latency.

5) *Lessons learned and use cases*: Many companies apply ethical frameworks with responsible AI in different sectors to improve their trust with the clients and partners [143]. Responsible AI provides an understanding of the human uncertainties (including biases) over the AI, which allows the Metaverse application to have a sound representation of the whole system environment from the AI perspective. Moreover, it is also critical to standardize responsible AI to reduce the self-claimed implementations gap among the AI platforms resulting from ethical considerations.

Responsible AI can be used for risk assessment in human-sensing IoT systems [144], where human attention states are classified and mapped into four categories, i.e., low, normal, medium, and high risks. Responsible AI is developed to classify abnormal electroencephalogram (EEG) brainwave signals based on the importance of each feature used in the deep learning model. In IoT-based smart agriculture, IoT nodes are deployed in remote farms and sense metrics, such as temperature or humidity. The sensory data is used to adapt irrigation control systems. For precise crop monitoring and automated irrigation, responsible AI can be utilized to produce interpretable data analysis [145], which enables users to inspect the model reasoning in the

irrigation control systems.

B. High-speed data communications

1) *Motivation*: The Metaverse aims to provide massive mobile users the connected AR/VR experiences and real-time services. Providing a networking AR/VR service relies on enormous amounts of data exchange with ultra-low latency, where the nature of haptic signals and human perception requires 1 ms of latency at maximum. However, most 4G technologies cannot supply real-time data communications for multiple mobile users. For example, it is hard to reduce the latency of LTE-based wireless systems below 25 ms [65], [146].

In recent years, 5G is rapidly developed to provide real-time data exchange to IoT devices [147]. The data rate of 5G outperforms 4G-based systems while providing a suitable high-speed communication architecture for the Metaverse. In particular, 5G networks enable several promising technologies, such as mmWave [148]–[150], NOMA [151]–[153], and massive MIMO [154]. Based on the large-scale commercial deployment of 5G networks, 6G is expected to extend personalized communications to fully realize the machine-to-machine paradigm, which connects not just people, but also IoT devices, smart vehicles, wearable sensors, and even mobile robots [155], [156]. These unique additions within high-speed data communications can empower millions of connected devices and ubiquitous AR/VR applications, which allows the Metaverse to benefit from the “anytime-anywhere connectivity” promise of next-generation wireless mobile networks.

2) *Significance*: High-speed data communications can improve the reliability of the services as well as the network capacity and density of the Metaverse. Specifically, 5G can boost the data rate of the IoT device or the mobile user to 100 Mbps in a uniform spatial distribution, while the peak data rate can be 10–20 Gbps [157]. The high data rates support enhanced mobile broadband for personal mobile services and large-scale machine-to-machine communications. Moreover, 5G offers reliability and delay critical services, where the end-to-end latency is maintained as low as one millisecond, and the reliability is as high as 99.99%. Compared with the current 4G techniques, 5G networks provide a 10-time increase in the network throughput, a 10x decrease in communication latency, a 100x enhancement in the traffic capacity, and a 100x growth in network efficiency.

Based on the existing 5G architecture, 6G can be developed to fulfill the ubiquitous application requirements in the Metaverse. For example, providing the enhancement of VR/AR capabilities with the required resources (such as computing power, storage space, graphics processing capabilities, and communication resources) through massive IoT devices [158]. For ultra-high data rate and further reducing communication latency, 6G is studied to utilize more frequency bands than 5G and 4G, such as sub-THz and THz, as well as VLC. Although it is well-known that a high radio frequency can result in an increased data loss,

6G benefits from the shortened data transmission distance to support more low-latency applications in the densely-populated area. To address the issue of limited coverage, 6G also applies high-speed and low-latency machine-to-machine communication techniques and ultra-massive MIMO [159].

3) *Challenges and key technologies*: The challenges associated with high-speed data communication lie in the demand for high mobility, low latency, and high reliability. In particular, the capacities of cellular communication systems are insufficient to accommodate the vast number of AR/VR applications as the number of Metaverse users increases. To support several gigabits-per-second high-speed data rates, the working frequency of the mmWave IoT systems is set between 30 and 300 GHz [160], [161]. Some of the works studied use large-scale antenna arrays for the high-frequency band of the mmWave [162]. The antenna elements can be arranged linearly or in a full-dimensional array (i.e., with both elevation and azimuth angle resolution capabilities). Due to the high carrier frequency, mmWave IoT systems suffer a more severe propagation loss than low-frequency communication technologies, such as LTE. Moreover, it is difficult for the mmWave signal to penetrate and diffract around obstacles, such as vehicles and buildings in urban areas, and molecular (e.g., rain and dust) and atmospheric (e.g., air density) absorption can also prevent mmWave propagation.

Another 5G technology is NOMA which shares non-orthogonal time and frequency resources via power-domain or code-domain multiplexing. The power-domain multiplexing allocates the IoT devices with different transmit power adapting to the time-varying channel quality to achieve a maximized network benefit. Moreover, IoT devices can conduct code-domain multiplexing, which generates different codes that can be multiplexed over the same time-frequency resources. Although the code domain multiplexing may consume more signal bandwidths than power-domain multiplexing, the former can improve spreading gain and shaping gain. NOMA can sustain massive connectivity in the Metaverse, where the number of orthogonal resources available does not restrain the number of IoT devices.

To meet the demand of 100 Gbps data rates and 1-millisecond latency, THz of 6G can be applied to IoT networks that facilitate massive AR/VR service coverage and scalability in the Metaverse. Specifically, the range of THz is from 300 GHz to 3 THz since most of the spectrum beyond 100 GHz is still idle. As new technology develops, THz communication is still facing obstructions. For example, THz signals can be easily attenuated by weather influences, such as raining, snowing, or even water vapor in the atmosphere. Additionally, the propagation loss increases quadratically with the frequency of long-distance communication. This can result in a severe free space path loss in the THz communication; e.g., a 10-meter THz link suffers a 100 dB loss.

Millimeter wave, NOMA, and terahertz communications are typical technologies that enable ultra-low latency and

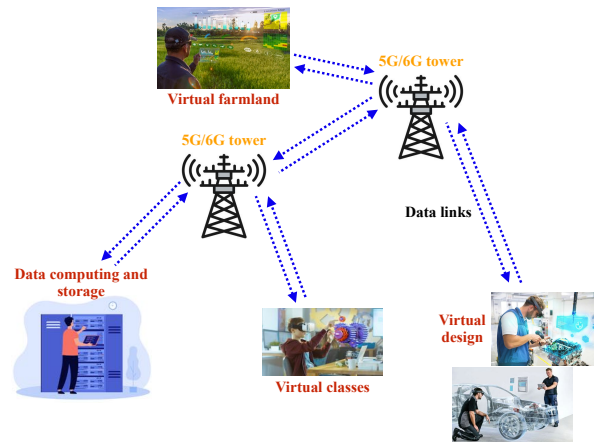


Fig. 5: The high-speed communication technology enables “anytime-anywhere connectivity” for the Metaverse applications, where the AR/VR can be used for virtual design and manufacture, teaching, and farmland monitoring.

ultra-high data rates in fifth-generation (5G) and sixth-generation (6G) networks. They are not limited to 5G/6G cellular networks and can also be used for cell-free networks (a de-cellular architecture) [163], MEC [164], and IoT [165], [166]. There are some other high-speed data communication technologies, such as WiFi 6/6E/7 [167], Time Sensitive Networking (TSN) [168], and semantic-based machine-to-machine communication [169], that can support the Metaverse applications. The Wi-Fi Alliance (WFA) sets the WiFi 6 standard in 2019 to cover low-power IoT nodes and broadband applications [170]. In addition, new standards, WiFi 6E proposed in 2020 [171] and WiFi 7 proposed in 2024 (estimated) [172], will provide 6 GHz in support of higher bandwidth applications, such as the Metaverse. In addition, the bandwidth is increased by at least 1200 MHz, which helps to improve WiFi positioning accuracy [173]. With improved interference and latency, the new 6 GHz spectrum is also expected to be used for high-reliability use cases in the Metaverse.

TSN is a set of IEEE 802.1 standards that can reduce delay and ensure fast data transmission [174]. For wider connectivity and greater network capacity transfer capability, TSN is an eminently suitable technology [175]. New TSN switches support the setup of time-synchronized applications, ensuring that real-time critical data and data-intensive applications in the Metaverse do not interfere with each other over a common Ethernet line. On December 3, 2021, Kyland Technology replied to investors on an interactive platform that their TSN devices achieved support at the end and network device levels and that the full range of TSN products they have developed are available for building the network infrastructure of the Metaverse, where TSN is used as a network technology to provide time-sensitive, high real-time assurance [176].

Semantic-based machine-to-machine communication systems may also contribute to the development of the

Metaverse [177], [178]. The Metaverse needs to use sensors and image acquisition devices to collect a large amount of sensory data from the real world in real-time. If we can filter irrelevant information and extract semantics, such as gestures, voices, actions, and other information from this sensor data, there is a good chance of saving communication resources and reducing delays. Unlike existing communication technologies, transmissions in semantic communications are valid as long as the received information retains the same meaning as the transmitted information.

4) *Applications in Metaverse*: Figure 5 presents the high-speed data communications in the Metaverse, which provides “anytime-anywhere connectivity” for the IoT applications, such as virtual design and manufacture, teaching, and farmland monitoring. Specifically, high-speed data communication allows students to remotely attend virtual classes, where teachers anywhere on the planet vividly demonstrate the content knowledge via the video/audio stream. Virtual classes can moderate student participation, enrich the learning experience, and break down the most common barriers that hinder synchronous learning.

High-speed data communication is predicted to make a massive impact in the Metaverse with the growth of technological advances, making it a much more immersive experience. The high-speed data communication could potentially converge the virtual and physical worlds, which will enable the probable usage of holographic technology for a seamless connection, redefining wearable devices, mobile phones, and their interaction processes, and enhancing AI in the AR/VR applications. For example, an engineer in Germany may, through a holographic presence, operate and monitor a machine in Portugal without leaving his home in Berlin, or a doctor from Australia may heavily assist in a live medical procedure in Hong Kong through high-speed-connected AI technology.

Despite the high-speed data communication, it is also important to facilitate massive service coverage and scalability in the Metaverse, where the response time of the service to user actions should be significantly reduced to levels below the human perceptible limit. To achieve this, MEC can be developed to provide the Metaverse with massive server resources.

5) *Lessons learned and use cases*: The high-speed data communication enables engineers in different industrial manufacturing companies to jointly design their products online. Engineers can utilize IoT data and AR/VR to create a shared virtual 3D model. The Metaverse, which takes advantage of high-speed data communication, brings complementary technologies and industrial design patterns to integrate the physical and cyber worlds. Moreover, the industrial company focusing on hardware design can connect with hundreds of certified partners who provide software support or supply chain solutions. This will eventually lead to a comprehensive platform for virtual 3D design and collaboration with physics-based digital models.

According to Samsung’s 6G white paper [180], Samsung expects that high-speed data communication can benefit

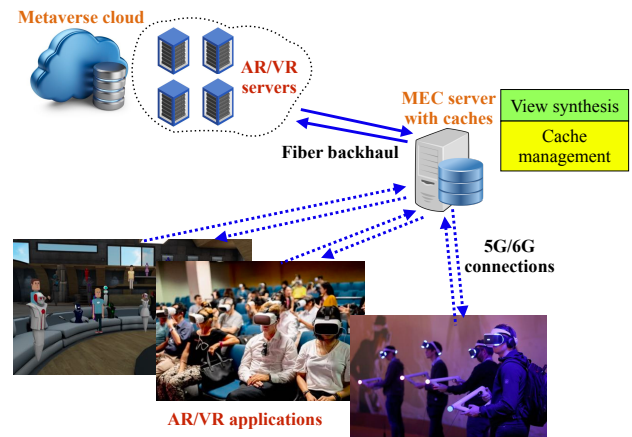


Fig. 6: By caching the video contents at the edge server, MEC offers rapid response time to the computing resource request from the users’ Metaverse application. Particularly, the requested data of the user can be fetched directly from the edge cache/the cloud cache/the AR/VR video source server or synthesized by the MEC server [179].

both IoT devices and users, where a large number of smart vehicles, robots, drones, home appliances, displays, smart sensors installed in various infrastructures will require to work in tandem with evolving mobile devices in the Metaverse. High-speed data communication could resolve the problems faced by high-fidelity AR/VR streaming. For example, streaming AR/VR to an 8K display currently needs 55.3 Mbps of speed [181], but an immersive experience requires 0.44 Gbps at least. Moreover, 16K AR/VR streaming will need a speed of 0.9 GBps, which cannot be achieved by the current 5G technology. Thus, 6G is expected to help deliver 3D hologram relays.

C. Cost-effective Mobile Edge Computing

1) *Motivation*: It is critical to maintain user engagement and immersion in the Metaverse to provide the same level of experience as in reality. In this regard, the response time to user actions should be significantly reduced to levels below the human perceptible limit.

Mobile Edge Computing (MEC) is an emerging technology that provides fast response times by hosting a combination of communications infrastructure and computing resources close to the users. As shown in Figure 6, MEC extends a network and software platform environment that can seamlessly approach or even exceed the limits of human perception of response time. The dynamic and immersive experience requirements of the Metaverse can be achieved by adopting MEC. MEC can provide the Metaverse with massive server resources to power the virtual 3D realm while providing a network of ultra-low latency communications for imperceptible response times.

2) *Significance*: As 5G (expected to reduce last-mile latency to 1ms) and future 6G flourish, MEC is a promising technology for the Metaverse. It can provide single-hop edge offloading services from cellular-connected user

devices to enhance user experience in the Metaverse, such as AR glasses. MEC is also essential for outdoor Metaverse services to understand the detailed local environment and coordinate close collaboration between nearby users or devices. For example, 5G MEC servers can manage AR content for nearby users via single-hop packet transmission and enable real-time user interactions for social AR applications, e.g., “Pokémon GO” [182].

3) *Challenges and key technologies*: The following challenges need to be addressed for the successful deployment of MEC:

- **Openness of Network**: An open network provides the necessary trust to users and service providers. However, it is difficult to achieve due to the commercial conflict of interest between service providers and equipment vendors.
- **Diversified Ecosystem**: Building a full-fledged ecosystem requires collaboration between various parties, including application developers, content providers, and network equipment vendors, who need to embrace new business models.
- **Robustness and Resilience**: It is essential that MEC servers can operate robustly without any impact on mobile networks.
- **Security and Privacy**: New security threats will arise due to the distributed nature of MEC servers, which need to be carefully analyzed and addressed to protect user data.

MEC is implemented based on the following three key components:

- **Edge offloading and Computing**: In addition to offloading rendering computations to the edge nodes, expensive computation tasks (such as matrix multiplication) required for data processing and AI model training, can also be broken down into subtasks and offloaded to edge servers. The computation results can be resumed by aggregating all the completed subtasks at a central node.
- **Edge Caching**: Edge caching helps reduce computational and communication redundancy, by reducing repeated access to popular content or computations. In the Metaverse, the probabilistic models of file popularity distributions (such as field of view) can be learned. The popular field of view can then be stored on edge nodes close to users who need more reduction in computational cost and rendering latency.
- **Privacy-preserving Local model Training**: As more users connect to the Metaverse, the risk of data breaches increases as the attack surface increases. Federated Learning (FL) is one of the solutions to protect user privacy [183], [184]. FL represents an approach of distributed machine learning and learns a global model by aggregating users' uploaded models trained on local devices without directly leaking private information.

4) *Applications in Metaverse*: Researchers have proposed several solutions to improve the performance of Metaverse applications by using the latency advantages of

edge computing. For example, the MEC was introduced into the Metaverse to improve the quality of user experience [185], where dynamic edge nodes in the MEC architecture are as close to users, and multiple edge nodes can be combined to assist in completing the same user's instructions, effectively solving the delay issues caused by user mobility in the Metaverse. However, the cooperation of multiple edge nodes requires the transmission of user data [186], which may lead to serious consequences such as user privacy leakage and identity crisis in the Metaverse. An FL-based MEC architecture for the Metaverse was proposed in [187] to protect users' privacy, where locally trained models are transmitted between edge nodes instead of user data. Furthermore, a directed acyclic graph was established by the edge nodes to improve the system's computational efficiency.

The authors of [140] investigate a three-layered MEC-based deep learning platform for the control of epidemics such as COVID-19. In particular, the health data of the users, such as patients in hospitals, or people in smart homes, can be collected at the first layer. The local computation of the edge server and edge nodes is at the second layer, where the hospital test data and human vital signs are analyzed. At the third layer, cloud computing trains deep learning models to identify, locate, and specify the identity of individuals for safety or health risks.

The responsible AI transparentizes the AI decision-making processes, while the cost-effective MEC and the high-speed data communication reduce the transmission latency and the service response time. Based on those pillar technologies, it is feasible to construct IoT-based digital twins.

5) *Lessons learned and use cases*: Minimizing the transmission latency and backhaul traffic load for AR/VR applications can be formulated as an integer linear program problem. This optimization has been proved to be NP-Hard [188]. In the Metaverse, the request arrival information can be unknown. Therefore, it is necessary to implement online caching replacement schemes to perform cache replacement upon the arrival of each new request [189]. Federated learning can be used with MEC to establish a united model for multiple enterprises while local data privacy is protected so that enterprises can provide secure Metaverse applications [190].

The use of MEC to enhance the Metaverse experience has also attracted wide attention from the academic community. Dai et al. [179] designed a 360-degree VR caching system based on view synthesis over MECCache servers in Cloud Radio Access Network (C-RAN) to promote the QoE of wireless VR applications. Both Gu et al. [191] and Liu et al. [192] exploited sub-6 GHz and mmWave links combined with MEC resources to deal with the constrained VR HMDs resources and transmission rate bottlenecks of normal VR and panoramic VR video (PVRV) transmission.

D. IoT-based digital twins

1) *Motivation*: Digital twins create a virtual replica of physical objects or services, such as building facilities, op-

erational processes, human-computer interaction, and social services. In the Metaverse, digital twins are typically used to provide an immersive shopping experience in the physical world. Combining digital replicas with physical products and services can also support data analytics, allowing commercial individuals to utilize physical-world scenarios for simulations before making costly decisions. As digital representations of physical-world entities, digital twins can synchronize assets, processes, and operating systems with the real world and everyday actions such as visualization, analysis, and prediction [193]. The digital twins are central to how the physical and virtual worlds interact through the IoT connections [194]. Therefore, changes in the physical world are refused in the digital world. These unique digital twins could be one of the fundamental building blocks of the Metaverse, creating replicas of the physical world, including its structure and functionality, to serve as gateways for users to access and enjoy virtual services. For example, an engineer could create a 3D representation of a complex system at different levels of complexity (i.e., descriptive, informational, predictive, holistic, autonomous) for different functionality. Digital twins enable engineers and service providers to clone virtual objects of machines and processes and perform physical analysis remotely via AI [195].

Since the concept of digital twins was first proposed by David Gelernter in his book [196], digital twins have given businesses an unprecedented view of how the products are designed, operated, and performed, which helps make it easier to provide better products or service.

According to Fortune Business Insights [197], the global digital twins market size has reached \$6.75 billion in 2021 and is projected to reach \$96 billion in 2029, at a compound annual growth rate (CAGR) of 40.6% during the forecast period, as shown in Figure 7, a major driver is NVIDIA Corporation unveiling a new platform to expand the user base, while COVID-19 restricts industry development.

The global market share based on end-users in 2021 [197] is illustrated in Figure 8. Among end users, the digital twin applications that occupy the largest share are automotive and transportation. The reason is mainly due to breakthroughs in advanced technologies such as AI and the continuous development of the commercial value of autonomous vehicles. In addition, industrial manufacturing and aircraft manufacturing account for a high proportion, both exceeding 20%. The market share of digital twins in IT and communication, healthcare, and smart homes is around 10%, which are all emerging digital twin applications and have great development prospects.

Many businesses, such as NVIDIA [198], are investigating the correlation of the Metaverse and digital twins, introducing new possibilities and experiences for digitally-driven consumers. *LeewayHertz* [199] believes that as more companies and enterprises use digital twins to build products and digital Apps in the Metaverse, they can create entire ecosystems over time. Due to the high development cost, the existing digital twins are mainly used for the construction of complex, multi-level large-scale industrial

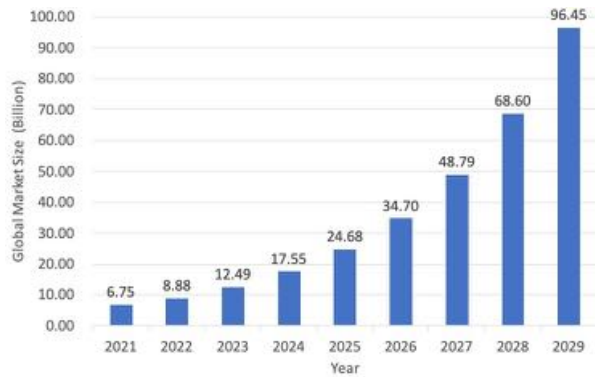


Fig. 7: Prediction of digital twins market size.

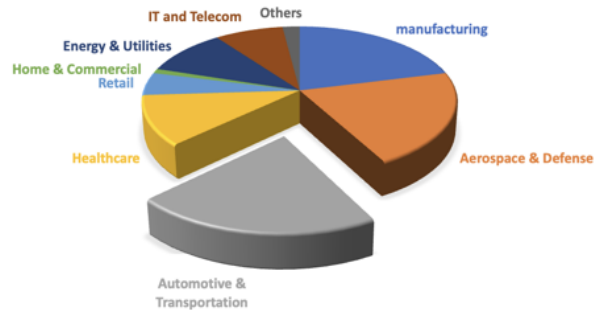


Fig. 8: The global market share of the digital twins in 2021.

products or systems, such as manufacture [200], healthcare [81], engineering, and smart cities [82], [201].

2) *Significance*: Digital twins produce a digital representation of a physical-world product or service. Implementing digital twins is an encapsulated software object or model, where multiple IoT data are aggregated to create composite views across many physical-world entities. When we take an object in the physical world and create an exact copy of the same object in the digital world, this system allows users and engineers to mimic the behavior of real objects and predict their movements and reactions. Digital twins, therefore, enable strategic product development while avoiding the potential for costly mistakes. Digital twins are one of the core building blocks of the Metaverse due to their unique nature. The IoT-empowered Metaverse helps people create virtual worlds and experiences beyond the wildest dreams, and build exact replicas of reality that can bring reality to the digital world [202], [203].

3) *Challenges and key technologies*: The following three key challenges are standing in the way of adopting digital twins on a large scale:

- Limited data: Due to the insufficient number of sensors and still ongoing digital transformation, there is limited real-time data to turn digital twins into useful tools across all regions. Additionally, the available data are usually collected from a limited amount of sensors, making it hard for accurate digital twins representation.
- Inconsistent data format: Sensory data collected from

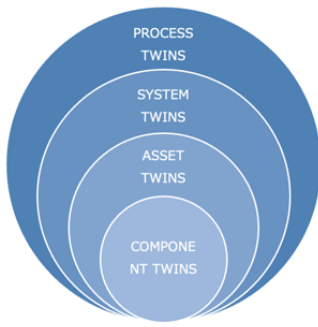


Fig. 9: The hierarchical architecture of digital twins.

IoT devices is stored/presented in various formats and, therefore, is difficult to be integrated into the data platform of the digital twins.

- Transparency and security: As most of the physical assets for which one can envision digital twins will require a high level of safety and security, there will be a need for greater transparency and interpretability of the decisions taken based on digital twins.

Digital twins can be divided based on their scale and inclusiveness into component twins, asset twins, system twins, and process twins [204], as illustrated in Figure 9. We also summarize the correspondence between different applications and this development architecture in Table IV.

- Component twins: the component-based approach [205] can be applied to large complex digital twins. The model adaptation and uncertainty quantification of the Metaverse application can be formulated as a Bayesian state estimation problem [206], where the data in the physical world infer which models in the model library are the best candidates for the digital twins. To avoid data redundancy and reduce costs, the approach selects qualified components to be replicated in the digital twins. Microsoft developed an Azure Digital Twins (ADT) platform [207], which not only allows the creation of models but also provides a graph API to query and interact with its twins. The ADT platform allows users to visualize and explore the relationship among the components. For example, the user can create 3D digital twins of a factory with an intuitive interface that allows operators to monitor the state of each machine. In particular, an instance of each 3D object referenced in ADT has to be loaded into the 3D scene. This is inefficient if the same object is loaded multiple times in different locations. The future component twins need a single instance of the 3D object that can be streamed, loaded to memory, and drawn multiple times.
- Asset twins: this approach is designed for creating data-driven digital twins, which utilize a library of physics-based reduced-order models [205]. By sharing a single model library across several assets, this approach can scale to the Metaverse application in which a large number of digital twins are required [208].

The asset twins formulate an estimation problem in which online sensor data from a physical asset is used to infer which models in the model library should comprise the digital twin [209]. In addition, future asset twins need to improve the robustness of the model selection concerning corrupted data. Several mechanisms should also be developed to improve the robustness while incorporating several damage models that can detect and classify the actually damaged assets. GE Healthcare [210] states that some asset twins have been used to solve healthcare problems in hospitals, such as staffing model design and surgical block schedule optimization.

- System twin: System twins operate at the next level, where different assets are combined to form a fully functional system, such as a brake system in automobile [200]. System twins provide visibility into asset interactions, further enhancing performance [211].
- Process twin: Process Twin leverages high-performance computing methods to optimize equipment and the entire manufacturing process by integrating multi-dimensional process knowledge models [73]. By integrating production procedures and economics, manufacturers can achieve unprecedented efficiency and insight.

4) *Applications in Metaverse*: To monitor and analyze welder behavior, a digital twins system has been designed with VR and AI technologies in [215]. In [216], a data-driven digital twins framework was investigated to improve health diagnosis performance and operation in smart medical systems. Digital twins were designed in [217] to replicate a virtual representation of agricultural production, where ML algorithms process the sensory data obtained from actual sensors in decision support systems.

In California, a visualization of wildfire areas was created. Fire behavior analysts can use visualizations and data for predictions that allow firefighters to better extinguish real-world fires by taking data from simulated experiences without injury. To detect production errors and mistakes, enterprises create digital twins of their factories and manufacturing plants. Visualizing all aspects of production helps optimize the design, manufacturing, and labor processes. Retail and e-commerce companies allow customers to shop at virtual storefronts at home. Product availability is updated in real-time, and consumers can interact with the items they intend to buy. In the Metaverse, client meetings could be as simple as a client visiting your virtual headquarters and sitting in your virtual conference room, eliminating the need for travel, while providing people with a face-to-face experience. Enriching digital objects with connections to data sources within the Metaverse can provide teams with every piece of information they need about the companies or individuals they will encounter to gain an edge in meetings and proactively help them.

Metaverse uses digital twins throughout the product development life cycle, from designing to post-production monitoring and service, to improve productivity and profitability [218], [219]. During the product ideation phase

TABLE IV: Hierarchical evolution

Scenarios \ Architecture	Component twin	Asset twin	System twin	Process twin
Manufacture	Sensor, screw [200]	Engine, pump [200]	Electricity, brake [200]	Collaboration [200]
Supply chain	Shipments [212]	Supply environment [213]	Individual stores	Chain improvement [212]
Healthcare	Surgical equipment	Hospital [85]	Medical system [214]	Emergency rescue [81]
Smart city	Infrastructure [86]	Campus [86], hospital [85]	Small community	Efficient city operation [82], [201]

of Metaverse, digital twins can be used to build virtual prototypes for Metaverse [87] and generate large amounts of predictive data about performance outcomes. Before investing in a physical prototype, make necessary product improvements based on forecast results to meet pre-set requirements. This helps businesses save time and cost by reducing the number of iterations required to bring a Metaverse product into production.

5) *Lessons learned and use cases*: Digital twins are of little value unless IoT networks are updated with real-time data, a task that machine learning and AI have grappled with for quite some time. The Metaverse is where IoT and digital twins gather and celebrate, and users look forward to using some cool AR/VR applications and experiencing immersive services in 2022 and beyond [220]. First, we have to correct a misconception, namely, the idea that the virtual scan object is the digital twins of the Metaverse. A scanned object can be the outlook of digital twins. Still, it can be used in digital twins only when the actual metadata & physical-world data feed from IoT devices are overlaid simultaneously. Linking physics objects in digital form with overlay data is significant in complex simulations [221].

During the development of Metaverse products, digital twins help improve the development process in the following ways, including process optimization, remote device diagnostics, and supply management. For example, digital twins help identify potential failures, troubleshoot remotely, and ultimately improve customer satisfaction [222]. In supply chain optimization, the production timing and supply routes can be optimized by digital twins [212]. New methods can be discovered by adjusting the digital twins to optimize production, reduce variance, and aid in root cause analysis. Digital twins can also be used in later stages for metaverse products, such as cost reduction, predictive maintenance, and service improvement. When commercializing metaverse products, digital twins can collect user data over time to gain insights into product performance and service experience [223]. This data can help engineers and designers improve the customer experience through customized services.

V. OPEN ISSUES IN THE FUTURE IoT-EMPOWERED METAVERSE

Despite the studied four pillar technologies that can be leveraged to empower the Metaverse with IoT, further development and implementation of IoT-empowered Metaverse need to address the following critical open issues.

A. Data processing

The Metaverse applications, such as AR and VR, need to collect real-time IoT data to analyze the behaviors or states of the physical world objects or procedures [224]. How to monitor equipment and collect data from all aspects, including initial data, monitoring information, operational information, business data, and program data are very challenging [225].

Once the real-time IoT data is collected, the data mining and data analysis have to be performed [226]. Unlike traditional simulations [222], [227], the Metaverse can run multiple simulation processes with real-time data and give real-time feedback to the source object for improvement. These simulation processes rely on data modeling techniques, such as engineering simulations [219], [228], physical analysis [223], [229], machine learning [85], neuromorphic computing [230], and data mining [223] to help users/engineers have a full view into how the virtual world is performing.

Spatial computing [231], [232] can be applied to human interaction with IoT devices, where the IoT devices retain and manipulate referents to real objects and spaces. To utilize spatial computing, the Metaverse needs to ensure data scalability and diversity, for example, room temperature, service locations, AR/VR equipment details, users' health conditions, social connections, hobbies and interests. Moreover, most commercial AR/VR equipment has various sensors that generate a huge amount of data with different modalities and types. Note that the Metaverse can take advantage of data fusion techniques from different data sources to regenerate a comprehensive view (e.g., car driving and road condition), rather than multiple separate perspectives [225], [233]. Data management issues such as storage, transmission, security, and privacy of dense information are critical [234], [235]. Constructing a standardized semantic representation of different data [84], [236], which is used to communicate between intelligent machines inside the Metaverse, is a good way to compress transmission information, reduce transmission delay and encrypt the original data. In addition, ensemble learning techniques can also be considered for data fusion. Data fusion is also a key to the Metaverse to enhance the interoperability between different platforms and systems [237], [238].

B. Security and privacy

In the Metaverse, shared user data and 3D virtual spaces are interweaved with the IoT system and merged for remote

TABLE V: Data processing

Requirements	Challenges	Potential Technologies
Data Collection	Real-time sensory data, Data transmission	IoT network, Sensor network
Data Modeling	Data mining, Data analysis, and Real-time feedback	Engineering simulations, Physical analysis, Machine learning, Neuromorphic computing, and Data mining
Data Fusion	Storage, Transmission, Security and privacy	Intelligent Machine Communication Network, Semantic Communication, Ensemble Learning

virtualization. The Metaverse is very likely to integrate services, applications, or IoT systems from multiple companies or institutions [239]. As a result, the major security and privacy concern are due to the fact that the integration of different IoT devices requires all partners to coordinate and interact data with each other.

Responsible AI is expected to help the Metaverse developers and designers understand the “black box” of AI, which improves the integration efficiency of the IoT systems. However, these explanations also expose extra information about the AI decision-making process that utilizes sensitive users’ private information. Such a privacy leakage can be utilized by the attacker, for example, to identify certain users and their health conditions given attributes such as gender, race, and birth date. The attacker can also inject a relatively small amount of poisoned data into the AI model. Since the AI model is typically used to process the “big data”, detecting the poisoned malicious data in the Metaverse application is difficult. With the growth of the training time, such inconspicuous poisoned data can affect more and more functions in the AI model, eventually resulting in Metaverse service failures.

Furthermore, the human-machine interface poses security and privacy risks to the responsible AI. Especially when the Metaverse is applied to autonomous vehicles and industrial manufacturing. Due to the dynamic application environment, it is difficult for Metaverse developers and designers to recognize when the AI model should be overruled, or the human’s decision can override the AI model. Human judgment can prove faulty in overriding system results, such as scripting errors, lapses in data management, or misjudgments in model-training data. Therefore, rigorous safeguards at the human-machine interface are critical for responsible AI, which can protect the Metaverse from corrupting algorithms or using the AI model in malfeasant ways.

The Metaverse, as it is imagined today, requires the transfer of huge amounts of personal and/or critical data [240]. Security, privacy, and trustworthiness will be more difficult in the Metaverse than in the physical world [91], thus providing the technical and social means to assert rights and enforce regulations may not get any easier. The Metaverse relies on IoT data to operate. Cyber-attacks and data storage are the major challenges for deploying the Metaverse applications like gaming, socializing, real estate, and healthcare [241], [242]. The cybersecurity of the Metaverse interfaces has to be secured to create a sustainable Metaverse that can be used in the long term.

C. Real-time 3D modeling

One of the critical components in the Metaverse is 3D modeling, which aims to stream the AR/VR experiences like streaming a movie. Typically, AR/VR-based computer games require powerful gaming computers to process the data as fast as possible. Moreover, it is a bottleneck in the communication networks to provide fast access to many AR/VR online games in parallel. The data exchange delay between the IoT devices (generally measured in milliseconds (ms)) determines the number of frames per second (FPS) streaming to an IoT device. If the IoT devices slow the frame rates to 15-30 FPS, when people turn their heads up and down, or left and right, it might make the user feel dizzy in the AR/VR experience. Therefore, 15-30 FPS is the minimum for most AR/VR games. In addition, the frame rates normally should be set to 60 FPS, which is ideal for AR/VR games. 90 FPS is usually a comfortable standard and a bare minimum for VR. In particular, the current 4G technology supports around 50ms (about 20 FPS) on average for data communication, which can result in an uncomfortable immersive experience. The communication delay in 5G can be reduced to less than 10ms. This can afford the frame rates of 90 FPS leading to real-time 3D modeling and a comfortable immersive experience.

The IoT network should ensure that AR/VR applications of multiple users are highly synchronized with a low latency [243]. This requirement is a guarantee for supporting the users’ smooth, immersive experiences whenever and wherever possible. This means that, on the one hand, the network requirements are at least beyond 5G (B5G) or even 6G [244]; on the other hand, huge data monitoring and real-time computing can further boost the capacity demand in cloud computing.

D. Scalable cyber worlds

The Metaverse has been listed as one of the top five emerging trends and technologies of the next ten years. Global spending on IoT development is expected to rise from \$12 billion in 2020 to \$72.8 billion in 2024. More than 200 major brands, such as Nike, Samsung, and JP Morgan, have already shifted some of their customer-oriented activities to the Metaverse. It can be envisioned that increasingly more IoT devices will be empowered to create and populate virtual worlds for users in social media with relative ease and low barriers to access services. As IoT applications grow day by day, scalability is going to be a major issue with any Metaverse platform. The Metaverse must be constructed on a decentralized architecture to enhance its scalability. The user’s location information and

scene status in real-time interaction need to be stored offline.

Bandwidth that defines the amount of data transmitted over time is a critical requirement for conducting high-speed data communication, as well as achieving the scalability of the IoT networks in the Metaverse. The bandwidth requirement is huge for most Metaverse applications, like AR/VR games. Those applications typically execute many uploading and downloading operations in video streaming, transaction, etc. The downloading and uploading demand increases as more participants join the Metaverse. Millions of users could use the Metaverse simultaneously, while the data transfer rate should remain at 100 Mbps for the individual user. To maintain the quality of experience, scalable AI and communication techniques will be required.

E. Connected mobile users' experience

Low-earth orbit (LEO) satellites are developed to provide internet services to help achieve universal connectivity. Compared to a geosynchronous (GEO) satellite, the LEO satellite shortens the distance that the signal has to travel and reduces the latency. For example, the TDMA-based Iridium (by Motorola) and the CDMA-based GlobalStar are the two typical and operational LEO satellite systems. However, the LEO satellite system must be built with many satellites to support connected users' experience in the Metaverse. Moreover, the data packet is routed among the LEO satellites until the data can be forwarded to the end user. The satellite-to-satellite communication introduces tremendous forwarding delays.

Unlike the LEO satellite systems, in the ground high-speed data networks, the communication distance between the IoT device and the BS is short. In a cellular radio access network, the BS can tightly schedule when the IoT device sends or receives data, which increases communication efficiency. The BS can also enable the prioritization of the application according to different access capacities and latency. However, this comes at the expense of a phenomenally complex network management protocol.

AR/VR is highly graphics-intensive and is limited by the power of the IoT device's processor. Based on the MEC structure, the cloud at the BS can be leveraged for graphic processing. For example, Google's Stadia gaming platform allows users to play online games, while the cloud processes their data and the user's IoT device streams the AR/VR output. The response latency has to be highly reduced for the AR/VR application, where small delays of 30 ms can cause discomfort and even sickness.

F. Interoperability and uniformity of virtual platforms

Building the IoT-based digital twins has to rely on a virtual platform that allows the developers to implement IoT applications and services, such as VR/AR, autonomous driving, or E-shopping. Many Metaverse platforms are launched onto the market to replace social media in the near future, for example, Sandbox, Decentraland, Axie Infinity, Metahero, Bloktopia, etc.

However, the lack of interoperability and uniformity between the various Metaverse platforms is one of the biggest challenges to the development of IoT-based digital twins. Due to differences in the API standard, the current Metaverse platforms do not allow data exchange with any other platforms. This restricts the IoT applications' access in different service domains. In ideal digital twins, users in the physical world expect to have an uninterrupted immersive experience across multiple virtual platforms. Their physical assets can be transferred from one place to another without trouble. Since the IoT-based digital twins are expected to provide a variety of digital services, the IoT applications need to be able to seamlessly switch among the various interconnected virtual worlds.

Ensuring interoperability requires achieving interoperability between the users and the platforms, between the platforms, and between the different operating systems. One of the major advances of the Metaverse is to propose a virtual world [245] in which the users can join and work together on different activities such as playing games, watching movies, and working. From the current situation, there is more than one company developing the Metaverse platforms [113]. Prominent among them are Facebook, Microsoft, and Apple [107]. The IoT networks also need different devices to join multiple Metaverse platforms and interact with different groups. In addition, ensuring interoperability [246] also includes compatibility between different activities, locations, and events in the Metaverse, as well as interoperability of heterogeneous networks in the platform. Therefore, the future Metaverse has to be built on an interconnected virtual platform that transcends the borders of different IoT applications. There will need to be a web of public and private standards, norms, and rules for diverse IoT applications to operate across jurisdictions.

G. Barriers of the physical world

To satisfy the "anywhere, anytime, and any participant" requirement in the IoT-empowered Metaverse, a variety of techniques in terms of the four pillars, such as spatial computing, distributed computing, and platforms/solutions for cross-cloud, have been studied. Those techniques can enhance human interaction with IoT devices that manipulate referents to real objects and spaces.

Currently, the Metaverse is driven mainly by internet giants, such as Tencent, Xiaomi, Apple, and Facebook [247]. Due to interests or national policies, the virtual world created by the Metaverse is often limited by the platforms and operating systems. Once the platform is closed or inaccessible, "anywhere, anytime, and any participant" cannot be realized. Interoperability between different operating systems, such as IOS and Android [241] users, also has many problems. To achieve seamless access, breaking down barriers between the platforms and operating systems is necessary, which is not easy to achieve.

At present, the Metaverse highly depends on AR/VR technologies and IoT devices [90]. Most of them are difficult to adopt because the hardware is not lightweight,

portable, or affordable [248]. Computing power can be solved by transferring the computing core to the phone or the cloud, while the battery life is difficult to break through in a short time [249]. There is also a need to develop diverse experiences in software and hardware portability [250]. Diversified devices are not yet lightweight.

To realize the Metaverse, advanced technology and algorithms are essential [92]. Firstly, the Metaverse relies on high-quality, high-performance models that can achieve the right retina display and pixel density for a realistic virtual immersion [99]. Secondly, the Metaverse needs to be powered by other technologies such as AI, AR/VR, blockchain, and web [251] to ensure that the Metaverse can create secure, scalable, and realistic virtual worlds on a reliable and always-on platform. Thirdly, the Metaverse services need to be applied to people's daily life, where the new IoT technologies and hardware can be validated and improved.

VI. CONCLUSION

This paper presents the IoT-inspired applications that can provide users with immersive cyber-virtual experiences in healthcare, education, smart city, entertainment, real estate, and socialization. Four pillar technologies are comprehensively surveyed with their typical IoT applications in the Metaverse, including responsible AI, high-speed data communications, cost-effective MEC, and digital twins. The four pillar technologies can be leveraged to bridge the IoT applications with the Metaverse, which aims to achieve convergence of physical and cyber worlds. For each pillar technology, we focus on the motivation, significance, key technologies, and typical applications in the Metaverse. Furthermore, we extend the discussions about the critical open issues for further development and implementation in the IoT-inspired Metaverse in terms of data processing, security and privacy, real-time 3D modeling, scalable cyber worlds, connected mobile users' experience, interoperability and uniformity of virtual platforms, and barriers of the physical world.

ACKNOWLEDGEMENTS

This work was supported in part by the National Funds through FCT/MCTES (Portuguese Foundation for Science and Technology), within the CISTER Research Unit under Grant UIDP/UIDB/04234/2020, and in part by national funds through FCT, within project PTDC/EEICOM/3362/2021 (ADANET).

REFERENCES

[1] M. Slovick. (2020, 11) The AR-VR age has begun in health care. [Online]. Available: <https://www.cta.tech/Resources/i3-Magazine/i3-Issues/2020/November-December/The-AR-VR-Age-has-Begun-in-Health-Care>

[2] (2022, 06) AR and VR in education market. [Online]. Available: <https://www.marketresearchfuture.com/reports/ar-vr-in-education-market-10834>

[3] T. G. Kanter, "The metaverse and extended reality with distributed IoT," *IEEE Internet of Things Magazine (IoT)*, 2021.

[4] N. Pereira, A. Rowe, M. W. Farb, I. Liang, E. Lu, and E. Riebling, "Arena: The augmented reality edge networking architecture," in *2021 IEEE International Symposium on Mixed and Augmented Reality (ISMAR)*. IEEE, 2021, pp. 479–488.

[5] A. H. Sodhro, S. Pirbhulal, and A. K. Sangaiah, "Convergence of IoT and product lifecycle management in medical health care," *Future Generation Computer Systems*, vol. 86, pp. 380–391, 2018.

[6] N. Promwongsa, A. Ebrahimzadeh, D. Naboulsi, S. Kianpisheh, F. Belqasmi, R. Glietho, N. Crespi, and O. Alfandi, "A comprehensive survey of the tactile internet: State-of-the-art and research directions," *IEEE Communications Surveys & Tutorials*, vol. 23, no. 1, pp. 472–523, 2020.

[7] A. Aijaz and M. Sooriyabandara, "The tactile internet for industries: A review," *Proceedings of the IEEE*, vol. 107, no. 2, pp. 414–435, 2018.

[8] E. Lu, J. Miller, N. Pereira, and A. Rowe, "FLASH: Video-embeddable ar anchors for live events," in *IEEE International Symposium on Mixed and Augmented Reality (ISMAR)*. IEEE, 2021, pp. 489–497.

[9] R. Minerva, G. M. Lee, and N. Crespi, "Digital twin in the IoT context: a survey on technical features, scenarios, and architectural models," *Proceedings of the IEEE*, vol. 108, no. 10, pp. 1785–1824, 2020.

[10] E. Steinbach, M. Strese, M. Eid, X. Liu, A. Bhardwaj, Q. Liu, M. Al-Ja'afreh, T. Mahmoodi, R. Hassen, A. El Saddik *et al.*, "Haptic codecs for the tactile internet," *Proceedings of the IEEE*, vol. 107, no. 2, pp. 447–470, 2018.

[11] N. Stojanovic and D. Milenovic, "Data-driven digital twin approach for process optimization: An industry use case," in *IEEE International Conference on Big Data (Big Data)*. IEEE, 2018, pp. 4202–4211.

[12] M. Farsi, A. Daneshkhah, A. Hosseinian-Far, and H. Jahankhani, *Digital twin technologies and smart cities*. Springer, 2020.

[13] J. Thomason, "Metahealth-how will the metaverse change health care?" *Journal of Metaverse*, vol. 1, no. 1, pp. 13–16, Dec. 2021.

[14] B. Kye, N. Han, E. Kim, Y. Park, and S. Jo, "Educational applications of metaverse: possibilities and limitations," *Journal of Educational Evaluation for Health Professions*, vol. 18, 2021.

[15] T. Ruohomäki, E. Airaksinen, P. Huuska, O. Kesäniemi, M. Martikka, and J. Suomisto, "Smart city platform enabling digital twin," in *2018 International Conference on Intelligent Systems (IS)*, 2018, pp. 155–161.

[16] J. Y. Lee, "A study on metaverse hype for sustainable growth," *International journal of advanced smart convergence*, vol. 10, no. 3, pp. 72–80, 2021.

[17] K. G. Nalbant and Ş. UYANIK, "Computer vision in the metaverse," *Journal of Metaverse*, vol. 1, no. 1, pp. 9–12, 2021.

[18] H. Ning, H. Wang, Y. Lin, W. Wang, S. Dhelim, F. Farha, J. Ding, and M. Daneshmand, "A survey on metaverse: the state-of-the-art, technologies, applications, and challenges," *arXiv preprint arXiv:2111.09673*, 2021.

[19] A. M. Maatuk, E. K. Elberkawi, S. Aljawarneh, H. Rashaideh, and H. Alharbi, "The covid-19 pandemic and e-learning: challenges and opportunities from the perspective of students and instructors," *Journal of Computing in Higher Education*, vol. 34, no. 1, pp. 21–38, 2022.

[20] H. B. Demeke, S. Merali, S. Marks, L. Z. Pao, L. Romero, P. Sandhu, H. Clark, A. Clara, K. B. McDow, E. Tindall *et al.*, "Trends in use of telehealth among health centers during the covid-19 pandemic—united states, june 26–november 6, 2020," *Morbidity and Mortality Weekly Report*, vol. 70, no. 7, p. 240, 2021.

[21] A. Musamih, I. Yaqoob, K. Salah, R. Jayaraman, Y. Al-Hammadi, M. Omar, and S. Ellahham, "Metaverse in healthcare: Applications, challenges, and future directions," *IEEE Consumer Electronics Magazine*, 2022.

[22] K. Li, C. Yuen, S. S. Kanhere, K. Hu, W. Zhang, F. Jiang, and X. Liu, "An experimental study for tracking crowd in smart cities," *IEEE systems journal*, vol. 13, no. 3, pp. 2966–2977, 2018.

[23] B. Wei, K. Li, C. Luo, W. Xu, J. Zhang, and K. Zhang, "No need of data pre-processing: A general framework for radio-based device-free context awareness," *ACM Transactions on Internet of Things*, vol. 2, no. 4, pp. 1–26, 2021.

[24] B. P. L. Lau, T. Chaturvedi, B. K. K. Ng, K. Li, M. S. Hasala, and C. Yuen, "Spatial and temporal analysis of urban space utilization with renewable wireless sensor network," in *Proceedings of the 3rd IEEE/ACM International Conference on Big Data Computing, Applications and Technologies*, 2016, pp. 133–142.

- [25] K. Li, C. Yuen, and S. Kanhere, "Senseflow: An experimental study of people tracking," in *Proceedings of the 6th ACM Workshop on Real World Wireless Sensor Networks*, 2015, pp. 31–34.
- [26] M. G. Hanna, I. Ahmed, J. Nine, S. Prajapati, and L. Pantanowitz, "Augmented reality technology using microsoft hololens in anatomic pathology," *Archives of pathology & laboratory medicine*, vol. 142, no. 5, pp. 638–644, 2018.
- [27] N. Rajagopal, J. Miller, K. K. R. Kumar, A. Luong, and A. Rowe, "Improving augmented reality relocation using beacons and magnetic field maps," in *International Conference on Indoor Positioning and Indoor Navigation (IPIN)*. IEEE, 2019, pp. 1–8.
- [28] H. S and L. CI, "Research trends on augmented reality education in korea from 2008 to 2019," *J Educ Technol.*, vol. 36, pp. 505–528, 2020.
- [29] Curiscope, "Virtuali-tee: augmented reality t-shirt." [Online]. Available: <https://www.curiscope.com/>
- [30] L. Chang, Z. Zhang, P. Li, S. Xi, W. Guo, Y. Shen, Z. Xiong, J. Kang, D. Niyato, X. Qiao *et al.*, "6G-enabled edge AI for Metaverse: Challenges, methods, and future research directions," *arXiv preprint arXiv:2204.06192*, 2022.
- [31] C. Meier, J. Saorín, A. B. de León, and A. G. Cobos, "Using the roblox video game engine for creating virtual tours and learning about the sculptural heritage," *International Journal of Emerging Technologies in Learning (iJET)*, vol. 15, no. 20, pp. 268–280, 2020.
- [32] B. Ryskeldiev, Y. Ochiai, M. Cohen, and J. Herder, "Distributed metaverse: Creating decentralized blockchain-based model for peer-to-peer sharing of virtual spaces for mixed reality applications," in *Proceedings of the 9th Augmented Human International Conference*. New York, NY, USA: Association for Computing Machinery, 2018. [Online]. Available: <https://doi.org/10.1145/3174910.3174952>
- [33] H. C. Hou and H. Wu, "Technology for real estate education and practice: a vr technology perspective," *Property Management*, 2020.
- [34] M. Izani, S. Aalkhalidi, A. Razak, and S. Ibrahim, "Economical vr/ar method for interior design programme," in *2022 Advances in Science and Engineering Technology International Conferences (ASET)*, Feb. 2022, pp. 1–5.
- [35] Y. Zhang and L. Yao, "How the leading chinese real estate brokerage transformed into a digital platform business," *Strategy & Leadership*, 2021.
- [36] J. Kim and J. Kim, "Bim to ar matching technology of building maintenance platform using 5g-based ar," 2021.
- [37] J.-G. Kim, "A study on metaverse culture contents matching platform," *International Journal of Advanced Culture Technology*, vol. 9, no. 3, pp. 232–237, 2021.
- [38] T. Lyttelton, E. Zang, and K. Musick, "Telecommuting and gender inequalities in parents' paid and unpaid work before and during the covid-19 pandemic," *Journal of Marriage and Family*, vol. 84, no. 1, pp. 230–249, 2022.
- [39] V. Dignum, "The role and challenges of education for responsible ai," *London Review of Education*, vol. 19, no. 1, pp. 1–11, 2021.
- [40] H. Khosravi, S. B. Shum, G. Chen, C. Conati, Y.-S. Tsai, J. Kay, S. Knight, R. Martinez-Maldonado, S. Sadiq, and D. Gašević, "Explainable artificial intelligence in education," *Computers and Education: Artificial Intelligence*, vol. 3, p. 100074, 2022.
- [41] D. Thakker, B. K. Mishra, A. Abdullatif, S. Mazumdar, and S. Simpson, "Explainable artificial intelligence for developing smart cities solutions," *Smart Cities*, vol. 3, no. 4, pp. 1353–1382, 2020.
- [42] I. Ahmed, G. Jeon, and F. Piccialli, "From artificial intelligence to explainable artificial intelligence in industry 4.0: a survey on what, how, and where," *IEEE Transactions on Industrial Informatics*, vol. 18, no. 8, pp. 5031–5042, 2022.
- [43] C. Ruiz and M. Quaresma, "Explainable ai for entertainment: Issues on video on demand platforms," in *Congress of the International Ergonomics Association*. Springer, 2021, pp. 699–707.
- [44] C. Lucero, C. Izumigawa, K. Frederiksen, L. Nans, R. Iden, and D. S. Lange, "Human-autonomy teaming and explainable ai capabilities in rts games," in *International Conference on Human-Computer Interaction*. Springer, 2020, pp. 161–171.
- [45] B. Krämer, M. Stang, C. Nagl, and W. Schäfers, "Explainable ai in a real estate context-exploring the determinants of residential real estate values," *A Real Estate Context-Exploring the Determinants of Residential Real Estate Values (December 20, 2021)*, 2021.
- [46] R. Liu, S. Gupta, and P. Patel, "The application of the principles of responsible ai on social media marketing for digital health," *Information Systems Frontiers*, pp. 1–25, 2021.
- [47] L. Mucchi, S. Jayousi, S. Caputo, E. Paoletti, P. Zoppi, S. Geli, and P. Dioniso, "How 6g technology can change the future wireless healthcare," in *2020 2nd 6G wireless summit (6G SUMMIT)*. IEEE, 2020, pp. 1–6.
- [48] Y. Liang and J. Zeng, "Ai application in english vocational education through 6g revolution," in *International Conference on 5G for Future Wireless Networks*. Springer, 2022, pp. 532–545.
- [49] S. U. Jamil, M. A. Khan, and S. ur Rehman, "Intelligent task off-loading and resource allocation for 6g smart city environment," in *2020 IEEE 45th Conference on Local Computer Networks (LCN)*. IEEE, 2020, pp. 441–444.
- [50] S. J. Nawaz, S. K. Sharma, M. N. Patwary, and M. Asaduzzaman, "Next-generation consumer electronics for 6g wireless era," *IEEE Access*, vol. 9, pp. 143 198–143 211, 2021.
- [51] W. Konhäuser, "Digitalization in buildings and smart cities on the way to 6g," *Wireless Personal Communications*, vol. 121, no. 2, pp. 1289–1302, 2021.
- [52] S. A. Khowaja, P. Khuwaja, K. Dev, I. H. Lee, W. Khan, W. Wang, N. M. F. Qureshi, and M. Magarini, "A secure data sharing scheme in community segmented vehicular social networks for 6g," *IEEE Transactions on Industrial Informatics*, 2022.
- [53] P. Dong, Z. Ning, M. S. Obaidat, X. Jiang, Y. Guo, X. Hu, B. Hu, and B. Sadoun, "Edge computing based healthcare systems: Enabling decentralized health monitoring in internet of medical things," *IEEE Network*, vol. 34, no. 5, pp. 254–261, 2020.
- [54] J. Wu, "Intelligent classroom learning model of college english based on data mining technology in mobile edge computing environment," *Wireless Communications and Mobile Computing*, vol. 2022, 2022.
- [55] M. Li, P. Si, and Y. Zhang, "Delay-tolerant data traffic to software-defined vehicular networks with mobile edge computing in smart city," *IEEE Transactions on Vehicular Technology*, vol. 67, no. 10, pp. 9073–9086, 2018.
- [56] X. Zhang, H. Chen, Y. Zhao, Z. Ma, Y. Xu, H. Huang, H. Yin, and D. O. Wu, "Improving cloud gaming experience through mobile edge computing," *IEEE Wireless Communications*, vol. 26, no. 4, pp. 178–183, 2019.
- [57] M. O. Agyeman, Z. Al-Waisi, and I. Hoxha, "Design and implementation of an iot-based energy monitoring system for managing smart homes," in *2019 Fourth International Conference on Fog and Mobile Edge Computing (FMEC)*. IEEE, 2019, pp. 253–258.
- [58] Y.-H. Hung, C.-Y. Wang, and R.-H. Hwang, "Optimizing social welfare of live video streaming services in mobile edge computing," *IEEE Transactions on Mobile Computing*, vol. 19, no. 4, pp. 922–934, 2019.
- [59] M. Alazab, L. U. Khan, S. Koppu, S. P. Ramu, M. Iyapparaja, P. Boobalan, T. Baker, P. K. R. Maddikunta, T. R. Gadekallu, and A. Aljuhani, "Digital twins for healthcare 4.0-recent advances, architecture, and open challenges," *IEEE Consumer Electronics Magazine*, 2022.
- [60] K. Ahuja, D. Shah, S. Pareddy, F. Khakaj, A. Ogan, Y. Agarwal, and C. Harrison, "Classroom digital twins with instrumentation-free gaze tracking," in *Proceedings of the 2021 CHI Conference on Human Factors in Computing Systems*, 2021, pp. 1–9.
- [61] Z. Lv, D. Chen, and H. Lv, "Smart city construction and management by digital twins and bim big data in covid-19 scenario," *ACM Transactions on Multimedia Computing Communications and Applications*, 2022.
- [62] A. El Saddik, "Digital twins: The convergence of multimedia technologies," *IEEE multimedia*, vol. 25, no. 2, pp. 87–92, 2018.
- [63] G. Schrotter and C. Hürzeler, "The digital twin of the city of zurich for urban planning," *PFG-Journal of Photogrammetry, Remote Sensing and Geoinformation Science*, vol. 88, no. 1, pp. 99–112, 2020.
- [64] F.-Y. Wang, R. Qin, J. Li, Y. Yuan, and X. Wang, "Parallel societies: A computing perspective of social digital twins and virtual-real interactions," *IEEE Transactions on Computational Social Systems*, vol. 7, no. 1, pp. 2–7, 2020.
- [65] S. Sukhmani, M. Sadeghi, M. Erol-Kantarci, and A. El Saddik, "Edge caching and computing in 5G for mobile AR/VR and tactile internet," *IEEE MultiMedia*, vol. 26, no. 1, pp. 21–30, 2018.
- [66] X. Lyu, W. Ni, H. Tian, R. P. Liu, X. Wang, G. B. Giannakis, and A. Paulraj, "Optimal schedule of mobile edge computing for internet of things using partial information," *IEEE Journal on Selected Areas in Communications*, vol. 35, no. 11, pp. 2606–2615, 2017.

- [67] Q. Cui, Z. Gong, W. Ni, Y. Hou, X. Chen, X. Tao, and P. Zhang, "Stochastic online learning for mobile edge computing: Learning from changes," *IEEE Communications Magazine*, vol. 57, no. 3, pp. 63–69, 2019.
- [68] K. Li, W. Ni, L. Duan, M. Abolhasan, and J. Niu, "Swpt: A joint-scheduling model for wireless powered sensor networks," in *GLOBECOM 2017-2017 IEEE Global Communications Conference*. IEEE, 2017, pp. 1–6.
- [69] X. Lyu, H. Tian, W. Ni, Y. Zhang, P. Zhang, and R. P. Liu, "Energy-efficient admission of delay-sensitive tasks for mobile edge computing," *IEEE Transactions on Communications*, vol. 66, no. 6, pp. 2603–2616, 2018.
- [70] K. Li, W. Ni, X. Wang, R. P. Liu, S. S. Kanhere, and S. Jha, "Energy-efficient cooperative relaying for unmanned aerial vehicles," *IEEE Transactions on Mobile Computing*, vol. 15, no. 6, pp. 1377–1386, 2015.
- [71] U. Ahmed, I. Raza, and S. A. Hussain, "Trust evaluation in cross-cloud federation: Survey and requirement analysis," *ACM Computing Surveys (CSUR)*, vol. 52, no. 1, pp. 1–37, 2019.
- [72] Y. Elkhatib, "Mapping {Cross-Cloud} systems: Challenges and opportunities," in *8th USENIX Workshop on Hot Topics in Cloud Computing (HotCloud 16)*, 2016.
- [73] "Digital twin-based process reuse and evaluation approach for smart process planning | SpringerLink." [Online]. Available: <https://link.springer.com/article/10.1007/s00170-018-2748-5>
- [74] K. Li, N. Ahmed, S. S. Kanhere, and S. Jha, "Reliable transmissions in awns by using o-bespar hybrid antenna," *Pervasive and Mobile Computing*, vol. 30, pp. 151–165, 2016.
- [75] A. Fuller, Z. Fan, C. Day, and C. Barlow, "Digital twin: Enabling technologies, challenges and open research," *IEEE Access*, vol. 8, pp. 108952–108971, 2020.
- [76] K. Li, W. Ni, E. Tovar, and M. Guizani, "Joint flight cruise control and data collection in uav-aided internet of things: An onboard deep reinforcement learning approach," *IEEE Internet of Things Journal*, vol. 8, no. 12, pp. 9787–9799, 2020.
- [77] K. Li, W. Ni, E. Tovar, and A. Jamalipour, "On-board deep q-network for uav-assisted online power transfer and data collection," *IEEE Transactions on Vehicular Technology*, vol. 68, no. 12, pp. 12215–12226, 2019.
- [78] R. B. Roy, D. Mishra, S. K. Pal, T. Chakravarty, S. Panda, M. G. Chandra, A. Pal, P. Misra, D. Chakravarty, and S. Misra, "Digital twin: current scenario and a case study on a manufacturing process," *The International Journal of Advanced Manufacturing Technology*, vol. 107, no. 9, pp. 3691–3714, Apr. 2020. [Online]. Available: <https://doi.org/10.1007/s00170-020-05306-w>
- [79] K. Li, W. Ni, L. Duan, M. Abolhasan, and J. Niu, "Wireless power transfer and data collection in wireless sensor networks," *IEEE Transactions on Vehicular Technology*, vol. 67, no. 3, pp. 2686–2697, 2017.
- [80] R. Minerva, G. M. Lee, and N. Crespi, "Digital twin in the iot context: A survey on technical features, scenarios, and architectural models," *Proceedings of the IEEE*, vol. 108, no. 10, pp. 1785–1824, 2020.
- [81] H. Elayan, M. Aloqaily, and M. Guizani, "Digital twin for intelligent context-aware iot healthcare systems," *IEEE Internet of Things Journal*, vol. 8, no. 23, pp. 16749–16757, 2021.
- [82] X. Li, H. Liu, W. Wang, Y. Zheng, H. Lv, and Z. Lv, "Big data analysis of the internet of things in the digital twins of smart city based on deep learning," *Future Generation Computer Systems*, vol. 128, pp. 167–177, 2022. [Online]. Available: <https://www.sciencedirect.com/science/article/pii/S0167739X21003964>
- [83] E. Örs, R. Schmidt, M. Mighani, and M. Shalaby, "A conceptual framework for ai-based operational digital twin in chemical process engineering," in *2020 IEEE International Conference on Engineering, Technology and Innovation (ICE/ITMC)*, 2020, pp. 1–8.
- [84] X. Li, B. He, Z. Wang, Y. Zhou, G. Li, and R. Jiang, "Semantic-enhanced digital twin system for robot–environment interaction monitoring," *IEEE Transactions on Instrumentation and Measurement*, vol. 70, pp. 1–13, 2021.
- [85] M. Austin, P. Delgoshaei, M. Coelho, and M. Heidarinejad, "Architecting smart city digital twins: Combined semantic model and machine learning approach," vol. 36, no. 4, p. 04020026, publisher: American Society of Civil Engineers.
- [86] N. Mohammadi and J. Taylor, *Knowledge Discovery in Smart City Digital Twins*. [Online]. Available: <http://hdl.handle.net/10125/63943>
- [87] A. A. Malik and A. Bilberg, "Digital twins of human robot collaboration in a production setting," *Procedia Manufacturing*, vol. 17, pp. 278–285, Jan. 2018. [Online]. Available: <https://www.sciencedirect.com/science/article/pii/S2351978918311636>
- [88] A. Liljaniemi and H. Paavilainen, "Using digital twin technology in engineering education – course concept to explore benefits and barriers," *Open Engineering*, vol. 10, no. 1, pp. 377–385, 2020. [Online]. Available: <https://doi.org/10.1515/eng-2020-0040>
- [89] S.-M. Park and Y.-G. Kim, "A metaverse: taxonomy, components, applications, and open challenges," *IEEE Access*, 2022.
- [90] L.-H. Lee, T. Braud, P. Zhou, L. Wang, D. Xu, Z. Lin, A. Kumar, C. Bermejo, and P. Hui, "All one needs to know about metaverse: A complete survey on technological singularity, virtual ecosystem, and research agenda," *arXiv preprint arXiv:2110.05352*, 2021.
- [91] Y. Wang, Z. Su, N. Zhang, D. Liu, R. Xing, T. H. Luan, and X. Shen, "A survey on metaverse: Fundamentals, security, and privacy," *IEEE Communications Surveys & Tutorials*, 2022.
- [92] T. Huynh-The, Q.-V. Pham, X.-Q. Pham, T. T. Nguyen, Z. Han, and D.-S. Kim, "Artificial intelligence for the metaverse: A survey," *arXiv preprint arXiv:2202.10336*, 2022.
- [93] F. Wu, C. Lu, M. Zhu, H. Chen, J. Zhu, K. Yu, L. Li, M. Li, Q. Chen, X. Li *et al.*, "Towards a new generation of artificial intelligence in china," *Nature Machine Intelligence*, vol. 2, no. 6, pp. 312–316, 2020.
- [94] C. B. Fernandez and P. Hui, "Life, the Metaverse and everything: An overview of privacy, ethics, and governance in Metaverse," *arXiv preprint arXiv:2204.01480*, 2022.
- [95] J. D. N. Dionisio, W. G. B. III, and R. Gilbert, "3D virtual worlds and the Metaverse: Current status and future possibilities," *ACM Computing Surveys (CSUR)*, vol. 45, no. 3, pp. 1–38, 2013.
- [96] Q. Yang, Y. Zhao, H. Huang, Z. Xiong, J. Kang, and Z. Zheng, "Fusing blockchain and ai with metaverse: A survey," *IEEE Open Journal of the Computer Society*, vol. 3, pp. 122–136, 2022.
- [97] M. A. I. Mozumder, M. M. Sheeraz, A. Athar, S. Aich, and H.-C. Kim, "Overview: Technology roadmap of the future trend of Metaverse based on IoT, blockchain, AI technique, and medical domain Metaverse activity," in *International Conference on Advanced Communication Technology (ICACT)*. IEEE, 2022, pp. 256–261.
- [98] L. U. Khan, Z. Han, D. Niyato, E. Hossain, and C. S. Hong, "Metaverse for wireless systems: Vision, enablers, architecture, and future directions," *arXiv preprint arXiv:2207.00413*, 2022.
- [99] M. Xu, W. C. Ng, W. Y. B. Lim, J. Kang, Z. Xiong, D. Niyato, Q. Yang, X. S. Shen, and C. Miao, "A full dive into realizing the edge-enabled metaverse: Visions, enabling technologies, and challenges," *IEEE Communications Surveys & Tutorials*, 2022.
- [100] L.-H. Lee, P. Zhou, T. Braud, and P. Hui, "What is the metaverse? an immersive cyberspace and open challenges," *arXiv preprint arXiv:2206.03018*, 2022.
- [101] R. A. Sharma, A. Dongare, J. Miller, N. Wilkerson, D. Cohen, V. Sekar, P. Dutta, and A. Rowe, "All that glitters: Low-power spoof-resilient optical markers for augmented reality," in *ACM/IEEE International Conference on Information Processing in Sensor Networks (IPSN)*. IEEE, 2020, pp. 289–300.
- [102] Y. Fu, C. Li, F. R. Yu, T. H. Luan, P. Zhao, and S. Liu, "A survey of blockchain and intelligent networking for the metaverse," *IEEE Internet of Things Journal*, 2022.
- [103] S. Mystakidis, "Metaverse," *Encyclopedia*, vol. 2, no. 1, pp. 486–497, Feb. 2022. [Online]. Available: <https://www.mdpi.com/2673-8392/2/1/31>
- [104] M. Zallio and P. Clarkson, "Inclusive metaverse. how businesses can maximize opportunities to deliver an accessible, inclusive, safe metaverse that guarantees equity and diversity." 2022.
- [105] H. Duan, J. Li, S. Fan, Z. Lin, X. Wu, and W. Cai, "Metaverse for social good: A university campus prototype," in *Proceedings of the 29th ACM International Conference on Multimedia*, 2021, pp. 153–161.
- [106] S. Kraus, D. K. Kanbach, P. M. Krysta, M. M. Steinhoff, and N. Tomini, "Facebook and the creation of the metaverse: radical business model innovation or incremental transformation?" *International Journal of Entrepreneurial Behavior & Research*, 2022.
- [107] M. A. I. Mozumder, M. M. Sheeraz, A. Athar, S. Aich, and H.-C. Kim, "Overview: Technology roadmap of the future trend of metaverse based on iot, blockchain, ai technique, and medical domain metaverse activity," in *2022 24th International Conference on Advanced Communication Technology (ICACT)*, Feb. 2022, pp. 256–261.

- [108] J. Gong, T. Han, S. Guo, J. Li, S. Zha, L. Zhang, F. Tian, Q. Wang, and Y. Rui, "Holoboard: A large-format immersive teaching board based on pseudo holographics," in *The 34th Annual ACM Symposium on User Interface Software and Technology*, ser. UIST '21. New York, NY, USA: Association for Computing Machinery, 2021, pp. 441–456. [Online]. Available: <https://doi.org/10.1145/3472749.3474761>
- [109] H. Duan, J. Li, S. Fan, Z. Lin, X. Wu, and W. Cai, *Metaverse for Social Good: A University Campus Prototype*. New York, NY, USA: Association for Computing Machinery, 2021, pp. 153–161. [Online]. Available: <https://doi.org/10.1145/3474085.3479238>
- [110] K. M. Lewis, S. Varadharajan, and I. Kemelmacher-Shlizerman, "Vogue: Try-on by stylegan interpolation optimization," 2021.
- [111] Y. Xu, L. Zhu, L. Jiang, and Y. Yang, "Faster meta update strategy for noise-robust deep learning," in *Proceedings of the IEEE/CVF Conference on Computer Vision and Pattern Recognition (CVPR)*, June 2021, pp. 144–153.
- [112] Z. Liu, Y. Lin, Y. Cao, H. Hu, Y. Wei, Z. Zhang, S. Lin, and B. Guo, "Swin transformer: Hierarchical vision transformer using shifted windows," in *Proceedings of the IEEE/CVF International Conference on Computer Vision*, 2021, pp. 10012–10022.
- [113] S. Mystakidis, "Metaverse," *Encyclopedia*, vol. 2, no. 1, pp. 486–497, 2022.
- [114] L. David and L. S. Won, "Nft of nft: Is our imagination the only limitation of the metaverse?" *The Journal of The British Blockchain Association*, p. 36444, 2022.
- [115] Z. Wang, F. Mei, X. Xu, and E. Steinbach, "Towards subjective experience prediction for time-delayed teleoperation with haptic data reduction," in *IEEE International Conference on Robot & Human Interactive Communication (RO-MAN)*, 2022.
- [116] M. Strese, L. Bruder Mueller, J. Kirsch, and E. Steinbach, "Haptic material analysis and classification inspired by human exploratory procedures," *IEEE transactions on haptics*, vol. 13, no. 2, pp. 404–424, 2019.
- [117] L. O. Alpala, D. J. Quiroga-Parra, J. C. Torres, and D. H. Peluffo-Ordóñez, "Smart factory using virtual reality and online multi-user: Towards a metaverse for experimental frameworks," *Applied Sciences*, vol. 12, no. 12, p. 6258, 2022.
- [118] J.-M. Seigneur and M.-A. Choukou, "How should metaverse augment humans with disabilities?" in *13th Augmented Human International Conference Proceedings*. ACM, 2022.
- [119] M. Kaur and B. Gupta, "Metaverse technology and the current market," 2021.
- [120] Z. Bowen, X. Chao, L. Guangdi, and Y. Bo, "Metaverse application in power systems," *Power Generation Technology*, vol. 43, no. 1, p. 1, 2022.
- [121] S. Hollensen, P. Kotler, and M. O. Opresnik, "Metaverse—the new marketing universe," *Journal of Business Strategy*, 2022.
- [122] R. Madhavan, J. A. Kerr, A. R. Corcos, and B. P. Isaacoff, "Toward trustworthy and responsible artificial intelligence policy development," *IEEE Intelligent Systems*, vol. 35, no. 5, pp. 103–108, 2020.
- [123] K. Li, W. Ni, Y. Emami, and F. Dressler, "Data-driven flight control of internet-of-drones for sensor data aggregation using multi-agent deep reinforcement learning," *IEEE Wireless Communications*, vol. 29, no. 4, pp. 18–23, 2022.
- [124] A. B. Arrieta, N. Díaz-Rodríguez, J. Del Ser, A. Bennetot, S. Tabik, A. Barbado, S. García, S. Gil-López, D. Molina, R. Benjamins *et al.*, "Explainable artificial intelligence (xai): Concepts, taxonomies, opportunities and challenges toward responsible ai," *Information fusion*, vol. 58, pp. 82–115, 2020.
- [125] K. Werder, B. Ramesh, and R. Zhang, "Establishing data provenance for responsible artificial intelligence systems," *ACM Transactions on Management Information Systems (TMIS)*, vol. 13, no. 2, pp. 1–23, 2022.
- [126] K. Li, W. Ni, X. Yuan, A. Noor, and A. Jamalipour, "Deep graph-based reinforcement learning for joint cruise control and task offloading for aerial edge internet-of-things (edgeiot)," *IEEE Internet of Things Journal*, 2022.
- [127] O. R. Wear, R. Freeman, and D. M. Jacoby, "Responsible ai for conservation," *Nature Machine Intelligence*, vol. 1, no. 2, pp. 72–73, 2019.
- [128] T. Yigitcanlar, J. M. Corchado, R. Mehmood, R. Y. M. Li, K. Mosberger, and K. Desouza, "Responsible urban innovation with local government artificial intelligence (ai): A conceptual framework and research agenda," *Journal of Open Innovation: Technology, Market, and Complexity*, vol. 7, no. 1, p. 71, 2021.
- [129] S. Mohseni, N. Zarei, and E. D. Ragan, "A multidisciplinary survey and framework for design and evaluation of explainable ai systems," *ACM Transactions on Interactive Intelligent Systems (TiIS)*, vol. 11, no. 3-4, pp. 1–45, 2021.
- [130] J. Han and Y. Lee, "Explainable artificial intelligence-based competitive factor identification," *ACM Transactions on Knowledge Discovery from Data (TKDD)*, vol. 16, no. 1, pp. 1–11, 2021.
- [131] P. Kumar, Y. K. Dwivedi, and A. Anand, "Responsible artificial intelligence (ai) for value formation and market performance in healthcare: The mediating role of patient's cognitive engagement," *Information Systems Frontiers*, pp. 1–24, 2021.
- [132] H. Kurunathan, H. Huang, K. Li, W. Ni, and E. Hossain, "Machine learning-aided operations and communications of unmanned aerial vehicles: A contemporary survey," *arXiv preprint arXiv:2211.04324*, 2022.
- [133] I. Vourganas, V. Stankovic, and L. Stankovic, "Individualised responsible artificial intelligence for home-based rehabilitation," *Sensors*, vol. 21, no. 1, p. 2, 2020.
- [134] L. Cheng, K. R. Varshney, and H. Liu, "Socially responsible ai algorithms: issues, purposes, and challenges," *Journal of Artificial Intelligence Research*, vol. 71, pp. 1137–1181, 2021.
- [135] E. Khodabandehloo, D. Riboni, and A. Alimohammadi, "Healthxai: Collaborative and explainable ai for supporting early diagnosis of cognitive decline," *Future Generation Computer Systems*, vol. 116, pp. 168–189, 2021.
- [136] K. Li, W. Ni, and F. Dressler, "Lstm-characterized deep reinforcement learning for continuous flight control and resource allocation in uav-assisted sensor network," *IEEE Internet of Things Journal*, vol. 9, no. 6, pp. 4179–4189, 2021.
- [137] Y. Emami, B. Wei, K. Li, W. Ni, and E. Tovar, "Joint communication scheduling and velocity control in multi-uav-assisted sensor networks: A deep reinforcement learning approach," *IEEE Transactions on Vehicular Technology*, vol. 70, no. 10, pp. 10986–10998, 2021.
- [138] K. Li, W. Ni, A. Noor, and M. Guizani, "Employing intelligent aerial data aggregators for the internet of things: Challenges and solutions," *IEEE Internet of Things Magazine*, vol. 5, no. 1, pp. 136–141, 2022.
- [139] K. Li, W. Ni, J. Zheng, E. Tovar, and M. Guizani, "Confidentiality and timeliness of data dissemination in platoon-based vehicular cyber-physical systems," *IEEE Network*, vol. 35, no. 4, pp. 248–254, 2021.
- [140] M. S. Hossain, G. Muhammad, and N. Guizani, "Explainable ai and mass surveillance system-based healthcare framework to combat covid-19 like pandemics," *IEEE Network*, vol. 34, no. 4, pp. 126–132, 2020.
- [141] W. Guo, "Explainable artificial intelligence for 6g: Improving trust between human and machine," *IEEE Communications Magazine*, vol. 58, no. 6, pp. 39–45, 2020.
- [142] S. Wang, M. A. Qureshi, L. Miralles-Pechuaán, T. Huynh-The, T. R. Gadekallu, and M. Liyanage, "Explainable ai for b5g/6g: Technical aspects, use cases, and research challenges," *arXiv preprint arXiv:2112.04698*, 2021.
- [143] R. Burkhardt, N. Hohn, and C. Wigley, "Leading your organization to responsible AI," *McKinsey Analytics*, pp. 1–8, 2019.
- [144] A. Y. Al Hammadi, C. Y. Yeun, E. Damiani, P. D. Yoo, J. Hu, H. K. Yeun, and M.-S. Yim, "Explainable artificial intelligence to evaluate industrial internal security using eeg signals in iot framework," *Ad Hoc Networks*, vol. 123, p. 102641, 2021.
- [145] N. L. Tsakiridis, T. Diamantopoulos, A. L. Symeonidis, J. B. Theocharis, A. Iossifides, P. Chatzimisios, G. Pratos, and D. Kouvas, "Versatile internet of things for agriculture: an explainable ai approach," in *IFIP international conference on artificial intelligence applications and innovations*. Springer, 2020, pp. 180–191.
- [146] K. Li, N. Lu, P. Zhang, W. Ni, and E. Tovar, "Multi-drone assisted internet of things testbed based on bluetooth 5 communications," in *2020 19th ACM/IEEE International Conference on Information Processing in Sensor Networks (IPSN)*. IEEE, 2020, pp. 345–346.
- [147] Z. Zhao, Z. Ding, T. Q. Quek, and M. Peng, "Edge artificial intelligence in 6G systems: Theory, key techniques, and applications," *China Communications*, vol. 17, no. 8, pp. iii–iv, 2020.
- [148] Z. Lin, T. Lv, W. Ni, J. A. Zhang, and R. P. Liu, "Tensor-based multi-dimensional wideband channel estimation for mmwave hybrid cylindrical arrays," *IEEE Transactions on Communications*, vol. 68, no. 12, pp. 7608–7622, 2020.
- [149] T. Mir, M. Waqas, S. Tu, C. Fang, W. Ni, R. Mackenzie, X. Xue, and Z. Han, "Relay hybrid precoding in uav-assisted wideband

- millimeter-wave massive mimo system," *IEEE Transactions on Wireless Communications*, 2022.
- [150] Y. Ma, Y. Niu, Z. Han, B. Ai, K. Li, Z. Zhong, and N. Wang, "Robust transmission scheduling for uav-assisted millimeter-wave train-ground communication system," *IEEE Transactions on Vehicular Technology*, 2022.
- [151] C. Xiao, J. Zeng, W. Ni, X. Su, R. P. Liu, T. Lv, and J. Wang, "Downlink mimo-noma for ultra-reliable low-latency communications," *IEEE Journal on Selected Areas in Communications*, vol. 37, no. 4, pp. 780–794, 2019.
- [152] J. Zeng, T. Lv, W. Ni, R. P. Liu, N. C. Beaulieu, and Y. J. Guo, "Ensuring max–min fairness of ul simo-noma: A rate splitting approach," *IEEE Transactions on Vehicular Technology*, vol. 68, no. 11, pp. 11 080–11 093, 2019.
- [153] S. Wang, T. Lv, W. Ni, N. C. Beaulieu, and Y. J. Guo, "Joint resource management for mc-noma: A deep reinforcement learning approach," *IEEE Transactions on Wireless Communications*, vol. 20, no. 9, pp. 5672–5688, 2021.
- [154] B. Krogfoss, J. Duran, P. Perez, and J. Bouwen, "Quantifying the value of 5G and edge cloud on QoE for AR/VR," in *International Conference on Quality of Multimedia Experience (QoMEX)*. IEEE, 2020, pp. 1–4.
- [155] M. Giordani, M. Polese, M. Mezzavilla, S. Rangan, and M. Zorzi, "Toward 6G networks: Use cases and technologies," *IEEE Communications Magazine*, vol. 58, no. 3, pp. 55–61, 2020.
- [156] X. Chen, Z. Feng, Z. Wei, P. Zhang, and X. Yuan, "Code-division ofdm joint communication and sensing system for 6g machine-type communication," *IEEE Internet of Things Journal*, vol. 8, no. 15, pp. 12 093–12 105, 2021.
- [157] Y. Liu, M. Peng, G. Shou, Y. Chen, and S. Chen, "Toward edge intelligence: multiaccess edge computing for 5G and internet of things," *IEEE Internet of Things Journal*, vol. 7, no. 8, pp. 6722–6747, 2020.
- [158] S. Liao, J. Wu, J. Li, and K. Konstantin, "Information-centric massive IoT-based ubiquitous connected VR/AR in 6G: A proposed caching consensus approach," *IEEE Internet of Things Journal*, vol. 8, no. 7, pp. 5172–5184, 2020.
- [159] S. Zhang, J. Liu, H. Guo, M. Qi, and N. Kato, "Envisioning device-to-device communications in 6G," *IEEE Network*, vol. 34, no. 3, pp. 86–91, 2020.
- [160] S. Sun, T. S. Rappaport, M. Shafi, P. Tang, J. Zhang, and P. J. Smith, "Propagation models and performance evaluation for 5G millimeter-wave bands," *IEEE Transactions on Vehicular Technology*, vol. 67, no. 9, pp. 8422–8439, 2018.
- [161] A. Prabhakara, V. Singh, S. Kumar, and A. Rowe, "Osprey: A mmwave approach to tire wear sensing," in *Proceedings of the 18th International Conference on Mobile Systems, Applications, and Services*, 2020, pp. 28–41.
- [162] J. Zhang, X. Ge, Q. Li, M. Guizani, and Y. Zhang, "5G millimeter-wave antenna array: Design and challenges," *IEEE Wireless communications*, vol. 24, no. 2, pp. 106–112, 2016.
- [163] S. Kusaladharma, W.-P. Zhu, W. Ajib, and G. A. A. Baduge, "Achievable rate characterization of NOMA-aided cell-free massive mimo with imperfect successive interference cancellation," *IEEE Transactions on Communications*, vol. 69, no. 5, pp. 3054–3066, 2021.
- [164] O. Maraqa, A. S. Rajasekaran, S. Al-Ahmadi, H. Yanikomeroglu, and S. M. Sait, "A survey of rate-optimal power domain NOMA with enabling technologies of future wireless networks," *IEEE Communications Surveys & Tutorials*, vol. 22, no. 4, pp. 2192–2235, 2020.
- [165] L. Han, R. Liu, Z. Wang, X. Yue, and J. S. Thompson, "Millimeter-wave MIMO-NOMA-based positioning system for internet-of-things applications," *IEEE Internet of Things Journal*, vol. 7, no. 11, pp. 11 068–11 077, 2020.
- [166] M. T. Mamaghani and Y. Hong, "Aerial intelligent reflecting surface enabled terahertz covert communications in beyond-5g internet of things," *IEEE Internet of Things Journal*, 2022.
- [167] C. Deng, X. Fang, X. Han, X. Wang, L. Yan, R. He, Y. Long, and Y. Guo, "IEEE 802.11 be wi-fi 7: New challenges and opportunities," *IEEE Communications Surveys & Tutorials*, vol. 22, no. 4, pp. 2136–2166, 2020.
- [168] M. Ashjaei, L. L. Bello, M. Daneshmand, G. Patti, S. Saponara, and S. Mubeen, "Time-sensitive networking in automotive embedded systems: State of the art and research opportunities," *Journal of systems architecture*, vol. 117, p. 102137, 2021.
- [169] E. Uysal, O. Kaya, A. Ephremides, J. Gross, M. Codreanu, P. Popovski, M. Assaad, G. Liva, A. Munari, B. Soret et al., "Semantic communications in networked systems: A data significance perspective," *IEEE Network*, vol. 36, no. 4, pp. 233–240, 2022.
- [170] W.-F. Alliance, "Wi-fi certified 6," Tech. Rep. vol. 10, p. 2020, August 2019.
- [171] —, "Wi-fi 6e expands wi-fi into 6 ghz," *White Paper*, 2020.
- [172] R. P. F. Hoefel, "LLR metrics for 4096-QAM soft-decision: Implementation in IEEE 802.11 be (wi-fi 7)," in *IEEE Latin-American Conference on Communications (LATINCOM)*. IEEE, 2021, pp. 1–6.
- [173] H. Brunner, M. Stocker, M. Schuh, M. Schuß, C. A. Boano, and K. Römer, "Understanding and mitigating the impact of wi-fi 6E interference on ultra-wideband communications and ranging," in *ACM/IEEE International Conference on Information Processing in Sensor Networks (IPSN)*. IEEE, 2022, pp. 92–104.
- [174] P. Pop, M. L. Raagaard, M. Gutierrez, and W. Steiner, "Enabling fog computing for industrial automation through time-sensitive networking (TSN)," *IEEE Communications Standards Magazine*, vol. 2, no. 2, pp. 55–61, 2018.
- [175] P. M. Rost and T. Kolding, "Performance of integrated 3GPP 5G and IEEE TSN networks," *IEEE Communications Standards Magazine*, vol. 6, no. 2, pp. 51–56, 2022.
- [176] K. Chang, W. Cho, B.-J. Kwak, and Y.-J. Ko, "Synchronization under hardware impairments in over-6ghz wireless industrial iot systems," *IEEE Internet of Things Journal*, 2022.
- [177] A. Gyrard, C. Bonnet, and K. Boudaoud, "Enrich machine-to-machine data with semantic web technologies for cross-domain applications," in *IEEE world forum on internet of things (WF-IoT)*. IEEE, 2014, pp. 559–564.
- [178] W. C. Ng, H. Du, W. Y. B. Lim, Z. Xiong, D. Niyato, and C. Miao, "Stochastic resource allocation for semantic communication-aided virtual transportation networks in the metaverse," *arXiv preprint arXiv:2208.14661*, 2022.
- [179] J. Dai, Z. Zhang, S. Mao, and D. Liu, "A view synthesis-based 360 vr caching system over mec-enabled c-ran," *IEEE Transactions on Circuits and Systems for Video Technology*, vol. 30, no. 10, pp. 3843–3855, 2019.
- [180] (2020, July) Samsung's 6g white paper. [Online]. Available: <https://research.samsung.com/next-generation-communications>
- [181] S. Gupta, J. Chakareski, and P. Popovski, "Millimeter wave meets edge computing for mobile vr with high-fidelity 8k scalable 360 video," in *IEEE International Workshop on Multimedia Signal Processing (MMSp)*. IEEE, 2019, pp. 1–6.
- [182] H.-Y. Chen, R.-T. Hsu, Y.-C. Chen, W.-C. Hsu, and P. Huang, "Ar game traffic characterization: a case of pokémon go in a flash crowd event," in *Proceedings of the 19th Annual International Conference on Mobile Systems, Applications, and Services*, 2021, pp. 493–494.
- [183] J. Zheng, K. Li, N. Mhaisen, W. Ni, E. Tovar, and M. Guizani, "Exploring deep reinforcement learning-assisted federated learning for online resource allocation in privacy-preserving edgeiot," *IEEE Internet of Things Journal*, 2022.
- [184] Q. Yang, Y. Liu, T. Chen, and Y. Tong, "Federated machine learning: Concept and applications," *ACM Transactions on Intelligent Systems and Technology (TIST)*, vol. 10, no. 2, pp. 1–19, 2019.
- [185] W. Zhang, J. Chen, Y. Zhang, and D. Raychaudhuri, "Towards efficient edge cloud augmentation for virtual reality mmogs," in *Proceedings of the Second ACM/IEEE Symposium on Edge Computing*, 2017, pp. 1–14.
- [186] J. Zheng, K. Li, E. Tovar, and M. Guizani, "Federated learning for energy-balanced client selection in mobile edge computing," in *2021 International Wireless Communications and Mobile Computing (IWCMC)*. IEEE, 2021, pp. 1942–1947.
- [187] S. Tuli, G. Casale, and N. Jennings, "Mcds: Ai augmented workflow scheduling in mobile edge cloud computing systems," *IEEE Transactions on Parallel and Distributed Systems*, 2021.
- [188] R. Sitters, "The minimum latency problem is NP-hard for weighted trees," in *International conference on integer programming and combinatorial optimization*. Springer, 2002, pp. 230–239.
- [189] N. Zhang, K. Zheng, and M. Tao, "Using grouped linear prediction and accelerated reinforcement learning for online content caching," in *IEEE International Conference on Communications Workshops (ICC Workshops)*. IEEE, 2018, pp. 1–6.
- [190] S. Chilukuri and D. Pesch, "Achieving optimal cache utility in constrained wireless networks through federated learning," in *IEEE International Symposium on a World of Wireless, Mobile and Multimedia Networks (WoWMoM)*. IEEE, 2020, pp. 254–263.

- [191] Z. Gu, H. Lu, P. Hong, and Y. Zhang, "Reliability enhancement for vr delivery in mobile-edge empowered dual-connectivity sub-6 ghz and mmwave hetnets," *IEEE Transactions on Wireless Communications*, 2021.
- [192] Y. Liu, J. Liu, A. Argyriou, and S. Ci, "Mec-assisted panoramic vr video streaming over millimeter wave mobile networks," *IEEE Transactions on Multimedia*, vol. 21, no. 5, pp. 1302–1316, 2018.
- [193] F. Tao, H. Zhang, A. Liu, and A. Y. C. Nee, "Digital twin in industry: State-of-the-art," *IEEE Transactions on Industrial Informatics*, vol. 15, no. 4, pp. 2405–2415, 2019.
- [194] D. Chen, D. Wang, Y. Zhu, and Z. Han, "Digital twin for federated analytics using a bayesian approach," *IEEE Internet of Things Journal*, vol. 8, no. 22, pp. 16 301–16 312, 2021.
- [195] M. M. Rathore, S. A. Shah, D. Shukla, E. Bentafat, and S. Bakiras, "The role of ai, machine learning, and big data in digital twinning: A systematic literature review, challenges, and opportunities," *IEEE Access*, vol. 9, pp. 32 030–32 052, 2021.
- [196] D. Gelernter, *Mirror Worlds: or the Day Software Puts the Universe in a Shoebox...How It Will Happen and What It Will Mean*. Oxford University Press, January 1993.
- [197] [Online]. Available: <https://www.fortunebusinessinsights.com/digital-twin-market-106246>
- [198] [Online]. Available: <https://metaverseinsider.tech/2022/03/22/nvidia-announces-new-technology-for-digital-twin-simulation-and-communications-within-the-metaverse/>
- [199] [Online]. Available: <https://www.leewayhertz.com/digital-twin/>
- [200] J. Bao, D. Guo, J. Li, and J. Zhang, "The modelling and operations for the digital twin in the context of manufacturing," *Enterprise Information Systems*, vol. 13, no. 4, pp. 534–556, 2019. [Online]. Available: <https://doi.org/10.1080/17517575.2018.1526324>
- [201] L. Deren, Y. Wenbo, and S. Zhenfeng, "Smart city based on digital twins," *Computational Urban Science*, vol. 1, no. 1, p. 4, Mar. 2021. [Online]. Available: <https://doi.org/10.1007/s43762-021-00005-y>
- [202] K. Li, W. Ni, B. Wei, and M. Guizani, "An experimental study of two-way ranging optimization in uwb-based simultaneous localization and wall-mapping systems," in *2022 International Wireless Communications and Mobile Computing (IWCMC)*. IEEE, 2022, pp. 871–876.
- [203] K. Li, W. Ni, and P. Zhang, "Poster: An experimental localization testbed based on uwb channel impulse response measurements," in *2022 21st ACM/IEEE International Conference on Information Processing in Sensor Networks (IPSN)*. IEEE, 2022, pp. 515–516.
- [204] A. Fuller, Z. Fan, C. Day, and C. Barlow, "Digital twin: Enabling technologies, challenges and open research," *IEEE Access*, vol. 8, pp. 108 952–108 971, 2020.
- [205] M. Kapteyn, D. Knezevic, D. Huynh, M. Tran, and K. Willcox, "Data-driven physics-based digital twins via a library of component-based reduced-order models," vol. 123, no. 13, pp. 2986–3003, eprint: <https://onlinelibrary.wiley.com/doi/pdf/10.1002/nme.6423>. [Online]. Available: <https://onlinelibrary.wiley.com/doi/abs/10.1002/nme.6423>
- [206] Y. Ma, S. Zhao, and B. Huang, "Multiple-model state estimation based on variational bayesian inference," *IEEE Transactions on Automatic Control*, vol. 64, no. 4, pp. 1679–1685, 2018.
- [207] [Online]. Available: <https://techcommunity.microsoft.com/t5/internet-of-things-blog/visualizing-azure-digital-twins-in-3d/ba-p/2898159>
- [208] V. Kamath, J. Morgan, and M. I. Ali, "Industrial IoT and digital twins for a smart factory: An open source toolkit for application design and benchmarking," in *Global Internet of Things Summit (GloTS)*. IEEE, 2020, pp. 1–6.
- [209] M. Schluse, M. Priggemeyer, L. Atorf, and J. Rossmann, "Experimentable digital twins—streamlining simulation-based systems engineering for industry 4.0," *IEEE Transactions on industrial informatics*, vol. 14, no. 4, pp. 1722–1731, 2018.
- [210] [Online]. Available: <https://www.gehccommandcenter.com/>
- [211] A. Rudskoy, I. Ilin, and A. Prokhorov, "Digital twins in the intelligent transport systems," *Transportation Research Procedia*, vol. 54, pp. 927–935, 2021, international Scientific Siberian Transport Forum - TransSiberia 2020. [Online]. Available: <https://www.sciencedirect.com/science/article/pii/S235214652100332X>
- [212] K. Shoji, S. Schudel, C. Shrivastava, D. Onwude, and T. Defraeye, "Optimizing the postharvest supply chain of imported fresh produce with physics-based digital twins," vol. 329. [Online]. Available: <https://www.sciencedirect.com/science/article/pii/S0260877422001315>
- [213] Y. Wang, X. Wang, and A. Liu, "Digital twin-driven supply chain planning," *Procedia CIRP*, vol. 93, pp. 198–203, 2020, 53rd CIRP Conference on Manufacturing Systems 2020. [Online]. Available: <https://www.sciencedirect.com/science/article/pii/S2212827120310337>
- [214] A. Croatti, M. Gabellini, S. Montagna, and A. Ricci, "On the integration of agents and digital twins in healthcare," vol. 44, no. 9, p. 161. [Online]. Available: <https://doi.org/10.1007/s10916-020-01623-5>
- [215] Q. Wang, W. Jiao, P. Wang, and Y. Zhang, "Digital twin for human-robot interactive welding and welder behavior analysis," *IEEE/CAA Journal of Automatica Sinica*, vol. 8, no. 2, pp. 334–343, 2021.
- [216] H. Elayan, M. Aloqaily, and M. Guizani, "Digital twin for intelligent context-aware iot healthcare systems," *IEEE Internet of Things Journal*, vol. 8, no. 23, pp. 16 749–16 757, 2021.
- [217] A. Ghandar, A. Ahmed, S. Zulfikar, Z. Hua, M. Hanai, and G. Theodoropoulos, "A decision support system for urban agriculture using digital twin: A case study with aquaponics," *IEEE Access*, vol. 9, pp. 35 691–35 708, 2021.
- [218] B. Schleich, N. Anwer, L. Mathieu, and S. Wartzack, "Shaping the digital twin for design and production engineering," *CIRP Annals*, vol. 66, no. 1, pp. 141–144, 2017. [Online]. Available: <https://www.sciencedirect.com/science/article/pii/S0007850617300409>
- [219] S. Boschert and R. Rosen, "Digital Twin—The Simulation Aspect," in *Mechatronic Futures: Challenges and Solutions for Mechatronic Systems and their Designers*, P. Hehenberger and D. Bradley, Eds. Cham: Springer International Publishing, 2016, pp. 59–74.
- [220] Y. K. Dwivedi, L. Hughes, A. M. Baabdullah, S. Ribeiro-Navarrete, M. Giannakis, M. M. Al-Debei, D. Dennehy, B. Metri, D. Buhalis, C. M. Cheung *et al.*, "Metaverse beyond the hype: Multidisciplinary perspectives on emerging challenges, opportunities, and agenda for research, practice and policy," *International Journal of Information Management*, vol. 66, p. 102542, 2022.
- [221] T. Gabor, L. Belzner, M. Kiermeier, M. T. Beck, and A. Neitz, "A simulation-based architecture for smart cyber-physical systems," in *IEEE international conference on autonomic computing (ICAC)*. IEEE, 2016, pp. 374–379.
- [222] R. S. Kenett and J. Bortman, "The digital twin in industry 4.0: A wide-angle perspective," vol. 38, no. 3, pp. 1357–1366, eprint: <https://onlinelibrary.wiley.com/doi/pdf/10.1002/qre.2948>. [Online]. Available: <https://onlinelibrary.wiley.com/doi/abs/10.1002/qre.2948>
- [223] Y. Jiang, S. Yin, K. Li, H. Luo, and O. Kaynak, "Industrial applications of digital twins," vol. 379, no. 2207, p. 20200360, publisher: Royal Society. [Online]. Available: <https://royalsocietypublishing.org/doi/full/10.1098/rsta.2020.0360>
- [224] A. K. Ghosh, A. S. Ullah, R. Teti, and A. Kubo, "Developing sensor signal-based digital twins for intelligent machine tools," vol. 24, p. 100242. [Online]. Available: <https://www.sciencedirect.com/science/article/pii/S2452414X21000418>
- [225] F. Tao, H. Zhang, A. Liu, and A. Y. C. Nee, "Digital twin in industry: State-of-the-art," *IEEE Transactions on Industrial Informatics*, vol. 15, no. 4, pp. 2405–2415, 2019.
- [226] K. Li, W. Ni, E. Tovar, and M. Guizani, "Optimal rate-adaptive data dissemination in vehicular platoons," *IEEE Transactions on Intelligent Transportation Systems*, vol. 21, no. 10, pp. 4241–4251, 2019.
- [227] K. Li, L. Lu, W. Ni, E. Tovar, and M. Guizani, "Secret key agreement for data dissemination in vehicular platoons," *IEEE Transactions on Vehicular Technology*, vol. 68, no. 9, pp. 9060–9073, 2019.
- [228] K. Li, R. C. Voicu, S. S. Kanhere, W. Ni, and E. Tovar, "Energy efficient legitimate wireless surveillance of uav communications," *IEEE Transactions on Vehicular Technology*, vol. 68, no. 3, pp. 2283–2293, 2019.
- [229] K. Li, W. Ni, M. Abolhasan, and E. Tovar, "Reinforcement learning for scheduling wireless powered sensor communications," *IEEE Transactions on Green Communications and Networking*, vol. 3, no. 2, pp. 264–274, 2018.
- [230] K. Li, C. Yuen, B. Kusy, R. Jurdak, A. Ignjatovic, S. S. Kanhere, and S. Jha, "Fair scheduling for data collection in mobile sensor networks with energy harvesting," *IEEE Transactions on Mobile Computing*, vol. 18, no. 6, pp. 1274–1287, 2018.
- [231] S. Shekhar, S. K. Feiner, and W. G. Aref, "Spatial computing," *Communications of the ACM*, vol. 59, no. 1, pp. 72–81, 2015.
- [232] S. Greenwold, "Spatial computing," *Massachusetts Institute of Technology, Master*, 2003.
- [233] Z. Liu, N. Meyendorf, and N. Mrad, "The role of data fusion in predictive maintenance using digital twin," vol. 1949, no. 1, p. 020023, publisher: American Institute of Physics. [Online]. Available: <https://aip.scitation.org/doi/abs/10.1063/1.5031520>

- [234] K. Li, N. Lu, J. Zheng, P. Zhang, W. Ni, and E. Tovar, "Bluetooth: A secure aerial relay system using bluetooth connected autonomous drones," *ACM Transactions on Cyber-Physical Systems*, vol. 5, no. 3, pp. 1–22, 2021.
- [235] K. Li, W. Ni, Y. Emami, Y. Shen, R. Severino, D. Pereira, and E. Tovar, "Design and implementation of secret key agreement for platoon-based vehicular cyber-physical systems," *ACM Transactions on Cyber-Physical Systems*, vol. 4, no. 2, pp. 1–20, 2019.
- [236] K. Li, W. Ni, E. Tovar, and A. Jamalipour, "Online velocity control and data capture of drones for the internet of things: An onboard deep reinforcement learning approach," *IEEE Vehicular Technology Magazine*, vol. 16, no. 1, pp. 49–56, 2020.
- [237] W. Y. B. Lim, Z. Xiong, D. Niyato, X. Cao, C. Miao, S. Sun, and Q. Yang, "Realizing the metaverse with edge intelligence: A match made in heaven," arXiv:2201.01634. [Online]. Available: <http://arxiv.org/abs/2201.01634>
- [238] K. Li, W. Ni, and F. Dressler, "Continuous maneuver control and data capture scheduling of autonomous drone in wireless sensor networks," *IEEE Transactions on Mobile Computing*, 2021.
- [239] A. Kuppa and N.-A. Le-Khac, "Black box attacks on explainable artificial intelligence (XAI) methods in cyber security," in *International Joint Conference on Neural Networks (IJCNN)*. IEEE, 2020, pp. 1–8.
- [240] Y. Cai, J. Llorca, A. M. Tulino, and A. F. Molisch, "Compute-and data-intensive networks: The key to the metaverse," *arXiv preprint arXiv:2204.02001*, 2022.
- [241] K. Menhaji, S. Holtzman, B. Roser, A. Hardart, and K. T. Chen, "Systematic review of pelvic anatomy ios and android applications for obstetricians and gynecologists," *Female Pelvic Medicine & Reconstructive Surgery*, pp. 10–1097, 2022.
- [242] Y. Bian, J. Leng, and J. L. Zhao, "Demystifying metaverse as a new paradigm of enterprise digitization," in *International Conference on Big Data*. Springer, 2021, pp. 109–119.
- [243] S. Dhelim, T. Kechadi, L. Chen, N. Aung, H. Ning, and L. Atzori, "Edge-enabled metaverse: The convergence of metaverse and mobile edge computing," *arXiv preprint arXiv:2205.02764*, 2022.
- [244] M. H. Alsharif, A. H. Kelechi, M. A. Albreem, S. A. Chaudhry, M. S. Zia, and S. Kim, "Sixth generation (6g) wireless networks: Vision, research activities, challenges and potential solutions," *Symmetry*, vol. 12, no. 4, p. 676, 2020.
- [245] D.-I. D. Han, Y. Bergs, and N. Moorhouse, "Virtual reality consumer experience escapes: preparing for the metaverse," *Virtual Reality*, pp. 1–16, 2022.
- [246] T. R. Gadekallu, T. Huynh-The, W. Wang, G. Yenduri, P. Ranaweera, Q.-V. Pham, D. B. da Costa, and M. Liyanage, "Blockchain for the metaverse: A review," *arXiv preprint arXiv:2203.09738*, 2022.
- [247] J. Huang, P. Sun, and W. Zhang, "Analysis of the future prospects for the metaverse," in *Proceedings of the 2022 7th International Conference on Financial Innovation and Economic Development (ICFIED 2022)*. Atlantis Press, 2022, pp. 1899–1904. [Online]. Available: <https://doi.org/10.2991/aebmr.k.220307.312>
- [248] T. Braud, C. B. Fernandez, and P. Hui, "Scaling-up ar: University campus as a physical-digital metaverse," in *2022 IEEE Conference on Virtual Reality and 3D User Interfaces Abstracts and Workshops (VRW)*, 2022, pp. 169–175.
- [249] D. KIM, "Meta and the metaverse," *Institutional Knowledge at Singapore Management University*, vol. 4, 2022.
- [250] H. Zhu, "Metaonce: A metaverse framework based on multi-scene relations and entity-relation-event game," *arXiv preprint arXiv:2203.10424*, 2022.
- [251] R. Cheng, N. Wu, S. Chen, and B. Han, "Will metaverse be nextg internet? vision, hype, and reality," *arXiv preprint arXiv:2201.12894*, 2022.