

Automation
 Simplified...



Solenoid Valve

Angle Seat Valve

Rotary Coupling

Pneumatic Directional Control Valve

Actuator

Cylinder

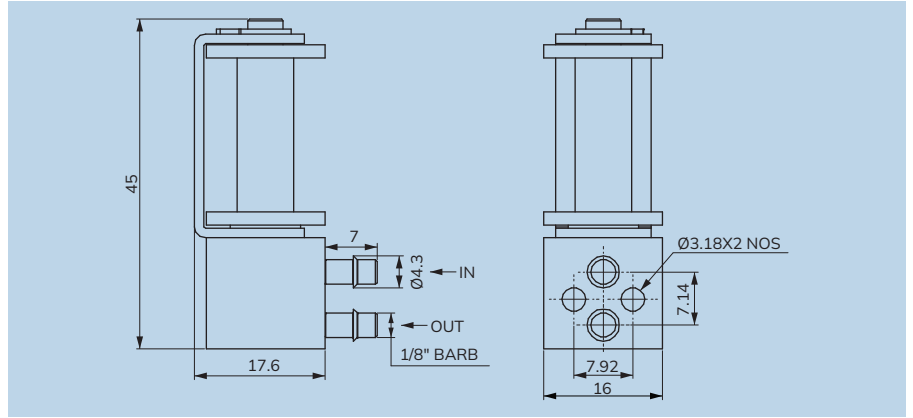
One Touch Fitting

Ball Valve

Butterfly Valve

Country of Origin - INDIA





Specifications

Valve Type:	2 Way Normally Closed Proportional Valve
Port:	1/8" BARB, Manifold Mounting
Body Material:	Brass
Seal:	NBR Optional FKM, Viton
Media:	Air, Oxygen, Nitrous Oxide, Carbon Dioxide, Heliox & Other Medical Gases
Main Features :	Flow adjustment, Opening time adjustment, Quick release initial flow adjustment
LPM:	6LPM @ 10PSI Differential Pressure
Operating Environment:	32°F to 132°F (0°C to 55°C)
Storage Temperature:	-40°F to 158°F (-40°C to 70°C)
Dimensions:	L-17.6mm, W-16mm, H-45mm
Weight:	58g
Power:	9V DC (2 Watts)
Electric Termination:	15" Lead Wire
Stem Base:	Stainless steel
All Others:	NBR/FKM, Stainless Steel, Aluminium(Manifold)

Features

- Low power consumption generates less heat
- Proven performance tested to 100 million life cycles
- Uses either DC current or pulse width modulation with closed loop feedback to deliver optimal system performance.

Applications

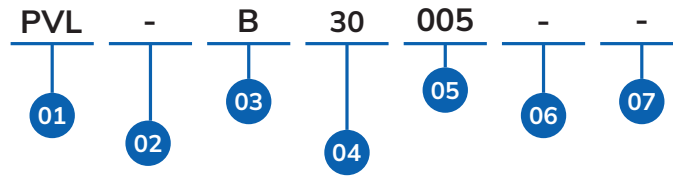
- Ventilators
- Anesthesia Delivery & Monitors
- Insufflators
- Pressure and Flow Control

Performance Characteristics

Leak Rate:	<0.2 sccm of helium (bubble tight)
Hysteresis:	25% of full scale current (Max)
Response time:	10ms Typical
Reliability:	100 Million Cycles, 0.95 Reliability Factor, 95% Confidence Interval

NOTE: Contact for customized configuration: eg custom calibration and electrical connections.

PVL- SERIES PROPORTIONAL (LOW) FLOW CONTROL SOLENOID VALVE MODEL CHART



01	SERIES
	PVL

02	PRODUCT TYPE
-	Proportional Valve

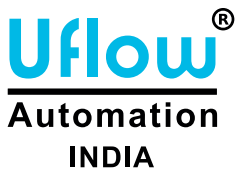
03	PORT SIZE
M	Manifold Mounted
B	1/8" Barb

04	PRESSURE RANGE
30	30 PSI
10	10 PSI

05	LPM
008	8 LPM
015	15 LPM
005	5 LPM
001	1 LPM

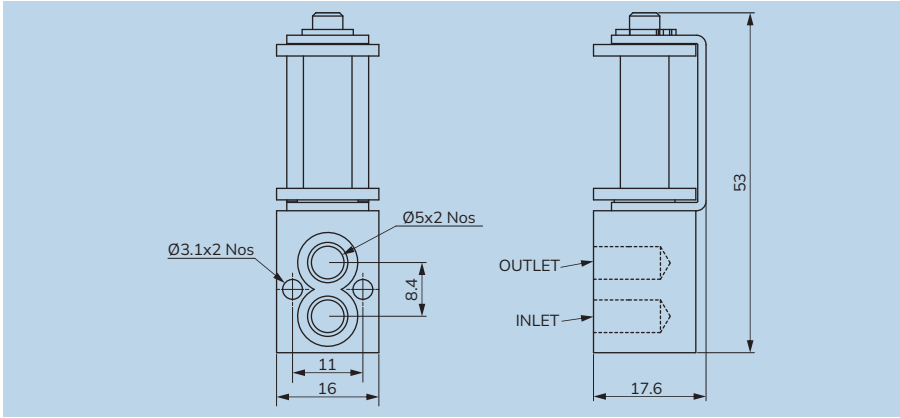
06	CONFIGURATION
-	Regular
C1	CONFIG 1
C2	CONFIG 2
C3	CONFIG 3
⋮	⋮
C9	CONFIG 9
CA	CONFIG 10
CB	CONFIG 11

07	VERSION
-	VERSION 0
V1	VERSION 1
V2	VERSION 2
V3	VERSION 3
⋮	⋮
V9	VERSION 9
VA	VERSION 10
VB	VERSION 11



PVL-B30005
1/8" BARB PROPORTIONAL VALVE BRASS-VITON-30 PSI-5 LPM

Note : The above chart is for identification purposes only, and it may not be possible to make all combinations for the above chart.



Specifications

Valve Type:	2 Way Normally Closed Proportional Valve
Port:	Manifold Mounting
Body Material:	Brass
Seal:	Silicon
Media:	Air, Oxygen, Nitrous Oxide, Carbon Dioxide, Heliox & Other Medical Gases
LPM:	150LPM @ 35PSI Differential Pressure
Operating Environment:	32 °F to 132 °F (0 °C to 55 °C)
Storage Temperature:	-40 °F to 158 °F (-40 °C to 70 °C)
Dimensions:	L-17.6mm, W-16mm, H-53mm
Weight:	56g
Power:	12V DC (2.5 Watts)
Electric Termination:	15" Lead Wire
Stem Base:	Stainless steel
All Others:	Silicon, VITON, Stainless Steel, Aluminium(Manifold)

Features

- Low power consumption generates less heat
- Proven performance tested to 100 million life cycles
- Uses either DC current or pulse width modulation with closed loop feedback to deliver optimal system performance.

Applications

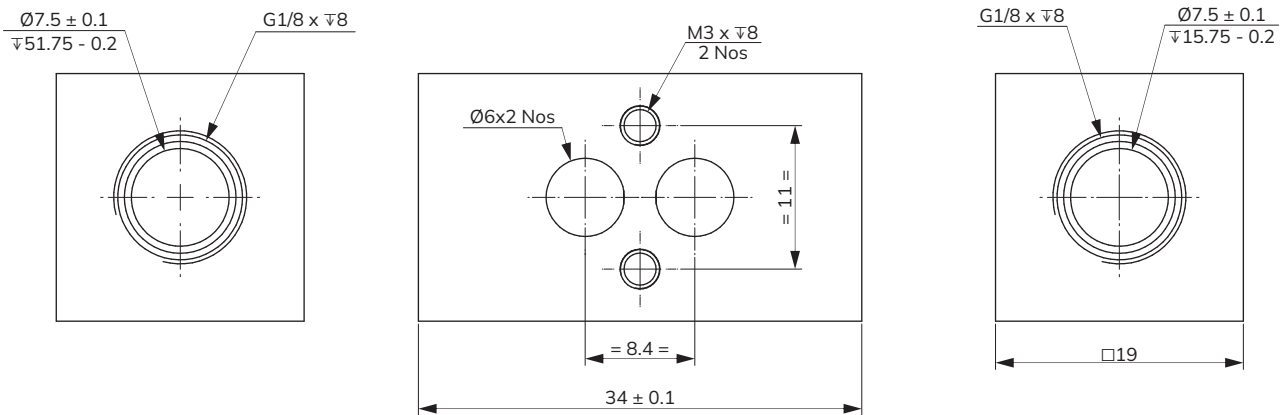
- Ventilators
- Anesthesia Delivery & Monitors
- Insufflators
- Pressure and Flow Control

Performance Characteristics

Leak Rate:	The leakage shall not exceed the following values: Internal: 5.0 sccm of Air up to 101 psi (7 bar) External: 0.5 sccm of Air up to 101 psi (7 bar)
Hysteresis:	25% of full scale current (Max)
Response time:	10ms Typical
Reliability:	100 Million Cycles, 0.95 Reliability Factor, 95% Confidence Interval

NOTE: Contact for customized configuration: eg custom calibration and electrical connections.

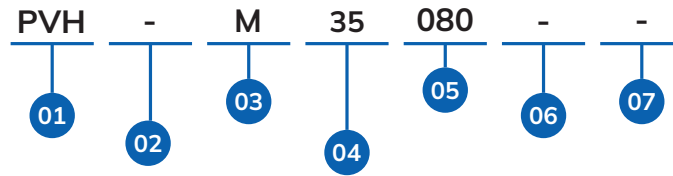
Manifold Dimensions



NOTE: In order to provide the best possible solution for your application, please provide the following requirements when contacting Applications Engineering:

- Media, Inlet & Outlet Pressures
- System Supply Voltage
- Minimum Required Flow Rate
- Media & Ambient Temperature Range

PVH- SERIES PROPORTIONAL (HIGH) FLOW CONTROL SOLENOID VALVE MODEL CHART



01	SERIES
	PVH

02	PRODUCT TYPE
-	Proportional Valve

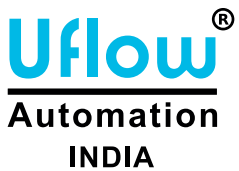
03	PORT SIZE
M	Manifold Mounted
B	1/8" Barb

04	PRESSURE RANGE
45	45 PSI
35	35 PSI
60	60 PSI
30	30 PSI

05	LPM
150	150 LPM
080	080 LPM

06	CONFIGURATION
-	Regular
C1	CONFIG 1
C2	CONFIG 2
C3	CONFIG 3
⋮	⋮
C9	CONFIG 9
CA	CONFIG 10
CB	CONFIG 11

07	VERSION
-	VERSION 0
V1	VERSION 1
V2	VERSION 2
V3	VERSION 3
⋮	⋮
V9	VERSION 9
VA	VERSION 10
VB	VERSION 11



PVH-M35080
 MANIFOLD MOUNTED PROPORTIONAL VALVE BRASS-VITON-
 35 PSI-80 LPM

Note : The above chart is for identification purposes only, and it may not be possible to make all combinations for the above chart.

Global Presence...



Made In India



CONTACT US:

For Domestic Inquiry

✉ sales@uflowvalve.com 📞 +91 85110 98822 🌐 www.uflowvalve.com

For Export Inquiry

✉ export@uflowvalve.com 📞 +91 99744 77370 📞 +91 78018 09550

📍 Uflow Automation, Ankur Industrial Complex, Survey No: 275/276, Plot No: 31, Nr. Intol Cast Pvt. Ltd. Shapar(Veraval) Dist.: Gujarat (India) - 360 024.