

Automation
Simplified...



Solenoid Valve

Angle Seat Valve

Rotary Coupling

Pneumatic Directional Control Valve

Actuator

Cylinder

One Touch Fitting

Ball Valve

Butterfly Valve

Country of Origin - INDIA



Model Information

Type:	Solenoid Operated, Lever Operated, Pilot Air Operated, Push Pull (3X2-NC / NO, 5X2, 5X3)
Design:	Spool Type & Cartridge Type (DCC Series)
Media:	Compressed Air (Filtered & Lubricated)
Working Pressure Range:	2 - 10 Bar for Solenoid Valve 0 - 10 Bar for Manual Valve & Air Pilot Valve
Ambient / Media Temperature:	5°C - 60°C
Materials of Construction:	Aluminium, Nitrile, Brass, Polymer

Coil Information

Coil Width :	26 mm
Coil Bore :	10 mm
Voltage (V) ± 10% :	AC (50Hz, 60Hz) - 24V, 110V, 230V DC 12V, 24V, 36V, 48V, 110V
Power Consumption :	AC-6W, DC-6W
Duty Cycle :	Continuous
Class of Insulation :	Class H
Type of Coil Protection :	IP65
Coil Housing :	Epoxy Square Coil

FEATURES

- Cartridge Type Design For Long Life
- Compact Design
- Standard NAMUR Mounting
- 1 Million Cycle Tested
- Low Power Consumption
- Manual Override
- Lubrication Not Essential
- Wide Range Of Coil Voltage

3X2, 5X2 Single solenoid valve with spring return



1 - Input, 2/4 - Output, 3/5 - Exhaust

Model No.	Flow (at 6 Bar)	Port Size			Function	Symbol
		In	Out	Exh		
DCC-B1V1	1200 LPM	¼"	¼"	¼"	Spring Return (NC)	
DCC-A1V1	1200 LPM	¼"	¼"	¼"	Spring Return (NO)	
DCC-D1V1	1200 LPM	¼"	¼"	⅝"	Spring Return	
DCC-B2V1	3500 LPM	½"	½"	½"	Spring Return (NC)	
DCC-A2V1	3500 LPM	½"	½"	½"	Spring Return (NO)	
DCC-D2V1	3500 LPM	½"	½"	½"	Spring Return	

3X2, 5X2 Double solenoid valve



1 - Input, 2/4 - Output, 3/5 - Exhaust

Model No.	Flow (at 6 Bar)	Port Size			Function	Symbol
		In	Out	Exh		
DCC-C1V1	1200 LPM	¼"	¼"	¼"	Double Solenoid	
DCC-E1V1	1200 LPM	¼"	¼"	⅝"	Double Solenoid	
DCC-C2V1	3500 LPM	½"	½"	½"	Double Solenoid	
DCC-E2V1	3500 LPM	½"	½"	½"	Double Solenoid	

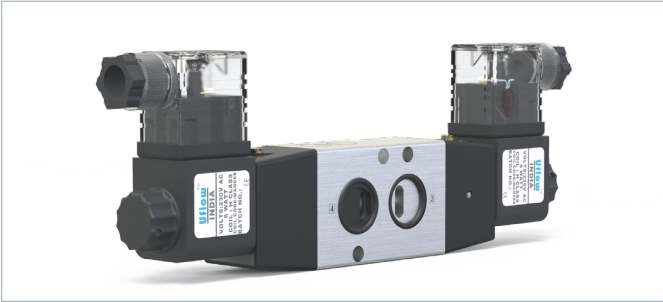
3X2, 5X2 Single solenoid namur valve with spring return



1 - Input, 2/4 - Output, 3/5 - Exhaust

Model No.	Flow (at 6 Bar)	Port Size			Function	Symbol
		In	Out	Exh		
DCC-J1RV1	1200 LPM	¼"	Namur	¼"	3X2 Spring Return	
	1200 LPM	¼"	Namur	¼"	5X2 Spring Return	

3X2, 5X2 Double solenoid namur valve



Model No.	Flow (at 6 Bar)	Port Size			Function	Symbol
		In	Out	Exh		
DCC-K1RV1	1200 LPM	¼"	Namur	¼"	3X2 Double Solenoid	
	1200 LPM	¼"	Namur	¼"	5X2 Double Solenoid	

1 - Input, 2/4 - Output, 3/5 - Exhaust

5X3 Double solenoid valve with spring center



Model No.	Flow (at 6 Bar)	Port Size			Function	Symbol
		In	Out	Exh		
DCC-F1V1	1200 LPM	¼"	¼"	⅝"	Center Blocked	
DCC-G1V1	1200 LPM	¼"	¼"	⅝"	Center Exhausted	
DCC-H1V1	1200 LPM	¼"	¼"	⅝"	Center Pressurised	
DCC-F2V1	3500 LPM	½"	½"	½"	Center Blocked	
DCC-G2V1	3500 LPM	½"	½"	½"	Center Exhausted	
DCC-H2V1	3500 LPM	½"	½"	½"	Center Pressurised	

1 - Input, 2/4 - Output, 3/5 - Exhaust

3X2 Hand lever valve manual and spring return



Model No.	Flow (at 6 Bar)	Port Size			Function	Symbol
		In	Out	Exh		
DCC-LB1V1	1200 LPM	¼"	¼"	¼"	Spring Return(NC)	
DCC-LZ1V1	1200 LPM	¼"	¼"	¼"	Spring Return(NO)	
DCC-LC1V1	1200 LPM	¼"	¼"	¼"	Manual Return	
DCC-LB2V1	3500 LPM	½"	½"	½"	Spring Return(NC)	
DCC-LZ2V1	3500 LPM	½"	½"	½"	Spring Return(NO)	
DCC-LC2V1	3500 LPM	½"	½"	½"	Manual Return	

1 - Input, 2/4 - Output, 3/5 - Exhaust

5X2 Hand lever valve manual and spring return



Model No.	Flow (at 6 Bar)	Port Size			Function	Symbol
		In	Out	Exh		
DCC-LD1V1	1200 LPM	¼"	¼"	⅝"	Spring Return	
DCC-LE1V1	1200 LPM	¼"	¼"	⅝"	Manual Return	
DCC-LD2V1	3500 LPM	½"	½"	½"	Spring Return	
DCC-LE2V1	3500 LPM	½"	½"	½"	Manual Return	

1 - Input, 2/4 - Output, 3/5 - Exhaust

5X3 Hand lever valve manual return



1 - Input, 2/4 - Output, 3/5 - Exhaust

Model No.	Flow (at 6 Bar)	Port Size			Function	Symbol
		In	Out	Exh		
DCC-LF1V1	1200 LPM	¼"	¼"	⅜"	Center Blocked	
DCC-LG1V1	1200 LPM	¼"	¼"	⅜"	Center Exhausted	
DCC-LH1V1	1200 LPM	¼"	¼"	⅜"	Center Pressurised	
DCC-LF2V1	3500 LPM	½"	½"	½"	Center Blocked	
DCC-LG2V1	3500 LPM	½"	½"	½"	Center Exhausted	
DCC-LH2V1	3500 LPM	½"	½"	½"	Center Pressurised	

5X3 Hand lever valve with spring center



1 - Input, 2/4 - Output, 3/5 - Exhaust

Model No.	Flow (at 6 Bar)	Port Size			Function	Symbol
		In	Out	Exh		
DCC-LJ1V1	1200 LPM	¼"	¼"	⅜"	Center Blocked	
DCC-LK1V1	1200 LPM	¼"	¼"	⅜"	Center Exhausted	
DCC-LM1V1	1200 LPM	¼"	¼"	⅜"	Center Pressurised	
DCC-LJ2V1	3500 LPM	½"	½"	½"	Center Blocked	
DCC-LK2V1	3500 LPM	½"	½"	½"	Center Exhausted	
DCC-LM2V1	3500 LPM	½"	½"	½"	Center Pressurised	

3X2 External pilot operated valve



1 - Input, 2/4 - Output, 3/5 - Exhaust, 10/12 - External Pilot

Model No.	Flow (at 6 Bar)	Port Size			Function	Symbol
		In	Out	Exh		
DCC-AB1V1	1200 LPM	¼"	¼"	¼"	Spring Return(NC)	
DCC-AZ1V1	1200 LPM	¼"	¼"	¼"	Spring Return(NO)	
DCC-AC1V1	1200 LPM	¼"	¼"	¼"	Double External	
DCC-AB2V1	3500 LPM	½"	½"	½"	Spring Return(NC)	
DCC-AZ2V1	3500 LPM	½"	½"	½"	Spring Return(NO)	
DCC-AC2V1	3500 LPM	½"	½"	½"	Double External	

5X2 External pilot operated valve



1 - Input, 2/4 - Output, 3/5 - Exhaust, 10/12 - External Pilot

Model No.	Flow (at 6 Bar)	Port Size			Function	Symbol
		In	Out	Exh		
DCC-AD1V1	1200 LPM	¼"	¼"	⅙"	Spring Return	
DCC-AE1V1	1200 LPM	¼"	¼"	⅙"	Double External	
DCC-AD2V1	3500 LPM	½"	½"	½"	Spring Return	
DCC-AE2V1	3500 LPM	½"	½"	½"	Double External	

5X3 Double external pilot operated valve with spring center



1 - Input, 2/4 - Output, 3/5 - Exhaust, , 10/12 - External Pilot

Model No.	Flow (at 6 Bar)	Port Size			Function	Symbol
		In	Out	Exh		
DCC-AJ1V1	1200 LPM	¼"	¼"	⅙"	Center Blocked	
DCC-AK1V1	1200 LPM	¼"	¼"	⅙"	Center Exhausted	
DCC-AM1V1	1200 LPM	¼"	¼"	⅙"	Center Pressurised	
DCC-AJ2V1	3500 LPM	½"	½"	½"	Center Blocked	
DCC-AK2V1	3500 LPM	½"	½"	½"	Center Exhausted	
DCC-AM2V1	3500 LPM	½"	½"	½"	Center Pressurised	

3X2 Push pull valve manual and spring return



1 - Input, 2/4 - Output, 3/5 - Exhaust

Model No.	Flow (at 6 Bar)	Port Size			Function	Symbol
		In	Out	Exh		
DCC-PB1V1	1200 LPM	¼"	¼"	¼"	Spring Return(NC)	
DCC-PZ1V1	1200 LPM	¼"	¼"	¼"	Spring Return(NO)	
DCC-PC1V1	1200 LPM	¼"	¼"	¼"	Manual Return	
DCC-PB2V1	3500 LPM	½"	½"	½"	Spring Return(NC)	
DCC-PZ2V1	3500 LPM	½"	½"	½"	Spring Return(NO)	
DCC-PC2V1	3500 LPM	½"	½"	½"	Manual Return	

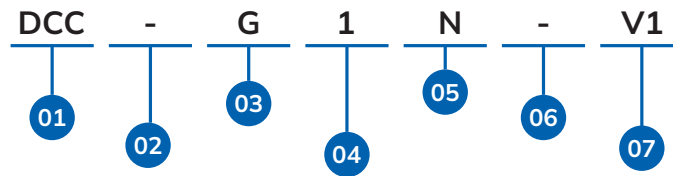
5X2 Push pull valve manual and spring return



1 - Input, 2/4 - Output, 3/5 - Exhaust

Model No.	Flow (at 6 Bar)	Port Size			Function	Symbol
		In	Out	Exh		
DCC-PD1V1	1200 LPM	¼"	¼"	⅙"	Spring Return	
DCC-PE1V1	1200 LPM	¼"	¼"	⅙"	Manual Return	
DCC-PD2V1	3500 LPM	½"	½"	½"	Spring Return	
DCC-PE2V1	3500 LPM	½"	½"	½"	Manual Return	

DCC-SERIES DC SPOOL WITH CARTRIDGE TYPE VALVE MODEL CHART



01	SERIES
	DCC

02	PRODUCT TYPE
-	DC Spool With Cartridge Type Valve

03	PORT POSITION & TYPE
A	3X2 NO Single Solenoid
B	3X2 NC Single Solenoid
C	3X2 Double Solenoid
D	5X2 Single Solenoid
E	5X2 Double Solenoid
F	5X3 Center Blocked
G	5X3 Center Exhausted
H	5X3 Center Pressurised
J	3X2 & 5X2 Single Solenoid Convertible
K	3X2 & 5X2 Double Solenoid Convertible

04	PORT SIZE
1	1/4"
2	1/2"

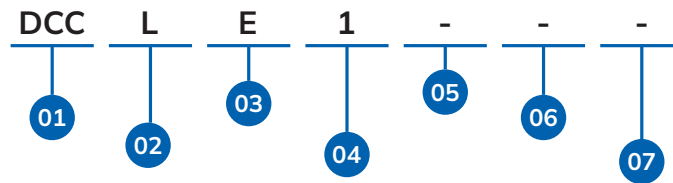
05	PORT CONNECTION
-	BSP
N	NPT
R	Namur BSP
T	Namur NPT

06	CONFIGURATION
-	REGULAR
C1	CONFIG 1
⋮	⋮
C9	CONFIG 9
CA	CONFIG 10
CB	CONFIG 11

07	VERSION
-	VERSION 0
V1	VERSION 1
V2	VERSION 2
V3	VERSION 3
⋮	⋮
V9	VERSION 9
VA	VERSION 10
VB	VERSION 11

DCC-G1NV1
1/4" 5X3 CENTER EXHAUSTED DC SPOOL WITH CARTRIDGE TYPE VALVE ALUMINIUM-NPT-NITRILE-2 TO 10 Bar-10MM-PUSH & TURN MOR-VERSION 1

DCC - SERIES DC CARTRIDGE TYPE MANUAL VALVE MODEL CHART



01	SERIES
	DCC

02	PRODUCT TYPE
L	DC Lever Type Valve
P	DC Push Pull Type Valve
A	DC Pilot Air Type Valve

03	PORT POSITION & TYPE
Z	3x2 No With Spring Return
B	3x2 Nc With Spring Return
C	3x2 Double Acting
D	5x2 With Spring Return
E	5x2 Double Acting
F	5x3 Center Blocked With Manual Return
G	5x3 Center Exhausted With Manual Return
H	5x3 Center Pressurised With Manual Return
J	5x3 Center Blocked With Spring Return
K	5x3 Center Exhausted With Spring Return
M	5x3 Center Pressurised With Spring Return

04	PORT SIZE
1	1/4"
2	1/2"

05	PORT SIZE
-	BSP
N	NPT

06	CONFIGURATION
-	REGULAR
C1	CONFIG 1
C2	CONFIG 2
C3	CONFIG 3
⋮	⋮
C9	CONFIG 9
CA	CONFIG 10
CB	CONFIG 11

07	CONFIG
-	VERSION 0
V1	VERSION 1
V2	VERSION 2
V3	VERSION 3
⋮	⋮
V9	VERSION 9
VA	VERSION 10
VB	VERSION 11

DCC-LE1
1/4" 5X2 DOUBLE ACTING DC LEVER TYPE VALVE ALUMINIUM-BSP-NITRILE-0 TO 10 Bar