

400-007^{Q&As}

Cisco Certified Design Expert (CCDE Written)

Pass Cisco 400-007 Exam with 100% Guarantee

Free Download Real Questions & Answers **PDF** and **VCE** file from:

<https://www.leads4pass.com/400-007.html>

100% Passing Guarantee
100% Money Back Assurance

Following Questions and Answers are all new published by Cisco
Official Exam Center

-  **Instant Download** After Purchase
-  **100% Money Back** Guarantee
-  **365 Days** Free Update
-  **800,000+** Satisfied Customers



QUESTION 1

Company XYZ asks for design recommendations for Layer 2 redundancy. The company wants to prioritize fast convergence and resiliency elements. In the design. Which two technologies are recommended? (Choose two.)

- A. Design MLAG/MC-LAG into the network wherever possible.
- B. Configure DHCP snooping on the switches.
- C. Use root guard.
- D. Use BPDU guard.
- E. Use UniDirectional Link Detection.

Correct Answer: AC

UDLD is not related at all.

Root guard help for root election faster.

This question is simular with Q111.

QUESTION 2

Software-defined networking architecture is used for cost-effective, adaptable, and easily manageable applications. In which two software-defined networks is SDN commonly used? (Choose two.)

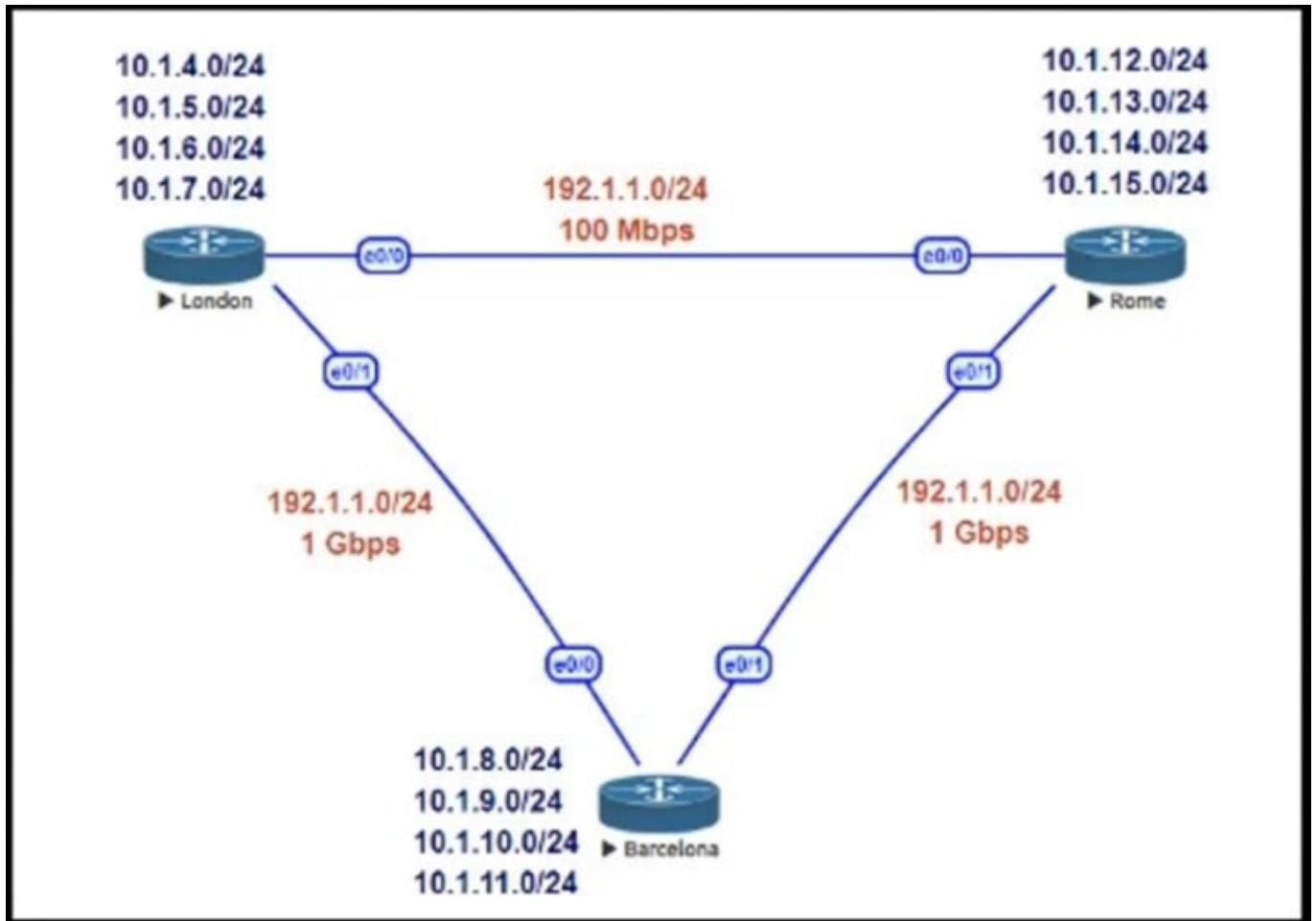
- A. wide area network
- B. mobile network
- C. metro network
- D. application network
- E. control network

Correct Answer: AB

NSN already using SDN for their telco https://en.wikipedia.org/wiki/Software-defined_networking#Applications

QUESTION 3

Refer to the exhibit.



This network is running EIGRP as the routing protocol and the internal networks are being advertised in EIGRP. Based on the link speeds, all traffic between London and Rome is getting propagated via Barcelona and the direct link between London and Rome is not being utilized under normal working circumstances. The EIGRP design should allow for efficiency in the routing table by minimizing the routes being exchanged. The link between London and Rome should be utilized for specific routes. Which two steps accomplish this task? (Choose two.)

- A. Configure EIGRP route summarization on all the interfaces to summarize the internal LAN routes
- B. Filter the routes on the link between London and Barcelona
- C. Filter the routes on the link between London and Rome
- D. Configure route leaking of summary routes on the link between London and Rome

Correct Answer: AD

QUESTION 4

A security architect receives reports of these incidents:

1.

An attacker exploits printers and medical devices in the organization to gain control of the network.

2.

An attacker disrupts operations through attacks on networked business infrastructure. What is the next step to address these issues after discovery and classification of devices?

- A. Ensure trustworthiness of devices
- B. Assess continuous security health monitoring
- C. Apply a context-based network access control policy
- D. Enforce risk-based and adaptive access policies

Correct Answer: C

<https://www.ciscolive.com/c/dam/r/ciscolive/emea/docs/2020/pdf/ADD-1001-Zero-Trust-Security-Model.pdf> (Zero Trust for workplace)

QUESTION 5

While designing a switched topology, in which two options is UplinkFast recommended? (Choose two)

- A. when switches of different spanning-tree types are connected (for example. 802.1d connecting to 802.1w)
- B. on distribution layer switches
- C. when hello timers are changed to more aggressive values
- D. on access layer switches
- E. on the core switches

Correct Answer: AD

QUESTION 6

Company XYZ wants to deploy OSPF. The design plan requires that two OSPF networks be mutually redistributed at multiple locations and ensure end-to-end connectivity to all of the company's networks.

Which technology can be used to fulfill the requirements while avoiding the creation of routing loops?

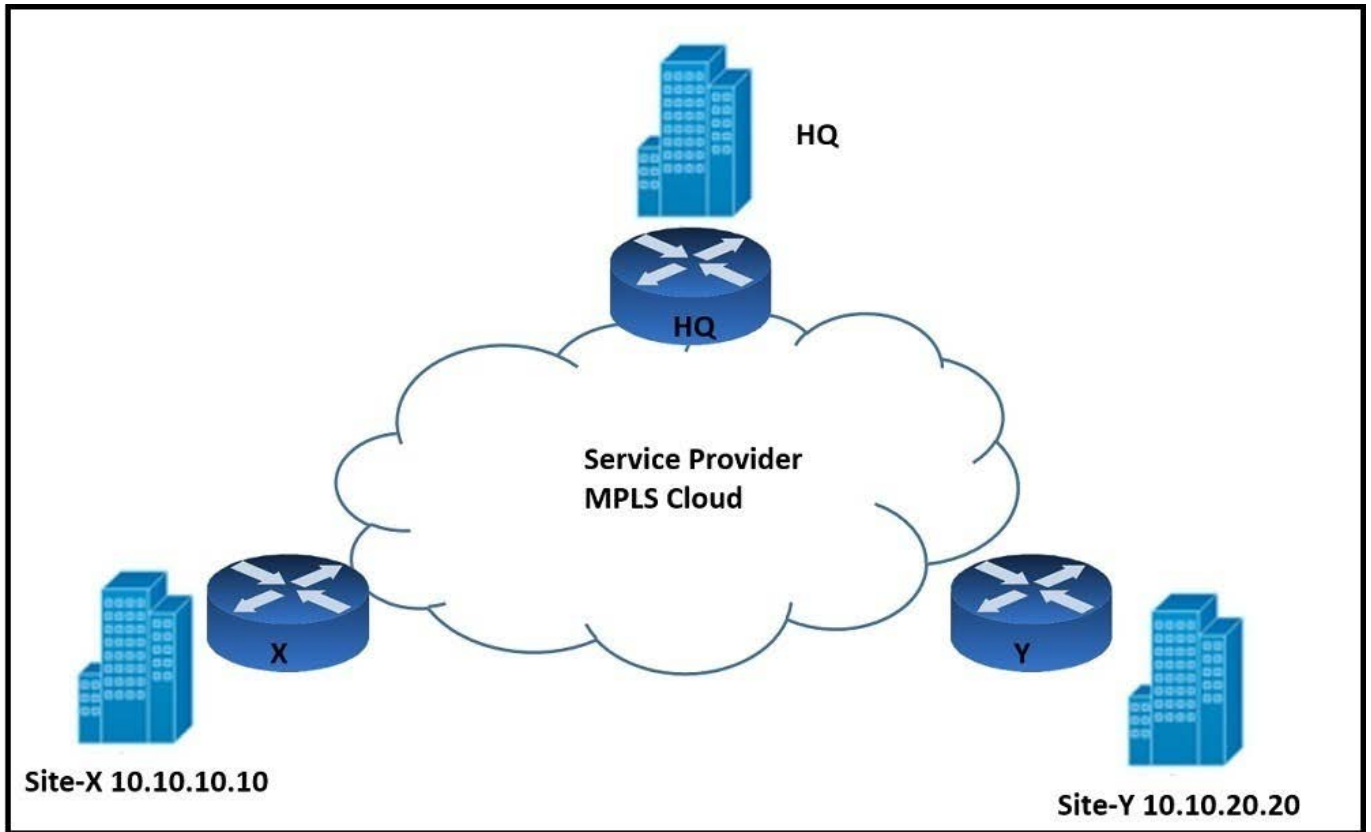
- A. Create a virtual link between ASBRs.
- B. Change the router ID for both ASBRs.
- C. Redistribute routes as external type 2 routes.
- D. Use route maps on ASBRs to filter routes with tags so they are not redistributed.

Correct Answer: D

To avoid routing loops you need to tag packets <https://www.cisco.com/c/en/us/support/docs/ip/open-shortest-path-first-ospf/4170-ospfprocesses.html>

QUESTION 7

Refer to the exhibit.



An architect must design an enterprise WAN that connects the headquarters with 22 branch offices. The number of remote sites is expected to triple in the next three years. The final solution must comply with these requirements:

Only the loopback address of each of the enterprise CE X and Y routers must be advertised to the interconnecting service provider cloud network. The transport layer must carry the VPNv4 label and VPN payload over the MP- BGP control

plane.

The transport layer must not be under service provider control.

Which enterprise WAN transport virtualization technique meets the requirements?

- A. EIGRP Over the Top
- B. MPLS over BGP over multipoint GRE
- C. DMVPN per VRF
- D. point-to-point GRE per VRF

Correct Answer: B

QUESTION 8

An engineer must design a network for a company that uses OSPF LFA to reduce loops. Which type of loop would be reduced by using this design?

- A. DTP
- B. micro loops
- C. STP
- D. REP

Correct Answer: B

QUESTION 9

Which three elements help network designers to construct secure systems that protect information and resources (such as devices, communication, and data) from unauthorized access, modification, inspection, or destruction? (Choose three.)

- A. confidential
- B. serviceability
- C. reliability
- D. availability
- E. integrity
- F. scalability

Correct Answer: ADE

QUESTION 10

An external edge router provides connectivity from a service provider to an enterprise. Which two Internet edge best practices meet compliance regulations? (Choose two)

- A. Implement filtering to control traffic that is sourced from the infrastructure IP space.
- B. Enable and use only secure protocols.
- C. Send logs to a centralized logging collection server.
- D. Implement EBGP to advertise all owned IP blocks.

E. Use login banners and interface access lists to restrict administrative access to the system

Correct Answer: BE

QUESTION 11

You have been tasked with designing a data center interconnect to provide business continuity. You want to encrypt the traffic over the DCI using IEEE 802.1AE MACsec to prevent the deployment of any firewall or IPS. Which two interconnect technologies support MACsec? (Choose two.)

- A. EoMPLS
- B. MPLS Layer 3 VPN
- C. DMVPN
- D. GET VPN
- E. KVPLS

Correct Answer: AE

QUESTION 12

Company XYZ is designing their network using the three-layer hierarchical model. At which layer must the QoS design classify or mark the traffic?

- A. access
- B. core
- C. collapsed core
- D. distribution

Correct Answer: A

QUESTION 13

Company XYZ is running SNMPv1 in their network and understands that it has some flaws. They want to change the security design to implement SNMPv3 in the network.

Which network threat is SNMPv3 effective against?

- A. man-in-the-middle attack
- B. masquerade threats
- C. DDoS attack
- D. brute force dictionary attack

Correct Answer: D

QUESTION 14

Which design consideration is valid when you contrast fabricPath and trill?

- A. FabricPath uses IS-IS, but TRILL uses VxLAN
- B. FabricPath permits active-active FHRP and TRILL support anycast gateway.
- C. FabricPath Permits ECMP, but TRILL does not
- D. FabricPath permits active-active mode, but TRILL supports only active-standby mode.

Correct Answer: B

QUESTION 15

A network architect in an enterprise is designing a network policy for certain database applications. The goal of the policy is to allow these applications to access the internet directly, whereas other user and network applications that communicate with systems or users outside their own network must be routed through the data center. The focus is on achieving higher availability and a better user experience for the database applications, but switching between different network paths based on performance characteristics must be supported.

Which solution meets these requirements?

- A. MPLS L3VPN with QoS
- B. Cloud onRamp for IaaS
- C. Cloud onRamp for SaaS
- D. MPLS direct connect

Correct Answer: C

<https://www.cisco.com/c/en/us/solutions/collateral/enterprise-networks/sd-wan/nb-06-cloud-onramp-saas-faq-cte-en.html>

[400-007 PDF Dumps](#)

[400-007 VCE Dumps](#)

[400-007 Practice Test](#)