



The Veeco Steel Collection 2017-2018 Catalog



NEW

veeco



Front View with Drawers
Open



Side View



Side View with Drawers
Open

Genesis Low Profile Double Styling Station

Model Number: GEN-3686-SS-20

- ◆ Low profile 9"D cabinet with hovering back lit mirror for each stylist
- ◆ Mirror measures 26" x 60" with a 9"D ledge mounted on concealed brackets
- ◆ Stainless Steel light reflecting side panels
- ◆ Dedicated power strip, cord management hook, and pull-out tool drawer with clipper holder, blower holder, and iron holders in new, side-step drawer configuration for each stylist
- ◆ Pull-out spice storage drawer for each stylist with adjustable center shelf
- ◆ Shared 11"H x 6"W storage nook at top of cabinet
- ◆ Also available with powder-coated, cold-rolled steel finish at additional charge for minimum quantity orders
- ◆ Overall Product Dimensions: 36"W x 19"D x 86"H



The Veeco Steel Collection can be manufactured in Stainless Steel or Cold-Rolled Steel. Cold-Rolled Steel finishes include the rustic oxidized finish or powder-coated color finish. All wood is laminated using any standard Formica or WilsonArt laminate. Premium laminates available at additional charge.

NEW

veeco



Side View



Front View with Drawers Open



Side View with Drawers Open

Genesis Low Profile Wall-Mounted Single Styling Station

Model Number: GEN-3678-SS-05

- ◆ Low profile 9"D cabinet with hovering back lit mirror
- ◆ Mirror measures 26"x60" with top lit back section and 9"D ledge mounted on concealed brackets
- ◆ Stainless Steel light reflecting side panels
- ◆ Power strip, cord management hook, and pull-out tool drawer with clipper holder, blower holder, and iron holders in a new, side-step drawer configuration
- ◆ Pull-out spice storage drawer with adjustable center shelf
- ◆ Nook with coat hook 40" from station bottom on left side and 11"H x 6"W storage nook on top right side
- ◆ Also available with powder-coated, cold-rolled steel finish at additional charge for minimum quantity orders
- ◆ Overall Product Dimensions: 36"W x 15"D x 78"H



The Veeco Steel Collection can be manufactured in Stainless Steel or Cold-Rolled Steel. Cold-Rolled Steel finishes include the rustic oxidized finish or powder-coated color finish. All wood is laminated using any standard Formica or WilsonArt laminate. Premium laminates available at additional charge.



Optional Black Glass Modesty Panel



Cold-Rolled Steel with Powder-Coated Finish



Straight Shot Tool Drawer

Forty Five Stainless Steel Double Styling Station

Model Number: FF-3265-SS-20

- ◆ All steel constructed frame
- ◆ Each stylist has glass shelf with polished edges and two rows of open shelf storage
- ◆ Straight shot tool drawer with iron holders, blower holder, clipper holders, Stainless Steel cord well, and 15-amp 6-outlet power strip for each stylist
- ◆ Can be ordered with full mirror, laminated modest panel, or black glass modesty panel at additional cost
- ◆ Also available in cold-rolled steel with powder-coated finish at additional charge for minimum quantity orders
- ◆ Overall Product Dimensions: 31"W x 20.5"D x 75"H



The Veeco Steel Collection can be manufactured in Stainless Steel or Cold-Rolled Steel. Cold-Rolled Steel finishes include the rustic oxidized finish or powder-coated color finish. All wood is laminated using any standard Formica or WilsonArt laminate. Premium laminates available at additional charge.



Forty Five Stainless Steel Single Styling Station Model Number: FF-3265-SS-05

- ◆ Straight shot tool drawer with iron holders, blower holder, clipper holders, Stainless Steel cord well, and 15-amp 6-outlet power strip
- ◆ Metal French cleats for wall mounting included
- ◆ Two rows of open shelf storage, polished glass shelf, and Stainless Steel connector brackets
- ◆ Comes standard with full mirror but also available with laminated modesty panel or black glass modesty panel at additional cost
- ◆ Also available in Cold-Rolled Steel with powder-coated finish at an additional charge for minimum quantity orders
- ◆ Overall Product Dimensions: 31.5"W x 16.25"D x 65"H



The Veeco Steel Collection can be manufactured in Stainless Steel or Cold-Rolled Steel. Cold-Rolled Steel finishes include the rustic oxidized finish or powder-coated color finish. All wood is laminated using any standard Formica or WilsonArt laminate. Premium laminates available at additional charge.



Slant Forty-Five Stainless Steel Salon Mirror

Model Number: FF-3265-SS-09

- ◆ 26" x 60" polished mirror
- ◆ Includes glass shelf with steel connector brackets and metal French cleats for mounting to wall
- ◆ Optional laminated modesty panel or black glass modesty panel at additional cost
- ◆ Also available in Cold-Rolled Steel with powder-coated finish at an additional charge for minimum quantity orders
- ◆ Overall Product Dimensions: 31.5"W x 5"D x 65"H



The Veeco Steel Collection can be manufactured in Stainless Steel or Cold-Rolled Steel. Cold-Rolled Steel finishes include the rustic oxidized finish or powder-coated color finish. All wood is laminated using any standard Formica or WilsonArt laminate. Premium laminates available at additional charge.

veeco
salon furniture + design
The Veeco Steel Collection



800.635.3772
info@VeecoSalonFurniture.com
www.VeecoSalonFurniture.com

It has been over 15 years since Veeco Salon Furniture + Design brought Stainless Steel furniture to beauty salons and cosmetology schools. We continue to add new products to the Veeco Steel Collection and are expanding your options with the introduction of new materials, new processes, and new finishes. Cold-rolled steel alternatives, like our powder-coated color finishes and our new rustic oxidized finish, offer the strength and durability of steel with an added pop of color. The Veeco Steel Collection offers a variety of sleek and modern looks for your unique beauty environment that are easy to clean and maintain so your furniture pieces will continue to look like new for years to come.

NEW

veeco



Quarter View with Closed
Drawer



Side View



Underside View Power Strip
Mounting

Alison Stainless Steel + Wood Double Easel Styling Station

Model Number: AF-3070-SS-20

- ◆ Includes standard 26" W x 36" H mirror for each stylist
- ◆ Two 15-amp, four-plex outlets mounted beneath work surface
- ◆ 3", 2.5" and 1.5" tool holders conveniently built-in to right side of each stylist work station
- ◆ Features a pull-out center drawer on each side and a 26"W x 18"D laminated lower shelf that accommodates a 21" tall kit
- ◆ Also available in powder-coated, cold-rolled steel at additional charge for minimum quantity orders
- ◆ Overall Product Dimensions: 30.25"W x 21"D x 70.25"H



The Veeco Steel Collection can be manufactured in Stainless Steel or Cold-Rolled Steel. Cold-Rolled Steel finishes include the rustic oxidized finish or powder-coated color finish. All wood is laminated using any standard Formica or WilsonArt laminate. Premium laminates available at additional charge.



Super Crazy Cab 1846 Mobile Styling Cart

Model Number: CC-1846-SU-08

- ◆ Standard 18-Gauge, 80-grit finish Stainless Steel top
- ◆ Built-in spice drawer to store products up to 13"H & 4"W
- ◆ Ample storage, including two 3" pull-out drawers, two 3" upper drawers, horizontal color holder w/ 100 2.5 oz. color tube capacity, two 6" storage drawers, one 13" storage drawer
- ◆ Standard flip-open tool drawer w/barrel lock + key & a pressure sensitive lockout hinge
- ◆ 12" x 8" x 2.5" Stainless Steel storage bin and tool rack with 1.5", 2", and 3" tool holder
- ◆ Industrial grade 15-amp, 6-plex power strip w/6' Cord
- ◆ Steel top available in cold-rolled steel with rustic oxidized finish at additional charge for minimum quantity orders
- ◆ Overall Product Dimensions: 37.25W x 18.25"D x 43.5"H



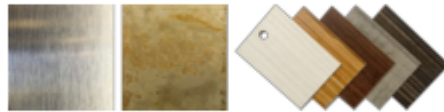
The Veeco Steel Collection can be manufactured in Stainless Steel or Cold-Rolled Steel. Cold-Rolled Steel finishes include the rustic oxidized finish or powder-coated color finish. All wood is laminated using any standard Formica or WilsonArt laminate. Premium laminates available at additional charge.



Crazy Cab 1843 Mobile Styling Cart

Model Number: CC-1843-08

- ◆ 18-gauge Stainless Steel top in 80-grit finish
- ◆ Two sheer drawers, concealed tool shelf with 1.5", 2" and 3" tool holders, and a 15-amp 6-plex power strip with 6' cord and Stainless Steel cord storage bin
- ◆ Industrial grade, non-marring locking rubber casters
- ◆ Built-in spice drawer to accommodate products up to 13"H & 4"W
- ◆ Flip-open tool drawer with barrel lock and key
- ◆ Steel top also available in cold-rolled steel with rustic oxidized finish at an additional cost for minimum quantity orders
- ◆ Overall Product Dimensions: 18"W x 18"D x 43"H



The Veeco Steel Collection can be manufactured in Stainless Steel or Cold-Rolled Steel. Cold-Rolled Steel finishes include the rustic oxidized finish or powder-coated color finish. All wood is laminated using any standard Formica or WilsonArt laminate. Premium laminates available at additional charge.



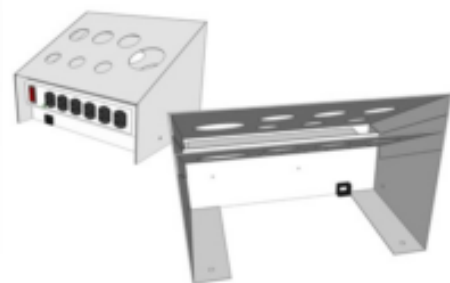
Crazy Cab 1836 Mobile Styling Cart

Model Number: CC-1836-08

- ◆ 18-gauge Stainless Steel top in 80-grit finish
- ◆ 12" x 8" x 2.5" Stainless Steel storage bin, tool rack with 1.5", 2" and 3" tool holders, and a 15-amp 6-plex power strip with 6' cord
- ◆ Industrial grade, non-marring locking rubber casters
- ◆ Spice drawer that accommodates products up to 13"H & 4"W
- ◆ Flip-open tool drawer with barrel lock and key and pressure sensitive lockout hinge
- ◆ Steel top also available in cold-rolled steel with rustic oxidized finish at an additional cost for minimum quantity orders
- ◆ Overall Product Dimensions: 18"W x 18"D x 36"H



The Veeco Steel Collection can be manufactured in Stainless Steel or Cold-Rolled Steel. Cold-Rolled Steel finishes include the rustic oxidized finish or powder-coated color finish. All wood is laminated using any standard Formica or WilsonArt laminate. Premium laminates available at additional charge.



Standard Tool holder insert

Slant Forty-Five Salon Cart

Model Number: FF-1822-08

- ◆ Stainless Steel top with 80-grit finish and appliance holder drawer
- ◆ Plinth or locking caster base, built-in 15-amp power strip, and secret pressure release drawer
- ◆ Also available with cold-rolled steel top with rustic oxidized finish at additional cost for minimum quantity orders
- ◆ Overall Product Dimensions: 18"W x 22"D x 42"H



The Veeco Steel Collection can be manufactured in Stainless Steel or Cold-Rolled Steel. Cold-Rolled Steel finishes include the rustic oxidized finish or powder-coated color finish. All wood is laminated using any standard Formica or WilsonArt laminate. Premium laminates available at additional charge.



Our Expertise



Custom Design Services

There is a reason why salons like Hair Cuttery, BloOuts, College Cuts, Jon'Ric International, Salon Lofts and Clary Sage turn to Veeco Salon Furniture + Design to help with the national roll-out of their salons. You don't need to be a chain salon or franchise to work with us. Large or small Veeco Salon Furniture + Design is here to help you create a space that looks great and, most importantly, makes you, the salon owner money.

Virtual Design Consultations

Beauty professionals are very visual and the process of designing with Veeco brings three dimensional design and vision directly to the client. Using Citrix GoToMeeting, we offer collaborative face-to-face video conferencing that you can participate in from any Mac, PC, iPad, iPhone or Android device after installing a simple, free application. During your consultation, you can watch your space turn from an idea on a floor plan to an explorable three dimensional space



Financing Your Project

Veeco has teamed up with Coastal Kapital LLC, a financial service leader in commercial equipment and asset based lending who's motto is "Financing You Can Trust". Our collaborative vision is to create a one-stop, easy access solution for clients, partners and vendors to secure the financing needed to maximize company growth. With a commitment to long lasting, prosperous relationships, we strive to help you reach your bottom line goals from renovation to expansion to exploring franchise opportunities.





Spice Mobile Styling Cart

Model Number: SP-2418-08

- ◆ Stainless Steel top with 80-grit finish
- ◆ Traditional tool drawer with blower holder, iron holders, and clipper well
- ◆ Locking, industrial grade casters
- ◆ Low profile drawer pulls
- ◆ Spice drawer accommodates products up to 13"H x 4"W
- ◆ Can also be ordered with tool holders built-in to steel top
- ◆ Available with cold-rolled steel top in rustic oxidized finish at additional charge for minimum quantity orders
- ◆ Overall Product Dimensions: 24"W x 18"D x 42"H

All wood is laminated using any standard Formica or WilsonArt laminate. Premium laminates available at additional charge.



The Veeco Steel Collection can be manufactured in Stainless Steel or Cold-Rolled Steel. Cold-Rolled Steel finishes include the rustic oxidized finish or powder-coated color finish. All wood is laminated using any standard Formica or WilsonArt laminate. Premium laminates available at additional charge.



Short Spice Mobile Styling Cart with Tool Holders

Model Number: SP-SH-2418-WH-08

- ◆ 80-grit finish, Stainless Steel top with built-in blower holder and iron holders
- ◆ Locking industrial grade casters and 6-outlet power strip built-in
- ◆ Low profile drawer pulls
- ◆ Spice drawer accommodated products up to 13"H and 4"W
- ◆ Also available with cold-rolled steel top in rustic oxidized finish at an additional cost for minimum quantity orders
- ◆ Overall Product Dimensions: 24W x 18"D x 36"H



The Veeco Steel Collection can be manufactured in Stainless Steel or Cold-Rolled Steel. Cold-Rolled Steel finishes include the rustic oxidized finish or powder-coated color finish. All wood is laminated using any standard Formica or WilsonArt laminate. Premium laminates available at additional charge.



Powder-Coated Cold-Rolled Steel



Front View



Powder-Coated Cold-Rolled Steel

Stainless Steel Double Station with Storage

Model Number: AV-128-SS

- ◆ Double framed mirrors, double-sided ledge with appliance holders, double-sided cabinet with two locking storage compartments each on lockable, heavy duty casters
- ◆ 18-gauge Stainless Steel construction with 80-grit finish on work surfaces
- ◆ Comes standard with hasp locks but combination locks can be installed as an optional upgrade for an additional charge
- ◆ Four, built-in 20-amp duplex outlets
- ◆ Can be wired to floor or ceiling but preference must be specified at time of order
- ◆ Available with body of unit constructed from cold-rolled steel with powder-coated finish at additional charge for minimum quantity orders
- ◆ Overall Product Dimensions: 46"W x 34"D x 72"H



The Veeco Steel Collection can be manufactured in Stainless Steel or Cold-Rolled Steel. Cold-Rolled Steel finishes include the rustic oxidized finish or powder-coated color finish.



Stainless Steel Wall-Mounted Station

Model Number: AV-109-SS

- ◆ Stainless Steel constructed wall-mounted station
- ◆ 26" x 36" mirror and standard built-in tool holders included
- ◆ Pairs perfectly with AV-108
- ◆ Available with wood inserts to minimize wear from mannequin clamps
- ◆ Stainless steel work surface with 80-grit finish
- ◆ Overall Product Dimensions: 28.5W x 14"D x 39.25"H



Stainless Steel Mobile Storage Cart

Model Number: AV-108-SS

- ◆ Durable Stainless Steel construction
- ◆ Shock resistant drawers
- ◆ Lockable storage cabinet
- ◆ Industrial grade locking casters.
- ◆ Overall Product Dimensions: 18"W x 17"D x 34"H



Select pieces in the Veeco Steel Collection are recommended to be constructed completely in stainless steel. These models feature vertical surfaces constructed in #4 finish stainless steel and horizontal work surfaces made in 80-grit finish stainless steel.

NEW

veeco



Front View with One Mirror Open

Pacific Steel + Wood Double School Station with Flip Open Mirror

Model Number: PA-4836-WD-20

- ◆ Stainless Steel work surface top with counter-balanced flip open mirror
- ◆ 16"x21" acrylic mirror included
- ◆ Constructed with wood substrate core to minimize noise
- ◆ Center mounted electrical box, four outlet power strip and top-opening center panel for easy cord management
- ◆ Standard mannequin clamping can be done with mirror open
- ◆ Laminated storage cabinet with two hasp locked doors for each stylist
- ◆ Overall Product Dimensions: 48"W x 32"D x 36"H



It is recommend that the Veeco Steel Collection pieces be manufactured with 80-grit finish stainless steel work surfaces to insure the highest level of durability for these pieces. All wood is laminated using any standard Formica or WilsonArt laminate. Premium laminates available at additional charge.



Why Should You Use Stainless Steel Furniture in Your Cosmetology School?

Stainless Steel, cold rolled steel and other steel products have become a valuable asset in the manufacturing of durable furniture suitable for cosmetology schools needing low-maintenance, long-lasting styling stations, hydraulic chairs, and classroom furniture. Over the 50 years Veeco has worked with beauty schools, our design team has consistently heard the same complaints, criticisms, and problems: the wood and laminate cabinetry doesn't hold up to your average cosmetology student. Styling stations suffer signs of wear and tear, showing chips, dings and de-lamination. Stations that work perfectly in a typical salon don't respond the same in the school environment. They are constantly in use and the students view them as a temporary home, giving little to no thought to the long term maintenance of the stations for the classes that follow them.



In the late 1990's, Veeco owner, Len Cohen, was called on by a major soft-goods beauty company to see if it would be practical from a cost standpoint to develop a line of cosmetology furniture using stainless steel. After doing his homework, the advantages became obvious:

- Stainless steel is resistant to chips, dings, and gouges
- Stainless steel edging protects furniture from mannequin head clamps and clamp sites are generally the first areas of laminated wood stations that cracks and damage occur
- Steel ages well and tends to look almost the same even after 10-15 years of consistent usage
- Cold-rolled steel allows for the incorporation of colored finishes with the durability benefits of a steel product
- Cold-rolled steel and stainless steel can easily be combined in the same piece, allowing for stainless horizontal work surfaces and powder-coated cold-rolled vertical surfaces
- Steel is significantly more student-proof than laminated wood cabinetry, increasing the lifespan of your investment and requiring less frequent maintenance and replacement



Front View with Drawers Open

Pacific Stainless Steel Double School Station with Flip Open Mirror

Model Number: PA-4836-SS-20

- ◆ Stainless Steel, 80-grit finish, work surface with counter-balanced flip open mirror
- ◆ 16"x21" acrylic mirror included
- ◆ Constructed with wood substrate core to minimize noise
- ◆ Center mounted electrical box, four outlet power strip and top-opening center panel for easy cord management
- ◆ Standard mannequin clamping can be done with mirror open
- ◆ Stainless Steel storage cabinet with two hasp locked doors for each stylist
- ◆ Also available in cold-rolled steel with powder-coated finish for base of unit only at an additional charge for minimum quantity orders
- ◆ Overall Product Dimensions: 48"W x 32"D x 36"H



The Veeco Steel Collection can be manufactured in Stainless Steel or Cold-Rolled Steel. Cold-Rolled Steel finishes include the rustic oxidized finish or powder-coated color finish. All wood is laminated using any standard Formica or WilsonArt laminate. Premium laminates available at additional charge.



Powder-Coated Cold-Rolled Steel



Customized Laminated Drawer Face



Powder-Coated Cold-Rolled Steel

Stainless Steel Double Station with Drawer and Shelf

Model Number: AV-128M-WDWS-SS

- ◆ Constructed fully with Stainless Steel frame and Stainless Steel work surfaces in 80-grit finish
- ◆ Includes pull-out drawer and lower storage tray for each stylist
- ◆ Stainless Steel ledge with built-in tool holders
- ◆ Also available with body manufactured in cold-rolled steel and powder-coated finish at additional charge for minimum quantity orders
- ◆ Overall Product Dimensions: 28"W x 25"D x 72"H



The Veeco Steel Collection can be manufactured in Stainless Steel or Cold-Rolled Steel. Cold-Rolled Steel finishes include the rustic oxidized finish or powder-coated color finish. All wood is laminated using any standard Formica or WilsonArt laminate. Premium laminates available at additional charge.



Concept Stainless Steel Double Station

Model Number: CP-8720-SS

- ◆ Stainless Steel Construction
- ◆ 26" x 36" double sided mirrors with polished edges
- ◆ Stainless Steel work surface with 80-grit finish and built-in tool holders and inset panels in any standard laminate finish
- ◆ Storage drawer and storage cabinet for each stylist
- ◆ Available with bottom cabinet section only made in cold-rolled steel with powder-coated finish at additional cost for minimum quantity orders
- ◆ Overall Product Dimensions: 48W x 36.5"D x 73"H



The Veeco Steel Collection can be manufactured in Stainless Steel or Cold-Rolled Steel. Cold-Rolled Steel finishes include the rustic oxidized finish or powder-coated color finish. All wood is laminated using any standard Formica or WilsonArt laminate. Premium laminates available at additional charge.



Empire Steel + Wood Double Styling Station

- ◆ Stainless Steel, 80-grit finish work surface with built-in tool holders and steel mirror frame
- ◆ Mounts to floor with steel plate and uprights for increased stability
- ◆ Available in choice of standard Formica and WilsonArt laminate finishes
- ◆ Overall Product Dimensions: 36"W x 32.5"D x 78"H



The Veeco Steel Collection can be manufactured in Stainless Steel or Cold-Rolled Steel. Cold-Rolled Steel finishes include the rustic oxidized finish or powder-coated color finish. All wood is laminated using any standard Formica or WilsonArt laminate. Premium laminates available at additional charge.



Interior View of Steel Frame and Seat



Steel Frame Construction

Steel Frame Hydraulic Styling Chair

Model Number: AR-HC-01-B

- ◆ Steel frame construction
- ◆ Molded loop arm
- ◆ Parallel leg rest
- ◆ Round base with large pump for added stability
- ◆ Veeco's most popular chair for cosmetology schools
- ◆ 5 year warranty on hydraulic pump
- ◆ Comes standard in black upholstery; other color options available at additional cost
- ◆ Overall Chair Dimensions: 24"W x 26"D x 35"H



Steel + Wood

The combination of laminated wood and stainless steel leads to an affordable, durable, and customizable piece of salon cabinetry. Veeco designers use stainless on the horizontal work surfaces combined with classic wood cabinetry that can be manufactured in any standard Formica or WisonArt laminate. This EMP-020 Double Styling Station is a perfect illustration of how to combine the pizzazz and durability of stainless steel with the sturdiness of wood.



Stainless Steel

The Veeco Steel Collection horizontal work surfaces use Stainless Steel with an 80-grit finish (pictured right, below), which can easily be buffed to remove the minor scratches or cosmetic dings. The vertical steel surfaces are manufactured with a #4 finish (pictured left, below).



Cold-Rolled Steel with Powder-Coated Finish

Powder coating is a process that applies the color of your selection as a free-flowing, dry powder to the cold-rolled steel component. The difference between a conventional liquid paint is that powder-coating does not require a solvent to keep the binder and filler parts in a liquid suspension form. We offer a full spectrum of color choices for minimum quantity orders of powder-coated, cold-rolled steel furniture pieces.



Cold-Rolled Steel with Rustic Oxidized Finish

This is the newest finish we offer for cold-rolled steel pieces. The finish is achieved by treating 16-gauge cold rolled steel to induce the oxidation effect. Once the unique, one-of-a-kind rustic finish has developed, a clear polyurethane powder-coating is applied and baked to cure in order to protect the finish for the life of your piece.





Sassi Hydraulic Styling Chair

Model Numbers: SS-701-B

- ◆ Matching shampoo chair, dryer chair, and all-purpose chair also available
- ◆ Includes round base with round tube leg rest
- ◆ Veeco's best selling hydraulic chair with black polymer closed loop arms and a comfortable cushioned seat and back
- ◆ Expertly upholstered in any standard color
- ◆ 5 yr. warranty on hydraulic pump
- ◆ Overall Product Dimensions: 24"W x 20.5"D x 33"H



Stiletto Hydraulic Styling Chair

Model Number: ST-9701-B

- ◆ Matching shampoo chair, dryer chair, and all-purpose chair also available
- ◆ Includes round base with round tube leg rest
- ◆ Seat and back built from five-layer curved plywood, high density poly-foam and commercial grade upholstery in any standard color
- ◆ 5 yr. warranty on hydraulic pump
- ◆ Overall Product Dimensions: 25"W x 19.25"D x 34.25"H



Upholstery Variations



Upholstery Variations

Ito Hydraulic Styling Chair

Model Number: ITO-701-IMP

- ◆ 100% laser cut steel frame construction, press formed to shape
- ◆ Each arm, foot rest, and foot paddle is finished in satin chrome
- ◆ Powder-coated seat frame
- ◆ Expertly upholstered in any standard color or combination of colors
- ◆ 5 year warranty on hydraulic pump
- ◆ Features a flip-up foot rest to minimize the chairs footprint when not in use
- ◆ Overall Chair Dimensions: 25"W x 21"D x 34"H



Brooklyn Hydraulic Styling Chair

Model Numbers: AR-102-B



- ◆ Floating back and seamless upholstery for easy clean up
- ◆ 21" clearance between arms
- ◆ Includes standard round base and single tube stainless steel leg rest with rubber foot rest
- ◆ Only available in black upholstery
- ◆ 5 yr. warranty on hydraulic pump
- ◆ Overall Product Dimensions: 26"W x 24"D x 24"H



Phoenix Hydraulic Styling Chair

Model Number: PH-5301-B

- ◆ Matching shampoo chair, dryer chair, and all-purpose chair also available
- ◆ Includes round base with round tube leg rest
- ◆ Black polymer arms and expertly upholstered seat and back cushion in any standard color
- ◆ 5 year warranty on hydraulic pump
- ◆ Veeco's roomiest hydraulic styling chair, with 21" clearance between arms
- ◆ Overall Product Dimensions: 25.75"W x 23"D x 33.25"H



Double Backwash Unit with Stainless Steel Top

Model Number: SC-27-SS

- ◆ Stainless Steel top with 80-grit finish or fully laminated top
- ◆ Two articulating porcelain shampoo bowls
- ◆ Ample rear storage
- ◆ Comfortable seat with adjustable back and sliding /locking seat bottom
- ◆ Seats expertly upholstered in your choice of colors
- ◆ Veeco recommends stainless steel, 80-grit finish top but unit can be customized with cold-rolled steel tops in powder-coated finish at additional charge for minimum quantity orders
- ◆ Overall Product Dimensions: 63.5"W x 48"D x 38.5"H



All Wood Version with Laminated Top



Rear View of Unit



The Veeco Steel Collection can be manufactured in Stainless Steel or Cold-Rolled Steel. Cold-Rolled Steel finishes include the rustic oxidized finish or powder-coated color finish. All wood is laminated using any standard Formica or WilsonArt laminate. Premium laminates available at additional charge.

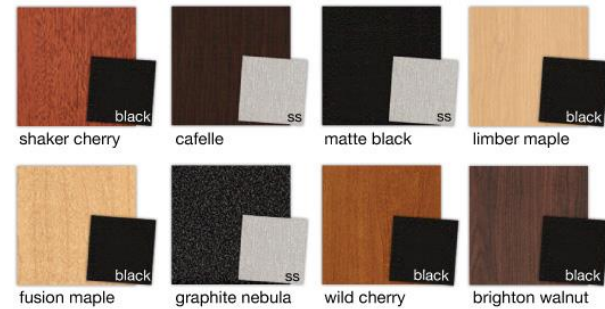


QSE Bulkhead

Model Number: CMC-5508-42

- ◆ 24" W bowl mounting surface, molded bottle well, tilt-out soiled towel hamper, backsplash, and upper towel storage cabinet
- ◆ Bowl sold separately
- ◆ Available in Fusion Maple, Graphite Nebula, Cafelle, Brighton Walnut, Shaker Cherry, Wild Cherry, Matte Black or Limber Maple
- ◆ Overall Product Dimensions: 42"W x 12"D x 71"H

LAMINATE





Veeco Salon Design Process

Designing your new salon or cosmetology school with Veeco Salon Furniture • Design is an insightful process. Beauty professionals are very visual and the process of designing with Veeco brings three dimensional design and vision directly to the client. Schedule a free GoToDesign Meeting today by calling at 1.800.635.3772 or requesting an appointment on our website.



Citrix GoToMeeting is an extremely simple, extraordinarily convenient way to hold virtual online consultations from the convenience of your home or business. The application is free to download and, with it, we can start a meeting and share screens with just a click. Attendees can join from a Mac, PC, iPad, iPhone or Android device, allowing you to collaborate with our design team from anywhere.

Watch your space turn from an idea on a floor plan to an explorable three dimensional space. Showing you our screen can influence important layout and product changes on the spot. We can virtually walk you through your new space and help you envision our furniture in your dream beauty environment.

GET CONNECTED TODAY



Veeco Melrose Park, IL



Your Computer



Triple Backwash Unit with Stainless Steel Top

Model Number: SC-37-SS

- ◆ 80-grit finish Stainless Steel top, also available with laminated top
- ◆ Three articulating porcelain shampoo bowls
- ◆ Adjustable chair backs and sliding/locking seats
- ◆ Plumbs from the floor or the wall,
- ◆ Ample rear storage
- ◆ Top also available in Cold-Rolled Steel with powder-coated finish at an additional charge for minimum quantity orders
- ◆ Overall Product Dimensions: 94"W x 48"D x38.5"H



The Veeco Steel Collection can be manufactured in Stainless Steel or Cold-Rolled Steel. Cold-Rolled Steel finishes include the rustic oxidized finish or powder-coated color finish. All wood is laminated using any standard Formica or WilsonArt laminate. Premium laminates available at additional charge.



Custom Color Bar Configuration



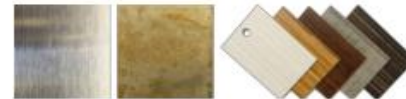
Side View



Complete Color Bar with Stainless Steel Top

Model Number: CB-72-SS

- ◆ Includes color storage rack, upper cabinet, Stainless Steel sink and Stainless Steel counter top with 80-grit finish
- ◆ Cabinetry available in any standard Formica or WilsonArt laminate
- ◆ Work surface sits 36" from ground
- ◆ Ample, customizable storage in lower cabinet
- ◆ Lower Cabinet Dimensions: 72"W x 19"D x 40"H
- ◆ Color Rack Dimensions: 36"W x 6.25"D x 30"H
- ◆ Upper Cabinet Dimensions: 36"W x 12"D x 18"H



The Veeco Steel Collection can be manufactured in Stainless Steel or Cold-Rolled Steel. Cold-Rolled Steel finishes include the rustic oxidized finish or powder-coated color finish. All wood is laminated using any standard Formica or WilsonArt laminate. Premium laminates available at additional charge.



Dispensary Sink Cabinet with Stainless Steel Top

Model Number: CP-8818

- ◆ Includes Stainless Steel sink and Stainless Steel work surface with 80-grit finish
- ◆ Generous storage space
- ◆ Cabinetry available in any standard Formica or WilsonArt laminate
- ◆ Work surface recommended in stainless steel with 80-grit finish but can be manufactured in cold-rolled steel with rustic oxidized finish at additional cost for minimum quantity orders
- ◆ Overall Product Dimensions: 36"W x 24"D x 39"H



Upper Towel Cabinet

Model Numbers: UT-36

- ◆ Fully laminated storage cabinet in your choice of standard Formica or WilsonArt laminate finishes
- ◆ Double sliding doors to keep towels and products out of customer's view but readily accessible to stylist
- ◆ See Upholstery and Laminate Finishes page for available laminate options
- ◆ Overall Product Dimensions: 36"W x 12.5"D x 20"H

All wood is laminated using any standard Formica or WilsonArt laminate. Premium laminates available at additional charge.





Cold-Rolled Steel Version with Powder-Coated Finish



Alternate Laminate Selection on Stainless Steel Version

Redman Stainless Steel Makeup Station

Model Number: RD-MU-4360-SS

- ◆ Two adjustable side mirrors, bulbs not included
- ◆ Eight glass jars, two tissue dispensers, and six inch center drawer
- ◆ All steel constructed frame with 80-grit finish tops
- ◆ Adjustable levelers
- ◆ Available in any standard Formica or WilsonArt laminate finish
- ◆ Also available in cold-rolled steel with powder-coated finish at additional charge for minimum quantity orders
- ◆ Overall Product Dimensions: 42"W x 21.5"D x 65"H



The Veeco Steel Collection can be manufactured in Stainless Steel or Cold-Rolled Steel. Cold-Rolled Steel finishes include the rustic oxidized finish or powder-coated color finish. All wood is laminated using any standard Formica or WilsonArt laminate. Premium laminates available at additional charge.



Stand Up Make Up Stool Model Number: B-1691-CS

- ◆ Adjustable arms, ring footrest, and pneumatic gas lift
- ◆ Suggested weight capacity is 250 lbs.
- ◆ Available in black CaressSoft, black crepe, burgundy crepe, grey crepe or blue crepe upholstery
- ◆ 27 inch nylon base with 2" dual wheels
- ◆ Seat Dimensions: 20"W x 18"D
- ◆ Seat Height: 26.5" - 31.5"

Ergonomic Make Up Stool Model Number: B-1617-BE

- ◆ Loop arms and removable footrest ring
- ◆ Pneumatic gas lift, tilt tension, and upright lock
- ◆ Suggested weight limit is 250 lbs.
- ◆ Tweed upholstery available in blue, black, grey or burgundy
- ◆ 27 inch nylon base with 2" dual wheels
- ◆ Seat Dimensions: 17.5"W x 16.5"D
- ◆ Seat Height: 26.5" - 31.5"





Standard Laminate Options

Veeco Made-to-Order Furniture can be manufactured in any of the laminate options pictured below at no additional cost.

While these selections offer a good representation of the laminate choices available, printed colors and monitor color displays are rarely 100% accurate. Laminate samples are available upon request.



Standard Upholstery Options

Veeco Made-to-Order Furniture can be manufactured in any of the upholstery options pictured below at no additional cost.

While these selections offer a good representation of the upholstery choices available, printed colors and monitor color displays are rarely 100% accurate. Upholstery samples are available upon request.





Clary Steel + Wood Manicure Table

Model Number: CL-4635-18

- ◆ Cold-Rolled Steel frame and fusch mounted 20-amp, 6-plug power strip with nested 6' cord
- ◆ Includes two drawers, one open storage cubby, and one flip out door on the technicians' side
- ◆ Expertly upholstered arm pad included in your choice of colors
- ◆ Standard 6" New York style door pulls in brushed finish
- ◆ Powder-coated finish available in variety of colors for an additional charge with minimum quantity orders
- ◆ Overall Product Dimensions: 46"W x 18.25"D x 35"H



Front View of Technician Side



Upholstered Arm Pad



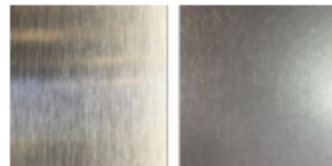
The Veeco Steel Collection can be manufactured in Stainless Steel or Cold-Rolled Steel. Cold-Rolled Steel finishes include the rustic oxidized finish or powder-coated color finish. All wood is laminated using any standard Formica or WilsonArt laminate. Premium laminates available at additional charge.



Stainless Steel Manicure Table

Model Number: CP-8818

- ◆ 18-gauge Stainless Steel construction
- ◆ 80-grit finish on work surface and Four, industrial grade, 4.5" lockable casters
- ◆ Includes expertly upholstered arm rest in your choice of colors
- ◆ Manufactured completely in stainless steel for maximum durability
- ◆ Overall Product Dimensions: 36"W x 16.25"D x 28.5"H



Select pieces in the Veeco Steel Collection are recommended to be constructed completely in stainless steel. These models feature vertical surfaces constructed in #4 finish stainless steel and horizontal work surfaces made in 80-grit finish stainless steel.



B-6419 Client Chair



B-6416 Technician Chair

Client Chair and Technician Chair

Model Numbers: B-6416 + B-6419

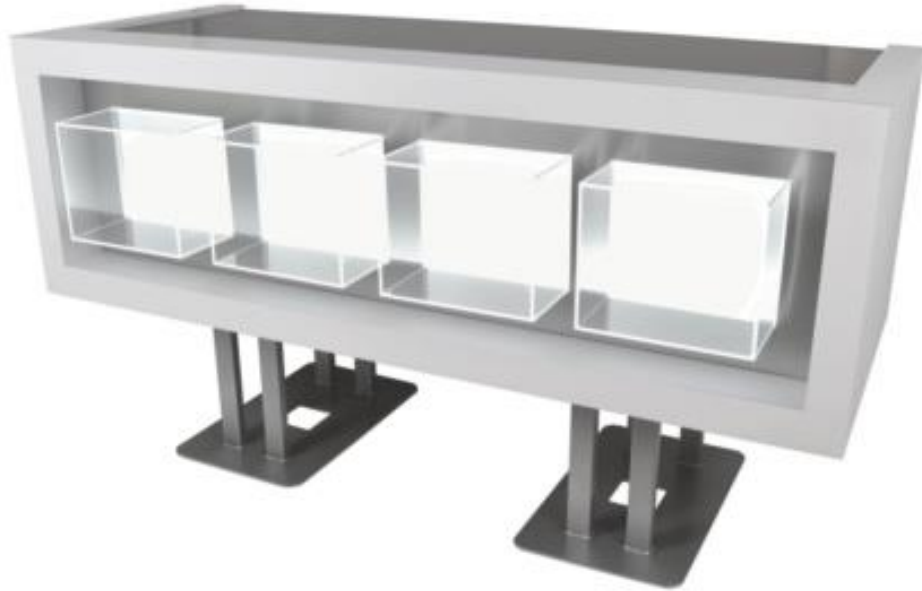
- ◆ Available in Red, Pink,, Orange, Blue, Purple or Grey Mesh Upholstery
- ◆ Both chairs feature pewter loop arms
- ◆ Client chair sits on pewter cantilever base
- ◆ Technician chair has 27" pewter base and pneumatic gas lift
- ◆ Client Chair Seat Dimensions: 19"W x 18.5"D x 19"H
- ◆ Technician Chair Seat Dimensions: 19"W x 18.5"D x 18.5-22"H



Clary Illuminated Standing Reception Desk

Model Number: CL-6938-16

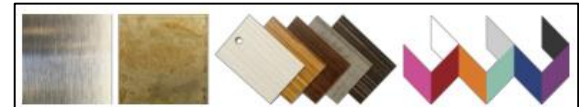
- ◆ Steel constructed base
- ◆ Four, LED back-lit acrylic retail display cubes with frosted acrylic back panel
- ◆ Stainless Steel wrapped top in 80-grit finish
- ◆ Built-in wire chase, four pull out drawers and two large storage areas
- ◆ Cold-rolled steel frame with powder-coated finish shown here in Argent Silver Metallic finish
- ◆ Overall Dimensions: 69"W x 28"D x 38"H



Front View with LED Lights Off



Back View of Custom Version with Cabinet
Doors



The Veeco Steel Collection can be manufactured in Stainless Steel or Cold-Rolled Steel. Cold-Rolled Steel finishes include the rustic oxidized finish or powder-coated color finish. All wood is laminated using any standard Formica or WilsonArt laminate. Premium laminates available at additional charge.



Illuminated Retail Display

Model Numbers: AV-3670-17

- ◆ Steel frame construction with frosted glass back and shelving
- ◆ LED strip lighting to highlight retail products and lower cabinet for convenient storage of retail stock
- ◆ Cold-rolled steel frame with powder-coated finish shown here in Argent Silver Metallic finish
- ◆ Overall Product Dimensions: 36"W x 17"D x 70.5"H



Clary Illuminated Cube Retail Display

Model Number: CL-2284-17

- ◆ Steel frame construction with four, 10" x 12" LED Lit acrylic cubes to feature retail products, and rocker switch installed in the cabinet
- ◆ Adjustable floor glides
- ◆ Cold-rolled steel frame with powder-coated finish shown here in Argent Silver Metallic finish
- ◆ Overall Product Dimensions: 22"W x 20"D x 84"H



The Veeco Steel Collection can be manufactured in Stainless Steel or Cold-Rolled Steel. Cold-Rolled Steel finishes include the rustic oxidized finish or powder-coated color finish. All wood is laminated using any standard Formica or WilsonArt laminate. Premium laminates available at additional charge.



Clary Special Frame Love Seat

Model Number: CL-4829-26

- ◆ Steel frame construction and 19" seat height
- ◆ Includes built-in USB/Duplex outlets
- ◆ Two 24"W x 24"D x 475"H upholstered seat cushions
- ◆ Standard Formica or WilsonArt laminate finishes can be selected
- ◆ Cold-rolled steel with powder-coated finish shown in Argent Silver Metallic
- ◆ Overall Product Dimensions: 48"W x 26"D x 29"H



Clary Special Extended Frame Bench with Tall Back

Model Number: CL-7242-26

- ◆ Steel frame construction with 19"H seat
- ◆ Built-in USB/Duplex outlets
- ◆ Two 24" x 24" x 475" upholstered seat cushions and two 20" x 24" upholstered seat backs
- ◆ Built-in 3" deep storage well between seats
- ◆ Cold-rolled steel frame with Argent Silver Metallic shown
- ◆ Overall Product Dimensions: 72"W x 26"D x 42"H



The Veeco Steel Collection can be manufactured in Stainless Steel or Cold-Rolled Steel. Cold-Rolled Steel finishes include the rustic oxidized finish or powder-coated color finish. All wood is laminated using any standard Formica or WilsonArt laminate. Premium laminates available at additional charge.



veeco

salon furniture + design

custom stainless steel + laminate fabrication