



# Bluff Creek Hideaway 266 Acres



Located in southern Edwards County  
Very, very remote; End of road property  
1200 sq ft Cabin with new carpeting and tile; all furnishings and appliances will convey  
New pex piping  
Water well, electricity, septic  
Large 2800-gallon water holding tank  
Electricity in place on 2 different parts of the property  
Large low fenced neighbor on the southwestern boundary  
The terrain has several cleared bottoms, and large dry creek running in and out of the property  
Moderately steep hills with plenty of thick cover  
Lots of the property is not disturbed and used as a sanctuary for the wildlife  
Wildlife includes axis, whitetail, aoudad, turkey, hog  
5 blinds, 30 ft hog pen, 3 watering troughs, 6 corn feeders, 2 hay feeders,  
home made deer winch, many extras  
Hunting vehicle available  
Wildlife exempt taxes \$699,950 Listing #220

**Western Hill Country Realty**

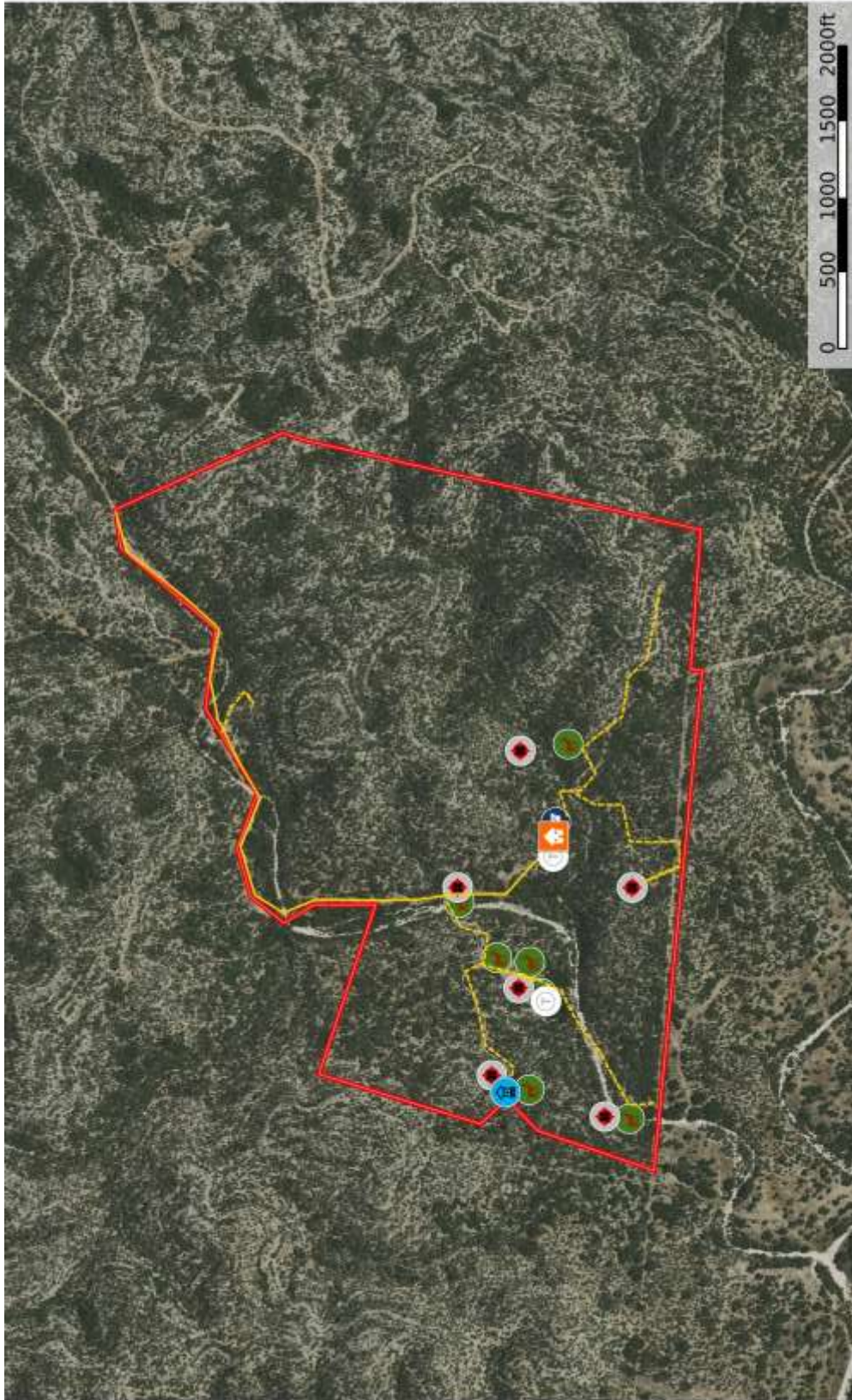
[www.westernhillcountryrealty.com](http://www.westernhillcountryrealty.com)

[info@westernhillcountryrealty.com](mailto:info@westernhillcountryrealty.com)

830-683-4435



# Bluff Creek Hideaway 266 Acres



**Western Hill Country Realty**

[www.westernhillcountryrealty.com](http://www.westernhillcountryrealty.com)

[info@westernhillcountryrealty.com](mailto:info@westernhillcountryrealty.com)

830-683-4435



# Bluff Creek Hideaway 266 Acres



## Western Hill Country Realty

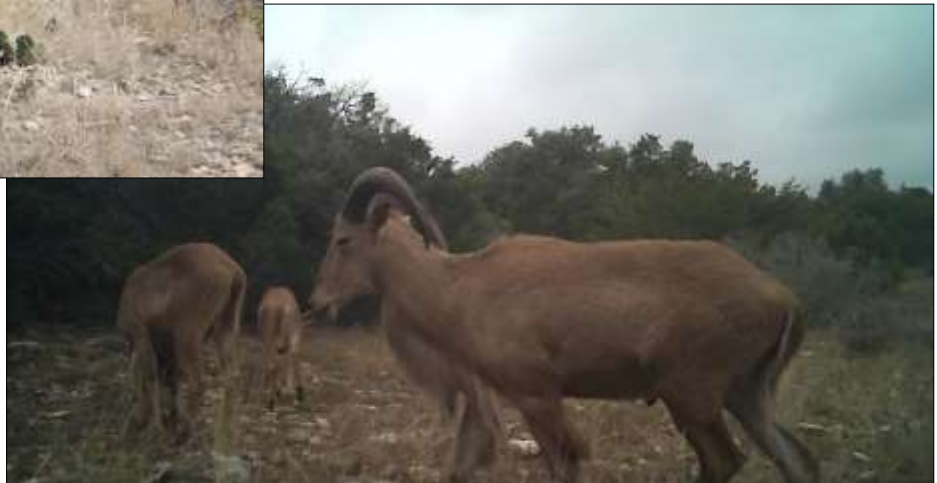
[www.westernhillcountryrealty.com](http://www.westernhillcountryrealty.com)

[info@westernhillcountryrealty.com](mailto:info@westernhillcountryrealty.com)

830-683-4435



# Bluff Creek Hideaway 266 Acres



**Western Hill Country Realty**

[www.westernhillcountryrealty.com](http://www.westernhillcountryrealty.com)

[info@westernhillcountryrealty.com](mailto:info@westernhillcountryrealty.com)

830-683-4435