

# Historic Massachusetts Salutes



## Westover Air Force Base



UNOFFICIAL GUIDE PUBLISHED BY BOONE PUBLICATIONS, INC., a private firm, in no way connected with the Department of the Air Force. Opinions expressed by the publisher and writers herein are their own and are not to be considered an official expression by the Department of the Air Force. The appearance of advertisements in this publication does not constitute an endorsement by the Department of the Air Force of the firms, products or services advertised.









**Major General Oscar Westover**  
**1883-1936**

Oscar Westover was born in Bay City, Michigan, July 23, 1883. He enlisted in the Army in 1901 and served as a private before entering the U. S. Military Academy. He was graduated in June, 1906 and was commissioned in Infantry.

General Westover served with the 14th Infantry in the Philippines. He returned to the Military Academy in 1911 as an instructor in the Department of Drawing.

He served in Alaska from 1914 through 1916, and upon returning he was appointed assistant professor in the Department of Drawing at the Academy. Following two brief assignments in Georgia and New Jersey, he was put in charge of the Storage Department, Signal Corps, and Storage and Traffic Department, Bureau of Aircraft Production in 1918. Between November 1918 and October 1920 he served as acting executive, assistance executive, and executive of the Air Service.

General Westover was graduated from the Balloon School, Omaha, Neb., in March 1921. Following graduation he was assigned as chief of the Balloon and Airship Division in the Office of the Chief of Air Service, Washington, D. C. He was graduated from the Air Service Airship School at Langley Field, Va., in April 1922 and the Air Corps Primary Flying School at Brooks Field, Tex., in Dec. 1923. In Dec. 1923 he was graduated from the Air Corps Advanced Flying School. He assumed command of Langley Field and entered the Air Corps Tactical School in Sept. 1926.

On January 13, 1932, General Westover was appointed Assistant Chief of Air Corps, and was designated Chief of Air Corps Dec. 24, 1936. He was killed in an air crash near Burbank, Cal., Sept. 21, 1936.

# ALERT

## The Story of Westover

### TABLE OF CONTENTS

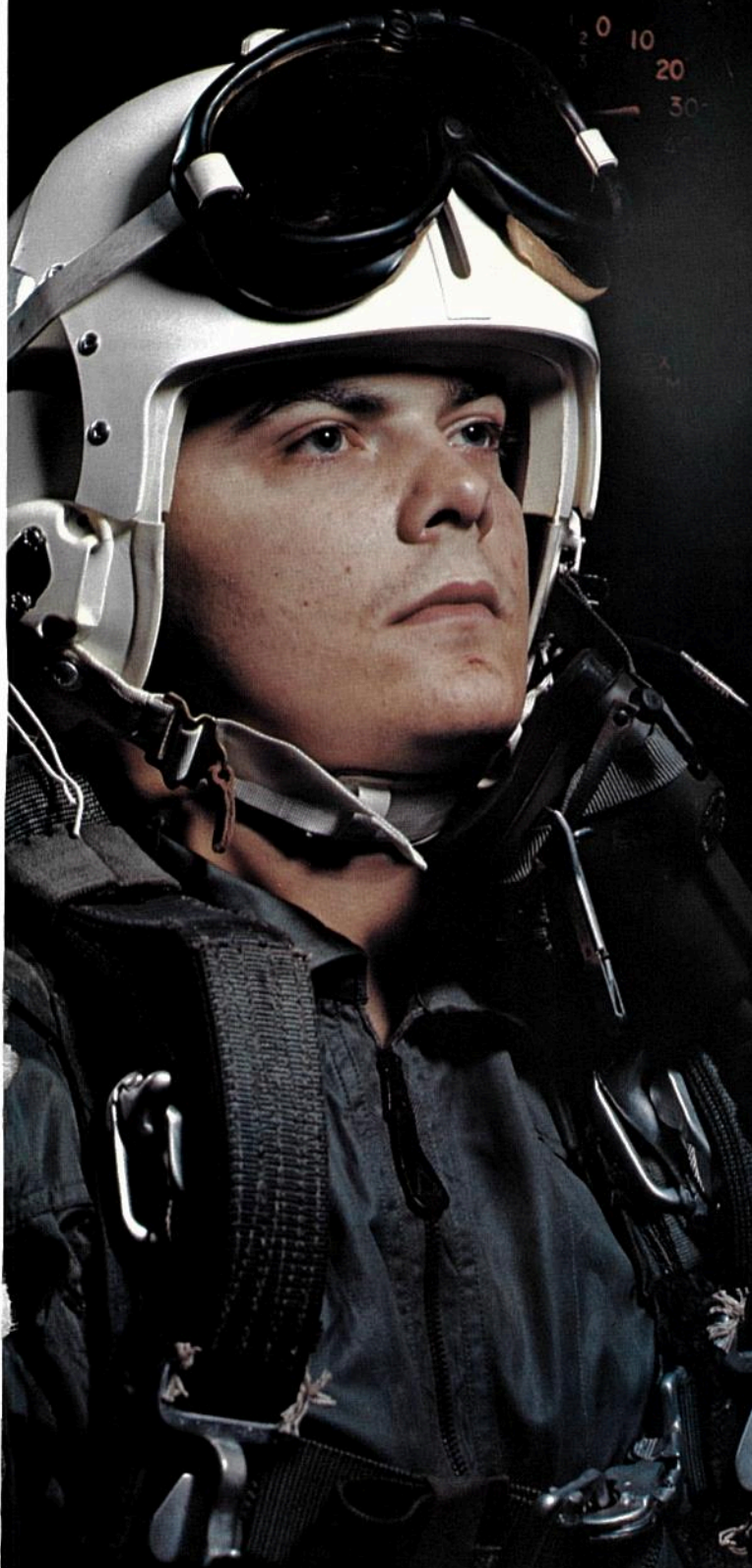
Mission Statement . . . . .	3
Story of Westover . . . . .	4
99th Bomb Wing . . . . .	6
Combat Support Group . . . . .	10
Tenant Units Supporting the Mission . . . . .	13
USAF Regional Hospital . . . . .	14
905th Military Airlift Group . . . . .	15
3501st Recruiting Group . . . . .	16
819th C. E. Squadron . . . . .	16
Air Force Band of the East . . . . .	17
On Your Arrival . . . . .	18
Local Transportation . . . . .	20
Things to Remember . . . . .	21
Family Information . . . . .	22
Base Exchange Facilities . . . . .	23
Education Services . . . . .	24
Chapel Activities . . . . .	26
Westover's Clubs . . . . .	27
Recreation . . . . .	29
Our Neighbor in the Pioneer Valley . . . . .	33
Senic Massachusetts . . . . .	37



The crewmembers rush in response to the alert klaxon horn to their waiting B-52s. 99th Bomb Wing crews are on alert 24 hours a day always ready to launch their aircraft should they be ordered to do so.

This unofficial guide has been prepared in the interest of new Westover personnel. The purpose of the guide is to give an insight into our people and mission as well as the facilities and services available.





The mission of the 99th Bombardment Wing is to organize and train a force capable of immediate and sustained long-range offensive bombardment operations on a global scale, utilizing the latest technical knowledge, advanced weapons and procedures. Also included is the performance of those tasks assigned in current emergency plans and related operations orders.

LANDING GEAR

LEFT TIP

FWD MAIN

REAR MAIN

100 KNOTS  
MAXIMUM DURING  
EXTENSION  
150 KNOTS MAXIMUM  
DURING RETRACTION

LEFT FWD

EMERGENCY  
M

RIGHT

RETRACT



# The Story of Westover

Like black, prehistoric birds, the planes sit on the concrete in what was a tobacco field 30 years ago. Nearby crews of the 99th Bombardment Wing are on Alert Duty, ready to respond at a moment's notice -- and get their big birds airborne in minutes.

The birds, B-52 Stratofortress bombers, and KC-135 Stratotankers are the backbone of the Strategic Air Command's deterrent force. The crews are dedicated professionals serving our country. The world has been able to avoid a nuclear holocaust for over two decades because potential aggressors know that SAC's striking power is always ready -- and they fear it.

However, Westover has not always been a SAC base. Its history dates to the birth of World War II.

Westover was activated on April 6, 1940. The formation of an air base in Chicopee was the result of the almost personal effort of Chicopee's mayor at that time, Anthony J. Stonina.

The federal government had called for the establishment of several air bases, among them a Northeast Air Base; after examining the "Tobacco Plains" site here, at Stonina's urging, the Army Air Corps chose Chicopee.

At the dedication and ground-breaking ceremonies, Brigadier General Barton K. Yount, assistant chief of the Army Air Corps, said "it is an Air Corps tradition to name our stations in honor of our departed heroes. Because of the importance we attach to this new station, it is named in honor of Major General Oscar Westover, the first Chief of the Air Corps."

General Westover was killed near Burbank, Cal., a year and a half earlier when his Northrop attack plane crashed from an altitude of 400 feet as he attempted to land.

Since the dedication day in 1940, Westover has become the largest Air Force base in the eastern United States. From the beginning, its image as a bomber base was established; a B-18 was the first Air Corps plane to land at Westover.

During World War II the base served as a training and overseas transition station. From January to November 1943, the principal activity was the training of fighter pilots, but the vital role of the base during the war was the training of bomber crews for B-17 and B-24 aircraft.

From 1946 until the arrival of the Strategic Air Command in 1955, Westover operated under the Military Air Transport Service, serving as one of the largest freight and passenger terminals in the eastern United States. During the Berlin Blockade of 1948-49, Westover was the staging area for the greatest airlift of supplies to Europe since World War II. During the







327-day blockade of the German capital by Russian occupation forces, supplies and food airlifted into the city were a mainstay in preventing its collapse before Communist pressure.

The Strategic Air Command came to Westover on April 1, 1955 with the activation of the 4050th Air Refueling Wing. In conjunction with this move, Headquarters Eighth Air Force moved here from Texas in June, 1955 and was a tenant unit until its inactivation, in 1970.

The first B-52 bombers arrived in the fall of 1956 with the transfer to Westover of the 57th Air Division and the 99th Bomb Wing. Headquarters 57th Air Division was assigned here in 1956 and remained until July 1969 when it was inactivated.

Today the wing includes squadrons of Boeing B-52 Stratofortresses and KC-135 Stratotankers in support of SAC and Air Force missions. Also incorporated in the wing are the 99th Combat Support Group and the USAF Regional Hospital.

As home of the 99th and host to ten tenant units, Westover is an integral part of the New England economic community. Employing approximately 5,000 military and 850 civilian personnel, the base has an annual payroll of over \$57 million. Military pay in 1970 amounted to \$31 million and civilian pay was \$10 million.

In addition, Westover spends over \$1 million monthly in the local area to purchase goods and supplies. The value of Westover's equipment and real property is over one-half billion dollars.

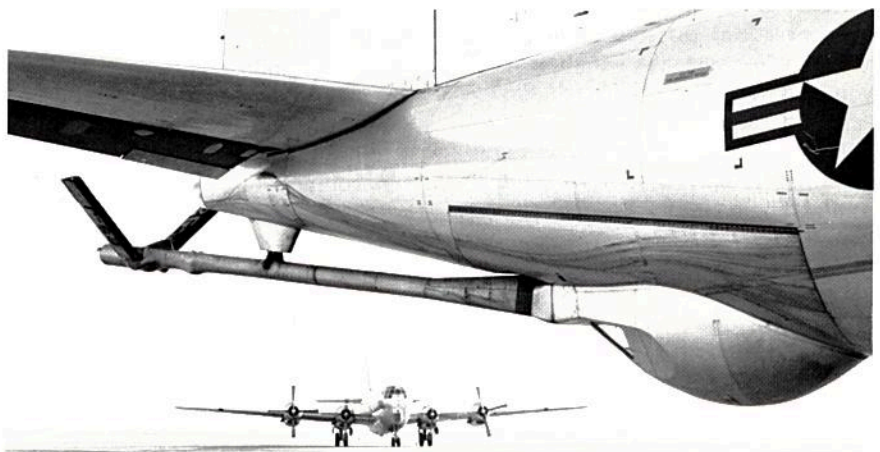
To support this vast military enterprise and the total base community, including dependents, of almost 20,000 people, Westover's monthly electric bill is \$60,000. Her water bill is \$5,000. Her heating bill is \$40,000. And a \$4,000 telephone tab rounds out the small bills.

As the largest Air Force base in the East, Westover covers 4,717 acres of land. There are 2,171,667 square yards of airfield pavement and 485,000

square yards of sidewalks, parking areas and curbing.

Westover has over 1,000 buildings. The flightline area includes 32 hangar structures for aircraft maintenance and storage. The base also has fuel storage capacity for almost 5.5 million gallons of aircraft fuel.

Westover continues today the distinguished history of being a landmark in the defense structure of our nation as part of the Strategic Air Command's deterrent force. Bombers and tankers are on ground alert at all times, ready to respond should the signal be given. The base and all its personnel work to make a daily reality of SAC's motto: "Peace is Our Profession."



The KC-97 was the primary refueling aircraft for SAC and the forerunner of the KC-135 used today.



# 99th Bombardment Wing

Peace is our profession. Caveant Aggressores is our motto. Long and distinguished is our history. Difficult is our job. But we work with the proud strength that comes from true dedication to the defense of our nation and our way of life.

That is a member's description of the 99th Bombardment Wing—a Strategic Air Command unit dedicated to deterring general nuclear war but with the demonstrated capability of delivering conventional ordnance "on target" in contingency operations.

The wing has almost 5000 personnel and is composed of operations and maintenance units, a combat support group, and a USAF regional hospital.

Serving directly under the 817th Air Division, the 99th Bombardment Wing has an outstanding record which dates back to World War II when it won battle honors for action in Normandy, Tunisia, North and South France, Sicily, the Po Valley, and other parts of the European Theater.

This outstanding record has seen the wing twice decorated with the Presidential Unit Citation; personnel of the wing have earned the Air Force Outstanding Unit Award on three occasions for operations connected with the Vietnam War while assigned with the Third Air Division, now Eighth Air Force.

The wing has been awarded a place in the SAC Hall of Fame for accident-free operations on several occasions. While at Westover, the wing has twice won the Air Force's coveted Payne-Jennings trophy. In 1963 the wing won the Major General James C. Selser Memorial Trophy as the outstanding bombardment unit in Eighth Air Force. The Sweeney Trophy was awarded to the 99th in 1969 for being the best bomber unit in Eighth Air Force.

The original 99th Bomb Wing had a distinguished record in the European Theater during World War II. It was organized in June, 1942 at Orlando, Florida and departed for overseas duty in February 1943, reporting to a desti-

nation near Oran, Algeria. It was assigned to the North African Air Force, Strategic Command. Subsequent assignments took the wing to Twelfth Air Force (XII Bomber Command) and Fifteenth Air Force.

Throughout 1943 the 99th flew missions over Italy, Germany, southern France and Greece. The wing was commended for excellence by Major General Carl Spaatz, commander of Eighth Air Force and first Air Force chief of staff, and Major General James H. Doolittle, leader of the first low-level, daylight bombing raid on Tokyo.

During February and March 1944, the 99th Bombardment Group gained a reputation for bombing accuracy over Cassino, Verona and Turin, Italy. In the month of April, primary targets included aircraft plants in Austria, Hungary and Rumania. Throughout the remainder of 1944 and into 1945, the group bombed vital railways and oil refineries, including the famous raids on the Ploesti oil fields. Other targets included German marshalling yards and interdiction targets. The 99th flew its last mission in April 1945. It had amassed 395 missions in which more than 24,000 tons of bombs had been dropped. The 99th Bombardment Group (Heavy) was redesignated the 99th Bomb Group (Very Heavy) on November 8, 1945 and sent to Birmingham, Ala., with B-24 aircraft. The group was inactivated on June 27, 1949.

Reactivation came three years later. The 99th Strategic Reconnaissance Wing came into existence on January 1, 1953 and was provided the RB-36 (a reconnaissance version of the B-36 bomber) at Fairchild AFB, Wash.

The 99th Bombardment Wing came to Westover from Fairchild in 1956 and took delivery of its fleet of B-52 bombers.

Events of the wing during the next 10 years saw it incorporate the 499th Air Refueling Wing into its mission, increase its aerial refueling capability with the KC-135 Stratotanker, and take charge of the 814th Combat

Support Group and 814th Medical Group.

In 1966, the 99th Bombardment Wing began operations in support of B-52 operations in the Western Pacific as part of SAC's involvement in the war in Vietnam. Westover KC-135 tankers participated in refueling of both bomber and tactical fighter aircraft in Southeast Asia, while the bombers, rotating on a temporary duty basis, flew bombing missions as part of the combined SAC force. These 99th Bomb Wing aircraft consisted of only a small portion of the wing's total bomber and tanker force, as the wing continued with normal alert and training operations at Westover Air Force Base.

During September 1967 and 1968, the 99th Bomb Wing deployed to bases in the Western Pacific for six-month periods of temporary duty as the primary SAC unit flying B-52 conventional-bombing missions over Vietnam. The deployments were dubbed "Arc Light"; they involved some 2,400 aircrew and support people and both B-52 bombers and KC-135 tankers.

In March 1970, the 99th was again deployed to bases in the Western Pacific in support of "Arc Light."

Today, as its contribution to the SAC deterrent mission, the 99th Bomb Wing maintains bombers and tankers on ground alert at all times.

**B-52 crewmembers race down the alert tube during an alert.**







## Bomb Squadron Personnel

Bomb squadron personnel in the 99th Bomb Wing, fly the wing's B-52 bombers.

There are six positions in the B-52 Stratofortress: pilot, co-pilot, navigator, radar navigator, electronics warfare officer, and tail-gunner. All the positions are occupied by officers except tail-gunner. In fact, more than nine-tenths of the people are officers.

These personnel directly execute the mission of the 99th Bomb Wing. For seven days at a time, the flying crews go on alert status living by their planes and ready to go. The crews must be together at all times. They must be able to respond quickly when klaxon horns located over the entire base sound.

Following the period of alert, the crew will take a four-day break before beginning squadron duties. Squadron duties include the flying portion of training. Flight-training missions maintain the flying proficiency of the crews.

These dedicated SAC crewmembers are always ready for

instantaneous response to the call of the Commander-in-Chief -- of the United States or SAC.

## Air Refueling Squadron

The 99th Air Refueling Squadron's day to day operations include planning and executing proficiency missions which enable the crews to practice the various techniques used in aerial refueling.

The aerial refueling capability of the KC-135 is unlimited. Any aircraft capable of receiving fuel while airborne can be serviced by the KC-135.

The 99th ARS also maintains a ready alert posture in the event an emergency war order is sounded. These alert aircraft increase the range of the B-52s, giving them a global striking power, thereby completing a vital phase of our strategic deterrent force.

The squadron has supported the war effort in Southeast Asia by providing aerial refueling operations for B-52 bombers and an arsenal of tactical fighters. In addition the KC-135s have been used in the deployment of aircraft from stateside bases.





## Munitions Maintenance Squadron

The 24th Munitions Maintenance Squadron is under the Deputy Commander for Maintenance. Its mission is to receive, store, maintain, load, report and dispose of munitions for the wing. It also inspects, maintains, and repairs the B-52 weapons release systems, related testing equipment, and related transportation and loading equipment.

The 24th MMS is divided into a maintenance supervision branch and a munitions accountable supply branch as well as unit administration and training sections.

The munitions accountable branch is a supply unit. It is in charge of procurement and storage of munitions.

The maintenance supervision branch performs aircraft loading, AGE maintenance, and explosives ordnance disposal. In case of civilian emergencies involving explosives the 24th MMS helps the civil authorities upon request.



## Field Maintenance Squadron

The 99th Field Maintenance Squadron, the largest of the 99th Bomb Wing's squadrons, provides corrective maintenance of all aircraft assigned to Westover.

The squadron is divided into four specialty branches: propulsion, fabrication, aerospace systems and aerospace ground equipment. Each of the branches is essential in the support of the base's B-52 Stratofortresses and KC-135 Stratotankers.

The propulsion section is responsible for building, repairing, installing and inspecting all aircraft engines, while the aerospace systems branch concentrates its efforts on in-flight refueling, electrical and hydraulic systems.

The "skins" of aircraft are washed and treated by the fabrication division which also repairs life rafts and parachute systems. None of this would be possible without the support, in the form of mobile ground equipment, of the aerospace ground powered equipment branch.



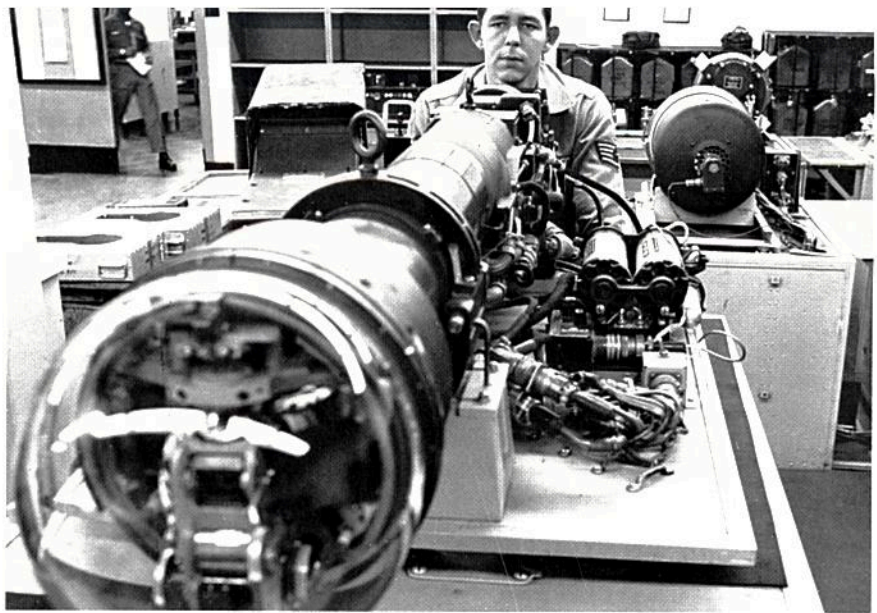
## Organizational Maintenance Squadron

The mission of the 99th Organizational Maintenance Squadron is to provide the personnel, tools and equipment necessary to insure top quality maintenance on Westover's assigned aircraft.

OMS is responsible for the quality of maintenance performed, for inspecting all aircraft, and, when necessary, calling on specialists from outside OMS to handle specific problems.

Many hours of work by the crew chief and his assistant precede a flight. Activities include oxygen servicing, specialist call-ins for repair of malfunctioning systems and a last look at all critical areas. When a flight is terminated, the OMS recovery crews refuel and inspect the aircraft, performing maintenance when necessary.

Through sincere devotion to duty and professional execution, aircraft of the 99th are ready for their assigned mission at all times.



## Avionics Maintenance Squadron

As electronics and firepower systems evolve so must their maintenance. This is as true for B-52s and KC-135s based on Westover as it is for the rest of the Air Force. The 99th Avionics Maintenance Squadron does the job.

There are 11 primary sections and functions in AMS. Maintenance Supervision is the command post for the entire operation. Bomb Navigation maintains B-52 bomb equipment and ECM provides reliable electronics countermeasures systems. Fire Control is responsible for the upkeep of B-52 fire control systems, specifically, 50 cal. machine guns. Analysis keeps and interprets aircraft records.

Production control keeps track of people available for shop work using control and scheduling methods. Radio maintains and inspects aircraft communications systems. Auto Pilot keeps up equipment providing stability and proper heading for B-52s and KC-135s.

Nav is responsible for organizational and field maintenance of most radar navigation equipment. Precision Measurement Equipment Laboratory (PMEL) calibrates precision measurement devices.

The 99th AMS is working with the flight crews and other maintenance squadrons to keep the Westover deterrent force ready -- on the ground and in the air.





# 99th Combat Support Group

The 99th Combat Support Group provides the "Power Behind the Power" for the 99th Bomb Wing: the USAF Regional Hospital, Westover; and the large variety of other organizations based at Westover.

Largest organization on the base, the support group maintains over 1,000 buildings; 88 miles of roadway; 4,700 acres of land; 31 hangars; and over 2 million square yards of airfield pavement.

The 99th Combat Support Group includes six squadrons and a WAF squadron section. However, the variety of duties performed by the combat support group exceeds the number of squadrons assigned by tenfold.

Such important functions as the supply of fuel for all of Westover's aircraft and the security of this Strategic Air Command installation are among the group's duties. It also provides personnel functions for tenant units.

Other functions of the combat support group include civil engineering, accounting and finance, legal services, materiel and supply functions, security and law enforcement, transportation, food service, exchange and commissary services, education and religious activities.

Among the more unusual functions of the combat support group are those performed by its four-legged members, the German Shepherds assigned to the Security Police sentry dog unit. These canine "airmen" patrol sensitive areas of the base and are alert to warn their handlers of potential sabotage acts.

The group also operates the recreation facilities of the base, including the Officers and NCO clubs, the theater, bowling alleys and the Service Club.





## 1917th COMM

1917th Communications Squadron is an element of the Air Force Communications Service. With approximately 90 people, it operates and maintains air traffic control and navigational facilities and the Military Affiliate Radio System (MARS) at Westover.

The Flight Facilities Section, the focus of squadron activity, operates the control tower and the Radar Approach Control Center (RAPCON). The men and women in the control tower give takeoff and landing clearances to aircraft. RAPCON men monitor and direct all planes flying in or through the air space around Westover, and, in cases of poor visibility, "talk" aircraft to safe landings.

The maintenance section keeps in operation all navigation aids, radar and radio communications for the squadron, and two teletype machines.

The MARS station at Westover operates a backup communications system for use when the primary network becomes overworked or in the event it should fail. MARS can also send messages for individual military people or their dependents via shortwave hookups between amateur radio operators.

All personnel are invited to use MARS service to pass messages to relatives and friends both military and civilian. Radio amateurs and MARS members are also invited to join the MARS station support group.

## 227C Field Training Detachment

Supporting the Strategic Air Command training requirements on Westover AFB are the commander and his staff of 13 enlisted men and one civilian of the 227C Field Training Detachment.

Each man is an instructor trained in one or more technical specialties of the B-52 Stratofortress or the KC-135 Stratotanker. He is on call to SAC to render assistance wherever possible.

The 227C FTD is attached to the 3346th Field Training Squadron at Chanute AFB, Ill.

## SACMET

The SAC Management Engineering Team, established at Westover in 1961, was formerly known as the Manpower Validation Team. SACMET develops and maintains manpower standards, provides manpower services and, upon request, provides management consultant services for local organizations with management problems.

The original team of two officers and three NCOs has grown to two officers and eight NCOs. During its time here SACMET has studied almost all the major functions on Westover. SACMET members share mathematical and managerial aptitudes, and have had a record of outstanding performance in their career areas.

## 99th WAF Squadron

Westover has a large WAF (Women in the Air Force) Squadron of about 185 women. WAF work in many different career fields. At Westover, their work areas range from security police to base supply, from finance to the



hospital. Women are assigned to the bomber and tanker alert facilities, and the control tower as aircraft controllers. They work in weather, personnel, recruiting, data processing, communications, administration, and many other varied fields.

The WAF Squadron is unique, in that every WAF, besides being assigned to the WAF Squadron, is assigned to a duty squadron dependent on her duty assignment. The duty squadron takes care of all matters pertaining to her work performance, OJT, etc., while the WAF Squadron is concerned with personal counselling, dormitory life, appearance and conduct, health and welfare, and general off-duty supervision.

## Det 10 Weather

Detachment 10, 26th Weather Squadron, is more commonly known as the Base Weather Station. Its primary mission is to support the 99th Bombardment Wing with observations and forecasts for alert crews, training missions, and overseas flights. Other "customers" are the 905th Military Airlift Group, transient aircrews, base operating agencies, and reserve units throughout New England.

The detachment is divided into three main sections: the observing section, the forecasting section and the maintenance section.

The observing section keeps a 24-hour a day weather watch and transmits observations every hour and special observations as required. The section is supported by an expensive collection of observation gear.

The forecasting section fits available weather information to the needs of the various users. Information pours in from facsimile circuits which provide 200 charts daily from military and civilian weather centers, as well as pilot reports, teletype circuits, radar, and weather satellites. The most familiar scene of activity is the briefing counter where flight crews receive detailed briefings for proposed flights. Military personnel may obtain an up-to-date forecast by dialing 2781.

On call 24 hours a day, the maintenance section makes daily checks of all weather observing equipment. They must, also, be able to spot any malfunctions. This is Detachment 10, 26th Weather Squadron.



# USAF Regional Hospital



The years since World War II have brought dramatic changes in the field of medicine. Increased specialization, the need for more highly trained personnel, the availability of complex and expensive equipment, and greater workloads are some of the forces that have caused hospitals to evolve into dynamic centers for preventive, diagnostic and curative health services.

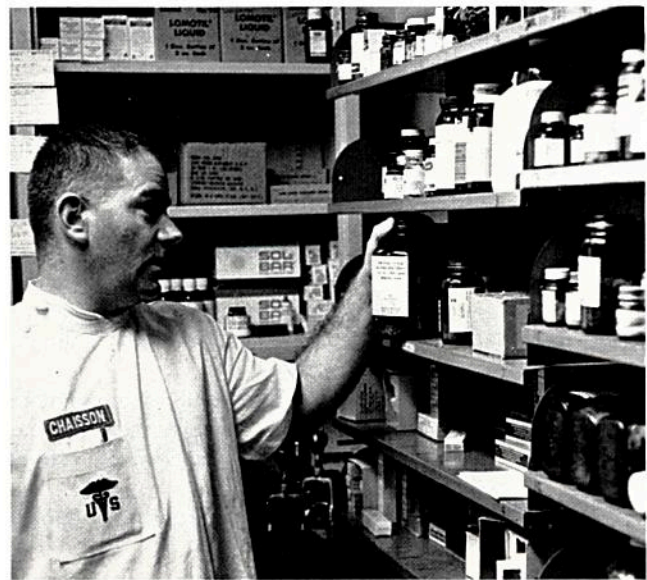
The Westover composite facility, the United States Air Force Regional Hospital, is a fine example of this hospital development. From a wooden, cantonment structure, the Regional Hospital has evolved into one of the most modern medical facilities in the Air Force with a value of over three and a half million dollars and a staff of nearly 400 physicians, dentists, nurses, technicians, corpsmen, and administrators.

The mission of the base hospital as stated by its commander, is "to provide medical services, including the care and treatment of patients from tactical units, the medical community, and other authorized persons."

Built in 1956, the present hospital building includes four inpatient nursing wards: a dependents' ward, obstetrical ward, surgical ward and medical ward. It has a complete operating suite including three operating rooms, recovery room and central supply. Obstetrics facilities include a delivery suite with three delivery room and a large, well-equipped nursery. Supplementing all this is the medical laboratory, x-ray department, pharmacy, and physical therapy department.

Across the street from the hospital building is the base Dental Clinic, also completed in 1956. One of the largest dental facilities in the Air Force, the clinic offers treatment in oral surgery, periodontics and postodontics as well as routine dental care. It also includes a complete dental laboratory.

Both the hospital and dental clinic are fully accredited, the hospital by the joint commission on Accreditation of Hospitals, and the clinic by the Council on Hospital Dental Services of the American Dental Association.



The Regional Hospital exists for only one purpose – to serve our Air Force community by providing the finest medical care possible, quickly, courteously and professionally.

## Veterinary Services

Immunizations for pets under leash and control are available to base personnel on Mondays through appointment only, Bldg. 5746, Ext. 7306.

Treatment of sick animals and all surgical procedures have been discontinued by the Department of Defense. All animal pets over three months old must be immunized against rabies annually to be eligible for base registration. Animal bite wounds should be reported immediately to the Hospital. Information should be obtained on the attacking animal to help determine if the animal is rabid. Every effort should be made to obtain a description of the animal, the owner's name, address and phone number.



# 905th MAG

A little known, yet vitally important, element of Westover is the 905th Military Airlift Group, an Air Force Reserve unit.

The 905th MAG's mission is to train its personnel for combat readiness and to provide world-wide transportation for troops, equipment and supplies, including air evacuation within a war zone.

Nearly 1,000 people constitute the 10-squadron complement of the 905th MAG. The group's 8-man crews fly C-124 cargo aircraft on eight to 10 live airlift missions a month, accounting for as many as 500 hours flying time.

The history of the 905th MAG began at Bradley Field, Conn., April 8, 1958, under the auspices of the 94th Military Airlift Wing at L. G. Hanscom Field, Mass. The move to Westover took place in 1966 when the outdated C-119s were abandoned for the larger C-124 aircraft.

The role of the 905th MAG is important to note because of the current situation in Southeast Asia. Although the group's active-duty potential has never been called upon, it's reserve power has helped alleviate the serious strain on MAC's strength. Every base from Vietnam to Alaska to the Azores has a place on the 905th schedule.





# 3501st USAF Recruiting Group

The 3501st U.S. Air Force Recruiting Group at Westover AFB controls one of seven Air Force recruiting groups in the United States. The 3501st is responsible for Air Force recruiting in New York State and in the six New England States, an area of some 92,791 square miles.

The local group headquarters directs the activities of six detachments within this area and all together includes a force of 435 officers, airmen and civilians. Detachment 101 is located at Garden City, L. I.; Detachment 102, Scotia, N.Y.; Detachment 103, Syracuse, N.Y.; Detachment 106, New Haven, Conn.; Detachment 109, Boston, Mass.; and Detachment 110, Manchester, N.H.

The 3501st provides approximately 15% of the total military accessions in the United States Air Force every year, recruiting for a variety of individual programs including prior and non-prior service men, WAF, nurses, medical specialists, lawyers, pilots, navigators, and other Officer Training School candidates, both men and women.

To meet annual objectives, 3501st recruiters operate a fleet of 235 vehicles and man 112 recruiting offices. The Group area contains a population of more than 30 million people and includes 2,225 high schools, 161 nursing schools and 201 accredited colleges.

To communicate effectively with prospective future members of the Aerospace Team, recruiters make excellent use of the 467 radio stations, 781 newspapers and 57 television stations throughout the New York and New England areas.

On July 1, 1970, the 3501st celebrated its 16th anniversary of recruiting in its present area. The Group was initially established at Mitchell Field, N.Y., where it began operations in July 1954. In April 1961 the Group moved to Stewart AFB, N.Y., where it remained until December 1969 when it relocated to its present position at Westover AFB.



## 819th Civil Engineering Squadron

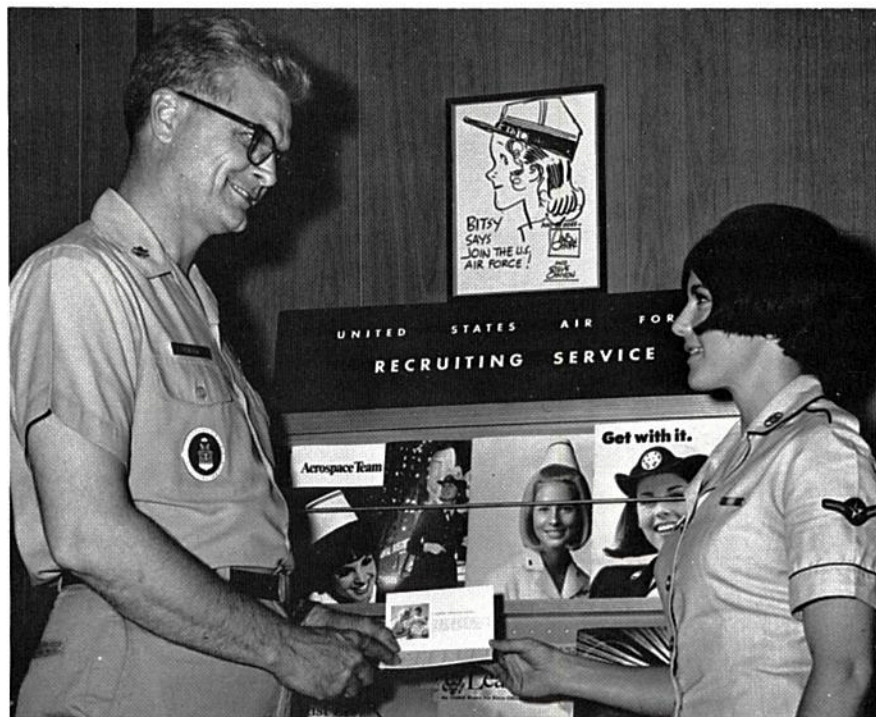
The 819th Civil Engineering Squadron (RED HORSE) left Tuy Hoa AB, Vietnam, in April 1970 for Westover as part of the redeployment of U.S. forces from Vietnam.

RED HORSE is an acronym for Rapid Engineer Deployable, Heavy Operations Repair Squadron, Engineer.

While in Vietnam the 819th completed construction and repair work on facilities valued at more than \$4 million. Construction included flightline parking areas, aircraft refetements, shop and aircraft maintenance space, aircraft shelters, dormitories and administrative facilities.

The prime purpose of the RED HORSE unit is to carry out maintenance and repair on Air Force facilities.

Headquarters for the 819th are located in the Stonybrook area of the base.







From classical masterpieces by such artists as Strauss and Schubert to toe-tapping tunes by John Philip Sousa, musical talent for Air Force ceremonies and concert tours throughout the eastern United States is supplied by the Air Force Band of the East.

Based at Westover the 35-piece band has the capability of performing as a concert band and a marching band. It also features a 27-piece swingphonic and dance band ensemble which occasionally supplies entertainment for Air Force dances and gatherings.

The band can also furnish smaller combos such as brass and woodwind ensembles.

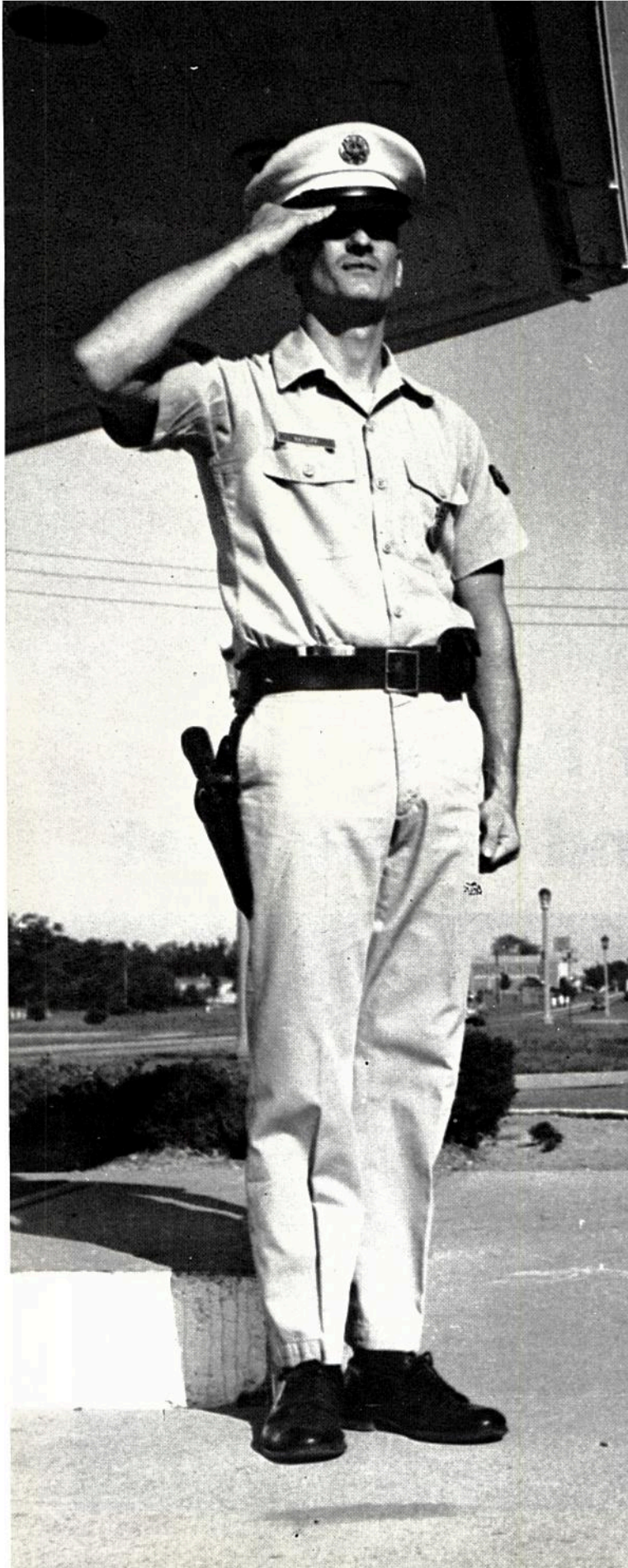
According to the band director, it is the band's responsibility to furnish the musical support for all Strategic Air Command bases stretching from Goose Bay, Labrador, to Puerto Rico and as far west as Missouri. In addition, this musical organization appears throughout the New England States in support of many community relations programs for the U. S. Air Force.

During the past year the band appeared in New York to honor the Apollo 11 astronauts, at a Christmas concert tour of bases, and at the Eastern States Exposition.

## Air Force Band of the East







# ON YOUR ARRIVAL

Reporting In . . . . .	19
I.D. Cards . . . . .	19
Pets . . . . .	19
Billeting . . . . .	19
Local Transportation . . . . .	20
Firearms . . . . .	21
Motor Vehicles . . . . .	21
Speed Limits . . . . .	21
Auto Accidents . . . . .	21
Military Courtesy . . . . .	21
Dress . . . . .	21
Restricted Area Badges . . . . .	21





## **Reporting In**

Airmen and officers arriving at Westover for assignment to organizations of the 99th Bombardment Wing should report directly to the processing unit of Base Personnel. Here personnel will be given their incoming clearance and notified of their squadron assignment.

Those arriving after duty hours report to the Base Billeting Office, Bldg. 2200, for registering and billeting. They should report to the Staff Duty Officer at Bldg. 5620 to sign in. They must then report to the Base Processing Center on the following work day at 7:45 a.m.

Personnel assigned to non-SAC tenant units will report to the orderly room of their organization. The location of the various tenant unit orderly rooms is available by contacting Security Police Headquarters or the charge of quarters, located in base headquarters.

## **Identification Cards**

Military Identification Cards are required for assigned military personnel and their dependents 10 years of age or older. Applications for identification cards may be obtained at the Personal Affairs Office. Completed applications must be hand carried to the Pass and Registration Section where the identification card will be manufactured and issued.

## **Pets**

Domestic animal pets may be kept on base provided they are registered at the Base Police Registration and Identification and have received the required inoculations as specified by pertinent base regulations and the veterinarian's section.

## **Billeting**

The Base Billeting Office stands ready 24 hours a day to

accommodate personnel requiring quarters when they arrive at Westover.

Government quarters are available for bachelor officers or married officers not accompanied by their dependents on a space available basis. Assignment to bachelor and transient quarters is accomplished at the Base Billeting Office in Bldg. 2200. Quarters will be assigned in the order of application.

Visiting male and female officers who desire on-base quarters may also apply for billet at the Base Billeting Office.

Facilities are available for the quartering of female officers, PCS.

Married personnel arriving at Westover with their families may apply for family housing at the Base Housing Office. Advance applications are not accepted.

Officers arriving with their dependents may reside in the Visiting Officers Quarters on a space available basis. Enlisted personnel in the grade of E-4 over 4 and above accompanied by dependents are authorized guest housing for a maximum of seven days, but space is severely limited and is assigned on a "first come-first served" basis. Reservations for any month in Guest Housing are taken beginning with the first day of the previous month. Incoming personnel should note that off-base housing can be considered expensive. Motels in the area usually cost not less than \$10.00 per day for two persons.

Located in Bldg. 4900 is a Housing Referral Office which maintains listings of available rentals in the area and will assist incoming personnel in obtaining quarters.

Westover has no trailer spaces. Trailer courts in the nearby area are extremely limited, as are the number of spaces available. Advance reservation for trailer court space is recommended.



# Getting Here and There

## Airlines

Bradley Field, located in Windsor Locks, Conn., is the major commercial airport serving the Springfield area. The major airlines are: American Airlines, Allegheny Airlines, Eastern Airlines, Mohawk Airlines, Trans-World Airlines, and United Airlines.

## Base Bus Service

The Base Motor Pool operates a shuttle bus system from 6 a.m. to midnight. These buses operate on a 15-minute schedule. Bus stops are located near all facilities, i.e., Hospital, BX, Service Club, etc.

## Bus Lines

There are four major bus lines serving the Springfield area. The Greyhound Bus Depot is located at 1780 Main St., Springfield, and information on the schedules may be obtained at 781-1500.

The Interstate Bus Corp. operates their schedule bus runs through upper New York State, and the New England area. The Interstate Bus Terminal is located at 1780 Main St., Springfield, and information may be obtained at 739-2551.

Direct connection for Boston and other New England areas is scheduled at the Peter Pan Bus Line located at 1780 Main St., Springfield. Information and reservation may be obtained at 781-2900.

Buses to New York, Washington and points south, and Lowell, Hampton Beach, Portland and points north, are available at the Trailways Bus System, located at 1780 Main St., Springfield. The phone number is 781-2900.

## Railroads

There are three railroad companies serving the Springfield area. They are the Boston and Albany Railroad, the Boston & Maine Railroad and the New Haven Railroad, all of which are located at the Union Station in Springfield. Information and reservations may be obtained for the three railroads at 734-7341.

### WESTOVER BUS SCHEDULE

#### HOLYOKE CITY HALL TO WESTOVER

*6:15 a.m.	Buses Leave City Hall
*6:45	Then via Dwight St. Race,
*7:10	Mosher, Ely, No. Bridge St.
*8:10	Over County Bridge, Main
*8:40	St. So. Hadley Falls, Ludlow
*9:30	Rd. Montcalm St. Britton to
*10:30	Westover Field, then via
*11:30	Central Ave. Inner Dr.
12:40 p.m.	First Ave. Collins, Third
4:25	to Chicopee Falls.
5:40	

#### WESTOVER TO HOLYOKE CITY HALL

*6:20 a.m.	Buses leave from BX on
*7:00	Collins St. via Collins St.
*7:25	First Ave. Inner Drive,
*8:00	Central Ave. out Fairview
*8:40	over County Bridge to
*9:30	Holyoke via No. Bridge, Ely St.
*9:50	Mosher, Main, Appleton St. to
*10:50	City Hall.
*11:50	
1:25 p.m.	
5:10	
6:25	

#### WESTOVER TO CHICOPEE FALLS

*6:25 a.m.	Buses leave from the
*6:55	Holyoke Gate, via Central
*7:25	Ave. Inner Drive, First
*8:25	Ave. Collins St. Third
*8:55	Ave. Austin Rd., Anderson

*9:40	Rd. Industrial Ave. out
*10:40	Industrial Gate, Westover
*11:40	Rd. Granby Rd. Montgomery
12:55 p.m.	St. over Chicopee Falls
	Bridge, Main St. Church St.
4:40	
5:55	

#### CHICOPEE FALLS TO WESTOVER

*6:10 a.m.	Buses leave Falls Inn, via
*6:45	Church St. Grove St. Main
*7:15	over Chicopee Falls Bridge
*7:45	Montgomery St. Granby Rd.
*8:30	Westover Rd. Industrial Gate
	then via Industrial Ave.
*9:30	Anderson Rd. Austin Rd.
*10:30	Third Ave. Collins St. First
*11:30	Ave. Inner Drive, Central Ave.
1:15 p.m.	Out Fairview Gate thru S.H.
	Falls, over County Bridge,
	Ely St. Mosher, Main, via
	Appleton St. to City Hall
5:00	
6:15	

\*—Does not run on Saturdays.

No service on holidays.

#### FARE INFORMATION:

Holyoke to Westover—30 cents cash.

Chicopee Falls to Westover—30 cents cash.

Passengers may ride between any point in Westover to any other point in Westover for 20 cents cash.

Passengers will be picked up or discharged at any point along the route in Westover.

Information on bus service may be obtained at 532-6739.



## **Firearms**

Personnel residing on base must register privately owned firearms with the Security Police Pass and Registration Section within 72 hours after the firearm is purchased or otherwise acquired. Obtain firearms registration forms in your orderly room. Personnel residing in base family quarters may store firearms in their quarters. Personnel residing in barracks or BOQ must store their firearms in the Security Police Armory in Hangar 1. Personnel assigned to Westover who live off base or plan to use their privately owned firearm off base should contact local civilian law enforcement officials regarding registration requirements.

## **Motor Vehicle Laws**

Registration will be accomplished at the Security Police Pass and Registration Section within 72 hours after the vehicle is introduced on base. Requirements for registering an automobile are: Possession of a current operator's license, proof of ownership, minimum insurance of \$5,000/\$10,000 personal liability and \$5,000 property damage liability, and a valid safety inspection sticker.

Personnel desiring to register two-wheeled vehicles must show the registration official evidence of having successfully completed a course in the operation of this type of vehicle. Training and certificates of training are obtained from the 99th Bomb Wing Director of Safety.

Personnel are advised to contact the Staff Judge Advocate when in doubt as to the legality of their registration, license, and insurance documents. A synopsis of the Massachusetts Motor Vehicle Laws and Regulations is available in the SJA office located in building 1208.

Personnel assigned to Westover who register vehicles must read and become familiar with Base Supplement to AFR 125-14. It outlines in detail the rules governing the operation of vehicles on base. The military member is responsible for insuring his dependents are familiar with this directive.

In addition all personnel who own or operate a vehicle are encouraged to familiarize themselves with the motor vehicle laws of the Commonwealth of Massachusetts. Civil law enforcement agencies are constantly alert for improper registration of motor vehicles, operating a vehicle without a driver's license operating an unregistered vehicle, or operating without the required insurance.

## **Reporting Changes**

Changes in registration, ownership, plate number, insurance (cancellation or renewal) will be made known to the Security Police Pass and Registration and Identification section within 48 hours. Failure to comply may result in suspension of on-base driving privileges.

Each person stationed at Westover must read and become familiar with Base Supplement 1 to Air Force Regulation 125-14, which covers in detail the rules governing the

operation of privately-owned motor vehicles at this base. The military member is responsible for his dependents and will insure that they are familiar with this regulation.

## **Speed Limits**

The speed limit on base is 25 MPH on all roads except where otherwise posted. Extreme caution should be exercised while driving within the family housing area and children's play areas. When approaching a school bus, regardless of direction of motion, all motorists will come to a complete stop and proceed only after the bus resumes motion and all passengers are clear of traffic.

## **Auto Accidents**

In the event an automobile accident occurs on base, the Security Police desk sergeant should be notified immediately at Ext. 3000. The automobile should not be moved unless an emergency exists.

In the event of accidents off base, strict compliance to Massachusetts vehicle laws is advised and military personnel involved will notify their respective first sergeants.

## **Seat Belts**

Car owners are urged to procure and use seat belts. Insist that your passengers use them too.

## **Military Courtesy**

The military salute is a respectful salutation exchanged between two self-respecting members of the same honorable profession. It is the desire here at Westover that all officers exchange salutes, and all airmen salute officers.

It is also the policy here that all staff cars with insignia of rank showing be saluted.

## **Dress**

The service uniform will be worn during duty hours by all personnel except those whose duties necessitate the wearing of authorized fatigue uniform flight clothing, hospital or dining hall whites. All authorized uniform combinations may be worn off base in performance of duty or directly enroute to and from duty, from off-base residence.

Civilian clothing is authorized for wear by personnel during off-duty hours. However, it is expected that all personnel will exercise good judgement and choose civilian clothing appropriate to the occasion or activity. AFM 35-10, as supplemented provides further guidance.

## **Restricted Area Badges**

A splendid formula for staying healthy is staying in the right place. Restricted areas are the wrong place to be without proper credentials.

Restricted area badges are required for entry to restricted areas and should be affixed to outer garments only when the wearer is in the area.





# Serving You and Yours

## **Family Services**

The Family Services Program relieves emergencies and undue hardships of Air Force families, especially when first reporting or during the absence of the military member.

Westover's Family Services Center is located in Base Personnel, Building 5621.

Hours of Operation are from 9 a.m. to 4 p.m. Monday through Friday, phone Ext. 2939/2850.

The Center can furnish the following services:

1. Emergency household items.
2. Information on other Air Force Bases.
3. Emergency babysitting, emergency transportation.

## **Air Force Aid Society**

The Air Force Aid Society mission is to promote morale and welfare of Air Force personnel and their dependents by rendering assistance in the form of non-interest bearing loans and cash grants in emergencies. The local office is located in CBPO, Building 5621, Extension 2539/3984.

## **American Red Cross**

The office of the American Red Cross field director is Building 5633. The professional staff acts as liaison between military personnel, their families and Air Force authorities. The field director provides counseling service regarding personal and family problems, transfers, discharges and government benefits. He also assists in emergency leaves or extensions and makes available financial assistance.

The ARC office is open during the normal working days from 8 a.m. to 5 p.m. Phone 557-3814 or 557-2204. During the off-duty hours the worker on duty may be contacted through the base operator.

## **Household Goods**

Information on the shipment, arrival and storage of household goods may be obtained at the Commercial Transportation Office, Bldg. 1604 on Hangar Avenue, Extension 3138 or 3490.

Persons reporting to Westover, who have shipped goods, must check with the CTO as soon as possible. Government storage facilities for uncrated household goods are not available at this station.

## **Base Newspaper**

The Yankee Flyer is the unofficial base newspaper. Deadline for news copy is 12 noon Tuesday. The paper is distributed each Friday morning. The newspaper office is located in Bldg. 5641, phone extension 3309.

## **Commissary**

The base commissary is located on First Avenue in building 1714. The commissary is open five days a week and hosts a wide variety of food items for base shoppers. The Commissary is closed Mondays. Children between the ages of 6 months and 10 years are not allowed in the Commissary because of the limited space and extremely large number of customers.

## **Thrift Shop**

Operated on a volunteer basis by Air Force Wives as a service for military and civilian personnel on base, the shop carries articles from clothing, household goods and furnishings, to any type of personal equipment.

Personnel wishing to sell articles may utilize this facility by setting a price on the article to which 10 per cent service charge is added by the Thrift Shop.

It is located in Bldg. 2605 near the Base Theater and is open Monday through Friday 9:30 a.m.-12:30 Phone 593-3501.

## **Personal Affairs**

The serviceman's personal affairs should be kept in current status at all times. One of his most important files is his personal affairs file, consisting of birth certificates, marriage certificates, divorce papers, tax papers, life insurance policies, beneficiary designations, etc.

New arrivals may obtain information concerning their personal affairs status by contacting the Personal Affairs Section.

Assistance in such matters as dependents benefits, allotments, insurance, Children Have A Potential (CHAP) and other information is available to those requiring it.

## **Legal Assistance**

Legal assistance for all personnel and their dependents requiring aid in such matters as wills, debts, tax problems and other matters may be obtained by calling the Staff Judge Advocate's office, telephone number 2302, 2569, 2641, for an appointment. The office is located in building 1208, adjacent to the Base Theater.

Consultation of legal matters, is conducted Monday through Friday.

There is also a Judge Advocate on call every night and weekends. His name and phone number appears in the Base Daily Bulletin.



## **Snack Bars**

There is a snack bar located in building 5640. The hours of operation are 7:30 a.m.-4:30 p.m. Monday through Friday.

There is another branch located in the Base Supply, building 5375. The hours of operation are 9 a.m. to 4:15 p.m. Monday through Friday.

The Golf Course Snack Bar is open only from May through October. The hours of operation are 7 a.m.-10 p.m. Monday through Friday and 6 a.m.-8 p.m. on weekends.

The Youth Center Snack Bar is located in Building 5000. Hours of operation are 3-5 p.m. Tuesday through Saturday and 7-10:30 p.m. on Friday night. This snack bar is closed Sunday and Monday.

## **Beauty Shop**

The Beauty Shop is located in building 2301 and is open from 9 a.m.-6 p.m. Monday through Thursday, 9 a.m.-8 p.m. Friday and 9 a.m.-2:30 p.m. on Saturdays. Appointments may be made by calling 593-3491.

## **Barber Shops**

There are four Barber Shops located on the Base offering complete barber service. Appointments may be made by calling the listed numbers. The main barber shop is located in building 2323, phone 593-5508. The hours of operation Monday through Friday are from 8:30 a.m.-5:30 p.m. On Saturday the barber shop is open from 8:30 a.m.-1 p.m.

One barber shop is located in building 5639, phone 593-6647. The hours of operation are 8 a.m.-5 p.m. Monday through Friday. It is closed on Saturday and Sunday.

The Hospital Barber Shop is located in the main hospital, building 5700, and is open from 1-5 p.m., Monday through Friday.

## **Cleaners**

There are two laundry and dry cleaning plants on base. The Exchange Cleaners is located in building 2314. Hours of operation are from 9 a.m.-5:30 p.m. Monday through Friday and 9 a.m.-2 p.m. Saturdays. Another Exchange Cleaners is located in building 5670. Hours of operation are from 9 a.m.-5:30 p.m. Monday through Friday.

## **Main Exchange**

A beautiful new 25,000 sq. ft. Main Exchange was built and opened in 1969. Located across the street from the bowling alley, the Main Exchange is Building 5200, phone 593-5401. The hours of operation are 10:30 a.m.-5:30 p.m. Monday through Friday. The store is open on Saturday from 9:30 a.m.-6:00 p.m. and Thursday and Paydays until 8 p.m.

The Housewares Annex, Town & Country Store, and Toyland, in season, are divisions of the Main Exchange and are located in Building 2313. Operating hours conform to the Main Exchange.

The Snack Shop, a service store located in Building 2313, phone 593-5521, is open daily from 10 a.m.-8 p.m. Food, necessities, drugs, cigarettes and party snacks are stocked for the convenience of Westover personnel.

The Beverage Shop is located in Building 2313, phone 593-9843, and is open from 10 a.m.-9 p.m. daily.

The Hospital Exchange is located on the basement floor of the hospital, Building 5700, phone 593-9735. The hours of operation are 9 a.m.-5 p.m. Monday through Friday.

There is a branch located in Building 5640, phone 593-3644. It is open from 8:30 a.m.-4:30 p.m. Monday through Friday.

Stony Brook Exchange is located in Building P-808, phone 593-9626. The hours of operation are 9:30 a.m.-6 p.m. Monday through Friday.

For the convenience of Westover personnel a check cashing facility is available at the Main Exchange.

## **Exchange Office**

The Exchange Office is located in Building 2322. The hours of operation are 7:45 a.m.-4:45 p.m. Monday through Friday. The general manager may be reached at 593-5583.

## **Base Cafeteria and Snack Bars**

One branch is located in the Service Club, building 5550, phone 593-6937. The hours of operation are 6:45 a.m.-10 p.m. Monday through Friday and 9 a.m.-10 p.m. on Saturday and Sunday.

The cafeteria at Base Operations, Building 7090, phone 593-9674, is open seven days a week, 6 a.m.-11 p.m.

## **Service Station**

A well-equipped Service Station is located beyond the main rotary in building 1601, phone 593-3624. The Service Station is a member of the AAA. The station is open 7:30 a.m.-6 p.m. Monday through Friday and 8 a.m.-3 p.m. on Saturday. Appointments are required for week-day services and repairs.

## **Shoe Repair**

The base Shoe Repair Shop is located near the Base Library in building 2614 and is open for all types of shoe repair work from 9:30 a.m.-5:30 p.m. Monday through Friday and 10 a.m.-3 p.m. on Saturday, phone 593-6385.

## **Watch Repair**

A watch repair shop is located in the same building as the beauty shop, building 2301, phone 593-3460. This facility offers watch repairing, key making, plastic name plates, engraving and plastic laminating. The hours of operation are 8:30 a.m.-5 p.m. Monday through Friday.

## **Optical Shop**

The Optical Shop is located in Building 2614, phone 593-3820. The base exchange optician is open from 9:30 a.m.-5:30 p.m. Monday through Friday and from 10 a.m.-3 p.m. on Saturday.



# Dependent Schools

## *Secondary Education at the Chicopee Comprehensive and Chicopee High Schools*

The Chicopee Comprehensive High School has been established as the public high school for students living on base. The school is fully accredited by the New England Association of Colleges and Secondary Schools. This school, with an enrollment of over 2000, ranks among the foremost schools in the nation that truly encompasses all of the educational phases in being called a Comprehensive High School. Course offerings for Grades 9-12 include college preparatory math and science, liberal arts, a full commercial education program, a special program in distributive education, technical programs, and extensive vocational special programs. The latest equipment in Data Processing is available for administrative and instructional use. This modern plant, completed in 1962, offers high school students the very best in educational opportunities.

## *Offerings in the Evening Adult and Continuing Education Courses*

Extensive courses are offered in the Evening Adult and Continuing Education Program for the city of Chicopee. Course titles and descriptions are available during the months of September and January for all courses sponsored by the Chicopee Public Schools. Westover personnel are encouraged to participate in any of the offerings of this program.

## *Registration For All Schools*

It will be necessary for students to have current inoculation records, transfer cards, report cards, and birth certificates when registering at any of the schools. For special problems contact the Central Office of the Chicopee School System which is located at 141 Grape Street, Chicopee, telephone 594-4711.

The close relationship between Westover and the Chicopee Public Schools has been in existence for a period exceeding twenty-five years. The knowledge gained in servicing dependents of the Air Force has resulted in this system coping in the best possible fashion with the situation. The Chicopee Public Schools attempt in every way to provide all phases of every program to all children in the city.

## *Day Nursery*

A Base Nursery is maintained at Westover which is operated by qualified civilian and dependent personnel for all personnel and their dependents, residing on and off base.

Shot records are required for DPT and Polio shots started, depending on the child's age. Minimum age is six months.

Special rates for working and hospitalized mothers are also available.

## *Selser Memorial School*

Selser Memorial School accommodates students in Grades 4-5-6. In addition to an up-to-date instructional program, the school provides a background in basic skill subjects with enrichment through music, art, physical education, industrial arts, practical arts, and instructional music. Hot School Lunch Program, including mid-morning milk, is available for a nominal fee on a daily basis.

## *Sweeney Memorial School*

The Sweeney Memorial School contains Grades 6-7-8. The newest of the schools at Westover, it was completed in the fall of 1966 and is outstanding in both architecture and functional design. This building, referred to as a Middle School, contains many adaptive facilities for recent innovations in education, including special facilities for pre-vocational offerings for both boys and girls. Extensive facilities for music, art, physical education, industrial arts, practical arts, instrumental music, and a large library adequately service the educational needs of this school. Hot School Lunch Program is available.

## *Bowie Memorial School*

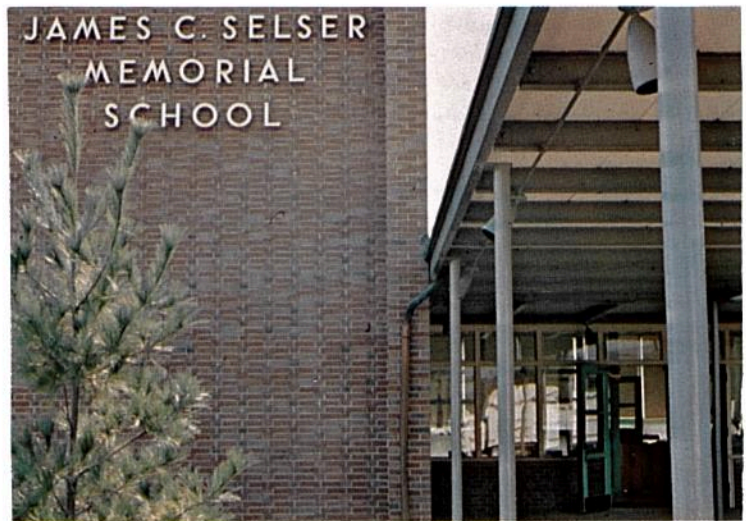
The Bowie Memorial School contains grades Kindergarten-3. The school, besides providing an up-to-date instructional program, also contains special facilities for physical education and a hot School Lunch Program.

## *Westover Pre-School*

Children of ages three and four, of base personnel may attend the Pre-School. Instruction by trained teachers includes games, basic art work and visual instruction.

A charge of \$20.00 a month is made for this school. There are two sessions held daily.

For further particulars phone 3407.





## Education Services

The Base Education Office is prepared to assist Westover personnel in any and all matters involving education from the reviewing of basic arithmetic to completing a college degree.

The scope of educational opportunities offered and assistance given includes the following.

Opportunity for learning is provided through USAFI correspondence and group study classes. Included under this program are courses in vocational-technical fields.

A large variety of both technical and academic subjects from elementary through college sophomore level are also included. One initial enrollment fee entitles military personnel on active duty to enroll in any course in which they are interested and for which they are qualified to do the work. The original fee allows a student to complete the series of courses without additional charge, contingent upon successful completion of each successive course.

Courses designed to increase knowledge and improve skills within specific AFSCs and to develop greater proficiency among airmen and officers are offered through ECI correspondence.

Under "Operation Bootstrap", Air Force personnel through individual initiative may complete requirements for a college degree. A student may complete work leading to a degree by attending full-time classes at the college of his choice under the six-months TDY provisions of "Bootstrap."

The Education Office arranges off-duty classes at both off-base and on-base schools in a variety of subjects on the basis of demand. Beginning dates are announced in the base newspaper and on bulletin boards. There is one school in the area which provides education on a private tutoring approach.

A testing service is also maintained through which military personnel may apply for and be administered a variety of tests including the high school GED and college CCT tests. A counseling service is available to help develop and plan a continuing program. High School diplomas may be obtained by completing procedures outlined by the Educational counselor.

## Westover's On-Base Colleges

Westover in conjunction with Western New England College and American International College in nearby Springfield, has developed an extensive on-base educational program for personnel at this installation.

Through the on-base programs, which are open to all military personnel, civil service employees and base dependents, one can obtain a bachelor of science in business administration, bachelor of arts in social science and a two-year associate of arts degree from American International College. Western New England College offers a master degree in business administration.

Full cost of a three-semester hour course is \$106.00 at American International College. However, the government will now pay \$79.50 of the eligible student's tuition and he will pay only \$26.50.

Full cost of a three-semester hour course at Western New College is \$47.00 per semester hour of \$141.00 per course of three semester hours. However, the government will pay \$105.75 of the eligible student's tuition and he will pay only \$35.25.

Military personnel planning to defray tuition costs can use the VA Education Allowances if eligible.

The off-duty college programs at Westover are provided to assist the individual to perform his Air Force job more efficiently, prepare himself for more responsible jobs and increase his chances for promotion.

Courses offered during a normal semester by American International include current economic problems, history of education, elementary French, college algebra, calculus, general psychology, personal psychology, and personnel administration.

Also, principles of economics, education, world literature, finance, rise of western civilization, trigonometry, survey of natural sciences, educational psychology and personnel administration.

English, report writing, law, principles of management, political science and a host of foreign languages are also offered.

Courses offered during a normal semester by Western New England College include Managerial Accounting I and II, Quantitative Methods, Management Information Systems, Marketing Management, Business Policies, Personnel Management, Financial Management, Taxation, and Behavioral Sciences.

Also, Production Management, Industrial Relations, Industrial Marketing Management, Managerial Economics, Management, Unions and Collective Bargaining and Quantitative Methods in Production, and a host of other Business and Management courses.

## Library

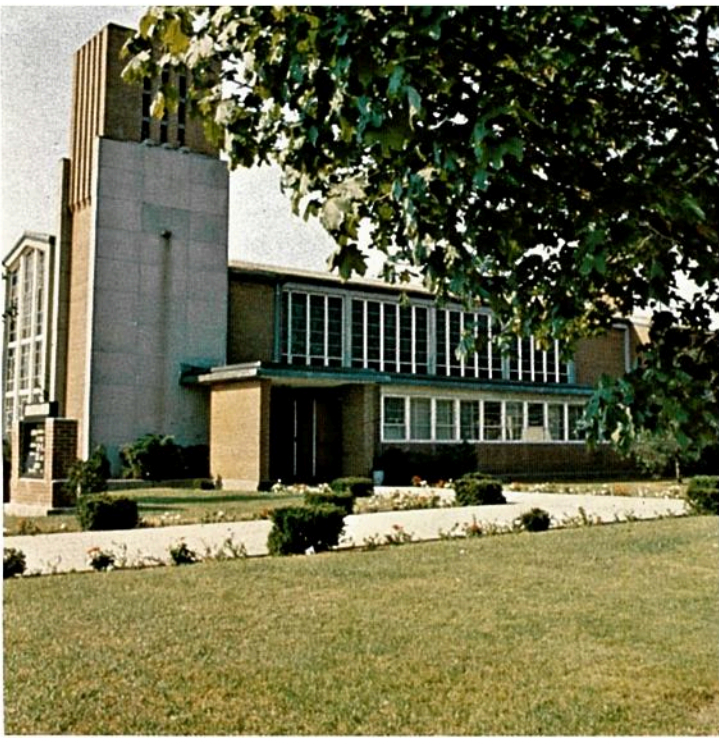
The Base Library offers service to military people, their dependents and civilians employed on the base. Located in Bldg. 2610, the library contains approximately 30,000 recreational and technical books, including a fine collection of children and young adult's books. In the reading room at the rear of the library a wide variety of magazines and newspapers are housed for the reading enjoyment of our patrons. Approximately 1,500 records are available for borrowing.

The library supports the on-base graduate and undergraduate college courses with reference and research materials for class assignments and term papers. For the educational and business graduate courses, there is an excellent selection of books and periodicals.

A story hour is held every Wednesday morning at 10 a.m. for the preschool children. During vacation time, there is a Children's Reading Program conducted by the library staff. For adults and children there is a music appreciation hour every Tuesday and Thursday from noon to 1 p.m.

The library is open every day of the year except from Christmas from 11 a.m. to 9 p.m., Monday through Thursday; Friday and Saturday from 11 a.m. to 6 p.m.; and Sundays and Holidays from 2-9 p.m.





# Chapel Activities

## Catholic

(Phone 2549 or 3346 for information)

### MASSES

#### Sundays

Chapel 1 . . . . . 8:45, 10:00, 11:00 a.m.  
 Chapel 3 . . . . . 10:00 a.m., 12:30 p.m.

#### Weekdays

Chapel 3 . . . . . 12:00 Noon

#### Saturdays (Sunday Liturgy)

Chapel 3 . . . . . 6:00 p.m.

Holy Days and National Holidays . . . . . As Announced

### SACRAMENT OF PENANCE (CONFESSIONS)

#### Weekdays

Chapel 3 . . . . . 11:40 to 11:55 a.m.

#### Saturdays

Chapel 3 . . . . . 4:30 to 6:00 p.m.  
 Any other time, upon request. If able, "call ahead".

### SACRAMENT OF BAPTISM

#### Sundays

Chapel 3 . . . . . 1:15 p.m.  
 By prior appointment. Call Ext. 2549 for information.

### SACRAMENT OF MATRIMONY

Arrangements must be made at least EIGHT WEEKS in advance.

### FIRST HOLY COMMUNION and CONFIRMATION

As announced

### SCHOOLS OF RELIGION (September through May)

#### Sundays

Kindergarten, Bowie School . . . . . 8:30 to 9:40 a.m.

#### Sundays

Grades 1 through 3, Bowie School . . . . . 8:30 to 9:40 a.m.

#### Sundays

Grades 4 through 8, Selser School . . . . . 8:30 to 9:40 a.m.

High School Classes meet every other Monday evening in Host Couples' Homes. Call Ext. 2549 for details.

### CHOIRS

#### Tuesdays

Children's (Grades 4-8) Chapel 3 . . . . . 6:00 p.m.  
 Teen-Age (Folk Choir) Chapel 1 . . . . . 7:30 p.m.  
 Adult Chapel 3 . . . . . 7:30 p.m.

### PARISH ORGANIZATIONS

Parish Lay Council, Chapel Annex . . . . . Monthly  
 Monthly

Confraternity of Christian Doctrine Executive Board  
 Chapel 1 . . . . . 7:30 p.m.

#### First Fridays

Catholic Women's Group Chapel 3 . . . . . 9:00 a.m.

#### Alternate Thursdays

CYO (High School Students) Chapel Annex . . . . . 7:30 p.m.

#### 3rd Sunday

Knights of the Altar Chapel Annex . . . . . 1:30 p.m.

## Protestant

### Sunday Worship Services

Chapel 3 . . . . . 9:00, 11:15 a.m.

### Junior Church

Chapel 3 Annex (Sept thru June) . . . . . 11:15 a.m.

Sunday School (Sept thru June) . . . . . 10:00 a.m.

Age 3 thru 2nd Grade, Bowie Memorial School

3rd Grade thru 9th Grade and Adult Study Group

### Selser Memorial School

### Protestant Youth of the Chapel:

#### Sunday

#### Junior, 7th and 8th Grade

Chapel 3 Annex . . . . . 6:00 p.m.

#### Senior, 9th thru 12th Grade

Chapel 3 . . . . . 6:00 p.m.

Young Adults . . . . . As Announced

### Protestant Men of the Chapel, Luncheon Meeting

3rd Wednesday . . . . . 12:00 Noon

### Protestant Women of the Chapel

4th Thursday, Chapel 3 Annex . . . . . 9:30 a.m.

### Choir Rehearsals:

#### Saturday

Junior Choir Chapel 3 Annex . . . . . 10:00 a.m.

#### Sunday

Folk Group, Chapel 3 . . . . . As Announced

#### Wednesday

Adult Choir Chapel 3 . . . . . 7:00 p.m.

### Denominational

#### Tuesday

Christian Science Chapel 3 . . . . . 7:30 p.m.

## Jewish

### Service and Convocation

#### Wednesday

Chapel 3 . . . . . 8:00 p.m.

(For further information, contact Jewish Auxiliary Civilian Chaplain - Home: 733-7455; Study: 736-3619.)