



# Westover Air Force Base

Massachusetts

WESTOVER AIR FORCE BASE, MASSACHUSETTS



1 October 1978

WELCOME TO WESTOVER AIR FORCE BASE

The personnel at Westover Air Force Base welcome you and extend their best wishes for an enjoyable stay. We hope the information contained herein will serve as a guide to the base, local facilities, and activities while you become familiar with your new surroundings. For your convenience, facility and business locations, hours of operation and telephone numbers are listed separately, along with a brief description of some of the services offered to Westover AFB personnel and their dependents.



## HISTORY OF WESTOVER AIR FORCE BASE

Named in memory of the late Army Air Corps Chief of Staff, Major General Oscar Westover, Westover Air Force Base began operations on April 6, 1940. Originally designed and built for the protection of the northeast, Westover has played many roles in the development of the airpower of the United States.

During World War II Westover served as a training and staging base. From 1946 to 1954 the base housed the eastern headquarters of the Military Air Transport Service (MATS). In 1955, the Strategic Air Command (SAC) assumed control of Westover and shortly thereafter Headquarters Eighth Air Force was established on the base.

SAC moved out in 1974 and since that time Westover has been the home of the Air Force Reserve 439th Tactical Airlift Wing.

## THE PRESENT ORGANIZATION AND MISSION

The Reserve 439th Tactical Airlift Wing and subordinate units are together a unique wing in the Air Force. The 439th maintains a capability to perform various wartime missions while being host of and operating Westover Air Force Base. Assigned to the wing are the 337th Tactical Airlift Squadron, flying the C-130B Hercules, and the 731st Tactical Airlift Squadron, flying the C-123K Provider. In support of these airlift squadrons are the 439th Combat Support Group and the 439th Tactical Hospital. The specific organization and command structure of the 439th TAW and the 439th CSG are outlined in Charts 1 & 2.

The mission of the 439th Tactical Airlift Wing is to provide command and staff supervision for all assigned or attached subordinate units. The 337th and 731st Tactical Airlift Squadrons provide tactical airlift support for strategic airborne forces, USAF special operations and SAC satellite support within presently authorized resources. Upon mobilization, the 439th Tactical Airlift Wing will be assigned to the Military Airlift Command and will perform such airlift and support missions as directed by MAC.

The 439th Combat Support Group operates and maintains the facilities at Westover Air Force Base. The Commander has command jurisdiction over the base in addition to providing administrative and logistical support to assigned and attached personnel. Since Westover is a USAFR-controlled facility, the 439th Combat Support Group will expand its base support capacity during emergency or wartime conditions.

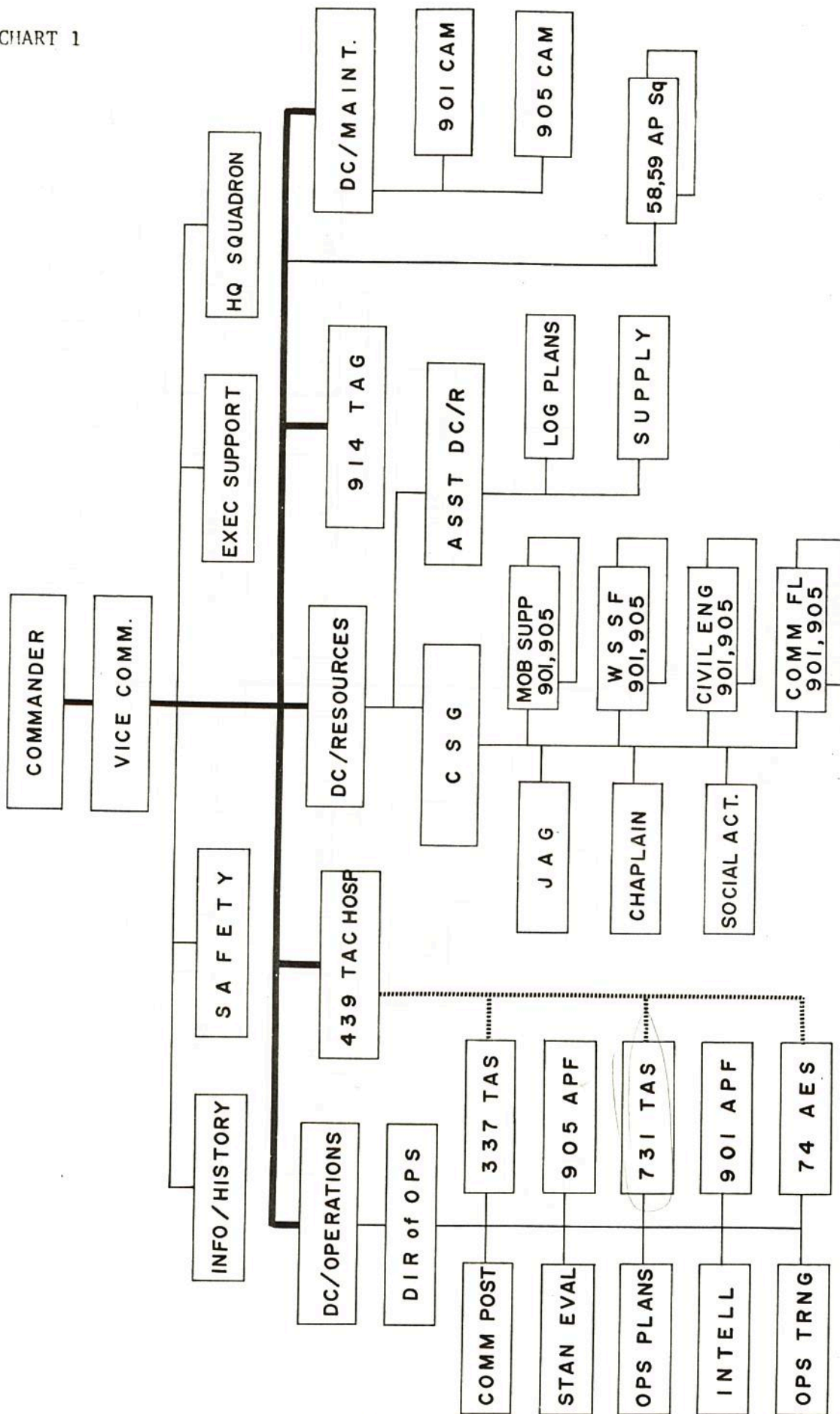
Base operation support is largely accomplished by a peacetime civilian force. Augmentation and expansion would be accomplished through activation of elements of the Combat Support Group who are organized and trained as part of the 439th Tactical Airlift Wing. Specific resource capabilities of the 439th Combat Support Group include: directing and supervising airfield management activities, transportation services facilities and equipment, installation and building maintenance, firefighting and aircraft crash rescue facilities, security police facilities, CBPO and Central Civilian Personnel Office, chaplain program, recreational, health fitness and social activities, provide a disaster preparedness program, justice administration to include exercise of special court martial-jurisdiction to maintain military discipline, prescribe administrative services, provide for statistical and program reporting services, and management analysis junctions, procure, maintain and manage supplies and services required by various units and personnel assigned/attached to Westover Air Force Base.

#### SPECIAL MISSIONS

The 439th Tactical Airlift Wing gives airborne support for the Fort Benning Army Basic Jump School. It also participates in tactical airlift operations in South America. The C-123K crews go to Panama for two weeks of duty, and their mission includes paratroop training, aerial mapping, and special humanitarian missions such as disaster relief. The C-130B crews support routinely the CONUS-wide SAC satellite basing concept. Because of the increase in Military Airlift Command activities the 439th TAW had picked up several missions; among them is the relieving of MAC's strategic airlift forces in the Atlantic/European regions. Other recurring strategic airlift missions are being organized and planned well into the future. The 439th Tactical Airlift Wing is a fully combat ready wing which can meet a nationally declared emergency at 65% the cost of a comparable full-time active duty wing.

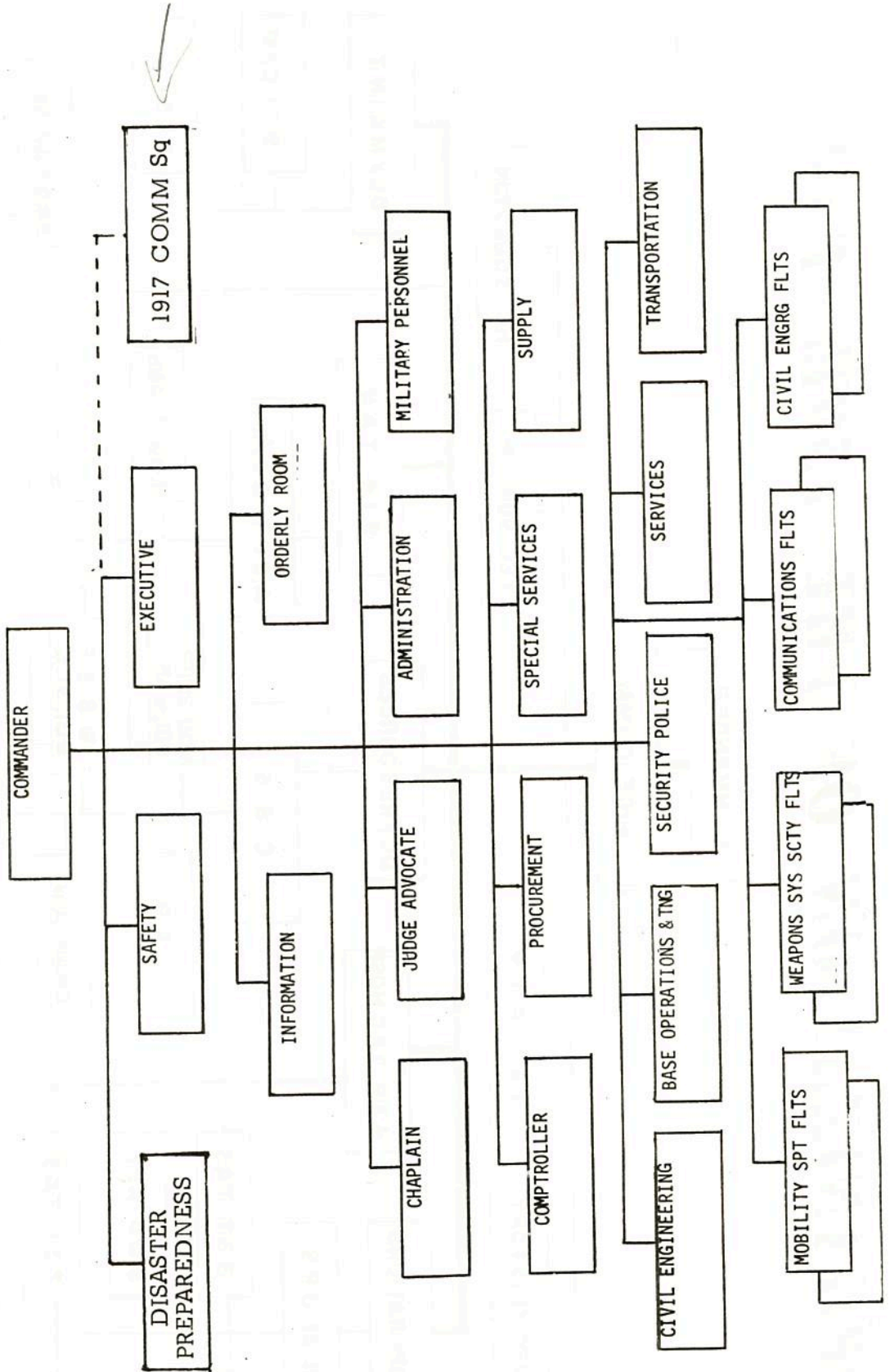
# ORGANIZATION OF THE 439th TAW

CHART 1



**Organizational Chart - Military**  
**439TH COMBAT SUPPORT GROUP**

**Westover AFB, MA 01022**





## UPON YOUR ARRIVAL

### Reporting In:

All incoming reservists arriving at Westover Air Force Base should report to the Consolidated Base Personnel Office (CBPO), located in BLDG 1850. Duty hours are 0745 to 1630, Monday through Friday. Incoming active duty personnel should report to their respective unit commanders.

### Motor Vehicle Registration:

Registration will be accomplished at the Security Police Pass and ID Section, in BLDG 1520, within 72 hours after the vehicle has been brought onto the base. Requirements for registering an automobile are: possession of a current operator's license, proof of ownership, safety inspection sticker from any state and a minimum insurance of \$5,000/\$10,000 personal liability. Personnel desiring to register two-wheeled vehicles must show the registration official evidence of having successfully completed a course in the operation of this type of vehicle. A vehicle owned by a member of the armed forces who has returned from abroad, which displays registration issued in a foreign country, may be operated for a period of 30 days after entry into the Commonwealth of Massachusetts for the purpose of traveling to his place of residence or to a point of military duty.

### Firearms Registration:

In accordance with Paragraphs 6-13, 6-14 and 6-15, AFR 125-37, owners of private firearms on Westover Air Force Base must register them within 24 hours with the Security Police, BLDG 1520. Firearms will not be stored in the BOQ or dormitories. They will be stored in the 439 CSG/SP armory, BLDG 1520. Firearms may be stored in base family quarters. Personnel living off base must obtain a Massachusetts gun permit from their local chief of police.

### Billeting:

The Base Billeting Office is located in BLDG 2200 and is open 0745 to 1630, Monday through Friday and on unit training assembly weekends. Incoming and transient personnel should report to the Security Police for help in obtaining over-night accommodations at hours other than those specified above.

### Base Housing:

The Base Housing Office is located in BLDG 4900 and will assign quarters on base, if available. The Base Housing Office will also assist in obtaining off-base quarters for incoming personnel.

## Restricted Areas:

Only a portion of the Westover Air Force Base facilities are open and accessible. A series of signs and barriers has been placed at strategic entrances to "off limit" streets/areas/structures. Unauthorized personnel apprehended in these restricted areas are subject to disciplinary action.

## SERVICES ON BASE

### Base Exchange Facilities:

*Hours?*

Those authorized the use of Base Exchange facilities and services are listed in AFR 147-14. Members of Reserve components on inactive duty, or on active duty for training for less than 30 days, must produce a copy of orders or an Earnings Statement (AF Form 1965) or a letter of authorization authenticated by their respective Unit Commanders if in a non-pay status. The main building is located on the corner of Anderson Ave. and Austin Rd. Hours of operation are 1030 to 1730 Tuesday through Friday, 0930 to 1630 Saturday and 1100 to 1700 Sunday. The Garden Shop and Barber Shop are located 1100 to 1700 Sunday. The Garden Shop and Toyland are seasonal and are located in the main building following the same hours as above. The Barber Shop also maintains the same schedule but is closed on Sundays. Also at the BX is a Cashier's Cage and a Customer Service Desk which handles check cashing (up to \$500), lay-a-ways and merchandise adjustments. They will also order merchandise not normally carried in stock but authorized to be sold through the BX. The exchange Service Station is located in BLDG 1601. Hours of operation are 1000 to 1700 Tuesday through Friday and 0930 to 1500 Saturday.

### BX Foodland:

This facility requires identification prior to being admitted to the store. People authorized to use BX Foodland include personnel on active duty for a period of more than 72 hours. Children are permitted in the store with a parent and checks will be accepted for purchases only.

### Consolidated Club:

Because of the small number of personnel at Westover Air Force Base, it would not be economically feasible to operate separate clubs. Therefore all personnel use one club, the Consolidated Open Mess. The club is a million dollar project, with a dining room serving breakfast and lunch 7 days a week, and dinner Tuesday through Sunday, a main ballroom, private meeting rooms, a formal and casual lounge, cashiers

office and package store. There are many activities planned throughout each month. Monthly dues are very reasonable and a full schedule of events and hours of operation can be obtained from the club.

#### Medical Aid Station:

Westover Air Force Base does not have a hospital, however the Medical Aid Station can handle minor problems and has sick-call for military personnel at 0800. Any emergency requiring an ambulance can be taken care of by calling EXT 3000.

#### Legal Office:

The Legal Office, located in Rm. 9 of BLDG 1850, EXT 3160, is open only on unit training weekends and during the annual tour. Reservists may call the Base Commander's office (557-2802 or 557-3044 to set up appointments. Active duty military personnel should contact the Legal Office at Hanscom Air Force Base (AUTOVON: 478-2361 or (617) 861-2361.

#### Social Actions:

Social Actions is an Air Force office whose function is to supervise the Base Drug Abuse Control Program and to help members of the Air Force and their dependents who encounter discrimination.

The drug abuse Control Office is responsible for educating Air Force personnel and their families on the hazards of drug abuse and helps them to cope with the problem if it should arise in their family.

The Race Relations Office is responsible for ensuring that grievances of discrimination due to race, religion or nationality are taken into consideration.

Social Actions is located in Hangar 3, Rm. 218, EXT 3546. The office is open only during UTAs and annual tours.

#### Chaplain Services:

Westover Air Force Base no longer has a full-time Chaplain service. However, full-time Catholic and Protestant chaplain services are available during Reserve UTA and Active Training Periods (439th Tactical Airlift Wing Schedule). A Rabbi is on call for Jewish personnel. The Chaplains' office is located in Hangar 3, Rm. 212, EXT 3031. Training weekend services, held on the second floor of BLDG 1408, are at 1600 Saturday for Catholic personnel. Protestant services are in the same building Sunday at 1030.

### Training Programs:

Air Force training programs available at Westover Air Force Base provide Reserve personnel with the knowledge and job proficiencies required in the performance of duty, contribution to the mission and opportunity for career progress.

Each Reserve member will be individually working and training with highly qualified personnel who will provide the professional skills essential to your specialty. One of the most important links in our training program is individual participation.

Training receives the highest priority at Westover; your progress will be monitored from your supervisor all the way up to the 439th Wing Commander.

On-the-job training, progressive Air Force schools, and correspondence courses are just a few of the development programs available through the Wing Training Office, BLDG 1850, EXT 3115.

In addition to its many other Reserve Training programs, Westover provides training for Mobilization Augmentees and Reserve Supplement Officers. An Officer-in-Charge has been established at the 439th Tactical Airlift Wing Headquarters to serve as a central point of contact and liaison for participants; establishment of this position does not preempt the responsibilities of assigned supervisors.

### Sponsor Program:

Upon reporting for duty, all personnel will be assigned to a sponsor. Unit sponsors will assist the new member to get established with least possible delay during in-processing, providing escort through required processing sections and introductions to co-workers.

### Recreational Services:

On-base recreational services are provided by the Recreation Branch of the Division of Morale, Welfare & Recreation. Facilities include a gymnasium/recreation center, three tennis courts, two softball fields (one lighted), a little league field, the base pool, theatre, the Four Seasons equipment rental store, and garden plots. There is a slight charge for some services.

### Staff Duty Officer:

A 439 TAW/SDO is on call during non-duty hours and may be contacted through the Base Telephone Operator.

Base Bulletin:

The Westover Base Bulletin is published each Wednesday. Deadline for receiving articles for publication is 0800 Tuesday. Submit items in writing to 439 CSG/DA or bring to BLDG 1408.

The Patriot:

The Patriot is an Official Class II U.S. Air Force newspaper published monthly for the personnel of the 439 Tactical Airlift Wing (AFRES). It is distributed once a month before each reserve training weekend. The Patriot office is located in the Information Office, BLDG 1100, Rm. 4, EXT 2072. P/A

RESERVE RETIREMENT

An unofficial survey of enlisted reservists with less than six years of service shows that few understand the value of their potential retirement benefits or how to compute them. Following is an explanation of the retirement point system and how a monthly retirement payment at age 60 is calculated.

Reservists with 20 years duty qualify for retirement benefits. Every Reservist accumulates "points" as he or she serves. Fifteen points are awarded annually simply for being enrolled in the Reserves. An additional point is given for each four-hour drill period attended. However, the maximum number of automatic and drill attendance points that can be applied to retirement pay for any year is 60. In addition, one point is also given for each day of "summer camp" attended during the year. Additional points can be accumulated for attendance at special courses, conferences and active duty assignments in addition to the normal two-week active duty tour. A reservist needs at least 50 points a year to have the year counted as "good." Twenty "good" years are required to qualify for retirement pay.

Retirement Pay Calculation for Category 'A' Reservists:

48 points (attendance at drills) + 15 points (automatic) = 63 points  
Only 60 points of the 63 may be counted toward retirement.  
60 points + 15 points (Annual ACDUTRA) = 75 points  
This is the minimum that a full-time Reservist should accumulate in one year.  
75 points/year x 19.5 years = 1462.5 points  
1462.5 points + 180 points (original 6-month ACDUTRA) = 1642.5  
This is the minimum expected total points at retirement.

$$\text{Retirement Pay} = \frac{\text{total retirement points} \times .025 \times \text{Base Pay}^*}{360}$$

Example:

$$\frac{1642.5 \times .025 \times \$836.70}{360} = \$95.44 \text{ per month}$$

\*Base Pay is the active duty monthly pay rate for highest grade and pay rate attained in the Reserves (quarters and mileage are not counted).

## MASSACHUSETTS

Massachusetts, known as "The Bay State", is the sixth smallest state in the nation; only New Jersey, Hawaii, Connecticut, Delaware and Rhode Island have smaller areas. The state covers an area of 8,257 square miles and has a population of over 5,725,000. The state flower is the Mayflower; the state tree is the elm; and the state bird is the chickadee. The many renowned universities and colleges make this state one of the world's great educational, research and cultural centers.

In 1620, the Pilgrims landed at Plymouth Rock in search of religious freedom. Ten years later the Puritans arrived, leaving England for the same reason. The first newspaper, printing press and library in the New World were established in Massachusetts. The first college in America, Harvard, was founded at Cambridge in 1636. The first public school in the United States, Boston English High School, opened in 1821. Many of the events leading up to the Revolutionary War took place in Massachusetts, including the Boston Massacre in 1770 and the Boston Tea Party in 1773. On April 19, 1775, the first battles of the Revolution were fought at Lexington and Concord. On February 6, 1788, Massachusetts became the sixth state to ratify the federal constitution.

Chief industries in Massachusetts include: clothing, electrical machinery and components, food and related products, industrial machinery and machine tools, leather goods, measuring instruments, metal products, paper and allied products, printing and publishing products, rubber and plastic products, textiles, and fishing.

A wealth of historic landmarks makes Massachusetts one of America's main tourist spots. Below is a listing of historic places to visit in the Bay State.

Boston, known as the "Cradle of Liberty", is one of the nation's great historic cities. Many of Boston's historic shrines can be seen while walking the "Freedom Trail".

Bunker Hill Monument, in the Charlestown section of Boston, honors one of the early battles of the American Revolution. A small museum has portraits, statues, and engravings of soldiers who fought in the Battle of Bunker Hill.

Cape Cod, a peninsula in southeastern Massachusetts, is a famous summer resort and vacation area.

The Constitution, known as Old Ironsides, is an early U.S. Navy frigate which is anchored at the Boston Naval Base in the Charlestown section of Boston.

Deerfield Village, in Deerfield, is the sight of Indian massacres in 1675 and 1704. The town has a museum and a gift shop, as well as many authentic colonial structures.

Harvard University, in Cambridge, is one of the world's most famous universities. Harvard, founded in 1636, is the oldest institute of higher learning in the United States.

John and Priscilla Alden House, in Duxbury, is probably the only house still standing that was occupied by Pilgrims who sailed on the Mayflower. It was built in 1653.

The Mohawk Trail, located along Rte. 2, has 50,000 acres of state parks and scenic splendor.

Old Sturbridge Village, in Sturbridge, is a replica of a typical New England town of about 1800. The village covers 200 acres.

Plymouth Plantation, in Plymouth, is a reconstruction of the first Pilgrim village. A replica of the original Mayflower is also maintained at the Plantation.

Saugus Ironworks, in Saugus, is a reconstruction of the first successful ironworks in America.

Witch House, in Salem, was the home of Judge Jonathean Corwin, who presided over witchcraft trials in the 1690's.

Massachusetts has 44 state parks, 97 state forests and 8 state recreational reservations. For information of the state parks of Massachusetts, write to Director, Division of Forests and Parks, 15 Ashburton Place, Boston, Mass. 02108.



## OUR NEIGHBORS IN WESTERN MASSACHUSETTS

Newcomers to Westover Air Force Base will find a wealth of activities and interesting places in the cities and towns of the surrounding community.

Springfield, called the "City of Homes", is the largest city in Western Massachusetts and the fourth largest city in New England. It covers an area of 32 square miles and has a population of over 163,000. Situated on the Connecticut River it was established in 1636 as a trading post by William Pynchon on Springfield, England.

Noted for its diversified industry Springfield has been an industrial area for more than 300 years. Well known products from the area include American Bosch fuel injection systems, Breck hair preparations, Buxton billfolds, Chapman Valves, Milton Bradley games and toys, Monsanto plastics, Moore handtools and Smith & Wesson small arms.

Springfield also claims an impressive list of "firsts". The first successful commercially sold automobile is the U.S. was constructed in Springfield in 1892. The first U.S. musket was made in the Springfield Armory in 1795. The Springfield (1903) and Garand (1937) rifles also originated here. The Seymour Planetarium, first projection planetarium constructed in the U.S., was devised and constructed here by Frank Korkosz. Friction matches were patented in Springfield by Alonzo D. Phillips. The first Junior Achievement program was started here in 1919 by Horace A. Moses. The game of basketball was invented here in 1891 by Dr. James Naismith.

Springfield has many interesting things to see and places to visit. The Science and Art Museums at the Quadrangle in downtown Springfield are open year-round. Nearby the Armory Museum has an impressive collection of historic firearms. The Naismith Memorial Basketball Hall of Fame, at Springfield College, is open seven days a week. The Civic Center in downtown Springfield houses art exhibitions, conventions, circuses, and concerts as well as professional and amateur games. It is also a meeting place for senior citizens groups and other social and civic clubs. Bay State West, also in the downtown area, has a large indoor shopping mall, business offices and hotel. The Eastfield Mall, located on Boston road, offers a large indoor shopping area with many well-known retail stores. Forest Park, off of Sumner Ave., has year-round recreational facilities on its 800 acre plot of land. Here can be found one of the finest public zoos in the country, woodland trails, picnic areas, bowling greens, baseball fields, tennis courts, skating and paddle ponds, two adult pools, greenhouse and rose gardens, duck ponds, a toboggan slide, a trailside museum and the Barney Amphitheater with musical entertainment during the summer months.

Chicopee, an Indian name meaning "violent waters," is known today as the "City of Elms." Bordering the Connecticut River and crossed by the Chicopee River, Chicopee covers an area of 25 square miles and has a population of over 66,000. One of the oldest townships in the country, it was first settled in 1641 as a northern precinct of Springfield.

Broad meadows in the area attracted settlers and the area remained a quiet farm community until the 1800's when waterpower was developed on the Chicopee River. Ironworks were the earliest industry followed by paper and cotton mills. In the 1820's the Ames Brothers Co. made tools, cutlery and swords for the government. Today prominent industries in Chicopee include: rubber goods, electrical machinery, transportation equipment, sporting equipment, plastics, textiles, metal-working and paper products.

Famous native sons include Lt. General Arthur MacArthur, father of General Douglas MacArthur, and 19th century writer Edward Bellamy famous for "Looking Backward", a Utopian novel of Boston in the year 2000.

Interesting places in Chicopee include the First Church, one of the oldest churches in New England, and City Hall in Chicopee Center, modeled after the Palazzo Vecchio, Florence, Italy. The Memorial State Park, off of Burnett Rd., has picnic areas, fireplaces, lake swimming, bathhouses, boating, fishing and ice skating. Szot Park, off of Front St., has picnic areas, baseball and football fields and Sunday evening band concerts during the summer months.

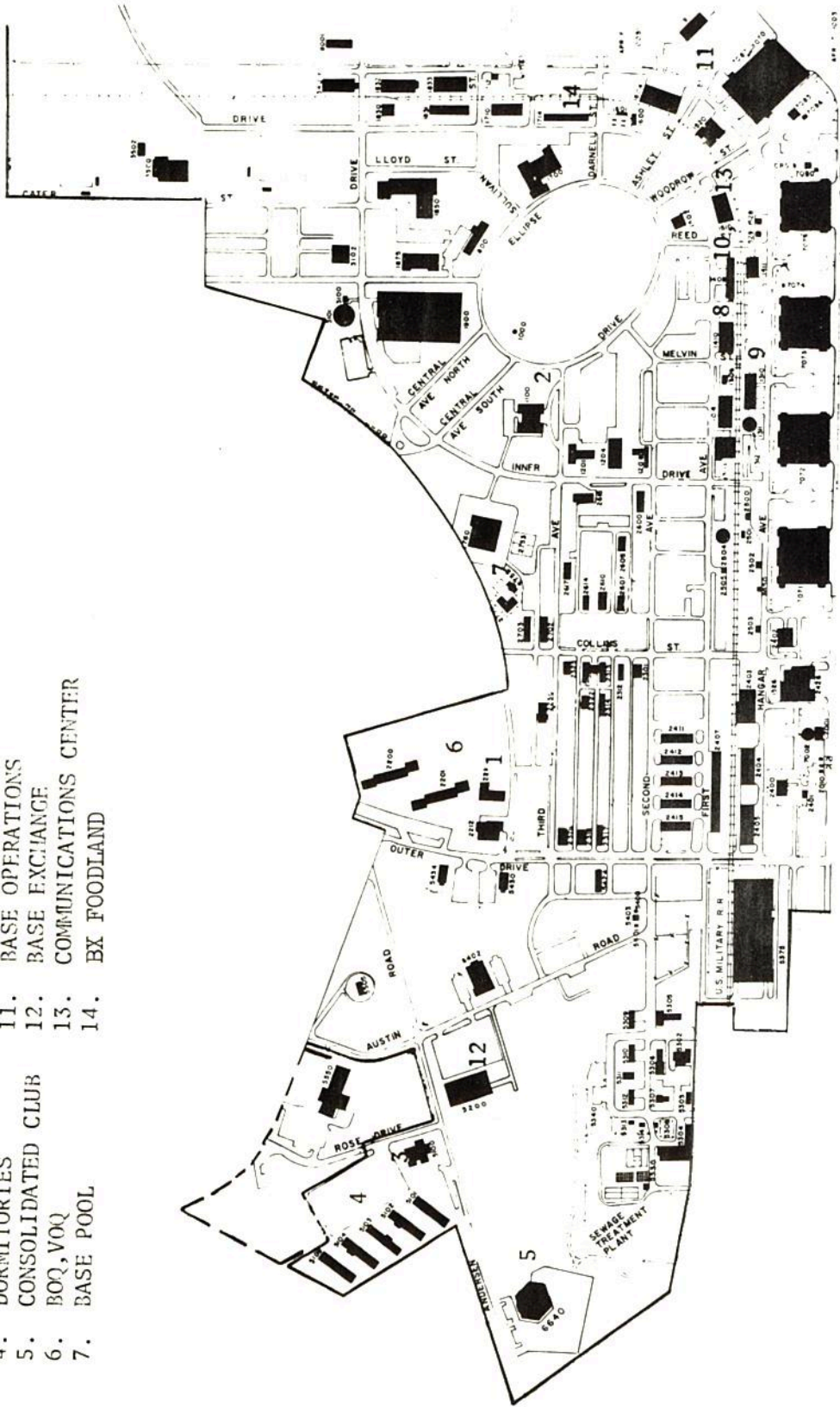
Holyoke, with a population of over 49,000, is located on the Connecticut River about four miles northwest of Westover. Holyoke was the first planned industrial city in the nation; the city was actually planned on paper before a building was erected. Organized as a town in 1850, it was named for Captain Elizur Holyoke.

Waterpower has been the impetus for industry, with a large dam across the Connecticut River between Holyoke and South Hadley. Once known as "The Paper City of the World", Holyoke's chief industries today include: paper products, textiles, chemicals, detergents, plastics, machinery, metals and printed material.

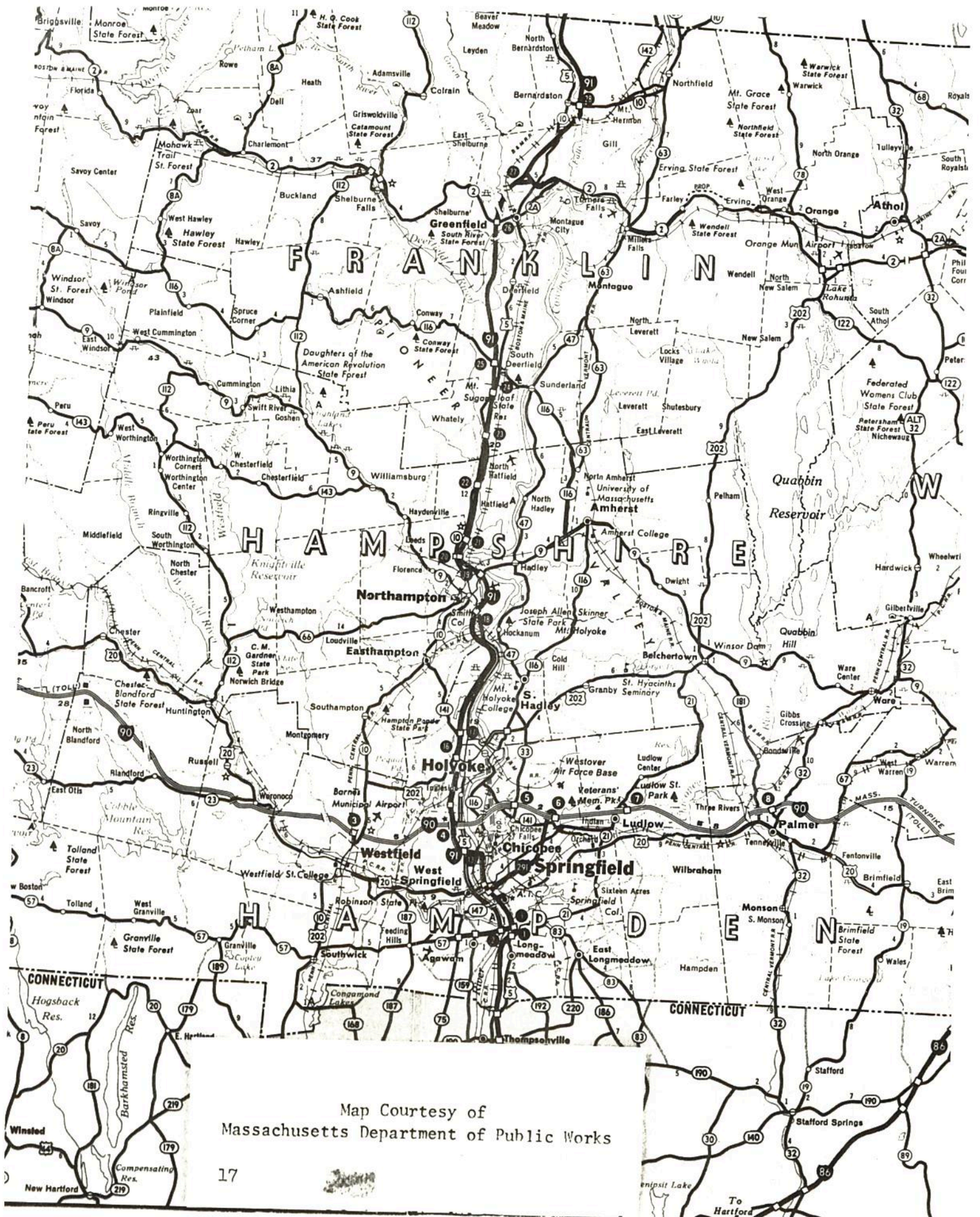
The Mt. Tom State Reservation, between Holyoke and Easthampton, is a recreation center with picnic areas, a trail museum, observation towers, tent sites, fishing and ice-skating on Lake Bray. South of the Reservation is the Mt. Tom Ski Area with a certified ski school, base lodge, complete ski shop, equipment rentals, slopes and trails and snowmaking equipment. The ski area also offers an Alpine Slide, operating from spring through fall. Off the road to the ski area is Mountain Park, an amusement center with midway attractions, live entertainment, sports field, pavilions and picnic areas. Holyoke also has a state ice skating rink.

MAP LISTING

- |                      |                           |
|----------------------|---------------------------|
| 1. BASE HEADQUARTERS | 8. CIVILIAN PERSONNEL     |
| 2. WING HEADQUARTERS | 9. CBPO                   |
| 3. DINING HALL       | 10. FINANCE               |
| 4. DORMITORIES       | 11. BASE OPERATIONS       |
| 5. CONSOLIDATED CLUB | 12. BASE EXCHANGE         |
| 6. BOQ, VOQ          | 13. COMMUNICATIONS CENTER |
| 7. BASE POOL         | 14. BX FOODLAND           |







Map Courtesy of  
Massachusetts Department of Public Works

BASE DIRECTORY

Telephone: (413) 557-XXXX

AUTOVON: 589-XXXX

	BLDG	EXTENSION
Aircraft CRASH Reporting	7091	2525
Ambulance Service		3000
Base Bulletin	1408	3056
Base Exchange	5200	2902
Barber Shop	5200	2996
Base Housing	4900	2805
Base Information	1100	2072
Base Locator (Active Duty)	1408	2891
(Reserve)	1850	3874
(Civilian)	1408	3193
Base Operations Dispatcher	7091	2917/2187
Base Photolab	1502	2919
Base Weather	7905	2935
Billeting	2200	2932/3032
Chaplain	H-3/7075	3031
BX Foodland	1714	3501
Consolidated Open Mess		593-5531/2/3
Disaster Preparedness	H-1/7087	2030/3179
Fire Chief	ND-38/7053	2591/2104
Information Operator	1800	1113
Judge Advocate	1850	3160
Medical Aid Station	5600	3012/3592
Mobility Control Center	H-9/7071	2146/3085/2583
Personal Affairs Section	1850	3874
Security Police (Emergencies)	1520	3000/2020
SP Investigations	1520	2882
Social Actions	H-5/7075	3546/3581
Westover Task Force		593-6421
Morale, Welfare & Recreation Div.	1850	3941
MWR (UTA)	1700	3081
Recreation Center (and Chief)	1700	2532
Base Gym	1700	3958
Base Pool	2752	2980
Theatre	1204	3152
Gas Station	1601	593-5102
<del>Aero Club</del>	H-3/7075	3888/593-3497

## 439th TACTICAL AIRLIFT WING DIRECTORY

OFFICE	OFFICE SYMBOL	BLDG	EXT
Wing Commander	439 TAW/CC	1100	3109/3156
Wing Vice Commander	439 TAW/CV	1100	3501
Executive Officer	439 TAW/CE	1100	3978
Asst. Dep. Comdr./Resources	439 TAW/RM	1100	2084/3810
Squadron Headquarters (UTA)	439 TAW/DT	1100	2894
Dep. Comdr./Operations	439 TAW/DO	1100	3504/3505
337th Tactical Airlift Sq.	337 TAS/CC	H-1/7087	2147/2148
337th TAS/OPS Officer	337 TAS/DO	H-1/7087	3812
731st Tactical Airlift Sq.	731 TAS/CC	H-1/7087	3006
731st TAS/OPS Officer	731 TAS/DO	H-1/7087	3006/3066/3105
Air Force Advisor	439 TAW/LNMA	1100	3502
Dep. Comdr./Maint. (UTA)	439 TAW/LG	H-7/7072	3816/3076
901st Consol. Acft. Mx. Sq.	901 CAMS/CC	H-7/7072	3174/3191
905th Consol. Acft. Mx. Sq.	905 CAMS/CC	H-7/7072	3076/2103
Logistics Plans Off.	439 TAW/LGX	1850	3810/2084/2062
Chief of Maintenance	439 TAW/LGM	H-7/7072	3076/3816
439th Tactical Hospital	439 TacHosp/CC	5600	3565
Safety Officer	439 TAW/SE	7091	3122
Information Officer	439 TAW/OI	1100	2072
Training	439 TAW/DPMT	1850	3115/2857
901st Aerial Port Flt.	901 APF/CC	ND-36/7055	2801/3054
905th Aerial Port Flt.	905 APF/CC	ND-36/7055	2955/2548
74th Aeromed. Evac. Sq.	74 AES/CC	1850	2861/2844
OIC, Det. MA/RSO Off. (UTA)	DET MA/RSO	1100	2021
Westover Command Post	439 TAW/DOOC	1100	2107/2041
Recruiting Office	439 TAW/RS	1800	2943/3923/2125

### Notes on locations:

Bldg 1100	Wing Headquarters
Bldg 1850	Base Headquarters
Bldg 5600	Tac Hospital/Medical Aid Station
Bldg 7091	Base Operations
Bldg 1800	Recruiting/Telephone Center
H-1/7	Hangars 1/7 (Hangar 1 is the Base Hangar)
ND-36	Nose Dock 36

439th COMBAT SUPPORT GROUP DIRECTORY

OFFICE	OFFICE SYMBOL	BLDG	EXT
Group/Base Commander	439 CSG/CC	1850	2802/3044
Executive Officer	439 CSG/CE	1850	3941/2802
Budget Officer	439 CSG/AC	1408	3103/3566
Administration	439 CSG/DA	1408	3056
Airfield Management Off.	439 CSG/OTM	7091	2524/2187
Security Police	439 CSG/SP	1520	2025/2531
Military Personnel/CBPO	439 CSG/DPM	1850	2993/3921
Civilian Personnel	439 CSG/DPC	1408	2871
901st Mobility Spt. Flt.	901 MOBSF/CC	5375	2115
905th Mobility Spt. Flt.	905 MOBSF/CC	5375	2040/2140
901st Civ. Eng. Flt. (FFTeam)	901 CEF/CC	5305	2900
905th Civ. Eng. Flt. (PBEEF)	905 CEF/CC	5305	3906/3184/2857
901st Wpn. Sys. Sec. Flt.	901 WSSF/CC	1520	3857/3804/3593
905th Wpn. Sys. Sec. Flt.	905 WSSF/CC	1520	2593
901st Communications Flt.	901 CF/CC	2426	2001/3018/3050
905th Communications Flt.	905 CF/CC	2426	3969/3915
Base Information Off.	439 CSG/OI	1100	2072
Chaplain	439 CSG/HC	H-3/7075	3031
Ground Safety	439 CSG/SEG	7091	3574
Transportation Officer	439 CSG/LGT	H-5/7073	2121
Taxi Dispatch	439 CSG/LGTV	H-5/7073	3855/3055
Commercial Transportation	439 CSG/LGTT	5375	3009
Procurement	439 CSG/LGP	5375	3158
Medical Aid Station	439 CSG/SG	5600	3592/3012
Civil Engineering	439 CSG/DE	5302	3813
Base Supply Officer	439 CSG/LGS	5375	2085/3908
Legal Officer (UTA)	439 CSG/JA	1850	3160
Disaster Preparedness	439 CSG/DW	H-1/7087	2030/3179

Notes on locations:

Bldg 1850	Base/Group Headquarters
Bldg 1408	Base Administration Bldg
Bldg 7091	Base Operations Bldg
Bldg 1520	Security Police/Four Seasons Rental Bldg
Bldg 5375	Base Supply bldg
Bldg 5305/2	Located at the Civil Engineering Complex
Bldg 2426	Avionics bldg
Bldg 1100	Wing Headquarters bldg
H-1/3/5	Hangars 1/3/5 (Hangar 1 is the Base Hangar)
Bldg 5600	Tac Hospital/Medical Aid Station





