

Low Profile

Made in USA - Patented

NO-PEST vent™

Benefits that others cannot provide

Closed position (not in operation)

- Birds and other pests cannot enter the "Exclusive Dual Door" design.
- Reduces energy robbing drafts from entering the residence through the vent.
- Clean look, fully closed design, no place for bees or wasps to nest.

Open position (in operation)

- Most efficient air flow vent in the industry for reduced clothes drying time.
- No screen or guard to collect lint, plug-up and reduce air flow efficiency.
- Reduces dryer fire hazard caused by lint buildup.

Maintenance - Annual duct cleaning recommended

- Ducts can be cleaned with lint brush from either side.
- Makes multi-story installation cleaning possible from the inside without using ladders.
- Tough U/V resistant plastic resists sunlight and cracking.

Compare the No Pest Vent to our competition

- Vents with one-piece flap or 2 to 4 louvers.
 - * Opening with their beaks, birds quickly build a nest for a well heated home.
 - * Lint buildup causes unreliable louver closure allowing drafts and easier entry for birds.
- Vents with screen, floating shuttle, or add-on guards for existing vents.
 - * Require weekly or monthly cleaning of lint buildup.
 - * Lint buildup restricts flow which reduces dryer efficiency and creates a fire hazard.

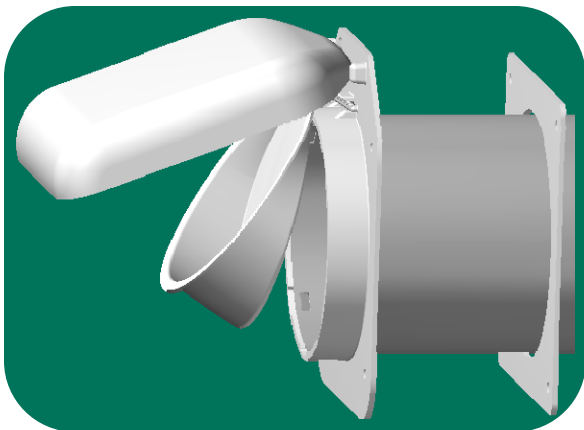
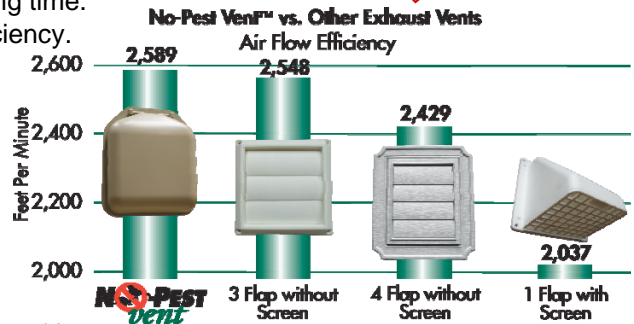
Features

- Includes 4 inch diameter 12 inch long duct pipe.
- Used for clothes dryer, bathroom and stove/range hood exhaust vents.

Installation

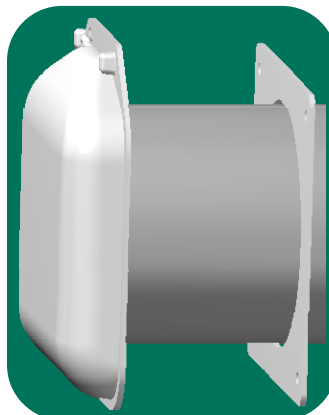
- ◆ Assemble tube and attach to faceplate with seam oriented up (see Figure 1).
- ◆ Insert tube thru hole in building.
- ◆ Fasten faceplate to building with screws using concealed mounting pattern (see Figure 1).

Most Efficient
Maintenance Free
Vents on the Market



Attention! Face plate must be installed flush so that doors close completely when not in use. Uneven installation will create a poor seal for doors.

Attention! Insert pipe with seam at top to avoid interference with inner door.



Note! Use #8 stainless steel screw in concealed under hood locations. Do not over tighten

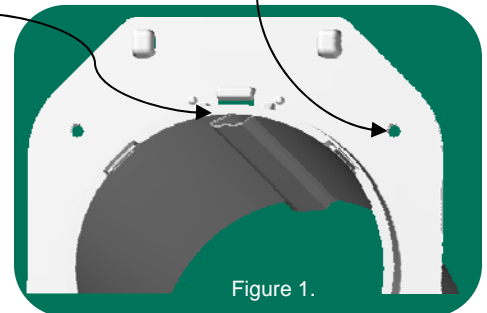


Figure 1.

P-tec Products, inc.

P 616-772-0659

F 616-772-1480

info@p-tecproducts.com

www.p-tecproducts.com

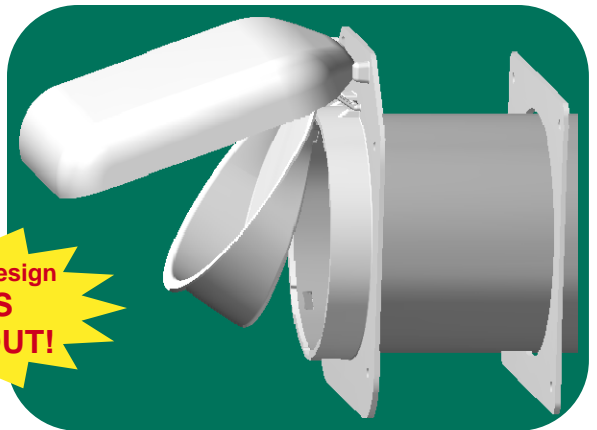
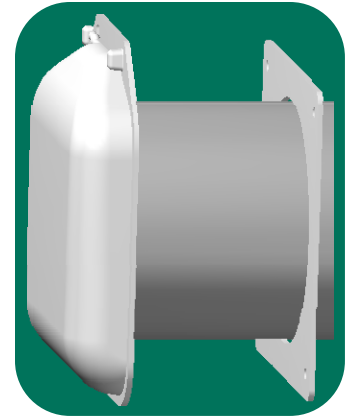
Low Profile

Made in USA - Patented

NO-PEST vent™

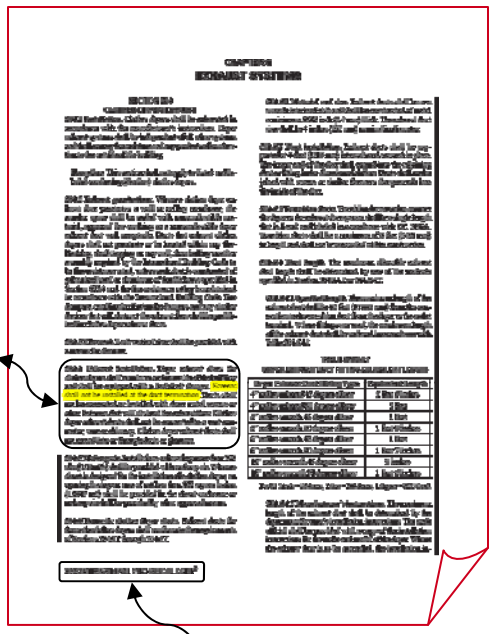
Available in three colors

White Tan Brown



**Dual door design
KEEPS
PESTS OUT!**

504.4 Exhaust installation. Dryer exhaust ducts for clothes dryers shall terminate on the outside of the building and shall be equipped with a backdraft damper. **Screens shall not be installed at the duct termination.** Ducts shall not be connected or installed with sheet metal screws or other fasteners that will obstruct the exhaust flow. Clothes dryer exhaust ducts shall not be connected to a vent connector, vent or chimney. Clothes dryer exhaust ducts shall not extend into or through ducts or plenums.



2009 INTERNATIONAL MECHANICAL CODE®

P-tec Products, inc.
P 616-772-0659
F 616-772-1480
info@p-tecproducts.com
www.p-tecproducts.com