

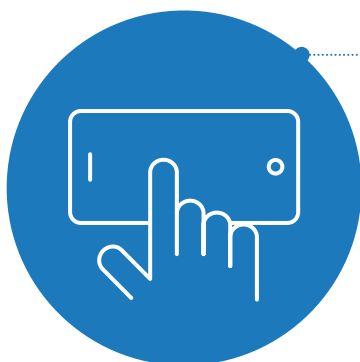


Conventional communication assistive technology

6,899

patent families for conventional communication technology filed across **43 patent offices**

What technologies are involved?



Special software and services
4,064 (59%)



Visual communication
1,745 (25%)



Audio communication: speech input
751 (11%)



Switches and input devices
535 (8%)



Audio communication: text-to-speech (TTS)
506 (7%)



Electronic consumer goods companies, rather than companies specializing in assistive technology, feature as top patent applicants. Chinese and Korean corporate applicants emerged after 2013.

Which are the fastest growing technologies?

Filings in **emulation software** (accounting for over half of **special software and services**) increased almost fourfold between 2011 and 2016

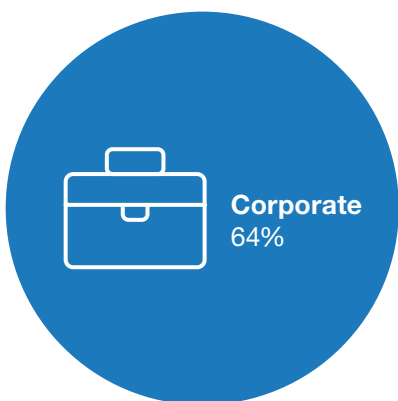
Speech input-related filings have marked an average annual growth rate of 39% from 2013 to 2017

Who is filing?

Applicant sector



Individuals
25%



Corporate
64%



Academia
10%

Top patent applicants

IBM (U.S.)	149
Panasonic (Japan)	115
Samsung (Republic of Korea)	113
NEC (Japan)	82
Microsoft (U.S.)	77