



# Akashi Tourist Guidebook

# Explore Akashi



Food, Straits, History, and Time, Highlights of Akashi's Attractions

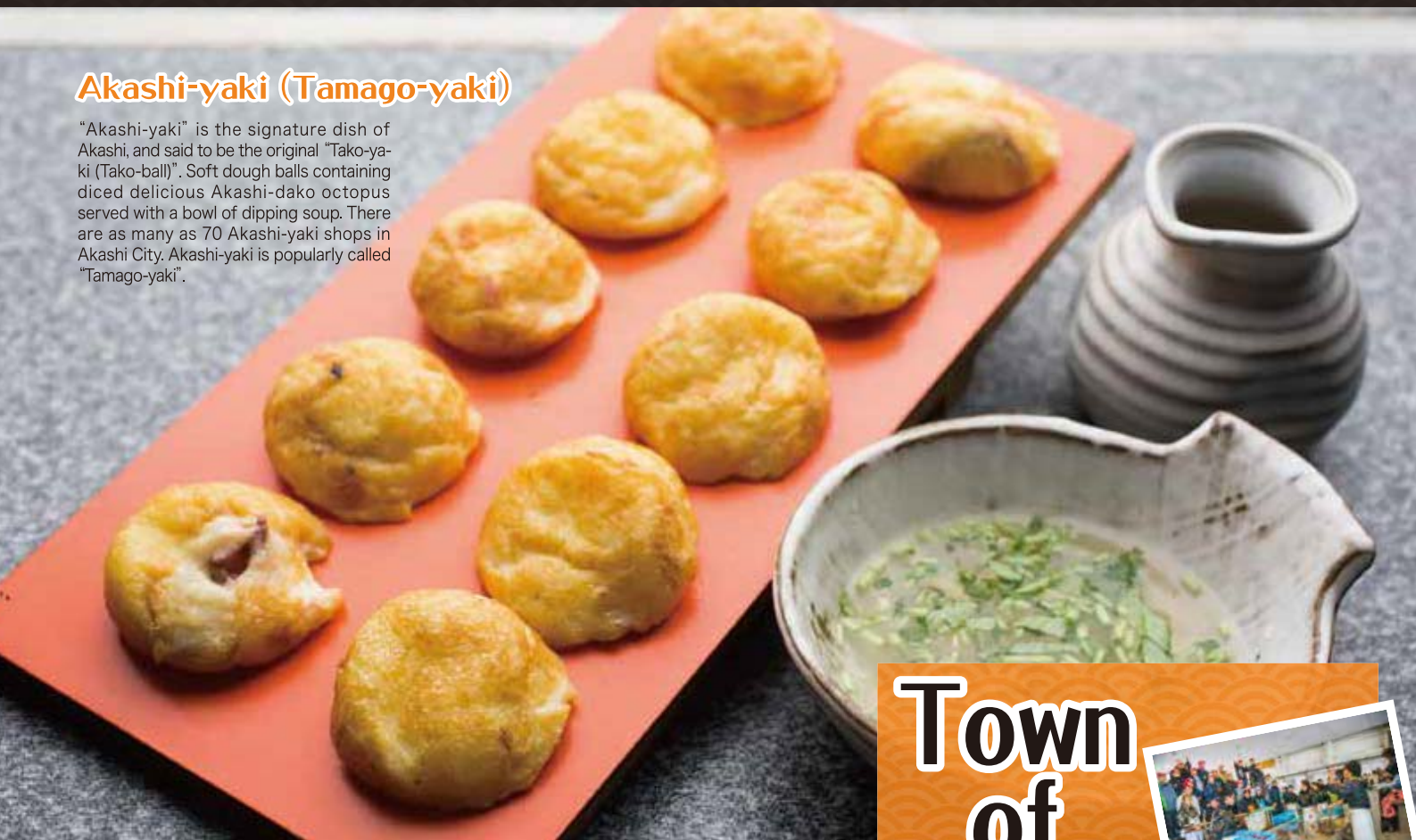


# Enjoy Strolling around Akashi, “The Town of Time”

There are many sightseeing spots in Akashi within walking distance. The keywords to enjoy the most of Akashi area are “FOOD, The STRAIT, HISTORY, and TIME.”

## Akashi-yaki (Tamago-yaki)

“Akashi-yaki” is the signature dish of Akashi, and said to be the original “Tako-yaki (Tako-ball)”. Soft dough balls containing diced delicious Akashi-dako octopus served with a bowl of dipping soup. There are as many as 70 Akashi-yaki shops in Akashi City. Akashi-yaki is popularly called “Tamago-yaki”.



Akashi-yaki is served on a tilted wooden plate. The key ingredient for its soft texture is low gluten wheat starch.



## Uo-no-tana Street Market

This street market has a rich 400-year old history being the pantry for Akashi. Approximately 100 shops sell seafood such as boiled fish pastes, souvenirs, as well as seafood. The famous “Akashi-dai (Akashi sea bream)” and “Akashi-dako (Akashi octopus)” can be purchased from the day-time fish auction. It is known locally as “Uontana”.



## Yaki-anago (Grilled Sea Eel)

Plump and delicious sea eel caught in the Akashi-kaikyo strait is one of three specialties of Akashi, along with sea bream and octopus. Grilled sea eel with salty-sweet sauce is especially famous and known as “Yaki-anago (grilled sea eel)”. Variations of sauces and cooking methods are characterized by each shop. You can enjoy the delicate differences in taste. “Yaki-anago” is a very popular souvenir of Akashi.



## Akashi-dako (Akashi Octopus)

Octopus caught in the Akashi-kaikyo strait is called “Akashi-dako (Akashi octopus)” and is famous nationwide. The fast moving currents at Akashi-kaikyo strait make short and stout tentacles that taste delicious. Please enjoy the taste of “Akashi-dako” as “Sashimi (raw slices)” and “Tempura (deep fried fritter)” as well as other specialties of “Akashi-dako” such as dried octopus, octopus rice, and octopus crackers.

# Town of Food



## The Secrets of Akashi Sea Food

Akashi City faces the Seto-nai-kai inland sea, and is full of nature. Especially, Akashi-kaikyo strait is an excellent fishing ground because of its nutrient-rich sea water. Great tasting fish that has firm flesh matures in the fast moving currents of the Akashi-kaikyo strait. The day-time fish auction system called “Hiruami” enables fish shops and restaurants to purchase the freshest fish caught in the morning, ready for the midday’s trade. Please enjoy the food culture in Akashi that is provided by nature and its people.

## Akashi-dai (Akashi Sea Bream)

Maturing in the fast moving currents and nutrient-rich sea water of the Akashi-kaikyo strait, the firm fleshed “Akashi-dai (Akashi sea bream)” has been ranked as a first-class sea bream in Japan. Origins of whole char-grilled Akashi-dai called “Sugata-yaki” said to be the tribute to the Shogun during the Edo period. Today, “Sugata-yaki” is still the chosen gift for a happy event.



# Akashi-kaikyo Bridge

The bridge spanning the Akashi-kaikyo strait is the world's longest suspension bridge and has a total length of 3,911 meters. The main towers have an impressive height of 300 meters from the sea level. It is a must see lit up at night. The view from the city side provides a panoramic scene of the strait, the sky, and the bridge.



# Town of Straits

## Refresh Your Mind and Body with the Sea Breeze

Akashi City is long and narrow, spanning from east to west. It has 15.6 km of coastline. There are some well-maintained parks along the coast where visitors can enjoy the strait's view with the magnificent Akashi-kaikyo bridge. Visitors can enjoy swimming, fishing, and BBQ. Visitors can also go on a cruise throughout the year. Please enjoy and have fun in the "Town of Straits"

## Okura-kaigan Seaside Park and Okura-kaigan Beach

Okura-kaigan seaside park is a large, open park that faces the Akashi-kaikyo bridge and Awaji-shima island. Visitors can enjoy not only walking but also variety of activities. BBQ facilities and grounds for futsal and golf are available for use. Okura-kaigan beach is opening in the summer, a well-known bathing spot.



## Akashi Port and Old Lighthouse

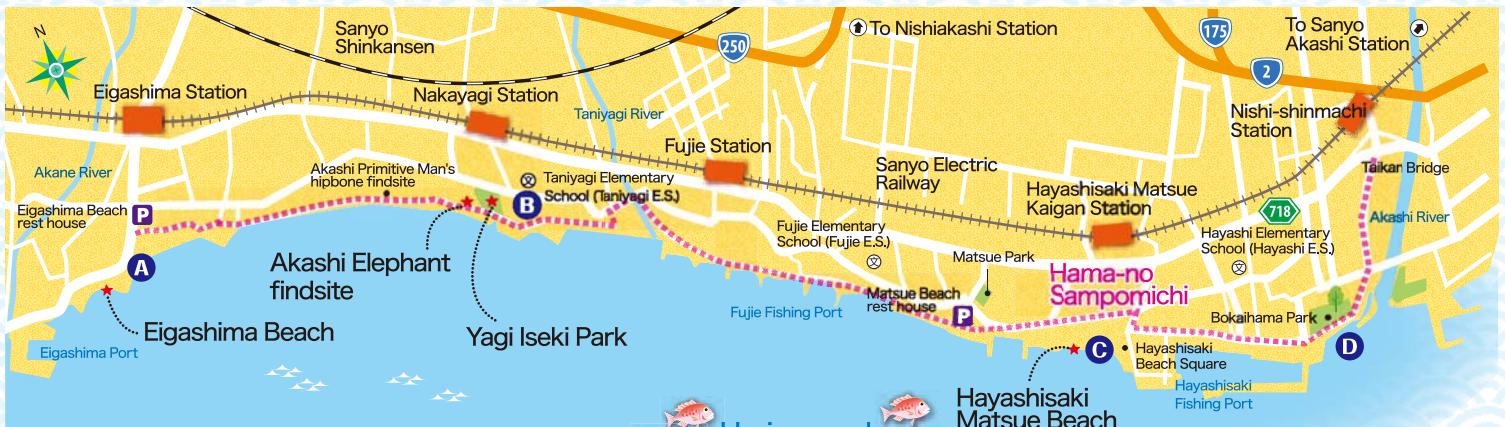
This light house's official name is "Kyu Hakozaki Torodo (old Hakozaki stone lantern house)". It was built in 1657, and is the oldest stone lighthouse in Japan. This is a precious historical heritage site which is loved by citizens, and is used as a filming location for a TV drama.



## Jenova Line Mini-cruise



The Awaji Jenova Line is the high-speed craft between Akashi and Awaji-shima island. The 40 minutes round trip from Akashi Port to Iwaya Port in Awaji-shima island is a great way to enjoy a mini cruise of the area.



## Hama-no Sampomichi Photo Shooting Spot

### A Sunset Mirage (Daruma sunset)

A beautiful sunset can be enjoyed anywhere in Akashi. For the best "Sunset mirage" photos, it is recommended to photograph the sunset at Eigashima Beach in the western part of Akashi. You can see the big round sunset mirage from October through to March in the right conditions.



### B Mural Paintings

Along the coastal path of "Hama-no Sampomichi", a mural is painted of the legends of Akashi and its history.

### C Marine Activities

Many people enjoy marine sports at Hayashisaki Matsue Beach. People enjoy activities such as paddle boarding as show in this picture.

### D Akashi-kaikyo Bridge

The coastal path of "Hama-no Sampomichi" is an ideal location from which to photograph the entire Akashi-kaikyo bridge.

## Hama-no Sampomichi (Coastal path)

With a 7km sidewalk, "Hama-no Sampomichi" extends along the shore from the west side of the Akashi-gawa river to Eigashima Beach. We can visit the fishing ports and sightseeing spots of the Akashi-kaikyo strait and Awaji-shima island. It is ideal for jogging and cycling because large vehicles are not allowed to access. With the fresh sea breeze throughout the seasons, please enjoy the atmosphere of the "Town of Strait".



## Harima Cycling Road

This is a 35km cycle-path connecting Akashi and Himeji. This cycle-path includes the "Hama-no Sampomichi" and with its smooth and flat route, it's a nice way to enjoy a day's cycling.

# Town of History



## Akashi Castle/ Akashi Park

The castle is one of 100 major castles in Japan with 400-year-old history, which was built by Ogasawara Tadazane. The castle turrets, "Tatsumi yagura (turret)" and "Hitsujisarū yagura", have been classified as an "Important cultural properties". Either of which is open to the public on Saturdays, Sundays, and national holidays alternating every other month in spring and autumn. A georama of the old Akashi, as depicted in the middle Edo period, is on exhibition in the yagura. Akashi Park, which includes the castle and the garden, is selected as one of the Japan's top 100 urban parks. Visitors can enjoy and relax in the spacious grounds.

## Lords of the Province

Akashi Castle is also known as Kishun-jo, which was named by the sixth lord Matsudaira Nobuyuki, who is said to have constructed the mile stones and the canal in the castle town as well as the windbreak forest along the coast.

## Akashi Town, Cherished by Historical Figures

Akashi is the castle town that grew around Akashi Castle. It is said that a well-known samurai, Miyamoto Musashi, plotted out the town. Akashi has a number of historical sites and historic figures, including inscriptions of poetry by a master poet, Kakinomoto Hitomaro, on stone monuments, and landscapes described in The Tale of Genji written by Murasaki Shikibu. It's easy to develop a keen interest and ponder the past years while strolling around the town.

## Nakasaki Auditorium (Nakasaki Kokaido)

Nakasaki-kokaido (public hall) is a multi-purpose hall that was constructed in 1911. Natsume Soseki gave a lecture there when it was first opened. It was constructed in accordance with the architectural styles of the Nara and Kamakura eras and utilizes a wooden truss structure. The hall is classified as a "Registered tangible cultural property".



## Ruins of Funage Castle/ Funage-nishi Park

Funage Castle together with the castle town was built in 1585 by Takayama Ukon. The sitemap in the park provides a description of Takayama himself and a map comparing the past and present area. It shows what Funage Town would have looked like.

## Zenrakuji Temple (Kaikoin Temple, Enjuin Temple)

Zenrakuji temple is generally referred to as Kaikoin/Enjuin, and is one of the historically significant temples in the city. It was first founded by Hodo Sennin in 645, and contains a memorial tower of Tairano Kiyomori in Kaikoin. The dry landscape garden in Enjuin is said to have been designed by Miyamoto Musashi himself.



## Akashi City Museum of Culture (Bunka Hakubutsu-kan)

The museum provides information of Akashi's history and culture. The permanent exhibitions are divided into eight themes, e.g. Akashi Elephant's skeleton model as well as historical materials concerning Akashi Primitive Man, Akashi Castle, Akashi's fishing industry. Seasonal exhibitions are also held.

## Let's Try New Experiences

Experience dressing up in "Junihitoe (court lady's clothing)" or Japanese armor and helmet, free of charge, admission fee required. The service is available three times a month. Reservations are necessary.



## Locations Related to The Tale of Genji

The Tale of Genji is the world's oldest love saga, written by Murasaki Shikibu. One volume called "Akashi no Maki (Chapter of Akashi)" is related on a stage of Akashi. Some of the shrines, temples, and historic sites that appear in the story still remain in here today. Fill your thoughts with the love story driven by Hikaru Genji, and then visit the actual locations.



## Muryokoji Temple and Tsuta-no Hosomichi (Path of Ivy)

Muryokoji temple is said to have been the mansion described in the story where Hikaru Genji enjoys viewing the moon. Let you imagine the path that Hikaru Genji walked to the Okabe Mansion where lady Akashi lives.

# Town of Time

## Akashi Municipal Planetarium (Ten-mon Kagaku-kan)

The Akashi Municipal Planetarium is located on the meridian (135° east longitude). It's a science museum where you can learn about time and space. The building is classified as a "Registered tangible cultural property". The clock tower shows Japan standard time and it's a symbol of Akashi City. The planetarium in the museum is the oldest one still in use.



## Plenty of Sites Related to Time

The Japan standard time meridian (135° east longitude) passes through Akashi City. For this reason, we call Akashi the "Town of Time". You can learn about time at the Akashi Municipal Planetarium (Ten-mon kagaku-kan), which is a symbol of Akashi located on the meridian line. In the city, there are many meridian markers and sundials. While walking around "Toki-no Michi" (the road of time) and the city, you'll find many spots which make you feel the romance of time.

Called as "Toki no Michi" (about 2 km)

## Town of Time Hiking Route

### 1 Akashi Park

### 2 Akashi City Museum of Culture (Bunka Hakubutsu-kan)

### 3 Uenomaru-kyokai Church

Kawabe Teikichi and S.E.Cooper, a missionary, started their missionary work in 1907. There is a sundial mounted on the front wall of the church.

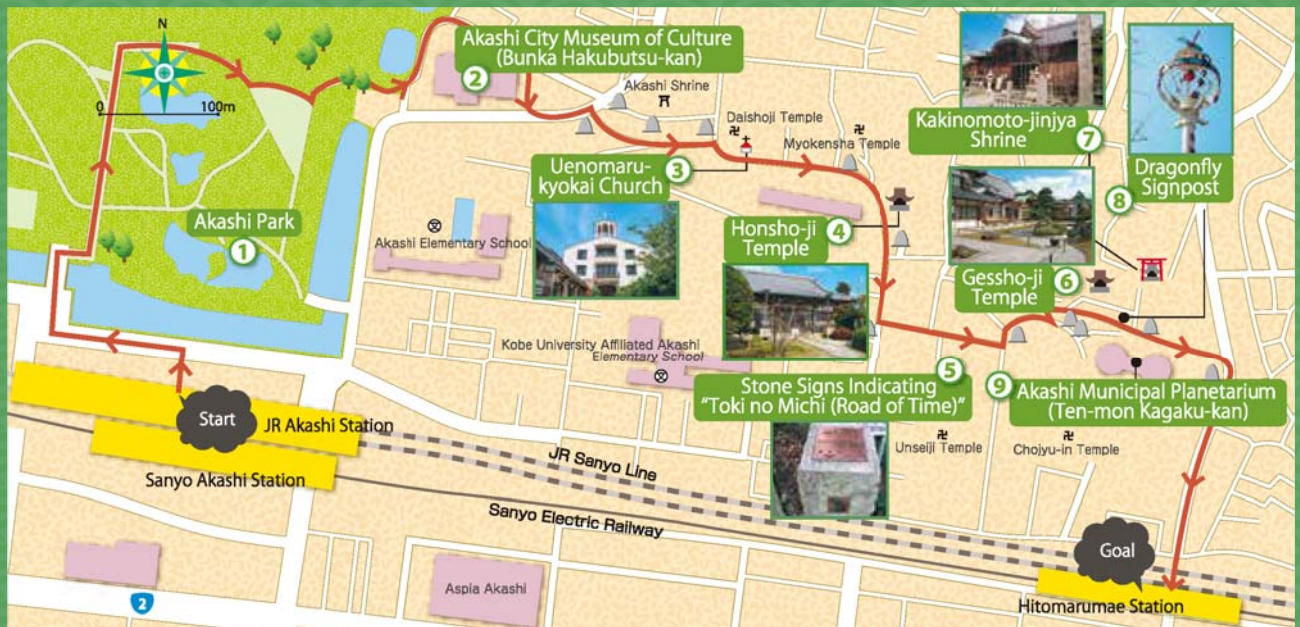
### 4 Honshoji Temple

It's said that Honshoji temple was originally built in Funage more than 400 years ago and then moved here. There is a Japanese dry landscape garden designed by Miyamoto Musashi.

### 5 Stone Signs Indicating "Toki-no Michi (Road of Time)"

There are 12 stone marks engraved with the Zodiac signs along "Toki-no Michi". You can find them while walking around "Toki-no Michi"

▲ = 5 Stone Signs Indicating "Toki-no Michi(Road of Time)"



### 6 Gesshoji Temple

The temple gate was built originally as a Yakui-mon gate for Fushimi-jo castle in Kyoto by Toyotomi Hideyoshi. Later, it was moved to Akashi Castle and named Kite-mon gate. In the early Meiji period, when the castle was demolished, the gate's use was done and it was moved again to here. Sitting and retired emperors at the time offered "tanka (poems)" on "tanzaku (paper strip)" and some of them are designated as cultural properties of Japan and Akashi City.

### 7 Kakinomoto-jinjya Shrine

Kakinomoto-jinjya shrine is dedicated to Kakinomoto Hitomaro who was a master poet. Locals affectionately call the shrine "Hitomaru san". Prayers seeking protection from fire, success and inspiration in studies and literature, as well as safe childbirth, and finding a good partner, are hoped to be answered here. In the garden surrounding the shrine, there is a biography of Hitomaro and many monuments inscribed with Hitomaro's tankas (poems).

### 8 Dragonfly Signpost

This is a signpost that marks Japan standard time meridian (135° east longitude). On top, it has a dragonfly that used to be called "Akitsu", which originated from an ancient word referring to Japan "Akitsushima". It's well-known that the signpost inspired the sci-fi comic writer Matsumoto Reiji to have an interest in space when he saw it as a child.

### 9 Akashi Municipal Planetarium (Ten-mon Kagaku-kan)



**Akashi City MAP & Access**

**The Time of Town, Akashi**



**East longitude 135°  
Japan Standard Time  
Meridian**



**Access from Other Regions of Japan**

By public transportation • The time required is just guidance.

