



# **FALKEN** TIRES

2017 DATA BOOK





## THE FALKEN STORY

Falken Tires, the Official Tire of Major League Baseball, continues to aggressively build a reputation as a leader in high performance tire technology for cars, trucks and SUVs. Falken Tires has successfully grown to become a flagship brand and a leading consumer choice for ultra high performance tires, as well as economical and value-priced lines in Light Truck, Commercial Medium Truck and Bus Radial tires. With its North American headquarters in Rancho Cucamonga, California, Falken has established five strategically located tire distribution centers across the United States—in California, Florida, Illinois, New Jersey and Texas—in order to quickly and efficiently supply its retailers throughout North America.

## CONTINUING OUR MOTORSPORTS EXCELLENCE

Falken Tires strengthens its retailer and customer relationships by marketing its tires through multiple professional motorsports programs—drifting and off-road—as well as grassroots series and driving challenges that highlight the capabilities of the brand’s street tires. These racing and driving programs are used as technological platforms that feature Falken’s strengths in addition to aiding Falken’s engineers to improve its products. Falken’s allegiance to Formula Drift has resulted in multiple series championships, while its six-year participation in the Tudor United SportsCar (formerly American Le Mans) series, running a single-car team, earned multiple wins in the extremely competitive GT class, including back-to-back victories at the season-ending 10-hour endurance race, Petit Le Mans. And, in just a few short years of competing in the demanding, deep-rooted world of off-road racing, Falken Tires has scored excellent results with its WILDPEAK line of tires in numerous series throughout North America.



## CONTENTS

WILDPEAK A/T3W	1–4
WILDPEAK M/T	5–8
WILDPEAK H/T	9–12
ZIEX S/TZ05	13–16
AZENIS FK510	17–20
AZENIS RT615K+	21–24
AZENIS FK450 A/S	25–28
ZIEX ZE950 A/S	29–32
SINCERA SN250 A/S	33–36
ESPIA EPZ II	37–40
ESPIA EPZ II SUV	41–44
EUROWINTER HS449	45–48
ORIGINAL EQUIPMENT	49
WARRANTY INFORMATION	50–52
LOAD AND INFLATION CHARTS	53–54
SPEED SYMBOL CHART	55
QUICK REFERENCE GUIDE	56–58

### INSIDE SALES HOURS

Monday—Friday  
5:00AM—5:00PM PST

8656 Haven Ave.  
Rancho Cucamonga, CA 91730  
800.723.2553

**FALKEN**  
TIRES



# WILDPEAK A/T3W

ALL-TERRAIN, ANY-WEATHER RUGGED CAPABILITY

The **WILDPEAK A/T3W** is engineered for adventure, any time and in any weather. The A/T3W combines aggressive off-road ability and rugged terrain driving without compromise on the pavement. An optimized tread design combined with a silica tread compound enable the A/T3W to excel in three areas: wear, winter and wet performance. Designed for severe snow conditions, every A/T3W tire is qualified by the Rubber Manufacturers Association for the Three Peak Mountain Snow Flake (3PMSF) symbol. The A/T3W is packed with technology, from Falken's patented 3D Canyon Sipes to an all-new proprietary lower sidewall. Full-depth sipes and grooves maintain consistent performance and appearance throughout the life of the tire.

**AVAILABLE TIRE SIZES**  
54 SIZES

**AVAILABLE RIM SIZING**  
15" – 20"

**SPEED RATING**  
R • S • T

**LIMITED TREAD LIFE WARRANTY**  
55,000 MILES / 89,000 km

**RATING**  
SEVERE SNOW CONDITIONS

**RIDE GUARANTEE**  
30 DAYS

## PERFORMANCE RATINGS†



### OUTER APEX SIDEWALL

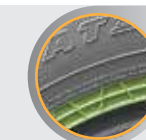
features a secondary bead apex that acts as a heat shield to protect the internal casing of the tire, resulting in confident handling and durability with the added benefit of sidewall protection on rough roads and trails.



### POPULAR FITMENTS:

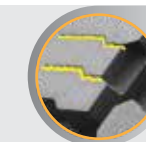
- CHEVROLET COLORADO
- CHEVROLET SILVERADO
- FORD F-SERIES
- JEEP CHEROKEE
- NISSAN FRONTIER
- NISSAN TITAN
- RAM TRUCKS
- TOYOTA 4RUNNER
- TOYOTA TACOMA
- TOYOTA TUNDRA

## TIRE HIGHLIGHTS



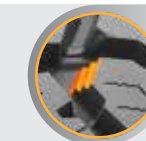
### HEAT DIFFUSER TECHNOLOGY

in the lower sidewall dissipates heat to protect the internal tire components. Keeping this critical area of the tire cool ensures vehicle stability even when towing or carrying heavy loads.



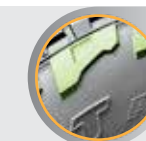
### 3D CANYON SIPE TECHNOLOGY

interlocks the shoulders to resist wear from high torque as well as providing additional handling stability.



### RUGGED AND RIGID TREAD BLOCKS

feature support ramps and step-down features that provide tread-pattern rigidity in the contact patch, enhancing vehicle stability and handling while also preventing stones from becoming trapped in the grooves.



### AGGRESSIVE UPPER SIDEWALL

along with offset shoulder blocks protect the tire from sharp rocks and provide additional off-road traction at low tire pressures or in off-camber situations.

## SIZES AND SPECIFICATIONS

NEXT PAGE

\*This tire is designed for severe snow conditions and meets the RMA (Rubber Manufacturers Association) snow traction performance requirements.  
†Performance ratings are based on a scale of 1 to 5 with 5 being best. Ratings are in comparison to other Falken Tires products in the same category.

Product images are for illustration purposes only. Tread design, technical information and tire construction subject to change without notice and may vary by size.

# WILDPEAK A/T3W

ALL-TERRAIN, ANY-WEATHER RUGGED CAPABILITY

## LIMITED TREAD LIFE WARRANTY: 55,000 MILES / 89,000 km

Wheel Dia.	Size	Load Range	Extra Load	Load Index/Speed Rating	Item Number	Measuring Rim Width (in)	Approved Rim Width Range (in)	Overall Diameter (in)	Section Width (in)	Revolutions Per Mile	Tread Width (in)	Tread Depth (mm)	Tread Depth (/32")	Tire Weight (lbs.)	Max PSI (Cold)	Max Load (lbs.)	UTQG
15"	235/75R15	-	XL	109T	28034108	6.5	6.0 - 8.0	28.9	9.1	732	7.2	10.9	14	35	50	2271	660-A-B
	30x9.50R15LT	C/6	SL	104S	28030112	7.5	6.5 - 8.5	29.5	9.5	708	7.3	13.6	17	44	50	1985	-
	31x10.50R15LT	C/6	SL	109S	28030114	8.5	7.0 - 9.0	30.5	10.4	685	8.2	14.1	18	50	50	2270	-
	32x11.50R15LT	C/6	SL	113R	28037115	9.0	8.0 - 10.0	31.5	11.3	664	9.0	15.1	19	56	50	2535	-
	33x12.50R15LT	C/6	SL	108R	28037116	10.0	8.5 - 11.0	32.5	12.5	645	9.6	15.6	20	57	35	2205	-
	35x12.50R15LT	C/6	SL	113R	28037117	10.0	8.5 - 11.0	34.5	12.5	608	9.4	15.6	20	70	35	2535	-
16"	235/70R16	-	XL	109T	28034109	7.0	6.0 - 8.0	29.0	9.4	729	7.5	10.3	13	37	50	2271	660-A-B
	P245/75R16	-	XL	112T	28034608	7.0	6.5 - 8.0	30.5	9.8	694	7.5	10.3	13	39	50	2469	660-A-B
	255/70R16	-	XL	115T	28034657	7.5	6.5 - 8.5	30.1	10.2	703	8.3	10.3	13	40	50	2679	660-A-B
	265/70R16	-	SL	112T	28034667	8.0	7.0 - 9.0	30.6	10.8	692	8.7	10.8	14	42	44	2469	660-A-B
	265/75R16	-	SL	116T	28034301	7.5	7.0 - 9.0	31.7	10.6	671	8.1	10.8	14	44	44	2756	660-A-B
	LT225/75R16	E/10	SL	115/112S	28030119	6.0	6.0 - 7.0	29.3	8.5	711	6.9	13.1	17	41	80	2680	-
	LT235/85R16	E/10	SL	120/116S	28030994	6.5	6.0 - 7.5	31.7	9.1	658	7.0	13.6	17	48	80	3085	-
	LT245/75R16	E/10	SL	120/116S	28030628	7.0	6.5 - 8.0	30.5	9.5	684	7.5	13.6	17	49	80	3085	-
	LT265/75R16	E/10	SL	123/120S	28030639	7.5	7.0 - 8	31.7	10.4	660	8.1	14.1	18	55	80	3415	-
	LT285/75R16	E/10	SL	126/123R	28037611	8.0	7.5 - 9.0	32.8	11.1	637	8.8	14.6	18	61	80	3750	-
	LT305/70R16	E/10	SL	124/121R	28037641	9.0	8.0 - 9.5	32.8	12.1	637	9.7	15.1	19	63	65	3525	-
	LT315/75R16	E/10	SL	127/124R	28037124	8.5	8.0 - 11.0	34.6	12.3	606	9.6	15.6	20	72	65	3860	-
17"	235/75R17	-	SL	109T	28034737	6.5	6.0 - 8.0	31.1	9.1	679	7.2	10.9	14	38	44	2271	660-A-B
	245/65R17	-	SL	111T	28034768	7.0	7.0 - 8.5	29.5	9.7	719	8.1	10.3	13	39	50	2403	660-A-B
	245/70R17	-	XL	114T	28034747	7.0	6.5 - 8.0	30.6	9.8	691	8.0	10.3	13	40	50	2601	660-A-B
	245/75R17	-	SL	112T	28034764	7.0	6.5 - 8.0	31.5	9.8	671	7.5	10.3	13	41	44	2469	660-A-B
	255/65R17	-	XL	114T	28034713	7.5	7.0 - 9.0	30.1	10.3	708	8.4	10.3	13	41	50	2601	660-A-B
	255/70R17	-	SL	112T	28034769	7.5	6.5 - 8.5	31.1	10.2	679	8.3	10.3	13	42	44	2469	660-A-B
	265/65R17	-	XL	116T	28034721	8.0	7.5 - 9.5	30.6	10.6	697	8.8	10.3	13	42	50	2756	660-A-B
	265/70R17	-	SL	115T	28034300	8.0	7.0 - 9.0	31.7	10.8	668	8.7	10.8	14	47	44	2679	660-A-B
	P285/70R17	-	SL	117T	28034306	8.5	7.5 - 9.5	32.8	11.3	647	9.2	10.8	14	50	44	2833	660-A-B
	LT235/80R17	E/10	SL	120/117R	28037616	6.5	6.0 - 7.5	31.8	9.1	655	6.9	13.6	17	49	80	3085	-
	LT245/70R17	E/10	SL	119/116S	28030718	7.0	6.5 - 8.0	30.8	9.8	676	8.0	13.6	17	48	80	3000	-
	LT245/75R17	E/10	SL	121/118S	28030711	7.0	6.5 - 7.5	31.7	9.5	657	7.5	13.6	17	51	80	3195	-
	LT265/70R17	E/10	SL	121/118S	28030712	8.0	7.0 - 8.5	31.9	10.7	653	8.7	14.1	18	53	80	3195	-
	LT285/70R17	E/10	SL	121/118S	28030612	8.5	7.5 - 9.0	33.0	11.6	632	9.3	14.6	18	59	80	3195	-
	LT285/75R17	E/10	SL	121/118S	28030129	8.0	7.5 - 9.5	33.9	11.1	617	8.7	14.6	18	65	80	3195	-
LT315/70R17	E/10	SL	121/118S	28030123	10.0	8.0 - 11.0	34.6	12.7	604	10.0	15.6	20	73	65	3195	-	
35x12.50R17LT	E/10	SL	121R	28037113	9.5	8.5 - 11.0	34.8	12.5	602	9.8	15.6	20	75	65	3195	-	

Never mix tires of different size, construction or type on an axle except for temporary use as a spare tire. Always refer to vehicle owners manual for proper tire fitment.

No UTQG rating for LT sizes.

## LIMITED TREAD LIFE WARRANTY: 55,000 MILES / 89,000 km

Wheel Dia.	Size	Load Range	Extra Load	Load Index/Speed Rating	Item Number	Measuring Rim Width (in)	Approved Rim Width Range (in)	Overall Diameter (in)	Section Width (in)	Revolutions Per Mile	Tread Width (in)	Tread Depth (mm)	Tread Depth (/32")	Tire Weight (lbs.)	Max PSI (Cold)	Max Load (lbs.)	UTQG
18"	255/70R18	-	SL	113T	28034841	7.5	6.5 - 8.5	32.1	10.2	658	8.3	10.3	13	43	44	2535	660-A-B
	265/60R18	-	XL	114T	28034854	8.0	7.5 - 9.5	30.6	10.5	694	8.5	10.3	13	43	50	2601	660-A-B
	265/65R18	-	SL	114T	28034823	8.0	7.5 - 9.5	31.5	10.6	675	8.8	10.3	13	46	44	2601	660-A-B
	265/70R18	-	SL	116T	28034809	8.0	7.0 - 9.0	32.6	10.8	646	8.7	10.8	14	47	44	2756	660-A-B
	275/65R18	-	SL	116T	28034901	8.0	7.5 - 9.5	32.1	10.9	663	9.1	10.8	14	47	44	2756	660-A-B
	LT265/70R18	E/10	SL	124/121S	28030127	8.0	7.0 - 9.0	32.9	10.7	634	8.7	14.1	18	60	80	3525	-
	LT275/65R18	E/10	SL	123/120S	28030803	8.0	7.5 - 9.0	32.1	10.7	651	9.1	14.6	18	60	80	3415	-
	LT275/70R18	E/10	SL	125/122S	28030703	8.0	7.0 - 8.5	33.4	11.0	624	9.0	14.6	18	61	80	3640	-
	LT285/65R18	E/10	SL	125/122S	28030827	8.5	8.0 - 10	32.6	11.3	642	9.4	14.6	18	64	80	3640	-
	LT305/65R18	E/10	SL	124/121R	28037122	9.0	8.5 - 11.0	33.6	12.0	623	9.6	15.1	19	67	65	3525	-
LT325/65R18	E/10	SL	127/124S	28030126	9.5	9.0 - 12.0	34.6	13.0	605	10.7	15.6	20	77	65	3860	-	
20"	275/55R20	-	XL	117T	28034021	8.5	7.5 - 9.5	31.9	11.1	661	8.9	10.3	13	48	50	2833	660-A-B
	275/60R20	-	SL	115T	28034003	8.0	7.5 - 9.5	33.1	10.8	640	8.9	10.3	13	48	44	2679	660-A-B
	LT265/60R20	E/10	SL	121/118S	28030128	8.0	7.5 - 9.5	32.5	10.2	640	8.6	14.1	18	58	80	3195	-
	LT275/65R20	E/10	SL	126/123S	28030120	8.0	7.5 - 9.5	34.1	10.6	611	9.1	14.6	18	66	80	3750	-
	LT285/55R20	E/10	SL	122/119T	28034121	9.0	8.0 - 10	32.4	11.2	642	9.7	14.6	18	58	80	3305	-
	LT305/55R20	E/10	SL	121/118S	28030952	9.5	8.5 - 11.0	33.2	12.3	626	10.4	15.1	19	71	65	3195	-
	LT325/60R20	E/10	SL	126/123S	28030125	9.5	9.0 - 12.0	35.4	12.8	591	10.9	15.6	20	84	65	3750	-
	35x12.50R20LT	E/10	SL	121R	28037118	10.0	8.5 - 11.0	34.6	12.5	603	10.6	15.6	20	76	65	3195	-

Never mix tires of different size, construction or type on an axle except for temporary use as a spare tire. Always refer to vehicle owners manual for proper tire fitment.

No UTQG rating for LT sizes.



# WILDPEAK M/T

MAXIMUM OFF-ROAD TRACTION BUILT FOR THE TOUGHEST TERRAIN

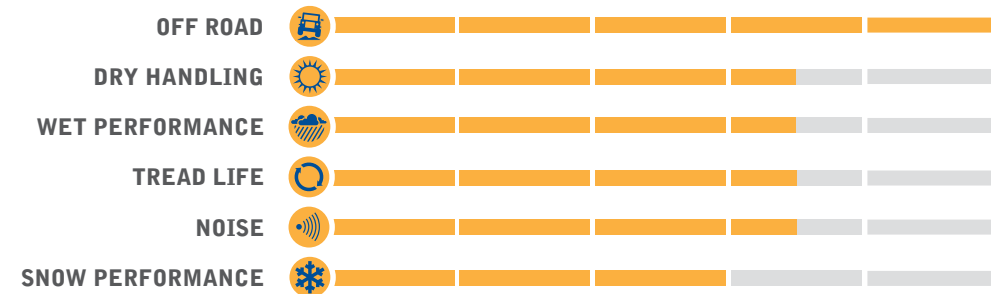
Trusted by the pros to take on the harshest conditions, the tough **WILDPEAK M/T** is built to get you there and back whether you're on the pavement, mud, snow or rocks. The M/T features Falken's proprietary three-ply **DURASPEC™** Sidewall Technology developed to sustain the most punishing off-road conditions. **DURASPEC™** also features two high ply turn-ups that provide an additional layer of protection and durability. An aggressive upper sidewall provides additional traction at low air pressures on rugged terrain. The **WILDPEAK M/T** also features exceptional road manners thanks to an optimized variable three-pitch tread pattern and precision manufacturing technology.

**AVAILABLE TIRE SIZES**  
25 SIZES

**AVAILABLE RIM SIZING**  
15" – 20"

**SPEED RATING**  
Q

## PERFORMANCE RATINGS\*



**POPULAR FITMENTS:**  
CHEVROLET SILVERADO  
FORD F-SERIES  
JEEP CHEROKEE  
JEEP WRANGLER  
NISSAN TITAN  
NISSAN XTERRA  
RAM TRUCKS  
TOYOTA FJ CRUISER  
TOYOTA TACOMA  
TOYOTA TUNDRA

## TIRE HIGHLIGHTS

- RUGGED AND RIGID TREAD BLOCKS**  
feature step-down supports on the center blocks to provide tread-pattern rigidity in the contact patch, enhancing stability and handling while preventing stones from becoming trapped in the grooves.
- AGGRESSIVE UPPER SIDEWALL**  
along with offset shoulder blocks protect the tire from sharp rocks and provide additional off-road traction at low tire pressures or in off-camber situations.
- MUD AND ROCK DEFENSE FEATURES**  
shed mud from the tread grooves to prevent loss of traction, ensuring maximum grip while preventing rocks from puncturing the base of the tread.
- OPTIMIZED TREAD PATTERN**  
with three variable pitches positions the tread blocks to provide an exceptionally quiet ride.

## SIZES AND SPECIFICATIONS

NEXT PAGE



### DURASPEC™ THREE PLY SIDEWALL

is a Falken proprietary technology developed to endure the most punishing off-road conditions. **DURASPEC™** also features two high ply turn-ups that provide an additional layer of protection.

\*Performance ratings are based on a scale of 1 to 5 with 5 being best. Ratings are in comparison to other Falken Tires products in the same category.

Product specifications for illustrative purposes only. Tread design, technical information and tire construction subject to change without notice and may vary by size.

# WILDPEAK M/T

MAXIMUM OFF-ROAD TRACTION BUILT FOR THE TOUGHEST TERRAIN

Wheel Dia.	Size	Load Range	Extra Load	Load Index/Speed Rating	Item Number	Measuring Rim Width (in)	Approved Rim Width Range (in)	Overall Diameter (in)	Section Width (in)	Revolutions Per Mile	Tread Width (in)	Tread Depth (mm)	Tread Depth (32")	Tire Weight (lbs.)	Max PSI (Cold)	Max Load (lbs.)	UTQG
15"	30x9.50R15LT	C/6	SL	104Q	28516312	7.5	6.5 - 8.5	29.6	9.6	713	7.2	15	19	46.5	50	1985	-
	31x10.50R15LT	C/6	SL	109Q	28516322	8.5	7 - 9	30.7	10.5	687	8.0	15	19	54.0	50	2270	-
	33x12.50R15LT	C/6	SL	108Q	28516518	10.0	8.5 - 11	32.6	13.0	650	9.4	16	21	75.0	35	2205	-
	35x12.50R15LT	C/6	SL	113Q	28516920	10.0	8.5 - 11	34.5	12.9	617	9.4	16	21	76.7	35	2535	-
16"	LT235/85R16	E/10	SL	120/116Q	28516994	6.5	6 - 7.5	31.8	9.2	656	7.0	14	18	52.7	80	3042	-
	LT245/75R16	E/10	SL	120/116Q	28516628	7.0	6.5 - 8	30.4	9.9	686	7.8	15	18	55.3	80	3042	-
	LT265/75R16	E/10	SL	123/120Q	28516639	7.5	7 - 8	32.0	10.6	653	8.4	15	19	60.0	80	3415	-
	LT285/75R16	E/10	SL	126/123Q	28516611	8.0	7.5 - 9	32.7	11.5	638	9.1	16	20	67.7	80	3750	-
	LT315/75R16	E/10	SL	127/124Q	28516934	8.5	8 - 11	34.7	12.6	603	10.0	17	21	77.8	65	3860	-
17"	LT235/80R17	E/10	SL	120/117Q	28516616	6.5	6 - 7.5	32.0	9.2	651	7.0	14	18	51.6	80	3085	-
	LT255/75R17	C/6	SL	111/108Q	28516714	7.0	6.5 - 8.5	32.3	10.2	646	8.0	14	18	53.1	50	2405	-
	LT265/70R17	E/10	SL	121/118Q	28516702	8.0	7 - 8.5	31.7	10.6	659	8.4	15	19	56.9	80	3195	-
	LT285/70R17	E/10	SL	121/118Q	28516612	8.5	7.5 - 9	32.9	11.4	635	9.1	16	20	63.3	80	3195	-
	LT295/70R17	E/10	SL	121/118Q	28516936	8.5	7.5 - 10	33.4	11.7	625	9.4	16	20	69.0	80	3195	-
	LT315/70R17	E/10	SL	121/118Q	28516932	9.5	8 - 11	34.6	12.8	604	9.4	16	20	80.7	65	3195	-
	33x12.50R17LT	D/8	SL	120Q	28516710	10.0	8.5 - 11	32.7	12.5	643	10.1	16	21	68.8	65	3085	-
	35x12.50R17LT	E/10	SL	121Q	28516995	10.0	8.5 - 11	34.8	13.0	609	9.4	16	21	79.6	65	3195	-
37x12.50R17LT	D/8	SL	124Q	28516921	10.0	8.5 - 11	36.7	12.9	577	9.4	16	21	81.8	50	3525	-	

Never mix tires of different size, construction or type on an axle except for temporary use as a spare tire. Always refer to vehicle owners manual for proper tire fitment.

Wheel Dia.	Size	Load Range	Extra Load	Load Index/Speed Rating	Item Number	Measuring Rim Width (in)	Approved Rim Width Range (in)	Overall Diameter (in)	Section Width (in)	Revolutions Per Mile	Tread Width (in)	Tread Depth (mm)	Tread Depth (32")	Tire Weight (lbs.)	Max PSI (Cold)	Max Load (lbs.)	UTQG
18"	LT275/70R18	E/10	SL	125/122Q	28516703	8.0	7 - 8.5	33.4	10.9	624	8.7	16	20	66.1	80	3640	-
	LT285/65R18	E/10	SL	125/122Q	28516827	8.5	8 - 10	32.8	11.6	637	9.1	15	19	64.6	80	3640	-
	35x12.50R18LT	E/10	SL	123Q	28516999	10.0	8.5 - 11	34.7	13.0	607	10.1	17	21	78.7	65	3415	-
20"	LT305/55R20	E/10	SL	121/118Q	28516952	9.5	8.5 - 11	33.3	12.3	625	10.1	15	19	70.1	65	3195	-
	33x12.50R20LT	E/10	SL	114Q	28516906	10.0	8.5 - 11	32.8	12.7	638	10.4	16	21	70.3	65	2600	-
	35x12.50R20LT	E/10	SL	121Q	28516905	10.0	8.5 - 11	34.7	12.6	604	9.4	16	21	72.5	65	3195	-
	37x13.50R20LT	E/10	SL	127Q	28516951	11.0	8.5 - 11	36.7	13.6	573	10.9	16	21	87.3	65	3860	-

Never mix tires of different size, construction or type on an axle except for temporary use as a spare tire. Always refer to vehicle owners manual for proper tire fitment.



# WILDPEAK H/T

## ALL-SEASON PERFORMANCE HANDLING AND LONG TREAD LIFE

The **WILDPEAK H/T** offers a combination of superb dry handling and responsive wet braking on all roadway surfaces. Falken has optimized traction and control through the combination of a non-directional tread pattern, high-tension casing ply and stiff wide steel belts in order to provide stability and comfort for pick-up trucks and SUVs alike whatever the season. With excellent value from its long lasting tread and optimal ride comfort, the WILDPEAK H/T leaves the competition in the dust.

**AVAILABLE TIRE SIZES**  
45 SIZES

**AVAILABLE RIM SIZING**  
15" – 20"

**SPEED RATING**  
S • T • H

**LIMITED TREAD LIFE WARRANTY**  
60,000 MILES / 96,000 km

**RATING**  
M+S RATED

**RIDE GUARANTEE**  
30 DAYS

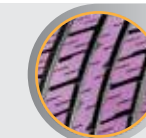
### PERFORMANCE RATINGS\*



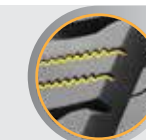
#### POPULAR FITMENTS:

- CADILLAC ESCALADE
- CHEVROLET SILVERADO 1500
- FORD F-150
- FORD ESCAPE
- FORD EXPLORER
- HONDA PILOT
- HONDA RIDGELINE
- JEEP GRAND CHEROKEE
- TOYOTA FJ CRUISER
- TOYOTA HIGHLANDER

### TIRE HIGHLIGHTS



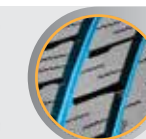
**SYMMETRIC NON-DIRECTIONAL FIVE-RIB TREAD DESIGN**  
provides optimal handling stability and comfort while allowing cross-rotation patterns to fight irregular wear.



**MULTI-WAVE LATERAL SIPES**  
enhance wet traction and increase all-season performance.



**VARIABLE-PITCH SHOULDER DESIGN**  
provides exceptional all-season performance while reducing tire noise.



**FOUR LARGE CIRCUMFERENTIAL STRAIGHT GROOVES**  
effectively evacuate water and significantly enhance hydroplaning resistance for superb wet handling.

### SIZES AND SPECIFICATIONS

NEXT PAGE

\*Performance ratings are based on a scale of 1 to 5 with 5 being best. Ratings are in comparison to other Falken Tires products in the same category.

Product images are for illustrative purposes only. Tread design, technical information and tire construction subject to change without notice and may vary by size.

# WILDPEAK H/T

ALL-SEASON PERFORMANCE HANDLING AND LONG TREAD LIFE

## LIMITED TREAD LIFE WARRANTY: 60,000 MILES / 96,000 km

Wheel Dia.	Size	Load Range	Extra Load	Load Index/Speed Rating	Item Number	Measuring Rim Width (in)	Approved Rim Width Range (in)	Overall Diameter (in)	Section Width (in)	Revolutions Per Mile	Tread Width (in)	Tread Depth (mm)	Tread Depth (32")	Tire Weight (lbs.)	Max PSI (Cold)	Max Load (lbs.)	UTQG
15"	30x9.5R15LT†	C/6	SL	104S	28800512	7.5	6.5 - 8.5	29.5	9.7	716	7.2	12	15	41	50	1985	-
	31x10.5R15LT†	C/6	SL	109S	28800513	8.5	7.0 - 9.0	30.5	10.7	693	8.1	12	15	45	50	2270	-
	225/75R15†	-	SL	102T	28804528	6.0	6 - 7.5	28.3	8.9	749	6.4	9	11	33	44	1874	600-A-B
	LT235/75R15†	C/6	SL	104/101S	28800520	6.5	6.0 - 7.0	28.8	9.3	724	7.1	12	16	38	50	1985	-
	235/75R15†	-	XL	109T	28804529	6.5	6 - 8	28.8	9.1	734	6.7	9	12	33	50	2271	600-A-B
16"	215/70R16	-	SL	100T	28804603	6.5	5.5 - 7	27.8	8.7	757	6.5	9	11	28	44	1764	600-A-B
	225/70R16	-	SL	103T	28804693	6.5	6.0 - 7.5	28.3	8.6	733	6.8	9	12	32	44	1929	600-A-B
	LT225/75R16	E/10	SL	115/112S	28800627	6.0	6.0 - 7.0	29.3	8.4	711	6.8	12	15	41	80	2680	-
	225/75R16†	-	XL	108T	28804484	6.0	6 - 7.5	29.2	8.7	722	6.4	9	11	34	50	2205	600-A-B
	235/70R16	-	SL	106T	28804609	7.0	6 - 8	28.9	9.4	729	7.0	9	12	33	44	2094	600-A-B
	235/75R16	-	XL	112T	28804610	6.5	6 - 8	29.8	9.1	710	6.7	9	12	36	50	2469	600-A-B
	LT235/85R16	E/10	SL	120/116S	28800474	6.5	6 - 7.5	31.8	9.0	658	6.7	13	16	48	80	3042	-
	245/70R16†	-	SL	107T	28804604	7.0	6.5 - 8	29.6	9.6	704	7.4	9	12	35	44	2149	600-A-B
	245/75R16†	-	SL	111S	28800608	7.0	6.5 - 8.0	30.4	9.8	686	7.0	9	12	37	44	2403	600-A-B
	LT245/75R16	E/10	SL	120/116S	28800494	7.0	6.5 - 8.0	30.5	9.8	684	7.4	12	16	49	80	3042	-
	LT245/75R16	C/6	SL	108/104S	28800492	7.0	6.5 - 8.0	30.4	9.8	686	7.4	12	16	41	50	2205	-
	255/70R16	-	SL	111T	28804605	7.5	6.5 - 8.5	30.1	10.2	694	7.6	9	12	35	44	2403	600-A-B
	265/70R16	-	SL	112T	28804606	8.0	7 - 9	30.4	10.5	686	8.0	10	12	39	44	2469	600-A-B
	265/75R16	-	SL	116T	28804607	7.5	7 - 9	31.6	10.6	673	7.6	10	12	41	44	2756	600-A-B
	LT265/75R16	E/10	SL	123/120S	28800505	7.5	7 - 9	31.7	10.6	660	8.0	13	16	56	80	3415	-
	LT285/75R16	E/10	SL	126/123S	28800611	8.0	7.5 - 9.0	32.8	11.2	637	8.7	13	17	62	80	3750	-
	17"	215/65R17	-	SL	99S	59000031	6.5	6.0-7.5	28.0	8.6	755	6.7	8	11	27	44	1709
225/65R17		-	SL	102H	28801775	6.5	6.0 - 8.0	28.5	8.9	743	7.1	9	11	30	51	1874	600-A-A
235/60R17		-	SL	102H	28801717	7.0	6.5 - 8.5	28.1	9.2	753	7.4	10	13	32	51	1874	600-A-A
235/65R17		-	SL	104H	28801790	7.0	6.5 - 8.5	29.1	9.3	729	7.5	9	11	34	51	1984	600-A-B
P235/70R17		-	XL	108T	28804613	7.0	6.0 - 8.0	29.9	9.5	705	7.0	9	12	36	50	2205	600-A-B
245/65R17†		-	SL	107T	28804768	7.0	7 - 8.5	29.4	9.7	721	7.8	9	12	37	44	2149	600-A-B
245/70R17		-	SL	110T	28804617	7.0	6.5 - 8	30.5	9.8	682	7.4	9	12	37	44	2337	600-A-B
265/65R17		-	SL	112T	28804721	8.0	7.5 - 9.5	30.4	10.7	701	8.4	9	12	40	44	2469	600-A-B
LT265/70R17†		E/10	SL	121/118S	28800712	8.0	7.0 - 8.5	31.7	10.9	657	8.2	12	15	57	80	3195	-
265/70R17		-	SL	115T	28804701	8.0	7 - 9	31.5	10.8	661	8.0	10	12	41	44	2679	600-A-B

† Outlined White Sidewall Letters

No UTQG rating for LT sizes.

## LIMITED TREAD LIFE WARRANTY: 60,000 MILES / 96,000 km

Wheel Dia.	Size	Load Range	Extra Load	Load Index/Speed Rating	Item Number	Measuring Rim Width (in)	Approved Rim Width Range (in)	Overall Diameter (in)	Section Width (in)	Revolutions Per Mile	Tread Width (in)	Tread Depth (mm)	Tread Depth (32")	Tire Weight (lbs.)	Max PSI (Cold)	Max Load (lbs.)	UTQG
18"	235/60R18	-	XL	107H	28801816	7.0	6.5 - 8.5	29.1	9.2	725	7.4	10	13	33	50	2149	600-A-A
	235/65R18	-	SL	106H	28801815	7.0	6.5 - 8.5	30.0	9.4	705	7.4	9	11	32	51	2094	600-A-A
	245/60R18	-	SL	105H	28801811	7.0	7.0 - 8.5	29.6	9.6	716	7.7	11	13	36	51	2039	600-A-A
	255/65R18	-	SL	111H	28801822	7.5	7.0 - 9.0	31.1	10.2	683	8.0	9	12	39	51	2403	600-A-A
	255/70R18	-	SL	113H	28801841	7.5	6.5 - 8.5	32.2	10.2	656	7.6	9	11	41	51	2535	600-A-A
	265/60R18	-	SL	110H	28801854	8.0	7.5 - 9.5	30.4	10.6	696	8.3	11	14	39	51	2337	600-A-A
	265/65R18	-	SL	114H	28801823	8.0	7.5 - 9.5	31.7	10.5	671	8.3	9	12	42	51	2601	600-A-A
	265/70R18	-	SL	116T	28804809	8.0	7.0 - 9.0	32.5	10.8	650	8.0	10	12	45	44	2756	600-A-B
	LT275/65R18	E/10	SL	123/120S	28800803	8.0	7.5 - 9.0	32.1	10.7	651	8.7	12	16	61	80	3415	-
	275/65R18	-	SL	116H	28801901	8.0	7.5 - 9.5	32.1	10.8	663	8.6	9	12	45	51	2756	600-A-A
19"	255/60R19	-	SL	109H	28801813	7.5	7.0 - 9.0	31.1	10.2	680	8.0	11	13	39	51	2271	600-A-A
20"	275/55R20	-	XL	117H	28801021	8.5	7.5 - 9.5	31.9	10.9	663	8.9	11	14	46	50	2833	600-A-A
	275/60R20	-	SL	115H	28801003	8.0	7.5 - 9.5	33.0	10.8	642	8.7	10	12	45	51	2679	600-A-A
	LT275/65R20	E/10	SL	126/123S	28800025	8.0	7.5 - 9.5	34.1	10.7	611	8.7	12	16	65	80	3750	-

No UTQG rating for LT sizes.





# ZIEX S/TZ05

## ALL-SEASON PERFORMANCE AND COMFORT FOR LUXURY SUVs AND LIGHT TRUCKS

The **ZIEX S/TZ05** features the latest in tread compound and construction technology designed specifically for SUV and 1/2 ton sport-truck applications. With an advanced M+S all-season non-directional tread design, the S/TZ05 allows rotation in all directions, optimizing tread life. With double taper-cut tread blocks and staggered shoulder lug grooves, the S/TZ05 is a smooth, quiet and dynamic tire. Available from 18 to 24-inch applications, this tire covers many of today's popular SUV and LT wheel fitments. Whether you're cruising through the city or driving on the open highway, the S/TZ05 provides unparalleled performance and comfort.

**AVAILABLE TIRE SIZES**  
22 SIZES

**AVAILABLE RIM SIZING**  
18" – 24"

**SPEED RATING**  
H • V

**LIMITED TREAD LIFE WARRANTY**  
50,000 MILES / 80,000 km

**RATING**  
M+S RATED

**RIDE GUARANTEE**  
30 DAYS

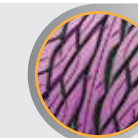
### PERFORMANCE RATINGS\*



#### POPULAR FITMENTS:

- ACURA RDX
- AUDI Q5
- BMW X5
- CADILLAC ESCALADE
- CHEVROLET AVALANCHE
- CHEVROLET TAHOE
- DODGE NITRO
- FORD EXPLORER
- NISSAN ARMADA
- PORSCHE CAYENNE
- TOYOTA HIGHLANDER
- VOLVO XC90

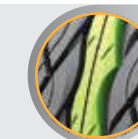
### TIRE HIGHLIGHTS



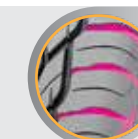
**FIVE-RIB SYMMETRIC TREAD DESIGN**  
provides increased high-speed stability and the freedom of tire rotation, enhancing tread life.



**WIDE SHOULDER BLOCKS**  
increase tread stiffness allowing for maximum wet and dry handling and stability.



**SOLID CENTER RIB**  
offers excellent handling response especially in high-speed conditions.



**WIDE AND NARROW SHOULDER LUG GROOVES**  
designed to optimize noise reduction.

### SIZES AND SPECIFICATIONS

NEXT PAGE

\*Performance ratings are based on a scale of 1 to 5 with 5 being best. Ratings are in comparison to other Falken Tires products in the same category.

Product images are for illustrative purposes only. Tread design, technical information and tire construction subject to change without notice and may vary by size.

# ZIEX S/TZ05

ALL-SEASON PERFORMANCE AND COMFORT FOR LUXURY SUVs AND LIGHT TRUCKS

## LIMITED TREAD LIFE WARRANTY: 50,000 MILES / 80,000 km

Wheel Dia.	Size	Extra Load	Load Index/Speed Rating	Item Number	Measuring Rim Width (in)	Approved Rim Width Range (in)	Overall Diameter (in)	Section Width (in)	Revolutions Per Mile	Tread Width (in)	Tread Depth (mm)	Tread Depth (/32")	Tire Weight (lbs.)	Max PSI (Cold)	Max Load (lbs.)	UTQG
18"	235/60R18	XL	107V	28052816	7.0	6.5 - 8.5	29.1	9.3	726	7.6	8	10	33	50	2149	460-A-A
	255/55R18	XL	109V	28052845	8.0	7.0 - 9.0	29.0	10.4	728	8.7	8	10	38	50	2271	460-A-A
	265/60R18	SL	110V	28052644	8.0	7.5-9.5	30.5	10.7	696	8.3	9	12	38	51	2337	460-A-A
19"	245/55R19	SL	103H	28051814	7.5	7.0 - 8.5	29.6	9.9	711	7.9	10	13	35	51	1929	460-A-A
	255/60R19	SL	109H	28051813	7.5	7.0 - 9.0	31.1	10.2	680	8.0	9	12	37	51	2271	460-A-A
20"	245/50R20	SL	102H	28051026	7.5	7.0 - 8.5	29.7	9.9	708	8.2	10	13	36	51	1874	460-A-A
	255/50R20	XL	109H	28051946	8.0	7.0 - 9.0	30.2	10.2	697	8.5	10	13	39	50	2271	460-A-A
	265/50R20	XL	111H	28051011	8.5	7.5 - 9.5	30.5	10.7	690	8.9	11	14	40	50	2403	460-A-A
	275/40R20	XL	106H	28051947	9.5	9.5 - 11.0	28.6	10.9	727	9.5	10	13	37	50	2094	460-A-A
	275/45R20	XL	110H	28051016	9.0	8.5 - 10.5	29.7	10.6	701	9.1	11	14	38	50	2337	460-A-A
	275/55R20	XL	117H	28051021	8.5	7.5 - 9.5	31.9	11.0	663	8.9	11	14	45	50	2833	460-A-A
	275/60R20	SL	115H	28051003	8.0	7.5 - 9.5	33.0	11.0	641	8.7	10	13	46	51	2670	460-A-A
	295/45R20	XL	114H	28051018	10.0	9.5 - 11.0	30.3	11.7	688	9.8	11	14	42	50	2601	460-A-A
	305/50R20	XL	120H	28051015	9.5	8.5 - 11.0	31.9	12.4	662	10.2	11	14	49	50	3086	460-A-A

## LIMITED TREAD LIFE WARRANTY: 50,000 MILES / 80,000 km

Wheel Dia.	Size	Extra Load	Load Index/Speed Rating	Item Number	Measuring Rim Width (in)	Approved Rim Width Range (in)	Overall Diameter (in)	Section Width (in)	Revolutions Per Mile	Tread Width (in)	Tread Depth (mm)	Tread Depth (/32")	Tire Weight (lbs.)	Max PSI (Cold)	Max Load (lbs.)	UTQG
22"	265/35R22	XL	102H	28051218	9.5	9.0 - 10.5	29.5	10.5	701	9.3	10	13	37	50	1874	460-A-A
	265/40R22	XL	106H	28051217	9.5	9.0 - 10.5	30.3	10.6	683	9.2	10	13	37	50	2094	460-A-A
	285/40R22	XL	110H	28051216	10.0	9.5 - 11.0	31.0	11.4	670	9.9	11	14	42	50	2337	460-A-A
	285/45R22	XL	114H	28051219	9.5	9.0 - 10.5	32.1	11.0	648	9.4	11	14	43	50	2601	460-A-A
	305/40R22	XL	114H	28051220	11.0	10.0 - 12.0	31.6	12.3	658	10.6	11	14	45	50	2601	460-A-A
	305/45R22	XL	118H	28051215	10.0	9.5 - 11.5	32.7	12.0	637	10.1	11	14	48	50	2910	460-A-A
24"	295/35R24	XL	110H	28051401	10.5	10.0 - 11.5	32.0	11.6	646	10.3	11	13	45	50	2337	460-A-A
	305/35R24	XL	112H	28051402	11.0	10.0 - 12.0	32.4	12.0	639	10.6	11	13	45	50	2469	460-A-A

Product images are for illustrative purposes only. Tread design, technical information and tire construction subject to change without notice and may vary by size.



# AZENIS FK510

## SUMMER ULTRA HIGH PERFORMANCE

Falken's latest generation ultra high performance summer tire, the **AZENIS FK510** is designed for drivers of premium vehicles looking for excellent grip and outstanding performance. 4D Nano Design enables Falken engineers to optimize new high-performance compounds at the molecular level, enhancing both wear and wet weather traction. Featuring hybrid undertread materials, the FK510 delivers confidence-inspiring handling and stability. The FK510 covers a wide range of today's luxury sport vehicles, including staggered applications, and is available in sizes ranging from 17 to 21-inch.

**AVAILABLE TIRE SIZES**  
45 SIZES

**AVAILABLE RIM SIZING**  
17" – 21"

**SPEED RATING**  
Y • (Y)

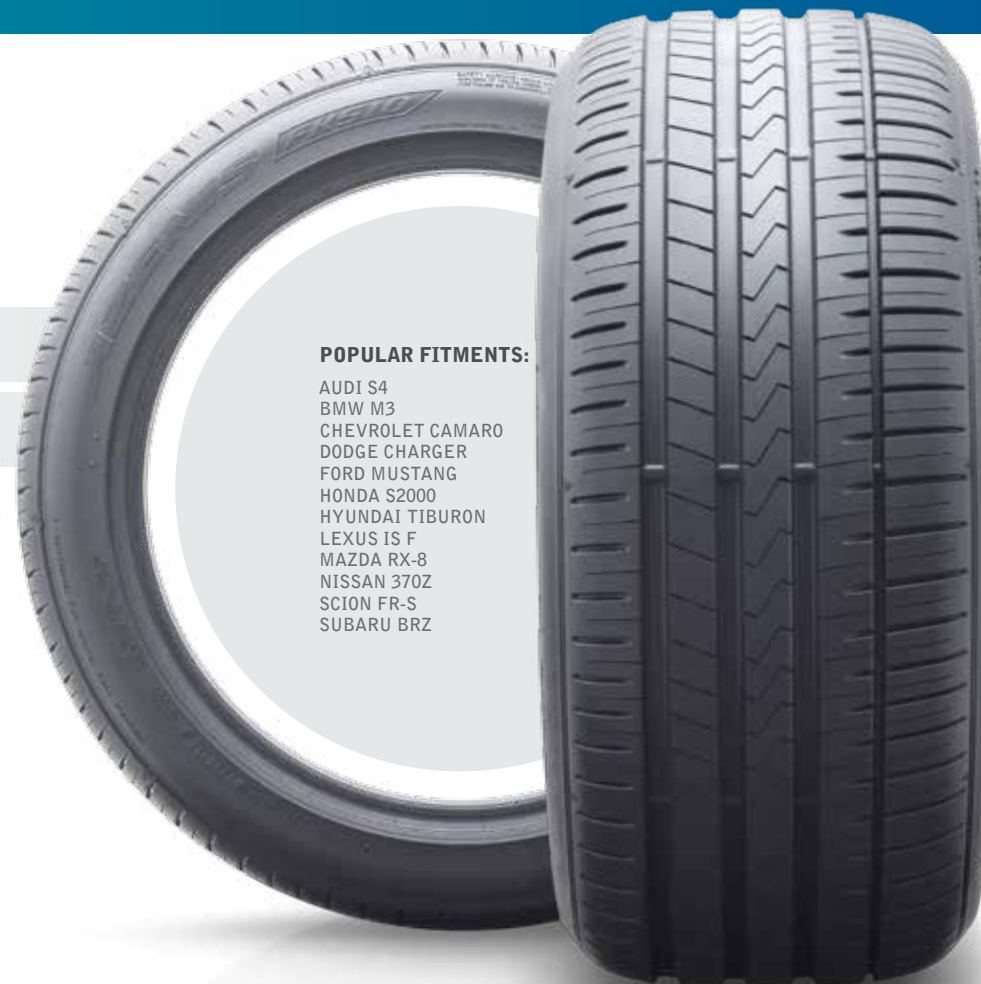
**RIDE GUARANTEE**  
30 DAYS

### PERFORMANCE RATINGS\*



#### 4D NANO DESIGN

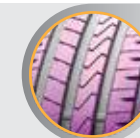
features new compound advancements through biomass materials to help improve tread flexibility and adhesion while simultaneously reducing polymer heat generation.



#### POPULAR FITMENTS:

- AUDI S4
- BMW M3
- CHEVROLET CAMARO
- DODGE CHARGER
- FORD MUSTANG
- HONDA S2000
- HYUNDAI TIBURON
- LEXUS IS F
- MAZDA RX-8
- NISSAN 370Z
- SCION FR-S
- SUBARU BRZ

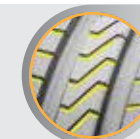
### TIRE HIGHLIGHTS



**ADAPTIVE CONSTANT PRESSURE (ACP) PATTERN DESIGN**  
provides enhanced tire tread to road surface pressure distribution, improving both directional stability and vehicle-stopping distances.



**HYBRID UNDERTREAD CAP PLY**  
provides added rigidity and high-speed stability through the use of both aramid and nylon materials.



**SWITCHBACK SIPING**  
helps optimize contact surface while cornering in wet conditions, penetrating the water surface and enhancing cornering performance.



**VARIABLE SIPE DEPTH**  
across the surface of the tread allows for controlled flexibility while maintaining overall block rigidity.

### SIZES AND SPECIFICATIONS

NEXT PAGE

\*Performance ratings are based on a scale of 1 to 5 with 5 being best. Ratings are in comparison to other Falken Tires products in the same category.

Product images are for illustrative purposes only. Tread design, technical information and tire construction subject to change without notice and may vary by size.

# AZENIS FK510

## SUMMER ULTRA HIGH PERFORMANCE

Wheel Dia.	Size	Extra Load	Load Index/Speed Rating	Item Number	Measuring Rim Width (in)	Approved Rim Width Range (in)	Overall Diameter (in)	Section Width (in)	Revolutions Per Mile	Tread Width (in)	Tread Depth (mm)	Tread Depth (/32")	Tire Weight (lbs.)	Max PSI (Cold)	Max Load (lbs.)	UTQG
17"	215/45ZR17	XL	91Y	28032372	7.0	7.0 - 8.0	24.7	8.5	842	7.2	7.9	10.0	20.5	50	1356	300-AA-A
	225/45ZR17	XL	94Y	28039592	7.5	7.0 - 8.5	25.0	8.9	834	7.6	8.0	10.1	20.7	50	1477	300-AA-A
	235/45ZR17	XL	97Y	28036088	8.0	7.5 - 9.0	25.4	9.4	821	7.9	7.9	10.0	22.0	50	1609	300-AA-A
	245/40ZR17	XL	95Y	28032997	8.5	8.0 - 9.5	24.8	9.9	840	8.4	7.9	10.0	22.9	50	1521	300-AA-A
	245/45ZR17	XL	99Y	28038218	8.0	7.5 - 9.0	25.7	9.7	813	8.2	7.9	10.0	22.5	50	1709	300-AA-A
18"	225/40ZR18	XL	92(Y)	28033160	8.0	7.5 - 9.0	25.2	9.1	826	7.7	8.0	10.1	22.3	50	1389	300-AA-A
	225/45ZR18	XL	95(Y)	28032674	7.5	7.0 - 8.5	26.0	8.9	800	7.6	8.0	10.1	21.6	50	1521	300-AA-A
	235/40ZR18	XL	95(Y)	28039762	8.5	8.0 - 9.5	25.5	9.6	818	8.1	8.0	10.1	23.6	50	1521	300-AA-A
	245/35ZR18	XL	92Y	28031525	8.5	8.0 - 9.5	24.8	9.9	837	8.8	7.8	9.8	22.3	50	1389	300-AA-A
	245/40ZR18	XL	97Y	28034669	8.5	8.0 - 9.5	25.8	9.9	808	8.4	8.0	10.1	24.7	50	1609	300-AA-A
	245/45ZR18	XL	100(Y)	28036955	8.0	7.5 - 9.0	26.7	9.7	783	8.2	8.0	10.1	24.0	50	1764	300-AA-A
	255/35ZR18	XL	94(Y)	28036278	9.0	8.5 - 10.0	25.1	10.4	829	9.2	7.8	9.8	23.8	50	1477	300-AA-A
	255/40ZR18	XL	99(Y)	28038585	9.0	8.5 - 10.0	26.1	10.4	798	8.8	7.9	10.0	25.4	50	1709	300-AA-A
	265/35ZR18	XL	97(Y)	28039629	9.5	9.0 - 10.5	25.4	10.8	818	9.5	7.6	9.6	25.4	50	1609	300-AA-A
	275/35ZR18	XL	99(Y)	28038773	9.5	9.0 - 11.0	25.6	11.1	813	9.9	7.6	9.6	26.2	50	1709	300-AA-A
	275/40ZR18	SL	99Y	28031904	9.5	9.0 - 11.0	26.7	11.1	781	9.5	7.7	9.7	27.6	51	1709	300-AA-A
19"	225/35ZR19	XL	88(Y)	28036400	8.0	7.5 - 9.0	25.2	9.1	818	8.1	7.8	9.8	22.0	50	1235	300-AA-A
	225/45ZR19	XL	96Y	28037512	7.5	7.0 - 8.5	27.0	8.9	769	7.6	7.9	10.0	24.0	50	1565	300-AA-A
	235/35ZR19	XL	91(Y)	28032322	8.5	8.0 - 9.5	25.5	9.6	813	8.4	7.9	10.0	23.4	50	1356	300-AA-A
	245/35ZR19	XL	93(Y)	28037499	8.5	8.0 - 9.5	25.8	9.9	803	8.8	7.8	9.8	24.3	50	1433	300-AA-A
	245/40ZR19	XL	98(Y)	28031800	8.5	8.0 - 9.5	26.8	9.9	774	8.4	7.9	10.0	25.4	50	1653	300-AA-A
	245/45ZR19	XL	102(Y)	28034353	8.0	7.5 - 9.0	27.8	9.7	751	8.2	7.9	10.0	26.9	50	1874	300-AA-A
	255/30ZR19	XL	91(Y)	28037384	9.0	8.5 - 9.5	25.1	10.4	821	9.3	7.7	9.7	23.8	50	1356	300-AA-A
	255/35ZR19	XL	96(Y)	28035585	9.0	8.5 - 10.0	26.1	10.4	795	9.2	7.8	9.8	25.6	50	1565	300-AA-A
	255/40ZR19	XL	100(Y)	28039325	9.0	8.5 - 10.0	27.1	10.4	767	8.8	7.9	10.0	27.1	50	1764	300-AA-A
	275/35ZR19	XL	100(Y)	28034137	9.5	9.0 - 11.0	26.7	11.1	781	9.9	7.6	9.6	28.4	50	1764	300-AA-A
	275/40ZR19	XL	105(Y)	28038888	9.5	9.0 - 11.0	27.8	11.1	751	9.5	7.7	9.7	28.4	50	2039	300-AA-A
	285/35ZR19	XL	103(Y)	28032808	10.0	9.5 - 11.0	27.0	11.6	771	10.2	7.4	9.3	29.1	50	1929	300-AA-A
	295/30ZR19	XL	100Y	28033927	10.5	10.0 - 11.0	26.1	12.0	795	10.8	7.5	9.4	28.2	50	1764	300-AA-A

Wheel Dia.	Size	Extra Load	Load Index/Speed Rating	Item Number	Measuring Rim Width (in)	Approved Rim Width Range (in)	Overall Diameter (in)	Section Width (in)	Revolutions Per Mile	Tread Width (in)	Tread Depth (mm)	Tread Depth (/32")	Tire Weight (lbs.)	Max PSI (Cold)	Max Load (lbs.)	UTQG
20"	245/30ZR20	XL	90(Y)	28039609	8.5	8.0 - 9.0	25.8	9.9	800	8.9	7.8	9.8	24.3	50	1323	300-AA-A
	245/35ZR20	XL	95(Y)	28033244	8.5	8.0 - 9.5	26.8	9.9	774	8.8	7.8	9.8	25.4	50	1521	300-AA-A
	245/40ZR20	XL	99(Y)	28031318	8.5	8.0 - 9.5	27.8	9.9	747	8.4	7.9	10.0	26.5	50	1709	300-AA-A
	245/45ZR20	XL	103Y	28039274	8.0	7.5 - 9.0	28.7	9.7	725	8.2	7.9	10.0	28.0	50	1929	300-AA-A
	255/30ZR20	XL	92(Y)	28034117	9.0	8.5 - 9.5	26.1	10.4	790	9.3	7.7	9.7	25.1	50	1389	300-AA-A
	255/35ZR20	XL	97(Y)	28036744	9.0	8.5 - 10.0	27.1	10.4	767	9.2	7.8	9.8	26.9	50	1609	300-AA-A
	255/40ZR20	XL	101(Y)	28036572	9.0	8.5 - 10.0	28.1	10.4	740	8.8	7.9	10.0	28.2	50	1819	300-AA-A
	255/45ZR20	XL	105Y	28039729	8.5	8.0 - 9.5	29.2	10.2	715	8.6	7.9	10.0	29.3	50	2039	300-AA-A
	275/30ZR20	XL	97(Y)	28032956	9.5	9.0 - 10.0	26.5	11.1	778	10.0	7.5	9.4	27.1	50	1609	300-AA-A
	275/35ZR20	XL	102(Y)	28036351	9.5	9.0 - 11.0	27.6	11.1	753	9.9	7.6	9.6	29.1	50	1874	300-AA-A
	275/40ZR20	XL	106Y	28036319	9.5	9.0 - 11.0	28.7	11.1	725	9.5	7.7	9.7	30.4	50	2094	300-AA-A
285/30ZR20	XL	99(Y)	28038200	10.0	9.5 - 10.5	26.8	11.6	774	10.4	7.3	9.2	28.0	50	1709	300-AA-A	
285/35ZR20	XL	104(Y)	28032622	10.0	9.5 - 11.0	28.0	11.6	745	10.2	7.4	9.3	29.8	50	1984	300-AA-A	
295/30ZR20	XL	101(Y)	28031522	10.5	10.0 - 11.0	27.1	12.0	767	10.8	7.3	9.2	29.3	50	1819	300-AA-A	
21"	245/35ZR21	XL	96(Y)	28039049	8.5	8.0 - 9.5	27.8	9.9	745	8.8	7.8	9.8	26.0	50	1565	300-AA-A
	265/35ZR21	XL	101(Y)	28032384	9.5	9.0 - 10.5	28.4	10.8	730	9.5	7.6	9.6	29.3	50	1819	300-AA-A

Product images are for illustrative purposes only. Tread design, technical information and tire construction subject to change without notice and may vary by size.



# AZENIS RT615K+

## COMPETITION-PROVEN PERFORMANCE

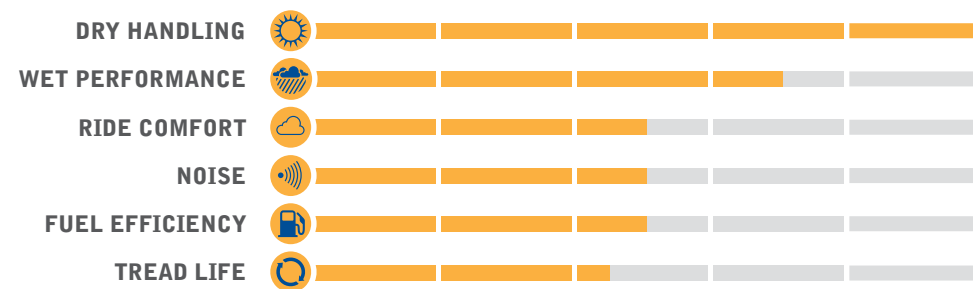
Developed for the maximum performance-minded driver, the **AZENIS RT615K+** is derived from the original competition-winning RT615K. The PLUS encompasses an all-new digitally-engineered, nanotech-formulated compound for superior grip and excellent handling. Its confidence inspiring straight line and cornering traits allow drivers to push the limits of their vehicle in safe, closed-course environments, while its street-capable durability and DOT approval allow for street-legal daily use as well. With 21 sizes from 14 to 18-inch rim diameters and a 200 A-A UTQG rating, the AZENIS RT615K+ is the ultimate choice for performance compacts, sports coupes, sports sedans and muscle cars.

**AVAILABLE TIRE SIZES**  
21 SIZES

**AVAILABLE RIM SIZING**  
14" – 18"

**SPEED RATING**  
H • W

### PERFORMANCE RATINGS\*



#### 4D NANO DESIGN

features new compound advancements through biomass materials to help improve tread flexibility and adhesion while simultaneously reducing polymer heat generation.



#### POPULAR FITMENTS:

- ACURA INTEGRA
- AUDI TT QUATTRO
- BMW M3
- BMW Z4
- HONDA S2000
- HYUNDAI TIBURON
- MAZDA MIATA
- MITSUBISHI LANCER EVO
- NISSAN 370Z
- PORSCHE 911
- SCION FR-S
- SUBARU BRZ

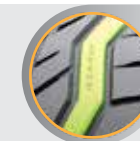
### TIRE HIGHLIGHTS



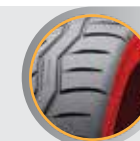
**RACE-INSPIRED TREAD COMPOUND**  
provides excellent traction in all racing conditions.



**MASSIVE SPORT SIDE SHOULDER BLOCKS**  
deliver motorsports-level grip and unsurpassed cornering response.



**SOLID CENTER RIB**  
significantly reduces wheel spin by reducing contact patch void ratio under heavy acceleration.



**HIGH-TENSION CARCASS**  
increases handling response and high-speed stability.

### SIZES AND SPECIFICATIONS

NEXT PAGE

\*Performance ratings are based on a scale of 1 to 5 with 5 being best. Ratings are in comparison to other Falken Tires products in the same category.

Product images are for illustrative purposes only. Tread design, technical information and tire construction subject to change without notice and may vary by size.

# AZENIS RT615K+

## COMPETITION-PROVEN PERFORMANCE

Wheel Dia.	Size	Extra Load	Load Index/Speed Rating	Item Number	Measuring Rim Width (in)	Approved Rim Width Range (in)	Overall Diameter (in)	Section Width (in)	Revolutions Per Mile	Tread Width (in)	Tread Depth (mm)	Tread Depth (/32")	Tire Weight (lbs.)	Max PSI (Cold)	Max Load (lbs.)	UTQG
<b>14"</b>	195/60R14	SL	86H	28533443	6.0	5.5 - 7.0	23.2	7.9	900	6.6	6.3	7.9	18.5	51	1168	200-A-A
	<b>15"</b>	205/50ZR15	XL	89W	28533077	6.5	5.5 - 7.5	23.2	8.2	895	7.6	6.3	7.9	21.2	50	1279
<b>16"</b>	205/40ZR16	XL	83W	28534903	7.5	7.0 - 8.0	22.5	8.5	911	7.2	6.3	7.9	18.3	50	1074	200-A-A
	215/45ZR16	SL	86W	28533766	7.0	7.0 - 8.0	23.6	8.7	768	8.0	6.3	7.9	21.6	51	1168	200-A-A
	225/50ZR16	SL	92W	28538495	7.0	6.0 - 8.0	24.9	9.1	881	8.2	6.3	7.9	24.7	51	1389	200-A-A
<b>17"</b>	205/40ZR17	XL	84W	28537988	7.5	7.0 - 8.0	23.4	8.5	875	7.2	6.3	7.9	19.3	50	1102	200-A-A
	215/40ZR17	XL	87W	28532497	7.5	7.0 - 8.5	23.9	8.7	861	7.4	6.3	7.9	20.4	50	1202	200-A-A
	215/45ZR17	SL	87W	28531437	7.0	7.0 - 8.0	24.6	8.3	871	8.0	6.3	7.9	22.9	51	1201	200-A-A
	225/45ZR17	XL	94W	28537258	7.5	7.0 - 8.5	25.0	8.9	822	8.3	6.3	7.9	25.0	50	1477	200-A-A
	235/40ZR17	SL	90W	28534447	8.5	8.0 - 9.5	24.4	9.4	836	8.7	6.3	7.9	23.8	51	1323	200-A-A
	245/45ZR17	XL	99W	28534124	8.0	7.5 - 9.0	25.6	9.6	806	9.1	6.3	7.9	27.2	50	1709	200-A-A
	255/40ZR17	SL	94W	28538003	9.0	8.5 - 10.0	25.0	10.3	825	9.4	6.3	7.9	26.6	51	1477	200-A-A
275/40ZR17	SL	98W	28535983	9.5	9.0 - 11.0	25.6	10.8	806	10.0	6.3	7.9	28.4	51	1653	200-A-A	

Wheel Dia.	Size	Extra Load	Load Index/Speed Rating	Item Number	Measuring Rim Width (in)	Approved Rim Width Range (in)	Overall Diameter (in)	Section Width (in)	Revolutions Per Mile	Tread Width (in)	Tread Depth (mm)	Tread Depth (/32")	Tire Weight (lbs.)	Max PSI (Cold)	Max Load (lbs.)	UTQG
<b>18"</b>	225/40ZR18	XL	92W	28539564	8.0	7.5 - 9.0	25.1	9.3	818	8.3	6.3	7.9	24.1	50	1389	200-A-A
	235/40ZR18	XL	95W	28537681	8.5	8.0 - 9.5	25.5	9.6	806	8.7	6.3	7.9	24.4	50	1521	200-A-A
	245/40ZR18	XL	97W	28533881	8.5	8.0 - 9.5	25.6	9.8	803	9.1	6.3	7.9	26.6	50	1609	200-A-A
	255/40ZR18	SL	95W	28532104	9.0	8.5 - 10.0	25.9	10.3	794	9.4	6.3	7.9	27.9	51	1521	200-A-A
	265/35ZR18	XL	97W	28538247	9.5	9.0 - 10.5	25.4	10.7	852	10.0	6.3	7.9	28.2	50	1609	200-A-A
	275/35ZR18	SL	95W	28537737	9.5	9.0 - 11.0	25.6	10.8	803	10.0	6.3	7.9	27.0	51	1521	200-A-A
	295/40ZR18	SL	103W	28535059	10.5	10.0 - 11.5	27.2	11.8	763	10.9	6.3	7.9	32.8	51	1929	200-A-A
	315/30ZR18	SL	98W	28533615	11.0	10.5 - 11.5	25.5	12.6	813	11.7	6.3	7.9	32.0	51	1653	200-A-A



# AZENIS FK450 A/S

UNCOMPROMISED ALL-SEASON ULTRA HIGH PERFORMANCE

The all-new **AZENIS FK450 All-Season** is specifically designed for today's premium sport coupes and sedans. Through an array of advanced technological features including Falken Tires' exclusive Tension Control Technology (TCT) process, engineers achieved an excellent balance of handling, high-speed stability and confident all-weather traction. Advanced tread-design simulation has allowed for slightly rounded sculpted-rib edges to aid in preventing rain groove wandering, enhance straight-line stability and optimize on-road feel. With 51 available sizes ranging from 16 to 20-inch and 68%\* Luxury Sport vehicle coverage, the FK450 A/S is the choice for drivers seeking dependable all-season ultra high performance, year round.

**AVAILABLE TIRE SIZES**  
51 SIZES

**AVAILABLE RIM SIZING**  
16" - 20"

**SPEED RATING**  
W • Y

**LIMITED TREAD LIFE WARRANTY**  
50,000 MILES / 80,000 km

**RIDE GUARANTEE**  
30 DAYS

## PERFORMANCE RATINGS†



**4D NANO DESIGN**  
features new compound advancements through biomass materials to help improve tread flexibility and adhesion while simultaneously reducing polymer heat generation.



**POPULAR FITMENTS:**  
ACURA TLX  
AUDI A4  
BMW 3-5 SERIES  
CHEVROLET CAMARO  
CADILLAC CTS  
FORD MUSTANG  
INFINITI Q50  
LEXUS IS  
LINCOLN MKZ  
MERCEDES C-E CLASS

## TIRE HIGHLIGHTS

- ASYMMETRIC RIB AND BLOCK HYBRID TYPE DESIGN**  
allows for quick vehicle reaction, maneuverability and on-road feel.
- TAPERED NOTCHED GROOVES**  
create break-off points for snow packed into tread surface.
- LONG SWEEPING TREAD GROOVES**  
clear water with minimal cavitation for great wet-driving performance.
- VERTICAL TREAD NOTCHES**  
help minimize any loss of traction when transitioning from straight-line driving to corners.

## SIZES AND SPECIFICATIONS

NEXT PAGE

\*Market Coverage based on 3rd Party 2015 Q1 U.S. Vehicle Registration Data.  
†Performance ratings are based on a scale of 1 to 5 with 5 being best. Ratings are in comparison to other Falken Tires products in the same category.

Product images are for illustrative purposes only. Tread design, technical information and tire construction subject to change without notice and may vary by size.

# AZENIS FK450 A/S

UNCOMPROMISED ALL-SEASON ULTRA HIGH PERFORMANCE

LIMITED TREAD LIFE WARRANTY: 50,000 MILES / 80,000 km

Wheel Dia.	Size	Extra Load	Load Index/Speed Rating	Item Number	Measuring Rim Width (in)	Approved Rim Width Range (in)	Overall Diameter (in)	Section Width (in)	Revolutions Per Mile	Tread Width (in)	Tread Depth (mm)	Tread Depth (/32")	Tire Weight (lbs.)	Max PSI (Cold)	Max Load (lbs.)	UTQG
16"	**195/55RF16	SL	87V	28172422	7.5	7.0 - 8.5	25.0	9.0	834	7.5	8.4	10.6	27.6	51	1356	400-A-A
	205/50ZR16	SL	87W	28173671	6.5	5.5 - 7.5	24.1	8.5	874	7.3	8.0	10.1	20.7	51	1201	500-A-A
	205/55ZR16	SL	91W	28173483	6.5	5.5 - 7.5	24.9	8.4	845	7.1	8.0	10.1	20.3	51	1356	500-A-A
	215/55ZR16	XL	97W	28173662	7.0	6.0 - 7.5	25.3	8.9	834	7.4	8.0	10.1	24.0	50	1609	500-A-A
	225/50ZR16	SL	92W	28173672	7.0	6.0 - 8.0	24.9	9.3	845	8.0	8.0	10.1	22.7	51	1389	500-A-A
	225/55ZR16	SL	95W	28173670	7.0	6.0 - 8.0	25.7	9.2	821	7.8	8.0	10.1	22.5	51	1521	500-A-A
17"	205/45ZR17	XL	88W	28173781	7.0	6.5 - 7.5	24.3	8.2	856	7.1	8.0	10.1	20.5	50	1235	500-A-A
	205/50ZR17	XL	93W	28173770	6.5	5.5 - 7.5	25.1	8.5	837	7.3	8.0	10.1	21.8	50	1433	500-A-A
	215/45ZR17	XL	91W	28173792	7.0	7.0 - 8.0	24.6	8.5	842	7.4	8.0	10.1	21.8	50	1356	500-A-A
	215/50ZR17	XL	95W	28173771	7.0	6.0 - 7.5	25.5	9.0	823	7.7	8.0	10.1	22.7	50	1521	500-A-A
	215/55ZR17	SL	94W	28173727	7.0	6.0 - 7.5	26.3	8.9	800	7.4	8.0	10.1	22.5	51	1477	500-A-A
	225/45ZR17	XL	94W	28173795	7.5	7.0 - 8.5	25.0	9.0	834	7.8	8.0	10.1	22.5	50	1477	500-A-A
	**225/45ZRF17	SL	91W	28173401	7.5	7.0 - 8.5	25.0	9.0	834	7.5	8.4	10.6	27.6	51	1356	400-A-A
	225/50ZR17	XL	98W	28173772	7.0	6.0 - 8.0	25.9	9.3	811	8.0	8.0	10.1	26.0	50	1653	500-A-A
	225/55ZR17	SL	97W	28173762	7.0	6.0 - 8.0	26.8	9.2	788	7.8	8.0	10.1	25.6	51	1609	500-A-A
	235/45ZR17	XL	97W	28173794	8.0	7.5 - 9.0	25.4	9.4	821	8.1	8.0	10.1	24.3	50	1609	500-A-A
	235/50ZR17	SL	96W	28173773	7.5	6.5 - 8.5	26.3	9.8	800	8.4	8.0	10.1	27.8	51	1565	500-A-A
	235/55ZR17	SL	99W	28173725	7.5	6.5 - 8.5	27.2	9.6	778	8.1	8.0	10.1	26.7	51	1709	500-A-A
	245/40ZR17	SL	91W	28173785	8.5	8.0 - 9.5	24.7	9.9	842	8.7	8.0	10.1	24.3	51	1356	500-A-A
	245/45ZR17	XL	99Y	28175784	8.0	7.5 - 9.0	25.7	9.7	813	8.5	8.0	10.1	24.9	50	1709	500-A-A
	245/50ZR17	SL	99W	28173776	7.5	7.0 - 8.5	26.7	10.1	790	8.7	8.0	10.1	28.4	51	1709	500-A-A
255/40ZR17	SL	94Y	28175796	9.0	8.5 - 10	25.0	10.4	832	9.1	8.0	10.1	25.6	51	1477	500-A-A	

\*\*Runflat size

LIMITED TREAD LIFE WARRANTY: 50,000 MILES / 80,000 km

Wheel Dia.	Size	Extra Load	Load Index/Speed Rating	Item Number	Measuring Rim Width (in)	Approved Rim Width Range (in)	Overall Diameter (in)	Section Width (in)	Revolutions Per Mile	Tread Width (in)	Tread Depth (mm)	Tread Depth (/32")	Tire Weight (lbs.)	Max PSI (Cold)	Max Load (lbs.)	UTQG
18"	215/45ZR18	XL	93W	28175899	7.0	7.0 - 8.0	25.6	8.5	811	7.4	8.0	10.1	22.9	50	1433	500-A-A
	225/40ZR18	XL	92Y	28175892	8.0	7.5 - 9.0	25.1	9.2	826	8.0	8.0	10.1	22.9	50	1389	500-A-A
	225/45ZR18	XL	95Y	28175824	7.5	7.0 - 8.5	25.9	9.0	803	7.8	8.0	10.1	23.6	50	1521	500-A-A
	225/50ZR18	SL	95W	28173805	7.0	6.0 - 8.0	26.9	9.3	781	8.0	8.0	10.1	27.3	51	1521	500-A-A
	235/40ZR18	XL	95Y	28175893	8.5	8.0 - 9.5	25.4	9.6	818	8.3	8.0	10.1	24.5	50	1521	500-A-A
	235/45ZR18	XL	98W	28173895	8.0	7.5 - 9.0	26.3	9.4	790	8.1	8.0	10.1	25.6	50	1653	500-A-A
	235/50ZR18	SL	97W	28173825	7.5	6.5 - 8.5	27.3	9.8	771	8.4	8.0	10.1	27.3	51	1609	500-A-A
	235/55ZR18	SL	100W	28173817	7.5	6.5 - 8.5	28.1	9.6	749	8.1	8.0	10.1	28.0	51	1764	500-A-A
	245/40ZR18	XL	97Y	28175894	8.5	8.0 - 9.5	25.7	9.9	808	8.7	8.0	10.1	25.6	50	1609	500-A-A
	245/45ZR18	XL	100Y	28175865	8.0	7.5 - 9.0	26.7	9.7	783	8.5	8.0	10.1	26.7	50	1764	500-A-A
	245/50ZR18	SL	100W	28173820	7.5	7.0 - 8.5	27.7	10.1	760	8.7	8.0	10.1	29.1	51	1764	500-A-A
	245/55ZR18	SL	103W	28173863	7.5	7.0 - 8.5	28.6	10.0	738	8.4	8.0	10.1	30.4	51	1929	500-A-A
	255/35ZR18	XL	94Y	28175896	9.0	8.5 - 10.0	25.0	10.2	832	9.1	8.0	10.1	25.6	50	1477	500-A-A
	255/40ZR18	XL	99Y	28175844	9.0	8.5 - 10.0	26.0	10.4	800	9.1	8.0	10.1	27.8	50	1709	500-A-A
	265/35ZR18	XL	97Y	28175806	9.5	9.0 - 10.5	25.3	10.7	821	9.5	7.8	9.8	27.8	50	1609	500-A-A
19"	225/45ZR19	XL	96Y	28175937	7.5	7.0 - 8.5	27.0	9.0	771	7.8	8.0	10.1	24.9	50	1565	500-A-A
	235/40ZR19	XL	96W	28173495	8.5	8.0 - 9.5	26.4	9.6	786	8.3	8.0	10.1	26.5	50	1565	500-A-A
	245/40ZR19	XL	98Y	28175974	8.5	8.0 - 9.5	26.7	9.9	776	8.7	8.0	10.1	27.1	50	1653	500-A-A
	**245/40ZRF19	XL	98Y	28175165	8.5	8.0 - 9.5	26.7	10.0	774	8.5	8.2	10.3	31.5	50	1653	400-A-A
	245/45ZR19	XL	102Y	28175904	8.0	7.5 - 9.0	27.7	9.7	753	8.5	8.0	10.1	28.7	50	1874	500-A-A
	255/35ZR19	XL	96Y	28175973	9.0	8.5 - 10.0	26.0	10.2	798	9.1	8.0	10.1	26.2	50	1565	500-A-A
	255/40ZR19	XL	100Y	28175996	9.0	8.5 - 10.0	27.0	10.4	769	9.1	8.0	10.1	27.8	50	1764	500-A-A
	255/45ZR19	XL	104Y	28175997	8.5	8.0 - 9.5	28.1	10.2	742	8.8	8.0	10.1	30.0	50	1984	500-A-A
	275/35ZR19	XL	100Y	28175998	9.5	9.0 - 11.0	26.6	10.9	783	9.8	7.8	9.8	29.8	50	1764	500-A-A
	285/35ZR19	SL	99Y	28175989	10.0	9.5 - 11.0	26.9	11.4	771	10.2	7.8	9.8	31.3	51	1709	500-A-A
20"	245/35ZR20	XL	95Y	28175985	8.5	8.0 - 9.5	26.8	9.8	774	8.8	8.0	10.1	26.9	50	1521	500-A-A
	245/45ZR20	XL	103Y	28175023	8.0	7.5 - 9.0	28.7	9.7	725	8.5	8.0	10.1	28.9	50	1929	500-A-A
	255/35ZR20	XL	97Y	28175001	9.0	8.5 - 10.0	27.0	10.2	767	9.1	8.0	10.1	28.4	50	1609	500-A-A
	255/45ZR20	SL	101Y	28175013	8.5	8.0 - 9.5	29.1	10.2	717	8.8	8.0	10.1	29.8	51	1819	500-A-A

\*\*Runflat size





# ZIEX ZE950 A/S

## TRUE ALL-SEASON HIGH PERFORMANCE

The **ZIEX ZE950 All-Season** incorporates the latest in technology and design from Falken to create an excellent choice for drivers of today's sedans, sports cars and crossover vehicles where mileage, all-season and high-performance handling are a priority. Using the Falken-exclusive Dynamic Range Technology (DRT) in the all-new silica tread compound and asymmetric tread design, the ZE950 A/S provides optimum levels of dry, wet, ice and snow grip as well as delivering some of the longest mileage of any Falken high-performance tire. With over 100 sizes from 15 to 20-inch and speed ratings of H, V, and W, the ZIEX ZE950 A/S covers a wide range of fitments, from family sedans to crossover vehicles.

**AVAILABLE TIRE SIZES**  
103 SIZES

**AVAILABLE RIM SIZING**  
15" – 20"

**SPEED RATING**  
H • V • W

**LIMITED TREAD LIFE WARRANTY**  
65,000 MILES (H,V) / 104,000 km (H,V)  
45,000 MILES (W) / 72,000 km (W)

**RATING**  
M+S RATED

**RIDE GUARANTEE**  
30 DAYS

### PERFORMANCE RATINGS\*



### DYNAMIC RANGE TECHNOLOGY

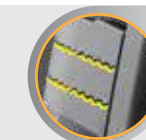
incorporates a Falken-exclusive silica tread compound that allows the rubber to remain pliable at low temperatures, increasing grip in wet, snow and icy conditions. During dry conditions, as the rubber heats up, chemical bonds remain strong, allowing for great dry handling and exceptional treadwear performance.



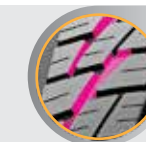
### POPULAR FITMENTS:

- ACURA TL
- AUDI A4
- CHEVROLET MALIBU
- FORD FOCUS
- FORD TAURUS X
- HONDA ACCORD
- HYUNDAI SONATA
- INFINITI Q SERIES
- KIA OPTIMA
- NISSAN ALTIMA
- TOYOTA CAMRY
- VOLKSWAGEN JETTA

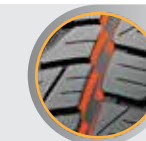
### TIRE HIGHLIGHTS



**3D CANYON SIPE TECHNOLOGY**  
increases edges for ice braking and interlocks under load for better handling and improved wear.



**WIDE ANGLED TREAD SLOT**  
provides additional snow grip by allowing snow to be packed into the center of the tire.



**SCULPTURED GROOVE WALL**  
provides better snow grip and eliminates rain groove wandering.



**WIDE CIRCUMFERENTIAL GROOVES**  
effectively evacuate water and significantly enhance hydroplaning resistance for outstanding wet handling.

### SIZES AND SPECIFICATIONS

NEXT PAGE

\*Performance ratings are based on a scale of 1 to 5 with 5 being best. Ratings are in comparison to other Falken Tires products in the same category.

Product images are for illustrative purposes only. Tread design, technical information and tire construction subject to change without notice and may vary by size.

# ZIEX ZE950 A/S

TRUE ALL-SEASON HIGH PERFORMANCE

LIMITED TREAD LIFE WARRANTY: 65,000 MILES (H,V) / 104,000 km (H,V) • 45,000 MILES (W) / 72,000 km (W)

Wheel Dia.	Size	Extra Load	Load Index/Speed Rating	Item Number	Measuring Rim Width (in)	Approved Rim Width Range (in)	Overall Diameter (in)	Section Width (in)	Revolutions Per Mile	Tread Width (in)	Tread Depth (mm)	Tread Depth (32")	Tire Weight (lbs.)	Max PSI (Cold)	Max Load (lbs.)	UTQG	
15"	175/65R15	SL	84H	28951563	5.0	5.0 - 6.0	24.0	7.0	880	5.6	8.0	10.1	17	51	1102	600-A-A	
	185/60R15	SL	84H	28951516	5.5	5.0 - 6.5	23.8	7.4	889	6.0	8.1	10.2	18	51	1102	600-A-A	
	185/65R15	SL	88H	28951542	5.5	5.0 - 6.5	24.4	7.4	865	5.9	8.1	10.2	18	51	1235	600-A-A	
	195/50R15	SL	82H	28951571	6.0	5.5 - 7.0	22.8	7.9	925	7.0	8.0	10.1	18	51	1047	600-A-A	
	195/55R15	SL	85V	28952561	6.0	5.5 - 7.0	23.4	7.9	898	6.7	8.0	10.1	19	51	1135	600-A-A	
	195/60R15	SL	88H	28951551	6.0	5.5 - 7.0	24.3	7.9	871	6.4	8.2	10.3	20	51	1235	600-A-A	
	195/65R15	SL	91H	28951543	6.0	5.5 - 7.0	25.0	7.9	848	6.2	8.2	10.3	20	51	1356	600-A-A	
	205/60R15	SL	91H	28951552	6.0	5.5 - 7.5	24.7	8.2	856	6.7	8.2	10.3	20	51	1356	600-A-A	
	205/65R15	XL	99W	28953544	6.0	5.5 - 7.5	25.5	8.2	832	6.5	8.0	9.8	22	50	1709	500-A-A	
	205/65R15	XL	99H	28951544	6.0	5.5 - 7.5	25.5	8.2	832	6.5	8.0	10.1	23	50	1709	600-A-A	
	215/60R15	SL	94H	28951553	6.5	6.0 - 7.5	25.2	8.7	840	7.0	8.3	10.5	23	51	1477	600-A-A	
	215/65R15	SL	96H	28951545	6.5	6.0 - 7.5	26.0	8.7	816	6.9	8.3	10.5	22	51	1565	600-A-A	
16"	185/55R16	SL	83H	28951677	6.0	5.0 - 6.5	24.0	7.6	874	6.4	7.9	10.0	19	51	1074	600-A-A	
	195/50R16	SL	84V	28952660	6.0	5.5 - 7.0	23.7	7.9	883	7.0	8.0	10.1	19	51	1102	600-A-A	
	195/55R16	SL	87V	28952615	6.0	5.5 - 7.0	24.4	7.9	862	6.7	8.0	10.1	20	51	1201	600-A-A	
	205/45R16	XL	87V	28952690	7.0	6.5 - 7.5	23.3	8.1	895	7.1	8.1	10.2	20	50	1201	600-A-A	
	205/50R16	SL	87V	28952671	6.5	5.5 - 7.5	24.1	8.4	871	7.3	8.1	10.2	21	51	1201	600-A-A	
	205/55R16	XL	94W	28953483	6.5	5.5 - 7.5	24.9	8.4	845	7.1	7.6	9.6	21	50	1477	500-A-A	
	205/55R16	XL	94H	28951661	6.5	5.5 - 7.5	24.9	8.4	845	7.1	7.6	9.6	21	50	1477	600-A-A	
	205/60R16	SL	92V	28952652	6.0	5.5 - 7.5	25.7	8.2	821	6.7	8.2	10.3	22	51	1389	600-A-A	
	205/65R16	SL	95V	28952626	6.0	5.5 - 7.5	26.5	8.2	800	6.5	8.3	10.5	22	51	1521	600-A-A	
	215/55R16	XL	97V	28952662	7.0	6.0 - 7.5	25.3	8.9	834	7.4	8.2	10.3	24	50	1609	600-A-A	
	215/60R16	SL	95H	28951479	6.5	6.0 - 7.5	26.2	8.7	808	7.0	8.6	10.8	24	51	1521	600-A-A	
	215/60R16	XL	99V	28952479	6.5	6.0 - 7.5	26.2	8.7	808	7.0	8.6	10.8	24	50	1709	600-A-A	
	215/65R16	SL	98H	28951681	6.5	6.0 - 7.5	27.0	8.7	786	6.9	8.3	10.5	23	51	1653	600-A-A	
	225/50R16	XL	96V	28952672	7.0	6.0 - 8.0	24.9	9.2	845	8.0	8.3	10.5	25	50	1565	600-A-A	
	225/55R16	SL	95V	28952670	7.0	6.0 - 8.0	25.7	9.2	821	7.8	8.3	10.5	24	51	1521	600-A-A	
	225/60R16	SL	98V	28952480	6.5	6.0 - 8.0	26.7	9.0	795	7.3	8.3	10.5	26	51	1653	600-A-A	
	225/65R16	SL	100H	28951673	6.5	6.0 - 8.0	27.5	9.0	771	7.2	8.3	10.5	27	51	1764	600-A-A	
	235/60R16	SL	100W	28953655	7.0	6.5 - 8.5	27.1	9.4	783	7.7	7.8	9.8	29	51	1764	500-A-A	
	235/65R16	SL	103H	28951629	7.0	6.5 - 8.5	28.0	9.4	760	7.5	8.3	10.5	27	51	1929	600-A-A	
	245/50R16	SL	97H	28951674	7.5	7.0 - 8.5	25.7	10.0	821	8.7	8.3	10.5	26	51	1609	600-A-A	
	17"	205/40R17	XL	84W	28953740	7.5	7.0 - 8.0	23.5	8.3	886	7.2	7.6	9.6	19	50	1102	500-A-A
		205/45R17	XL	88W	28953781	7.0	6.5 - 7.5	24.3	8.1	856	7.1	7.6	9.6	20	50	1235	500-A-A
		205/50R17	XL	93W	28953770	6.5	5.5 - 7.5	25.1	8.4	837	7.3	7.6	9.6	23	50	1433	500-A-A
		215/45R17	XL	91W	28953792	7.0	7.0 - 8.0	24.6	8.4	842	7.4	7.7	9.7	22	50	1356	500-A-A
215/50R17		SL	91W	28953771	7.0	6.0 - 7.5	25.5	8.9	823	7.7	7.7	9.7	23	51	1356	500-A-A	
215/55R17		SL	94W	28953727	7.0	6.0 - 7.5	26.3	8.9	800	7.4	7.7	9.7	24	51	1477	500-A-A	
215/55R17		SL	94V	28952727	7.0	6.0 - 7.5	26.3	8.9	800	7.4	7.7	9.7	23	51	1477	600-A-A	
215/60R17		SL	96H	28951729	6.5	6.0 - 7.5	27.2	8.7	776	7.0	8.3	10.5	25	51	1565	600-A-A	
215/65R17		SL	99H	28951782	6.5	6.0 - 7.5	28.0	8.7	755	6.9	8.3	10.5	26	51	1709	600-A-A	
225/45R17		XL	94W	28953795	7.5	7.0 - 8.5	25.0	8.9	834	7.8	7.8	9.8	23	50	1477	500-A-A	
225/50R17		SL	94W	28953772	7.0	6.0 - 8.0	25.9	9.2	811	8.0	7.8	9.8	24	51	1477	500-A-A	
225/55R17		XL	101W	28953762	7.0	6.0 - 8.0	26.8	9.2	788	7.8	7.8	9.8	27	50	1819	500-A-A	
225/60R17		SL	99V	28952728	6.5	6.0 - 8.0	27.7	9.0	764	7.3	8.3	10.5	26	51	1709	600-A-A	
225/65R17		SL	102H	28951775	6.5	6.0 - 8.0	28.5	9.0	742	7.2	8.3	10.5	28	51	1874	600-A-A	
235/45R17		SL	94W	28953794	8.0	7.5 - 9.0	25.4	9.3	821	8.1	7.8	9.8	24	51	1477	500-A-A	
235/50R17		SL	96W	28953773	7.5	6.5 - 8.5	26.3	9.6	800	8.4	7.8	9.8	26	51	1565	500-A-A	
235/55R17		SL	99W	28953725	7.5	6.5 - 8.5	27.2	9.6	778	8.1	7.8	9.8	27	51	1709	500-A-A	
235/60R17		SL	102H	28951717	7.0	6.5 - 8.5	28.1	9.4	751	7.7	8.3	10.5	31	51	1874	600-A-A	
235/65R17		XL	108V	28952790	7.0	6.5 - 8.5	29.1	9.4	732	7.5	8.3	10.5	32	50	2205	600-A-A	
245/40R17		XL	95W	28953785	8.5	8.0 - 9.5	24.7	9.8	842	8.7	7.8	9.8	24	50	1521	500-A-A	
245/45R17		XL	99W	28953784	8.0	7.5 - 9.0	25.7	9.6	813	8.5	7.8	9.8	26	50	1709	500-A-A	
245/50R17		SL	99W	28953776	7.5	7.0 - 8.5	26.7	10.0	790	8.7	7.8	9.8	28	51	1709	500-A-A	
255/40R17		SL	94W	28953796	9.0	8.5 - 10.0	25.0	10.2	832	9.0	7.8	9.8	25	51	1477	500-A-A	
265/60R17		SL	108V	28952012	8.0	7.5 - 9.5	29.6	10.7	719	8.7	8.3	10.5	35	51	2205	600-A-A	

LIMITED TREAD LIFE WARRANTY: 65,000 MILES (H,V) / 104,000 km (H,V) • 45,000 MILES (W) / 72,000 km (W)

Wheel Dia.	Size	Extra Load	Load Index/Speed Rating	Item Number	Measuring Rim Width (in)	Approved Rim Width Range (in)	Overall Diameter (in)	Section Width (in)	Revolutions Per Mile	Tread Width (in)	Tread Depth (mm)	Tread Depth (32")	Tire Weight (lbs.)	Max PSI (Cold)	Max Load (lbs.)	UTQG
18"	215/35R18	XL	84W	28953882	7.5	7.0 - 8.5	23.9	8.6	862	7.7	7.8	9.8	21	50	1102	500-A-A
	215/40R18	XL	89W	28953891	7.5	7.0 - 8.5	24.8	8.6	837	7.6	7.7	9.7	21	50	1279	500-A-A
	215/45R18	XL	93W	28953899	7.0	7.0 - 8.0	25.6	8.4	811	7.4	7.7	9.7	23	50	1433	500-A-A
	215/55R18	SL	95H	28951900	7.0	6.0 - 7.5	27.3	8.9	771	7.4	8.2	10.3	24	51	1521	600-A-A
	225/40R18	XL	92W	28953892	8.0	7.5 - 9.0	25.1	9.1	826	8.0	7.8	9.8	22	50	1389	500-A-A
	225/45R18	XL	95W	28953824	7.5	7.0 - 8.5	25.9	8.9	803	7.8	7.8	9.8	24	50	1521	500-A-A
	225/50R18	SL	95W	28953805	7.0	6.0 - 8.0	26.9	9.2	781	8.0	7.8	9.8	26	51	1521	500-A-A
	225/55R18	SL	98V	28952889	7.0	6.0 - 8.0	27.8	9.2	758	7.8	8.3	10.5	27	51	1653	600-A-A
	225/60R18	SL	100V	28952826	6.5	6.0 - 8.0	28.7	9.0	738	7.3	8.3	10.5	28	51	1764	600-A-A
	235/40R18	XL	95W	28953893	8.5	8.0 - 9.5	25.4	9.5	818	8.3	7.8	9.8	23	50	1521	500-A-A
	235/45R18	SL	94W	28953895	8.0	7.5 - 9.0	26.3	9.3	790	8.1	7.8	9.8	25	51	1477	500-A-A
	235/50R18	XL	101W	28953825	7.5	6.5 - 8.5	27.3	9.6	771	8.4	7.8	9.8	30	50	1819	500-A-A
	235/55R18	XL	104V	28952817	7.5	6.5 - 8.5	28.1	9.6	749	8.1	8.3	10.5	31	50	1984	600-A-A
	235/60R18	XL	107V	28952816	7.0	6.5 - 8.5	29.1	9.4	725	7.7	8.3	10.5	34	50	2149	600-A-A
	235/65R18	SL	106H	28951815	7.0	6.5 - 8.5	30.0	9.4	705	7.5	8.3	10.5	34	51	2094	600-A-A
	245/40R18	XL	97W	28953894	8.5	8.0 - 9.5	25.7	9.8	808	8.7	7.8	9.8	25	50	1609	500-A-A
	245/45R18	XL	100W	28953865	8.0	7.5 - 9.0	26.7	9.6	783	8.5	7.8	9.8	26	50	1764	500-A-A
	245/55R18	SL	103W	28953863	7.5	7.0 - 8.5	28.6	10.0	738	8.5	7.8	9.8	32	51	1929	500-A-A
	245/60R18	SL	105H	28951811	7.0	7.0 - 8.5	29.6	9.8	713	8.0	8.3	10.5	34	51	2039	600-A-A
	255/35R18	XL	94W	28953896	9.0	8.5 - 10.0	25.0	10.2	832	9.2	7.8	10.0	25	50	1477	500-A-A
	255/40R18	XL	99W	28953844	9.0	8.5 - 10	26.0	10.2	800	9.0	7.8	9.8	28	50	1709	500-A-A
	255/45R18	XL	103W	28953866	8.5	8.0 - 9.5	27									



# SINCERA SN250 A/S

## LONG LASTING ALL-SEASON PERFORMANCE TOURING

Specifically designed to provide class-leading durability, all-season performance and ride comfort, the new **SINCERA SN250 All-Season** truly delivers. Using Falken's proprietary Dynamic Range Technology (DRT), the SN250 A/S ensures maximum grip at a wider range of operating temperatures for exceptional dry and wet traction. Strategically placed tread blocks balance harmonics to reduce tire noise for an impressively quiet ride. Featuring an 80,000/75,000 limited tread life warranty, 63 sizes and covering a massive 91%\* of non-luxury sub-compact through full-size vehicles, the SN250 A/S meets and exceeds all critical touring tire expectations and more.

**AVAILABLE TIRE SIZES**  
63 SIZES

**AVAILABLE RIM SIZING**  
14" – 18"

**SPEED RATING**  
T • H • V

**LIMITED TREAD LIFE WARRANTY**  
80,000 MILES (T) / 128,000 km (T)  
75,000 MILES (H,V) / 121,000 km (H,V)

**RIDE GUARANTEE**  
30 DAYS

### PERFORMANCE RATINGS†



### TENSION CONTROL TECHNOLOGY

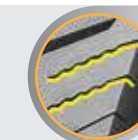
is a proprietary casing mold shape that provides a more flexible middle sidewall area to absorb shock while providing enhanced handling capability via the rigid outside shoulder tread and bead area of the sidewall.



#### POPULAR FITMENTS:

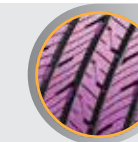
- FORD FOCUS
- FORD FUSION
- HONDA ACCORD
- HYUNDAI ELANTRA
- HYUNDAI SONATA
- NISSAN ALTIMA
- TOYOTA CAMRY
- TOYOTA PRIUS
- VOLKSWAGEN JETTA
- VOLKSWAGEN PASSAT

### TIRE HIGHLIGHTS



#### 3D CANYON SIPE TECHNOLOGY

increases edges for enhanced ice braking and all-weather handling while the design's interlocking characteristics form a more solid tread block under load for excellent dry weather performance.



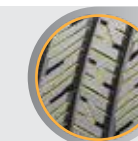
#### SYMMETRICAL RIB DESIGN

created to optimize even wear.



#### ANGLED TREAD GROOVES

on every tread rib add void for packed snow.



#### HIGH SIPE DENSITY

for enhanced all-season drivability.

### SIZES AND SPECIFICATIONS

NEXT PAGE

\*Market Coverage based on 3rd Party 2016 U.S. Vehicle Registration Data.

†Performance ratings are based on a scale of 1 to 5 with 5 being best. Ratings are in comparison to other Falken Tires products in the same category.

Product images are for illustrative purposes only. Tread design, technical information and tire construction subject to change without notice and may vary by size.

# SINCERA SN250 A/S

LONG LASTING ALL-SEASON PERFORMANCE TOURING

LIMITED TREAD LIFE WARRANTY: 80,000 MILES (T) / 128,000 km (T) • 75,000 MILES (H,V) / 121,000 km (H,V)

Wheel Dia.	Size	Extra Load	Load Index/Speed Rating	Item Number	Measuring Rim Width (in)	Approved Rim Width Range (in)	Overall Diameter (in)	Section Width (in)	Revolutions Per Mile	Tread Width (in)	Tread Depth (mm)	Tread Depth (/32")	Tire Weight (lbs.)	Max PSI (Cold)	Max Load (lbs.)	UTQG
14"	175/65R14	SL	82T	28294442	5.0	5.0 - 6.0	23.1	7.0	902	5.6	8.4	11.0	15.9	51	1047	720-A-B
	185/60R14	SL	82H	28291451	5.5	5.0 - 6.5	22.9	7.5	921	6.1	8.5	11.0	16.8	51	1047	720-A-A
	185/65R14	SL	86T	28294443	5.5	5.0 - 6.5	23.5	7.5	898	5.9	8.5	11.0	16.8	51	1168	720-A-B
	185/70R14	SL	88T	28294473	5.5	4.5 - 6.0	24.3	7.5	871	5.8	8.5	11.0	17.9	51	1235	720-A-B
	195/70R14	SL	91T	28294475	6.0	5.0 - 6.5	24.9	8.0	854	6.1	8.5	11.0	19.2	51	1356	720-A-B
15"	175/65R15	SL	84T	28294563	5.0	5.0 - 6.0	24.1	7.0	877	5.6	8.4	11.0	17.0	51	1102	720-A-B
	185/55R15	SL	82V	28292575	6.0	5.0 - 6.5	23.1	7.6	915	6.4	8.5	11.0	16.8	51	1047	720-A-A
	185/60R15	SL	84T	28294516	5.5	5.0 - 6.5	23.9	7.5	883	6.1	8.5	11.0	17.2	51	1102	720-A-B
	185/65R15	SL	88T	28294542	5.5	5.0 - 6.5	24.5	7.5	862	5.9	8.5	11.0	18.3	51	1235	720-A-B
	195/55R15	SL	85V	28298331	6.0	5.5 - 7.0	23.5	7.9	898	6.7	8.6	11.0	23.6	51	1135	720-A-A
	195/60R15	SL	88T	28294551	6.0	5.5 - 7.0	24.3	8.0	868	6.5	8.5	11.0	18.3	51	1235	720-A-B
	195/65R15	SL	91T	28294543	6.0	5.5 - 7.0	25.1	8.0	845	6.2	8.5	11.0	19.0	51	1356	720-A-B
	195/65R15	SL	91H	28291543	6.0	5.5 - 7.0	25.1	8.0	845	6.2	8.5	11.0	19.0	51	1356	720-A-A
	205/60R15	SL	91T	28294552	6.0	5.5 - 7.5	24.8	8.3	854	6.8	8.6	11.0	20.5	51	1356	720-A-B
	205/65R15	XL	99T	28294544	6.0	5.5 - 7.5	25.6	8.3	832	6.5	8.6	11.0	21.4	50	1709	720-A-B
	205/70R15	SL	96T	28294476	6.0	5.0 - 7.0	26.4	8.3	805	6.4	8.6	11.0	21.6	51	1565	720-A-B
	215/60R15	SL	94T	28294553	6.5	6.0 - 7.5	25.3	8.8	837	7.1	8.6	11.0	20.7	51	1477	720-A-B
	215/65R15	SL	96T	28294545	6.5	6.0 - 7.5	26.1	8.8	813	6.9	8.6	11.0	23.8	51	1565	720-A-B
	215/70R15	SL	98T	28294477	6.5	5.5 - 7.0	27.0	8.8	790	6.7	8.6	11.0	24.7	51	1653	720-A-B
	225/70R15	SL	100T	28294478	6.5	6.0 - 7.5	27.5	9.1	776	7.0	8.6	11.0	26.2	51	1764	720-A-B
	235/75R15	SL	105T	28294108	6.5	6.0 - 8.0	28.9	9.3	740	7.1	8.7	11.0	29.5	51	2039	720-A-B

LIMITED TREAD LIFE WARRANTY: 80,000 MILES (T) / 128,000 km (T) • 75,000 MILES (H,V) / 121,000 km (H,V)

Wheel Dia.	Size	Extra Load	Load Index/Speed Rating	Item Number	Measuring Rim Width (in)	Approved Rim Width Range (in)	Overall Diameter (in)	Section Width (in)	Revolutions Per Mile	Tread Width (in)	Tread Depth (mm)	Tread Depth (/32")	Tire Weight (lbs.)	Max PSI (Cold)	Max Load (lbs.)	UTQG
16"	185/55R16	SL	83T	28294677	6.0	5.0 - 6.5	24.1	7.6	874	6.4	8.5	11.0	19.2	51	1074	720-A-B
	195/55R16	SL	87T	28294615	6.0	5.5 - 7.0	24.5	7.9	860	6.7	8.5	11.0	20.1	51	1201	720-A-B
	205/50R16	SL	87T	28294671	6.5	5.5 - 7.5	24.1	8.4	874	7.3	8.6	11.0	20.3	51	1201	720-A-B
	205/55R16	SL	91H	28291483	6.5	5.5 - 7.5	24.9	8.4	845	7.1	8.6	11.0	21.2	51	1356	720-A-A
	205/55R16	SL	91T	28294483	6.5	5.5 - 7.5	24.9	8.4	845	7.1	8.6	11.0	21.2	51	1356	720-A-B
	205/60R16	SL	92H	28291652	6.0	5.5 - 7.5	25.8	8.3	818	6.8	8.6	11.0	20.9	51	1389	720-A-A
	205/65R16	SL	95H	28291626	6.0	5.5 - 7.5	26.5	8.3	798	6.5	8.6	11.0	22.0	51	1521	720-A-A
	215/55R16	XL	97H	28291662	7.0	6.0 - 7.5	25.3	8.9	834	7.4	8.6	11.0	24.7	50	1609	720-A-A
	215/60R16	SL	95T	28294479	6.5	6.0 - 7.5	26.3	8.8	805	7.1	8.6	11.0	22.0	51	1521	720-A-B
	215/60R16	SL	95V	28291479	6.5	6.0 - 7.5	26.3	8.8	805	7.1	8.6	11.0	22.3	51	1521	720-A-A
	215/65R16	SL	98T	28294681	6.5	6.0 - 7.5	27.1	8.8	783	6.9	8.6	11.0	24.7	51	1653	720-A-B
	215/70R16	SL	100T	28294100	6.5	5.5 - 7.0	28.0	8.8	760	6.7	8.6	11.0	25.8	51	1764	720-A-B
	225/55R16	SL	95V	28296913	7.0	6.0 - 8.0	25.8	9.2	821	7.8	8.7	11.0	25.8	51	1521	720-A-A
	225/60R16	SL	98T	28294480	6.5	6.0 - 8.0	26.7	9.1	793	7.4	8.6	11.0	26.2	51	1653	720-A-B
	225/65R16	SL	100T	28294673	6.5	6.0 - 8.0	27.6	9.1	769	7.2	8.6	11.0	27.8	51	1764	720-A-B
	225/70R16	SL	103T	28294104	6.5	6.0 - 7.5	28.5	9.1	747	7.0	8.6	11.0	26.9	51	1929	720-A-B
	235/60R16	SL	100H	28291655	7.0	6.5 - 8.5	27.2	9.5	781	7.8	8.7	11.0	27.1	51	1764	720-A-A
	235/65R16	SL	103T	28294629	7.0	6.5 - 8.5	28.1	9.5	758	7.5	8.7	11.0	28.0	51	1929	720-A-B
235/70R16	SL	106T	28294109	7.0	6.0 - 8.0	29.1	9.5	734	7.4	8.6	11.0	29.5	51	2094	720-A-B	
17"	205/50R17	XL	93V	28294959	6.5	5.5 - 7.5	25.1	8.4	837	7.3	8.7	11.0	22.7	50	1433	720-A-A
	215/45R17	SL	87V	28296783	7.0	7.0 - 8.0	24.7	8.4	842	7.4	8.5	11.0	25.1	51	1201	720-A-A
	215/50R17	XL	95V	28292771	7.0	6.0 - 7.5	25.5	8.9	834	7.7	8.6	11.0	23.8	50	1521	720-A-A
	215/55R17	SL	94V	28292727	7.0	6.0 - 7.5	26.3	8.9	800	7.4	8.6	11.0	22.7	51	1477	720-A-A
	215/55R17	SL	94T	28294727	7.0	6.0 - 7.5	26.3	8.9	800	7.4	8.6	11.0	22.7	51	1477	720-A-B
	215/60R17	SL	96T	28294729	6.5	6.0 - 7.5	27.3	8.8	774	7.1	8.6	11.0	24.7	51	1565	720-A-B
	215/65R17	SL	99T	28294782	6.5	6.0 - 7.5	28.1	8.8	753	6.9	8.6	11.0	25.8	51	1709	720-A-B
	225/45R17	XL	94V	28295334	7.5	7.0 - 8.5	25.0	8.9	834	7.8	8.5	11.0	25.4	50	1477	720-A-A
	225/50R17	XL	98V	28292772	7.0	6.0 - 8.0	25.9	9.2	811	8.0	8.6	11.0	25.4	50	1653	720-A-A
	225/55R17	SL	97V	28292762	7.0	6.0 - 8.0	26.8	9.2	786	7.8	8.6	11.0	25.6	51	1609	720-A-A
	225/60R17	SL	99T	28294728	6.5	6.0 - 8.0	27.8	9.1	762	7.4	8.6	11.0	26.5	51	1709	720-A-B
	225/65R17	SL	102T	28294775	6.5	6.0 - 8.0	28.6	9.1	740	7.2	8.6	11.0	28.0	51	1874	720-A-B
18"	235/55R17	SL	99T	28294725	7.5	6.5 - 8.5	27.2	9.6	776	8.1	8.7	11.0	27.1	51	1709	720-A-B
	235/60R17	SL	102T	28294717	7.0	6.5 - 8.5	28.2	9.5	751	7.8	8.7	11.0	28.7	51	1874	720-A-B
	235/65R17	SL	104T	28294790	7.0	6.5 - 8.5	29.1	9.5	730	7.5	8.7	11.0	29.8	51	1984	720-A-B
	215/55R18	SL	95T	28294900	7.0	6.0 - 7.5	27.3	8.9	769	7.4	8.6	11.0	24.3	51	1521	720-A-B
	225/45R18	XL	95V	28294339	7.5	7.0 - 8.5	26.0	8.9	800	7.8	8.5	11.0	26.5	50	1521	720-A-A
	225/50R18	SL	95T	28294805	7.0	6.0 - 8.0	26.9	9.2	781	8.0	8.6	11.0	26.7	51	1521	720-A-B
	225/55R18	SL	98T	28294889	7.0	6.0 - 8.0	27.8	9.2	758	7.8	8.6	11.0	27.1	51	1653	720-A-B
	225/60R18	SL	100H	28291826	6.5	6.0 - 8.0	28.7	9.1	736	7.4	8.6	11.0	28.9	51	1764	720-A-A
235/45R18	SL	94V	28295652	8.0	7.5 - 9.0	26.4	9.3	788	8.1	8.6	11.0	26.9	51	1477	720-A-A	
235/50R18	SL	97V	28299880	7.5	6.5 - 8.5	27.3	9.6	769	8.4	8.7	11.0	27.8	51	1609	720-A-A	
235/55R18	SL	100V	28295850	7.5	6.5 - 8.5	28.2	9.6	749	8.1	8.8	11.0	28.4	51	1764	720-A-A	

Product images are for illustrative purposes only. Tread design, technical information and tire construction subject to change without notice and may vary by size.



# ESPIA EPZ II

## CONFIDENT WINTER TRACTION

The **ESPIA EPZ II** ensures driving confidence in the harshest winter conditions. Using the latest technology in tread design, compound and construction, the EPZ II is an excellent blend of winter performance and longer treadwear. The EPZ II's non-directional tread design allows rotation in all directions, optimizing tread life. The zigzag shape of the main groove is designed to provide resistance to hydroplaning, while the tread notches create biting edges for traction on snow and ice. The ESPIA EPZ II is specifically designed for the most unforgiving winters.

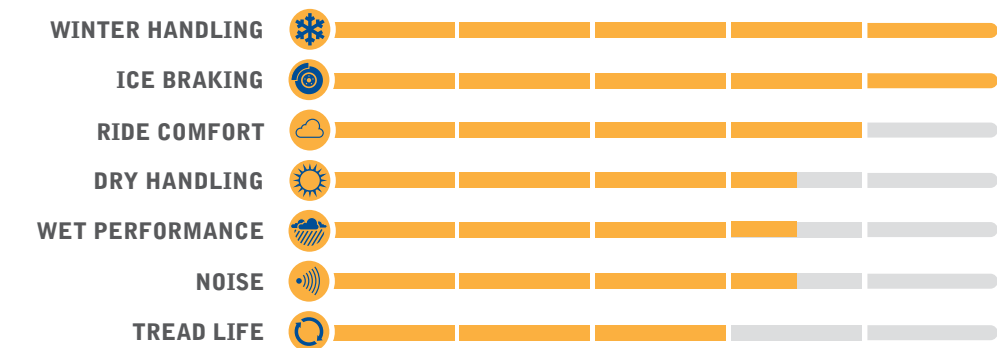
**AVAILABLE TIRE SIZES**  
24 SIZES

**AVAILABLE RIM SIZING**  
14" – 18"

**SPEED RATING**  
T

**RATING**  
SEVERE SNOW CONDITIONS

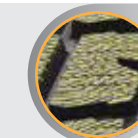
### PERFORMANCE RATINGS†



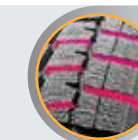
**POPULAR FITMENTS:**

- AUDI A3
- CHEVROLET CRUZE
- CHEVROLET MALIBU
- FORD FUSION
- HONDA CIVIC
- HYUNDAI ELANTRA
- KIA SOUL
- NISSAN ALTIMA
- TOYOTA COROLLA
- TOYOTA PRIUS
- VOLKSWAGEN PASSAT

### TIRE HIGHLIGHTS



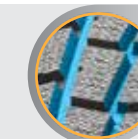
**HIGH-DENSITY SIPES**  
move water and snow away from the tread surface for continuous road connection with over 13,000 millimeters in edges added from its predecessor.



**WIDE LATERAL GROOVES**  
work together with wide pockets built into the tire to allow more snow to pack into the tread, clearing the road surface quicker for increased snow traction in slushy or deep snow conditions.



**STRATEGICALLY DESIGNED RIB PLACEMENT**  
with larger outer-edge block-style ribs provide a comfortable and stable drive while maneuvering the vehicle, no matter the road-surface condition.



**WIDE CIRCUMFERENTIAL GROOVES**  
channel water away from the tread for consistent contact with the road surface, increasing wet traction and driver confidence.



### NEWLY ENHANCED 3D CANYON SIPLE TECHNOLOGY

with a much thinner sipe design increases sipe density by 25% (than its predecessor) which allows for more edges per tread block. This increases ice braking and enhances snow and wet traction.

### SIZES AND SPECIFICATIONS

NEXT PAGE

\*This tire is designed for severe snow conditions and meets the RMA (Rubber Manufacturers Association) snow traction performance requirements.  
†Performance ratings are based on a scale of 1 to 5 with 5 being best. Ratings are in comparison to other Falken Tires products in the same category.

Product images are for illustrative purposes only. Tread design, technical information and tire construction subject to change without notice and may vary by size.

# ESPIA EPZ II

## CONFIDENT WINTER TRACTION

Wheel Dia.	Size	Extra Load	Load Index/Speed Rating	Item Number	Measuring Rim Width (in)	Approved Rim Width Range (in)	Overall Diameter (in)	Section Width (in)	Revolutions Per Mile	Tread Width (in)	Tread Depth (mm)	Tread Depth (/32")	Tire Weight (lbs)	Max PSI (Cold)	Max Load (lbs)
14"	175/65R14	XL	86T	28314442	5.0	5.0 - 6.0	23.0	7.0	918	5.8	8.8	11.1	16.3	50	1168
	185/65R14	XL	90T	28314443	5.5	5.0 - 6.5	23.5	7.4	905	6.2	8.9	11.2	17.6	50	1323
15"	175/65R15	XL	88T	28314563	5.0	5.0 - 6.0	24.0	7.0	783	5.8	8.8	11.1	17.6	50	1235
	185/60R15	XL	88T	28314516	5.5	5.0 - 6.5	23.9	7.4	883	6.2	8.9	11.2	17.9	50	1235
	185/65R15	XL	92T	28314542	5.5	5.0 - 6.5	24.5	7.4	865	6.2	8.9	11.2	18.5	50	1389
	195/60R15	XL	92T	28314551	6.0	5.5 - 7.0	24.3	7.9	868	6.5	9.0	11.3	19.6	50	1389
	195/65R15	XL	95T	28314543	6.0	5.5 - 7.0	25.0	7.9	848	6.5	9.0	11.3	20.3	50	1521
	205/65R15	XL	99T	28314544	6.0	5.5 - 7.5	25.5	8.2	832	6.8	9.1	11.5	22.9	50	1709
	215/70R15	SL	98T	28314477	6.5	5.5 - 7.0	27.1	8.7	877	7.0	9.2	11.6	26.0	44	1653
16"	205/55R16	XL	94T	28314483	6.5	5.5 - 7.5	25.0	8.4	842	6.8	9.1	11.5	24.5	50	1477
	205/60R16	XL	96T	28314652	6.0	5.5 - 7.5	25.8	8.2	818	6.8	9.1	11.5	23.6	50	1565
	205/65R16	SL	95T	28314626	6.0	5.5 - 7.5	26.5	8.2	800	6.8	9.1	11.5	23.8	44	1521
	215/60R16	XL	99T	28314479	6.5	6.0 - 7.5	26.3	8.7	805	7.2	9.2	11.6	25.6	50	1709
	215/65R16	SL	98T	28314681	6.5	6.0 - 7.5	27.0	8.7	786	7.2	9.2	11.6	24.9	44	1653
	225/60R16	XL	102T	28314480	6.5	6.0 - 8.0	26.7	9.0	793	7.5	9.3	11.7	26.7	50	1874
	225/65R16	SL	100T	28314673	6.5	6.0 - 8.0	27.5	9.0	771	7.5	9.3	11.7	27.6	44	1764

Wheel Dia.	Size	Extra Load	Load Index/Speed Rating	Item Number	Measuring Rim Width (in)	Approved Rim Width Range (in)	Overall Diameter (in)	Section Width (in)	Revolutions Per Mile	Tread Width (in)	Tread Depth (mm)	Tread Depth (/32")	Tire Weight (lbs)	Max PSI (Cold)	Max Load (lbs)
17"	215/55R17	XL	98T	28314727	7.0	6.0 - 7.5	26.5	8.9	798	7.1	9.2	11.6	25.1	50	1653
	225/45R17	XL	94T	28314795	7.5	7.0 - 8.5	25.2	8.9	826	7.4	9.2	11.6	24.5	50	1477
	225/50R17	XL	98T	28314772	7.0	6.0 - 8.0	26.1	9.2	808	7.4	9.2	11.6	26.0	50	1653
	225/55R17	XL	101T	28314762	7.0	6.0 - 8.0	26.9	9.2	783	7.5	9.2	11.6	26.9	50	1819
	235/55R17	SL	99T	28314725	7.5	6.5 - 8.5	27.3	9.6	778	7.8	9.3	11.7	28.2	44	1709
18"	225/40R18	XL	92T	28314892	8.0	7.5 - 9.0	25.1	9.1	826	7.4	9.2	11.6	24.3	50	1389
	225/45R18	XL	95T	28314824	7.5	7.0 - 8.5	26.1	8.9	803	7.4	9.2	11.6	26.2	50	1521
	235/50R18	XL	101T	28314825	7.5	6.5 - 8.5	27.5	9.6	769	7.8	9.3	11.7	29.0	50	1819



# ESPIA EPZ II SUV

CONFIDENT WINTER PERFORMANCE DESIGNED FOR SUVs

The **ESPIA EPZ II SUV** ensures driving confidence in the harshest winter conditions. Using the latest technology in tread design, compound and construction, the EPZ II SUV is an excellent blend of winter performance and handling. The directional tread design coupled with wide circumferential grooves significantly enhance hydroplane resistance for superb wet handling, while the tread surface etching delivers exceptional traction in icy conditions. The ESPIA EPZ II SUV is specifically designed for the most unforgiving winters.

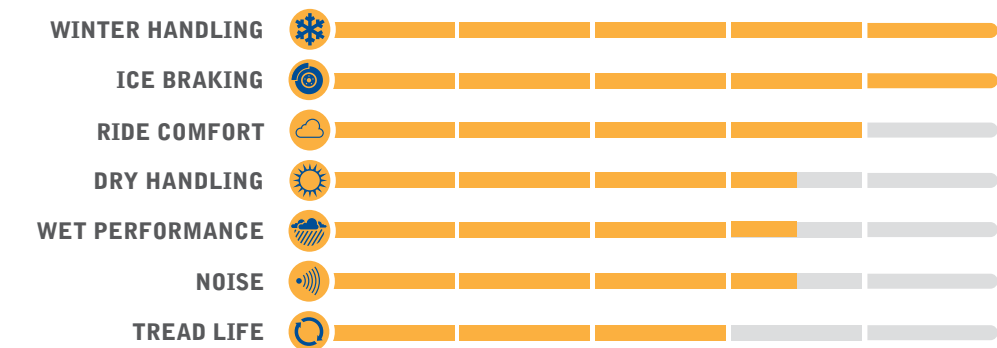
**AVAILABLE TIRE SIZES**  
12 SIZES

**AVAILABLE RIM SIZING**  
16" – 20"

**SPEED RATING**  
R

**RATING**  
SEVERE SNOW CONDITIONS

## PERFORMANCE RATINGS\*



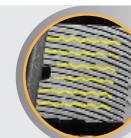
**POPULAR FITMENTS:**

- ACURA MDX
- CHEVROLET EQUINOX
- CHEVROLET SUBURBAN
- CHEVROLET TAHOE
- FORD ESCAPE
- HONDA PILOT
- JEEP GRAND CHEROKEE
- JEEP PATRIOT
- KIA SORENTO
- LEXUS RX
- SUBARU FORESTER

## TIRE HIGHLIGHTS



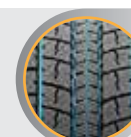
**TREAD SURFACE ETCHING**  
provides slip resistant contact for excellent ice traction and braking performance during severe winter conditions.



**HIGH DENSITY SIPES**  
move water and snow away from the tread surface creating biting edges for continuous road connection.



**DIRECTIONAL TREAD DESIGN**  
built for wet weather performance, the directional tread design improves hydroplaning resistance by quickly dispersing water.



**WIDE CIRCUMFERENTIAL GROOVES**  
channel water away from the tread for consistent contact with the road surface, increasing wet traction and driver confidence.



### NEWLY ENHANCED 3D CANYON SIPE TECHNOLOGY

increases ice braking, and enhances snow, wet and dry handling by allowing more edges per tread block, yet still provides individual block rigidity by working together to support each other, suppressing block flex.

## SIZES AND SPECIFICATIONS

NEXT PAGE

\*This tire is designed for severe snow conditions and meets the RMA (Rubber Manufacturers Association) snow traction performance requirements.  
\*Performance ratings are based on a scale of 1 to 5 with 5 being best. Ratings are in comparison to other Falken Tires products in the same category.

Product images are for illustrative purposes only. Tread design, technical information and tire construction subject to change without notice and may vary by size.

# ESPIA EPZ II SUV

## CONFIDENT WINTER TRACTION

Wheel Dia.	Size	Extra Load	Load Index/Speed Rating	Item Number	Measuring Rim Width (in)	Approved Rim Width Range (in)	Overall Diameter (in)	Section Width (in)	Revolutions Per Mile	Tread Width (in)	Tread Depth (mm)	Tread Depth (/32")	Tire Weight (lbs)	Max PSI (Cold)	Max Load (lbs)
<b>16"</b>	215/70R16	SL	100R	28409969	6.5	5.5 - 7.0	27.8	8.7	757	6.9	10.8	13.6	29.0	44	1764
	225/60R17	SL	99R	28407747	6.5	6.0 - 8.0	27.7	8.6	761	7.2	10.8	13.6	30.9	44	1709
<b>17"</b>	235/60R17	SL	102R	28402960	7.0	6.5 - 8.5	28.2	9.3	751	7.6	10.8	13.6	33.5	44	1874
	215/65R17	SL	99R	28404905	6.5	6.0 - 7.5	28.2	8.6	751	6.8	10.8	13.6	27.0	44	1709
	225/65R17	SL	102R	28409020	6.5	6.0 - 8.0	28.5	8.9	744	7.1	10.8	13.6	31.0	44	1874
	235/65R17	XL	108R	28408092	7.0	6.5 - 8.5	29.2	9.3	729	7.4	10.8	13.6	34.8	50	2205
	265/70R17	SL	115R	28401905	8.0	7.0 - 9.0	31.5	10.9	672	8.3	11.0	13.9	43.0	44	2679

Wheel Dia.	Size	Extra Load	Load Index/Speed Rating	Item Number	Measuring Rim Width (in)	Approved Rim Width Range (in)	Overall Diameter (in)	Section Width (in)	Revolutions Per Mile	Tread Width (in)	Tread Depth (mm)	Tread Depth (/32")	Tire Weight (lbs)	Max PSI (Cold)	Max Load (lbs)
<b>18"</b>	235/55R18	SL	100R	28401449	7.5	6.5 - 8.5	28.2	9.6	747	7.6	10.8	13.6	32.0	44	1764
	255/55R18	XL	109R	28405731	8.0	7.0 - 9.0	29.1	10.2	728	8.3	11.0	13.9	41.0	50	2271
	225/60R18	SL	100R	28401235	6.5	6.0 - 8.0	28.7	8.8	738	7.2	10.8	13.6	31.0	44	1764
	235/60R18	XL	107R	28403995	7.0	6.5 - 8.5	29.2	9.2	725	7.6	10.8	13.6	35.3	50	2149
<b>20"</b>	275/55R20	SL	113R	28404196	8.5	7.5 - 9.5	32.0	11.1	661	8.9	11.0	13.9	46.0	44	2535

Product images are for illustrative purposes only. Tread design, technical information and tire construction subject to change without notice and may vary by size.





# EUROWINTER HS449

## DEPENDABLE WINTER PERFORMANCE

The **EUROWINTER HS449** raises the bar for the winter performance segment. With a silica-enriched compound, the HS449 is a blend of winter capability and dry performance. The directional tread design features an optimal amount of void ratio for grip in wet and slushy conditions as well as snow evacuation. 3D Canyon Sipe Technology is utilized in the tread for ice grip and wet performance to help the tire maintain contact with the road in severe conditions. For those looking for performance in winter with dependability in the dry, the HS449 hits the mark.

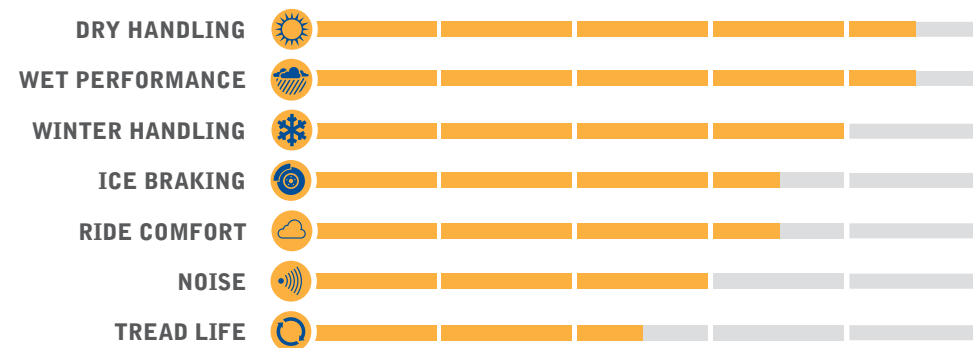
**AVAILABLE TIRE SIZES**  
61 SIZES

**RIM SIZING**  
13" – 20"

**SPEED RATING**  
T • H • V

**RATING**  
SEVERE SNOW CONDITIONS 

### PERFORMANCE RATINGS†



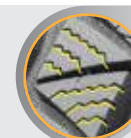
#### POPULAR FITMENTS:

- AUDI A4 QUATTRO
- BMW 320i XDRIVE
- BUICK LACROSSE
- CHEVROLET MALIBU
- FORD FUSION
- FORD FLEX
- HONDA CROSSTOUR
- HYUNDAI VELOSTER
- INFINITY Q50
- KIA OPTIMA
- MAZDA 6
- SUBARU IMPREZA WRX

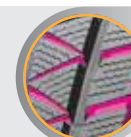
### TIRE HIGHLIGHTS



**SILICA-ENRICHED COMPOUND**  
is utilized to help maintain tire flexibility in cold weather which allows for consistent winter performance.



**3D CANYON SIPE TECHNOLOGY**  
increases ice braking, and enhances snow, wet and dry handling by allowing more edges per tread block, yet still provides individual block rigidity by working together to support each other, suppressing block flex.



**HIGH-VOID DIRECTIONAL TREAD DESIGN**  
features multiple wide lateral grooves in the tread design which help to maintain contact with the road in winter conditions, providing confidence for winter driving.



**STAGGERED BLOCK VARIATION**  
breaks up tire pattern noise and leads to a quiet ride inside your vehicle.

### SIZES AND SPECIFICATIONS

NEXT PAGE

\*This tire is designed for severe snow conditions and meets the RMA (Rubber Manufacturers Association) snow traction performance requirements.  
†Performance ratings are based on a scale of 1 to 5 with 5 being best. Ratings are in comparison to other Falken Tires products in the same category.

Product images are for illustrative purposes only. Tread design, technical information and tire construction subject to change without notice and may vary by size.

# EUROWINTER HS449

## DEPENDABLE WINTER PERFORMANCE

Wheel Dia.	Size	Extra Load	Load Index/Speed Rating	Item Number	Measuring Rim Width (in)	Approved Rim Width Range (in)	Overall Diameter (in)	Section Width (in)	Revolutions Per Mile	Tread Width (in)	Tread Depth (mm)	Tread Depth (/32")	Tire Weight (lbs)	Max PSI (Cold)	Max Load (lbs)
<b>13"</b>	175/70R13	SL	82T	28494372	5.0	4.5 - 6.0	22.8	7.0	925	5.4	8.9	11.2	17	44	1047
	175/65R14	SL	82T	28494442	5.0	5.0 - 6.0	23.1	7.0	918	5.6	8.7	11.0	17	44	1047
<b>14"</b>	175/70R14	XL	88T	28494472	5.0	4.5 - 6.0	23.9	7.0	883	5.4	8.9	11.2	18	50	1235
	185/60R14	SL	82T	28491451	5.5	5.0 - 6.5	22.8	7.4	928	6.0	8.8	11.1	17	44	1047
	185/65R14	SL	86T	28494443	5.5	5.0 - 6.5	23.6	7.4	898	5.9	8.7	11.0	19	44	1168
<b>15"</b>	175/65R15	SL	84T	28494563	5.0	5.0 - 6.0	24.1	7.0	877	5.6	8.7	11.0	17	44	1102
	185/55R15	SL	82H	28491575	6.0	5.0 - 6.5	23.2	7.5	908	6.4	8.8	11.1	17	51	1047
	185/60R15	SL	84T	28494516	5.5	5.0 - 6.5	23.8	7.4	886	6.0	8.8	11.1	19	44	1102
	185/65R15	SL	88T	28494542	5.5	5.0 - 6.5	24.5	7.4	860	5.9	8.7	11.0	20	44	1235
	195/55R15	SL	85H	28491561	6.0	5.5 - 7.0	23.6	7.8	895	6.7	8.9	11.2	19	51	1135
	195/60R15	SL	88T	28494551	6.0	5.5 - 7.0	24.3	7.8	871	6.4	8.9	11.2	20	44	1235
	195/65R15	SL	91T	28494543	6.0	5.5 - 7.0	25.0	8.0	848	6.2	8.9	11.2	21	44	1356
	205/60R15	SL	91H	28491552	6.0	5.5 - 7.5	24.7	8.2	856	6.7	9.0	11.3	21	51	1356
	205/65R15	SL	94T	28494544	6.0	5.5 - 7.5	25.6	8.2	829	6.5	9.1	11.5	23	44	1477
	215/70R15	SL	98T	28494477	6.5	5.5 - 7.0	27.0	8.7	845	6.7	9.3	11.7	25	44	1653
	<b>16"</b>	195/55R16	SL	87H	28491615	6.0	5.5 - 7.0	24.6	7.8	856	6.7	8.9	11.2	20	51
205/50R16		XL	91H	28491671	6.5	5.5 - 7.5	24.2	8.2	871	7.3	9.0	11.3	22	50	1356
205/55R16		SL	91H	28491483	6.5	5.5 - 7.5	24.9	8.4	845	7.1	9.0	11.3	23	51	1356
205/60R16		XL	96H	28491652	6.0	5.5 - 7.5	25.8	8.1	821	6.7	9.0	11.3	24	50	1565
205/65R16		SL	95H	28491626	6.0	5.5 - 7.5	26.6	8.2	795	6.5	9.1	11.5	25	51	1521
215/55R16		SL	93H	28491662	7.0	6.0 - 7.5	25.3	8.9	834	7.4	9.1	11.5	23	51	1433
215/55R16		XL	97H	28491664	7.0	6.0 - 7.5	25.3	8.9	834	7.4	9.1	11.5	25	50	1609
215/60R16		XL	99H	28491479	6.5	6.0 - 7.5	26.3	8.7	805	7.0	9.1	11.5	24	50	1709
215/65R16		SL	98H	28491681	6.5	6.0 - 7.5	27.1	8.7	783	6.9	9.2	11.6	26	51	1653
225/55R16		SL	95H	28491670	7.0	6.0 - 8.0	25.7	9.2	821	7.8	9.2	11.6	25	51	1521
225/60R16		XL	102V	28492480	6.5	6.0 - 8.0	26.7	9.0	795	7.3	9.2	11.6	28	50	1874
225/65R16	SL	100T	28494673	6.5	6.0 - 8.0	27.6	9.0	769	7.2	9.5	12.0	28	44	1764	
235/60R16	SL	100H	28491655	7.0	6.5 - 8.5	27.1	9.5	783	7.7	9.3	11.7	29	51	1764	

Wheel Dia.	Size	Extra Load	Load Index/Speed Rating	Item Number	Measuring Rim Width (in)	Approved Rim Width Range (in)	Overall Diameter (in)	Section Width (in)	Revolutions Per Mile	Tread Width (in)	Tread Depth (mm)	Tread Depth (/32")	Tire Weight (lbs)	Max PSI (Cold)	Max Load (lbs)
<b>17"</b>	205/50R17	XL	93V	28492770	6.5	5.5 - 7.5	25.3	8.2	829	7.3	9.0	11.3	23	50	1433
	215/45R17	XL	91V	28492792	7.0	7.0 - 8.0	24.7	8.3	840	7.4	9.1	11.5	22	50	1356
	215/50R17	XL	95V	28492771	7.0	6.0 - 7.5	25.6	8.7	821	7.7	9.1	11.5	24	50	1521
	215/55R17	XL	98V	28492727	7.0	6.0 - 7.5	26.4	8.9	798	7.4	9.1	11.5	25	50	1653
	215/60R17	SL	96H	28491729	6.5	6.0 - 7.5	27.3	8.7	774	7.0	9.1	11.5	27	51	1565
	225/45R17	XL	94V	28492795	7.5	7.0 - 8.5	25.0	8.6	834	7.8	9.2	11.6	24	50	1477
	225/50R17	XL	98V	28492772	7.0	6.0 - 8.0	26.0	9.0	808	8.0	9.2	11.6	26	50	1653
	225/55R17	XL	101V	28492762	7.0	6.0 - 8.0	26.9	9.1	786	7.8	9.2	11.6	27	50	1819
	225/60R17	SL	99H	28491728	6.5	6.0 - 8.0	27.7	8.9	764	7.3	9.2	11.6	29	51	1709
	225/65R17	SL	102H	28491775	6.5	6.0 - 8.0	28.6	9.0	740	7.2	9.3	11.7	30	51	1874
	235/45R17	XL	97V	28492794	8.0	7.5 - 9.0	25.4	9.2	821	8.1	9.3	11.7	25	50	1609
	235/55R17	XL	103V	28492725	7.5	6.5 - 8.5	27.2	9.5	776	8.1	9.3	11.7	28	50	1929
	235/60R17	SL	102H	28491717	7.0	6.5 - 8.5	28.2	9.4	751	7.7	9.3	11.7	32	51	1874
	235/65R17	XL	108H	28491790	7.0	6.5 - 8.5	29.1	9.4	730	7.5	9.4	11.8	33	50	2205
	245/45R17	XL	99V	28492784	8.0	7.5 - 9.0	25.8	9.6	808	8.5	9.3	11.7	26	50	1709
	<b>18"</b>	225/40R18	XL	92V	28492892	8.0	7.5 - 9.0	25.2	9.1	823	8.0	9.2	11.6	25	50
225/45R18		XL	95V	28492824	7.5	7.0 - 8.5	26.1	8.7	800	7.8	9.2	11.6	24	50	1521
225/55R18		SL	98V	28492889	7.0	6.0 - 8.0	27.9	9.2	755	7.8	9.2	11.6	28	51	1653
225/60R18		SL	100H	28491826	6.5	6.0 - 8.0	28.7	9.0	736	7.3	9.2	11.6	31	51	1764
235/45R18		XL	98V	28492895	8.0	7.5 - 9.0	26.4	9.3	788	8.1	9.3	11.7	26	50	1653
235/50R18		XL	101V	28492825	7.5	6.5 - 8.5	27.4	9.6	769	8.4	9.3	11.7	29	50	1819
235/55R18		XL	104H	28491817	7.5	6.5 - 8.5	28.3	9.6	745	8.1	9.3	11.7	31	50	1984
235/60R18		XL	107H	28491816	7.0	6.5 - 8.5	29.2	9.4	723	7.6	9.3	11.7	32	50	2149
245/40R18		XL	97V	28492894	8.5	8.0 - 9.5	25.9	9.5	805	8.6	9.4	11.8	26	50	1609
245/45R18		XL	100V	28492865	8.0	7.5 - 9.0	26.8	9.6	778	8.5	9.4	11.8	27	50	1764
245/50R18		XL	104V	28492820	7.5	7.0 - 8.5	27.8	10.0	758	8.7	9.3	11.7	32	50	1984
255/45R18	XL	103V	28492866	8.5	8.0 - 9.5	27.1	10.0	769	8.8	9.4	11.8	29	50	1929	
255/55R18	XL	109V	28492845	8.0	7.0 - 9.0	29.1	10.3	725	8.8	9.5	12.0	35	50	2271	
265/60R18	SL	110V	28492854	8.0	7.5 - 9.5	30.6	10.7	694	8.7	9.4	11.8	38	51	2337	
<b>19"</b>	225/45R19	SL	92V	28493937	7.5	7.0 - 8.5	27.0	8.6	769	7.8	9.2	12.0	25	51	1389
	235/55R19	XL	105V	28492970	7.5	6.5 - 8.5	29.3	9.6	717	8.1	9.3	11.7	33	50	2039
	255/50R19	XL	107V	28492949	8.0	7.0 - 9.0	29.2	10.1	719	9.1	9.5	12.0	34	50	2149
<b>20"</b>	275/45R20	SL	106V	28492016	9.0	8.5 - 10.5	29.9	10.7	698	9.5	9.5	12.0	35	51	2094

Product images are for illustrative purposes only. Tread design, technical information and tire construction subject to change without notice and may vary by size.

# ORIGINAL EQUIPMENT



## ZIEX ZE001 A/S

Nissan Rogue – OE REPLACEMENT

Wheel Dia.	Size	Extra Load	Load Index / Speed Rating	Item Number	Measuring Rim Width (in)	Approved Rim Width Range (in)	Overall Diameter (in)	Section Width (in)	Revolutions Per Mile	Tread Width (in)	Tread Depth (mm)	Tread Depth (/32")	Tire Weight (lbs.)	Max PSI (Cold)	Max Load (lbs.)	U.T.Q.G.
18"	225/60R18	SL	100H	59000060	6.5	6.0-8.0	28.7	9.2	726	7.4	8	10	27	46	1764	360-A-A



## ZIEX CT50 A/S

Chrysler Pacifica – OE REPLACEMENT  
Mazda CX-9 – OE REPLACEMENT

Wheel Dia.	Size	Extra Load	Load Index / Speed Rating	Item Number	Measuring Rim Width (in)	Approved Rim Width Range (in)	Overall Diameter (in)	Section Width (in)	Revolutions Per Mile	Tread Width (in)	Tread Depth (mm)	Tread Depth (/32")	Tire Weight (lbs.)	Max PSI (Cold)	Max Load (lbs.)	UTQG
20"	245/50R20	SL	102V	59000020	7.5	7.0-8.5	29.9	9.7	698	8.3	8.2	10	33	51	1874	480-A-A
	255/50R20	SL	104V	59000070	8.5	7.0-9.0	30.1	10.6	694	8.5	8.2	10	35	51	1984	300-A-A



## WILDPEAK H/T (HT01A2)

Jeep Compass Trailhawk – OE REPLACEMENT  
Jeep Renegade Trailhawk – OE REPLACEMENT

Wheel Dia.	Size	Extra Load	Load Index / Speed Rating	Item Number	Measuring Rim Width (in)	Approved Rim Width Range (in)	Overall Diameter (in)	Section Width (in)	Revolutions Per Mile	Tread Width (in)	Tread Depth (mm)	Tread Depth (/32")	Tire Weight (lbs.)	Max PSI (Cold)	Max Load (lbs.)	UTQG
17"	215/65R17	SL	99S	59000031	6.5	6.0-7.5	28.0	8.6	755	6.7	8	11	27	44	1709	500-B-B
	215/65R17	SL	99S	59000032	6.5	6.0-7.5	28.0	8.6	755	6.7	8	11	27	44	1709	500-B-B



## SINCERA SN250A A/S

Volkswagen Golf Alltrack – OE REPLACEMENT  
Nissan Rogue Sport – OE REPLACEMENT

Wheel Dia.	Size	Extra Load	Load Index / Speed Rating	Item Number	Measuring Rim Width (in)	Approved Rim Width Range (in)	Overall Diameter (in)	Section Width (in)	Revolutions Per Mile	Tread Width (in)	Tread Depth (mm)	Tread Depth (/32")	Tire Weight (lbs.)	Max PSI (Cold)	Max Load (lbs.)	UTQG
17"	205/55R17	XL	95H	59000110	6.5	5.5-7.0	26.0	8.7	802	7.1	8	9	21	50	1521	320-A-A
	215/60R17	SL	96H	59000280	7.0	6.0-7.5	27.2	8.8	774	7.1	9	11	25	51	1565	320-A-A



## ZE914A ECORUN

Chrysler 200 – OE REPLACEMENT  
Jeep Compass / Patriot – OE REPLACEMENT  
Volkswagen Tiguan – OE REPLACEMENT

Wheel Dia.	Size	Extra Load	Load Index / Speed Rating	Item Number	Measuring Rim Width (in)	Approved Rim Width Range (in)	Overall Diameter (in)	Section Width (in)	Revolutions Per Mile	Tread Width (in)	Tread Depth (mm)	Tread Depth (/32")	Tire Weight (lbs.)	Max PSI (Cold)	Max Load (lbs.)	UTQG
17"	215/55R17	SL	94W	28943727	7.0	6.0 - 7.5	26.3	8.9	800	7.4	8	10	23	51	1477	320-A-A
	215/60R17	SL	96H	28941729	6.5	6.0 - 7.5	27.2	8.5	763	6.4	8	8	25	51	1565	320-A-A
	215/65R17	SL	99V	59000240	7.0	6.0 - 7.5	28.2	9.0	715	7.1	8	10	24	51	1709	300-A-A

Product images are for illustrative purposes only. Tread design, technical information and tire construction subject to change without notice and may vary by size.

## FALKEN TIRES LIMITED WARRANTY

Effective March 1, 2017

### I. Tires Covered by this Warranty:

This limited warranty applies to FALKEN brand steel-belted radial passenger car and selected light truck tires bearing the complete description and serial number as required by the DOT. This warranty applies to all Falken branded PCR & LTR products stamped with a 2017 production date or newer. Tires produced before 2017 are subject to previous published warranties. This warranty is effective only to tires for which claims are made within six years of date of production, based on the tire DOT serial number.

### II. What is Warranted and for How Long:

#### A. Material and Workmanship Warranty:

- Every FALKEN brand radial tire is warranted against defects in material and workmanship for the usable life of the original tread within six years of date of production (for 2017 produced and newer) based on the tire DOT serial number. The usable life of the original tread ends at the appearance of the treadwear out indicators at 2/32" (1.6mm) remaining tread depth.
- If a tire becomes unserviceable due to such defect within the first 2/32" (1.6mm) of wear, it will be replaced free of charge with a comparable FALKEN tire.
- After the first 2/32" (1.6mm) wear, a prorated adjustment credit to the customer will be given based on the percentage of remaining usable tread depth, down to the remaining 2/32" (1.6mm) wear bars, at which point no credit is due.
- OUT-OF-ROUND or OUT-OF-BALANCE claims will be accepted for adjustment only during the first 1/32" (0.8mm) of the original tread depth, and tires will be replaced free of charge with comparable FALKEN tires. A set of four (4) tires from the same vehicle will not be accepted for out-of-round or out-of-balance claims.

#### B. Limited Tread Life Warranty:

Most FALKEN brand tires come with a tread life warranty. Prorated adjustment credit will be given based on percentage of mileage not achieved on tires. FALKEN brand radial tires listed below are warranted to achieve the following mileages before becoming worn out at 2/32" (1.6mm) remaining tread depth:

Passenger Car Tires:	Miles / km
ZE950 (600-A-A UTQG/H&V Rated).....	65,000 / 104,000
ZE950 (500-A-A UTQG/W Rated).....	45,000 / 72,000
SN250 (Speed Ratings H, V).....	75,000 / 121,000
SN250 (Speed Rating T), SN211 (All Sizes).....	80,000 / 128,000
FK450.....	50,000 / 80,000
ZE329 (60/65 Series).....	60,000 / 96,000
ZE329 (55 Series and Below).....	30,000 / 48,000
FK510, FK453, ZE914 FK453CC, HS439, HS449, RT615K+, ESPIA EPZ, ESPIA EPZ II.....	No Tread Life Warranty

#### Light Truck Tires:

WILDPEAK A/T3W.....	55,000 / 89,000
WILDPEAK A/T (No warranty on 33" and above overall diameters).....	50,000 / 80,000
WILDPEAK H/T.....	60,000 / 96,000
S/TZ05 (All Sizes).....	50,000 / 80,000
WILDPEAK M/T.....	No Tread Life Warranty

This tread life warranty is applicable only for normal highway use when all of the owner's obligations listed below in Section IV are met. Warranty does not apply to any FALKEN designs not listed.

- All eligible tread life warranty claims are based on the tire being worn down evenly to the wear bars at 2/32" (1.6mm).
- Any tire with measured tread difference of 2/32" (1.6mm) or more across the tread (main circumferential tread grooves) will be considered irregularly worn and rejected.
- Any tires submitted with 5/32" (4.0mm) or more remaining tread depths will be rejected for tread life warranty claim.
- Any tires submitted with 3/32" to 4/32" (2.4mm-3.2mm) remaining mileage and tread depth to be achieved will be projected and prorated as if the tire was worn down to 2/32" (1.6mm).
- All submitted mileage claims are to include proof of tire rotation; either copy of warranty card with completed rotations listed, or copies of the customers invoice showing rotation mileage and vehicle information will be accepted.

### III. What is Not Covered (Exclusions):

- Unserviceability due to road hazard damages (cuts, snags, punctures, bruises, impact breaks, etc.), improper repair technique or materials, improper inflation, overload, irregular wear, wheel imbalance, defective vehicle mechanical components (brakes, suspension, wheels, etc.), improper suspension alignment, accident, fire, acts of God, chemical damage, damage from chain use, racing, off-road use, runflat, improper installation, vandalism, or abuse.
- Tires on any vehicle registered and normally used outside the 50 United States, Puerto Rico, and Canada.
- Tires branded "NA" or having the DOT number removed.
- Tires presented for warranty claim by other than the original purchaser, or tires that were transferred to another vehicle from the one upon which they were originally installed, regardless of by whom. This warranty is not transferable.
- Any tires whose failure is caused by any previous damages or repairs.
- Any cost of tire repair or retreading is not covered by this warranty and will be solely borne by the tire owner.
- The tread life warranty is not applicable if tires are used in commercial service or, determined at our discretion, have premature or irregular wear due to abusive service or defective vehicle conditions. Abusive service includes off-road use, excessive mountain road driving, racing, or passenger car tires on pick-up, RV, or utility vehicles.
- Tread life warranty does not apply to vehicles with staggered tire fitments.
- Tires that have tread siping or otherwise modified from the original design.

### IV. Owners Obligations:

At the time of purchase, the tire(s) must be properly installed, balanced, and air pressure set to the vehicle manufacturer's specifications if original equipment size, or at an air pressure adequate to carry the vehicle load if a different replacement size. At least monthly, owner must check tire air pressure with a gauge and inflate to recommended cold PSI level. Do not rely on car servicers to perform the checks. Tires must be rotated at least every 5,000 miles, or earlier if unequal wear is occurring, and proof of compliance must be recorded on the warranty card. Owner must have tires rebalanced if vibration is experienced, and alignment must be checked if unequal or rapid wear is occurring, or when scheduled by the vehicle maker.

All warranty claims must be presented to an authorized FALKEN dealer. Tire owners must present their warranty card verifying mileage, proof of date and place of purchase, to make a tread life warranty claim. The name of the FALKEN dealer from whom the tires were purchased must be included on the form.

### V. Legal Rights:

ALL IMPLIED WARRANTIES, INCLUDING WARRANTIES OF MERCHANTABILITY AND FITNESS FOR A PARTICULAR PURPOSE, SHALL BE LIMITED IN DURATION TO THE ABOVE PERIOD. TO THE EXTENT PERMITTED BY LAW, FALKEN TIRE CORPORATION SHALL NOT BE RESPONSIBLE FOR INCIDENTAL OR CONSEQUENTIAL DAMAGES, SUCH AS LOSS OF USE OF THE TIRE OR THE VEHICLE ON WHICH IT IS USED, INCONVENIENCE, OR COMMERCIAL LOSS. SOME STATES DO NOT ALLOW LIMITATIONS ON HOW LONG AN IMPLIED WARRANTY LASTS, OR THE EXCLUSION OR LIMITATION OF INCIDENTAL OR CONSEQUENTIAL DAMAGES, SO THE ABOVE LIMITATIONS OR EXCLUSIONS MAY NOT APPLY TO YOU. THIS WARRANTY GIVES YOU SPECIFIC LEGAL RIGHTS, AND YOU MAY ALSO HAVE OTHER RIGHTS, WHICH VARY FROM STATE TO STATE. THIS IS THE ONLY EXPRESS WARRANTY APPLICABLE TO FALKEN BRAND TIRES, AND SUPERSEDES THE TERMS OF ANY PREVIOUS WARRANTY. FALKEN NEITHER ASSUMES NOR AUTHORIZES ANYONE TO MAKE OR ASSUME FOR IT ANY OTHER WARRANTY.

## WARRANTY ADJUSTMENT POLICY AND PROCEDURES

Effective March 1, 2017

Tires sold by SUMITOMO RUBBER NORTH AMERICA, INC. (dba) FALKEN TIRE CORPORATION ("FTC") may be submitted for warranty adjustment by dealers only within six (6) years from the DOT number date (for 2017 produced and newer) of production, using the following guidelines.

### Claim Forms:

Each tire submitted by dealers must be listed on and accompanied by an FTC Warranty Adjustment Claim Form. Up to ten tires may be reported per form. Forms are serial numbered for control and later credit memo reference, and must not be copied for multiple use. Tires received by FTC without claim forms will not be processed for adjustment. Call 800-723-2553 or contact your FTC sales representative to request forms.

After fully completing the form with all required information, send the original white form in an envelope taped to one of the tires, with the shipment to the FTC warehouse shown on the next page that services your area. Detach and keep the yellow copy for your records.

### Tire Claim Number and Damage Marking:

Each tire must be clearly marked with tire crayon or grease pen with the claim form serial and line number that relates to that tire. (Example "525806-1" for claim form 525806, line 1). If the FTC inspector has trouble identifying a claim, processing delay of your credit may occur.

If possible mark the site of the damage or problem area with chalk. If FTC cannot find the problem, you may not get the credit you are seeking.

### Returning Warranty Tires to FTC Warehouses:

Dealer or Distributor locations with warranty return tires must contact their servicing FTC Warehouse Manager for return approval and shipping instructions.

Locations within FTC's local delivery areas may have warranty adjustment tires picked up by FTC trucks if so serviced, or you may bring the tires to the warehouse when will-calling an order. In any case, customers must contact their servicing FTC warehouse Manager for approval before making a return.

Customers may also ship adjustment tires to their servicing FTC warehouse. FTC must authorize all returns prior to shipment. **Freight collect shipments without prior authorization will not be accepted.**

On shipping documents identify the cargo as: "Class 50 – Scrap Tire Having No Value".

FTC will pay freight cost on all adjustment tires subject to the following limitations:

- |                                       |  |
|---------------------------------------|--|
| (a) Shipments of 1,000 lbs. or more   | Freight Prepaid  |
| (b) Shipments of less than 1,000 lbs. | One (1) freight prepaid shipment every 60 days per location. |

For general estimation purposes, the following weights may be used in load calculations:  
 Passenger – 20 lbs. each    Light Truck – 45 lbs. each    Medium Truck – 100 lbs. each

### WARRANTY ADJUSTMENT PERCENTAGE CALCULATION

For tread life warranty, calculate the miles received divided by the warranty level, then subtract 1. This will give you percentage credit due to customer.

Use the chart and data below to calculate the credit due to customers presenting tires for workmanship / materials warranty claim consideration. The chart is based on a standard wear-out depth of 2/32" (1.6mm), when the wear bars appear, and the legal wear limit in most states.

**Charge the customer the replacement tire price minus the percentage shown below.** The percentages have been rounded to the nearest whole number. If you wish, the exact percentage can be calculated using the following formula:

$$ADJ\% = (\text{measured tread depth} - 2/32) \text{ divided by } (\text{original depth} - 2/32)$$

Example: A tire with original depth of 11/32" is worn to 6/32" remaining.  
 The calculation is: (6-2) / (11-2) = 4 / 9 = 0.444, or 44.4% (chart shows 45%)

### Adjustment Percentage Due to Customer at 2/32" (1.6mm) wear-out.

Original Depth (in)	Measured Depth Remaining in Tire Grooves (in)																		
	20/32	19/32	18/32	17/32	16/32	15/32	14/32	13/32	12/32	11/32	10/32	9/32	8/32	7/32	6/32	5/32	4/32	3/32	2/32
20/32	100%	100%	100%	83%	77%	72%	66%	61%	55%	50%	44%	38%	33%	28%	22%	16%	11%	5%	0%
19/32		100%	100%	100%	82%	76%	71%	65%	59%	53%	47%	41%	35%	29%	24%	18%	12%	6%	0%
18/32			100%	100%	100%	81%	75%	69%	63%	56%	50%	44%	33%	31%	25%	19%	13%	6%	0%
17/32				100%	100%	100%	80%	73%	67%	60%	53%	47%	40%	33%	27%	20%	13%	7%	0%
16/32					100%	100%	100%	79%	72%	64%	57%	50%	43%	36%	29%	21%	14%	7%	0%
15/32						100%	100%	100%	77%	69%	62%	54%	46%	39%	31%	23%	15%	8%	0%
14/32							100%	100%	100%	75%	67%	58%	50%	42%	33%	25%	17%	8%	0%
13/32								100%	100%	100%	73%	64%	55%	46%	36%	27%	18%	9%	0%
12/32									100%	100%	100%	70%	60%	50%	40%	30%	20%	10%	0%
11/32										100%	100%	100%	67%	56%	45%	33%	22%	11%	0%
10/32											100%	100%	100%	63%	50%	38%	25%	13%	0%
9/32												100%	100%	100%	57%	43%	29%	14%	0%

## WARRANTY ADJUSTMENT POLICY AND PROCEDURES (CONTINUED)

Effective March 1, 2017

Dealers in each region must ship warranty adjustment tires to:

### WESTERN REGION:

WA, OR, CA, AZ, ID, NV, UT, MT, WY

### MIDWEST/NORTH EASTERN REGION:

ND, SD, NE, MN, IA, MO, WI, IL, MI, IN, KY, TN, OH, WV, NC, SC, VA, PA, MD, DE, NJ, CT, NY, MA, RI, VT, NH, ME

### SOUTHERN REGION:

CO, NM, TX, KS, OK, AR, LA, MS, AL, GA, FL

Falken Tires California Warehouse  
 13649 Valley Boulevard  
 Fontana, CA 92335  
 800-723-2553 ext 3, then press option 1

Falken Tires Chicago Warehouse  
 Rock Run Business Park  
 1515 Rock Creek Boulevard  
 Joliet, IL 60431  
 800-723-2553 ext 3, then press option 2

Falken Tires Texas Warehouse  
 720 Commerce Park Drive  
 Grand Prairie, TX 75050  
 800-723-2553 ext 3, then press option 4

Warranty adjustment returns from dealers located outside the continental United States may contact 800-723-2553 for specific FTC adjustment processing policy and procedures.

### Tread Life Warranty Claim Documentation Requirements:

TO RECEIVE PROPER CREDIT FOR ADJUSTMENTS BASED ON PUBLISHED FALKEN TREAD LIFE WARRANTIES, ALL REQUIRED SUPPORTING DOCUMENTATION (I.E., COMPLETED WARRANTY PAMPHLETS AND TIRE ROTATION SERVICE RECORDS) MUST BE SUBMITTED WITH CLAIM FORMS. CLAIMS RECEIVED WITHOUT DOCUMENTATION MAY BE DEEMED AS NON-ADJUSTABLE AND MAY NOT BE PROCESSED FOR ADJUSTMENT CREDIT.

### How Credits Are Calculated:

Warranted failure adjustments credits are prorated based on the amount of usable tread depth remaining on the tire. Tires are deemed worn out at the appearance of the treadwear bars across grooves, at 2/32" (1.6mm) remaining tread depth and no credit will be issued thereafter.

Tread life warranty adjustment credits are prorated based on the percentage of unachieved miles divided by the particular model warranted miles.

Prorated credit percentage is then calculated based on the dealer's current buying price in our system.

### Non-Uniformity Claim Adjustments:

Non-uniformity, including out-of-round, or out-of-balance adjustments will only be accepted during the first 1/32" (0.8mm) treadwear. A claim for non-uniformity for a set of four (4) tires from the same vehicle will not be accepted.

### What is Not Considered for Adjustment:

Tires will not be accepted for adjustment credit if they have been previously repaired, have sustained irregular wear due to improper inflation, misalignment, improper vehicle application, have sustained operational abuse, or have been damaged during mounting or demounting.

### Non-Adjustable Tire Notification and Returns:

Dealers will be notified in writing of those tires that have been inspected and are not considered for adjustment. Due to limited scrap tire storage space, non-adjustable tires will be destroyed 20 days from the date of dealer notification, unless the dealer had made prior disposition arrangements. Tires requested by the dealer to be returned will be shipped back at dealer expense.

### FREE TRIAL RIDE PROGRAM

If for any reason you are not satisfied with your new set of four eligible FALKEN tires within 30 days or 1,000 miles from date of purchase you may return them to the original place of purchase for a full reimbursement (limited to the purchase price of the tires). Please see your FALKEN Dealer for full details.

### ADDITIONAL SAFETY WARNINGS

**Tire Mix Usage:** Never mix tires of different size or construction and/or type on an axle, except for temporary use as a spare tire. Always refer to vehicle owner's manual for proper tire fitments.

**Winter Tires:** FALKEN recommends all four tires be replaced when installing snow tires. Never use just two snow tires – It could lead to adverse handling or loss of control, which could cause serious injury or death.

**Speed Rating:** The speed capability of the replacement tire(s) must always equal or exceed the original equipment tires. FALKEN does not recommend the use of mixing different speed ratings on a vehicle. This can cause poor handling and unpredictable steering. If the tire(s) have been repaired, damaged, or modified from its original condition, then the tire(s) should be treated as a non-speed rated tire.

**Tire Repairs:** If the interior of the tire, inside and/or outside sidewall are compromised from driving on the flat or underinflated tire for too long, the tire should be replaced. If the tire is deemed repairable after dismounting and inspection of interior is performed, it should be repaired with a plug and patch or plug/patch combination to correctly repair the tire. Never use a rope type plug, as this does not correctly seal the tire, and may lead to tire failure.

**For Winter Tires:** It is acceptable to use winter tires with a lower speed rating than the OE tires, but the vehicle maximum speed must be reduced to correspond with the new tires speed rating. FALKEN recommends reducing driving speed when driving in adverse weather conditions.

**Tire Load:** The load carrying capacity of the replacement tire(s) must always equal or exceed the carrying capacity of the original equipment tires. When changing tire sizes – commonly called "Plus Sizing" – please consult the vehicle's tire information placard for original load carrying capacity and air pressures. Always ensure that the replacement tires' load capacity is equal to or above the original tire to ensure safe operation.

**Tire Aging:** FALKEN recommends tires which have been in use for 6 years or more should be inspected regularly by a qualified tire specialist. Plus any tire that is 10 years or older from the date of manufacture, including spare tires should be replaced with new tires regardless of appearance, even if the tires have not reached the legal wear out limit.

**Tire Inflation / Overloading:** Serious injury or death may result from tire underinflation or overloading. Follow owner's manual and the vehicle's tire information placard for proper inflation pressures and load carrying capacities. Never exceed tire maximum air pressure as listed on tire's sidewall.

**Tire Overall Diameter:** If you choose a replacement tire that exceeds the vehicle design criteria range for tire diameter, you may be changing the original handling characteristics of the vehicle. In some cases, vehicle systems such as brakes, suspensions and alignment may be affected. On sport utility vehicles (SUV) and light trucks, any increase in tire overall diameter, and the lifting of vehicle suspension to accommodate the larger size, may result in changes of vehicle ride height and resultant changes in rollover characteristics, braking distances, and handling. You must ensure any tire size and suspension changes allow for safe operating control under all driving conditions.

**“STANDARD” TIRE SPECIFICATION LOAD (lbs.) AND INFLATION (PSI) TABLE**  
Based on ETRTO Data

Load Index	Air Pressure (PSI)										
	26	27	28	29	30	31	32	33	34	35	36
80	761	778	794	827	860	882	904	926	948	970	992
81	783	800	816	849	882	904	926	948	972	995	1,019
82	805	822	838	877	915	937	959	981	1,003	1,025	1,047
83	827	844	860	899	937	959	981	1,003	1,036	1,069	1,074
84	849	866	882	921	959	985	1,010	1,036	1,058	1,080	1,102
85	871	893	915	954	992	1,014	1,036	1,058	1,084	1,109	1,135
86	904	921	937	976	1,014	1,040	1,065	1,091	1,117	1,142	1,168
87	926	948	970	1,009	1,047	1,073	1,098	1,124	1,150	1,175	1,201
88	948	970	992	1,031	1,069	1,098	1,128	1,157	1,183	1,209	1,235
89	982	1,004	1,025	1,069	1,113	1,143	1,172	1,202	1,228	1,253	1,279
90	1,014	1,036	1,058	1,102	1,146	1,176	1,205	1,235	1,264	1,294	1,323
91	1,047	1,069	1,091	1,135	1,179	1,209	1,238	1,268	1,297	1,327	1,356
92	1,069	1,091	1,113	1,163	1,213	1,242	1,272	1,301	1,330	1,360	1,389
93	1,102	1,124	1,146	1,196	1,246	1,279	1,312	1,345	1,374	1,404	1,433
94	1,135	1,163	1,190	1,240	1,290	1,319	1,349	1,378	1,411	1,444	1,477
95	1,168	1,196	1,224	1,274	1,323	1,356	1,389	1,422	1,455	1,488	1,521
96	1,202	1,230	1,257	1,312	1,367	1,400	1,433	1,466	1,499	1,532	1,565
97	1,235	1,263	1,290	1,345	1,400	1,437	1,473	1,510	1,543	1,576	1,609
98	1,268	1,296	1,323	1,378	1,433	1,470	1,506	1,543	1,580	1,616	1,653
99	1,312	1,340	1,367	1,428	1,488	1,525	1,561	1,598	1,635	1,672	1,709
100	1,356	1,384	1,411	1,472	1,532	1,572	1,613	1,653	1,690	1,727	1,764
101	1,400	1,428	1,455	1,521	1,587	1,624	1,661	1,698	1,738	1,779	1,819
102	1,444	1,472	1,499	1,565	1,631	1,672	1,712	1,753	1,793	1,834	1,874
103	1,488	1,521	1,554	1,615	1,676	1,720	1,764	1,808	1,848	1,889	1,929
104	1,521	1,560	1,598	1,665	1,731	1,771	1,812	1,852	1,896	1,940	1,984
105	1,565	1,604	1,642	1,709	1,775	1,819	1,863	1,907	1,951	1,995	2,039
106	1,609	1,648	1,687	1,753	1,819	1,867	1,914	1,962	2,006	2,050	2,094
107	1,653	1,692	1,731	1,803	1,874	1,918	1,962	2,006	2,054	2,101	2,149
108	1,698	1,737	1,775	1,847	1,918	1,966	2,013	2,061	2,109	2,156	2,204
109	1,742	1,781	1,819	1,896	1,973	2,024	2,076	2,127	2,175	2,223	2,271
110	1,797	1,836	1,874	1,951	2,028	2,079	2,131	2,182	2,234	2,285	2,337
111	1,852	1,891	1,929	2,012	2,094	2,146	2,197	2,249	2,300	2,352	2,403
112	1,896	1,940	1,984	2,067	2,149	2,204	2,260	2,315	2,366	2,418	2,469
113	1,951	1,995	2,039	2,122	2,204	2,259	2,315	2,370	2,425	2,480	2,535
114	1,995	2,039	2,083	2,172	2,260	2,319	2,377	2,436	2,491	2,546	2,601
115	2,061	2,105	2,149	2,238	2,326	2,385	2,443	2,502	2,561	2,619	2,678
116	2,116	2,166	2,216	2,304	2,392	2,454	2,517	2,579	2,638	2,696	2,755
117	2,182	2,227	2,271	2,370	2,469	2,528	2,586	2,645	2,708	2,770	2,833
118	2,238	2,288	2,337	2,436	2,535	2,597	2,660	2,722	2,785	2,847	2,910
119	2,304	2,354	2,403	2,508	2,612	2,675	2,737	2,800	2,866	2,932	2,998
120	2,370	2,425	2,480	2,585	2,689	2,755	2,822	2,888	2,954	3,020	3,086

**“EXTRA LOAD” TIRE SPECIFICATION LOAD (lbs.) AND INFLATION (PSI) TABLE**  
Based on ETRTO Data

Load Index	Air Pressure (PSI)																
	26	27	28	29	30	31	32	33	34	35	36	37	38	39	40	41	42
80	670	691	717	738	760	785	796	818	829	853	876	887	911	935	955	979	992
81	692	713	739	760	771	797	818	840	851	876	897	919	944	969	977	1,002	1,019
82	713	734	762	782	793	819	840	861	883	909	919	941	966	992	999	1,024	1,047
83	735	745	773	793	814	841	862	882	904	931	941	963	989	1,015	1,031	1,057	1,074
84	749	766	782	816	849	871	893	915	937	959	981	999	1,018	1,036	1,058	1,080	1,102
85	771	788	805	849	882	904	926	948	966	985	1,003	1,025	1,047	1,069	1,091	1,114	1,136
86	793	816	838	871	904	926	948	970	992	1,014	1,036	1,058	1,080	1,102	1,124	1,147	1,169
87	816	838	860	893	926	952	977	1,003	1,025	1,047	1,069	1,091	1,114	1,136	1,158	1,180	1,202
88	838	860	882	915	959	981	1,003	1,025	1,047	1,069	1,091	1,117	1,143	1,169	1,191	1,213	1,235
89	849	882	915	948	992	1,014	1,036	1,058	1,084	1,110	1,136	1,162	1,187	1,213	1,235	1,257	1,279
90	904	926	948	981	1,025	1,051	1,076	1,102	1,128	1,154	1,180	1,202	1,224	1,246	1,272	1,297	1,323
91	926	948	970	1,003	1,047	1,073	1,099	1,125	1,151	1,176	1,202	1,228	1,253	1,279	1,305	1,330	1,356
92	948	970	992	1,036	1,069	1,099	1,128	1,158	1,184	1,209	1,235	1,261	1,286	1,312	1,338	1,363	1,389
93	981	1,003	1,025	1,069	1,102	1,132	1,161	1,191	1,217	1,242	1,268	1,297	1,327	1,356	1,382	1,407	1,433
94	1,003	1,031	1,058	1,102	1,147	1,173	1,198	1,224	1,253	1,283	1,312	1,341	1,371	1,400	1,426	1,451	1,477
95	1,036	1,058	1,080	1,136	1,180	1,209	1,239	1,268	1,297	1,327	1,356	1,382	1,407	1,433	1,462	1,492	1,521
96	1,069	1,091	1,113	1,157	1,213	1,242	1,272	1,301	1,330	1,360	1,389	1,418	1,448	1,477	1,506	1,536	1,565
97	1,102	1,124	1,146	1,190	1,246	1,275	1,305	1,334	1,367	1,400	1,433	1,462	1,492	1,521	1,550	1,580	1,609
98	1,124	1,152	1,179	1,223	1,279	1,312	1,345	1,378	1,407	1,437	1,466	1,499	1,532	1,565	1,594	1,624	1,653
99	1,168	1,196	1,223	1,267	1,323	1,356	1,389	1,422	1,455	1,488	1,521	1,550	1,580	1,609	1,642	1,676	1,709
100	1,201	1,229	1,256	1,311	1,367	1,400	1,433	1,466	1,499	1,532	1,565	1,598	1,632	1,665	1,698	1,731	1,764
101	1,245	1,273	1,300	1,356	1,400	1,437	1,473	1,510	1,547	1,583	1,620	1,653	1,687	1,720	1,753	1,786	1,819
102	1,278	1,306	1,333	1,389	1,444	1,481	1,517	1,554	1,591	1,628	1,665	1,702	1,738	1,775	1,808	1,841	1,874
103	1,311	1,345	1,378	1,433	1,488	1,525	1,561	1,598	1,635	1,672	1,709	1,746	1,782	1,819	1,856	1,892	1,929
104	1,356	1,384	1,411	1,477	1,532	1,572	1,613	1,653	1,690	1,727	1,764	1,801	1,837	1,874	1,911	1,947	1,984
105	1,389	1,411	1,433	1,510	1,576	1,617	1,657	1,698	1,735	1,772	1,809	1,849	1,889	1,929	1,966	2,002	2,039
106	1,433	1,461	1,488	1,554	1,620	1,661	1,701	1,742	1,782	1,823	1,863	1,900	1,936	1,973	2,013	2,054	2,094
107	1,466	1,499	1,532	1,598	1,665	1,705	1,746	1,786	1,826	1,867	1,907	1,947	1,988	2,028	2,068	2,109	2,149
108	1,510	1,543	1,576	1,642	1,698	1,742	1,786	1,830	1,874	1,918	1,962	2,002	2,043	2,083	2,123	2,164	2,204
109	1,554	1,587	1,620	1,686	1,753	1,797	1,841	1,885	1,929	1,973	2,017	2,061	2,105	2,149	2,190	2,230	2,271
110	1,598	1,631	1,664	1,730	1,808	1,852	1,896	1,940	1,984	2,028	2,072	2,116	2,160	2,204	2,248	2,293	2,337
111	1,642	1,675	1,708	1,785	1,852	1,900	1,947	1,995	2,043	2,090	2,138	2,182	2,227	2,271	2,315	2,359	2,403
112	1,686	1,725	1,763	1,829	1,907	1,955	2,002	2,050	2,098	2,145	2,193	2,241	2,289	2,337	2,381	2,425	2,469
113	1,730	1,769	1,807	1,884	1,962	2,010	2,057	2,105	2,153	2,201	2,249	2,297	2,344	2,392	2,440	2,487	2,535
114	1,774	1,813	1,851	1,929	2,006	2,057	2,109	2,160	2,212	2,263	2,315	2,363	2,410	2,458	2,506	2,553	2,601
115	1,829	1,868	1,907	1,995	2,072	2,124	2,175	2,227	2,278	2,330	2,381	2,429	2,476	2,524	2,575	2,627	2,678
116	1,884	1,923	1,962	2,050	2,127	2,183	2,238	2,293	2,344	2,396	2,447	2,498	2,550	2,601	2,652	2,704	2,755
117	1,929	1,973	2,017	2,105	2,193	2,245	2,296	2,348	2,403	2,458	2,513	2,568	2,623	2,678	2,730	2,781	2,833
118	1,984	2,028	2,072	2,160	2,249	2,304	2,359	2,414	2,469	2,524	2,579	2,634	2,689	2,744	2,799	2,855	2,910
119	2,050	2,094	2,138	2,226													



Wheel Dia.	Series	Size	AZENIS			ZIEX	SINCERA	WINTER	
			AZENIS FK450 A/S	AZENIS FK510	AZENIS RT615K+	ZIEX ZE950 A/S	SINCERA SN250 A/S	ESPIA EPZ II	EUROWINTER HS449
13"	70	175/70R13							82T SL
	60	185/60R14					82H SL		82T SL
	60	195/60R14			86H SL				
14"	65	175/65R14					82T SL	86T XL	82T SL
	65	185/65R14					86T SL	90T XL	86T SL
	70	175/70R14							88T XL
	70	185/70R14					88T SL		
	70	195/70R14					91T SL		
15"	50	195/50R15					82H SL		
	50	205/50R15			89W XL				
	55	185/55R15					82V SL		82H SL
	55	195/55R15					85V SL		85H SL
	60	185/60R15					84H SL	84T SL	88T XL
	60	195/60R15					88H SL	88T SL	92T XL
	60	205/60R15					91H SL	91T SL	
	60	215/60R15					94H SL	94T SL	
	65	175/65R15					84H SL	84T SL	88T XL
	65	185/65R15					88H SL	88T SL	92T XL
	65	195/65R15					91H SL	91T SL	95T XL
	65	205/65R15					99H XL; 99W XL	99T XL	99T XL
	65	215/65R15					96H SL	96T SL	94T SL
	70	205/70R15						96T SL	
	70	215/70R15						98T SL	98T SL
	75	235/75R15						100T SL	
	16"	40	205/40R16			83W XL			
45		205/45R16				87V XL			
45		215/45R16			86W SL				
50		195/50R16				84V SL			
50		205/50R16	87W SL			87V SL	87T SL		91H XL
50		225/50R16	92W SL		92W SL	96V XL			
50		245/50R16				97H SL			
55		185/55R16				83H SL	83T SL		
55		195/55R16	87V SL (RUNFLAT)			87V SL	87T SL		87H SL
55		205/55R16	91W SL			94H XL; 94W XL	91H SL; 91T SL	94T XL	91H SL
55		215/55R16	97W XL			97V XL	97H XL		93H SL; 97H XL
55		225/55R16	95W SL			95V SL	95V SL		95H SL
60		205/60R16				92V SL	92H SL	96T XL	96H XL
60		215/60R16				95H SL; 99V XL	95T SL; 95V SL	99T XL	99H XL
60		225/60R16				98V SL	98T SL	102T XL	102V XL
60		235/60R16				100W SL	100H SL		100H SL
65		205/65R16				95V SL	95H SL	95T SL	95H SL
65		215/65R16				98H SL	98T SL	98T SL	98H SL
65		225/65R16				100H SL	100T SL	100T SL	100T SL
65		235/65R16				103H SL	103T SL		
70		215/70R16					100T SL		
70	225/70R16					103T SL			
70	235/70R16					106T SL			
17"	40	205/40R17			84W XL	84W XL			
	40	215/40R17			87W XL				
	40	235/40R17			90W SL				
	40	245/40R17	91W SL	95Y XL		95W XL			
	40	255/40R17	94Y SL		94W SL	94W SL			
	40	275/40R17			98W SL				
	45	205/45R17	88W XL			88W XL			
	45	215/45R17	91W XL	91Y XL	87W SL	91W XL	87V SL		91V XL
	45	225/45R17	91W SL (RUN-FLAT)   94W XL	94Y XL	94W XL	94W XL	94V XL	94T XL	94V XL
	45	235/45R17	97W XL	97Y XL		94W SL			97V XL
	45	245/45R17	99Y XL	99Y XL	99W XL	99W XL			99V XL
	50	205/50R17	93W XL			93W XL	93V XL		93V XL
	50	215/50R17	95W XL			91W SL	95V XL		95V XL
	50	225/50R17	98W XL			94W SL	98V XL	98T XL	98V XL
	50	235/50R17	96W SL			96W SL			
	50	245/50R17	99W SL			99W SL			
	55	215/55R17	94W SL			94V SL; 94W SL	94T SL; 94V SL	98T XL	98V XL
	55	225/55R17	97W SL			101W XL	97V SL	101T XL	101V XL
	55	235/55R17	99W SL			99W SL	99T SL	99T SL	103V XL
	60	215/60R17				96H SL	96T SL		96H SL
	60	225/60R17				99V SL	99T SL		99H SL
	60	235/60R17				102H SL	102T SL		102H SL
	60	265/60R17				108V SL			
	65	215/65R17				99H SL	99T SL		
	65	225/65R17				102H SL	102T SL		102H SL
	65	235/65R17				108V XL	104T SL		108H XL

Wheel Dia.	Series	Size	AZENIS			ZIEX	SINCERA	WINTER	
			AZENIS FK450 A/S	AZENIS FK510	AZENIS RT615K+	ZIEX ZE950 A/S	SINCERA SN250 A/S	ESPIA EPZ II	EUROWINTER HS449
18"	30	315/30R18			98W SL				
	35	215/35R18					84W XL		
	35	245/35R18		92Y XL					
	35	255/35R18	94Y XL	94(Y) XL			94W XL		
	35	265/35R18	97Y XL	97(Y) XL	97W XL		97W XL		
	35	275/35R18		99(Y) XL	95W SL		99W XL		
	40	215/40R18					89W XL		
	40	225/40R18	92Y XL	92(Y) XL	92W XL		92W XL	92T XL	92V XL
	40	235/40R18	95Y XL	95(Y) XL	95W XL		95W XL		
	40	245/40R18	97Y XL	97Y XL	97W XL		97W XL		97V XL
	40	255/40R18	99Y XL	99(Y) XL	95W SL		99W XL		
	40	275/40R18		99Y SL					
	40	295/40R18			103W SL				
	45	215/45R18	93W XL				93W XL		
	45	225/45R18	95Y XL	95(Y) XL			95W XL	95V XL	95T XL
	45	235/45R18	98W XL				94W SL	94V SL	98V XL
	45	245/45R18	100Y XL	100(Y) XL			100W XL		100V XL
	45	255/45R18					103W XL		103V XL
	50	225/50R18	95W SL				95W SL	95T SL	
	50	235/50R18	97W SL				101W XL	97V SL	101T XL
	50	245/50R18	100W SL						104V XL
	55	215/55R18					95H SL	95T SL	
	55	225/55R18					98V SL	98T SL	98V SL
	55	235/55R18	100W SL				104V XL	100V SL	104H XL
	55	245/55R18	103W SL				103W SL		
	55	255/55R18					109W XL		
	60	225/60R18					100V SL	100H SL	100H SL
	60	235/60R18					107V XL		107H XL
	60	245/60R18					105H SL		
	60	265/60R18					110V SL		110V SL
65	235/65R18					106H SL			
65	255/65R18					111H SL			
19"	30	255/30R19		91(Y) XL					
	30	295/30R19		100Y XL					
	35	225/35R19		88(Y) XL					
	35	235/35R19		91(Y) XL					
	35	245/35R19		93(Y) XL					
	35	255/35R19	96Y XL	96(Y) XL			96W XL		
	35	275/35R19	100Y XL	100(Y) XL					
	35	285/35R19	99Y SL	103(Y) XL					
	40	225/40R19					93W XL		
	40	235/40R19							
	40	245/40R19	98Y XL   98Y XL (RUNFLAT)	98(Y) XL			94W SL		
	40	255/40R19	100Y XL	100(Y) XL			100W XL		
	40	275/40R19		105(Y) XL			101W SL		
	45	225/45R19	96Y XL	96Y XL					92V SL
	45	245/45R19	102Y XL	102(Y) XL			98W SL		
	45	255/45R19	104Y XL				100V SL		
	50	255/50R19					107V XL		107V XL
	55	225/55R19					99W SL		
55	235/55R19					105W XL		105V XL	
55	245/55R19					103H SL			
60	255/60R19					109H SL			
20"	30	245/30R20		90(Y) XL					
	30	255/30R20		92(Y) XL					
	30	275/30R20		97(Y) XL					
	30	285/30R20		99(Y) XL					
	30	295/30R20		101(Y) XL					
	35	245/35R20	95Y XL	95(Y) XL					
	35	255/35R20	97Y XL	97(Y) XL			97W XL		
	35	275/35R20		102(Y) XL			102W XL		
	35	285/35R20		104(Y) XL					
	40	245/40R20		99(Y) XL			99W XL		
	40	255/40R20		101(Y) XL					
	40	275/40R20		106Y XL			106W XL		
	45	245/45R20	103Y XL	103Y XL			103W XL		
	45	255/45R20	101Y SL	105Y XL			105W XL		
	45	275/45R20							106V SL
50	245/50R20					102V SL			
55	235/55R20					102H SL			
21"	35	245/35R21		96(Y) XL					
	35	265/35R21		101(Y) XL					





WILDPEAK

WILDPEAK  
SECURITY PWR

**FALKEN**  
TIRES



**OFFICIAL TIRE OF MAJOR LEAGUE BASEBALL**

Major League Baseball trademarks and copyrights are used with permission of Major League Baseball Properties, Inc. Visit MLB.com

[www.falkentire.com](http://www.falkentire.com) | 800.723.2553