

POWER KING[®]

ON-HIGHWAY TIRES **2018**



POWER KING®

IN IT FOR THE LONG HAUL

ON-HIGHWAY TIRES 2018

ON-HIGHWAY TIRES

TABLE OF CONTENTS

TRAILER		
ALL STEEL ST TRAILER	SAILUN 637T	3
	ADVANCE GL285T	3
	ADVANCE GL283A	3
	TRAILER KING ULTRA STR	4
PREMIUM ST RADIAL	POWER KING TOWMAX STR II	4
VALUE ST RADIAL	TRAILER KING II	5
HIGHWAY ST RADIAL	POWER KING HD RADIAL TRAILER	5
	POWER KING RADIAL F/P	6
ST BIAS	POWER KING PREMIUM TRAILER HD	6
	POWER KING PREMIUM TRAILER	7
HIGHWAY BIAS	POWER KING BOAT TRAILER	7
	POWER KING BOAT TRAILER II	7
LOW PLATFORM TRAILER	POWER KING LOW BOY HD	8
	POWER KING LOW BOY	8
	SOLID TRAC	8
BIAS LIGHT TRUCK		
BIAS HIGHWAY	POWER KING SUPER HIGHWAY II	9
BIAS TRACTION	POWER KING SUPER TRACTION LT	9
	POWER KING EXTRA TRACTION	9
MEDIUM RADIAL TRUCK		
REGIONAL ALL - POSITION	ADVANCE GL274A	10
ALL-POSITION - TRAILER	ADVANCE GL283A	10
ALL-POSITION - LOW PLATFORM TRAILER	POWER KING TR-615	10
MEDIUM BIAS TRUCK		
ALL-POSITION	POWER KING SUPER HIGHWAY HD	11
TRAILER	POWER KING SUPER HIGHWAY TRAILER	11
	POWER KING LPT II	11
CROSS BAR	POWER KING CROSS BAR HD	12
TRACTION	POWER KING SUPER TRACTION HD	12

powerkingtires.com • tbcbrands.com • treadxpress.com • 1-866-822-4968

Every effort has been made to verify the accuracy of the listed specifications. TBC Corporation and TBC Brands cannot be held responsible for any discrepancies, and as such, the information should be considered as approximate.

ON-HIGHWAY TIRES

TRAILER



BIAS LIGHT TRUCK



MEDIUM RADIAL TRUCK



MEDIUM BIAS TRUCK



ALL STEEL ST TRAILER

SAILUN S637T

- All steel construction for maximum strength and load capacity
- Multi-sipes improve traction in wet conditions and dissipate heat for prolonged tread life
- Five-rib design for improved stability
- Solid shoulder to resist irregular wear and improve fuel efficiency



ARTICLE NO.	TIRE SIZE	LR/PR	LOAD INDEX	SPEED SYMBOL	TREAD DEPTH (32NDS)	TYPE	RIM WIDTH (INCH)	OVERALL DIAMETER	SECTION WIDTH (INCH)	WGT	MAX. RATED LOAD @ PSI	
											SINGLE	DUAL
5541960*	ST235/80R16	G/14	129/125	L	10	TL	6.50	30.8	9.3	55	4080@110	3640@110
5540993*	ST235/85R16	G/14	132/127	L	12	TL	6.50	31.8	9.3	61	4400@110	3860@110

*Requires special high-load capacity wheel. Consult wheel manufacturer for proper application.

ALL STEEL ST TRAILER

ADVANCE GL285T

- All steel construction
- Specialized tread compound for superb wear at highway speeds
- Tread pattern provides excellent drainage and slip resistance



ARTICLE NO.	TIRE SIZE	LR/PR	LOAD INDEX	SPEED SYMBOL	TREAD DEPTH (32NDS)	TYPE	RIM WIDTH (INCH)	OVERALL DIAMETER	SECTION WIDTH (INCH)	WGT	MAX. RATED LOAD @ PSI	
											SINGLE	DUAL
88147G*	ST235/80R16	G/14	129/125	L	11	TL	6.50	31.1	9.3	61	4080@110	3640@110
88142G*	ST235/85R16	G/14	132/127	L	11	TL	6.50	31.7	9.3	61	4400@110	3860@110

*Requires special high-load capacity wheel. Consult wheel manufacturer for proper application.

ALL STEEL ST TRAILER

ADVANCE GL283A

- All steel construction
- Dual compound tread with heat resistant material for long-distance hauling
- Specialized bead toe for improved durability
- Reinforced shoulder for even wear



ARTICLE NO.	TIRE SIZE	LR/PR	LOAD INDEX	SPEED SYMBOL	TREAD DEPTH (32NDS)	TYPE	RIM WIDTH (INCH)	OVERALL DIAMETER	SECTION WIDTH (INCH)	WGT	MAX. RATED LOAD @ PSI	
											SINGLE	DUAL
88161G*	ST225/90R16	G/14	129/124	L	18	TL	6.00	31.7	8.5	67	4080@120	3520@120

*Requires special high-load capacity wheel. Consult wheel manufacturer for proper application.
Replaces conventional size 7.50R16LT LR-G.

ALL STEEL ST TRAILER

TRAILER KING ULTRA STR

- Five-rib, four-groove pattern with 12/32nds of tread depth
- Stone ejectors minimize stone retention and protect the casing
- Cross rib sipes enhance traction in wet/dry conditions
- All steel construction



ARTICLE NO.	TIRE SIZE	LR/PR	LOAD INDEX	SPEED SYMBOL	TREAD DEPTH (32NDS)	TYPE	RIM WIDTH (INCH)	OVERALL DIAMETER	SECTION WIDTH (INCH)	WGT	MAX. RATED LOAD @ PSI	
											SINGLE	DUAL
TKAS25G*	ST235/80R16	G/14	129/125	L	12	TL	6.50	30.8	9.3	56	4080@110	3640@110
TKAS18G*	ST235/85R16	G/14	132/127	L	12	TL	6.50	31.7	9.3	58	4400@110	3860@110

*Requires special high-load capacity wheel. Consult wheel manufacturer for proper application.

PREMIUM ST RADIAL

TOWMAX STR II

- Optimized tread compound for improved rolling resistance
- Computer-designed tire profile to improve resistance to heat build-up
- Nylon overlays on 15" and 16" sizes for superior strength and durability
- Nationwide limited warranty
- 2-year nationwide roadside assistance program



ARTICLE NO.	TIRE SIZE	LR/PR	LOAD INDEX	SPEED SYMBOL	TREAD DEPTH (32NDS)	TYPE	RIM WIDTH (INCH)	OVERALL DIAMETER	SECTION WIDTH (INCH)	WGT	MAX. RATED LOAD @ PSI	
											SINGLE	DUAL
MAX13T	ST175/80R13	C/6	91/87	L	9	TL	5.00	24.0	6.9	16	1360@50	1200@50
MAX15T	ST185/80R13	C/6	94/89	L	9	TL	5.00	24.7	7.3	17	1480@50	1280@50
MAX36T	ST205/75R14	C/6	100/96	L	10	TL	5.50	26.1	7.7	20	1760@50	1570@50
MAX37T	ST205/75R14	D/8	105/101	L	10	TL	5.50	26.1	7.7	21	2040@65	1820@65
MAX38T	ST215/75R14	C/6	102/98	L	10	TL	6.00	26.7	8.4	22	1870@50	1650@50
MAX48T	ST205/75R15	C/6	101/97	L	10	TL	5.50	27.1	7.7	22	1820@50	1610@50
MAX49T	ST205/75R15	D/8	107/102	L	10	TL	5.50	27.1	7.8	23	2150@65	1870@65
MAX51T	ST225/75R15	D/8	113/108	L	10	TL	6.00	28.3	8.8	28	2540@65	2200@65
MAX53T	ST225/75R15	E/10	117/112	L	10	TL	6.00	28.3	8.8	29	2860@80	2490@80
MAX24T	ST235/80R16	E/10	124/120	L	10	TL	6.50	30.7	9.2	34	3520@80	3080@80
MAX25T	ST235/80R16	F/12	127/122	L	10	TL	6.50	30.7	9.2	37	3860@100	3300@100
MAX17T	ST235/85R16	E/10	125/122	L	10	TL	6.50	31.7	9.2	36	3640@80	3305@80
MAX18T	ST235/85R16	F/12	128/124	L	10	TL	6.50	31.7	9.2	37	3960@95	3520@95

Nylon Overlays on 15" and 16" sizes

VALUE ST RADIAL

TRAILER KING II

- Optimized tread compound for improved wear and longer mileage
- Computer-designed tire profile to improve resistance to heat build-up
- Nylon on 15" and 16" sizes for superior strength and durability
- Nationwide limited warranty



ARTICLE NO.	TIRE SIZE	LR/PR	LOAD INDEX	SPEED SYMBOL	TREAD DEPTH (32NDS)	TYPE	RIM WIDTH (INCH)	OVERALL DIAMETER	SECTION WIDTH (INCH)	WGT	MAX. RATED LOAD @ PSI	
											SINGLE	DUAL
TKS13T	ST175/80R13	C/6	91/87	L	9	TL	5.00	24.0	7.0	16	1360@50	1200@50
TKS14T	ST175/80R13	D/8	97/93	L	9	TL	5.00	24.0	6.9	18	1610@65	1430@65
TKS15T	ST185/80R13	C/6	94/89	L	9	TL	6.00	24.6	7.2	17	1480@50	1280@50
TKS16T	ST185/80R13	D/8	99/95	L	9	TL	6.00	24.6	7.2	19	1710@65	1520@65
TKS36T	ST205/75R14	C/6	100/96	L	10	TL	5.50	26.1	8.0	21	1760@50	1570@50
TKS37T	ST205/75R14	D/8	105/101	L	10	TL	5.50	26.1	8.0	22	2040@65	1820@65
TKS38T	ST215/75R14	C/6	102/98	L	10	TL	6.00	26.7	8.5	23	1870@50	1650@50
TKS39T	ST215/75R14	D/8	108/103	L	10	TL	6.00	26.7	8.5	23	2200@65	1930@65
TKS48T	ST205/75R15	C/6	101/97	L	10	TL	5.50	27.1	8.0	22	1820@50	1610@50
TKS49T	ST205/75R15	D/8	107/102	L	10	TL	5.50	27.1	8.0	24	2150@65	1870@65
TKS51T	ST225/75R15	D/8	113/108	L	10	TL	6.00	28.3	8.8	28	2540@65	2200@65
TKS53T	ST225/75R15	E/10	117/112	M	10	TL	6.00	28.3	8.8	29	2860@80	2470@80
TKS24T	ST235/80R16	E/10	124/120	L	10	TL	6.50	30.8	9.3	35	3520@80	3080@80
TKS25T	ST235/80R16	F/12	127/122	M	10	TL	6.50	30.8	9.3	37	3860@100	3300@100
TKS17T	ST235/85R16	E/10	125/122	L	10	TL	6.50	31.7	9.3	37	3640@80	3305@80
TKS18T	ST235/85R16	F/12	128/124	M	10	TL	6.50	31.7	9.3	37	3960@95	3520@95

Nylon Overlays on 15" and 16" sizes

HIGHWAY ST RADIAL

POWER KING HD RADIAL TRAILER

- Polyester cord and steel belt construction for strength and durability
- Five-rib design with center rib for improved stability
- Enhanced groove design improves wet traction
- Nylon overlay for increased heat dissipation



ARTICLE NO.	TIRE SIZE	LR/PR	LOAD INDEX	SPEED SYMBOL	TREAD DEPTH (32NDS)	TYPE	RIM WIDTH (INCH)	OVERALL DIAMETER	SECTION WIDTH (INCH)	WGT	MAX. RATED LOAD @ PSI	
											SINGLE	DUAL
PKH17A	ST235/85R16	F/12	128/124	L	9	TL	6.50	31.8	9.4	39	3960@95	3520@95

HIGHWAY ST RADIAL

POWER KING RADIAL F/P

- Five-rib tread design for uniform wear
- Solid shoulder for improved tire wear
- Center rib for improved stability
- Heavy ply ratings for extra load-carrying capacity
- ST Radial trailer tire



ARTICLE NO.	TIRE SIZE	LR/PR	LOAD INDEX	SPEED SYMBOL	TREAD DEPTH (32NDS)	TYPE	RIM WIDTH (INCH)	OVERALL DIAMETER	SECTION WIDTH (INCH)	WGT	MAX. RATED LOAD @ PSI	
											SINGLE	DUAL
PWST37	ST205/90R15	E/10	118/113	L	12	TL	5.50	29.50	7.90	34	2910@80	2540@80
PWST02	ST225/90R16	F/12	127/123	L	12	TL	6.00	31.80	8.70	45	3860@95	3420@95

Metric ST sizing replaces conventional 7.00R15LT and 7.50R16LT for trailer applications.

ST BIAS

POWER KING PREMIUM TRAILER HD

- Nylon cord construction
- Enhanced groove design improves wet traction



ARTICLE NO.	TIRE SIZE	LR/PR	LOAD INDEX	SPEED SYMBOL	TREAD DEPTH (32NDS)	TYPE	RIM WIDTH (INCH)	OVERALL DIAMETER	SECTION WIDTH (INCH)	WGT	MAX. RATED LOAD @ PSI	
											SINGLE	DUAL
PBT36	ST205/90D15	E/10	118/113	K	14	TL	5.50	29.6	7.9	31	2910@80	2540@80
PBT49	ST225/90D16	E/10	124/120	K	13	TL	6.00	31.8	8.6	37	3520@80	3080@80
ST12023G	ST225/90D16	G/14	129/124	K	13	TL	6.00	31.8	8.6	45	4080@105	3520@105

Metric ST sizing replaces conventional bias 7.00-15LT and 7.50-16LT for trailer applications.

ST BIAS

POWER KING PREMIUM TRAILER

- Designed for towed trailer applications
- Bias ply construction for strength and stability
- Tread design for improved wear



ARTICLE NO.	TIRE SIZE	LR/PR	LOAD INDEX	SPEED SYMBOL	TREAD DEPTH (32NDS)	TYPE	RIM WIDTH (INCH)	OVERALL DIAMETER	SECTION WIDTH (INCH)	WGT	MAX. RATED LOAD @ PSI	
											SINGLE	DUAL
STB13	ST175/80D13	C/6	91/87	L	8	TL	5.00	24.4	24.4	15	1360@50	1200@50
STB36	ST205/75D14	C/6	100/96	L	8	TL	5.50	26.5	26.5	18	1760@50	1570@50
STB48	ST205/75D15	C/6	101/97	L	8	TL	5.50	27.4	27.4	19	1820@50	1610@50
STB51	ST225/75D15	D/8	113/108	L	8	TL	6.00	28.6	28.6	25	2540@65	2200@65

HIGHWAY BIAS

POWER KING BOAT TRAILER

- For use on small to medium-size trailers
- Bias ply construction for extra support and superior handling
- Advanced tubeless design



ARTICLE NO.	TIRE SIZE	LR/PR	LOAD INDEX	SPEED SYMBOL	TREAD DEPTH (32NDS)	TYPE	RIM WIDTH (INCH)	OVERALL DIAMETER (INCH)	SECTION WIDTH (INCH)	WGT	SINGLE MAX. LOAD @ PSI
WDT76	6.90-9	C/6	84	M	9	TL	5.50	20.7	7.0	15	1100@60

HIGHWAY BIAS

POWER KING BOAT TRAILER II

- For use on small to medium-size trailers
- Bias ply construction for extra support and superior handling
- Advanced tubeless design



ARTICLE NO.	TIRE SIZE	LR/PR	LOAD INDEX	SPEED SYMBOL	TREAD DEPTH (32NDS)	TYPE	RIM WIDTH (INCH)	OVERALL DIAMETER (INCH)	SECTION WIDTH (INCH)	WGT	SINGLE MAX. LOAD @ PSI
GVM10	4.80-8	B/4	62	M	6	TL	3.75	16.1	4.6	7	590@60
GVM11	4.80-8	C/6	71	M	6	TL	3.75	17.0	4.7	8	745@90
GVM12	5.70-8	B/4	69	M	7	TL	4.50	17.9	6.1	10	715@50
GVM13	5.70-8	C/6	77	M	7	TL	4.50	17.9	6.1	11	910@75
GVM14	5.70-8	D/8	83	M	7	TL	4.50	18.1	5.4	10	1075@100
GVM30	4.80-12	B/4	72	M	6	TL	3.75	20.8	4.6	10	780@60
GVM31	4.80-12	C/6	80	M	6	TL	3.75	21.0	4.6	10	990@90
GVM34	5.30-12	B/4	74	M	8	TL	4.25	21.7	5.5	11	840@55
GVM35	5.30-12	C/6	82	M	8	TL	4.25	22.0	5.5	12	1045@80

HIGHWAY BIAS

POWER KING BOAT TRAILER II

- For use on small to medium-size trailers
- Bias ply construction for extra support and superior handling
- Advanced tubeless design



ARTICLE NO.	TIRE SIZE	LR/PR	LOAD INDEX	SPEED SYMBOL	TREAD DEPTH (32NDS)	TYPE	RIM WIDTH (INCH)	OVERALL DIAMETER (INCH)	SECTION WIDTH (INCH)	WGT	SINGLE MAX. LOAD @ PSI
GVM16	16.5X6.5-8	C/6	73	M	8	TL	5.38	16.3	6.9	8	795@70
GVM18	18.5X8.5-8	C/6	78	M	8	TL	7.00	18.6	8.4	13	940@50
GVM20	20.5X8-10	C/6	84	M	9	TL	6.00	20.6	8.1	14	1105@50
GVM22	20.5X8-10	D/8	90	M	9	TL	6.00	20.6	8.1	15	1330@70
GVM21	20.5X8-10	E/10	95	M	9	TL	6.00	20.6	8.1	16	1535@90
GVM23	20.5X8-10	F/12	98	M	9	TL	6.00	20.5	8.0	16	1670@105

LOW PLATFORM TRAILER

POWER KING LOW BOY HD

- Premium low platform trailer tire
- Heavy nylon cord for increased strength
- Heavy-duty construction, straight-tracking, easy-rolling trailer tire



ARTICLE NO.	TIRE SIZE	LR/PR	LOAD INDEX	SPEED SYMBOL	TREAD DEPTH (32NDS)	TYPE	RIM WIDTH (INCH)	OUTSIDE DIAMETER (INCH)	SECTION WIDTH (INCH)	WGT	MAX. RATED LOAD @ PSI	
											SINGLE	DUAL
LA29	8-14.5LT	F/12	117/112	F	11	TL	6.00	27.7	8.2	38	2835@100	2470@100
LA31	9-14.5LT	F/12	122/117	F	11	TL	7.00	28.1	9.3	45	3305@100	2835@100

LOW PLATFORM TRAILER

POWER KING LOW BOY

- Dependable, tough nylon cord
- Straight-tracking, easy-rolling trailer tire
- Designed for low bed trailers



ARTICLE NO.	TIRE SIZE	LR/PR	LOAD INDEX	SPEED SYMBOL	TREAD DEPTH (32NDS)	TYPE	RIM WIDTH (INCH)	OUTSIDE DIAMETER (INCH)	SECTION WIDTH (INCH)	WGT	MAX. RATED LOAD @ PSI	
											SINGLE	DUAL
LB27	7-14.5LT	F/12	109/104	F	9	TL	6.00	26.5	7.4	27	2300@100	2020@100
LB29	8-14.5LT	F/12	117/112	F	8	TL	6.00	27.7	8.1	29	2835@100	2740@100

LOW PLATFORM TRAILER

SOLID TRAC

- Nylon cord construction
- Rib tread design for low platform trailers



ARTICLE NO.	TIRE SIZE	LR/PR	LOAD INDEX	SPEED SYMBOL	TREAD DEPTH (32NDS)	TYPE	RIM WIDTH (INCH)	OVERALL DIAMETER (INCH)	SECTION WIDTH (INCH)	WGT	SINGLE MAX. LOAD @ PSI
LDT35A	8-14.5	G/14	119	K	8	TL	6.00	27.8	8.0	27	3035@110

BIAS HIGHWAY

POWER KING SUPER HIGHWAY II

- Long-wearing, all-position premium rib tire
- Nylon cord construction
- Tread design for responsive steering



ARTICLE NO.	TIRE SIZE	LR/PR	LOAD INDEX	SPEED SYMBOL	TREAD DEPTH (32NDS)	TYPE	RIM WIDTH (INCH)	OUTSIDE DIAMETER (INCH)	SECTION WIDTH (INCH)	WGT	MAX. RATED LOAD @ PSI	
											SINGLE	DUAL
WLD29	7.00-14LT	C/6	89/85	L	11	TL	5.50	26.8	7.3	24	1310@50	1155@50
WLD34	6.70-15LT	C/6	95/91	L	11	TL	5.00	28.4	7.5	25	1520@50	1355@50
WLD36	7.00-15LT	D/8	105/101	L	11	TL	5.50	29.5	8.1	31	2040@60	1820@60
WLD32	6.50-16LT	C/6	97/93	L	11	TL	4.50	29.7	7.2	26	1610@50	1435@50
WLD50	7.50-16LT	E/10	116/112	L	12	TL	6.00	32.2	8.4	41	2920@75	2470@75
WLD79	8.00-16LT	E/10	110/105	L	14	TL	6.50	28.5	8.1	40	2040@60	1820@60
WLD75	8.75-16.5LT	E/10	115/111	L	14	TL	6.75	30.1	9.0	37	2680@60	2445@60
WLD89	9.50-16.5LT	E/10	121/117	L	14	TL	6.75	30.7	9.7	42	2780@60	2070@60
WLD27	12-16.5LT	F/12	129/125	L	16	TL	9.75	33.4	12.9	69	4080@75	3640@75

BIAS TRACTION

POWER KING SUPER TRACTION LT

- Strong nylon carcass
- Deep wide-angle shoulder cleats
- Directional tread design for good cleanout
- Built for rough service and pinned for studs



ARTICLE NO.	TIRE SIZE	LR/PR	LOAD INDEX	SPEED SYMBOL	TREAD DEPTH (32NDS)	TYPE	RIM WIDTH (INCH)	OUTSIDE DIAMETER (INCH)	SECTION WIDTH (INCH)	WGT	MAX. RATED LOAD @ PSI	
											SINGLE	DUAL
NR50	9.00-16LT	D/8	119/114	-	20	TL	6.50	35.4	9.9	61	3030@50	2665@50

BIAS TRACTION

POWER KING EXTRA TRACTION

- All-terrain traction
- Deep non-skid tread
- Self-cleaning lug design allows optimum gripping power
- Excellent traction



ARTICLE NO.	TIRE SIZE	LR/PR	LOAD INDEX	SPEED SYMBOL	TREAD DEPTH (32NDS)	TYPE	RIM WIDTH (INCH)	OUTSIDE DIAMETER (INCH)	SECTION WIDTH (INCH)	WGT	MAX. RATED LOAD @ PSI	
											SINGLE	DUAL
AUD36	7.00-15LT	D/8	105/101	L	19	TL	5.50	29.4	7.7	33	2040@60	1800@60
AUD50	7.50-16LT	E/10	116/112	L	20	TL	6.00	32.5	8.4	44	2755@75	2470@75

REGIONAL ALL-POSITION

ADVANCE GL274A

- Four Z-shaped grooves for slip resistance
- Tread pattern optimized to resist irregular wear
- Specialized tread compound designed for improved wear
- Rib pattern for maximum steering stability and even wear



ARTICLE NO.	TIRE SIZE	LR/PR	LOAD INDEX	SPEED SYMBOL	TREAD DEPTH (32NDS)	TYPE	RIM WIDTH (INCH)	OUTSIDE DIAMETER (INCH)	SECTION WIDTH (INCH)	WGT	MAX. RATED LOAD @ PSI	
											SINGLE	DUAL
87400G	9R22.5	G/14	136/134	M	18	TL	6.75	38.3	9.0	83	4940@120	4675@120
87404G	10R22.5	G/14	141/139	M	18	TL	7.50	40.2	10.0	95	5675@115	5360@115

ALL-POSITION TRAILER

ADVANCE GL283A

- Dual compound tread with heat resistant material for long-distance hauling
- Reinforced shoulder for even wear
- Specialized bead toe for improved durability



ARTICLE NO.	TIRE SIZE	LR/PR	LOAD INDEX	SPEED SYMBOL	TREAD DEPTH (32NDS)	TYPE	RIM WIDTH (INCH)	OUTSIDE DIAMETER (INCH)	SECTION WIDTH (INCH)	WGT	MAX. RATED LOAD @ PSI	
											SINGLE	DUAL
88005G	8R19.5	F/12	124/122	L	16	TL	6.00	33.8	8.0	62	3530@110	3315@110

ALL-POSITION - LOW PLATFORM TRAILER

POWER KING TR-615

- Solid shoulder and wide ribs to evenly distribute load
- Deep, wide tread grooves for uniform wear
- Includes tire, tube and flap



ARTICLE NO.	TIRE SIZE	LR/PR	LOAD INDEX	SPEED SYMBOL	TREAD DEPTH (32NDS)	TYPE	RIM WIDTH (INCH)	OUTSIDE DIAMETER (INCH)	SECTION WIDTH (INCH)	WGT	MAX. RATED LOAD @ PSI	
											SINGLE	DUAL
CZ42	8.25R15	J/18	128/128	K	16	TT	6.50	33.3	9.3	72	5080@125	4940@125
CZ62	10.00R15	J/18	141/140	K	17	TT	7.50	36.5	10.9	93	6950@125	6400@125

ALL-POSITION

POWER KING SUPER HIGHWAY HD

- All-position rib
- Nylon cord body plies
- Four circumferential grooves aid in water evacuation
- Deep tread depth for excellent tread life
- Includes flap



ARTICLE NO.	TIRE SIZE	LR/PR	LOAD INDEX	SPEED SYMBOL	TREAD DEPTH (32NDS)	TYPE	RIM WIDTH (INCH)	OUTSIDE DIAMETER (INCH)	SECTION WIDTH (INCH)	WGT	MAX. RATED LOAD @ PSI	
											SINGLE	DUAL
SH720	7.50-20	E/10	125/121	G	15	TT	6.00	36.8	8.4	50	3640@90	3195@80
SH820	8.25-20	G/14	136/132	L	18	TT	6.50	38.3	9.3	71	4940@115	4410@105
SH920	9.00-20	G/14	141/137	L	17	TT	7.00	40.1	10.2	81	5675@110	5070@100
SH1020	10.00-20	H/16	146/142	L	18	TT	7.50	41.5	10.9	93	6610@115	5840@105

TRAILER

POWER KING SUPER HIGHWAY TRAILER

- Five-rib design for trailer applications, including intermodal service
- 14/32" non-skid with regroovable casing
- High load capacity with "G" rating
- Strong bias ply construction for improved strength and stability



ARTICLE NO.	TIRE SIZE	LR/PR	LOAD INDEX	SPEED SYMBOL	TREAD DEPTH (32NDS)	TYPE	RIM WIDTH (INCH)	OUTSIDE DIAMETER (INCH)	SECTION WIDTH (INCH)	WGT	MAX. RATED LOAD @ PSI	
											SINGLE	DUAL
PKT1020*	10.00-20	G/14	144/139	G	14	SET	7.50	41.4	10.9	75	6175@100	5355@90
PKT11225	11-22.5	G/14	144/139	G	14	TL	8.25	41.7	11.3	90	6175@100	5355@90

*Includes Flap and Tube

TRAILER

POWER KING LPT II

- Heavy nylon cord
- Designed for low platform or drop deck trailers
- Solid shoulder and deep tread for long, even wear
- Premium performance at an economical price
- Includes flap



ARTICLE NO.	TIRE SIZE	LR/PR	LOAD INDEX	SPEED SYMBOL	TREAD DEPTH (32NDS)	TYPE	RIM WIDTH (INCH)	OUTSIDE DIAMETER (INCH)	SECTION WIDTH (INCH)	WGT	MAX. RATED LOAD @ PSI	
											SINGLE	DUAL
AQP31	7.50-15	G/14	124/120	L	14	TT	6.00	32.8	9.3	45	3525@120	3085@110
AQP41	8.25-15	H/16	132/127	L	15	TT	6.50	33.0	9.3	55	4410@130	3860@120
AQP50	9.00-15	G/14	135/130	L	15	TT	7.00	34.7	10.6	63	4805@110	4190@100
AQP61	10.00-15	H/16	141/136	L	18	TT	7.50	36.3	11.4	73	5675@115	4940@105

CROSS BAR

POWER KING CROSS BAR HD

- Nylon construction
- Non-directional tread design for traction
- Center rib for improved stability and even load distribution
- Deep tread for excellent tread life
- Includes flap



ARTICLE NO.	TIRE SIZE	LR/PR	LOAD INDEX	SPEED SYMBOL	TREAD DEPTH (32NDS)	TYPE	RIM WIDTH (INCH)	OUTSIDE DIAMETER (INCH)	SECTION WIDTH (INCH)	WGT	MAX. RATED LOAD @ PSI	
											SINGLE	DUAL
PKCB820	8.25-20	G/14	136/132	L	19	TT	6.50	38.3	9.3	73	4940@115	4410@105
PKCB920	9.00-20	G/14	141/137	L	20	TT	7.00	40.1	10.2	83	5675@110	5070@100
PKCB1020	10.00-20	H/16	146/142	L	19	TT	7.50	41.5	10.9	98	6610@115	5840@105

TRACTION

POWER KING SUPER TRACTION HD

- Deep tread depth for excellent tread life
- Self-cleaning lug design for optimum gripping power
- All-terrain traction
- Includes flap



ARTICLE NO.	TIRE SIZE	LR/PR	LOAD INDEX	SPEED SYMBOL	TREAD DEPTH (32NDS)	TYPE	RIM WIDTH (INCH)	OUTSIDE DIAMETER (INCH)	SECTION WIDTH (INCH)	WGT	MAX. RATED LOAD @ PSI	
											SINGLE	DUAL
NJ820	8.25-20	E/10	129/125	G	23	TT	6.50	39.1	9.3	69	4080@85	3640@75
NJ920	9.00-20	E/10	134/129	G	26	TT	7.00	40.9	10.2	80	4675@80	4080@70
NJ1020	10.00-20	F/12	140/135	F	28	TT	7.50	42.2	10.9	90	5510@85	4805@75

POWER KING®

IN IT FOR THE LONG HAUL

powerkingtires.com • tbcbrands.com • treadxpress.com • 1-866-822-4968

TBCBrands
4300 TBC Way, Palm Beach Gardens, FL 33410

POWER KING[®]

SPECIALTY TIRES **2018**



POWER KING®

IN IT FOR THE LONG HAUL

SPECIALTY TIRES 2018

SPECIALTY TIRES

TABLE OF CONTENTS

GOLF		
GOLF CART	CADDIEMASTER	3
	BKT GF305	3
	SAWTOOTH RIB	3
	TURF RIB	3
	STRAIGHT RIB	4
LAWN & GARDEN		
TILLER	LUG D402	4
TRENCHER	BKT TR-315	4
LAWN & GARDEN	TURF	5
	S-TURF	6
	TRAC	6
	STRAIGHT RIB	6
	SMOOTH	7
	SAWTOOTH RIB	7
	STUD	8
	WHEELBARROW RIB	8
ATV		
ALL-TERRAIN VEHICLE	FRONT KNOBBY	8
	STAGGERED KNOBBY	9
	DIMPLED KNOBBY	9
	KNOBBY	9
	DESERT	10
	MUD & SAND	10
	BKT WING W207	11
	MUDCAT	11
	TERRAROK	12

Every effort has been made to verify the accuracy of the listed specifications. TBC Corporation and TBC Brands cannot be held responsible for any discrepancies, and as such, the information should be considered as approximate.

SPECIALTY TIRES

GOLF



CADDIEMASTER



BKT
GF-305



SAWTOOTH
RIB



TURF RIB



STRAIGHT
RIB

LAWN & GARDEN



LUG
D402



BKT
TR-315



TURF



S-TURF



TRAC



STRAIGHT
RIB



SMOOTH



SAWTOOTH
RIB



STUD



WHEELBARROW
RIB

ATV



FRONT
KNOBBY



STAGGERED
KNOBBY



DIMPLED
KNOBBY



KNOBBY



DESERT



MUD & SAND



BKT
WING W207



MUDCAT



TERRA ROK A/T

GOLF CART / UTILITY VEHICLE

CADDIEMASTER

*DOT Approved For Highway Use

- Designed for golf carts and electric vehicles
- Multi-purpose tread design
- Wide-flotation size
- DOT approved for highway use



ARTICLE NO.	TIRE SIZE	LR/PR	TREAD DEPTH (32NDS)	TYPE	RIM WIDTH (INCH)	OVERALL DIAMETER (INCH)	SECTION WIDTH (INCH)	WGT	MAX. LOAD @ PSI (10 MPH)
CM20510	205/50-10	B/4	11	TL	6.5	18.1	7.8	13	675@30

GOLF CART / UTILITY VEHICLE

BKT GF-305

*DOT Approved For Highway Use

- Designed for golf carts and electric vehicles
- Multi-purpose tread design
- Wide-flotation size
- DOT approved for highway use



ARTICLE NO.	TIRE SIZE	LR/PR	TREAD DEPTH (32NDS)	TYPE	RIM WIDTH (INCH)	OVERALL DIAMETER (INCH)	SECTION WIDTH (INCH)	WGT	MAX. LOAD @ PSI (10 MPH)
94008063	205/50-10	B/4	8	TL	7.0	18.5	8.5	11	665@32

GOLF CART - SAWTOOTH

SAWTOOTH RIB

- Multi-purpose, turf-friendly design
- Square shoulder design for maximum traction and weight disbursement



ARTICLE NO.	TIRE SIZE	LR/PR	TREAD DEPTH (32NDS)	TYPE	RIM WIDTH (INCH)	OVERALL DIAMETER (INCH)	SECTION WIDTH (INCH)	WGT	MAX. LOAD @ PSI (10 MPH)
SST1888	18X8.50-8	B/4	7	TL	7.0	17.7	8.4	10	815@22

GOLF CART

TURF RIB

- Multi-purpose turf friendly design and optimized weight disbursement
- Designed for maximum traction, reduced turf disturbance

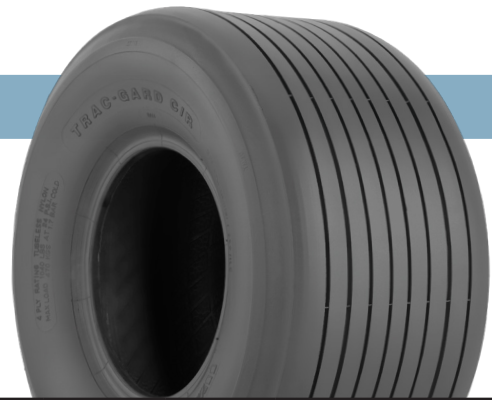


ARTICLE NO.	TIRE SIZE	LR/PR	TREAD DEPTH (32NDS)	TYPE	RIM WIDTH (INCH)	OVERALL DIAMETER (INCH)	SECTION WIDTH (INCH)	WGT	MAX. LOAD @ PSI (10 MPH)
WDG50	18X8.50-8	B/4	7	TL	7.0	17.7	8.4	10	815@22

GOLF CART - RIB

STRAIGHT RIB

- Straight rib design for minimal turf damage
- Wide tread face for traction, reduced turf disturbance and weight distribution



ARTICLE NO.	TIRE SIZE	LR/PR	TREAD DEPTH (32NDS)	TYPE	RIM WIDTH (INCH)	OVERALL DIAMETER (INCH)	SECTION WIDTH (INCH)	WGT	MAX. LOAD @ PSI (10 MPH)
LRW35	18X8.50-8	B/4	6	TL	7.0	17.8	8.5	9	815@22

SPECIALTY AGRICULTURAL / TILLER

LUG D402/D405/D407

- Super lug design for maximum traction
- Nylon cord construction for durability
- Designed for small trenchers and lawn and garden equipment



ARTICLE NO.	TIRE SIZE	LR/PR	TREAD DEPTH (32NDS)	TYPE	RIM WIDTH (INCH)	OVERALL DIAMETER (INCH)	SECTION WIDTH (INCH)	WGT	MAX. LOAD @ PSI (5 MPH)
DS5290^	13X5.00-6	B/4	9	TL	3.5	12.6	4.8	5	441@40
DS5212*	4.80-8	B/4	14	TL	3.0	17.1	4.4	6	342@35
DS5291^	16X6.50-8	B/4	12	TL	5.4	16.0	6.5	7	617@28
DS5245*	23X10.50-12	B/4	18	TL	8.5	22.8	10.4	17	1323@20
DS5251*	26X12.00-12	B/4	22	TL	10.5	25.5	12.1	25	1763@20
DS5324*	26X12.00-12	D/8	23	TL	10.5	25.5	12.1	31	2833@48

* Branded D402 + Branded D405 ^ Branded D407

SPECIALTY AG / TRENCHER

BKT TR-315

- Premium tire designed for excellent traction and minimal soil compaction - heavy duty construction
- Wide footprint for lawn and garden, trenchers, aerial lifts and forklifts



ARTICLE NO.	TIRE SIZE	LR/PR	TREAD DEPTH (32NDS)	TYPE	RIM WIDTH (INCH)	OVERALL DIAMETER (INCH)	SECTION WIDTH (INCH)	WGT	SINGLE MAX. LOAD @ PSI (A3)
94022359	23X8.50-12	C/6	16	TL	7.0	22.6	8.1	15	1445@34
94022311	23X10.50-12	C/6	20	TL	8.0	23.2	10.0	21	1760@32
94022410*	26X12.00-12	D/8	23	TL	10.0	25.8	12.1	31	2790@44
94022441*	31X15.50-15	D/8	25	TL	13.0	31.5	15.4	64	2755@45

* All rated at A3 speed symbol - Maximum rated speed is 9 mph.
+ Maximum speed 31 mph.

LAWN AND GARDEN

TURF

- Multi-purpose, turf-friendly design for utility carts or golf carts
- Square shoulder design for maximum traction and weight distribution
- Not for highway service



ARTICLE NO.	TIRE SIZE	LR/PR	TREAD DEPTH (32NDS)	TYPE	RIM WIDTH (INCH)	OVERALL DIAMETER (INCH)	SECTION WIDTH (INCH)	WGT	MAX. LOAD @ PSI (10 MPH)
LWW05	4.10-4	B/4	3	TL	3.3	10.7	3.9	2	350@50
LWW07	11X4.00-4	B/4	3	TL	3.3	10.8	4.1	3	330@46
LWW10	11X4.00-5	B/4	4	TL	3.0	10.9	4.0	3	325@46
LWW20	13X5.00-6	B/4	4	TL	3.5	12.7	4.8	4	440@40
LWW23	13X6.50-6	B/4	4	TL	5.0	13.1	6.3	5	460@28
LWW25	15X6.00-6	B/4	7	TL	4.5	14.5	6.3	6	570@30
LWW17	4.80-8	B/4	3	TL	3.8	16.6	4.7	5	670@42
LWW30	16X6.50-8	B/4	9	TL	5.4	16.2	6.6	7	620@28
LWW34	16X7.50-8	B/4	9	TL	5.4	16.3	7.2	8	680@24
LWW36	18X6.50-8	B/4	7	TL	5.0	17.9	6.5	8	770@28
LWW38	18X7.00-8	B/4	9	TL	5.4	13.7	7.0	9	785@26
LWW40	18X8.50-8	B/4	9	TL	7.0	17.7	8.5	10	815@22
LWW45	18X9.50-8	B/4	6	TL	7.0	18.3	8.8	10	1040@24
FTW41	20X10.00-8	B/4	9	TL	8.0	19.5	9.8	12	1190@22
LWW188510	18X8.50-10	B/4	8	TL	7.0	18.7	7.9	10	795@22
LWW46	18X10.50-10	B/4	11	TL	8.5	19.1	9.8	13	990@20
FTW54	20X8.00-10	B/4	10	TL	6.0	19.8	8.1	12	895@24
FTW56	20X10.00-10	B/4	10	TL	8.0	19.9	9.6	14	1160@22
FTW55	23X8.50-12	B/4	12	TL	7.0	22.8	8.1	15	1120@22
FTW57	23X9.50-12	B/4	6	TL	7.0	22.8	9.1	15	1380@24
LWW249512	24X9.50-12	B/4	8	TL	7.0	23.8	9.1	16	1500@24
FTW40	23X10.50-12	B/4	12	TL	8.5	23.0	9.8	19	1340@20
LWW241212	24X12.00-12	B/4	12	TL	10.5	23.8	11.6	21	1710@20
FTW58A	26X12.00-12	B/4	12	TL	10.5	25.6	12.3	25	1780@20

LAWN AND GARDEN

S-TURF

- Multi-purpose turf friendly design for utility vehicles or golf carts
- Square shoulder design for maximum traction and weight disbursement
- Not for highway service



ARTICLE NO.	TIRE SIZE	LR/PR	TREAD DEPTH (32NDS)	TYPE	RIM WIDTH (INCH)	OVERALL DIAMETER (INCH)	SECTION WIDTH (INCH)	WGT	MAX. LOAD @ PSI (10 MPH)
LWW225108	22.5X10.00-8	B/4	12	TL	7.0	23.1	9.9	19	1310@20
LWW229510	22X9.50-10	B/4	12	TL	7.0	22.5	9.6	18	1235@29
LWW241210	24X12.00-10	B/4	12	TL	7.8	25.2	11.0	25	1710@20

LAWN AND GARDEN

TRAC

- Multi-purpose turf friendly design for utility vehicles or golf carts
- Square shoulder design for maximum traction and weight disbursement
- Not for highway service

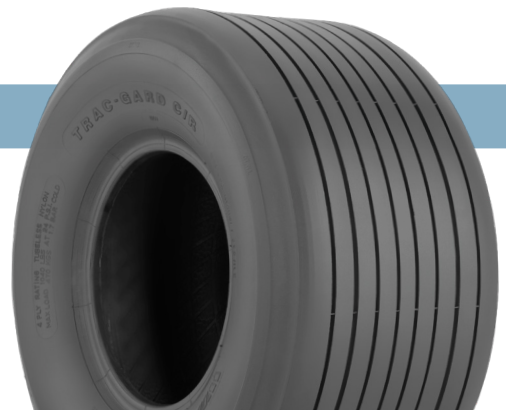


ARTICLE NO.	TIRE SIZE	LR/PR	TREAD DEPTH (32NDS)	TYPE	RIM WIDTH (INCH)	OVERALL DIAMETER (INCH)	SECTION WIDTH (INCH)	WGT	MAX. LOAD @ PSI (10 MPH)
FTW50	20X8.00-8	A/2	6	TL	7.0	19.2	8.3	10	600@10
DS7051	24X12.00-12	B/4	7	TL	9.5	24.0	12.0	19	1709@20

LAWN AND GARDEN

STRAIGHT RIB

- Straight rib design for minimal turf damage
- Square shoulder design for maximum traction and weight disbursement
- Suitable for golf, mowers and other applications
- Not for highway service



ARTICLE NO.	TIRE SIZE	LR/PR	TREAD DEPTH (32NDS)	TYPE	RIM WIDTH (INCH)	OVERALL DIAMETER (INCH)	SECTION WIDTH (INCH)	WGT	MAX. LOAD @ PSI (10 MPH)
LRW10	11X4.00-5	B/4	2	TL	3.0	11.0	3.9	3	325@46
LRW20	13X5.00-6	B/4	4	TL	3.5	12.9	4.7	4	440@40
LRW23	13X6.50-6	B/4	4	TL	5.0	13.4	6.4	5	460@28
LRW25	15X6.00-6	B/4	5	TL	4.5	14.5	6.5	6	570@30
LRW30	16X6.50-8	B/4	5	TL	5.4	16.3	6.7	7	620@28
LRW36	18X9.50-8	B/4	5	TL	7.0	18.5	8.5	9	1040@40

LAWN AND GARDEN

SMOOTH

- Smooth design for no turf damage
- Square shoulder design for maximum traction and weight disbursement
- Suitable for golf, mowers and other applications
- Not for highway service



ARTICLE NO.	TIRE SIZE	LR/PR	TREAD DEPTH (32NDS)	TYPE	RIM WIDTH (INCH)	OVERALL DIAMETER (INCH)	SECTION WIDTH (INCH)	WGT	MAX. LOAD @ PSI (10 MPH)
SM1145	11X4.00-5	B/4	0	TL	3.0	10.9	4.1	3	325@46
SM1356	13X5.00-6	B/4	0	TL	3.5	12.7	4.8	4	440@40
SM1366	13X6.50-6	B/4	0	TL	4.5	13.0	6.3	5	480@28
SM1898	18X9.50-8	B/4	0	TL	7.0	17.8	9.1	10	935@20

LAWN AND GARDEN

SAWTOOTH RIB

- Sawtooth pattern for smooth rolling
- Square shoulder design for maximum traction and weight disbursement
- Suitable for hand trucks, carts, and other material handling equipment
- Popular sizes for pressure washers
- Not for highway service



ARTICLE NO.	TIRE SIZE	LR/PR	TREAD DEPTH (32NDS)	TYPE	RIM WIDTH (INCH)	OVERALL DIAMETER (INCH)	SECTION WIDTH (INCH)	WGT	MAX. LOAD @ PSI (10 MPH)
SSW02	2.80-4	B/4	3	TL	2.3	9.0	2.9	2	295@50
SSW05	4.10-4	B/4	5	TL	3.3	10.6	3.9	3	350@50
SSW10	4.10-5	B/4	5	TL	3.3	11.7	3.8	3	380@50
SSW15	4.10-6	B/4	5	TL	3.3	12.5	3.9	3	445@50
SSW20	5.30-6	B/4	4	TL	4.3	14.5	5.2	4	635@38

LAWN AND GARDEN

STUD

- Stud design for long-wearing traction
- Square shoulder design for maximum traction and weight disbursement
- Suitable for hand trucks, carts, and other material handling equipment
- Popular sizes for pressure washers
- Not for highway service



ARTICLE NO.	TIRE SIZE	LR/PR	TREAD DEPTH (32NDS)	TYPE	RIM WIDTH (INCH)	OVERALL DIAMETER (INCH)	SECTION WIDTH (INCH)	WGT	MAX. LOAD @ PSI (10 MPH)
SUW05	4.10-4	B/4	5	TL	3.3	10.6	3.9	3	350@50
SUW10	4.10-5	B/4	5	TL	3.3	11.6	3.9	3	380@50
SUW15	4.10-6	B/4	5	TL	3.3	12.6	3.8	3	445@50
SUW20	4.80-8	B/4	6	TL	3.8	16.5	4.7	5	670@42

LAWN AND GARDEN

WHEELBARROW RIB

- Wheelbarrow rib design for smooth, easy control
- Round shoulder design for less rolling resistance
- Suitable for wheelbarrows, carts and spreaders
- Not for highway service



ARTICLE NO.	TIRE SIZE	LR/PR	TREAD DEPTH (32NDS)	TYPE	RIM WIDTH (INCH)	OVERALL DIAMETER (INCH)	SECTION WIDTH (INCH)	WGT	MAX. LOAD @ PSI
WWW08A	4.10-6	B/4	2	TL	2.5	13.5	4.0	3	445@50
WWW11A	4.80-8	B/4	2	TL	3.8	16.1	4.8	4	670@42

ALL-TERRAIN VEHICLE

FRONT KNOBBY

- Large knobs for increased steering stability
- Design gives excellent traction in loose and hard terrains
- Not for highway service



ARTICLE NO.	TIRE SIZE	LR/PR	TREAD DEPTH (32NDS)	TYPE	RIM WIDTH (INCH)	OVERALL DIAMETER (INCH)	SECTION WIDTH (INCH)	WGT	MAX. LOAD @ PSI
KNW48	21X7-10	A/2	13	TL	5.5	21.1	6.7	10	205@5
KNW52	23.5X8-11	A/2	13	TL	6.5	23.7	7.7	11	255@5

ALL-TERRAIN VEHICLE

STAGGERED KNOBBY

- Staggered knobby design
- Excellent all-around tire
- Flexible sidewall provides a soft ride
- Not for highway service



ARTICLE NO.	TIRE SIZE	LR/PR	TREAD DEPTH (32NDS)	TYPE	RIM WIDTH (INCH)	OVERALL DIAMETER (INCH)	SECTION WIDTH (INCH)	WGT	MAX. LOAD @ PSI
KNW47	145/70-6	A/2	7	TL	5.0	14.0	5.8	4	130@3.6
KNW49	22X11-8	A/2	12	TL	9.0	21.2	10.6	11	340@5
KNW51	25X12-9	A/2	13	TL	9.5	25.0	11.6	19	430@5

ALL-TERRAIN VEHICLE

DIMPLED KNOBBY

- Cupped knobby tread for maximum traction
- Heavy sidewall resists punctures
- Low profile design for added comfort and stability
- Not for highway service



ARTICLE NO.	TIRE SIZE	LR/PR	TREAD DEPTH (32NDS)	TYPE	RIM WIDTH (INCH)	OVERALL DIAMETER (INCH)	SECTION WIDTH (INCH)	WGT	MAX. LOAD @ PSI
AHW35	16X8-7	A/2	7	TL	6.5	16.0	5.8	8	128@4
AHW40	18X9.50-8	A/2	12	TL	7.0	18.1	8.5	9	225@5
AHW45	20X7-8	A/2	9	TL	5.5	19.5	7.0	8	195@5
AHW49	22X11-8	A/2	18	TL	9.0	22.0	10.9	15	340@5
AHW55	22X11-9	A/2	18	TL	9.0	22.0	10.7	16	340@5
DS7325	25X12-9	B/4	17	TL	10.0	25.0	12.0	16	430@5
AHW50	22X11-10	A/2	18	TL	9.0	22.0	10.6	16	330@5

ALL-TERRAIN VEHICLE

KNOBBY

- Cupped knobby tread for maximum traction
- Heavy sidewall resists punctures
- Low profile design for added comfort and stability
- Not for highway service



ARTICLE NO.	TIRE SIZE	LR/PR	TREAD DEPTH (32NDS)	TYPE	RIM WIDTH (INCH)	OVERALL DIAMETER (INCH)	SECTION WIDTH (INCH)	WGT	MAX. LOAD @ PSI
KNW44	20X11-9	B/4	15	TL	9.0	20.0	11.0	16	290@5

ALL-TERRAIN VEHICLE

DESERT

- Heavy 4-ply nylon construction
- Bead saver style sidewall protects rim from damage
- Large styled knobs provide maximum traction and easy cleanout
- Not for highway service



ARTICLE NO.	TIRE SIZE	LR/PR	TREAD DEPTH (32NDS)	TYPE	RIM WIDTH (INCH)	OVERALL DIAMETER (INCH)	SECTION WIDTH (INCH)	WGT	MAX. LOAD @ PSI
DSW50	22X11-10	B/4	20	TL	9.0	22.0	10.0	19	330@5

ALL-TERRAIN VEHICLE

MUD & SAND

- Dual-purpose tread
- Heavy center bar tread for maximum traction and cleanout
- Knobby design in shoulder area for added traction in turns
- Not for highway service



ARTICLE NO.	TIRE SIZE	LR/PR	TREAD DEPTH (32NDS)	TYPE	RIM WIDTH (INCH)	OVERALL DIAMETER (INCH)	SECTION WIDTH (INCH)	WGT	MAX. LOAD @ PSI
WGW60	22X12-8	B/4	20	TL	9.5	23.6	10.8	19	430@7
WGW61	25X13-9	B/4	20	TL	10.5	25.3	12.4	25	535@7
DS7375	23X8-11	B/4	15	TL	6.5	23.0	8.0	14	255@5
DS7380	24X9-11	B/4	16	TL	7.5	24.0	8.9	15	309@5
DS7386	25X8-12	B/4	18	TL	6.5	25.0	8.0	17	291@5
DS7391	25X10-12	B/4	18	TL	8.5	25.0	10.0	20	364@5

PREMIUM ALL-TERRAIN VEHICLE

BKT WING - W207

- Modern, premium all-purpose design for traction and durability
- Deep tread and wing design provides excellent cleanout
- Shoulder knobs wrap down sidewall for increased traction
- Heavy 6-ply rated sidewall and reinforced casing for maximum puncture resistance
- Not for highway service



ARTICLE NO.	TIRE SIZE	C/LR/PR	TREAD DEPTH (32NDS)	TYPE	RIM WIDTH (INCH)	OVERALL DIAMETER (INCH)	SECTION WIDTH (INCH)	WGT	MAX. LOAD @ PSI
94001736	22X11-8	C/6	22	TL	9.0	22.1	10.7	21	395@7
94001743	22X11-9	C/6	22	TL	9.0	22.1	10.7	21	395@7
94001637	25X12-9	C/6	22	TL	9.5	24.9	11.8	29	495@7
94001644	25X13-9	C/6	22	TL	10.5	25.0	13.0	30	535@7
94027064	22X7-10	C/6	22	TL	5.5	22.0	7.0	15	255@7
94001750	22X8-10	C/6	22	TL	6.5	22.0	8.0	17	275@7
94027057	22X11-10	C/6	22	TL	9.0	22.1	10.7	21	385@7
94027071	23X7-10	C/6	22	TL	5.5	23.0	7.0	15	275@7
94001514	23X8-10	C/6	22	TL	6.5	23.2	8.0	18	300@7
94001491	23X10-10	C/6	22	TL	8.0	23.1	9.8	21	375@7
94001767	24X11-10	C/6	22	TL	9.0	24.0	11.0	24	440@7
94001606	25X11-10	C/6	22	TL	9.0	25.2	11.2	25	455@7
94001521	23X8-11	C/6	22	TL	6.5	23.0	8.0	19	290@7
94001552	24X8-11	C/6	22	TL	6.5	24.1	8.0	19	320@7
94001576	24X9-11	C/6	22	TL	7.0	24.0	8.9	21	365@7
94001538	24X10-11	C/6	22	TL	8.0	24.1	9.8	22	395@7
94001583	25X10-11	C/6	22	TL	8.0	25.1	9.8	24	420@7
94001569	24X8-12	C/6	22	TL	6.5	24.2	7.8	19	310@7
94001781	25X8-12	C/6	22	TL	6.5	25.1	7.8	20	340@7
94001774	25X10-12	C/6	22	TL	8.0	25.1	9.8	24	420@7
94001613	25X11-12	C/6	22	TL	9.0	25.1	11.2	25	455@7

PREMIUM ALL-TERRAIN VEHICLE

MUDCAT

- Premium all-terrain/mud design for utility class ATVs
- Aggressive, self-cleaning tread design for superior mud traction
- Shoulder lugs for added traction and improved appearance
- Riding cleat for smoother trail riding
- Unique sidewall styling with shoulder and sidewall treatments
- Heavy 6-ply rated sidewall resists snags and punctures
- Not for highway service



ARTICLE NO.	TIRE SIZE	LR/PR	TREAD DEPTH (32NDS)	TYPE	RIM WIDTH (INCH)	OVERALL DIAMETER (INCH)	SECTION WIDTH (INCH)	WGT	MAX. LOAD @ PSI
ATV50	25X11-10	C/6	32	TL	9.0	25.1	10.9	30	455@7
ATV53	25X9-11	C/6	30	TL	7.0	25.0	8.8	24	410@7
ATV54	25X10-11	C/6	30	TL	8.0	25.0	9.8	27	440@7
ATV78	25X8-12	C/6	32	TL	6.5	25.0	7.9	22	340@7
ATV79	25X10-12	C/6	32	TL	8.0	25.0	9.8	26	420@7
ATV83	26X9-12	C/6	34	TL	7.0	25.9	8.8	26	410@7
ATV85	26X12-12	C/6	34	TL	9.5	26.0	11.5	32	520@7
ATV89	27X9-12	C/6	34	TL	7.0	27.1	8.9	28	440@7
ATV91	27X12-12	C/6	34	TL	9.5	26.9	11.7	33	550@7

RADIAL ALL-TERRAIN VEHICLE

TERRAROK A/T

- Wrap-around lugs provide improved shoulder protection
- Tread pattern designed to provide a smooth and predictable ride
- All-terrain traction for both the trail and the street
- Solid 8-ply construction



ARTICLE NO.	TIRE SIZE	LR/PR	TREAD DEPTH (32NDS)	TYPE	RIM WIDTH (INCH)	OVERALL DIAMETER (INCH)	SECTION WIDTH (INCH)	WGT	MAX. LOAD @ PSI
TRA78	25X8.00R12	D/8	25	TL	7.0	25.0	8.0	24	696@18
TRA79	25X10.00R12	D/8	25	TL	7.0	25.2	10.0	29	855@18
TRA72	25X11.00R12	D/8	25	TL	9.0	25.8	11.2	35	900@18
TRA83	26X9.00R12	D/8	25	TL	7.0	26.0	8.6	28	827@18
TRA86	26X11.00R12	D/8	25	TL	9.0	26.0	11.2	36	990@18
TRA87	26X9.00R14	D/8	25	TL	7.0	26.5	8.6	33	800@18
TRA92	27X9.00R14	D/8	25	TL	7.0	27.0	8.5	29	855@18
TRA90	26X11.00R14	D/8	25	TL	9.0	26.8	10.6	36	966@18
TRA94	27X11.00R14	D/8	25	TL	9.5	27.2	11.2	38	1032@18

POWER KING®

IN IT FOR THE LONG HAUL

powerkingtires.com • tbcbrands.com • treadxpress.com • 1-866-822-4968

TBCBrands
4300 TBC Way, Palm Beach Gardens, FL 33410

POWER KING is the registered trademark of TBC Corporation.

POWER KING[®]

INDUSTRIAL/OTR TIRES **2018**



POWER KING[®]

IN IT FOR THE LONG HAUL

INDUSTRIAL/OTR TIRES 2018

INDUSTRIAL TIRES

TABLE OF CONTENTS

SKID STEER		
SKID STEER	POWER KING LOADER +	5
	POWER KING RIM GUARD SD	5
	BKT SKID POWER CHEVRON	5
PREMIUM SKID STEER	POWER KING RIM GUARD SD+	6
	POWER KING RIM GUARD HD+	6
	BKT SKID POWER HD/SK	7
HARD SURFACE SKID STEER	POWER KING RIM GUARD ND	7
	BKT SURE TRAX HD	7
	BKT JUMBO TRAX HD	8
SEVERE SERVICE SKID STEER	POWER KING RIM GUARD LD	8
	BKT POWER TRAX HD	8
	POWER KING RIM TRENCHER LUG	9
FORKLIFT		
SMOOTH COMPACTOR C-1	BKT PAC MASTER	9
INDUSTRIAL FORKLIFT	BKT POWER TRAX HD	9
	INDUSTRIAL D306	10
	INDUSTRIAL D301	10
OTR		
GRADER G-2	POWER KING ROAD GRADER G-2	10
LOADER L-2	POWER KING INDUSTRIAL LOADER L-2	11
LOADER DOZER L-3	POWER KING INDUSTRIAL GRIP II E-3/L-3	11
	POWER KING XERT-3 RADIAL E-3/L-3	11

Every effort has been made to verify the accuracy of the listed specifications. TBC Corporation and TBC Brands cannot be held responsible for any discrepancies, and as such, the information should be considered as approximate.

INDUSTRIAL TIRES

SKID STEER



POWER KING
LDR+



POWER KING
RIM GUARD SD



BKT
SKID POWER
CHEVRON



POWER KING
RIM GUARD SD+



POWER KING
RIM GUARD HD+



BKT
SKID POWER HD/SK



POWER KING
RIM GUARD ND



BKT
SURE TRAX HD



BKT
JUMBO TRAX HD



POWER KING
RIM GUARD LD



BKT
POWER TRAX HD



POWER KING
RIM TRENCHER
LUG

FORKLIFT



BKT
PAC MASTER



BKT
POWER TRAX HD



INDUSTRIAL
D306



INDUSTRIAL
D301

OTR



POWER KING
ROAD GRADER G-2



POWER KING
INDUSTRIAL
LOADER L-2



POWER KING
INDUSTRIAL GRIP
E-3-L-3



POWER KING
XERT-3 RADIAL
E-3-L-3

SKID STEER

POWER KING LOADER +

- Excellent value for skid steer loaders and industrial equipment
- Overlapping lugs with open shoulder for traction and improved tread wear



ARTICLE #	SIZE	LR/PR	TREAD DEPTH (32NDS)	TYPE	RIM WIDTH (INCH)	OVERALL DIAMETER (INCH)	SECTION WIDTH (INCH)	WGT	MAX. LOAD @ PSI (5 MPH)
RGD21	10-16.5	D/8	21	TL	8.25	30.4	10.4	45	4140@60
RGD26	12-16.5	E/10	21	TL	9.75	32.7	12.1	61	5600@65

SKID STEER

POWER KING RIM GUARD SD

- Excellent value for skid steer loaders and industrial equipment
- Overlapping lugs with open shoulder for traction and improved tread wear
- Heavy construction for durability and reduced downtime



ARTICLE #	SIZE	LR/PR	TREAD DEPTH (32NDS)	TYPE	RIM WIDTH (INCH)	OVERALL DIAMETER (INCH)	SECTION WIDTH (INCH)	WGT	MAX. LOAD @ PSI (5 MPH)
SRG21	10-16.5	D/8	19	TL	8.25	30.4	10.4	45	4140@60
SRG26	12-16.5	E/10	20	TL	9.75	32.7	12.1	57	5600@65

SKID STEER

BKT SKID POWER CHEVRON

- Chevron tread design and nylon construction
- Designed for skid steer usage



ARTICLE #	SIZE	LR/PR	TREAD DEPTH (32NDS)	TYPE	RIM WIDTH (INCH)	OVERALL DIAMETER (INCH)	SECTION WIDTH (INCH)	WGT	MAX. LOAD @ PSI (5 MPH)
94017171	7.00-15	C/6	17	TL	5.50	30.0	8.0	40	3180@60

SKID STEER

POWER KING RIM GUARD SD+

- Heavy duty construction for durability and reduced downtime
- Overlapping lugs with open shoulder for superior traction
- Heavy gauge sidewall with rim guard feature protects rim and reduces sidewall damage



ARTICLE #	SIZE	LR/PR	TREAD DEPTH (32NDS)	TYPE	RIM WIDTH (INCH)	OVERALL DIAMETER (INCH)	SECTION WIDTH (INCH)	WGT	MAX. LOAD @ PSI (5 MPH)
SRG22	10-16.5	E/10	19	TL	8.25	30.4	10.4	45	4710@75
SRG27	12-16.5	F/12	20	TL	9.75	32.7	12.1	58	6310@80

PREMIUM SKID STEER

POWER KING RIM GUARD HD+

- Premium skid steer tire with deeper tread for longer tire life
- Heavy duty construction for durability and reduced downtime
- Overlapping lugs with open shoulder for superior traction
- Heavy gauge sidewall with rim guard feature protects rim and reduces sidewall damage



ARTICLE #	SIZE	LR/PR	TREAD DEPTH (32NDS)	TYPE	RIM WIDTH (INCH)	OVERALL DIAMETER (INCH)	SECTION WIDTH (INCH)	WGT	MAX. LOAD @ PSI (5 MPH)
RGD14	27X8.50-15	D/8	16	TL	7.00	26.7	8.4	29	1820@60
RGD16	27X10.50-15	D/8	16	TL	8.50	27.2	10.2	36	1930@60
RGD22	10-16.5	E/10	16	TL	8.25	30.4	10.4	46	4710@75
RGD27	12-16.5	F/12	21	TL	9.75	32.7	12.1	67	6320@80
RGD55	33X15.50-16.5	F/12	26	TL	12.00	33.9	15.4	96	6930@70
RGD33	14-17.5	G/14	23	TL	10.50	36.3	13.8	101	8540@80
RGD45	15-19.5	G/14	23	TL	11.75	40.1	15.3	157	10060@70

PREMIUM SKID STEER

BKT SKID POWER HD/SK

- Premium skid steer tire with deeper tread for longer tire life
- Heavy duty construction for durability and reduced downtime
- Overlapping lugs with open shoulder for superior traction
- Heavy gauge sidewall with rim guard feature protects rim and reduces sidewall damage



ARTICLE #	SIZE	LR/PR	TREAD DEPTH (32NDS)	TYPE	RIM WIDTH (INCH)	OVERALL DIAMETER (INCH)	SECTION WIDTH (INCH)	WGT	MAX. LOAD @ PSI (5 MPH)
94017775	23X8.50-12	C/6	18	TL	7.00	23.0	8.5	26	1810@50
94017935	31X15.5-15	E/10	26	TL	13.00	31.1	15.7	82	4320@61
94017225*	10-16.5	E/10	19	TL	8.25	30.5	10.6	48	4710@75
94017263*	12-16.5	F/12	22	TL	9.75	32.5	12.3	71	6320@80
94017904	31.5X13-16.5	E/10	24	TL	9.75	31.3	13.0	67	5370@70
94017942	33X15.5-16.5	F/12	27	TL	13.00	33.0	15.5	98	6930@70

* Branded Skid Power SK

HARD SURFACE SKID STEER

POWER KING RIM GUARD ND+

- Non-directional design to perform equally going forward or in reverse
- Superior durability delivered by extra heavy duty construction
- Improved compounding for excellent cut and chip resistance
- Deep tread for extra-long life



ARTICLE #	SIZE	LR/PR	TREAD DEPTH (32NDS)	TYPE	RIM WIDTH (INCH)	OVERALL DIAMETER (INCH)	SECTION WIDTH (INCH)	WGT	MAX. LOAD @ PSI (5 MPH)
NRG22	10-16.5	E/10	38	TL	8.25	30.4	10.4	64	4710@75
NRG27	12-16.5	E/10	43	TL	9.75	32.7	12.1	92	5600@65

HARD SURFACE SKID STEER

BKT SURE TRAX HD

- Wide-profile skid steer line
- Special compound for extended life on paved/hard surfaces
- Designed to maintain broadest footprint and maximum grip



ARTICLE #	SIZE	LR/PR	TREAD DEPTH (32NDS)	TYPE	RIM WIDTH (INCH)	OVERALL DIAMETER (INCH)	SECTION WIDTH (INCH)	WGT	MAX. LOAD @ PSI (5 MPH)
94017997	12-16.5	F/12	26	TL	9.75	33.7	12.8	80	6320@80

PREMIUM HARD SURFACE SKID STEER

BKT JUMBO TRAX HD

- New generation design for maximum tread life
- Built to withstand the roughest surfaces, extra NSD
- Extra-thick sidewall with rim guard gives added protection



ARTICLE #	SIZE	LR/PR	TREAD DEPTH (32NDS)	TYPE	RIM WIDTH (INCH)	OVERALL DIAMETER (INCH)	SECTION WIDTH (INCH)	WGT	MAX. LOAD @ PSI (5 MPH)
94017287	10-16.5	E/10	37	TL	8.25	31.3	10.6	73	4710@75
94017294	12-16.5	E/10	43	TL	9.75	33.7	12.8	94	5600@65

SEVERE SERVICE SKID STEER

POWER KING RIM GUARD LD+

- L-4 tread design for maximum ground contact
- Improved compounding for excellent cut and chip resistance
- Heavy duty sidewall construction for increased durability
- Deep tread for extra-long life



ARTICLE #	SIZE	LR/PR	TREAD DEPTH (32NDS)	TYPE	RIM WIDTH (INCH)	OVERALL DIAMETER (INCH)	SECTION WIDTH (INCH)	WGT	MAX. LOAD @ PSI (5 MPH)
LRG22	10-16.5	E/10	39	TL	8.25	31.1	11.0	79	4710@74
LRG27	12-16.5	G/14	39	TL	9.75	32.9	13.0	101	6760@90

PREMIUM SEVERE SERVICE SKID STEER

BKT POWER TRAX HD

- Premium, deep tread and extra-thick sidewall ensures longer life
- Silica and natural rubber provide excellent chip and tear protection
- Suitable for scrap yards, mining and recycling operations



ARTICLE #	SIZE	LR/PR	TREAD DEPTH (32NDS)	TYPE	RIM WIDTH (INCH)	OVERALL DIAMETER (INCH)	SECTION WIDTH (INCH)	WGT	MAX. LOAD @ PSI (5 MPH)
94017300	10-16.5	E/10	42	TL	8.25	31.1	10.6	79	4710@75
94017393	12-16.5	G/14	42	TL	9.75	34.1	12.8	106	6780@90

HEAVY DUTY TRENCHER TIRE

POWER KING RIM TRENCHER LUG

- Bar traction design for excellent traction in muddy conditions
- Improved compounding for excellent cut and chip resistance
- Multi-purpose design for both agricultural and industrial use



ARTICLE #	SIZE	LR/PR	TREAD DEPTH (32NDS)	TYPE	RIM WIDTH (INCH)	OVERALL DIAMETER (INCH)	SECTION WIDTH (INCH)	WGT	MAX. LOAD @ PSI (30 MPH)
TRG31	31x15.5-15	E/10	21	TL	13.00	31.2	15.4	75	3200@60

SMOOTH COMPACTOR C-1

BKT PAC MASTER

- Designed for compacting roadbeds
- Engineered to provide equal distribution of ground pressure across the tire
- Tread compound specially formulated to endure high temperatures and minimize loose material sticking to tire



ARTICLE #	SIZE	LR/PR	TREAD DEPTH (32NDS)	TYPE	RIM WIDTH (INCH)	OVERALL DIAMETER (INCH)	SECTION WIDTH (INCH)	WGT	MAX. LOAD @ PSI (5 MPH)
94002566	7.50-15	F/12	Smooth	TT	6.00	31.1	8.9	50	5840@109
94002603	8.50/90-15K	C/6	Smooth	TL	6.00	30.9	9.1	46	3960@51

PREMIUM SEVERE SERVICE FORKLIFT

BKT POWER TRAX HD

- Premium, deep tread and extra-thick sidewall ensures longer life
- Silica and natural rubber provide excellent chip and tear protection
- Suitable for scrap yards, mining and recycling operations



ARTICLE #	SIZE	LR/PR	TREAD DEPTH (32NDS)	TYPE	RIM WIDTH (INCH)	OVERALL DIAMETER (INCH)	SECTION WIDTH (INCH)	WGT	MAX. LOAD @ PSI
94007684	12.00-20	28	43	TT	8.50	45.3	12.6	226	20920@149

INDUSTRIAL FORKLIFT

INDUSTRIAL D306

- Premium service tire designed for material handling, construction and mining
- Flat tread and square shoulder
- Large tread blocks provide long, even wear
- Rim guard feature minimizes tire damage



ARTICLE #	SIZE	LR/PR	TREAD DEPTH (32NDS)	TYPE	RIM WIDTH (INCH)	OVERALL DIAMETER (INCH)	SECTION WIDTH (INCH)	WGT	MAX. LOAD @ PSI (15 MPH)
DS6121	5.00-8	D/8	16	TT	3.00	18.5	5.2	15	1830@115
DS6125	6.00-9	E/10	19	TT	4.00	21.5	6.3	23	3340@125
DS6130	6.50-10	F/12	19	TT	5.00	23.5	7.0	31	4260@140
DS6135	7.00-12	G/14	20	TT	5.00	26.9	7.6	43	5885@145
DS6141	7.00-15	G/14	19	TT	6.00	30.0	8.0	47	6810@145
DS6145	7.50-15	G/14	20	TT	6.00	31.8	8.5	57	7725@140
DS6150	8.15-15	G/14	20	TT	7.00	27.8	8.7	51	6775@140
DS6155	8.25-15	G/14	20	TT	6.50	33.4	9.3	70	8445@120

INDUSTRIAL FORKLIFT

INDUSTRIAL D301

- Designed for forklift trucks and material handling equipment
- Robust casing and thick sidewall for excellent durability



ARTICLE #	SIZE	LR/PR	TREAD DEPTH (32NDS)	TYPE	RIM WIDTH (INCH)	OVERALL DIAMETER (INCH)	SECTION WIDTH (INCH)	WGT	MAX. LOAD @ PSI (15 MPH)
DS6019	5.00-8	D/8	16	TTF	3.00	18.5	5.2	14	1830@115
DS6015	6.00-9	E/10	18	TTF	4.00	21.5	6.3	20	3340@125
DS6020	6.50-10	E/10	20	TTF	5.00	23.5	7.0	25	3805@115
DS6025	7.00-12	F/12	23	TTF	5.00	26.9	7.6	39	5390@125
DS6035	7.50-15	F/12	23	TTF	6.00	30.0	8.0	56	6250@125
DS6046	8.25-15	G/14	23	TTF	6.50	33.4	9.3	65	8445@120
DS6048	250-15	J/18	25	TTF	7.50	28.9	9.8	73	9050@150

GRADER G-2

POWER KING ROAD GRADER G-2

- Designed and built for the most demanding and punishing environments
- "Heavyweight" tire for superior durability and performance
- Ideally suited for graders



ARTICLE #	SIZE	LR/PR	TREAD DEPTH (32NDS)	TYPE	RIM WIDTH (INCH)	OVERALL DIAMETER (INCH)	SECTION WIDTH (INCH)	WGT	MAX. LOAD @ PSI (5 MPH)
PGR37	13.00-24	F/12	27	TL	8.00	50.6	13.9	132	6010@44
PGR32	14.00-24	F/12	29	TL	8.00	53.0	15.4	166	6780@36

LOADER L-2

POWER KING INDUSTRIAL LOADER L-2

- Designed and built for the most demanding and punishing environments
- Multi-purpose tire designed for maximum traction, slippage resistance and superior wear
- Many of the popular sizes and ply ratings in the industry



ARTICLE #	SIZE	LR/PR	TREAD DEPTH (32NDS)	TYPE	RIM WIDTH (INCH)	OVERALL DIAMETER (INCH)	SECTION WIDTH (INCH)	WGT	MAX. LOAD @ PSI (5 MPH)
PLR43	15.5-25	F/12	28	TL	12.00	51.1	16.3	168	12350@58
PLR45	17.5-25	F/12	29	TL	12.00	52.2	18.4	184	13560@51
PLR46	17.5-25	H/16	29	TL	14.00	52.2	18.4	185	16095@69
PLR51	20.5-25	F/12	33	TL	17.00	59.4	22.1	256	14775@36
PLR53	20.5-25	H/16	33	TL	17.00	59.4	22.1	278	18190@51
PLR61	23.5-25	H/16	38	TL	19.50	65.4	22.9	385	20950@44

LOADER DOZER E-3/L-3

POWER KING INDUSTRIAL GRIP II E-3/L-3

- Special tread compound designed to reduce punctures and cuts
- Strong carcass structure designed to handle the heaviest loads
- Extra wide tread provides a greater footprint



ARTICLE #	SIZE	LR/PR	TREAD DEPTH (32NDS)	TYPE	RIM WIDTH (INCH)	OVERALL DIAMETER (INCH)	SECTION WIDTH (INCH)	WGT	MAX. LOAD @ PSI (5 MPH)
APL175A	17.5-25	H/16	37	TL	14.00	53.1	17.5	249	16100@69
APL205A	20.5-25	L/20	40	TL	17.00	58.8	20.5	368	20900@65
APL235A	23.5-25	L/20	48	TL	19.50	63.7	23.5	525	24000@54

RADIAL LOADER DOZER E-3/L-3

POWER KING XERT-3 RADIAL E-3/L-3

- Wear and cut-resistant tread compound
- Excellent traction and flotation
- Reduced vibration and improved stability
- Self-cleaning tread for superior traction
- Cooler-running tread for longer life



ARTICLE #	SIZE	LR/PR	TREAD DEPTH (32NDS)	TYPE	RIM WIDTH (INCH)	OVERALL DIAMETER (INCH)	SECTION WIDTH (INCH)	WGT	MAX. LOAD @ PSI (5 MPH)
XRT155	15.5R25	176A2	30	TL	12.00	50.2	15.3	293	15700@94
XRT175	17.5R25	182A2	32	TL	14.00	53.0	17.3	331	18700@94
XRT205	20.5R25	193A2	36	TL	17.00	58.7	20.5	496	25400@94
XRT235	23.5R25	201A2	40	TL	19.50	63.5	23.5	675	32000@94
XRT265	26.5R25	209A2	44	TL	22.00	68.7	26.5	915	40800@94
XRT295	29.5R25	216A2	48	TL	25.00	73.5	29.5	1135	49400@94

POWER KING®

IN IT FOR THE LONG HAUL

powerkingtires.com • tbcbrands.com • treadxpress.com • 1-866-822-4968

TBCBrands

4300 TBC Way, Palm Beach Gardens, FL 33410