



PUREBRED TREADS





PUREBRED TREADS





CONTENTS

Treads by Size guide	2
Farm Tires Cover Page	5
Radial Farm	6
Bias Rear Farm	7
Bias Front Farm	8
Implement	9
Power Tires Cover Page	10
Skid Steer	11
Construction	13
Forklift	14
ATV Cover Page.....	15
Standard ATV	16
Heeler ATV	16
Lawn and Garden Cover Page	16
Turf	17
PlusTurf	18
Power	18
Rib	19
Stud	19
Sawtooth	20
Golf	20
Trailer Tires Cover Page	20
Bias Trailer	21
Radial Trailer	22
Wheels Cover Page	22
Stamped White	23
White Spoke	24
Galvanized Spoke	24
Silver Mod	25

TREAD GUIDE

R1 Radial



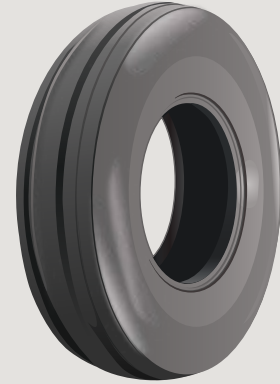
11.2R20 (280/85R20)
 11.2R24 (280/85R24)
 12.4R24 (320/85R24)
 13.6R24 (340/85R24)
 14.9R24 (380/85R24)
 13.6R28 (340/85R28)
 14.9R28 (380/85R28)
 16.9R28 (420/85R28)
 14.9R30 (380/85R30)
 16.9R30 (420/85R30)
 18.4R30 (480/85R30)
 16.9R34 (420/85R34)
 18.4R34 (460/85R34)
 16.9R38 (420/85R38)
 18.4R38 (460/85R38)
 20.8R38 (520/85R38)

R1



5.00-12 18.4-26
 6.00-12 11.2-28
 6-14 12.4-28
 6.00-16 13.6-28
 7-16 14.9-28
 7.50-16 16.9-28
 8-16 16.9-30
 9.5-16 18.4-30
 7.50-20 9.5-32
 8.3-24 18.4-34
 9.5-24 15.5-38
 11.2-24 18.4-38
 12.4-24 20.8-38
 13.6-24
 14.9-24

F2



4.00-12
 4.00-15
 5.00-15
 7.5L-15
 9.5L-15
 11L-15
 5.50-16
 6.00-16
 6.50-16
 7.50-16
 10.00-16
 11.00-16
 4.00-19
 7.50-20

I1



9.5L-14
 11L-14
 5.90L-15
 6.70L-15
 7.60L-15
 9.5L-15
 11L-15
 12.5L-15
 11L-16
 14L-16.1
 16.5L-16.1

SK



10-16.5
 12-16.5
 14-17.5

SK+



10-16.5
 12-16.5

SK ND



12-16.5

Solid SK



30X10-16 (10-16.5)
 33X12-20 (12-16.5)

F3



11L-15
 11L-16

TREAD GUIDE

R4



12.5/80-18
16.9-24
17.5L-24
19.5L-24

Industrial Lug



5.00-8
6.00-9
6.50-10
7.00-12
28X9-15 (8.15-15)
7.50-15
8.25-15

ATV Standard



25X12-10
24X8-12
25X8-12
25X10-12
26X9-12
26X11-12

ATV Heeler



25X8-12
25X10-12
26X9-12
26X11-12
26X9-14
26X11-14
27X9-14
27X11-14

Turf



4.10/3.50-4
11X4.00-5
13X5.00-6
13X6.50-6
15X6.00-6
16X6.50-8
18X8.50-8
18X9.50-8
20X8.00-8
20X10.00-8

Plus Turf



20X10.00-10
23X8.50-12
23X10.50-12
24X12.00-12
26X12.00-12

R1 LG



13X5.00-6
15X6.00-6
16X6.50-8
18X9.50-8
20X10.00-8
23X10.50-12
24X12.00-12
26X12.00-12
31X15.50-15

Rib



11X4.00-5
13X5.00-6
13X6.50-6
15X6.00-6
16X6.50-8
18X8.50-8

Stud



4.10/3.50-4
4.10/3.50-6
4.80-8

TREAD GUIDE

Sawtooth



4.10/3.50-4
4.10/3.50-5
4.10/3.50-6

Bias Round



18X8.50-8
18.5X8.50-8
20.5X8.0-10

Bias Square



4.80-8
5.70-8
4.80-12
5.30-12

Radial ST



ST175/80R13
ST205/75R14
ST215/75R14
ST205/75R15
ST225/75R15
ST235/80R16
ST235/85R16

K9



K9 FARM TIRES

RADIAL FARM



Aggressive tread design provides stable steering, powerful traction, and excellent lateral stability while reducing vibration during high speed.



PART #	SIZE	LOAD INDEX	TT/TL	OVERALL DIAMETER		SECTION WIDTH		LOAD LIMIT (LBS)	PSI
				mm	inches	mm	inches		
K9-112R20	11.2R20 (280/85R20)	111 A8	TL	1000	39.4	280	11.0	2403	23
K9-112R24	11.2R24 (280/85R24)	114 A8	TL	1105	43.5	280	11.0	2601	23
K9-124R24	12.4R24 (320/85R24)	119 A8	TL	1156	45.5	308	12.1	2998	23
K9-136R24	13.6R24 (340/85R24)	121 A8	TL	1190	46.9	345	13.6	3197	23
K9-149R24	14.9R24 (380/85R24)	126 A8	TL	1245	49.0	378	14.9	3748	23
K9-136R28	13.6R28 (340/85R28)	123 A8	TL	1295	51.0	345	13.6	3417	23
K9-149R28	14.9R28 (380/85R28)	128 A8	TL	1360	53.5	378	14.9	3968	23
K9-169R28	16.9R28 (420/85R28)	136 A8	TL	1420	55.9	433	17.0	4938	23
K9-149R30	14.9R30 (380/85R30)	129 A8	TL	1400	55.1	378	14.9	4078	23
K9-169R30	16.9R30 (420/85R30)	137 A8	TL	1475	58.1	433	17.0	5070	23
K9-184R30	18.4R30 (480/85R30)	142 A8	TL	1545	60.8	467	18.4	5842	23
K9-169R34	16.9R34 (420/85R34)	139 A8	TL	1575	62.0	433	17.0	5357	23
K9-184R34	18.4R34 (460/85R34)	144 A8	TL	1645	64.8	467	18.4	6172	23
K9-169R38	16.9R38 (420/85R38)	141 A8	TL	1680	66.1	433	17.0	5677	23
K9-184R38	18.4R38 (460/85R38)	146 A8	TL	1750	68.9	467	18.4	6614	23
K9-208R38	20.8R38 (520/85R38)	153 A8	TL	1846	72.7	528	20.8	8047	23

FARM TIRES

BIAS REAR FARM



Deep and wide lug pattern gives excellent load carrying capacity and traction.



PART #	SIZE	PLY RATING	TT/TL	OVERALL DIAMETER		SECTION WIDTH		LOAD LIMIT (LBS)	PSI
				mm	inches	mm	inches		
K9-716-R1	7-16	6	TT	767	30.2	183	7.2	1100	45
K9-816-R1	8-16	6	TT	813	32.0	203	8.0	1390	45
K9-9516-R1	9.5-16	6	TT	846	33.3	239	9.4	1390	45
K9-8324-R1	8.3-24	8	TT	993	39.1	211	8.3	2030	45
K9-9524-R1	9.5-24	8	TL	1049	41.3	239	9.4	2440	41
K9-11224-R1	11.2-24	8	TL	1105	43.5	284	11.2	2750	35
K9-12424-R1	12.4-24	8	TL	1168	46.0	315	12.4	2830	33
K9-13624-R1	13.6-24	8	TL	1209	47.6	345	13.6	3300	30
K9-14924-R1	14.9-24	8	TL	1265	49.8	378	14.9	3960	26
K9-18426-R1	18.4-26	12	TL	1463	57.6	467	18.4	6615	33
K9-11228-R1	11.2-28	8	TL	1204	47.4	284	11.2	2910	35
K9-12428-R1	12.4-28	8	TL	1265	49.8	315	12.4	3410	35
K9-13628-R1	13.6-28	8	TL	1318	51.9	345	13.6	3630	32
K9-14928-R1	14.9-28	8	TL	1364	53.7	378	14.9	4180	26
K9-16928-R1	16.9-28	8	TL	1435	56.5	429	16.9	4800	25
K9-16930-R1	16.9-30	8	TL	1486	58.5	429	16.9	5070	25
K9-18430-R1	18.4-30	10	TL	1560	61.4	467	18.4	6390	28
K9-9532-R1	9.5-32	8	TT	1242	48.9	229	9.0	2700	34
K9-18434-R1	18.4-34	10	TL	1659	65.3	467	18.4	5840	26
K9-15538-R1	15.5-38	10	TL	1595	62.8	394	15.5	4740	26
K9-18438-R1	18.4-38	10	TL	1768	69.6	467	18.4	6000	26
K9-20838-R1	20.8-38	14	TL	1834	72.2	531	20.9	8540	32

BIAS FRONT FARM



Front tire pattern with low void ratio enhances grip performance and puncture resistance.

PART #	SIZE	PLY RATING	TT/TL	OVERALL DIAMETER		SECTION WIDTH		LOAD LIMIT (LBS)	PSI
				mm	inches	mm	inches		
K9-50012-R1	5.00-12	6	TT	579	22.8	145	5.7	990	51
K9-60012-R1	6.00-12	6	TL	584	23.0	152	6.0	882	36
K9-614-R1	6-14	6	TT	627	24.7	155	6.1	850	42
K9-60016-R1	6.00-16	8	TT	744	29.3	165	6.5	1760	58
K9-75016-R1	7.50-16	8	TT	808	31.8	203	8.0	2200	51
K9-75020-R1	7.50-20	8	TT	919	36.2	203	8.0	2380	48



Flat tread profile and deep rib provides for better lateral stability and longer life.

PART #	SIZE	PLY RATING	TT/TL	OVERALL DIAMETER		SECTION WIDTH		LOAD LIMIT (LBS)	PSI
				mm	inches	mm	inches		
K9-40012-F2	4.00-12	4	TL	528	20.8	112	4.4	660	52
K9-40015-F2	4.00-15	4	TL	615	24.2	114	4.5	715	50
K9-50015-F2	5.00-15	6	TL	653	25.7	140	5.5	803	55
K9-75L15-F2	7.5L-15	6	TL	765	30.1	208	8.2	1430	44
K9-95L15-F2	9.5L-15	8	TL	767	30.2	249	9.8	1870	44
K9-11L15-F2	11L-15	8	TL	790	31.1	267	10.5	2090	44
K9-55016-F2	5.50-16	8	TL	709	27.9	150	5.9	1430	58
K9-60016-F2	6.00-16	6	TL	744	29.3	165	6.5	1470	62
K9-65016-F2	6.50-16	6	TL	759	29.9	173	6.8	2030	55
K9-75016-F2	7.50-16	8	TL	808	31.8	203	8.0	2460	54
K9-100016-F2	10.00-16	8	TL	899	35.4	274	10.8	2670	41
K9-110016-F2	11.00-16	10	TL	968	38.1	320	12.6	3300	51
K9-40019-F2	4.00-19	6	TL	965	38.0	112	4.4	780	49
K9-75020-F2	7.50-20	8	TL	919	36.2	203	8.0	2270	49

FARM TIRES

IMPLEMENT



Flat profile provides less soil compaction while the shoulder minimizes field damage.



PART #	SIZE	PLY RATING	TT/TL	OVERALL DIAMETER		SECTION WIDTH		LOAD LIMIT (LBS)	PSI
				mm	inches	mm	inches		
K9-95L14-I1	9.5L-14	8	TL	734	28.9	239	9.4	2400	44
K9-11L14-I1	11L-14	8	TL	747	29.4	274	10.8	2460	36
K9-590L15-I1	5.90L-15	4	TL	658	25.9	152	6.0	1280	44
K9-670L15-I1	6.70L-15	10	TL	704	27.7	168	6.6	1600	44
K9-760L15-I1	7.60L-15	6	TL	719	28.3	191	7.5	2090	49
K9-95L15-I1	9.5L-15	8	TL	767	30.2	249	9.8	2460	44
K9-11L15-I1	11L-15	12	TL	790	31.1	267	10.5	3190	52
K9-125L15-I1	12.5L-15	12	TL	838	33.0	325	12.8	3850	52
K9-11L16-I1	11L-16	10	TL	795	31.3	203	8.0	2880	44
K9-14L161-I1	14L-16.1	12	TL	838	33.0	356	14.0	4670	44
K9-165L161-I1	16.5L-16.1	12	TL	1024	40.3	414	16.3	5670	41

K9



K9 POWER TIRES

POWER TIRES

SKID STEER



Classic skid steer design with overlapped center lug to provide stability while driving under heavy load conditions works well for all applications.



PART #	SIZE	PLY RATING	TT/TL	OVERALL DIAMETER		SECTION WIDTH		LOAD LIMIT (LBS)	PSI
				mm	inches	mm	inches		
K9-10165	10-16.5	10	TL	782	30.8	254	10.0	4710	75
K9-12165	12-16.5	12	TL	820	32.3	300	11.8	6090	80
K9-14175	14-17.5	14	TL	919	36.2	348	13.7	8540	80

Rectangular shoulder design for better durability and double layered center pattern provides higher level of self cleaning. Great for applications that need a premium quality skid steer tire.



PART #	SIZE	PLY RATING	TT/TL	OVERALL DIAMETER		SECTION WIDTH		LOAD LIMIT (LBS)	PSI
				mm	inches	mm	inches		
10-16.5	10	10	TL	782	30.8	273	10.7	4650	57
12-16.5	12	12	TL	845	33.3	314	12.4	6160	75

SKID STEER



Deep L4 lug pattern provides optimal tread life and non-directional tread face provides better grip on smooth surfaces.



PART #	SIZE	PLY RATING	TT/TL	OVERALL DIAMETER		SECTION WIDTH		LOAD LIMIT (LBS)	PSI
				mm	inches	mm	inches		
K9-12165-D	12-16.5	12	TL	932	36.7	348	13.7	6310	80

Puncture proof and flat free solid skid steer design provides maximum life and durability in any application.



PART #	SIZE	PLY RATING	TT/TL	OVERALL DIAMETER		SECTION WIDTH		LOAD LIMIT (LBS)	PSI
				mm	inches	mm	inches		
K9-10165-L	30X10-16	NA	NA	767	30.2	234	9.2	4963	NA
K9-10165-R	30X10-16	NA	NA	767	30.2	234	9.2	4963	NA
K9-12165-L	33X12-20	NA	NA	831	32.7	284	11.2	6600	NA
K9-12165-R	33X12-20	NA	NA	831	32.7	284	11.2	6600	NA

POWER TIRES

CONSTRUCTION



Angled rib provides good self cleaning and stable steering.

PART #	SIZE	PLY RATING	TT/TL	OVERALL DIAMETER		SECTION WIDTH		LOAD LIMIT (LBS)	PSI
				mm	inches	mm	inches		
K9-11L15-F3	11L-15	10	TL	813	32.0	279	11.0	2330	52
K9-11L16-F3	11L-16	10	TL	818	32.2	279	11.0	2750	64



Widely spaced large lugs provide optimal traction on hard surfaces and good self cleaning in muddy conditions.



PART #	SIZE	PLY RATING	TT/TL	OVERALL DIAMETER		SECTION WIDTH		LOAD LIMIT (LBS)	PSI
				mm	inches	mm	inches		
K9-1258018-R4	12.5/80-18	14	TL	988	38.9	307	12.1	4670	62
K9-16924-R4	16.9-24	10	TL	1308	51.5	439	17.3	7165	38
K9-175L24-R4	17.5L-24	10	TL	1270	50.0	445	17.5	6945	39
K9-195L24-R4	19.5L-24	12	TL	1318	51.9	495	19.5	7606	33

Deep lug and squared shoulder profile create a tread that will withstand the toughest conditions.



PART #	SIZE	PLY RATING	TT/TL	OVERALL DIAMETER		SECTION WIDTH		LOAD LIMIT (LBS)	PSI
				mm	inches	mm	inches		
K9-31155015-R1	31X15.50-15	10	TL	810	31.9	405	15.9	3300	60

FORKLIFT



Industrial deep tread design provides optimal traction on smooth surfaces while reducing heat build up in duty cycle operations. All forklift tires come as a tube, tire, and flap set.



PART #	SIZE	PLY RATING	TT/TL	OVERALL DIAMETER		SECTION WIDTH		LOAD LIMIT (LBS)	PSI
				mm	inches	mm	inches		
K9-5008	5.00-8	10	TT	467	18.4	132	5.2	2400	145
K9-6009	6.00-9	10	TT	541	21.3	165	6.5	2910	123
K9-65010	6.50-10	10	TT	594	23.4	180	7.1	3300	112
K9-70012	7.00-12	14	TT	691	27.2	201	7.9	4670	131
K9-28915	28X9-15 (8.15-15)	12	TT	719	28.3	216	8.5	6600	128
K9-75015	7.50-15	16	TT	772	30.4	211	8.3	6170	134
K9-82515	8.25-15	16	TT	856	33.7	239	9.4	7820	135

K9



K9 ATV TIRES

ATV TIRES

ATV



Classic directional tread pattern provides traction in all environments while the widely spaced lugs shed mud and debris.



PART #	SIZE	PLY RATING	TT/TL	OVERALL DIAMETER		SECTION WIDTH		LOAD LIMIT (LBS)	PSI
				mm	inches	mm	inches		
K9-251210	25X12-10	6	TL	638	25.1	290	11.4	495	7
K9-24812	24X8-12	6	TL	606	23.9	198	7.8	310	7
K9-25812	25X8-12	6	TL	638	25.1	200	7.9	340	7
K9-251012	25X10-12	6	TL	630	24.8	253	10.0	420	7
K9-26912	26X9-12	6	TL	662	26.1	219	8.6	410	7
K9-261112	26X11-12	6	TL	665	26.2	280	11.0	460	7

Non-directional tread pattern provides top notch handling and superior traction while giving a smoother ride. Available in standard or in the ultra-tough 12 ply-rated Run Flat version.



PART #	SIZE	PLY RATING	TT/TL	OVERALL DIAMETER		SECTION WIDTH		LOAD LIMIT (LBS)	PSI
				mm	inches	mm	inches		
K9-25812-HHD	25X8-12 RUN FLAT	12	TL	635	25.0	203	8.0	900	28
K9-251012-HHD	25X10-12 RUN FLAT	12	TL	635	25.0	254	10.0	1100	28
K9-26912-HHD	26X9-12 RUN FLAT	12	TL	650	25.6	223	8.8	1100	30
K9-261112-HHD	26X11-12 RUN FLAT	12	TL	650	25.6	290	11.4	1200	28
K9-26914-H	26X9-14	6	TL	662	26.1	219	8.6	395	7
K9-261114-H	26X11-14	6	TL	662	26.1	280	11.0	465	7
K9-27914-H	27X9-14	6	TL	686	27.0	219	8.6	410	7
K9-271114-H	27X11-14	6	TL	686	27.0	280	11.0	480	7

K9



K9 LAWN & GARDEN TIRES

LAWN AND GARDEN



Classic soft turf design that minimizes turf damage while providing stability and comfort.



PART #	SIZE	PLY RATING	TT/TL	OVERALL DIAMETER		SECTION WIDTH		LOAD LIMIT (LBS)	PSI
				mm	inches	mm	inches		
K9-4103504-TURF	4.10/3.50-4	4	TL	269	10.6	99	3.9	230	24
K9-114005-TURF	11X4.00-5	4	TL	270	10.6	101	4.0	325	46
K9-135006-TURF	13X5.00-6	4	TL	315	12.4	128	5.0	440	40
K9-136506-TURF	13X6.50-6	4	TL	320	12.6	145	5.7	480	28
K9-156006-TURF	15X6.00-6	4	TL	380	15.0	160	6.3	570	30
K9-166508-TURF	16X6.50-8	4	TL	415	16.3	167	6.6	615	28
K9-188508-TURF	18X8.50-8	4	TL	450	17.7	210	8.3	815	22
K9-189508-TURF	18X9.50-8	4	TL	460	18.1	235	9.3	1040	24
K9-208008-TURF	20X8.00-8	4	TL	500	19.7	239	9.4	965	22
K9-2010008-TURF	20X10.00-8	4	TL	505	19.9	253	10.0	1200	22

Provides better traction and lateral stability for larger machines while minimizing turf damage.



PART #	SIZE	PLY RATING	TT/TL	OVERALL DIAMETER		SECTION WIDTH		LOAD LIMIT (LBS)	PSI
				mm	inches	mm	inches		
K9-20100010-TURFS	20X10.00-10	4	TL	508	20.0	243	9.6	1160	22
K9-2385012-TURFS	23X8.50-12	4	TL	588	23.1	215	8.5	1120	22
K9-23105012-TURFS	23X10.50-12	4	TL	590	23.2	250	9.8	1340	20
K9-24120012-TURFS	24X12.00-12	6	TL	610	24.0	280	11.0	2260	32
K9-26120012-TURFS	26X12.00-12	6	TL	655	25.8	310	12.2	2450	35

LAWN AND GARDEN TIRES

LAWN AND GARDEN

For maximum mower traction and safety in hilly terrain and when pulling trailers.



PART #	SIZE	PLY RATING	TT/TL	OVERALL DIAMETER		SECTION WIDTH		LOAD LIMIT (LBS)	PSI
				mm	inches	mm	inches		
K9-135006-R1	13X5.00-6	2	TL	330	330	118	4.6	295	20
K9-156006-R1	15X6.00-6	6	TL	385	385	155	6.1	710	40
K9-166508-R1	16X6.50-8	6	TL	418	418	162	6.4	785	42
K9-189508-R1	18X9.50-8	4	TL	455	455	222	8.7	1040	24
K9-2010008-R1	20X10.00-8	4	TL	515	515	242	9.5	1190	22
K9-23105012-R1	23X10.50-12	6	TL	590	590	260	10.2	1760	32
K9-24120012-R1	24X12.00-12	6	TL	610	610	304	12.0	2270	32
K9-26120012-R1	26X12.00-12	8	TL	665	665	300	11.8	3020	50

Wide rib design provides "hit and skip" capability to stabilize zero turn mowers in rough terrain.



PART #	SIZE	PLY RATING	TT/TL	OVERALL DIAMETER		SECTION WIDTH		LOAD LIMIT (LBS)	PSI
				mm	inches	mm	inches		
K9-114005-RIB	11X4.00-5	4	TL	270	10.6	100	3.9	325	46
K9-135006-RIB	13X5.00-6	4	TL	322	12.7	120	4.7	440	40
K9-136506-RIB	13X6.50-6	4	TL	333	13.1	160	6.3	460	28
K9-156006-RIB	15X6.00-6	4	TL	380	15.0	160	6.3	570	30
K9-166508-RIB	16X6.50-8	4	TL	410	16.1	165	6.5	620	28
K9-188508-RIB	18X8.50-8	4	TL	455	17.9	210	8.3	815	22

LAWN AND GARDEN

Classic stud design reduces sideway skids and provides better slick surface traction.



PART #	SIZE	PLY RATING	TT/TL	OVERALL DIAMETER		SECTION WIDTH		LOAD LIMIT (LBS)	PSI
				mm	inches	mm	inches		
K9-4103504-STUD	4.10/3.50-4	4	TL	275	10.8	99	3.9	350	50
K9-4103506-STUD	4.10/3.50-6	4	TL	325	12.8	99	3.9	445	50
K9-4808-STUD	4.80-8	4	TL	420	16.5	120	4.7	670	42

Low rolling resistance, long tread life, and high load capacity in a classic tread design.



PART #	SIZE	PLY RATING	TT/TL	OVERALL DIAMETER		SECTION WIDTH		LOAD LIMIT (LBS)	PSI
				mm	inches	mm	inches		
K9-4103504-SAW	4.10/3.50-4	4	TL	275	10.8	99	3.9	350	50
K9-4103505-SAW	4.10/3.50-5	4	TL	300	11.8	99	3.9	380	50
K9-4103506-SAW	4.10/3.50-6	4	TL	325	12.8	99	3.9	445	50

Wide footprint and non-directional tread design provide unmatched stability and durability on turf and pavement alike.



PART #	SIZE	PLY RATING	TT/TL	OVERALL DIAMETER		SECTION WIDTH		LOAD LIMIT (LBS)	PSI
				mm	inches	mm	inches		
K9-188508-GOLF	18X8.50-8	4	TL	457	18.0	210	8.3	815	24

K9



K9 TRAILER TIRES

TRAILER

Squared shoulder provides better sidewall protection while sawtooth tread design increases contact patch surface.



PART #	SIZE	PLY RATING	TT/TL	OVERALL DIAMETER		SECTION WIDTH		LOAD LIMIT (LBS)	PSI
				mm	inches	mm	inches		
K9-4808	4.80-8	6	TL	418	16.5	120	4.7	745	90
K9-5708	5.70-8	6	TL	460	18.1	155	6.1	910	75
K9-48012	4.80-12	6	TL	520	20.5	118	4.6	990	90
K9-53012	5.30-12	6	TL	545	21.5	139	5.5	1050	80

Wide, non-directional tread reduces trailer noise and provides better control when steering heavy loads.



PART #	SIZE	PLY RATING	TT/TL	OVERALL DIAMETER		SECTION WIDTH		LOAD LIMIT (LBS)	PSI
				mm	inches	mm	inches		
K9-1858508	18.5X8.50-8	6	TL	480	18.9	213	8.4	940	
K9-2058010	20.5X8.0-10	10	TL	520	20.5	205	8.1	1535	50
									90

Classic radial trailer rib paired with wrap around shoulder tread design provides new levels of stability, durability, and comfort in a radial trailer tire.



PART #	SIZE	PLY RATING	TT/TL	OVERALL DIAMETER		SECTION WIDTH		LOAD LIMIT (LBS)	PSI
				mm	inches	mm	inches		
K9-17580R13	ST175/80R13	8	TL	606	23.9	178	7.0	1610	68
K9-20575R14	ST205/75R14	6	TL	660	26.0	205	8.1	1760	50
K9-21575R14	ST215/75R14	6	TL	675	26.6	211	8.3	1870	50
K9-20575R15	ST205/75R15	8	TL	682	26.9	208	8.2	2150	65
K9-22575R15	ST225/75R15	10	TL	714	28.1	225	8.9	2830	80
K9-23580R16	ST235/80R16	10	TL	777	30.6	235	9.3	3520	80
K9-23585R16	ST235/85R16	14	TL	806	31.7	236	9.3	4000	95

K9



K9 WHEELS

K9 WHEELS

WHEELS

STAMPED WHITE



PART #	SIZE	STYLE	BOLT PATTERN	CENTER BORE	LOAD LIMIT (LBS)
K9-837544-STW	8X3.75	STAMPED	4 ON 4	2.81	1075
K9-837545-STW	8X3.75	STAMPED	5 ON 4.5	2.81	1075
K9-8537544-STW	8X5.375	STAMPED	4 ON 4	2.81	900
K9-8744-STW	8X7	STAMPED	4 ON 4	2.81	950
K9-87545-STW	8X7	STAMPED	5 ON 4.5	2.81	950
K9-10644-STW	10X6	STAMPED	4 ON 4	2.81	1800
K9-106545-STW	10X6	STAMPED	5 ON 4.5	2.81	1800

WHITE SPOKE



PART #	SIZE	STYLE	BOLT PATTERN	CENTER BORE	LOAD LIMIT (LBS)
K9-12444-WS	12X4	SPOKE	4 ON 4	2.81	1220
K9-124545-WS	12X4	SPOKE	5 ON 4.5	3.19	1220
K9-1345545-WS	13X4.5	SPOKE	5 ON 4.5	3.19	1660
K9-146545-WS	14X6	SPOKE	5 ON 4.5	3.19	1870
K9-155545-WS	15X5	SPOKE	5 ON 4.5	3.19	1870
K9-156545-WS	15X6	SPOKE	5 ON 4.5	3.19	2600
K9-156555-WS	15X6	SPOKE	5 ON 5.5	3.19	2600
K9-156655-WS	15X6	SPOKE	6 ON 5.5	4.28	2850
K9-166865-WS	16X6	SPOKE	8 ON 6.5	5.15	3760

K9 WHEELS

WHEELS

GALVANIZED SPOKE



PART #	SIZE	STYLE	BOLT PATTERN	CENTER BORE	LOAD LIMIT (LBS)
K9-124545-GW	12X4	SPOKE	5 ON 4.5	3.19	1220
K9-1345545-GW	13X4.5	SPOKE	5 ON 4.5	3.19	1660
K9-145545-GW	14X5	SPOKE	5 ON 4.5	3.19	1870
K9-155545-GW	15X5	SPOKE	5 ON 4.5	3.19	1870
K9-166865-GW	16X6	SPOKE	8 ON 6.5	5.15	3760

SILVER MOD



PART #	SIZE	STYLE	BOLT PATTERN	CENTER BORE	LOAD LIMIT (LBS)
K9-155545-SM	15X5	MODULAR	5 ON 4.5	3.19	1870
K9-15555-SM	15X5	MODULAR	5 ON 5	3.30	1870
K9-155555-SM	15X5	MODULAR	5 ON 5.5	3.30	1870
K9-156655-SM	15X6	MODULAR	6 ON 5.5	4.28	2850
K9-166655-SM	16X6	MODULAR	6 ON 5.5	4.28	3760
K9-166865-SM	16X6	MODULAR	8 ON 6.5	5.15	3760

NOTES

NOTES

NOTES

The All New K9 12 Ply Rated Run-Flat ATV/UTV Tire

**Run-flat rated:
300 miles @ 30 mph @ 0 psi**



PUREBRED TREADS



PUREBRED TREADS

