



**SUPERNOVA  
INTERNATIONAL**

# **RETAIL CATALOG**

**2022**

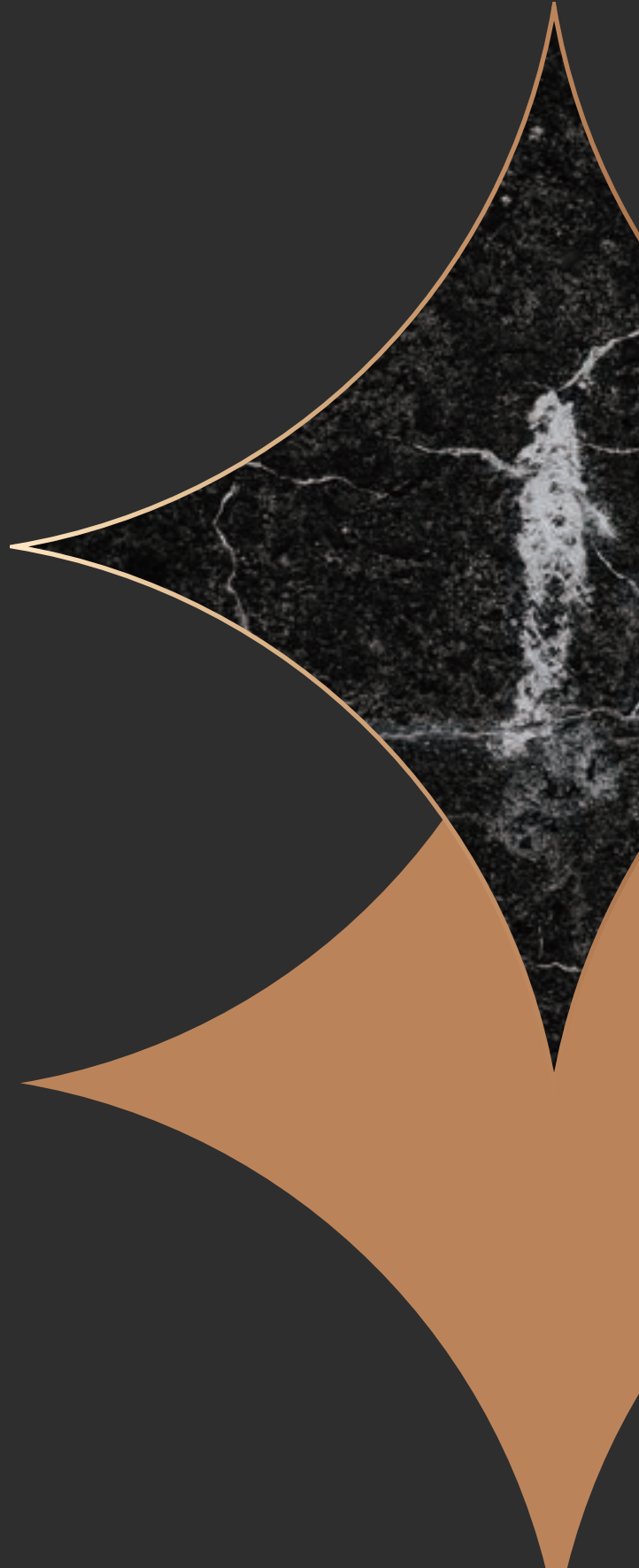


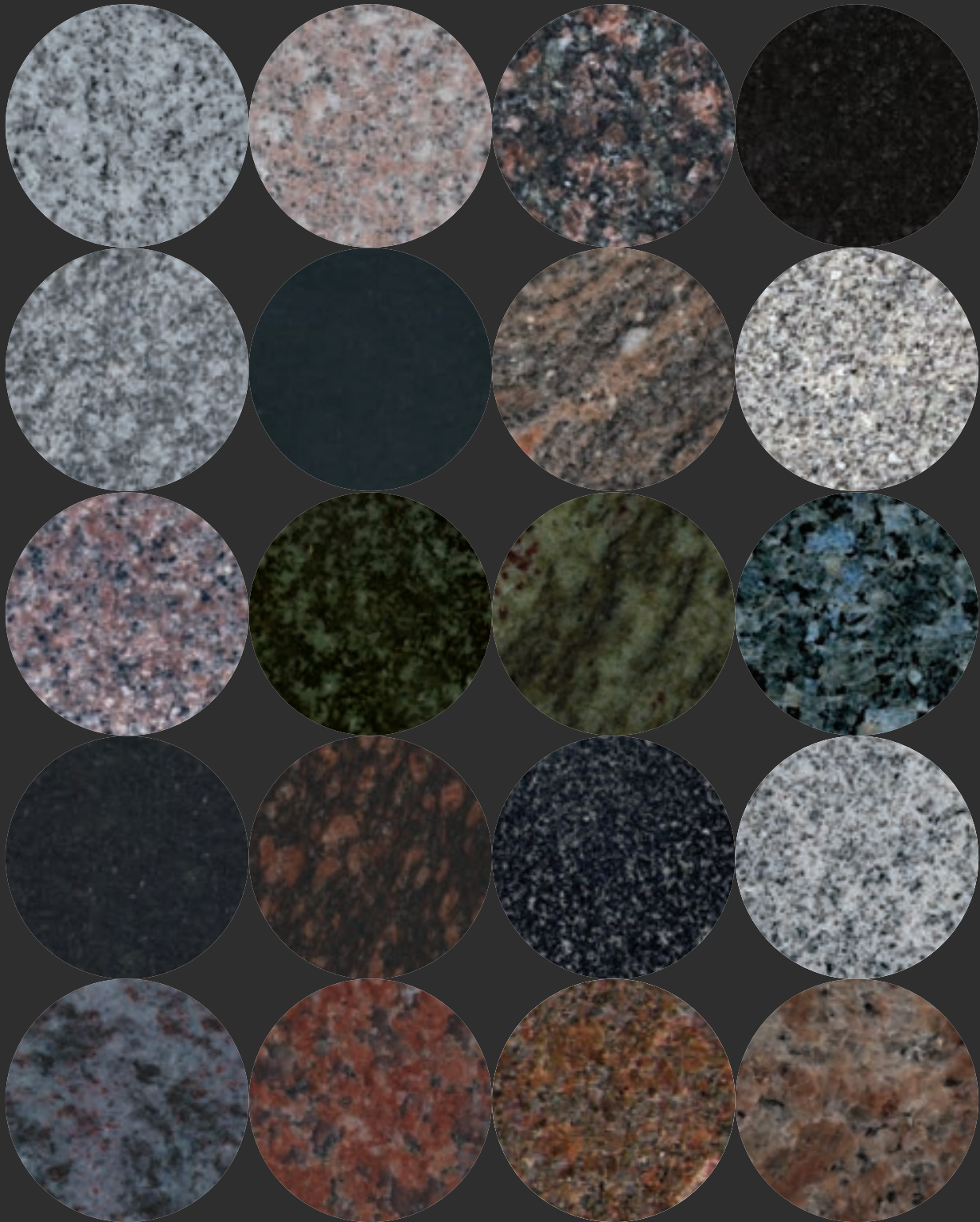
TABLE OF  
**CONTENTS**

- Statue Monuments ..... 04
- Plura Memorials ..... 14
  - Plura Designer Series ..... 15
  - All Polished Design ..... 21
- Legacy Memorials ..... 22
- Cremation Solutions ..... 30
- Cremation Garden Urns ..... 40
- Cremation Garden Sets ..... 41
- Heirloom Memorials ..... 42
- Standard Collection..... 46
- Benches & Chairs ..... 52
- Companion Pieces ..... 58
  - Granite Vases ..... 59
  - Bird Baths ..... 60
  - Garden Planters ..... 60
  - Solar Lights ..... 61
- Most Loved Products..... 63
- Markers ..... 64
  - Slant ..... 65
  - Flat..... 68
  - Bevel ..... 69
- Wooden Urns..... 71
- Laser-able Items..... 72
  - Pet Memorials..... 73
  - Plaques..... 74

# THE BEAUTY OF GRANITE

## A COLOR FOR EVERYONE

\*Photos are a representation of color. Actual colors may differ slightly.



1ST ROW: Royal Gray, Carnation Pink, India Mahogany, Flash Black // 2ND ROW: Super Gray, Jet Black, Paradiso, Silver Gray // 3RD ROW: SD Pink, Forest Green, Tropical Green, Blue Pearl // 4TH ROW: Night Black, Cat's Eye, Confetti Black, Georgia Gray // 5TH ROW: Bahama Blue, India Red, Dakota Mahogany, Morning Rose.



# STATUE MONUMENTS

Both stylish and unique, no two Statue Monuments look alike. This is no mistake — each Statue Monument is hand worked by a crew of talented stone-carving artisans with stand-out skills and meticulous attention to detail.





Back View



Detail

## STM021 RECLINE

Statue Monuments are more than just a pretty face. By carving both sides, our statues are beautiful from all angles!

Size **Die:** 2-6 x 0-8 x 3-8 **Base:** 3-6 x 1-2 x 0-8 **Weight:** 1761 lbs.

When special ordering your Statue Monuments, your sales representative can send images of your exact statue before it is shipped.



Back View

## STM020

Size **Die:** 4-6 x 0-8 x 3-0 **Base:** 6-0 x 1-2 x 0-8 **Weight:** 2741 lbs.



**STM042**

Size **Die:** 2-0 x 0-8 x 3-0 **Base:** 3-0 x 1-2 x 0-8 **Weight:** 1723 lbs.



**STM050**

Size **Die:** 2-2 x 0-6 x 2-8 **Base:** 3-0 x 1-0 x 0-6 **Weight:** 875 lbs.



**STM005**

Size **Die:** 2-6 x 0-8 x 3-8 **Base:** 3-6 x 1-2 x 0-8 **Weight:** 1761 lbs.



**STM013**

Size **Die:** 2-6 x 0-8 x 3-10 **Base:** 3-6 x 1-2 x 0-8 **Weight:** 1817 lbs.



## STM024

Size **Die:** 2-6 x 0-6 x 3-4 **Base:** 3-6 x 1-2 x 0-8 **Weight:** 1651 lbs.

**STATUE MONUMENTS**  
 With professionally trained artists who have been hand-crafting top-of-the-line Statue Monuments for many years, a dedication to quality control, and a great selection of models available (both in-stock and special order) our 3D Statue Monuments are the perfect product to take your business to the next level!



Back View



Detail



## STM022

Size **Die:** 4-6 x 0-8 x 3-0 **Base:** 6-0 x 1-2 x 0-8 **Weight:** 2724 lbs.



Back View



Detail

## WHY CHOOSE A STATUE MONUMENT?

Statue monuments make a statement. The size and height of a statue monument guarantees that it will be noticed by all visiting the cemetery.

They also have the benefit of having room for a personalized photo collage. Memorialized your loved ones likeness forever by having it etched in stone. You can have their smiling face to greet you every time you go to visit them.



STM031 See page 12 for details

# CHOOSE YOUR STYLE

### Beautiful from all angles.

For a style that has been described as “incredible” order your Statue Monuments with a back carving.



Back view of STM003 with face & back carving

### Need more space to sandblast?

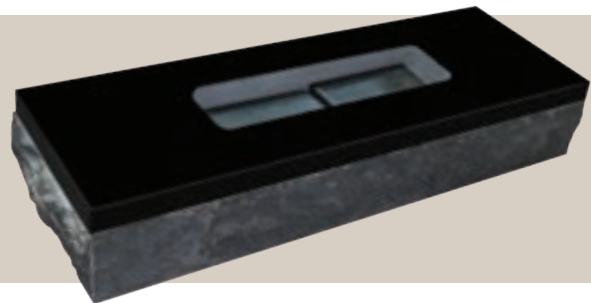
Purchase your Statue Monuments with no back carving, as this doubles your space for sandblast or laser artwork.



Back view of STM003 with front only carving

## CREMATION BASE

Transform any monument into a Cremation Memorial with a revolutionary cremation base option. Pre-cut chamber in base allows for urn containers to be placed within!



### STATUE MONUMENT BASE OPTIONS

Most often our Statue Monuments are priced with a bevel front polished base. Ask your sales representative about pricing on other base styles.



Bevel front polish base



Polished margin base



# STM003 IN 4 SIZES

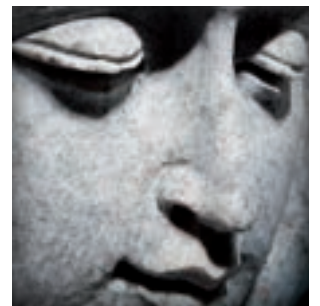


## EACH STATUE MONUMENT IS 100% UNIQUE!

No two statues will ever look identical, even when they share the same model number. This is no mistake - as with all great artwork, the value of our Statue Monuments is directly related to their individual uniqueness that is created by the hands of our master carvers.



Back View



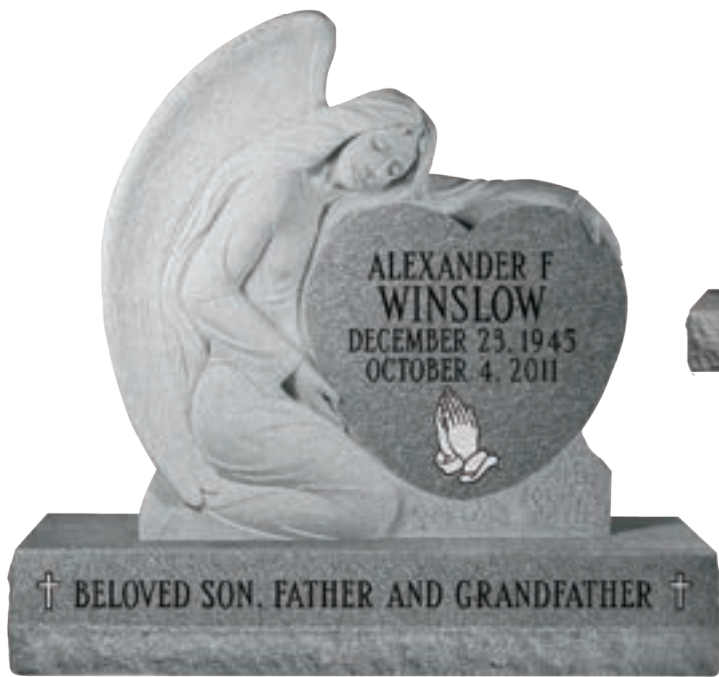
Detail

**Die:** 2-0 x 0-6 x 2-0  
**Base:** 2-6 x 1-2 x 0-6  
**Weight:** 1312 lbs.

**Die:** 2-6 x 0-6 x 2-6  
**Base:** 3-6 x 1-2 x 0-6  
**Weight:** 1355 lbs.

**Die:** 2-6 x 0-8 x 2-6  
**Base:** 3-6 x 1-2 x 0-8  
**Weight:** 1374 lbs.

**Die:** 3-0 x 0-8 x 2-8  
**Base:** 4-0 x 1-2 x 0-8  
**Weight:** 1587 lbs.



ALEXANDER F  
WINSLOW  
DECEMBER 23, 1945  
OCTOBER 4, 2011

† BELOVED SON, FATHER AND GRANDFATHER †



Back View



Detail

### STM003F

Size **Die:** 3-0 x 0-8 x 3-0 **Base:** 4-0 x 1-2 x 0-8 **Weight:** 1816 lbs.



Back View

Rockwell

Samuel J.  
Mar. 24, 1940  
June 6, 2004

Ruby M.  
Sept. 20, 1907  
May 20, 2000

*"There are still spots in the world of our memory of how you are going to be."*

### STM010

Size **Die:** 3-6 x 0-8 x 3-0 **Base:** 4-6 x 1-2 x 0-8 **Weight:** 2093 lbs.



Back View

SAINT  
MATT W.

Dec. 28, 1955 - Oct. 22, 2009

Ever Loved  
Ever Missed

AUTUMN LEAF  
Autumn leaves are scattered  
all over the place  
and I miss you  
every day  
I hope you  
are enjoying  
the beautiful  
fall weather  
I love you  
Matt's Family

### STM011

Size **Die:** 3-8 x 0-8 x 3-0 **Base:** 4-6 x 1-2 x 0-8 **Weight:** 2160 lbs.



**STM023**

Size **Die:** 2-0 x 0-8 x 3-0 **Base:** 3-0 x 1-2 x 0-8 **Weight:** 1578 lbs.



**STM102 LIGHTHOUSE**

Size **Die:** 3-4 x 0-8 x 3-0 **Column:** 0-11 x 0-11 x 3-6  
**Base:** 5-0 x 1-2 x 0-8 **Weight:** 2395 lbs.



**STM001**

Size **Die:** 5-0 x 0-8 x 3-0 **Base:** 6-0 x 1-2 x 0-8 **Weight:** 2924 lbs.



Back View



Detail





Back View

### STM031

Size **Die:** 2-6 x 0-8 x 2-8 **Base:** 3-0 x 1-2 x 0-8 **Weight:** 1429 lbs.



### STM033C

Size **Die:** 2-8 x 0-8 x 3-4 **Base:** 3-6 x 1-2 x 0-8 **Weight:** 1924 lbs.



Back View



Detail

### STM008

Size **Die:** 2-6 x 0-8 x 3-8 **Base:** 3-6 x 1-2 x 0-8 **Weight:** 1761 lbs.





Detail

**STM032B**

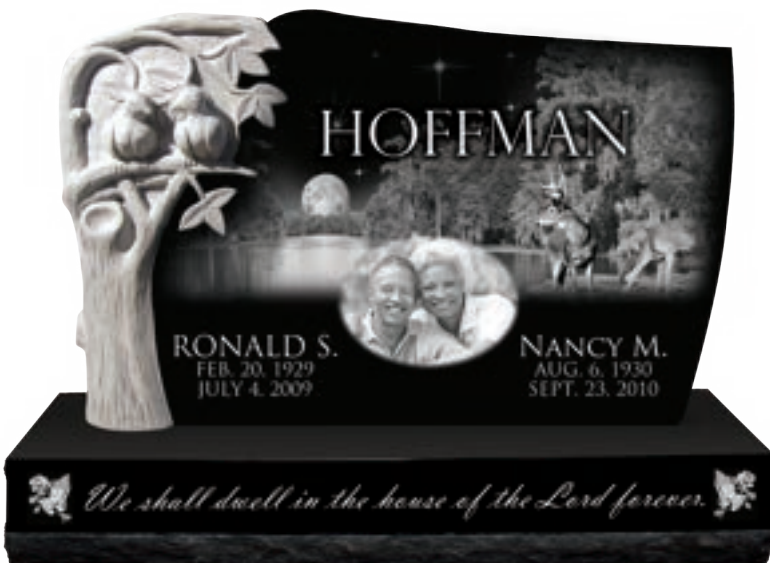
Size **Die:** 3-0 x 0-8 x 2-8 **Base:** 4-0 x 1-2 x 0-8 **Weight:** 1683 lbs.



Back View

**STM032B**

Size **Die:** 3-0 x 0-8 x 2-8 **Base:** 4-0 x 1-2 x 0-8 **Weight:** 1683 lbs.



Detail

**STM030**

Size **Die:** 3-6 x 0-8 x 2-2 **Base:** 4-0 x 1-2 x 0-8 **Weight:** 1628 lbs.



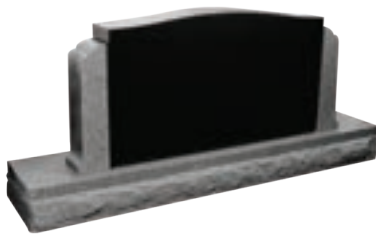
# PLURA MEMORIALS

Plura from the Latin meaning “more” perfectly describes these unique memorial designs as well as our most passionate aim: to bring you more. With Plura Memorials not only do you get unlimited combinations of styles and designs, you also benefit by receiving more product for your dollar.

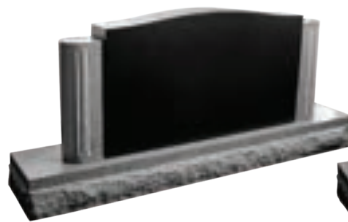
# SIX WAYS TO PERSONALIZE



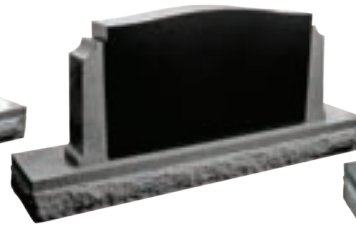
1. Add color with a colored laser etching or personalized diamond hand etching.
2. Customize your choice of pillar with timeless sandblast carving.
3. Laser engrave directly onto black granite or insert a laser etched tile into any monument color.
4. Combine any color base with any die to create your own look.
5. Choose from four unique pillar styles shown below.
6. Add customized sandblast or laser etch lettering.



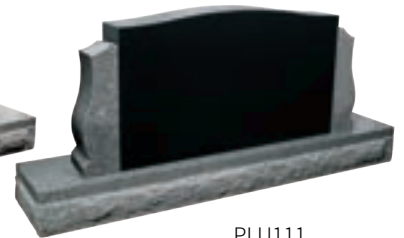
PLU121



PLU101



PLU131



PLU111

## THE FIRST FULLY CUSTOMIZABLE MEMORIAL!

Begin by choosing your desired monument color and pillar design of your choice. Let your creativity soar when you add sandblast on pillars and laser etching or diamond hand etching on black granite.

| Size  | Weight    |
|---|-----------|
| <b>Jet Black Die:</b> 2-6 x 0-6 x 1-8 serp top P5<br><b>2 Super Gray Pillars:</b> 0-5.5 x 0-5.5 x 1-5.5 (approx.)<br><b>Super Gray Base:</b> 4-6 x 1-0 x 0-6 pft 1.5" pmg brp | 986 lbs.  |
| <b>Jet Black Die:</b> 3-0 x 0-6 x 1-8 serp top P5<br><b>2 Super Gray Pillars:</b> 0-5.5 x 0-5.5 x 1-5.5 (approx.)<br><b>Super Gray Base:</b> 5-0 x 1-0 x 0-6 pft 1.5" pmg brp | 1118 lbs. |
| <b>Jet Black Die:</b> 3-0 x 0-6 x 2-0 serp top P5<br><b>2 Super Gray Pillars:</b> 0-5.5 x 0-5.5 x 1-5.5 (approx.)<br><b>Super Gray Base:</b> 5-0 x 1-0 x 0-6 pft 1.5" pmg brp | 1218 lbs. |
| <b>Jet Black Die:</b> 3-0 x 0-8 x 2-0 serp top P5<br><b>2 Super Gray Pillars:</b> 0-7 x 0-7 x 1-9<br><b>Super Gray Base:</b> 5-0 x 1-2 x 0-8 pft 2" pmg brp                   | 1810 lbs. |
| <b>Jet Black Die:</b> 3-6 x 0-8 x 2-2 serp top P5<br><b>2 Super Gray Pillars:</b> 0-7 x 0-7 x 1-11<br><b>Super Gray Base:</b> 5-6 x 1-2 x 0-8 pft 2" pmg brp                  | 2099 lbs. |



\*Pillars available in other sizes. Call for more information.





Castle Pillar

Shown in Jet Black and Super Gray

Available by Special Order only.

## PLU100

Size **Die:** 3-0 x 0-6 x 1-8 serp top P5  
**Base:** 5-0 x 1-0 x 0-6 pft 1.5" pmg brp  
**2 Pillars:** 0-5.5 x 0-8 x 1-6.5 P4  
**Weight:** 1184 lbs.



Shown in Jet Black and Super Gray

Available by Special Order only.

## PLU02

Size **Lg. Die:** 3-0 x 0-6 x 2-0 P5  
**Sm. Die:** 1-0 x 0-6 x 2-2 P5  
**Base:** 5-0 x 1-0 x 0-6 pft 1.5" pmg brp  
**Weight:** 1241 lbs.



Shown in Jet Black

Available by Special Order only.

## PLU11

Size **2 Wings:** 1-10 x 0-6 x 1-10 1/2 serp P5  
**Center Plinth:** 1-8 x 0-8 x 0-6 P5  
**Base:** 6-0 x 1-0 x 0-6 pft 1.5" pmg brp  
**Turned Vase:** 0-6 x 1-0 all polished  
**Weight:** 1429 lbs.





Shown in Super Gray sub cap and sub base are not polished

## PILLAR01

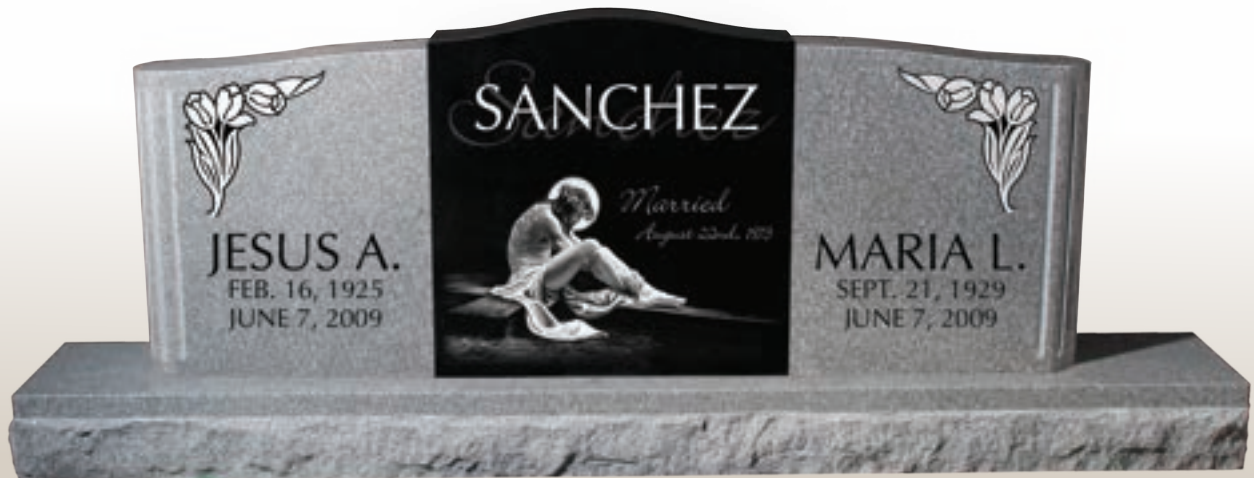
Size **Cap:** 3-4 x 1-0 x 0-6 apex P5 **Sub Cap:** 3-2 x 0-10 x 0-6  
**2 Columns:** 0-9 x 0-9 x 3-4 P5, round  
**Sub Base:** 3-4 x 1-0 x 0-6  
**Base:** 4-0 x 1-4 x 0-8 pft 2" pmg brp **Weight:** 2384 lbs.



Shown in Jet Black Available by Special Order only.

## PILLAR02

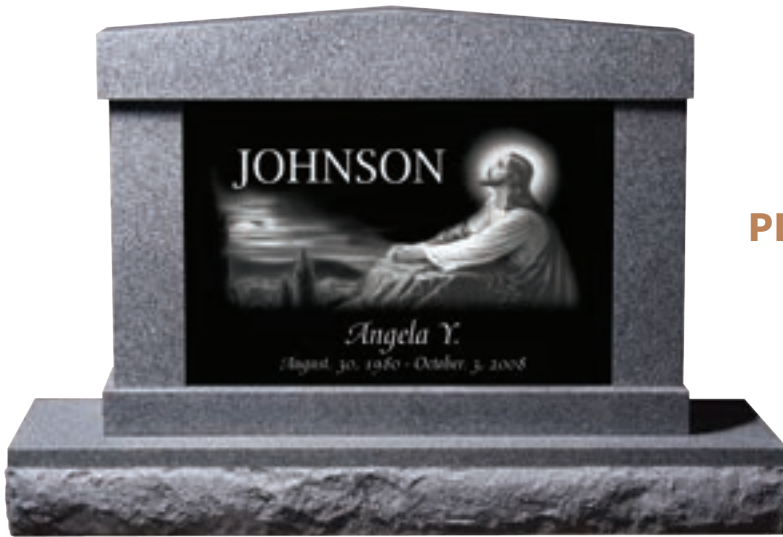
Size **Cap:** 3-6 x 1-0 x 1-0 **2 Columns:** 0-9 x 0-9 x 3-6  
**Sub Base:** 3-4 x 1-0 x 0-6  
**Base:** 4-6 x 1-2 x 0-8 pft 2" pmg brp **Weight:** 2384 lbs.



Shown in Jet Black and Super Gray

## PLU10

Size **Die:** 2-0 x 0-6 x 2-0 serp top P5  
**2 Wings:** 1-10 x 0-6 x 1-10 1/2 serp with rounded ends and hand carved flutes P5  
**Base:** 7-0 x 1-0 x 0-6 pft 1.5" pmg brp  
**Weight:** 1767 lbs.



**PLU09**

Available by Special Order only.

**Small**

**Cap:** 3-11 x 0-6 x 0-6 all pol.  
 roof top serp top or apex top  
**2 Supports:** 0-5 x 0-5 x 1-8 all pol.  
**Sub Base:** 3-11 x 0-6 x 0-3 all pol.  
**Base:** 4-6 x 1-0 x 0-6 pft 1.5" pmg brp  
**Center Panel:** 3-2 x 0-2.75 x 1-8  
**Weight:** 1013 lbs.

**Large**

**Cap:** 4-4 x 0-8 x 0-8 all pol.  
 roof top serp top or apex top  
**2 Supports:** 0-6 x 0-6 x 1-8 all pol.  
**Sub Base:** 4-2 x 0-8 x 0-4 all pol.  
**Base:** 5-0 x 1-2 x 0-8 pft 2" pmg brp  
**Center Panel:** 3-6 x 0-3 x 1-8  
**Weight:** 1651 lbs.



**PLU03**

Shown in Jet Black and SD Pink  
 Available by Special Order only.

**Small**

**Die:** 2-6 x 0-6 x 1-8 serp top P5  
**Church Top Die:** 1-0 x 0-6 x 2-4 P5  
**Base:** 4-6 x 1-0 x 0-6 pft 1.5" pmg brp  
**Weight:** 1028 lbs.

**Large**

**Die:** 3-0 x 0-6 x 1-8 serp top P5  
**Church Top Die:** 1-0 x 0-6 x 2-4 P5  
**Base:** 5-0 x 1-0 x 0-6 pft 1.5" pmg brp  
**Weight:** 1152 lbs.

**GRANITE STATUES**  
 The ultimate accessory. Another great feature within this monument series is that many models such as our PILLAR01 and PILLAR02 are built as perfect vessels for our fine line of granite statues. We can create just about any statue—given enough details and photos!





Shown in Bahama Blue and Jet Black

Shown in Jet Black and SD Pink

Shown in Jet Black and SD Pink

### PLU06

**Die:** 2-0 x 0-8 x 4-0 P5  
**Base:** 6-0 x 1-2 x 0-8 pft 2" pmg brp  
**2 Wings:** 1-10 x 0-6 x 1-10 P4  
**Weight:** 2617 lbs.  
 Available by Special Order only.

### PLU07

**Die:** 2-0 x 0-8 x 4-0 P5  
**Base:** 6-0 x 1-2 x 0-8 pft 2" pmg brp  
**2 Wings:** 1-10 x 0-6 x 1-10 P4  
**Weight:** 2617 lbs.  
 Available by Special Order only.

### PLU08

**Die:** 2-0 x 0-8 x 3-0 P5  
**Base:** 6-6 x 1-2 x 0-8 pft 2" pmg brp  
**2 Wings:** 1-10 x 0-6 x 1-10 P4  
**Weight:** 2077 lbs.  
 Available by Special Order only.



Shown in Night Black and Super Gray

### PLU01

**Die:** 0-6 x 0-6 x 1-10  
**Die:** 1-0 x 0-8 x 2-0  
**Die:** 1-0 x 0-8 x 2-0  
**Base:** 5-0 x 1-0 x 0-6 pft 1.5" pmg brp  
**Weight:** 1281 lbs.  
 Available by Special Order only.



Shown in Jet Black and Super Gray

### PLU04

**Die:** 2-6 x 0-6 x 3-6  
**Pedestal:** 2-0 x 0-10 x 0-10  
**Base:** 5-0 x 1-0 x 0-6 pft 1.5" pmg brp  
**Weight:** 1616 lbs.  
 Statue not included in price. See page 62 for pricing.  
 Available by Special Order only.





**PLU134**

**THESE PLURA MEMORIALS** feature a black die that is perfect for personalizing with a laser etching and adorned with two rounded Super Gray pillars. Get creative with these new additions to our line of already loved Plura Memorials!



**PLU132**



**PLU133**

**PLU134**  
**PLU132**  
**PLU133**

**Die:** 3-0 x 0-6 x 2-0 PLU134 is P2 PLU132/PLU133 are P5  
**R. Column:** 0-5.5 x 0-5.5 x 2-0 L. Column: 0-5.5 x 0-5.5 x 1-8  
**Base:** 4-6 x 1-0 x 0-6 1.5" pmg brp Weight: 1227 lbs.



Shown in Jet Black and Super Gray

**PLU13**

**Size Die:** 2-0 x 0-6 x 3-0 serp top, P5  
**Base:** 7-0 x 1-0 x 0-6 pft. 1.5" pmg, brp  
**2 Wings:** 1-10 x 0-6 x 1-10 1/2 serp, P5 Weight: 1656 lbs.



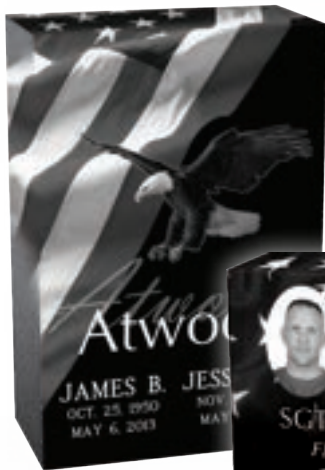
**PLU12**

**2 Wings:** 2-2 x 0-6 x 1-10 1/2 serp, P5  
**Center Plinth:** 1-8 x 0-8 x 0-6 P5  
**Base:** 6-6 x 1-0 x 0-6 pft, 1.5" pmg, brp

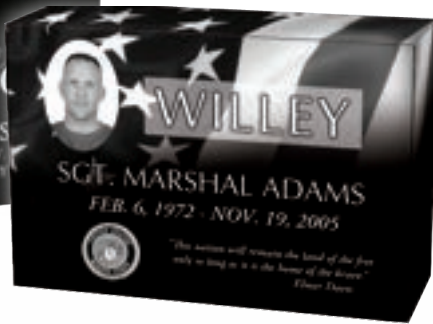


# EXCLUSIVE ALL POLISHED DESIGN!

This stunning all polished design allows for personalization on every surface!



horizontal or vertical



Add pillars or your favorite companion piece to make a lasting impression



| Vertical Sizes (Jet Black)   | Weight   |
|--|----------|
| <b>Die:</b> 2-0 x 0-6 x 3-0 P6<br><b>Base:</b> 2-10 x 1-2 x 0-6 5" bev frt pol | 897 lbs. |
| <b>Die:</b> 2-0 x 0-6 x 3-6 P6<br><b>Base:</b> 2-10 x 1-2 x 0-6 5" bev frt pol | 987 lbs. |
| <b>Die:</b> 2-4 x 0-8 x 4-0 P6<br><b>Base:</b> 3-0 x 1-2 x 0-8 5" bev frt pol  | 987 lbs. |

Available by Special Order only.

| Vertical Sizes (Jet Black)   | Weight    |
|--|-----------|
| <b>Die:</b> 2-0 x 0-6 x 1-8 P6<br><b>Base:</b> 3-0 x 1-2 x 0-6 5" bev frt pol  | 681 lbs.  |
| <b>Die:</b> 3-0 x 0-6 x 1-8 P6<br><b>Base:</b> 4-0 x 1-2 x 0-6 5" bev. ft. pol | 969 lbs.  |
| <b>Die:</b> 3-0 x 0-6 x 2-0 P6<br><b>Base:</b> 4-0 x 1-2 x 0-6 5" bev frt pol  | 1063 lbs. |
| <b>Die:</b> 3-6 x 0-6 x 2-0 P6<br><b>Base:</b> 4-6 x 1-2 x 0-6 5" bev frt pol  | 897 lbs.  |
| <b>Die:</b> 4-0 x 0-8 x 2-4 P6<br><b>Base:</b> 5-0 x 1-2 x 0-8 5" bev frt pol  | 987 lbs   |



## LEGACY MEMORIALS

The personalization of a monument is not only how it is sandblasted or laser etched, it is also in the fundamental form and color of the stone itself. Although our Legacy Memorials may not replace the ever-popular and traditional serif top monuments, they are a great way to differentiate yourself from your competitors with very little extra cost.



**MAKE A STATEMENT!**  
 The HS02 is a naturally stunning memorial. Its unique curves and chambers are details that make it a top selling monument. Create a beautiful memorial with a striking impression by adding an ultra-personalized laser etching.

**HS02**  
 HS02 IN JET BLACK



**OV08**  
 OV08 IN JET BLACK



**DH01**  
 DH01 IN SUPER GRAY



**RT05**  
 RT05 IN NIGHT BLACK



**SP05**  
 SP05 IN SD PINK



**MT03**  
 MT03 IN SUPER GRAY





CL02 IN SUPER GRAY



RT01 IN INDIA MAHOGANY



RT03 IN JET BLACK



OV03 IN SUPER GRAY



CR23 IN NIGHT BLACK

### THREE REASONS TO OFFER LEGACY MEMORIALS:

- 1) Great Price. Why buy Serp Tops when you can buy Legacy Memorials at roughly the same price?
- 2) Self Expression. Our Legacy Memorials are as unique as your customer!
- 3) Customer Retention. It will be hard for your customers to price compare after they've seen our incomparable line of Legacy Memorials!



SD02 IN JET BLACK



OT03 IN SUPER GRAY



CL01 IN JET BLACK



CL04 IN SD PINK



AT01 IN INDIA RED



DD499 IN JET BLACK



CC05 IN JET BLACK



CC01 IN NIGHT BLACK

## RAISE THE STANDARD WITH RAISED HAND CARVINGS!



Available by Special Order only.



### A POPULAR ADDITION TO ANY MEMORIAL

Raised hand carvings add another dimension of elegance. Our talented stone-carving artisans can carve just about anything. Simply supply us with images and we can create any personalized look. Call a sales rep for details and pricing for this superior technique.

Interested in adding a Raised Hand Carving? Call a sales representative for a quote.





HS10 IN JET BLACK



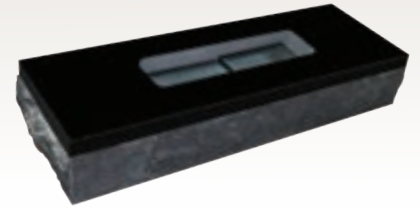
DM02 IN BAHAMA BLUE

## UNIQUE SHAPES

paired with the best colors make our line of Legacy Memorials stand out from the rest! Create a finished monument by adding our in-house sandblast laser etching or hand etching. Make us your one-stop-shop!

## CREMATION BASE

Transform any monument into a Cremation Memorial with a revolutionary cremation base option. Pre-cut chamber in base allows for urn containers to be placed within!



TH01 IN JET BLACK



BK01 IN JET BLACK



TH01 IN JET BLACK



CR21



CR22

CR21 & CR22: Available in 2 Sizes

### Small

**Die:** 1-8 x 0-6 x 3-0 P5  
**Base:** 2-6 x 1-2 x 0-6 pft  
 4.5" bev. ft. pol.  
**Weight:** 789 lbs.

### Large

**Die:** 1-10 x 0-6 x 3-6 P5  
**Base:** 3-0 x 1-2 x 0-6 pft  
 4.5" bev. ft. pol.  
**Weight:** 930 lbs.



TD03



**TD03 Die:** 2-0 x 0-6 x 2-10 special cut  
**Base:** 2-10 x 1-0 x 0-6, 1.5" pmg, brp  
**Weight:** 795 lbs.

**TD03 Die:** 3-0 x 0-8 x 3-6 special cut  
**Base:** 4-0 x 1-2 x 0-8, 2" pmg, brp  
**Weight:** 983 lbs.

TD01



**TD01 Die:** 2-4 x 0-6 x 2-8 special cut  
**Base:** 3-4 x 1-0 x 0-6, 1.5" pmg, brp  
**Weight:** 892 lbs.

**TD01 Die:** 3-0 x 0-8 x 3-6 special cut  
**Base:** 4-0 x 1-2 x 0-8, 2" pmg, brp  
**Weight:** 1446 lbs.

SH04



Round or square base available

**SH04 Die:** 2-0 x 0-6 1-10 special cut  
**Base:** 2-10 x 1-0 x 0-6, 1.5" pmg, brp  
**Weight:** 647 lbs.



STACKED HEART IN JET BLACK



MT07 IN JET BLACK



OV04 IN JET BLACK



FLAG IN JET BLACK



BR02 IN JET BLACK



MT01 IN JET BLACK

| Models shown on page 27   | Weight    |
|---|-----------|
| <b>STK. HRT DIE:</b> 2-6 x 0-6 x 3-8 special cut<br><b>BASE:</b> 3-6 x 1-0 x 0-6 pft, 1.5" pmg, brp | 1263 lbs. |
| <b>STK. HRT DIE:</b> 2-6 x 0-8 x 3-8 special cut<br><b>BASE:</b> 3-6 x 1-2 x 0-8 pft, 2" pmg, brp   | 1761 lbs. |
| <b>FLAG DIE:</b> 2-4 x 0-6 x 3-0 special cut<br><b>BASE:</b> 3-0 x 1-0 x 0-6 pft, 1.5" pmg, brp     | 947 lbs.  |
| <b>FLAG DIE:</b> 2-6 x 0-8 x 3-6 special cut<br><b>BASE:</b> 3-6 x 1-2 x 0-8 pft, 2" pmg, brp       | 1761 lbs. |
| <b>OV04 DIE:</b> 2-0 x 0-6 x 2-4 special cut<br><b>BASE:</b> 2-10 x 1-0 x 0-6 pft, 1.5" pmg, brp    | 747 lbs.  |
| <b>OV04 DIE:</b> 2-6 x 0-6 x 3-0 special cut<br><b>BASE:</b> 3-6 x 1-0 x 0-6 pft, 1.5" pmg, brp     | 1002 lbs. |
| <b>MT07 DIE:</b> 3-0 x 0-6 x 3-0 special cut<br><b>BASE:</b> 3-6 x 1-0 x 0-6 pft, 1.5" pmg, brp     | 1002 lbs. |
| <b>MT07 DIE:</b> 3-6 x 0-6 x 3-6 special cut<br><b>BASE:</b> 4-6 x 1-0 x 0-6 pft, 1.5" pmg, brp     | 1519 lbs. |
| <b>BR02 DIE:</b> 1-6 x 0-6 x 2-0 P5<br><b>BASE:</b> 2-10 x 1-0 x 0-6 pft, 1.5" pmg, brp             | 581 lbs.  |
| <b>MT01 DIE:</b> 3-0 x 0-6 x 3-6 P2, brp<br><b>BASE:</b> 4-0 x 1-0 x 0-6 pft, 1.5" pmg, brp         | 1573 lbs. |

# Everything

IN THIS WORLD CHANGES...EXCEPT YOUR LEGACY

# and love



Keep your memories alive with Legacy Memorials!  
Artistic shapes, unique carvings and personalized  
laser engravings represent the unique love you  
have for a lost loved one.

**DIFFERENTIATE YOURSELF WITH A LEGACY MEMORIAL.**





MT20 IN JET BLACK



HS08 IN CAT'S EYE



RT08 IN BAHAMA BLUE



RT06 IN JET BLACK



HS04 IN CARNATION PINK



CT01 IN SUPER GRAY

| Models shown on page 29  | Weight    |
|--|-----------|
| <b>Die:</b> 2-0 x 0-6 x 3-0 special cut<br><b>Base:</b> 2-10 x 1-0 x 0-6 pft, 1.5" pmg brp | 880 lbs.  |
| <b>Die:</b> 2-2 x 0-6 x 3-6 special cut<br><b>Base:</b> 3-0 x 1-0 x 0-6 pft, 1.5" pmg brp  | 1055 lbs. |
| <b>Die:</b> 2-2 x 0-8 x 3-6 special cut<br><b>Base:</b> 3-0 x 1-2 x 0-8 pft, 2" pmg brp    | 1473 lbs. |



CT02 IN JET BLACK

## THE BENEFIT OF VERTICAL

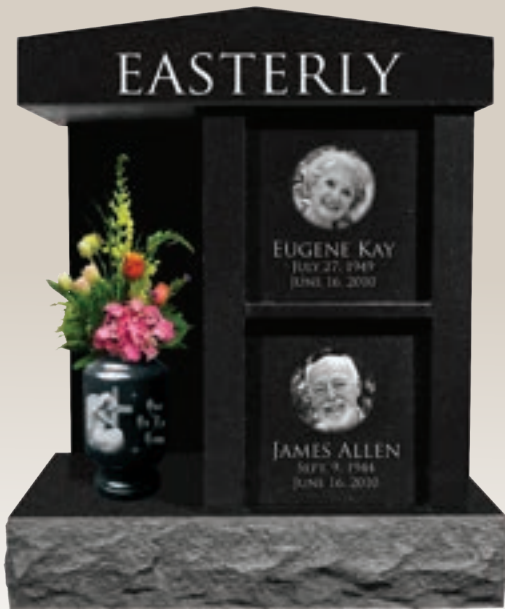
Vertical monuments stand out more in a cemetery. Their size allows you to place a double monument on a single setting!



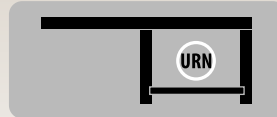


## CREMATION SOLUTIONS

Give your customers what they really want! Many customers are not aware of the choices they have when opting for cremation. Display cremation memorials in the front of your showroom and you will have no problem selling them!



top view urns on two levels



## CREMATION IS A PRELUDE TO MEMORIALIZATION

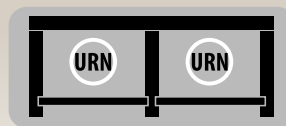
This upright cremation memorial features cremation chambers and a built in corridor for an accent piece of your choice. There are many vases, solar lights and miniature statues to choose from.

### CV1401G

Size **Top w/ supports:** 2-6 x 1-6 x 2-6  
**Base:** 2-8 x 1-8 x 0-6 pft brp  
**2 Doors:** 1-0 x 0-.75 x 1-0.5 Weight: 1250 lbs.  
**Chamber size (2):** 11" x 11" x 14"  
 \*Comes fully assembled.



top view urns on two levels



### CC4D

Size **Top:** 2-8 x 1-4 x 0-4 **Back:** 2-6 x 0-1 x 3-1  
**Sides & Center:** 0-2 x 1-1 x 3-1  
**4 Doors:** 1-0.75 x 0-.75 x 1-6  
**Base:** 3-3 x 1-6 x 0-4 pft bfp  
**Chamber size (4):** 12 "x 11 "x 18" Weight: 1010 lbs.  
 \*Comes fully assembled.



top view



### CRH1404

Size **Back:** 2-6 x 0-6 x 1-8 **Cap:** 2-8 x 1-2 x 0-4  
**Supports:** 0-2 x 1-1 x 1-6 **Base:** 3-0 x 1-6 x 0-4  
**Doors:** 2-1 x 0-.75 x 1-6  
**Chamber size:** 30 "x 10.5" x 20" Weight: 660 lbs.  
 \*Comes fully assembled.

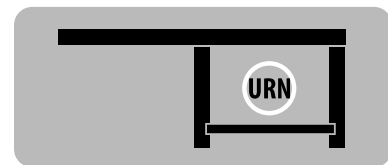


## THE ULTIMATE CREMATION MEMORIAL!

It's what's above the ground that really matters. Your customers can still benefit from the memorialization of their loved one when opting for cremation with our vast selection of cremation products.

Your customers will LOVE the idea of laser etching family photos and other memories onto the Jet Black doors of a cremation columbarium.

top view urns on two levels



### CV1402G

Size **Top:** 3-0 x 1-6 x 3-0 **Base:** 3-0 x 1-7 x 0-8  
**2 Doors:** 1-1.15 x 0-.75 x 1-1.15  
**Chamber size (2):** 11" x 11" x 12"  
 \*Comes fully assembled.

### SHOW THEM OPTIONS!

Combat the profit loss caused by cremation! Show your customers the MANY cremation memorials available. Our studies show that 50% of customers who are shown cremation memorials will purchase one for their loved after hearing the benefits.

### NEW PRODUCT



### CV1400

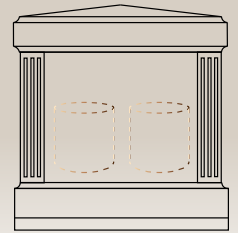
Size **Top:** 1-10 X 1-6 X 0-6 **Back:** 1-5.5 X 0-2 X 1-6  
**Sides:** 1-4 X 0-2.75 X 1-6 **Base:** 1-10 X 1-8 X 0-6  
**Door:** 1-2 X 0-.75 X 1-6 Chamber size (1):  
**Weight:** 500 lbs.





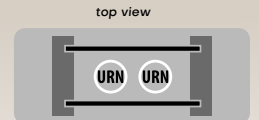
### CH1402

Size **Top:** 3-0 x 1-6 x 0-8  
**Pillars:** 0-4 x 1-4 x 1-10  
**2 Doors:** 2-4 x 1-10 x 0-75  
**Base:** 3-0 x 1-7 x 0-8 5" bev. frt pol.  
**Chamber Size:** 26" x 14" x 22"  
**Weight:** 1753 lbs.



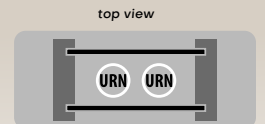
### CRH1401

Size **Top:** 3-8 x 1-3 x 0-6  
**Supports:** 0-6 x 1-2 x 1-8  
**Base:** 4-0 x 1-4 x 0-8 2" pmg brp  
**2 Doors:** 2-9 x 0-.75 x 1-8  
**Chamber Size:** 30" x 11" x 20"  
**Weight:** 1565 lbs.



### CH1401

Size **Top:** 2-8 x 1-4 x 0-4  
**Base:** 3-0 x 1-6 x 0-4 pft brp  
**2 Doors:** 1 x 0.75 x 0-.75 x 1-6  
**Chamber Size (2):** 12" x 11" x 18"  
**Weight:** 690 lbs.



# DELUXE CREMATION BEVEL

Our 2 foot and 3 foot Cremation Bevels are the perfect solution if you are looking for a multiple cremation chamber set up. The 2 foot bevel holds 2 plastic cremation urns, and the 3 foot holds 3 plastic cremation urns.

Available in 2 Sizes

## SUPER GRAY BEVEL

Size 2-0 x 1-0 x 0-8/0-6  
 sawed top and bottom brp  
**chamber size:** 1-7.5 x 0-6.75 x 0-6.5/5  
**Jet Black Plaque:** 2-0 x 1-0 x 0-1.5 P5 w/ 1/2" chamfer  
**Weight:** 230 lbs.

## SUPER GRAY BEVEL

Size 3-0 x 1-0 x 0-8/0-6  
 sawed top and bottom brp  
**chamber size:** 2-4.5 x 0-6.75 x 0-6.5/5  
**Jet Black Plaque:** 3-0 x 1-0 x 0-1.5 P5 w/ 1/2" chamfer  
**Weight:** 340 lbs.



# DOUBLE CREMATION BEVEL

*Providing You With Unlimited Options!*

## CREMATION BEVEL

Size **2 Jet Black Plaques:** 2-0 X 1-0 x 0-1.5  
 all polished w/ a .5" chamfer  
**2 Jet Black Bevels:** 2-0 x 1-0 x 0-8/0-6  
 sawed top & bottom brp  
**chamber size:** 1-7.5 x 0-6.75 x 0-6.5/5  
**Super Gray Base:** 5-0 x 1-6 x 0-4 pft brp  
*bird bath not included*

Chose your own  
 center piece  
 from our fine line  
 of companion  
 pieces!



Add lasered artwork  
 or portraits for  
 a personalized  
 memorial!

## CREMATION PILLARS

With a fully customizable Jet Black plaque and unlimited sandblast options, this Cremation Pillar is a perfect solution for your cremation needs!

Pillars can be used at a traditional cemetery plot in a memorial park or in your own home garden!



### Double Pillars

**Size:** 1-6 x 0-9 x 1-6 w/  
Jet Black plaque  
**Weight:** 336 lbs



### Single Pillars

**Size:** 0-10 x 0-9 x 1-6 w/  
Jet Black plaque  
**Weight:** 187 lbs

### Now offering two popular sizes:

**Size:** 0-7 x 0-7 x 0-10 P6 w/ cremation chamber: 0-6 x 0-9

**Size:** 0-8 x 0-5 x 0-10 P6 w/ cremation chamber: 0-7 x 0-4 x 0-9

**Weight:** 14 lbs

A hidden cremation chamber.



8" x 5" x 10"

7" x 7" x 10"

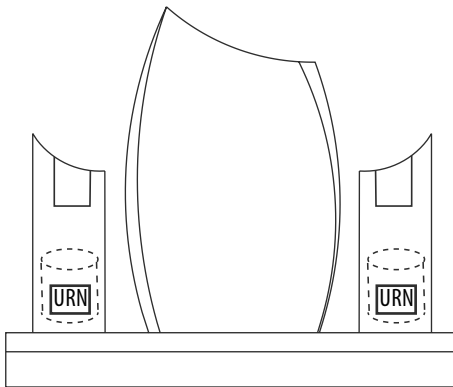
## FULLY LASER-ABLE

square, rectangular and cylindrical urns are the perfect canvas for laser etchings! Beautiful polished sizes make this a perfect option for personalization.



## TURN AN ALREADY BEAUTIFUL LEGACY MEMORIAL

into a stunning cremation memorial simply by adding matching vases. These vases are extremely functional used both as a vase (vase hole on top) and a cremation chamber (core hole in bottom). Custom cremation vases can be made to go with other Legacy Memorials. Call your sales representative for details.



VASECM01 IN JET BLACK

Available by Special Order only.

Size **Die:** 2-2 x 0-8 x 3-6 **Base:** 5-0 x 1-2 x 0-8 pft 2" pmg brp  
**2 Vases:** 0-10 x 0-10 x 1-6 **Weight:** 2199 lbs.



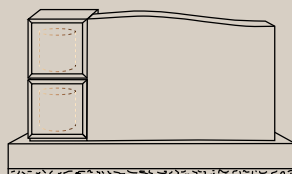
Available by Special Order only.



Available by Special Order only.

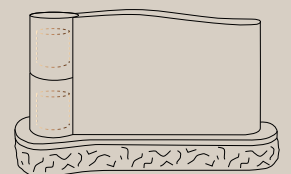
### CM001

Size **Top:** 3-0 x 0-6 x 2-1  
**Base:** 4-6 x 1-2 x 0-6 5" bev. frt pol.  
**2 Cube Urns:** 0-10 x 0-10 x 1-0  
**Chamber diameter (2):** 6.5" x 9"  
**Weight:** 1422 lbs.



### CM002

Size **Top:** 3-4 x 0-8 x 2-2  
**Base:** 4-8 x 1-4 x 0-8 2" pmg brp  
**2 Side Urns:** 0-10 x 0-10 x 1-0  
**Chamber diameter (2):** 6.5" x 9"  
**Weight:** 2063 lbs.

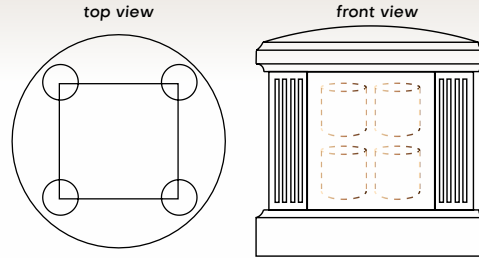


\*Other colors available. Call for a quote: 800-449-2481



### CD3032

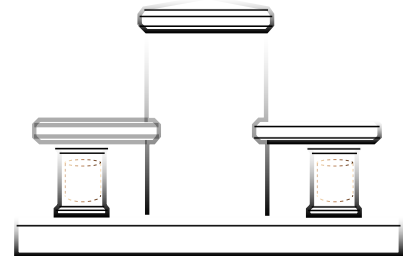
Size **Top:** 2-6 x 2-6 x 0-6 all pol.  
**4 Pillars:** 0-5 x 0-5 x 1-6  
**4 Doors:** 1-7 x 0-1 x 1-6  
**Base:** 2-6 x 2-6 x 0-6 all pol.  
**Chamber Size:** 16" x 16" x 18"  
**Weight:** 1560 lbs.



## FEATURED PRODUCT

### CMM03

Size **Royal Gray Apex Top:** 2-2 x 0-10 x 0-6 all pol.  
**Jet Black Die:** 2-0 x 0-8 x 3-0 P5 flat top  
**Royal Gray Seat Tops:** 2-0 x 1-0 x 0-4 all pol.  
**Jet Black Seat Pillars:** 0-10 x 0-10 x 1-2  
**Royal Gray Base:** 7-0 x 1-0 x 0-8 2" pmg brp  
**Chamber Diameter (2):** 7" x 9"  
**Weight:** 2299 lbs.



front view



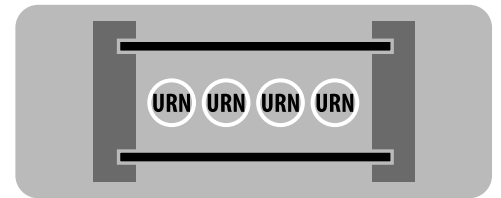
**CM005**

**THE PERFECT SIZE!**

This 3 foot columbarium is the perfect size to fit on most single grave sites AND it fits up to 4 cremation urns in the chamber with an interior dimension of over 17" x 8" x 18".

Endless Possibilities! Laser etch or hand etch on the Jet Black door and sandblast on the Super Gray top base and supports!

top view: CM003 CM004 CM005



**CM003**



**CM004**

**LARGER THAN LIFE!**

These columbariums look larger than they actually are because of the 6" cap base and supports. A hollow interior also gives you a larger looking monument for the money.

**HIGH PERCEIVED VALUE!**

These ALL POLISHED designs combine the low cost of Super Gray granite with Jet Black doors driving up the perceived value of the stone yet still allows you to buy at a reasonable price.

**CM003, CM004 & CM005**

Size **Top and Base:** 3-0 x 1-1 x 0-6  
**2 Supports:** 0-6 x 1-0 x 1-6  
**2 Doors:** 1-11 x 0-0.75 x 1-6  
**Chamber Size:** 20" x 8" x 18"  
**Weight:** 750 lbs.





## CMM02

Size **Cremation Pillar: Cap:** 3-6 x 1-0 x 1-0 P5  
**Apex (2) Pillars:** 1-0 x 1-0 x 1-10 P5, Column shape, w/  
 6" x 8" cremation hole  
**Sub-base:** 3-10 x 1-2 x 0-6 P5, w/ 2" scotia,  
**Base:** 5-0 x 1-4 x 0-10 pft, 2" pmg, brp



## CM006

Size **Top:** 1-8 x 0-6 x 3-0  
**Base:** 3-0 x 1-2 x 0-6 5" bev. ft. pol.  
**2 Side Urns:** 0-9 x 0-9 x 1-4  
**Chamber size (2):** 6" x 8"



## FEATURED PRODUCT

### CREMATION HEART BEVEL

Size 1-6 x 1-4 x 0-8/0-6.5 PFT, W/ 1-4 x 1-1 x 0-6  
 Cremation Hole, BRP  
**Jet Black Plaque:** 1-6 x 1-1 x 0-1.5 Heart,  
 W/ 1/2" Chamfer, P5 **Weight:** 2299 lbs.

# CREMATION MARBLE URNS

SuperNova Urns have a capacity of 220in<sup>3</sup> and are large enough to fit most cremation needs.



XDURN03 Marble  
8" diameter x 8<sup>3</sup>/<sub>4</sub>" tall



XDURN02 Marble  
7" diameter x 8" tall



XDURN04 Marble  
8" diameter x 8<sup>3</sup>/<sub>4</sub>" tall



XDURN05 Marble  
7" diameter x 8<sup>3</sup>/<sub>4</sub>" tall



XDURN06 Marble  
8" diameter x 8<sup>3</sup>/<sub>4</sub>" tall



XDURN01 Marble  
8.5" diameter x 9" tall

*\*All urns weigh approximately 15 lbs.*

# CREMATION METAL URNS



a.



b.



c.



d.



e.



f.



g.



h.



i.

| Description                                    | Price | Description   | Price |
|--|-------|---|-------|
| A. 5275-L BRASS Grecian Red Engraved           | \$105 | F. 5307-L Brass Modern Avalon Pewter/ Bronze Engraved | \$105 |
| B. 1537-L ALLOY Avalon Pewter Engraved         | \$65  | G. 7657-L BRASS Classic Red Thread                    | \$105 |
| C. 1582-L ALLOY Grecian Blue Engraved          | \$65  | H. 5227-L Brass Grecian Bronze/ Pewter Engraving      | \$105 |
| D. 2025-L BRASS Avondale Large Bronze Engraved | \$105 | I. 1908-L ALLOY New Dome Top Forest Rain              | \$75  |
| E. 5284-L Brass Grecian Bronze                 | \$105 |   |       |

# CREMATION GARDEN SETS

## RUSTIC ELEGANCE

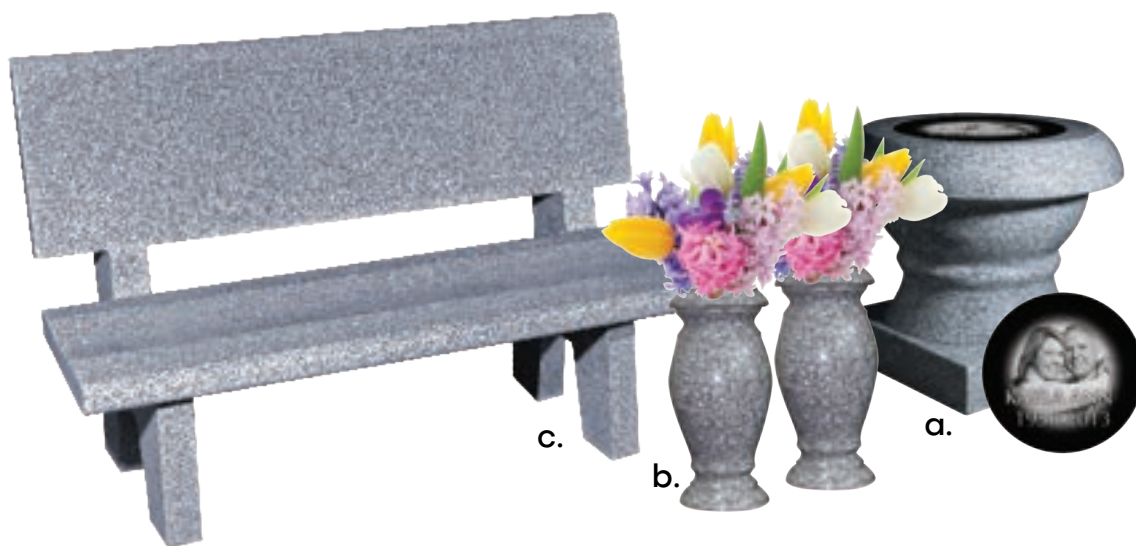
In Super Gray

**A. GBATH01 BIRD BATH**  
Overall Size: 15" diameter x 24" tall

**B. PL04 Rocky Planter Pair**  
Size: 1-4 x 1-4 x 1-2 w/ core hole

**C. CGPL05 Rocky Cremation Urn**  
Size: 1-0 x 1-0 x 1-2 \*Special Order

**D. RUSC04 Rustic Bench**  
Overall size: 4-0 x 1-4 x 0-3 (optional urn space)



## BACKYARD BEAUTY

In Super Gray

**A. CGPL04 Planter**  
Size: 1-4 x 1-4 x 1-2  
\*Special Order

**B. Turned Vase Pair**  
Size: 0-7 x 1-0

**C. CHR02 Bench**  
Seat: 3-0 x 1-4 x 0-2, P5  
Back: 3-0 x 0-2 x 1-2  
Legs: 1-6 x 0-2.5 x 2-6, P5

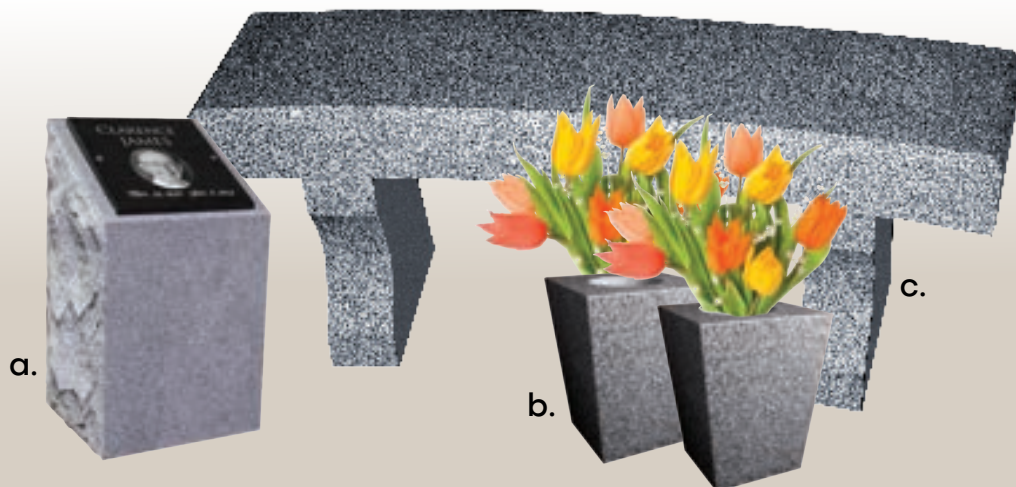
## POLISHED PERFECTION

In Super & Royal Gray

**A. Cremation Pillar**  
Single: 0-10 x 0-9 x 1-6  
Double: 1-6 x 0-9 x 1-6 (add \$140)

**B. Square Tapered Vase Pair**  
Size: 0-8 x 0-6 x 0-10

**C. Bench (BEN06)**  
Top: 3-0 x 1-4 x 0-4, P5  
Leg(s): 1-1 x 0-4 x 1-2 curved







## HEIRLOOM MEMORIALS

A new spin on a traditional memorial! Heirloom Memorials combine the natural look of a special cut monument with the addition of designed sandblast artwork created to fit perfectly with the shape of the stone. Available in both domestic and import colors.

HM01



HM01 IN GEORGIA GRAY

**Die:** 2-6 x 0-6 x 2-0 **Base:** 3-6 x 1-0 x 0-6 pft, brp **Weight:** 763 lbs.

**HEIRLOOM MEMORIALS**

These popular monuments are a beautiful combination of custom stone shapes with personalized finish work that fits perfectly with the shape of the stone.



HM02



HM08

| Models shown   | Weight   |
|--|----------|
| <b>HM08 Die:</b> 2-6 x 0-6 x 2-0 P2<br>sawn vase area, cored w/<br>weep<br><b>Base:</b> 3-6 x 1-0 x 0-6 pft, brp | 763 lbs. |
| <b>HM02 Die:</b> 2-6 x 0-6 x 2-4 P2<br><b>Base:</b> 3-6 x 1-0 x 0-6 pft, brp                                     | 837 lbs. |
| <b>HM11 Die:</b> 2-0 x 0-6 x 2-0 P2<br><b>Base:</b> 3-0 x 1-0 x 0-6 pft, brp                                     | 628 lbs. |
| <b>HM13 Die:</b> 1-8 x 0-6 x 1-8 P2<br><b>Base:</b> 2-2 x 1-0 x 0-6 pft, brp                                     | 444 lbs. |



HM11



HM13



WITH LASER ETCHING

# HM03



**Die:** 3-0 x 0-6 x 2-0, P2 **Base:** 4-0 x 1-0 x 0-6 pft, brp **Weight:** 867 lbs.

| Models shown   | Weight   |
|--|----------|
| <b>HM05 Die:</b> 3-0 x 0-6 x 2-0 P2<br><b>Base:</b> 4-0 x 1-0 x 0-6 pft, brp | 897 lbs. |
| <b>HM12 Die:</b> 3-0 x 0-6 x 2-2 P2<br><b>Base:</b> 4-0 x 1-0 x 0-6 pft, brp | 987 lbs. |
| <b>HM16 Die:</b> 3-0 x 0-6 x 2-0 P2<br><b>Base:</b> 4-0 x 1-0 x 0-6 pft, brp | 897 lbs. |
| <b>HM15 Die:</b> 3-6 x 0-6 x 2-0 P2<br><b>Base:</b> 4-6 x 1-0 x 0-6 pft, brp | 987 lbs. |
| <b>HM18 Die:</b> 3-0 x 0-6 x 2-0 P2<br><b>Base:</b> 4-0 x 1-0 x 0-6 pft, brp | 897 lbs. |



HM05



HM12



HM15



HM16



HM18





HM17



HM21



HM22



HM24



HM27

| Models shown   | Weight   |
|--|----------|
| <b>HM17 Die:</b> 3-0 x 0-6 x 2-0 P2<br><b>Base:</b> 4-0 x 1-0 x 0-6 pft, brp | 897 lbs. |
| <b>HM22 Die:</b> 3-6 x 0-6 x 2-4 P2<br><b>Base:</b> 4-6 x 1-0 x 0-6 pft, brp | 987 lbs. |
| <b>HM21 Die:</b> 3-6 x 0-6 x 2-0 P2<br><b>Base:</b> 4-6 x 1-0 x 0-6 pft, brp | 987 lbs. |
| <b>HM24 Die:</b> 3-0 x 0-6 x 2-0 P2<br><b>Base:</b> 4-0 x 1-0 x 0-6 pft, brp | 897 lbs. |
| <b>HM27 Die:</b> 3-4 x 0-6 x 2-0 P2<br><b>Base:</b> 4-4 x 1-0 x 0-6 pft, brp | 987 lbs. |



HM06

**Die:** 4-0 x 0-6 x 2-0 P2, brp **Base:** 5-0 x 1-0 x 0-6 pft, brp **Weight:** 1166 lbs.



## STANDARD COLLECTION

Our Standards have withstood the test of time for as long as we've been in business. With our wide variety of sizes, polishes and top designs, you can rest assured: we have the standard memorial you need.

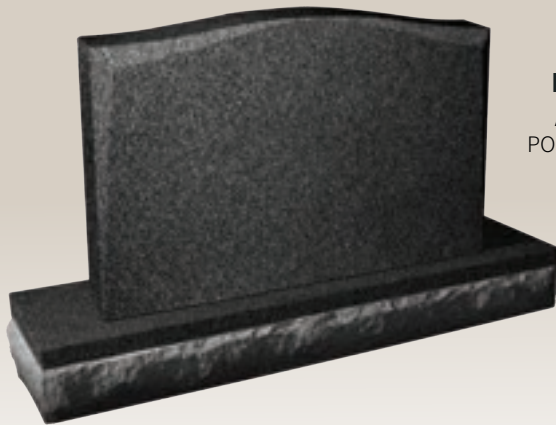
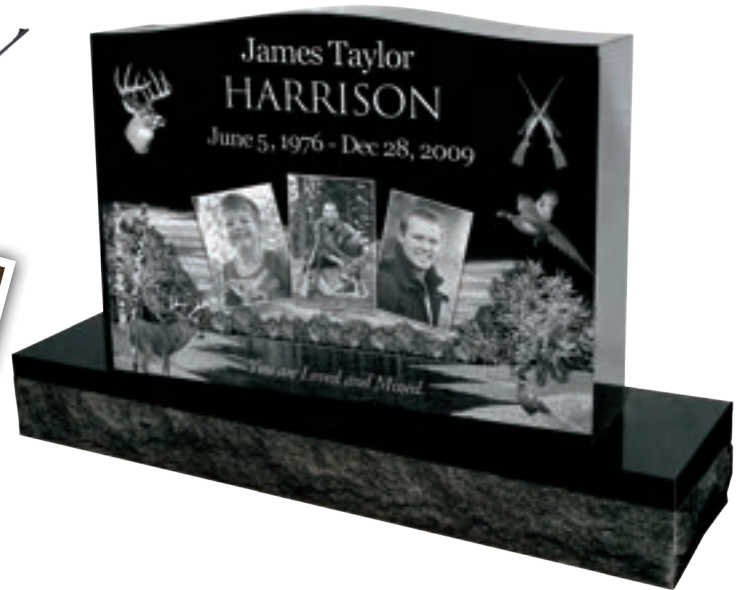


# CREATE A PERSONALIZED MASTERPIECE

Turn This...



Into This!



**Polish 8**  
ALL FACES  
POLISHED WITH  
CHAMFER



**Polish 5**  
ALL FACES  
POLISHED



**Polish 3**  
POLISHED TOP  
FRONT AND  
BACK



**Polish 2**  
POLISHED  
FRONT AND  
BACK



# STANDARD TOP DESIGNS



# CREATE A PERSONALIZED TRIBUTE



## ALTHOUGH SERP TOPS REPRESENT A MORE BASIC STYLE OF MONUMENT

there is no reason you can't make them extra special with the addition laser artwork or our fine line of companion pieces. Simply add a larger base to accommodate solar lights, vases or even one of our unique statues. Turn a traditional memorial into a beautiful display that honors the legacy of a life once lived.

## ADD GRANITE VASES

P. 59



## ADD SOLAR LIGHTS!

P. 61



## ADD MEMORIES WITH INSERTS!

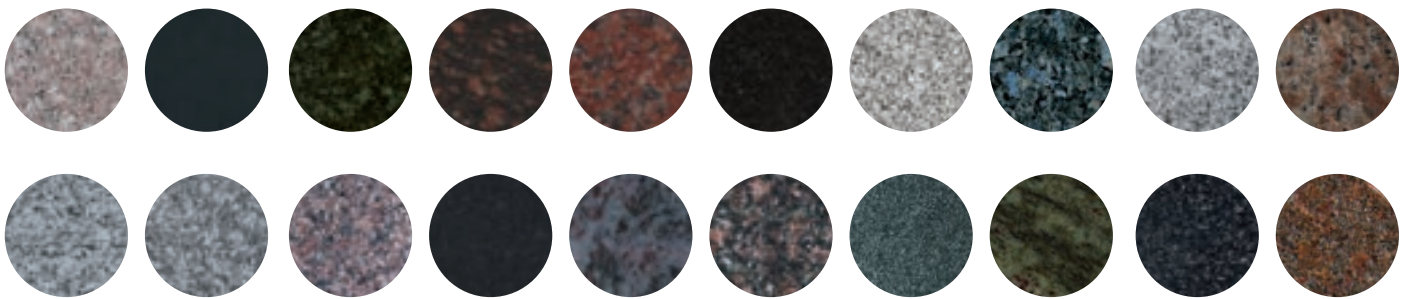
Even if you're opting for an traditional color such as our Super Gray, there are still many options available for adding laser etched photos and artwork to your stone - laser etched tiles can be inserted directly into the face of any stone in any color!



# INSERT SOME CREATIVITY



Many colors....



| Serp Top Sizes   | Weight   |
|--|----------|
| <b>DIE:</b> 1-6 x 0-6 x 2-0<br><b>BASE:</b> 2-0 x 1-0 x 0-6  | 467 lbs. |
| <b>DIE:</b> 2-0 x 0-6 x 1-8<br><b>BASE:</b> 2-10 x 1-0 x 0-6 | 576 lbs. |
| <b>DIE:</b> 2-0 x 0-6 x 2-0<br><b>BASE:</b> 2-10 x 1-0 x 0-6 | 639 lbs. |
| <b>DIE:</b> 2-0 x 0-6 x 2-4<br><b>BASE:</b> 2-10 x 1-0 x 0-6 | 701 lbs. |
| <b>DIE:</b> 2-0 x 0-6 x 3-0<br><b>BASE:</b> 2-10 x 1-0 x 0-6 | 880 lbs. |

| Serp Top Sizes   | Weight   |
|--|----------|
| <b>DIE:</b> 2-6 x 0-6 x 1-8<br><b>BASE:</b> 3-6 x 1-0 x 0-6  | 716 lbs. |
| <b>DIE:</b> 2-6 x 0-6 x 1-10<br><b>BASE:</b> 3-6 x 1-0 x 0-6 | 806 lbs. |
| <b>DIE:</b> 2-6 x 0-6 x 2-0<br><b>BASE:</b> 3-6 x 1-0 x 0-6  | 972 lbs. |
| <b>DIE:</b> 2-6 x 0-6 x 2-6<br><b>BASE:</b> 3-6 x 1-0 x 0-6  | 897 lbs. |
| <b>DIE:</b> 3-0 x 0-6 x 1-8<br><b>BASE:</b> 4-0 x 1-0 x 0-6  | 841 lbs. |

...in any size!

| Serp Top Sizes   | Weight    |
|--|-----------|
| <b>DIE:</b> 3-0 x 0-6 x 1-10<br><b>BASE:</b> 4-0 x 1-0 x 0-6 | 981 lbs.  |
| <b>DIE:</b> 3-0 x 0-6 x 2-0<br><b>BASE:</b> 4-0 x 1-0 x 0-6  | 935 lbs.  |
| <b>DIE:</b> 3-0 x 0-6 x 2-4<br><b>BASE:</b> 4-0 x 1-0 x 0-6  | 1100 lbs. |
| <b>DIE:</b> 3-6 x 0-6 x 1-8<br><b>BASE:</b> 4-6 x 1-0 x 0-6  | 966 lbs.  |
| <b>DIE:</b> 3-6 x 0-6 x 1-10<br><b>BASE:</b> 4-6 x 1-0 x 0-6 | 1021 lbs. |
| <b>DIE:</b> 3-6 x 0-6 x 2-0<br><b>BASE:</b> 4-6 x 1-0 x 0-6  | 1075 lbs. |
| <b>DIE:</b> 3-6 x 0-6 x 2-2<br><b>BASE:</b> 4-6 x 1-0 x 0-6  | 1130 lbs. |
| <b>DIE:</b> 3-6 x 0-6 x 2-4<br><b>BASE:</b> 4-6 x 1-0 x 0-6  | 1184 lbs. |





When you want a beautiful serp top in a color other than black, but still want to personalize with a laser etching, Jet Black inserts are your answer! Add a black and white or colored insert to take a traditional serp top to the next level!

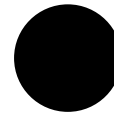


## Endless Possibilities

Place inserts into statues, benches, slants and more! Color options available.



**IOH01** ... 11<sup>3</sup>/<sub>4</sub>" x 11<sup>3</sup>/<sub>4</sub>"  
**IOH02** ... 7<sup>3</sup>/<sub>8</sub>" x 7<sup>3</sup>/<sub>8</sub>"  
**IOH03** ... 5<sup>7</sup>/<sub>8</sub>" x 5<sup>7</sup>/<sub>8</sub>"



**IOC02** ... 8"  
**IOC03** ... 6 7/8"  
**IOC04** ... 5 7/8"



**T01** ..... 12" x 12" x 3 8"  
**T08** ..... 12" x 6" x 3 8"  
**T05** ..... 6" x 6" x 3 8"



**IOV02** .... 11" x 8"  
**IOV03** .... 8 5/8" x 6 1/8"  
**IOV04** .... 5 3/4" x 4 1/8"  
**IOV05** .... 5" x 7"



**IOX01** .... 8" x 10" x 3 8"  
**IOX02** .... 5" x 7" x 3 8"



## BENCHES & CHAIRS

Our granite benches are the most versatile item we carry! Not only are they great as memorials, they also make great advertisements just by adding your business name or logo. Your name will remain in granite forever!



# POPULAR CREMATION BENCH

## CMBC01



**WITH SO MANY OPTIONS THIS BENCH IS YOUR ANSWER!**

These versatile benches were designed for cremation, but can also be used as a traditional bench memorial.

Jet Black doors can be laser etched; and bench supports have room for endless laser designs or sandblast carvings!



CMBC05



CMBC04

| CMBC01 CMBC03<br>CMBC04 CMBC05<br>Sizes Available                              | Weight   |
|--|----------|
| <b>Overall size:</b> 3-0 x 1-1 x 1-8<br><b>Chamber size:</b> 19" x 9" x 12"    | 639 lbs. |
| <b>Overall size:</b> 3-6 x 1-1 x 1-8<br><b>Chamber size:</b> 19" x 9" x 12"    | 842 lbs. |
| <b>Overall size:</b> 4-0 x 1-1 x 1-8<br><b>Chamber size:</b> 2-9 x 0-.75 x 1-0 | 984 lbs. |



CMBC03



# VERSATILE | ENDURING | BEAUTIFUL



CHR01 IN SUPER GRAY



BEN05 IN JET BLACK

STANDARD BENCH SIZES ARE 3' AND 4'.  
ASK YOUR REPRESENTATIVE FOR MORE SIZING DETAILS.



BELL-BENCH IN CARNATION PINK



BEN09 IN JET BLACK

## REMEMBER THE *PEOPLE* YOU



A better way to remember... Keep a constant reminder of your loved one in the place that you are closest to - your own home. When adding a memorial bench to your own home landscape - your most precious memories will be enjoyed on a daily basis by all who enter.





CHR02 IN JET BLACK



RUSC04/06 IN SUPER GRAY

STANDARD BENCH SIZES ARE 3' AND 4'.  
ASK YOUR REPRESENTATIVE FOR MORE SIZING DETAILS.



BEN01 IN JET BLACK



GBEN03 IN SUPER GRAY

## LOVE IN THE PLACES YOU LOVE



Family and friends will love being able to reminisce about lost loved ones in a comforting and familiar environment. Celebrate the legacy of a life once lived whenever and wherever is convenient for you.

PERFECT AS A LIFETIME MEMORIAL, GARDEN ACCENT, OR A BEAUTIFUL CREMATION MONUMENT.



Add personalized family photos for a lifetime of remembrance.

If opting for cremation, use the two chambers inside. If not, it is a perfect vessel for keepsakes such as letters or other special items.

There are so many different fonts that can be laser etched onto granite! Choose from over hundreds of fonts at just about any size!



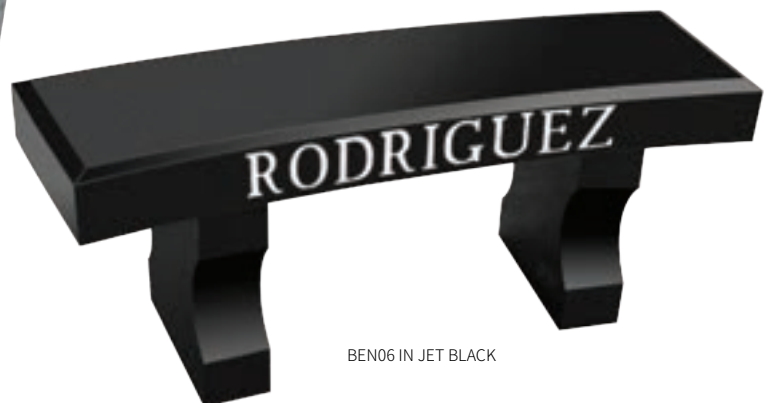
CMBEN01 IN JET BLACK



CMBEN01B IN SUPER GRAY



BEN02 IN SUPER GRAY



BEN06 IN JET BLACK



# DONATE A LASTING IMPRESSION!



BENTAP IN JET BLACK

Sometimes life touches you in unexpected ways. Whether it is a person, an organization or a group, show your appreciation with something that will last forever and be noticed and admired by all.



BEN01 IN JET BLACK



CHR02 IN JET BLACK

# CREMATION READY BENCHES



BEN03 IN SUPER GRAY

Expand the scope of your lettering options by using our in-house lasering services. When you choose laser etching you have hundreds of creative font options!



BENTAP IN JET BLACK



BENARC IN JET BLACK



## COMPANION PIECES

Our line of Companion Pieces were thoughtfully designed to go with our exquisite line of Statue Monuments, Legacy Memorials, Plura Memorials and even basic Serp Tops and Markers. They also make great stand alone pieces! Add an extra touch of beauty to any setting with these unique products.

# ROCKY GARDEN SERIES

RUSTIC BENCH



## RUSTIC BENCH

**3' Seat:** 4-0 x 1-4 x 0-3  
**4' Seat:** 3-0 x 1-4 x 0-3  
**Legs:** 0-11 x 0-11 x 1-1, 0-8 x 0-8 x 1-1  
**2 Cremation Holes:** 0-6 x 10

## OUR ROCKY GARDEN SERIES

is a one of a kind collection that not only brightens up any outdoor space and speaks directly to the rustic garden landscape, but also doubles as a cremation memorial.



PLANTER

**Planter**  
1-6 x 1-0 x 0-10



PLANTER

**Planter**  
1-0 x 1-0 x 0-10



BIRDBATH

**Birdbath**  
15" diameter x 24" tall

# GRANITE VASES

\*Some colors are available by special order only.



TIMELESS VASE



HEART VASE



CROSS VASE



**LASERABLE VASE!** Add a Jet Black laser etched vase to any monument and create a more finished look!



# BIRD BATHS



**BB05**



**BB01**

**BRING IN A TOUCH OF NATURE** when choosing any of our beautiful bird baths. They are the perfect addition to just about any memorial setting or home garden!

## BB05

Size 30" diameter x 24" tall  
**Weight:** 1081 lbs.

## BB01

Size 18" diameter x 24" tall  
**Weight:** 284 lbs.

# GARDEN PLANTERS



**PL02F:** 1-3 x 0-10 x 1-1  
**Weight:** 211 lbs.



**PL02:** 1-3 x 0-10 x 1-1  
**Weight:** 211 lbs.

## BETTER TOGETHER!

Polished granite planters fit perfectly with any premium polished monument. Rocky Planters are part of our Rocky Garden Series and go perfectly with the Rocky Bench and Rocky Bird Bath both shown on page 59.



**PL04:** 1-0 x 1-0 x 0-10  
**Weight:** 156 lbs.



**Planter02:** 0-10 x 0-10 x 1-0  
**Weight:** 125 lbs.



**PL11:** 1-6 x 1-0 x 0-10  
**Weight:** 225 lbs.



**PL05:** 1-0 x 1-0 x 0-10  
**Weight:** 72 lbs.

# GRANITE SOLAR LIGHTS



**HST2004**  
5 1/2 x 5 1/2 x 11 3/4"  
Weight: 25 lbs



**HST1060**  
4 5/8 x 7 3/4"  
Weight: 25 lbs

## A BRIGHT IDEA!

Our solar lights are low maintenance, energy efficient and made out of 100% granite.

The nickel metal hydroid battery charges by day and powers the included LED light by night.

You can also use the switch within the unit to turn the light on and off as you desire. Replacement solar lights available.



**HST2001**  
5 3/4 x 10 5/8"  
Weight: 25 lbs



**HST3002**  
5 1/2 x 6 x 10 3/4"  
Weight: 25 lbs



**HST3061**  
6 3/4 x 6 3/4 x 9 1/2"  
Weight: 25 lbs



**HST2003**  
6 x 6 3/4 x 11 1/2"  
Weight: 25 lbs



**HST3007**  
6 3/4 x 6 3/4 x 9 1/2"  
Weight: 25 lbs



**HST2002**  
7 3/4 x 7 3/4 x 9 1/2"  
Weight: 25 lbs



**HST3060**  
7 3/4 x 9 1/2 x 11"  
Weight: 25 lbs



**HST3005**  
7 x 7 x 9 1/2"  
Weight: 25 lbs



**HST2007**  
4 3/4 x 4 3/4 x 7 3/4"  
Weight: 25 lbs



**HST3003**  
5 1/2 x 6 x 10 3/4"  
Weight: 25 lbs



**BHST1006**  
4 1/2 x 4 1/2 x 8"  
Weight: 25 lbs



**BHST3002**  
4 1/2 x 4 1/2 x 8"  
Weight: 25 lbs



**HST2003**  
6 1/2 x 6 1/2 x 12"  
Weight: 25 lbs



**BHST3003**  
4 1/2 x 4 1/2 x 8"  
Weight: 25 lbs



**BHST2004**  
6 3/4 x 6 3/4 x 6 1/2"  
Weight: 25 lbs

# COMPANION STATUES

## OUR SMALLER ANGEL STATUES

are designed as add-ons for just about any monument. They look exceptional when paired with our Plura Memorials, Legacy Memorials, and take a traditional Serp Top to another level. We can create just about any statue given enough details - call a sales representative for more information.



## SUPER GRAY MARY OR JESUS STATUE

Size 0-5 x 0-7.5 x 1-10  
Weight: 95 lbs.

# SLATE TILES

## SLATE TILES

### Slate Round Tile

Size: 8" x 8" x .25"  
12" x 12" x .25"

**Slate Heart Tile**  
Size: 8" x 8" x .25"  
12" x 12" x .25"

**Slate Rectangle Tile**  
Size: 5" x 7" x .25"  
6" x 12" x .25"  
8" x 10" x .25"

**Slate Cutting Board**  
Size: 13.4" x 7.1" x .25"

**Slate Flower Shape**  
Size: 10" x 10" x .25"

**Slate Square Plaque**  
Size: 8" x 8" x .25"  
12" x 12" x .25"

### Slate House

Size: 8" x 8" x .25" (2 drill holes)  
12" x 12" x .25" (2 drill holes)



SLATE RECTANGLE



SLATE FLOWER



SLATE HEART



SLATE CUTTING BOARD



SLATE ROUND



SLATE HOUSE



SLATE SQUARE

## SLATE TILES

are designed to make materials come to life. With these slate pieces you are able to create an array of projects including ones that offer high contrast and detail in every creation.



# MOST LOVED MEMORIALS



## Granite Vases

Jet Black vases are a unique add-on to any memorial!

It's traditional shape and high polish look make this our most popular vase!



## Statue Monuments

Because each Statue Monument is hand carved, you always get a completely unique and very special monument.



## Granite Benches

One bench, multiple purposes! Use as a traditional memorial or a donation bench.

All surfaces of the CHR02 are polished, providing you with many places to add laser artwork or sandblast artwork.



## Premium Slants

Combine the special heart shape with a unique Endless Affection laser etching for a priceless memorial.

## Cremation Memorials

This two leveled columbarium allows for a physical closeness beyond life. It also features a perfect space for a special vase, solar light or statue.



## Legacy Memorials

Carnation Pink is a traditional color bringing comfort and peace.

Sandblast on the curved edge to create a personalized monument.



# MARKERS

Best Price in the business! Whether slants, bevels, or flat markers, quite often we have more designs and lower prices than our competitors. But, more than that, all of our granite markers are both high quality and backed by the best warranty in the business!

# PREMIUM SLANTS



HS02 SLANT

**FULL-SIZE MONUMENTS** are not the only way to give your customers a luxury-class memorials. With so many size restrictions in cemeteries, sometimes slant markers are the only option. Offer your customers more than a traditional serp top slant by stocking your show room with our line of premium slants adorned with beautiful finish work!



CC01 SLANT



SH20 SLANT



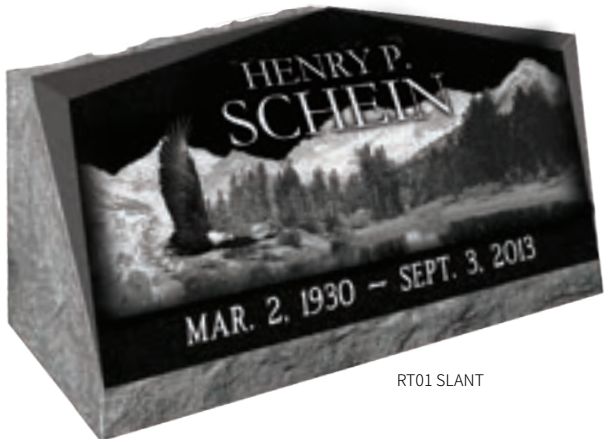
SH01 SLANT



TB06 SLANT



SR01 SLANT



RT01 SLANT

| Models shown above            | Weight   |
|-------------------------------|----------|
| <b>Size:</b> 2-0 x 0-10 x 1-6 | 498 lbs. |
| <b>Size:</b> 2-6 x 0-10 x 1-6 | 623 lbs. |
| <b>Size:</b> 3-0 x 0-10 x 1-6 | 872 lbs. |





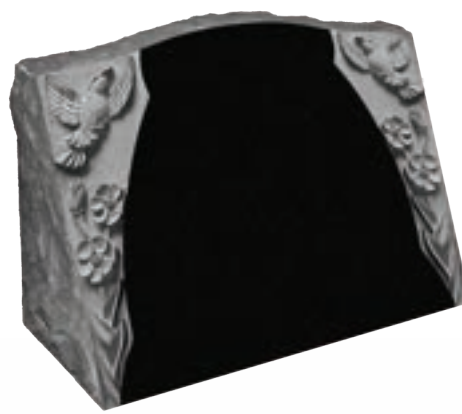
**STS004 in SD Pink**

**Slant:** 3-0 x 0-10 x 1-6 **Base:** 4-6 x 1-2 x 0-8 with carving  
**Column:** 0-8 x 0-8 x 2-2 *\*Available in other colors.*

**OUR STATUE SLANTS ARE THE BEST IN THE BUSINESS!**  
 Hand crafted by our expert stone carvers, we take the same care and attention to detail that we do with each and every order just as we do our full sized Statue Monuments.



**STS001 in Jet Black**  
 2-6 x 0-10 x 1-8



**STS003 in Jet Black**  
 2-0 x 0-10 x 1-6



**STM034 in Jet Black**  
 2-6 x 1-10 x 2-0

## PERSONALIZE A SLANT



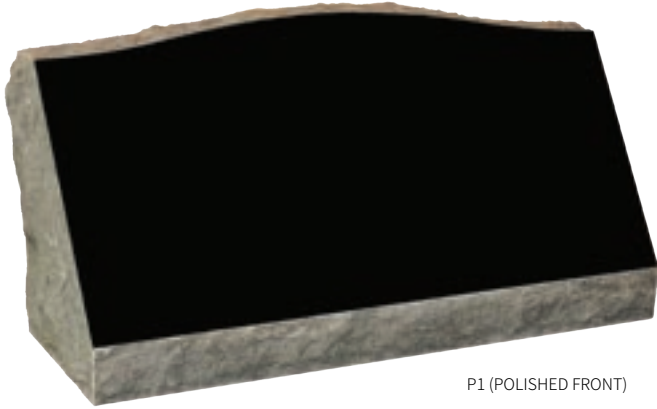
### Personalized Laser Engravings

Our laser etchings allow you to capture the legacy of a life once lived. Whether it be a single photograph, a series of photos, or a stock scene from our selection of over 50 scenes, our designers will create a unique and ultra-personalized tribute specifically designed for and about your loved one.

# SLANT MARKERS

A polished edge creates a more finished look.  
Polish just one or all sides of a monument, the choice is yours!

## POLISH OPTIONS



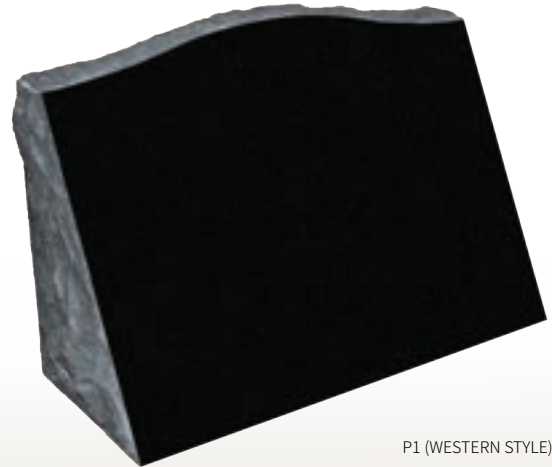
P1 (POLISHED FRONT)



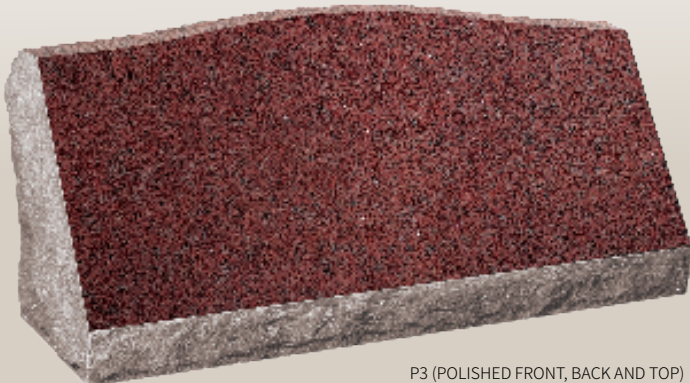
P5 (ALL SIDES POLISHED)



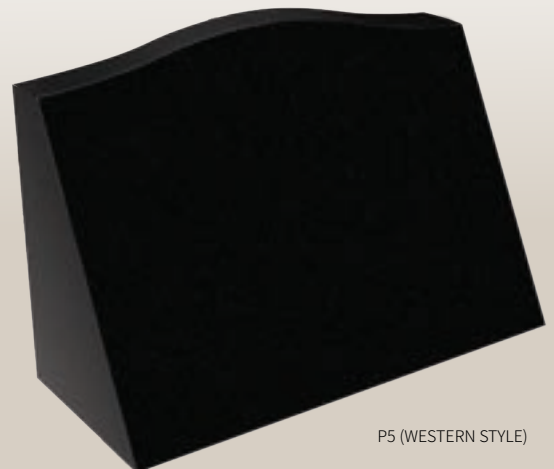
P2 (POLISHED FRONT AND TOP)



P1 (WESTERN STYLE)



P3 (POLISHED FRONT, BACK AND TOP)



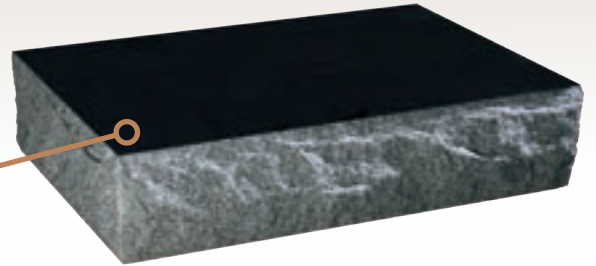
P5 (WESTERN STYLE)

# FLAT MARKERS

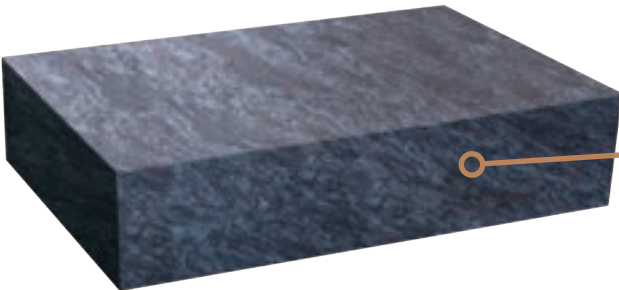
Markers available from 16" - 62" in length in all colors. Choose from rocky sides, sawed sides, or all polished.



Polished flat top with smooth sawed sides.



Polished flat top, with a beautiful natural rocky finish on sides.



All polished marker

Many unique colors to choose from!  
See page 3.

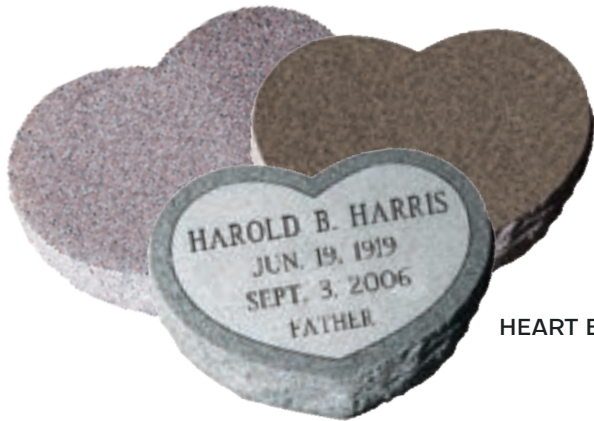
HONOR THE *PEOPLE YOU LOVE*  
IN THE *PLACES THEY LOVED*



A cemetery isn't the only place where you can reflect on the life of a loved one. Markers are a great small scale tribute and can be personalized beyond your imagination! Place them in a commemorative garden or any other meaningful setting to honor someone who has touched your life in a special way.



# PREMIUM BEVEL MARKERS

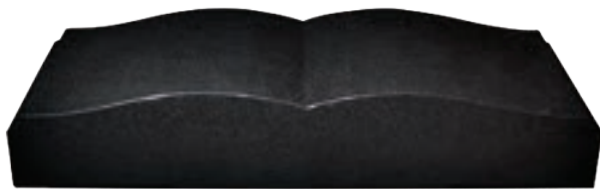


HEART BEVEL

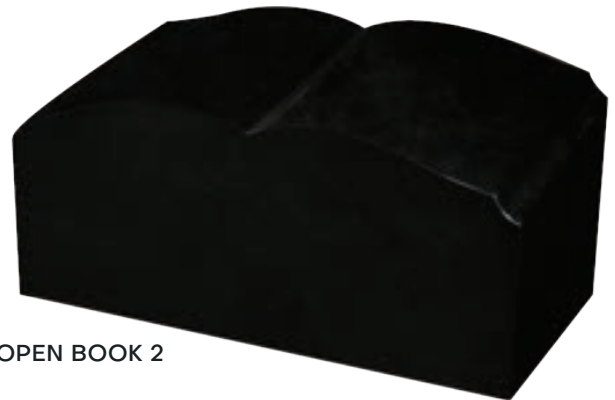


Vases on page 59.

SPE02



OPEN BOOK



OPEN BOOK 2

## STANDARD BEVEL MARKERS



We have over 14 unique colors to choose from and sizes ranging from 16" up to 48" in both 6" and 8" thickness. Special orders are always welcome!

For a more traditional look, finish your bevel markers with stunning sandblast artwork.

For a more modern and personalized look, have lasered artwork added to Jet Black bevels of all sizes!

### OPTING FOR CREMATION?

Our Deluxe Cremation Bevel is the perfect solution! Fully equipped for cremation, this bevel has a chamber built into the top for placing urns or other special keepsakes into.

Available in 2 foot and 3 foot sizes with a fully customizable Jet Black plaque.



# DOUBLE CREMATION BEVEL

## G633 URN

Size 2-3 X 1-6 X 0-10, With (2) 220 cubic inches cremation chamber, Cremation pillar, Rocked sides, (2) Jet black round tiles 8" X 8" 3/8" POL 1, sawn side.



## G633 URN

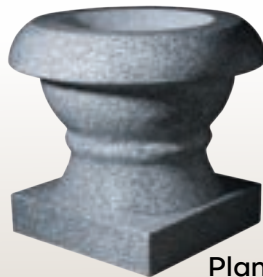
Size 2-3 X 1-6 X 0-10, With (2) 220 cubic inches cremation chamber, Cremation pillar, Rocked sides, (2) Jet black square tiles 8" X 8" 3/8" POL 1, sawn side.

## ADD A COMPANION PIECE!

Choose from our fine selection of companion pieces!



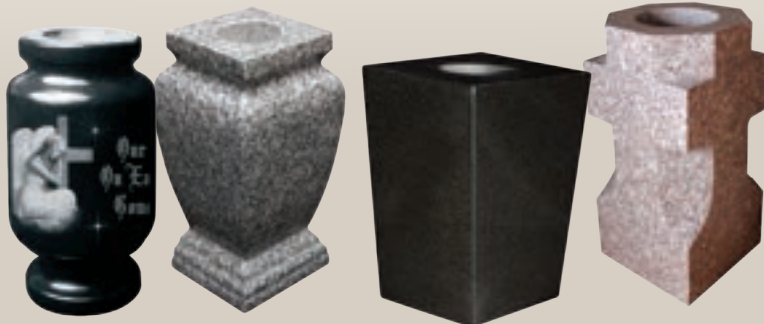
Baths p. 59



Planters p. 60



Solar Lights p. 61



Vases p. 59



Statues p. 62

# WOODEN URNS

Keep precious memories alive forever with our line of high quality, hand-crafted laserable wooden urns.

## WOODEN URNS

8.85" x 6.1" x 6.22", 200 in<sup>3</sup>

**BROWN**  
**CHERRY**

\*Laser engravings not included.



Add a custom engraving!

Laser engrave high-resolution photos, design elements, quotes, lyrics and even hand prints to create a priceless urn that will be admired for years to come.



## BROWN WOOD URN

5.5" x 3.3" x 2.9", 25 in<sup>3</sup>  
6.1" x 4.1" x 3.3", 45 in<sup>3</sup>  
7.5" x 4.9" x 4.1", 85 in<sup>3</sup>  
8.3" x 5.3" x 4.7", 125 in<sup>3</sup>



## CHERRY WOOD URN

5.5" x 3.3" x 2.9", 25 in<sup>3</sup>  
6.1" x 4.1" x 3.3", 45 in<sup>3</sup>







## LASERABLE SMALL ITEMS

High Quality, small granite pieces make great gifts and pet markers. They can even be used as baby or child memorial! Laser-etch them for a completely unique and personalized piece. All items in this section can be lasered when you order in our premier color, Jet Black.

# PET MEMORIALS



**MEMORIALIZING PETS IS A FAIRLY NEW TREND. PREVIOUSLY AN UNCHARTED INDUSTRY PET PRODUCTS BROUGHT IN \$10.3 BILLION DOLLARS IN 2019!**

Whether you offer pet memorials at your own shop or are interested in starting an off-shoot business, we have a variety of pet memorial products that will suit your needs. Offer your customers what they really want: beautiful personalized finish work honoring the life of their beloved friend.

## PET MEMORIAL TILES



Tiles are a perfect tribute to a lost pet and can be displayed just about anywhere! See our full selection of shapes and sizes on page 75.

## UPRIGHT MINI MEMORIALS

Our line of mini memorials are the same quality and style as our full sized Legacy Memorials made smaller for use as a pet memorial. They also make great display pieces if you don't have space to show full sized monuments!



CC01

### MINI MEMORIALS

Die: 1-0 x 0-2 x 0-8 p5  
Base: 1-4 x 0-4 x 2-0 pmg brp  
*\*Available in other colors*



RT01



HS02



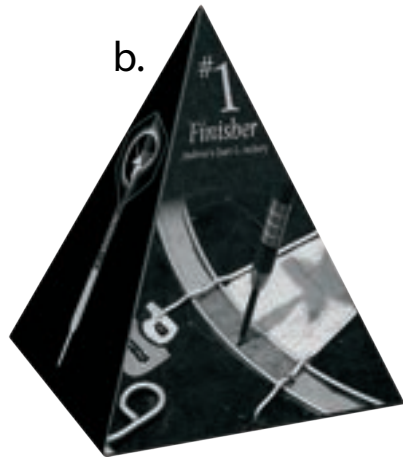
OV01

# THE BUSINESS COLLECTION

Any of these laser-able pieces are perfect for personalized gifts!



a.



b.



c.



d.

a. **Obelisk:** 0-2<sup>1</sup>/<sub>2</sub> x 2<sup>1</sup>/<sub>2</sub> x 0-8<sup>1</sup>/<sub>2</sub> 5 lbs.

b. **Pyramid:** 0-3 x 0-3 x 0-3<sup>1</sup>/<sub>8</sub> 3 lbs.  
0-4 x 0-4 x 0-5 9 lbs.

c. **Nameplate:** 1-0 x 0-2 x 0-2 5 lbs.

d. **Business card holder:** 0-3.5 x 0-2 x 0-2 3 lbs.

## JET BLACK INSERTS

Place a beautiful laser etched plaque into any granite color! They also look beautiful customized as a stand-alone piece.







**PETPAW**

0-8 x 0-7.5 x 0-2 brp  
 0-10 x 0-9.5 x 0-2 brp  
 1-0 x 0-11 x 0-2 brp



**PETBONE**

1-0 x 0-6 x 0-2 brp  
 1-2 x 0-7 x 0-2 brp  
 1-4 x 0-8 x 0-2 brp



**SGSS01**

1-6 x 1-0 x 0-1.5 P1 brp



**PETHEART**

**Bevel**

0-8 x 0-8 x 0-3/0-2 brp  
 0-10 x 0-10 x 0-3/0-2 brp  
 1-0 x 1-0 x 0-3/0-2 brp



**RUSTIC2**

**Flat**

0-8 x 0-8 x 0-2 brp  
 0-10 x 0-10 x 0-2 brp  
 1-0 x 1-0 x 0-2 brp



**PETCAT**

0-11 x 0-6 x 0-2 brp  
 1-3 x 0-8 x 0-2 brp  
 1-5 x 0-9 x 0-2 brp



**RUSTIC01**

1-0 x 0-6 x 0-8 brp  
 1-2 x 0-6 x 0-9 brp

**CREMATION PET MARKER**



The perfect tribute to a lost friend. This marker has a cremation hole and black plaque making it fully customizable!

**Plaque:** 1-0 x 0-8 x 0-375  
**Marker:** 1-0 x 0-8 x 0-2

**PET MEMORIAL TILES**



Tiles are a beautiful tribute to a lost pet and can be displayed anywhere!

**PET MARKER**

With the same quality and beauty as our traditional sized markers, these smaller pet sized markers are perfect for a beloved companion.



| Models | Sizes            |
|--------|------------------|
| 2M01   | 0-4 x 0-7 x 0-2  |
| 2M02   | 0-6 x 0-10 x 0-2 |
| 2M03   | 0-8 x 1-0 x 0-2  |
| 2M04   | 0-9 x 1-2 x 0-2  |
| 2M05   | 0-10 x 1-4 x 0-2 |

| Models | Sizes              |
|--------|--------------------|
| 1M01   | 0-4 x 0-7 x 0-1.5  |
| 1M02   | 0-6 x 0-10 x 0-1.5 |
| 1M03   | 0-8 x 1-0 x 0-1.5  |
| 1M04   | 0-9 x 1-2 x 0-1.5  |
| 1M05   | 0-10 x 1-4 x 0-1.5 |



# SUPERNOVA INTERNATIONAL

Presort  
Standard  
US Postage  
**Paid**  
Lansing MI  
Permit # 1096



MI: (800) 449-2481  
GA: (866) 786-6355



[supernovaintl.com](http://supernovaintl.com)



SuperNova International  
1709 Thompson St. #311  
Lansing MI 48906

Prices are subject to change without notice. Prices valid through 2022. Photos are a representation of colors, actual granite colors may vary slightly.  
Availability of colors subject to change at any time. Prices shown do not include finish work unless otherwise specified.