

Severe *Ehrlichia chaffeensis* Infection in a Lung Transplant Recipient: A Review of Ehrlichiosis in the Immunocompromised Patient

Nasia Safdar,* Robert B. Love,* and Dennis G. Maki*

We describe a case of human ehrlichiosis in a lung transplant recipient and review published reports on ehrlichiosis in immunocompromised patients. Despite early therapy with doxycycline, our patient had unusually severe illness with features of thrombotic thrombocytopenic purpura. Of 23 reported cases of ehrlichiosis in immunocompromised patients, organ failure occurred in all patients and 6 (25%) died.

Since the discovery in 1987 of *Ehrlichia* as a cause of tick-borne disease in humans (1), ehrlichiosis has been recognized as an increasingly important cause of acute febrile illness (2,3). The two main pathogenic species are *Ehrlichia chaffeensis*, which causes human monocytic ehrlichiosis (HME), and the as-yet-unnamed agent of human granulocytic ehrlichiosis (HGE) (4). A third species, *E. ewingii*, which has been recently described, causes clinical disease indistinguishable from infection caused by *E. chaffeensis* or the agent of human granulocytic ehrlichiosis (5).

Delineation of the epidemiology of human ehrlichiosis has greatly enhanced our understanding of this emerging infection. However, information on the manifestations of ehrlichiosis in immunocompromised patients is limited. We report a case of severe monocytic ehrlichiosis in a lung transplant recipient who had pancytopenia, acute renal failure, and encephalopathy. Despite early diagnosis and treatment with doxycycline, his illness progressed and took on features of thrombotic thrombocytopenic purpura (TTP). A review of reported cases of *Ehrlichia* infection in immunocompromised patients shows that the infection is far more severe in this population and is often fatal.

Case Report

A 38-year-old man with cystic fibrosis had undergone bilateral lung transplantation in 1998 and had been well. In September 2000, he visited a physician with a 3-day history of

fever as high as 38.3°C, myalgias, and headache. A resident of Columbia, Missouri, the patient had spent much time outdoors but did not recall tick infestation or recent tick bite. His medications included cyclosporine, mycophenolate, prednisone, diltiazem, trimethoprim-sulfamethoxazole, and valacyclovir.

On physical examination, the patient appeared acutely ill with temperature 38.3° C, blood pressure 140/64, heart rate 110 per minute, and respiratory rate 20 per minute. He was lethargic but could follow commands, and his neurologic exam was unremarkable. Fine bibasilar crackles were present bilaterally, but heart sounds were normal. Examination of the abdomen was negative. Synovitis was not evident, and no cutaneous lesions were found.

The leukocyte count was 3.7×10^9 per L with 68% neutrophils, hemoglobin was 64 g/L, and platelet count was 23,000/L. Serum creatinine was 4.6 mg/dL, aspartate aminotransferase 420 U/L, alanine aminotransferase 96 U/L, and bilirubin 3.2 mg/dL. International normalized prothrombin time ratio (INR) was 1.4. Examination of a peripheral blood smear showed schistocytes and other microangiopathic changes.

Multiple blood cultures were negative. Cytomegalovirus DNA was not detected in peripheral blood. Noncontrast computed tomography of the brain was normal. Chest radiograph showed bilateral infiltrates.

The patient was treated initially with intravenous piperacillin-tazobactam and vancomycin. Cyclosporine and trimethoprim-sulfamethoxazole were discontinued. The next day, his mental status continued to deteriorate. Lumbar puncture was deferred because of thrombocytopenia. Antibiotic therapy was changed to intravenous meropenem. Four days after admission, the bone marrow was examined because of worsening pancytopenia; intracytoplasmic morulae were seen in monocytoic cells, characteristic of monocytic ehrlichiosis (Figure). Leukocytes in a peripheral blood smear also contained morulae. Intravenous doxycycline was begun for treatment of presumed *Ehrlichia* infection. Whole-blood polymerase chain reaction (PCR) (Viomed, Minneapolis, MN) in the first week of illness was subsequently reported positive for *E. chaffeensis*

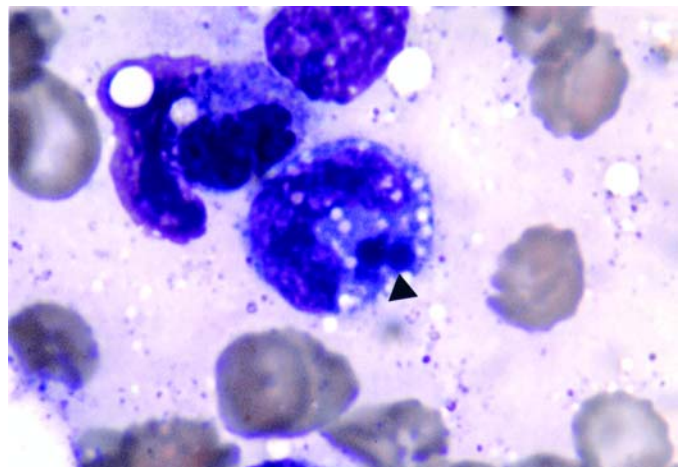


Figure. Bone marrow examination (Wright's stain x1000). Intraleukocytic morulae of *Ehrlichia* can be seen (arrow) within monocytoic cells.

*University of Wisconsin Medical School, Madison, Wisconsin, USA

Table. Reports of immunocompromised patients with *Ehrlichia* infection

| Immunocompromised state | Age | Form of ehrlichiosis | Clinical features | Outcome | Reference |
|---|-----|--------------------------|--|----------|--------------|
| Rheumatoid arthritis, on methotrexate | 49 | <i>Ehrlichia ewingii</i> | Fever, headache | Survived | 5 |
| Emphysema, on prednisone | 65 | <i>E. ewingii</i> | Fever, headache | Survived | 5 |
| Renal transplant | 11 | <i>E. ewingii</i> | Lyphadenopathy, fever | Survived | 5 |
| Liver transplant | 47 | HME ^a | Multiorgan failure | Survived | 9 |
| Leukemia | 6 | HME | Hepatitis, pancytopenia, rash, renal failure | Survived | 10 |
| Asplenia | 71 | HGE | Fever, neurologic dysfunction | Survived | 11 |
| Asplenia | 30 | HGE | Rash, fever | Survived | 11 |
| HIV infection (CD4 45/mm ³) | 33 | HME | Cardiomyopathy, heart failure | Survived | 12 |
| Renal transplant | 35 | HME | Rash, pancytopenia, renal failure | Survived | 13 |
| HIV infection (CD4 NS) | 38 | HME | Multiorgan failure | Died | 14 |
| Sickle beta-thalassemia | NS | HME | Respiratory failure | Survived | 15 |
| Renal transplant | NS | HME | NS | Survived | 15 |
| HIV infection (CD4 164/mm ³) | 52 | HME | Hepatitis, thrombocytopenia | Died | 16 |
| Renal transplant | 67 | HGE | Pancytopenia, renal failure, hepatitis | Survived | 17 |
| HIV infection CD4 (18/mm ³) | 36 | HME | Hepatitis, renal failure | Died | 18 |
| Liver transplant | 51 | HME | Pancytopenia, shock | Survived | 19 |
| Asplenia, chronic lymphocytic leukemia, on steroids | 80 | HGE | Multiorgan failure | Died | 7 |
| HIV infection (CD4 199/mm ³) | 37 | HME | Fever, pancytopenia, toxic-shock-like illness | Survived | 20 |
| Splenectomy | 46 | HME | Pancreatitis, shock, encephalitis | Survived | 20 |
| HIV infection (CD4 64/mm ³) | 41 | HME | Pancytopenia, pulmonary hemorrhage | Died | 21 |
| Asplenia | 67 | <i>E. canis</i> | Renal failure, respiratory failure, encephalitis | Died | 8 |
| Crohn disease requiring prednisone | 57 | <i>E. canis</i> | Pancytopenia, hepatitis | Survived | 22 |
| Bilateral lung transplant | 38 | HME | Pancytopenia, renal failure, TTP-like illness | Survived | Current case |

^aHME = human monocytic ehrlichiosis; HGE = human granulocytic ehrlichiosis; NS = not specified

DNA. Serology by immunofluorescence antibody testing for both *E. equi* and *E. chaffeensis* performed 2 weeks after onset of illness was negative, with titers <1:40.

Despite treatment with doxycycline, the patient's confusion, thrombocytopenia, and microangiopathic anemia did not improve, and on the fifth hospital day he was transferred to the University of Wisconsin Hospital and Clinics. Physical examination showed blood pressure 144/94 mmHg, heart rate 77/minute, temperature 36.5°C, and respiratory rate 24/minute. Multiple ecchymoses were present on the torso and extremities. Neurologic examination was nonfocal. There were coarse bibasilar crackles in the lungs bilaterally. Examination of the heart and abdomen was unremarkable.

Leukocytes were $2.9 \times 10^9/L$, hemoglobin 86 g/L, and platelets 30,000/L. Serum creatinine was 6.2 mg/dL (548 mol/L), total bilirubin 2.0 mg/dL, aspartate aminotransferase 105 U/L, and alanine aminotransferase 55 U/L. INR was 1.1, and the activated partial thromboplastin time was 26 seconds. A

peripheral blood smear showed numerous fragmented red blood cells. Chest radiograph showed persistence of bilateral infiltrates.

The patient's fever resolved 2 days after doxycycline was started; however, oliguric renal failure necessitated hemodialysis. Hematologic studies showed progressive microangiopathic anemia and thrombocytopenia with a normal INR, suggestive of TTP, presumably secondary to *Ehrlichia* infection. Daily plasmaphereses were begun and continued for 8 weeks. Gradually the hematologic abnormalities and renal function improved, and the patient's mental status returned to normal. Doxycycline was given for 2 weeks.

The patient ultimately made a full recovery with no apparent sequelae. Cyclosporine was not resumed, and he was maintained on sirolimus and prednisone to prevent transplant rejection. No rejection occurred, despite a reduction in immunosuppressive therapy during the treatment of *Ehrlichia* infection.

Review of Published Reports

Ehrlichiosis is a zoonotic illness caused by *Ehrlichia* species, which are pleomorphic, intracellular, rickettsia-like organisms (2-4). The clinical spectrum of ehrlichiosis varies from a mild, influenzalike illness to a fulminant sepsis syndrome, but in most patients is self-limiting and not fatal. Death rates of documented ehrlichial infection in large, unselected series have been 1% to 8% (3,6-8). This low rate contrasts sharply with the high death rate of ehrlichiosis in immunocompromised patients (Table).

Cellular immunity represents the most important host defense against rickettsial infection (23). Acute-phase sera of patients with HGE contain elevated levels of interferon gamma, which is associated with the clearance of *Ehrlichia* from peripheral blood (24). In a mouse model of ehrlichiosis, immunocompromised mice have persistent infection, and most eventually die (25). Impairment of cellular immunity, whether from immunosuppressive therapies or underlying disease, retards recovery, leading to more severe disease and higher death rates.

The population of immunocompromised patients is large and growing; many have asplenia or solid organ or bone marrow transplants (26). An analysis of the published reports of ehrlichial infection shows that the disease in immunocompromised patients is far more severe and prolonged and more likely to be fatal (Table) (5,7-22). Virtually all these patients had signs of organ dysfunction, including pancytopenia (40%), renal failure (24%), respiratory distress (14%), shock (28%), and neurologic dysfunction (18%). Six (25%) of 23 patients died; 4 of the 6 deaths were in HIV-infected patients. Two patients died within 24 hours after coming to medical attention, despite initiation of appropriate antimicrobial therapy; in the third, the diagnosis was not considered until late in the hospital course; and in the fourth, the diagnosis was made postmortem. Two deaths occurred in asplenic patients; in both, *Ehrlichia* infection was not suspected until 1 week after onset of illness.

In a recent series of ehrlichial infection in 21 HIV-infected patients, 6 of which are included in our review, Paddock et al. reported a high frequency (71%) of moderate to severe disease in HIV-infected patients, particularly with *E. chaffeensis* (27). Low CD4 counts were associated with a poor outcome.

Discussion

To our knowledge, this is the first reported case of acute ehrlichiosis in a lung transplant recipient. Our patient had laboratory features typical of *Ehrlichia* infection (thrombocytopenia, leukopenia, and transaminase elevation). However, he also had microangiopathic anemia, renal failure, and neurologic dysfunction characteristic of TTP. Ehrlichiosis with features of TTP has been described in two reports (28,29), one case each of HME and HGE. Both cases were in immunocompetent persons: one was treated with doxycycline and plasmapheresis; in the other, the diagnosis was made postmortem.

Our patient's multiorgan failure and hematologic aberrations persisted, despite doxycycline therapy, until he underwent plasmapheresis. He was receiving cyclosporine, which is a well-known cause of a rare hemolytic uremic syndrome-TTP-like condition that does not respond to plasmapheresis and nearly always proves fatal (30). That our patient's TTP-like illness coincided with *Ehrlichia* infection and responded to doxycycline and plasmapheresis makes it most likely that it was a consequence of acute ehrlichiosis, not cyclosporine.

Neurologic manifestations, ranging from confusion to frank meningitis, have been reported in up to 20% of patients with ehrlichiosis (31). Our patient had obtundation and delirium that persisted after doxycycline therapy was initiated and his fever had resolved. The presence of headache and confusion in conjunction with pancytopenia and transaminase elevation should raise suspicion of *Ehrlichia* infection, especially if the patient has had potential tick exposures.

The diagnosis of ehrlichiosis is often delayed because of its nonspecific clinical and laboratory manifestations. In the immunocompromised person, the search for opportunistic infections may further preclude consideration of *Ehrlichia* infection. The empiric antimicrobial regimens used in immunocompromised patients for suspected cryptogenic bacterial and fungal sepsis rarely include a drug or drugs effective against *Ehrlichia*. PCR to detect *Ehrlichia* DNA is invaluable for the diagnosis and has >90% sensitivity and even better specificity (32). This technique is particularly useful in the immunocompromised host in whom rapid diagnosis is of utmost importance. Peripheral blood and bone marrow examinations show intracellular morulae in HME in only 1% to 5% of cases and cannot be relied on diagnostically, unless positive. Serologic testing does not allow rapid diagnosis and may be negative in the immunocompromised patient (21), as was the case with our patient.

The diagnosis of ehrlichiosis should be considered in any patient with fever, transaminase elevations, and new-onset thrombocytopenia or leukopenia who has had potential tick exposures in an endemic area. In the immunocompromised host, clinical manifestations are more severe and can include neurologic deterioration, multiorgan failure, and even a TTP-like illness. Response to appropriate therapy with doxycycline may be delayed. A high index of suspicion, the use of PCR for confirmatory diagnosis and early empiric therapy can be life-saving.

Dr. Safdar is a clinical and research fellow at the University of Wisconsin, Madison.

References

1. Maeda K, Markowitz N, Hawley RC, Ristic M, Cox D, McDade JE. Human infection with *Ehrlichia canis*, a leukocytic rickettsia. *N Engl J Med* 1987;316:853-6.
2. Dumler JS, Bakken JS. Ehrlichial diseases of humans: emerging tick-borne infections. *Clin Infect Dis* 1995;20:1102-10.

3. McQuiston JH, Paddock CD, Holman RC, Childs JE. The human ehrlichioses in the United States. *Emerg Infect Dis* 1999;5:635-42.
4. Rikihisa Y. The tribe *Ehrlichiae* and ehrlichial diseases. *Clin Microbiol Rev* 1991;4:286-308.
5. Buller RS, Arens M, Hmiel SP, Paddock CD, Sumner JW, Rikihisa Y, et al. *Ehrlichia ewingii*, a newly recognized agent of human ehrlichiosis. *N Engl J Med* 1999;341:148-55.
6. Fishbein DB, Dawson JE, Robinson LE. Human ehrlichiosis in the United States, 1985 to 1990. *Ann Intern Med* 1994;120:736-43.
7. Bakken JS, Dumler JS, Chen S-M, Eckman MR, Van Etta LL, Walker DH. Human granulocytic ehrlichiosis in upper Midwest United States. *JAMA* 1994;272:212-8.
8. Eng TR, Harkness JR, Fishbein DB, Dawson JE, Greene CN, Redus MA, et al. Epidemiologic, clinical, and laboratory findings of human ehrlichiosis in the United States, 1988. *JAMA* 1990;264:2251-8.
9. Tan HP, Dumler S, Maley WR, Klein AS, Burdick JF, Fred Poordad F, et al. Human monocytic ehrlichiosis: an emerging pathogen in transplantation. *Transplantation* 2001;71:1678-80.
10. Arav-Boger R, Knepp JH, Walls JJ, Dumler JS. Human monocytic ehrlichiosis in a child with leukemia. *Pediatr Infect Dis J* 2000;19:173-5.
11. Rabinstein A, Tikhomirov V, Kaluta A, Gelfmann N, Iannini P, Edwards L. Recurrent and prolonged fever in asplenic patients with human granulocytic ehrlichiosis. *QJM* 2000;93:198-201.
12. Whitt SP, Everett ED, Roland W, Dolan S. *Ehrlichia chaffeensis*—associated cardiomyopathy in patients with AIDS. *Clin Infect Dis* 1999;28:140.
13. Sadikot R, Shaver MJ, Reeves WB. *Ehrlichia chaffeensis* in a renal transplant recipient. *Am J Nephrol* 1999;19:674-6.
14. Martin GS, Christman BW, Standaert SM. Rapidly fatal infection with *Ehrlichia chaffeensis*. *N Engl J Med* 1999;341:763-4.
15. Schutze GE, Jacobs RF. Human monocytic ehrlichiosis in children. *Pediatrics* 1997;100:E10.
16. Paddock CD, Sumner JW, Shore MG, Bartley DC, Elie RC, McQuade JG, et al. Isolation and characterization of *Ehrlichia chaffeensis* strains from patients with fatal ehrlichiosis. *J Clin Microbiol* 1997;35:2496-502.
17. Adachi JA, Grimm EM, Johnson P, Uthman M, Kaplan B, Rakita RM. Human granulocytic ehrlichiosis in a renal transplant patient. *Transplantation* 1997;64:1139-42.
18. Barenfanger J, Patel PG, Dumler SJ, Walker DH. Identifying human ehrlichiosis. *Lab Med* 1996;27:372-4.
19. Antony SJ, Dummer S, Hunter E. Human ehrlichiosis in a liver transplant recipient. *Transplantation* 1995;60:879-81.
20. Fichtenbaum CJ, Peterson LR, Weil GJ. Ehrlichiosis presenting as a life-threatening illness with features of the toxic shock syndrome. *Am J Med* 1993;95:351-7.
21. Paddock CD, Suchard DP, Grumbach KL, Hadley WK, Kerschmann RL, Abbey NW, et al. Brief report: fatal seronegative ehrlichiosis in a patient with HIV infection. *N Engl J Med* 1993;329:1164-7.
22. Manian FA, Weidner J, Costello, Fishbein DB, Dawson JE. Human ehrlichiosis. *Missouri Med* 1989;86:691-5.
23. Fresno M, Kopf M, Rivas L. Cytokines and infectious diseases. *Immunol Today* 1997;18:56-8.
24. Dumler JS, Trigiani ER, Bakken JS, Aguero-Rosenfeld ME, Wormser GP. Serum cytokine responses during acute human granulocytic ehrlichiosis. *Clin Diagn Lab Immunol* 2000;7:6-8.
25. Winslow GM, Yage E, Shilo, Collins DN, Chu FK. Infection of the laboratory mouse with the intracellular pathogen *Ehrlichia chaffeensis*. *Infect Immun* 1998;66:3892-9.
26. UNOS transplant patient data base. Available at URL: <http://www.patients.unos.org>
27. Paddock CD, Folk SM, Shore GM, Machado LJ, Huyuke MM, Slater LN, et al. Infections with *Ehrlichia chaffeensis* and *Ehrlichia ewingii* in persons coinfecting with human immunodeficiency virus. *Clin Infect Dis* 2001;33:1586-94.
28. Modi KS, Dahl DC, Berkseth RO, Schut R, Greeno E. Human granulocytic ehrlichiosis presenting with acute renal failure and mimicking thrombotic thrombocytopenic purpura. *Am J Nephrol* 1999;19:677-81.
29. Marty AM, Dumler JS, Imes G, Brusman HP, Smrkovski LL, Frisman DM. Ehrlichiosis mimicking thrombotic thrombocytopenic purpura. A case report and pathological correlation. *Human Pathol* 1995;26:920-5.
30. Remuzzi G, Bertani T. Renal vascular and thrombotic effects of cyclosporine. *Am J Kidney Dis* 1989;13:261-72.
31. Ratnasamy N, Everett ED, Roland WE, McDonald G, Caldwell CW. Central nervous system manifestations of human ehrlichiosis. *Clin Infect Dis* 1996;23:314-9.
32. Anderson BE, Sumner JW, Dawson JE, Tzianabos T, Greene CR, Olson JG, et al. Detection of the etiologic agent of human ehrlichiosis by polymerase chain reaction. *J Clin Microbiol* 1992;30:775-80.

Address for correspondence: Nasia Safdar, Section of Infectious Diseases, University of Wisconsin, Madison, H4/574 CSC, 600 Highland Avenue, Madison, WI 53792, USA; fax: 608-263-4464; e-mail: n.safdar@hosp.wisc.edu