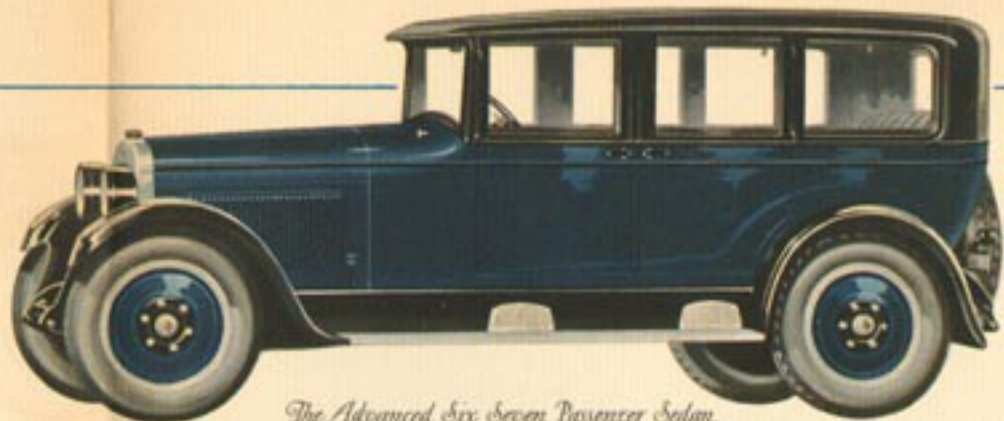


NASH mastery of fine motor car construction and refreshing originality in body design reach impressive new heights in these three magnificent models. As you study them in detail you sense at once a far finer quality and a greater value than have ever before been obtainable in this price-field.

The long low graceful contour of line and the expert craftsmanship that distinguish Nash-Seaman bodies find new achievement in these smartly-fashioned conceptions. The superb beauty of each car is charmingly enhanced by luxurious equipment and frosted silver fittings in rich Old Empire design. And the upholstery is of the choicest mo-hair velvet, deeply overstuffed, in handsome duotone shades.



*The Advanced Six Seven Passenger Sedan.*



*The Advanced Six Four Door Coupe.*



*The Advanced Six Victoria.*

ALL three models are mounted upon the big 127-inch Nash Advanced Six chassis, powered with the remarkable new Nash "enclosed car" motor. This motor in itself is a distinct engineering triumph, endowing, as it does, the heavier enclosed cars with all the smooth and flexible power that has heretofore been associated only with open car performance.

Then there are such further important mechanical features as the full force-feed lubrication; oil purifier, gasoline filterer, and air cleaner; and the Nash-design four-wheel brakes, full balloon tires and five disc wheels included as standard equipment. When you take all these points into consideration, coupled with the exceptionally modest prices of these models you will appreciate most fully their outstanding superiority.



